

B.M. 1.20 (LA MONTE D'OR) ELEV. 151.832
 DURFEE AVE. & KRUSE RD. 45' S. OF APPROX. &
 KRUSE RD. 23.4' E. OF DURFEE AVE. SET IN CON-
 18' BELOW STREET GRADE. DURFEE AVE. & KRUSE RD.
 MON. L.A. CO. SURVEY CONTROL SYSTEM TRIANGUL-
 ATION STA. "EL MONTE D-10", 1949, SET BY C.S. E.E. 529
 F.B. 1302-25

REVISION #2
 Revised MH locations on
 Greenglade Avenue.

REVISION #1
 Revised H.L.'s to show encasement
 except as shown in note 20.

Approved: *John L. Estlin*
 4-14-65
 Date

Approved: *John L. Estlin*
 3-9-65
 Date

PICO RIVERA BLDG. DIST. NO. 11.01

PROFILE ALIGNMENT AND GRADE OF P.C. 7031
 SANITARY SEWERS PAGE 1

TRACT NO. 29435

PRIVATE CONTRACT NO. 7031

W.S. 57

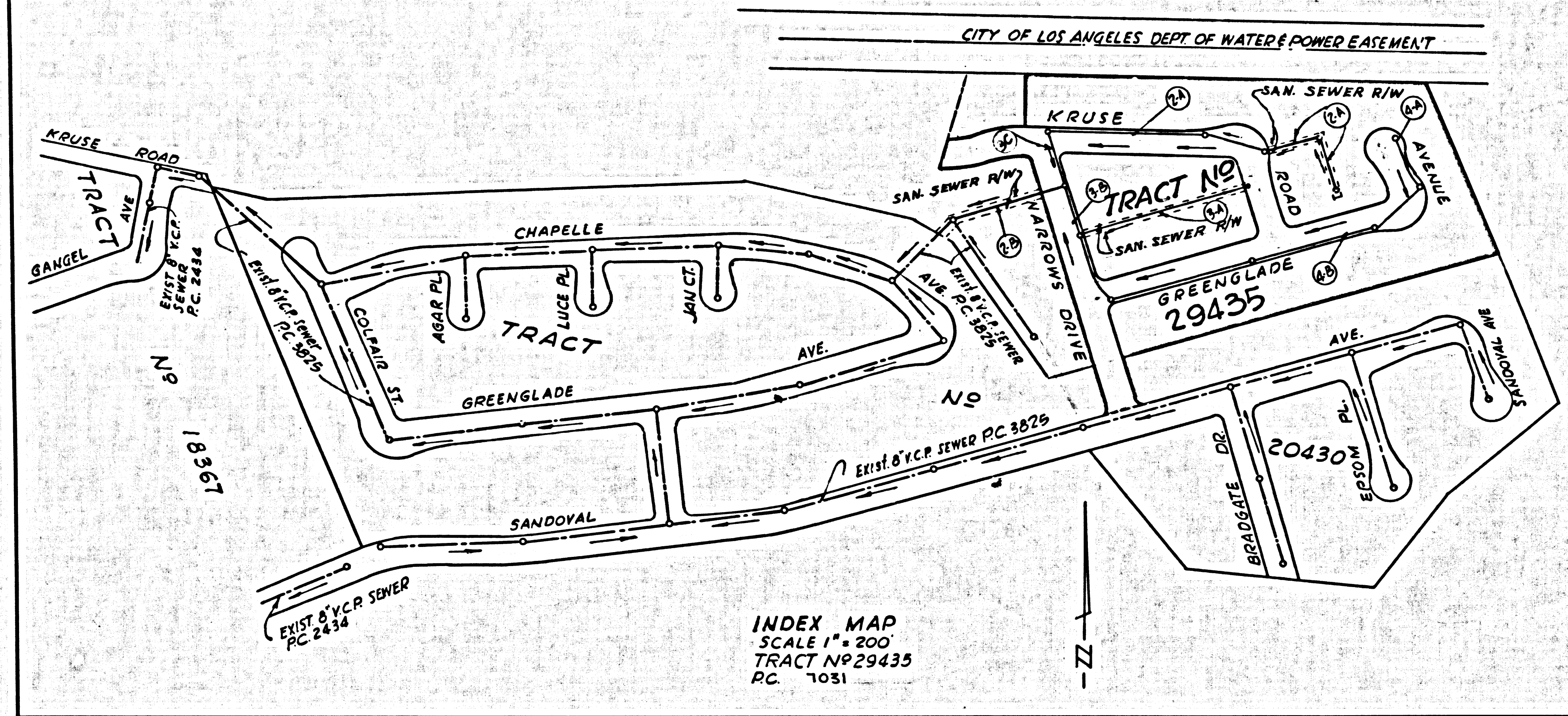
2 SHEETS, 4 PAGES

SCALE: VERT. 1" = 4' HORIZ. 1" = 20'

PREPARED IN THE OFFICES OF
 TECHNOLOGICAL ENGINEERING CORP.

By: *J.A. Patterson*
 REG. C.E. NO. 10410

FOR LEGEND SEE PLAN NO. S-1



- PROVIDE STAKES ON THE PROPERTY LINE OR PROPERTY LINES PRODUCED AT RIGHT ANGLES TO THE SEWER LINE AT THE CENTER LINE OF EACH MANHOLE.
- NO REPRESENTATIVE OF THE CITY ENGINEER WILL SURVEY OR LAY OUT ANY PORTION OF THE WORK.
- THE PRIVATE ENGINEER SHALL FURNISH THE CITY ENGINEER WITH GRADE SHEETS AND STATIONING FOR ALL HOUSE LATERALS AND Y BRANCHES AND SHALL PROVIDE STAKES FOR THEM AT THEIR PROPER LOCATIONS WITH STATIONING PLAINLY MARKED. ALL HOUSE LATERALS SHALL BE CONSTRUCTED IN A STRAIGHT ALIGNMENT AT RIGHT ANGLES FROM THE MAIN LINE SEWER EXCEPT AS SHOWN ON THE PLANS. HOUSE LATERALS FROM CHIMNEYS SHALL NOT HAVE AN ANGLE OF LESS THAN 45° WITH THE MAIN LINE SEWER. ANY CHANGE IN ALIGNMENT SHALL BE REQUESTED IN WRITING BY THE PRIVATE ENGINEER.
- THE PRIVATE ENGINEER SHALL FURNISH THE HOUSE LATERAL DEPTH AT THE PROPERTY LINE BELOW THE TOP OF CURB ELEVATION FOR EACH HOUSE LATERAL ON THE GRADE SHEET.
- NO REVISIONS SHALL BE MADE IN THESE PLANS WITHOUT THE APPROVAL OF THE CITY ENGINEER.
- THE CONTRACTOR SHALL NOTIFY THE CONSTRUCTION DIVISION BY TELEPHONE, MADISON 9-4747, EXT. 8158, AT LEAST TWENTY-FOUR HOURS BEFORE STARTING ANY WORK UNDER THIS CONTRACT.
- MANHOLES SHALL BE RECTANGULAR SHALLOW MANHOLES PER S-7, EXCEPT AS NOTED.
- USE SHALLOW MANHOLE FRAMES AND COVERS, S-7 EXCEPT AS NOTED.
- ALL C.I.P. SHALL BE CLASS 150 EXCEPT AS NOTED.
- USE EXTRA STRENGTH PIPE. ALL PIPE IS STANDARD DEPTH EXCEPT AS NOTED.
- USE MECHANICAL JOINTS FOR ALL V.C.P. JOINTS PER SPECS. SECS. 34, 40 & 49.
- HOUSE LATERALS SHALL BE 4" V.C.P. ENCASED PER S-23, EXCEPT AS NOTED.
- IF A POWER POLE IS WITHIN THREE FEET OF THE SEWER, THE SEWER SHALL BE ENCASED, PER S-23 TWO FEET ON EACH SIDE FROM THE POINT OF INTERFERENCE.
- IF DURING THE COURSE OF CONSTRUCTION IT IS DETERMINED THAT THERE IS LESS THAN FOUR FEET OF COVER OVER THE TOP OF A MAIN LINE OR HOUSE LATERAL V.C.P. SEWER WHICH IS NOT INDICATED ON THE PLANS, THE PIPE SHALL BE ENCASED PER S-23 UNLESS OTHERWISE APPROVED BY THE CITY ENGINEER.
- HOUSE LATERALS TO BE CONSTRUCTED WITH A 1/4" RISE PER FOOT UP TO THE PROPERTY LINE.
- RESURFACE ALL TRENCHES WITHIN PAVED AREAS TO MEET L.A. COUNTY ROAD DEPT. OR CALIFORNIA STATE HIGHWAY REQUIREMENTS IN ACCORDANCE WITH PERMITS.
- FOR ALLOWABLE MANAGE TEST USE FORMULA NO. 2, SPECS. SEC. 54.
- ALL STATE AND LOCAL TRENCH SAFETY ORDERS WILL BE RIGIDLY ENFORCED.
- THE CONTRACTOR SHALL MAINTAIN TRAFFIC CONTROL AS REQUIRED BY THE CITY OF PICO RIVERA.
- HOUSE LATERALS FOR LOTS 13, 14, 15, 20, 23, 25 & 30 SHALL BE 4" C.I.P. CLASS 150, USE MECHANICAL JOINTS PER SPECS. SEC. 30, 40 & 49.

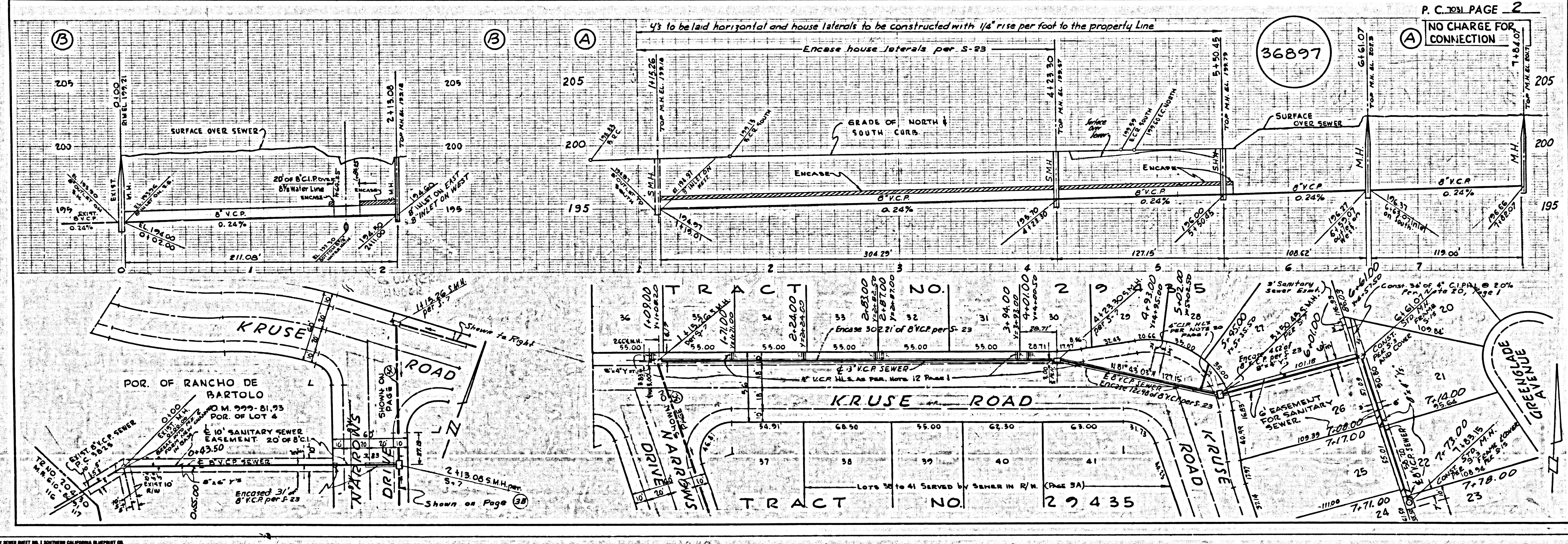
COLLECT CHARGES AS INDICATED
Indicated by red

APPROVED: *S.C. Kramer*
 DIRECTOR OF PUBLIC WORKS

NOTE: GRADES TO WHICH THIS IMPROVEMENT IS TO BE CONSTRUCTED ARE SHOWN ON PLANS AND PROFILES. GRADE POINTS FOR TOP OF CURB, CENTER LINE OF STREETS, OR CENTER LINE OF ALLEYS ARE SHOWN BY CIRCLES ON PROFILES. AT ALL POINTS BETWEEN DESIGNATED POINTS THE GRADE SHALL BE ESTABLISHED SO AS TO CONFORM TO A STRAIGHT LINE DRAWN BETWEEN SAID DESIGNATED POINTS. THIS DRAWING AND THE DATA HEREON ARE HEREBY MADE A PART OF THE SPECIFICATIONS. YOU SHALL BE CONSIDERED TO HAVE AGREED TO THESE SPECIFICATIONS DATED: JULY 25, 1962, ON FILE IN THE OFFICE OF THE CITY ENGINEER AND SHALL BE PROSECUTED ONLY IN THE PRESENCE OF THE CITY ENGINEER. BEFORE ANY WORK CAN BE STARTED, THE CONTRACTOR MUST OBTAIN A PERMIT TO EXCAVATE CITY STREETS FROM THE L.A. COUNTY ROAD DEPT. DISTRICT OFFICE NO. 1, 1100 S. GARDEN ST., PICO RIVERA, CALIF. 90661. THE CITY OF PICO RIVERA, CALIF. DOES NOT CONSTITUTE A REPRESENTATION AS TO THE ACCURACY OF THE LOCATION OF OR THE EXISTENCE OR NON-EXISTENCE OF ANY UNDERGROUND UTILITY PIPE, OR STRUCTURE WITHIN THE LIMITS OF THIS PROJECT. THIS NOTE APPLIES TO ALL PAGES.

CITY OF PICO RIVERA, CALIFORNIA
 JOHN A. LAMBIE, CITY ENGINEER
 J. D. PARKHURST, CHIEF ENGINEER
 APPROVED BY: *John A. Lambie*
 ASSISTANT SANITATION ENGINEER
 APPROVED BY: *J.D. Parkhurst*
 OFFICE ENGINEER
 SUBMITTED BY: *John A. Lambie*
 LOS CERRITOS REGIONAL ENGINEER R.E. 3871
 CHECKED BY: *John A. Lambie*
 REG. C.E. NO. 15878

36896



36897

36896

