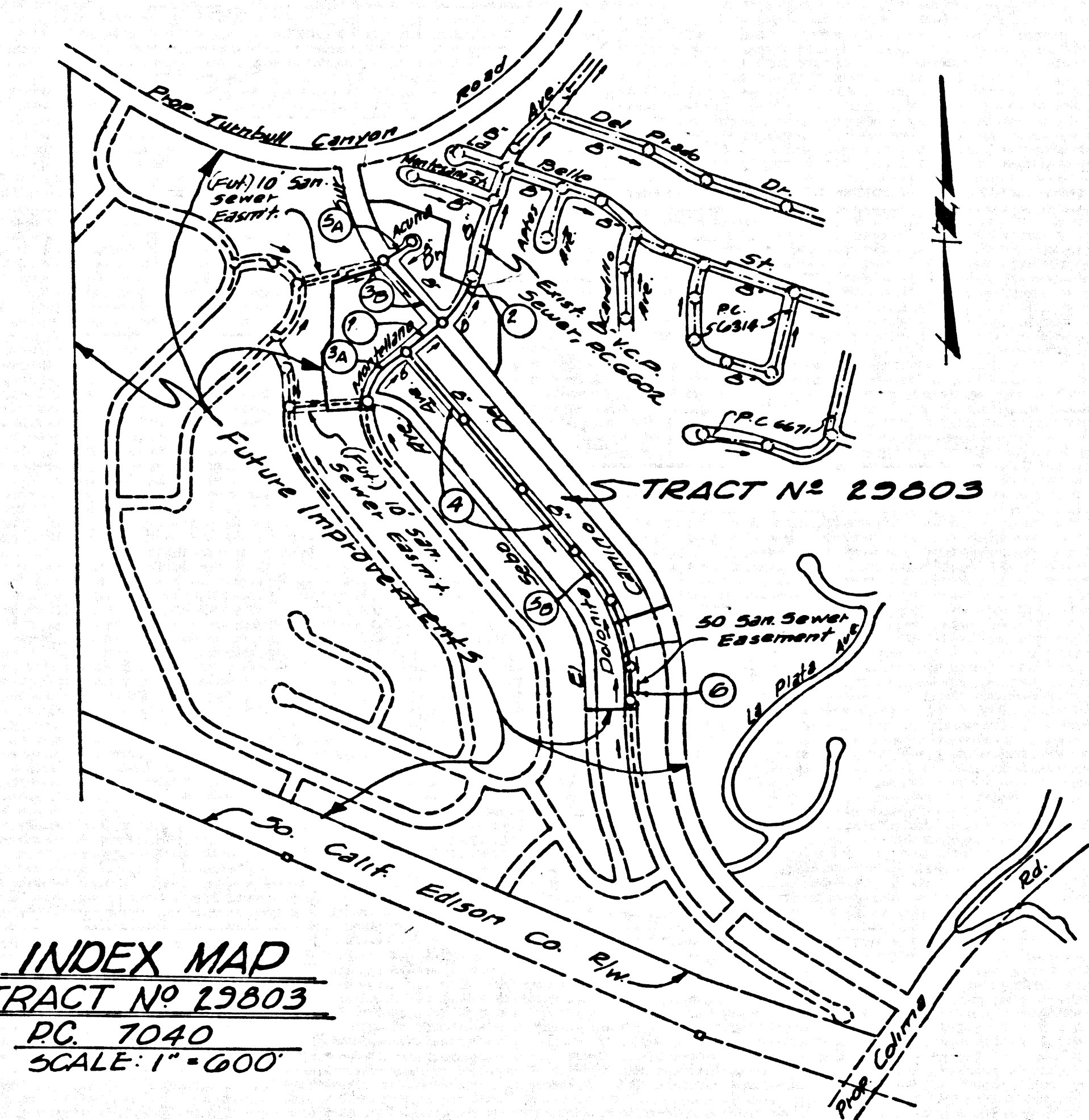


B.M. 561611 ELEV. 574.206
 Top of South of Blvd of Cars
 East Wall of House No 12860
 Los Altos Dr. 31.50 of 6' 600
 E. of La Cuesta Ave.
 WHITTIER QUAD. 19 55



Note:
 The existence and approximate location of underground utilities or structures were determined by a search of the available public records. To the best of our knowledge there are no existing underground utilities or structures except as shown on this map.
 The contractor is required to take due precautionary measures to protect the utilities or structures shown and any other utilities or structures of the area. It shall be the contractor's responsibility to notify the owners of the utilities or structures concerned before starting work.

Any connection to this sewage system of County Sanitation District, provided directly or indirectly by the sewers shown on these plans, shall be considered a temporary connection until all sewer service is annexed to said district. At which time the connection shall become permanent. If for any reason the annexation to the district of any area sewer hereunder is not completed, the property not in the district will be required to disconnect unless a contract is entered into with the district providing for the disposal of sewage from the area.

DOUBLE VERTICAL SCALE LA PUENTE BLDG. DIST. NO. 2

PROFILE ALIGNMENT AND GRADE OF P.C. 7040
 SANITARY SEWERS PAGE 1

CONSTRUCTED IN
TRACT No 29803
 PRIVATE CONTRACT NO. 7040

W.S. 574 38
 3 SHEETS, 6 PAGES
 SCALE: VERT. 1"=5'
 HORIZ. 1"=40' JUNE, 1964

PREPARED IN THE OFFICES OF
KEMMERER ENG. CO. INC.
 145 No. Painter Ave., Whittier, California
 by **Robert R. Flores**
 REG. C. E. NO. 11349

FOR LEGEND SEE PLAN NO. 5-64

- NOTES:
- PROVIDE STAKES ON THE PROPERTY LINE OR PROPERTY LINES PRODUCED AT RIGHT ANGLES TO THE SEWER LINE AT THE CENTER LINE OF EACH MANHOLE.
 - NO REPRESENTATIVE OF THE COUNTY ENGINEER WILL SURVEY OR LAY OUT ANY PORTION OF THE WORK.
 - THE PRIVATE ENGINEER SHALL FURNISH THE COUNTY ENGINEER WITH GRADE SHEETS AND STATIONING FOR ALL HOUSE LATERALS AND Y BRANCHES AND SHALL PROVIDE STAKES FOR THEM AT THEIR PROPER LOCATIONS WITH STATIONING PLAINLY MARKED. ALL HOUSE LATERALS SHALL BE CONSTRUCTED IN A STRAIGHT ALIGNMENT AT RIGHT ANGLES FROM THE MAIN LINE SEWER EXCEPT AS SHOWN ON THE PLANS. HOUSE LATERALS FROM CHIMNEYS SHALL NOT HAVE AN ANGLE OF LESS THAN 45° WITH THE MAIN LINE SEWER. ANY CHANGE IN ALIGNMENT SHALL BE REQUESTED BY WRITING BY THE PRIVATE ENGINEER.
 - THE PRIVATE ENGINEER SHALL FURNISH THE HOUSE LATERAL OFFSETS AT THE PROPERTY LINE AND THE TOP OF CURB ELEVATION FOR EACH HOUSE LATERAL ON THE GRADE SHEET.
 - NO REVISIONS SHALL BE MADE IN THESE PLANS WITHOUT THE APPROVAL OF THE COUNTY ENGINEER.
 - THE CONTRACTOR SHALL NOTIFY THE CONSTRUCTION DIVISION BY TELEPHONE, MADISON 9-2747, EXT. 81531, AT LEAST TWENTY-FOUR HOURS BEFORE STARTING ANY WORK UNDER THIS CONTRACT.
 - MANHOLES SHALL BE BRICK SEWER STRUCTURES PER S-104. PRECAST CONCRETE MANHOLES PER S-135 OR S-173 MAY BE USED AS AN ALTERNATE IN LOCATIONS APPROVED BY THE COUNTY ENGINEER.
 - USE STANDARD MANHOLE FRAMES AND COVERS, S-107, EXCEPT AS NOTED.
 - MANHOLE TOPS IN UNIMPROVED AREAS OR WAYS TO BE SIX INCHES ABOVE FINISHED GRADE.
 - USE EXTRA STRENGTH PIPE. ALL PIPE IS STANDARD DEPTH EXCEPT AS NOTED.
 - USE CEMENT MORTAR OR MECHANICAL COMPRESSION JOINTS FOR ALL V.C.P. JOINTS PER SPEC. SECS. 34 & 48.
 - WHERE EVER GROUND WATER IS ENCOUNTERED DURING THE CONSTRUCTION OF THE SEWERS, THE V.C.P. JOINTS SHALL BE OF JOINT "COMPOUND" PER SPEC. SECS. 33 & 48. OF MECHANICAL COMPRESSION JOINTS PER SPEC. SEC. 34.
 - IF A POWER POLE IS WITHIN THREE FEET OF THE SEWER, THE SEWER SHALL BE ENCASED, PER S-172, CASE III, TWO FEET ON EITHER SIDE FROM THE POINT OF INTERFERENCE.
 - IF DURING THE COURSE OF CONSTRUCTION IT IS DETERMINED THAT THERE IS LESS THAN FOUR FEET OF COVER OVER THE TOP OF A MAIN LINE OF HOUSE LATERAL V.C.P. SEWER WHICH IS NOT INDICATED ON THE PLANS, THE PIPE SHALL BE ENCASED PER S-172, CASE III, UNLESS OTHERWISE APPROVED BY THE COUNTY ENGINEER.
 - HOUSE LATERALS TO BE CONSTRUCTED WITH INVERTS AT PROPERTY LINE... FEET BELOW CURB GRADE EXCEPT AS NOTED.
 - RESURFACE ALL TRENCHES WITHIN PAVED AREAS TO MEET L.A. COUNTY ROAD DEPT. OR CALIFORNIA STATE HIGHWAY REQUIREMENTS IN ACCORDANCE WITH PERMITS.
 - FOR ALLOWABLE USAGE TEST USE FORMULA NO. 2, SPEC. SEC. 44.
 - ALL STATE AND LOCAL TRENCH SAFETY ORDERS WILL BE RIGIDLY ENFORCED.
 - Construction in Filled Areas:
 (a) An acceptable method of compaction shall be used in the construction of the trench. The construction shall be in accordance with a S.F.M. standard of Part 2 of S-23.
 (b) No construction is permitted in filled areas where the relative density of compaction is less than 80%.
 (c) If the relative density of compaction is less than 80% at any point in the trench, the contractor shall compact the trench to a special base course per S-172, CASE III, Special Manhole Bases Per S-173, 210 requires.
 (d) If the relative density of compaction is 80% or greater, the special provisions in (c) are not required.

NOTE:
 GRADE TO WHICH THIS IMPROVEMENT IS TO BE CONSTRUCTED ARE SHOWN ON PLANS AND PROFILES. GRADE POINTS FOR TOP OF CURB, CENTER LINE OF STREETS, OR CENTER LINE OF ALLEYS ARE SHOWN BY CIRCLES ON PROFILES. GRADE POINTS BETWEEN DESIGNATED POINTS THE GRADE SHALL BE ESTABLISHED SO AS TO CONFORM TO A STRAIGHT LINE DRAWN BETWEEN SAID DESIGNATED POINTS. ELEVATIONS ARE IN FEET ABOVE U.S.C. & G.S. MEAN SEA LEVEL DATUM OF 1929.
 THIS DRAWING AND THE DATA HEREON ARE HEREBY MADE A PART OF THE SPECIFICATIONS.
 WORK SHALL BE CONSTRUCTED ACCORDING TO STANDARD SPECIFICATIONS DATED 12/29/62, ON FILE IN THE OFFICE OF THE COUNTY ENGINEER AND SHALL BE PROSECUTED ONLY BY THE PRESIDING OFFICER OF THE COUNTY ENGINEER.
 BEFORE WORK CAN BE STARTED, THE CONTRACTOR MUST OBTAIN A PERMIT TO EXCAVATE IN COUNTY STREETS FROM THE L.A. COUNTY ROAD DEPT., DISTRICT OFFICE AND FROM THE L.A. COUNTY ENGINEER, ROOM 302, COUNTY ENGINEERING BUILDING, 108 WEST SECOND STREET OR SAN DIMAS REGIONAL OFFICE, SUFFICIENT TO COVER THE COST OF CONSTRUCTION INSPECTION AND RECORD PLANS.
 APPROVAL OF THIS PLAN BY THE COUNTY OF LOS ANGELES DOES NOT CONSTITUTE A REPRESENTATION AS TO THE ACCURACY OF THE LOCATION OF OR THE EXISTENCE OR NON-EXISTENCE OF ANY UNDERGROUND UTILITY PIPE, OR STRUCTURE WITHIN THE LIMITS OF THE PROJECT. THIS NOTICE APPLIES TO ALL PAGES.
 IF WORK IS TO BE DONE ON A STATE HIGHWAY, A PERMIT MUST BE OBTAINED FROM THE STATE OF CALIFORNIA, DIVISION OF HIGHWAYS, 130 SOUTH SPRING STREET, LOS ANGELES, CALIFORNIA.

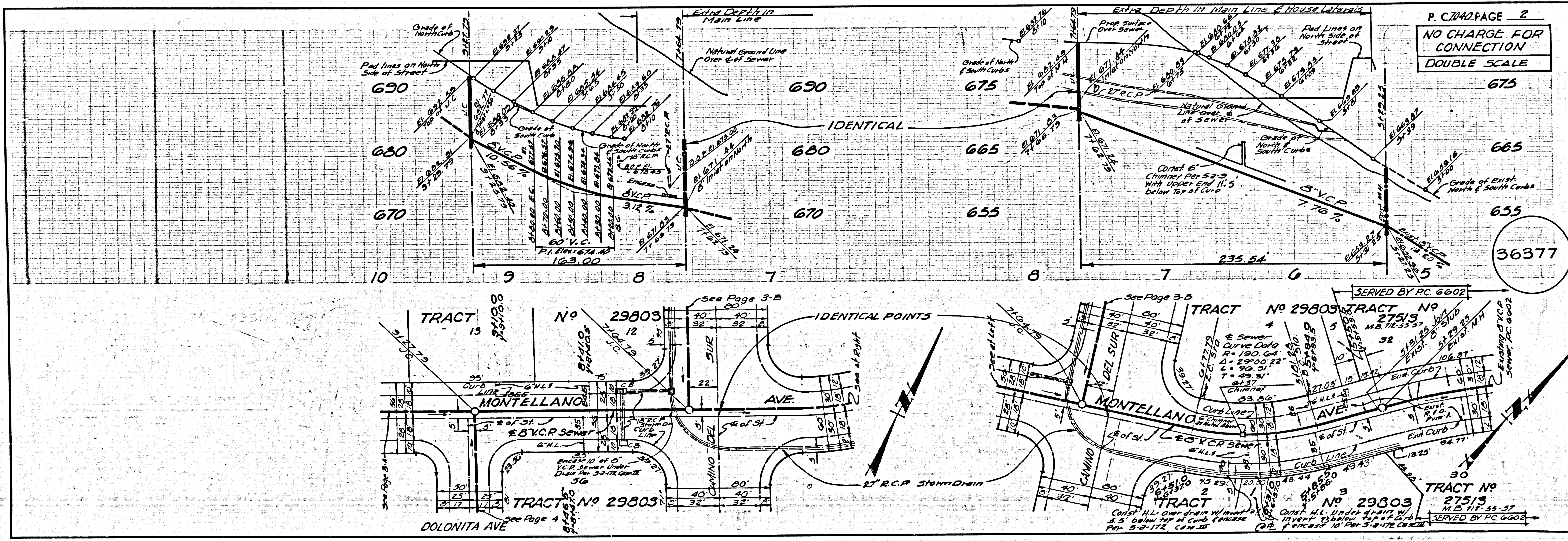
COUNTY OF LOS ANGELES, CALIFORNIA
 JOHN A. LAMBIE, COUNTY ENGINEER J. D. PARKHURST, CHIEF ENGINEER
 APPROVED BY *Robert R. Flores* ASSISTANT SANITATION ENGINEER APPROVED BY *J. D. Parkhurst* OFFICE ENGINEER

SUBMITTED BY *Robert R. Flores* SAN DIMAS REGIONAL ENGINEER
 CHECKED BY *Robert R. Flores* 9-3-64 REG. C.E. NO. 11636

36376

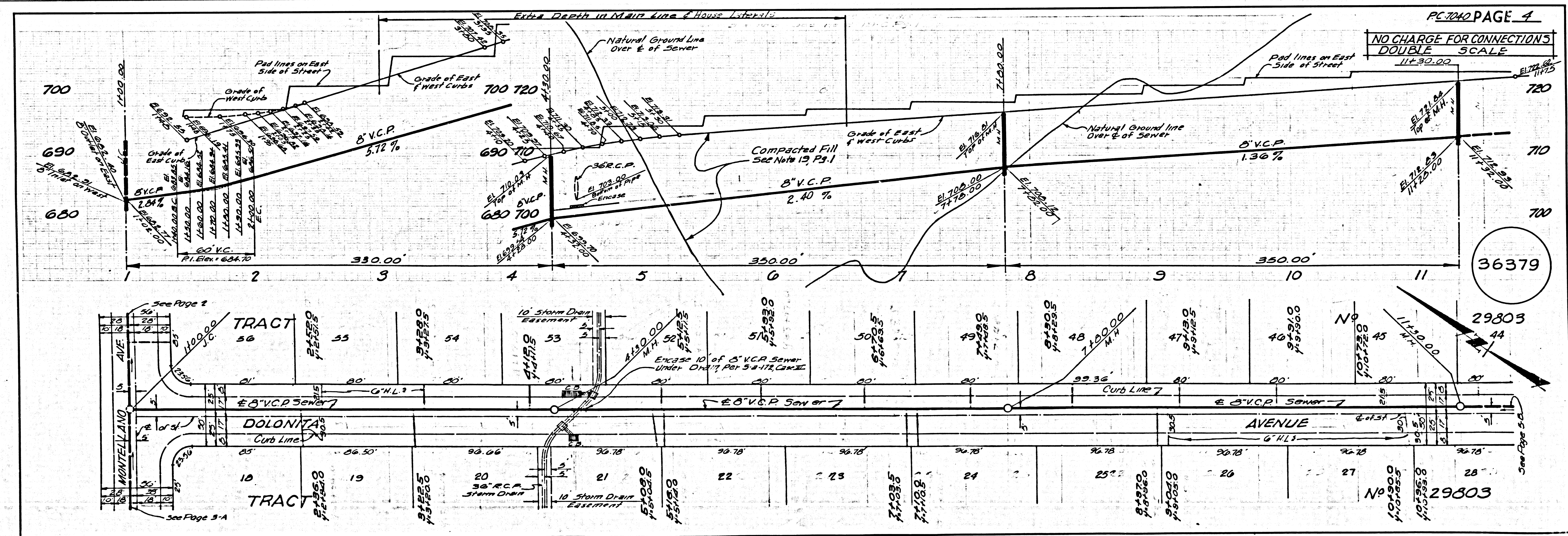
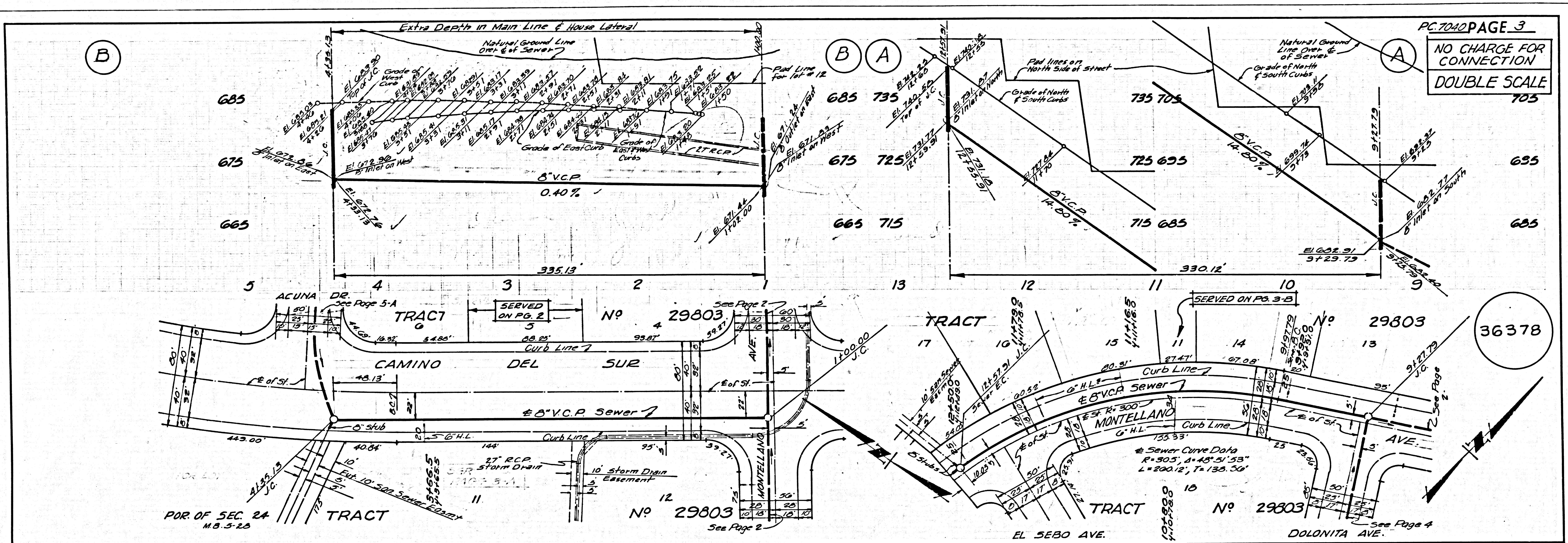
COLLECT CHARGES AS INDICATED
 P.R. 5-11-64 9-3-64

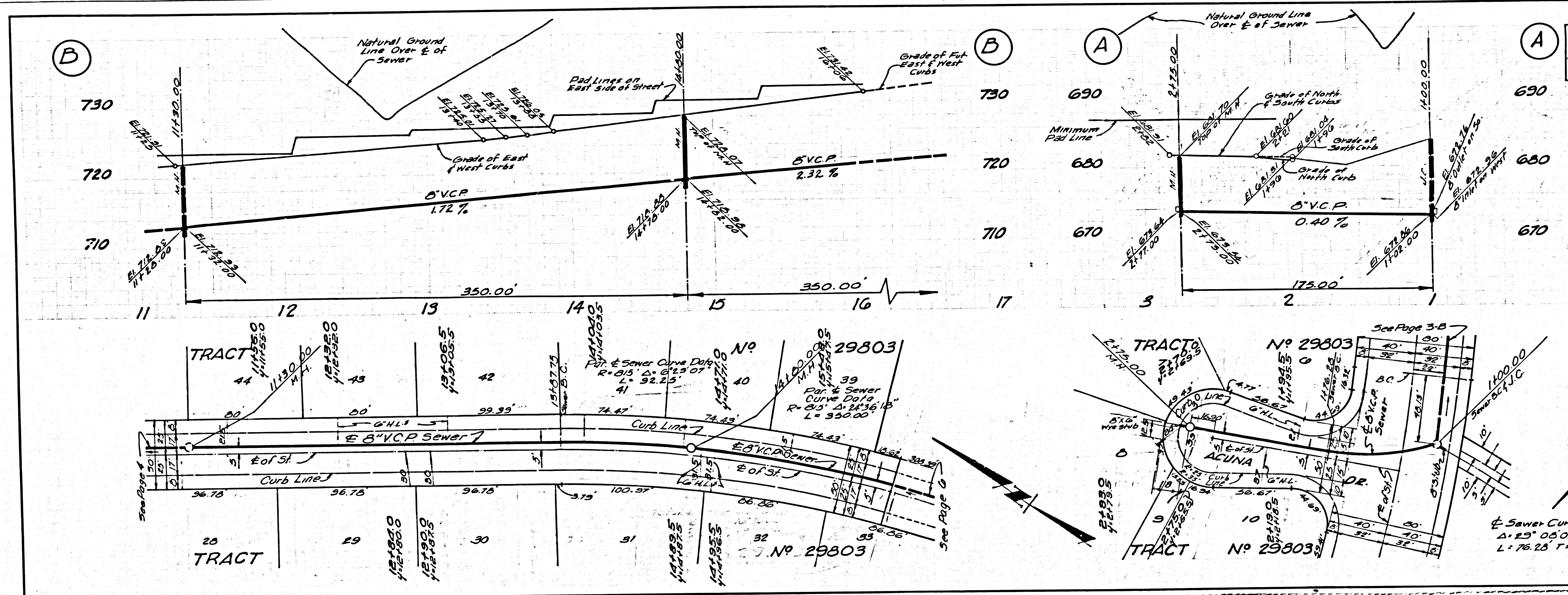
NO CONNECTIONS FOR THE DISPOSAL OF INDUSTRIAL WASTES SHALL BE MADE TO SEWERS SHOWN ON THESE DRAWINGS WITHOUT WRITTEN PERMISSION FROM THE CHIEF ENGINEER AND GENERAL MANAGER OF THE COUNTY SANITATION DISTRICTS.



P.C. 7040 PAGE 2
 NO CHARGE FOR CONNECTION
 DOUBLE SCALE

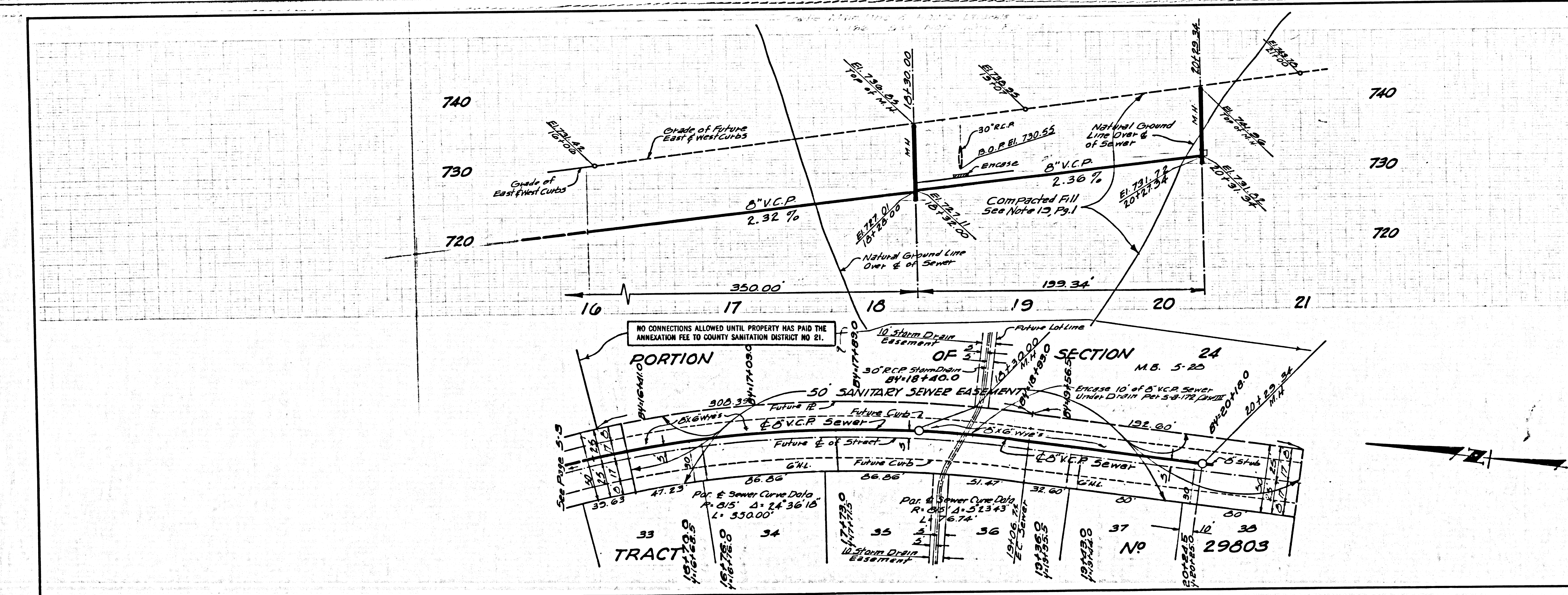
36377





PC 2040 PAGE 5
 NO CHARGE FOR CONNECTION
 DOUBLE SCALE

36380



PC 2040 PAGE 6
 NO CHARGE FOR CONNECTIONS
 DOUBLE SCALE

36381