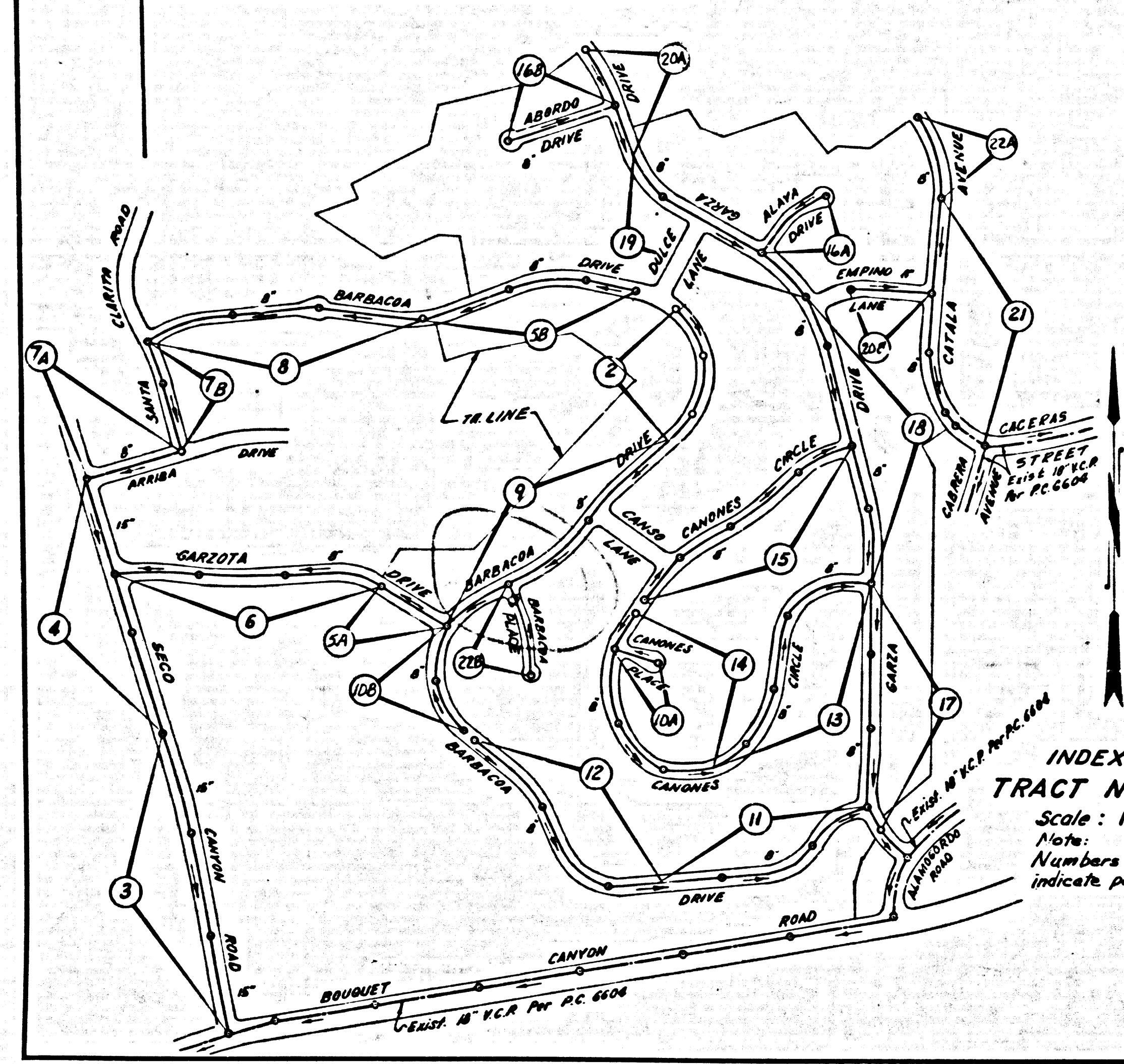


B.M. SL 622 ELEV 1208.90'
 SET. RD. DEPT. B.M. T&R IN CNTR 18" S.D.
 CONC. SLAB 2.10' N E SAN FRANCISCO
 CANYON RD. 2.60' E BOUQUET CANYON RD.
 PROP. 2.85' E.Y. PA. # 1059476 E.
 QUAD. 1958 AD.



REVISION
 LOWER SEWER LINE BETWEEN STA. 2+07.00
 AND 4+74.61 OF PAGE 21. 1/4" BETWEEN
 THESE STATIONS TO BE LAID FLAT.
 APPROVED BY *[Signature]*
 REGIONAL ENGINEER

REVISION
 ADD HOUSE LATERALS TO LOTS 2 OF TR. 15761,
 LOT 4 TR. 15761, AND LOT 4 TR. 1949.
 APPROVED BY *[Signature]*
 REGIONAL ENGINEER

NO CONNECTIONS FOR THE DISPOSAL OF
 INDUSTRIAL WASTES SHALL BE MADE TO
 SEWERS SHOWN ON THESE DRAWINGS
 WITHOUT WRITTEN PERMISSION FROM THE
 CHIEF ENGINEER AND GENERAL MANAGER
 OF THE COUNTY SANITATION DISTRICTS.

**DOUBLE SCALE
 NEWHALL BLDG. DIST. NO. 8.2**

PROFILE ALIGNMENT AND GRADE OF **P.C. 7055**
SANITARY SEWERS PAGE 1
 CONSTRUCTED IN

36594

TRACT NO. 29380
 PRIVATE CONTRACT NO. 7055
 W.S. 62
 11 SHEETS, 22 PAGES
 SCALE: VERT. 1"=4' AUG. 1964
 HORIZ. 1"=80'
 PREPARED IN THE OFFICES OF
VOORHEIS-TRINDLE CO.
 BY *[Signature]*
 THOMAS WELSH REG. C.E. NO. 14478

- NOTE:
- PROVIDE STAKES ON THE PROPERTY LINE OR WHOLE LINES PRODUCED AT RIGHT ANGLES TO THE SEWER LINE AT THE CENTER LINE OF EACH MANHOLE.
 - NO REPRESENTATIVE OF THE COUNTY ENGINEER WILL SURVEY OR LAY OUT ANY PORTION OF THE WORK.
 - THE PRIVATE ENGINEER SHALL FURNISH THE COUNTY ENGINEER WITH GRADE SHEETS AND STATIONING FOR ALL HOUSE LATERALS AND T-BRANCHES AND SHALL PROVIDE STAKES FOR THEM AT THEIR PROPER LOCATIONS WITH STATIONING PLAINLY MARKED. ALL HOUSE LATERALS SHALL BE CONSTRUCTED IN A STRAIGHT ALIGNMENT AT RIGHT ANGLES FROM THE MAIN LINE SEWER EXCEPT AS SHOWN ON THE PLANS. IRREGULAR LATERALS SHALL HAVE AN ANGLE OF 90 DEGREES WITH THE MAIN LINE SEWER. ANY CHANGE IN ALIGNMENT SHALL BE REQUESTED IN WRITING BY THE PRIVATE ENGINEER.
 - THE PRIVATE ENGINEER SHALL FURNISH THE HOUSE LATERAL DEPTH AT THE PROPERTY LINE BELOW THE TOP OF CURB ELEVATION FOR EACH HOUSE LATERAL ON THE GRADE LINES.
 - NO REVISIONS SHALL BE MADE BY THESE PLANS WITHOUT THE APPROVAL OF THE COUNTY ENGINEER.
 - THE CONTRACTOR SHALL NOTIFY THE CONSTRUCTION DIVISION BY TELEPHONE, MADISON 9-4747, EXT. 8152, AT LEAST TWENTY-FOUR HOURS BEFORE STARTING ANY WORK UNDER THIS CONTRACT.
 - MANHOLES SHALL BE BRICK SEWER STRUCTURES PER S-1-102. PRECAST CONCRETE MANHOLES PER S-1-125 OR S-1-273 MAY BE USED AS AN ALTERNATE IN LOCATIONS APPROVED BY THE COUNTY ENGINEER.
 - USE STANDARD MANHOLE FRAMES AND COVERS, S-1-17, EXCEPT AS NOTED.
 - MANHOLE TOPS ON UNIMPROVED STREETS OR ALLEYS TO BE 200 INCHES ABOVE FINISHED GRADE.
 - USE EXTRA STRENGTH PIPE. ALL PIPE IS STANDARD DEPTH EXCEPT AS NOTED.
 - USE CHANGE ANGLE OR MECHANICAL COMPRESSION JOINTS FOR ALL V.C.P. JOINTS PER SPECS., SECS. 54 & 48, § 4-9.
 - WHERE EVER GROUPED SPACERS IS SPECIFIED REGARDING THE CONSTRUCTION OF THE SEWERS, THE V.C.P. JOINTS SHALL BE OF JOINT COMPOUND PER SPECS., SECS. 54 & 48, OR MECHANICAL COMPRESSION JOINTS PER SPECS., SEC. 54.
 - IF A POWER POLE IS WITHIN THREE FEET OF THE SEWER, THE SEWER SHALL BE BRICKLINED, PER S-1-172, CASE III, TWO FEET ON EITHER SIDE FROM THE POINT OF INTERFERENCE.
 - IF DURING THE COURSE OF CONSTRUCTION IT IS DETERMINED THAT THERE IS LESS THAN FOUR FEET OF COVER OVER THE TOP OF A MAIN LINE OR HOUSE LATERAL V.C.P. SEWER WHICH IS NOT INDICATED ON THE PLANS, THE PIPE SHALL BE BRICKLINED PER S-1-172, CASE III, UNLESS OTHERWISE APPROVED BY THE COUNTY ENGINEER.
 - HOUSE LATERALS TO BE CONSTRUCTED WITH INVERTS AT PROPERLY ... FEET BELOW CURB GRADE EXCEPT AS NOTED.
 - RESURFACE ALL TRENCHES WITHIN PAVED AREAS TO MEET L.A. COUNTY ROAD DEPT. OR CALIFORNIA STATE HIGHWAY REQUIREMENTS IN ACCORDANCE WITH PERMITS.
 - FOR ALLOWABLE LEAKAGE TEST USE FORMULA NO. ... SPECS., SEC. 84.
 - ALL STATE AND LOCAL TRENCH SAFETY ORDERS WILL BE FULLY ENFORCED.
 - A NO CONSTRUCTION WILL BE PERMITTED IN FILLED AREAS UNLESS ACCEPTABLE CERTIFICATION IS SUBMITTED TO THE CONSTRUCTION DIVISION OF THE COUNTY ENGINEER'S DEPARTMENT THAT RELATIVE COMPACTION IS GREATER THAN 90%.
 - A. IF COMPACTION IS LESS THAN 90%, THE SEWER MUST BE CRADLED AS SHOWN ON PLANS PER S-1-166.
 - B. IF COMPACTION IS GREATER THAN 90%, CRADLE IS NOT REQUIRED.
 - UPON ACCEPTABLE CERTIFICATION TO THE CONSTRUCTION DIVISION OF THE COUNTY ENGINEER THAT THE RELATIVE COMPACTION IS GREATER THAN 90%, BASES PER S-1-125 WILL NOT BE REQUIRED.

NOTE:
 GRADES TO WHICH THIS IMPROVEMENT IS TO BE CONSTRUCTED ARE SHOWN ON PLANS AND PROFILES. GRADE POINTS FOR TOP OF CURBS, CENTER LINE OF STREETS, OR CENTER LINE OF ALLEYS ARE SHOWN BY CIRCLES ON PROFILES. AT ALL POINTS BETWEEN DESIGNATED POINTS THE GRADE SHALL BE ESTABLISHED TO ADJUST TO A STRAIGHT LINE DRAWN BETWEEN SAID DESIGNATED POINTS.
 THIS DRAWING AND THE DATA HEREON ARE HEREBY MADE A PART OF THE SPECIFICATIONS.
 WORK SHALL BE CONSTRUCTED ACCORDING TO STANDARD SPECIFICATIONS DATED MAY 23, 1958, ON FILE IN THE OFFICE OF THE COUNTY ENGINEER AND SHALL BE PROSECUTED UNDER PERMITS OBTAINED FROM THE COUNTY ENGINEER.
 IF WORK IS TO BE DONE IN A STATE HIGHWAY, A PERMIT MUST BE OBTAINED FROM THE STATE OF CALIFORNIA, DIVISION OF HIGHWAYS, 279 NORTH SPRING STREET, LOS ANGELES, CALIFORNIA.

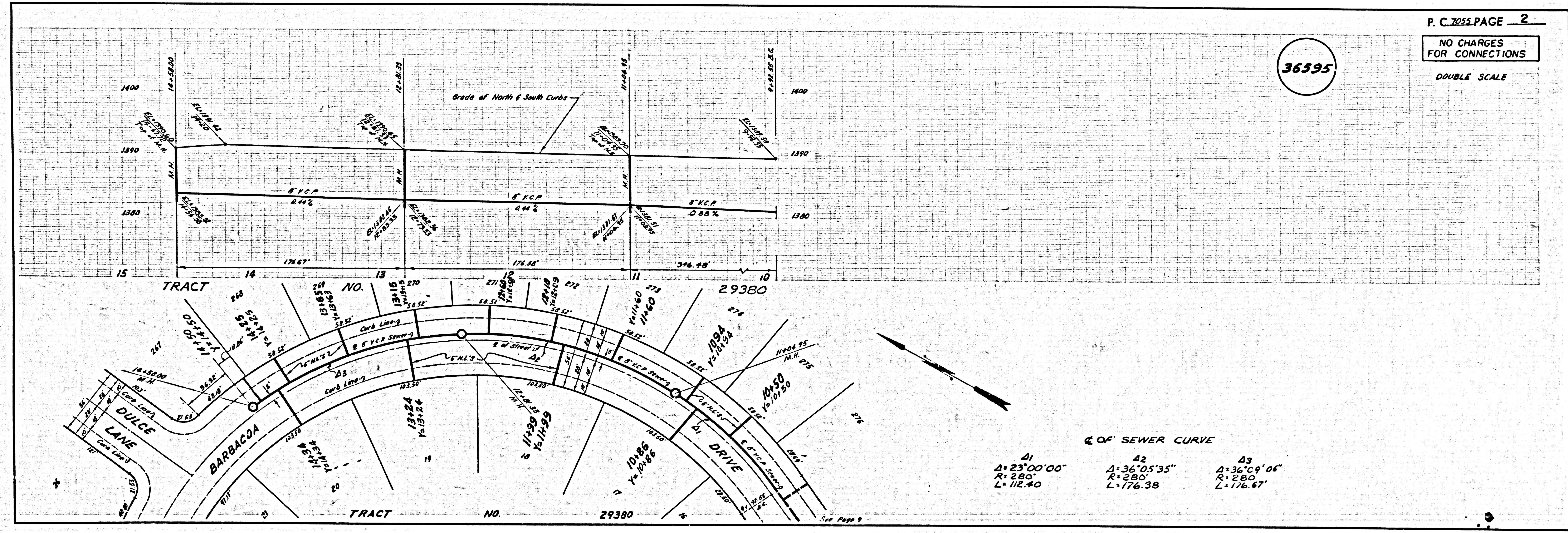
COUNTY OF LOS ANGELES, CALIFORNIA
 JOHN A. LAMBIE, COUNTY ENGINEER J. D. PARKHURST, CHIEF ENGINEER
 CO. SAN. DIST. NO. 82
 APPROVED BY *[Signature]* ASSISTANT SANITATION ENGINEER APPROVED BY *[Signature]* OFFICE ENGINEER

CHECKED BY *[Signature]* 11-19-64
 REG. C.E. NO. 35505

Legal Revised
 9-21-72 by
 Pages 154, 158, 19 & 20
 G. Haney

J.N. 0263.62

**COLLECT CHARGES
 AS INDICATED**
[Signature] 11-19-64

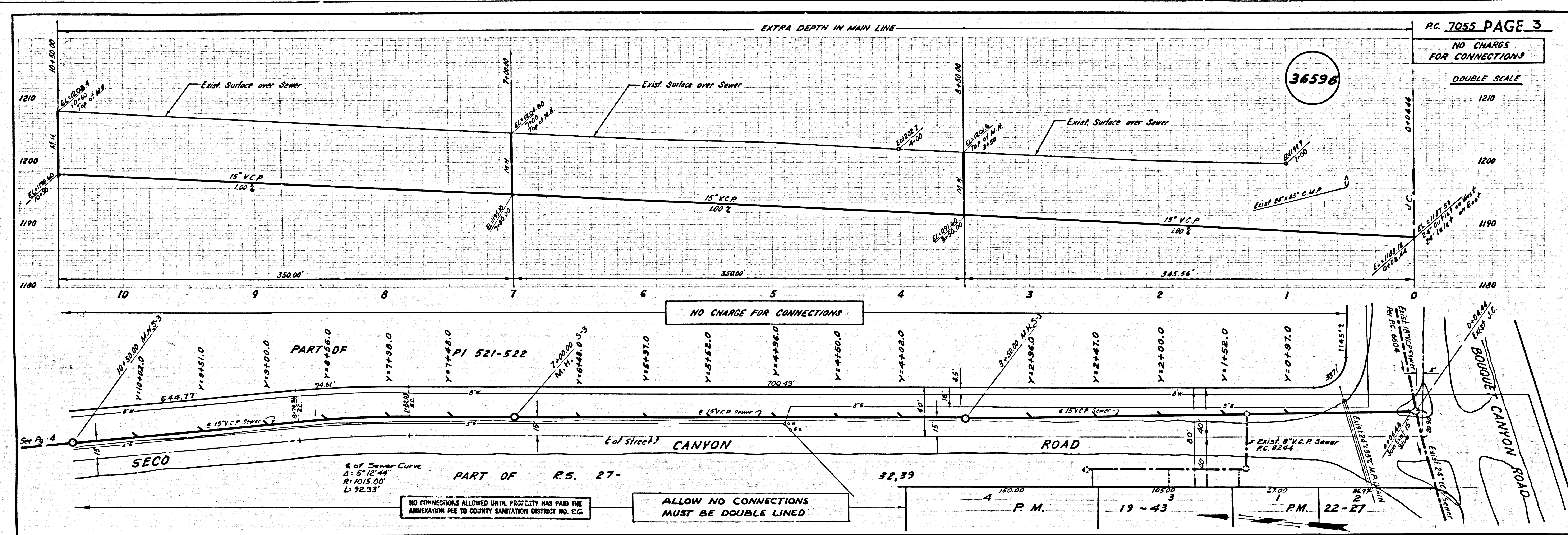


36595

P. C. 7055 PAGE 2
 NO CHARGES
 FOR CONNECTIONS
 DOUBLE SCALE

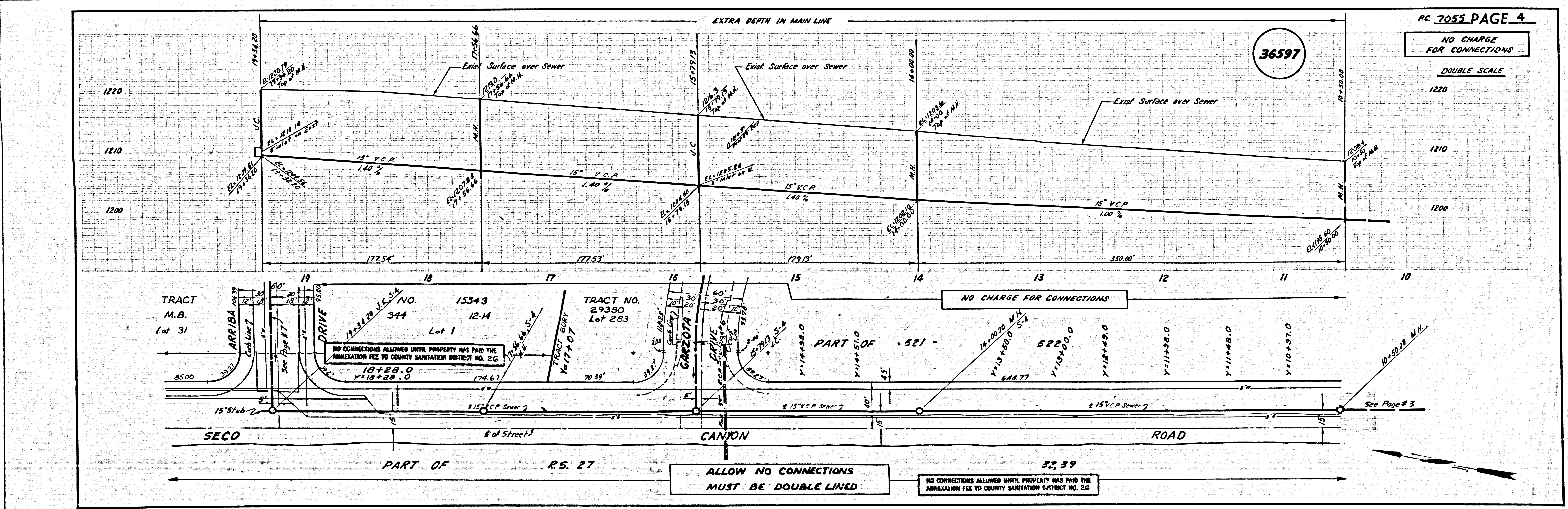
DATA OF SEWER CURVE

Δ	R	L
Δ1 23°00'00"	R1 280'	L1 112.40'
Δ2 36°05'35"	R2 280'	L2 176.38'
Δ3 36°09'06"	R3 280'	L3 176.67'



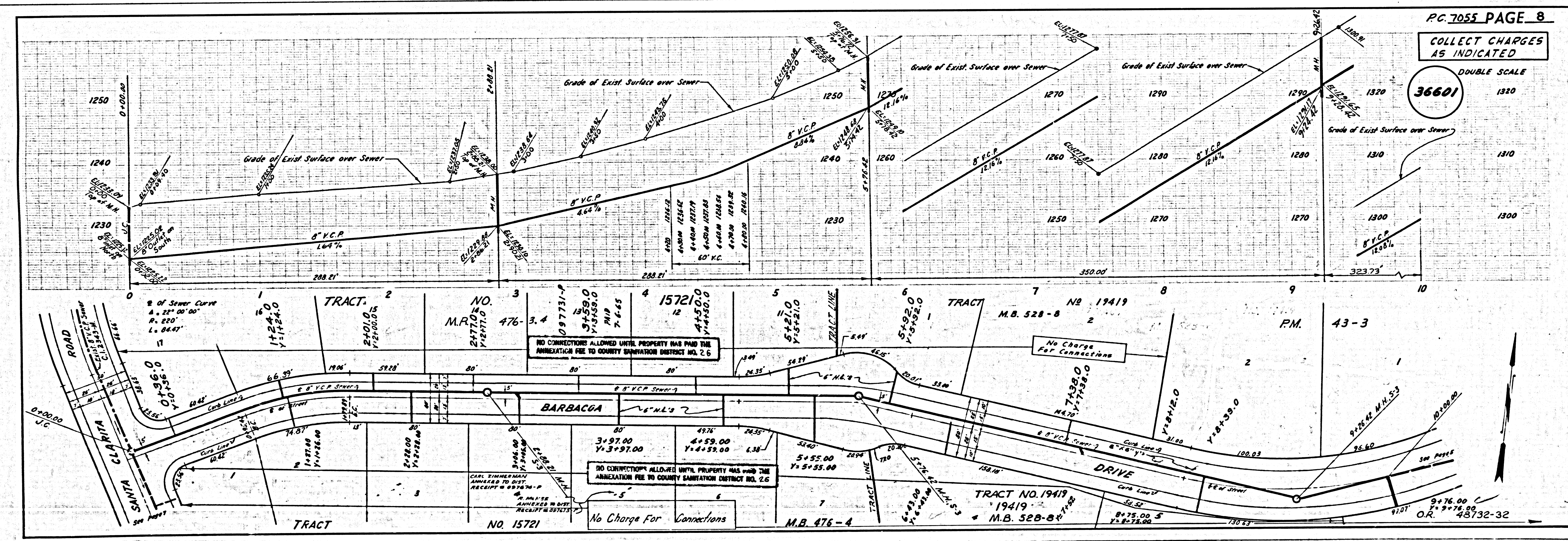
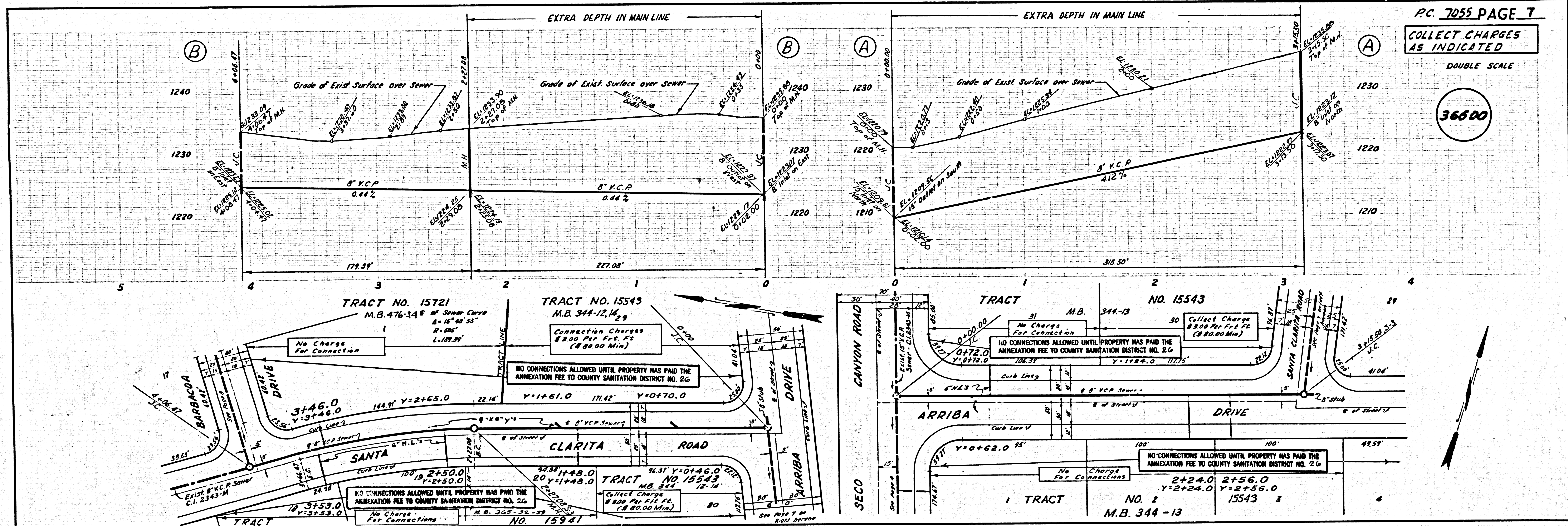
PC 7055 PAGE 3
 NO CHARGE FOR CONNECTIONS
 DOUBLE SCALE

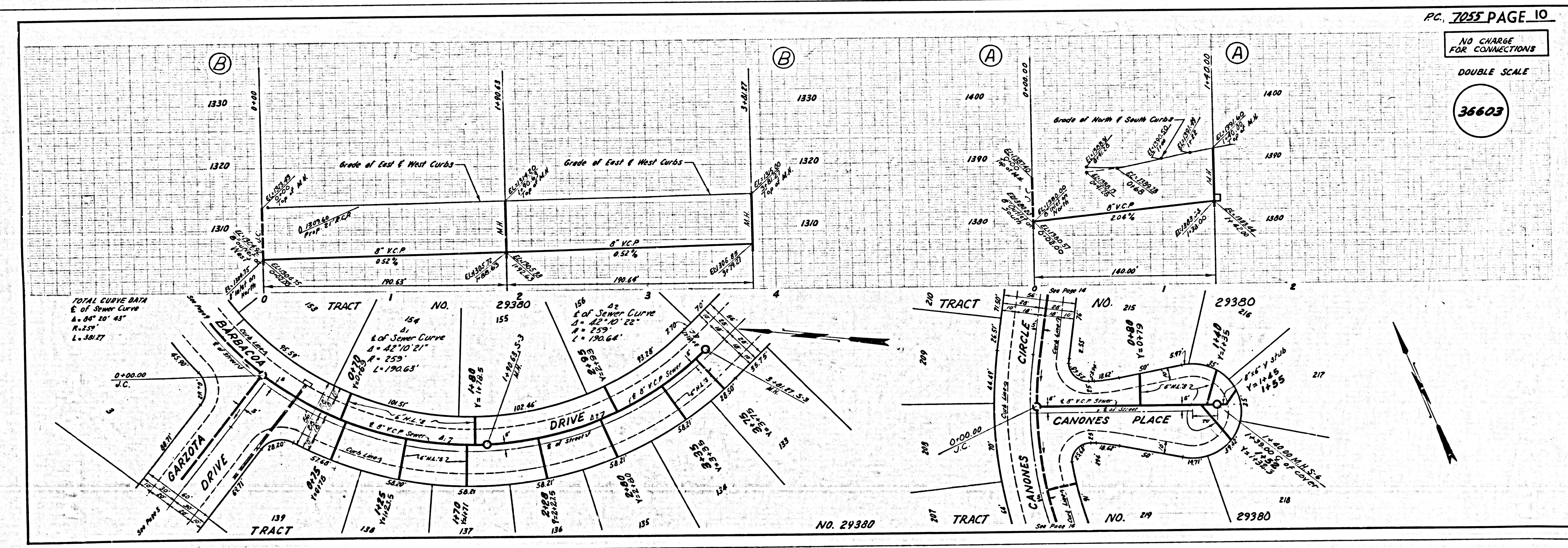
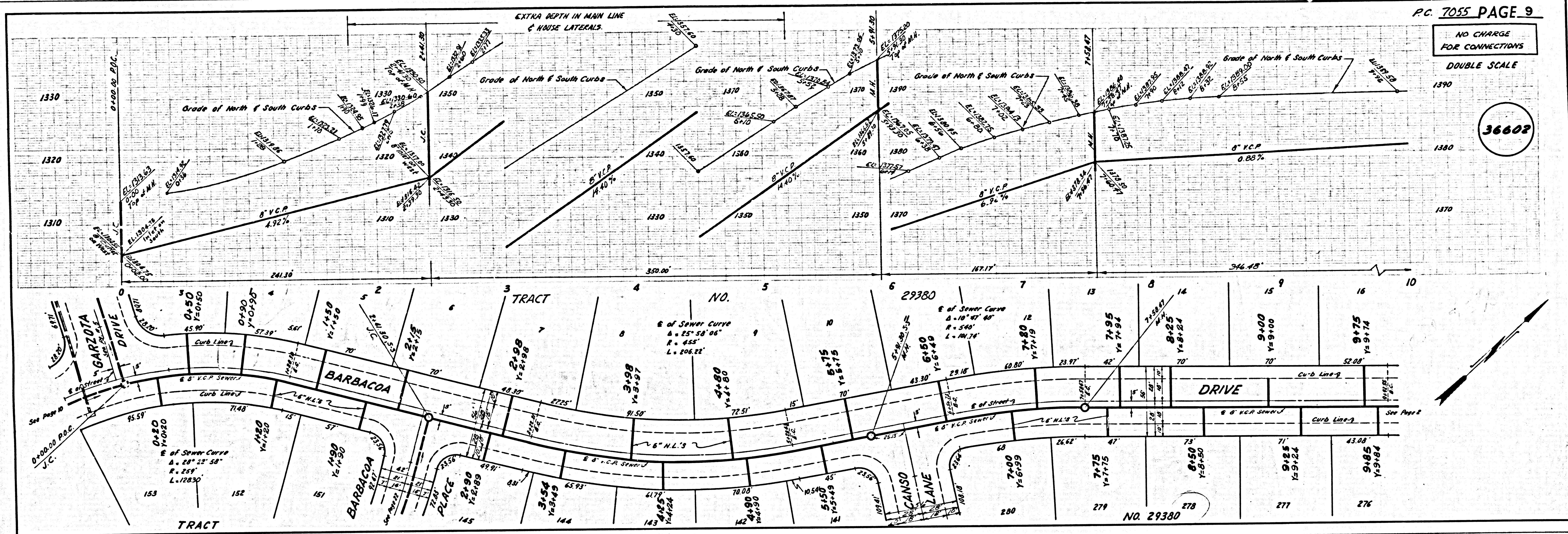
36596



PC 7055 PAGE 4
 NO CHARGE FOR CONNECTIONS
 DOUBLE SCALE

36597

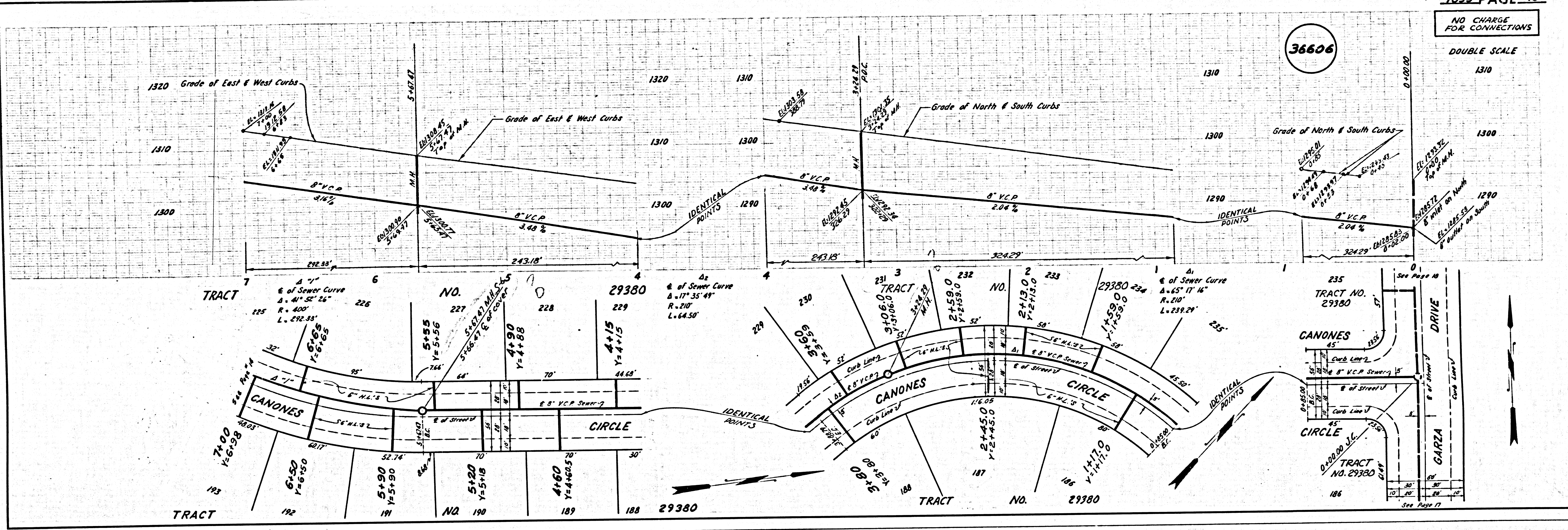




BASE 17211 L.A. COUNTY SEWER SHEET NO. 2 SO. CAL. BLUEPRINT CO.

NO CHARGE FOR CONNECTIONS
DOUBLE SCALE

36606



NO CHARGE FOR CONNECTIONS
DOUBLE SCALE

36607

