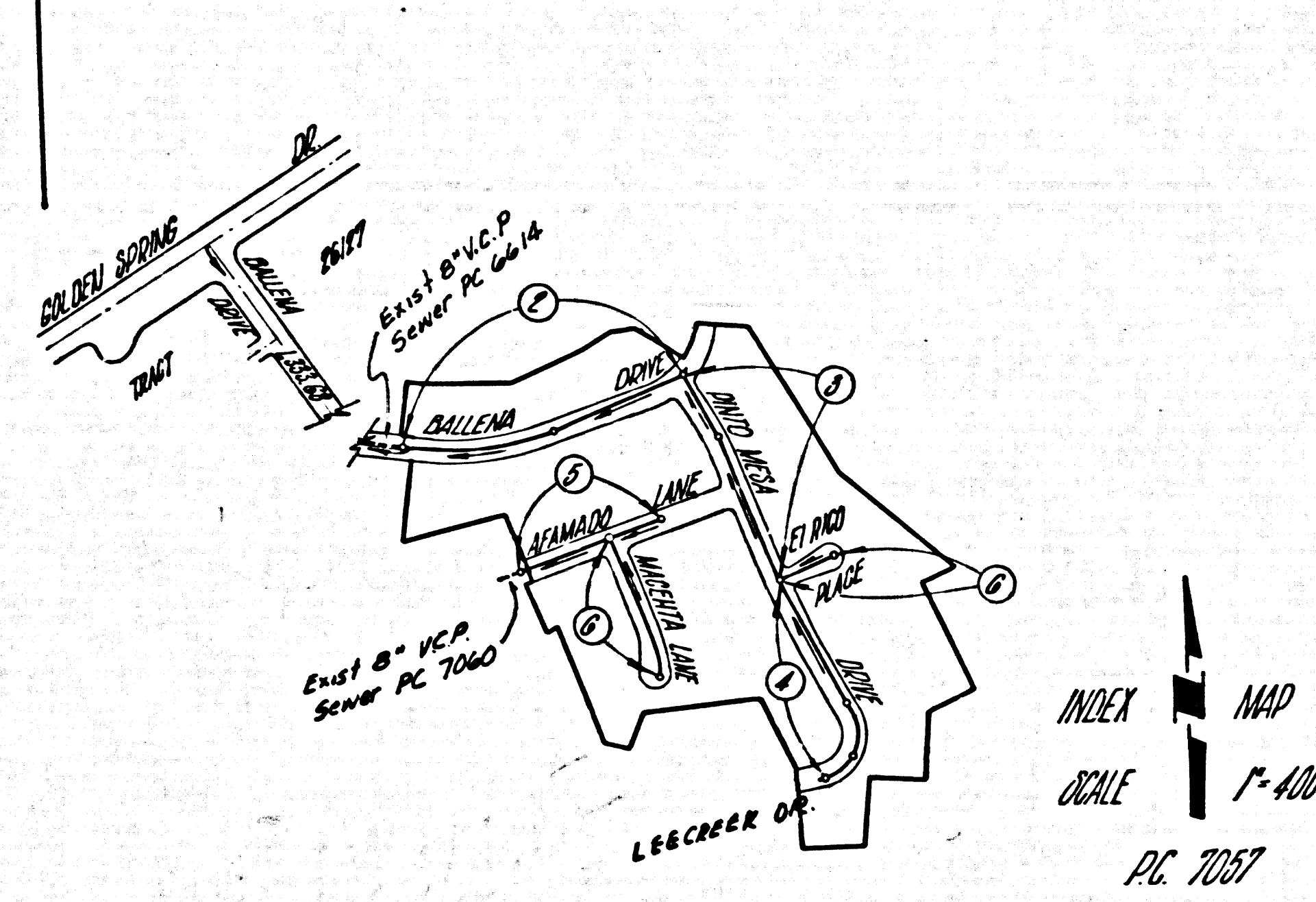


B.M. 262788 ELEV. 862.788
 200 B.M. Top W. 125' x 2' N. 820' @ N.W. cor.
 Diamond Bar Blvd. & Golden Spring Dr.
 101' W. x 189' N. & Intersection.
 OTTERBEIN QUAD. 19 45



INDEX MAP
 SCALE 1" = 400'
 P.C. 7057

ISSUE NO HOUSE CONNECTION
 PERMITS UNTIL P.C. 7060 IS
 ACCEPTED

PRIVATE ENGINEER'S
 NOTICE TO CONTRACTOR
 THE EXISTENCE AND LOCATION OF ANY UNDERGROUND UTILITY PIPES
 OR STRUCTURES SHOWN ON THESE PLANS ARE OBTAINED BY A SEARCH
 OF THE AVAILABLE RECORDS. TO THE BEST OF OUR KNOWLEDGE THERE
 ARE NO EXISTING UTILITIES EXCEPT AS SHOWN ON THIS MAP.
 THE CONTRACTOR IS REQUIRED TO TAKE PRECAUTIONARY MEASURES
 TO PROTECT THE UTILITY LINES SHOWN AND ANY OTHER LINES NOT
 OF RECORD OR NOT SHOWN ON THIS DRAWING.

SAN DIMAS BLDG. DIST. NO. 10

- NOTES
1. PROPERTY STAKES ON THE PROPERTY LINE OR PROPERTY LINES PRODUCED AT RIGHT ANGLES TO THE SEWER LINE AT THE CENTER LINE OF EACH MANHOLE.
 2. NO REPRESENTATIVE OF THE COUNTY ENGINEER WILL SURVEY OR LAY OUT ANY PORTION OF THE WORK.
 3. THE PRIVATE ENGINEER SHALL FURNISH THE COUNTY ENGINEER WITH GRADE SHEETS AND STATIONING FOR ALL HOUSE LATERALS AND Y BRANCHES AND SHALL PROVIDE STAKES FOR THEM AT THEIR PROPER LOCATIONS WITH STATIONING PLAINLY MARKED. ALL HOUSE LATERALS SHALL BE CONSTRUCTED IN A STRAIGHT ALIGNMENT AT RIGHT ANGLES FROM THE MAIN LINE SEWER EXCEPT AS SHOWN ON THE PLANS. HOUSE LATERALS FROM CHIMNEYS SHALL NOT HAVE AN ANGLE OF LESS THAN 45° WITH THE MAIN LINE SEWER. ANY CHANGE IN ALIGNMENT SHALL BE REQUESTED IN WRITING BY THE PRIVATE ENGINEER.
 4. THE PRIVATE ENGINEER SHALL FURNISH THE HOUSE LATERAL DEPTH AT THE PROPERTY LINE BELOW THE TOP OF CURB ELEVATION FOR EACH HOUSE LATERAL ON THE GRADE SHEET.
 5. NO REVISIONS SHALL BE MADE IN THESE PLANS WITHOUT THE APPROVAL OF THE COUNTY ENGINEER.
 6. THE CONTRACTOR SHALL NOTIFY THE CONSTRUCTION DIVISION BY TELEPHONE, MADISON 9-6747, EXT. 8531, AT LEAST TWENTY-FOUR HOURS BEFORE STARTING ANY WORK UNDER THIS CONTRACT.
 7. MANHOLES SHALL BE BRICK SEWER STRUCTURES PER S-104. PRECAST CONCRETE MANHOLES PER S-133 OR S-173 MAY BE USED AS AN ALTERNATE IN LOCATIONS APPROVED BY THE COUNTY ENGINEER.
 8. USE STANDARD MANHOLE FRAMES AND COVERS, S-105.
 9. MANHOLE TOPS IN UNIMPROVED RIGHTS-OF-WAY TO BE SIX INCHES ABOVE FINISHED GRADE.
 10. USE EXTRA STRENGTH PIPE. ALL PIPE IN STANDARD DEPTH EXCEPT AS NOTED.
 11. USE MECHANICAL COMPRESSION JOINTS FOR ALL V.C.P. JOINTS PER SPEC. SEC. 36 & 48 & 49.

12. IF A POWER POLE IS WITHIN THREE FEET OF THE SEWER, THE SEWER SHALL BE ENCASED, PER S-172, CASE II, TWO FEET ON EITHER SIDE FROM THE POINT OF INTERFERENCE.
13. IF DURING THE COURSE OF CONSTRUCTION IT IS DETERMINED THAT THERE IS LESS THAN FOUR FEET OF COVER OVER THE TOP OF A MAIN LINE OR HOUSE LATERAL V.C.P. SEWER WHICH IS NOT INDICATED ON THE PLANS, THE PIPE SHALL BE ENCASED PER S-172, CASE III, UNLESS OTHERWISE APPROVED BY THE COUNTY ENGINEER.
14. HOUSE LATERALS TO BE CONSTRUCTED WITH INVERTS AT PROPERTY LINE. . . . FEET BELOW CURB GRADE EXCEPT AS NOTED.
15. REINFORCE ALL TRENCHES WITHIN PAVED AREAS TO MEET L.A. COUNTY ROAD DEPT. OR CALIFORNIA STATE HIGHWAY REQUIREMENTS IN ACCORDANCE WITH PERMITS.
16. FOR ALLOWABLE USAGE TEST USE FORMULA NO. SPEC. SEC. 54.
17. (A) NO CONSTRUCTION SHALL BE PERMITTED IN FILLED AREAS UNLESS ACCEPTABLE CERTIFICATION IS SUBMITTED TO THE CONSTRUCTION DIVISION OF THE COUNTY ENGINEER'S DEPARTMENT THAT RELATIVE COMPACTNESS IS GREATER THAN 80%.
17. (B) IF COMPACTNESS IS 80% OR GREATER COMPACTNESS AND SPECIAL MAX. BASES ARE NOT REQUIRED.
17. (C) IF COMPACTNESS IS LESS THAN 80% THE SEWER MUST BE ENCASED AS SHOWN IN PLAN PER S-172, CASE III, OR HAVE A SPECIAL CARE COURSE PER S-172, CASE III, AND SPECIAL MANHOLE BASES CONSTRUCTED PER S-105.
18. ALL STREETS AND LOCAL TRENCH SAFETY COURSES WILL BE PROUDLY CONDUCTED.
19. ALL HOUSE LATERALS SHALL BE CONSTRUCTED IN A STRAIGHT ALIGNMENT AT RIGHT ANGLES FROM THE MAIN LINE SEWER EXCEPT AS SHOWN ON THE PLAN.
20. (A) PROTECT IN CAREFUL MANNER THAT HOUSE LATERAL SHALL NOT BE CONSTRUCTED INTERSECTING AT THIS POINT.

COLLECT CHARGES
 AS INDICATED
 R.R. Olson 12-18-63

NO CONNECTIONS FOR THE DISPOSAL OF
 INDUSTRIAL WASTES SHALL BE MADE TO
 SEWERS SHOWN ON THESE DRAWINGS
 WITHOUT WRITTEN PERMISSION FROM THE
 CHIEF ENGINEER AND GENERAL MANAGER
 OF THE COUNTY SANITATION DISTRICTS.

PROFILE ALIGNMENT AND GRADE OF
 SANITARY SEWERS
 TO BE CONSTRUCTED IN

TRACT No. 29015

PRIVATE CONTRACT NO. 7057

W.S. 39
 8 SHEETS, 6 PAGES

SCALE: VERT. 1" = 4'
 HORIZ. 1" = 40'
 AUGUST, 1964

PREPARED IN THE OFFICES OF
 5300 W. ENCINITAS BLVD.
 200 WASHINGTON BLVD., LOS ANGELES, CALIF. 90015
 BY: Fred J. Emms
 REG. C. E. NO. 11822

FOR LEGEND SEE PLAN NO. S-64

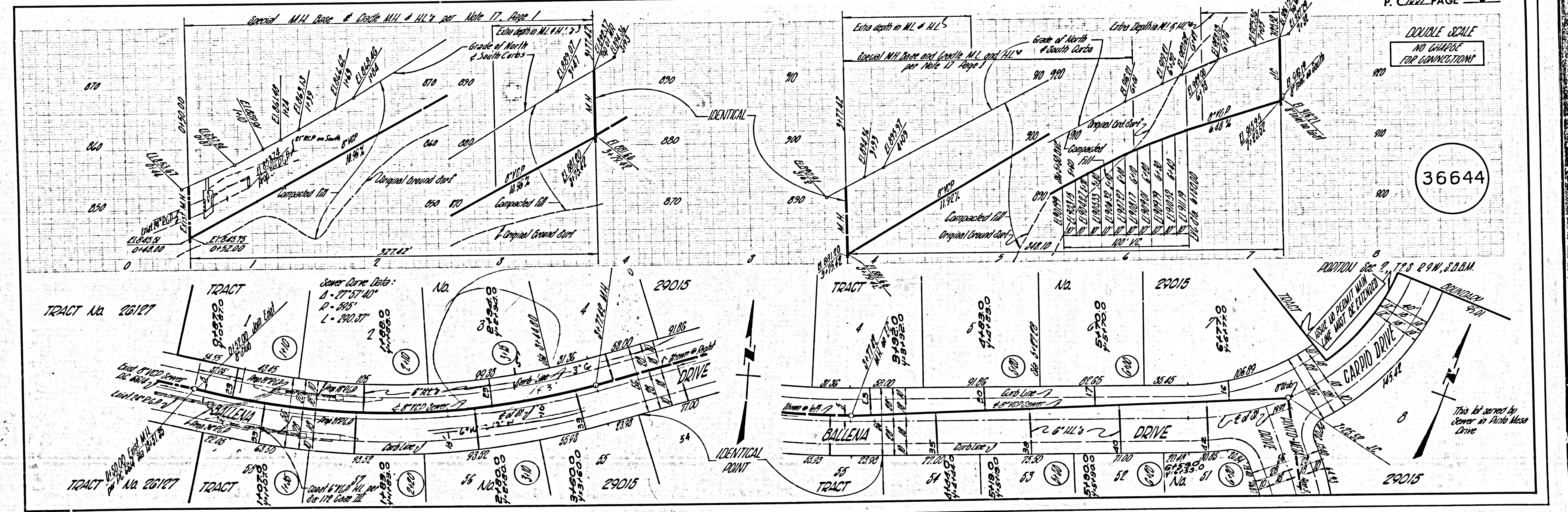
NOTES
 GRADES TO WHICH THIS IMPROVEMENT IS TO BE CONSTRUCTED ARE SHOWN ON PLANS AND PROFILES. GRADE POINTS FOR TOP OF CURBS, CENTER LINE OF STREETS, OR CENTER LINE OF ALLEYS ARE SHOWN BY CIRCLES ON HOUSES. AT ALL POINTS BETWEEN DESIGNATED POINTS THE GRADE SHALL BE ESTABLISHED SO AS TO CONFORM TO A STRAIGHT LINE DRAWN BETWEEN SAID DESIGNATED POINTS. ELEVATIONS ARE IN FEET ABOVE U.S.C. & G.S. MEAN DATUM OF 1929.

THE DRAWINGS AND DATA HEREON ARE HEREBY MADE A PART OF THE SPECIFICATIONS FOR THE WORK TO BE CONSTRUCTED ACCORDING TO STANDARD SPECIFICATIONS DATED MAY 20, 1962, ON FILE IN THE OFFICE OF THE COUNTY ENGINEER AND SHALL BE PROSECUTED ONLY IN THE PRESENCE OF THE COUNTY ENGINEER.

APPROVED BY: [Signature] ASSISTANT SANITATION ENGINEER
 APPROVED BY: [Signature] OFFICE ENGINEER
 SUBMITTED BY: [Signature] SANITATION ENGINEER
 CHECKED BY: [Signature] 12-15-64
 REG. C. E. NO. 11636

36643

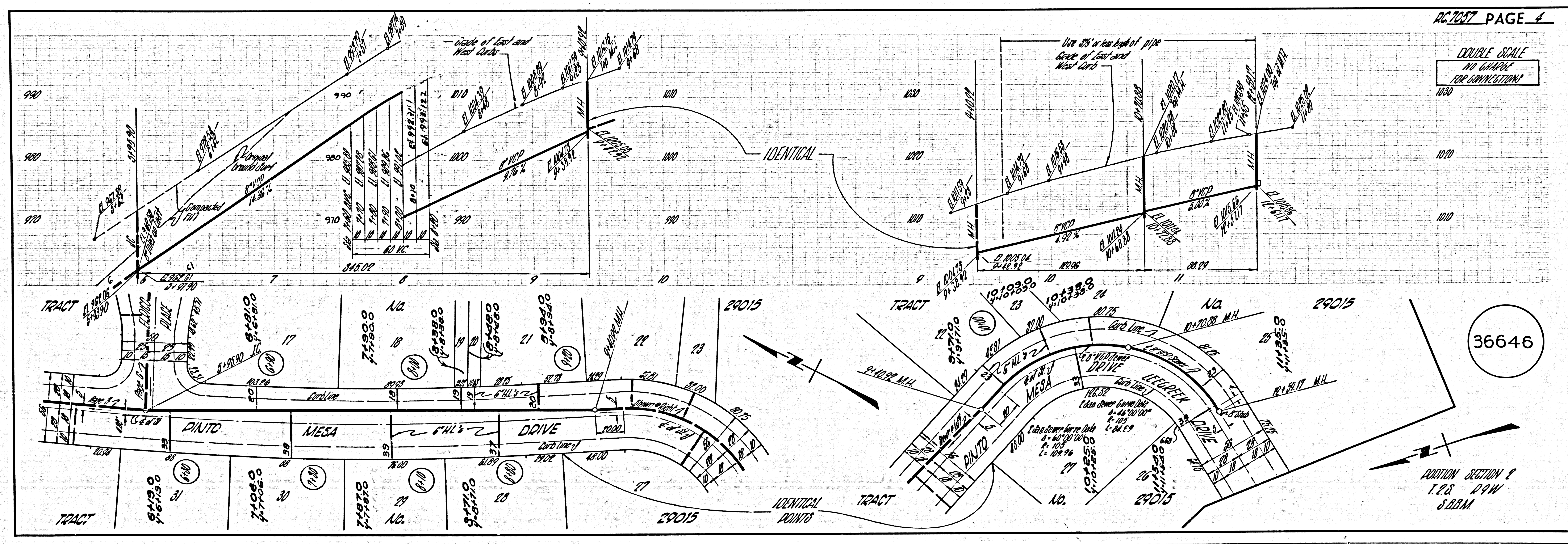
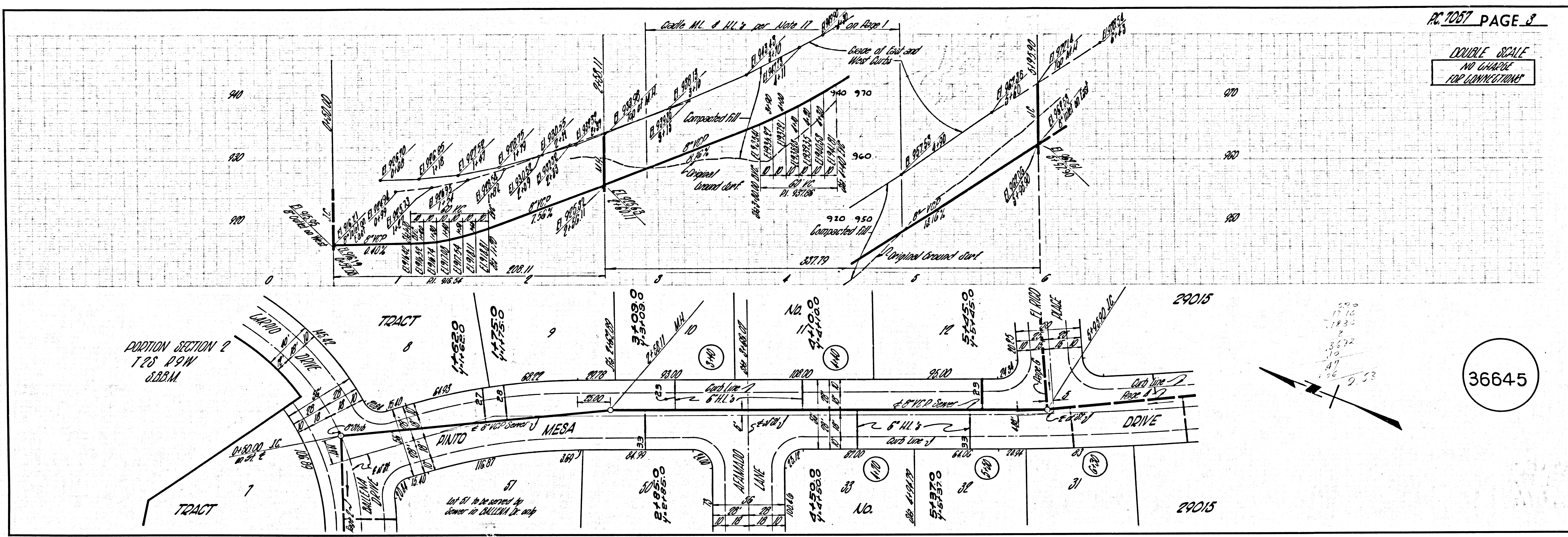
J. N. [Signature]



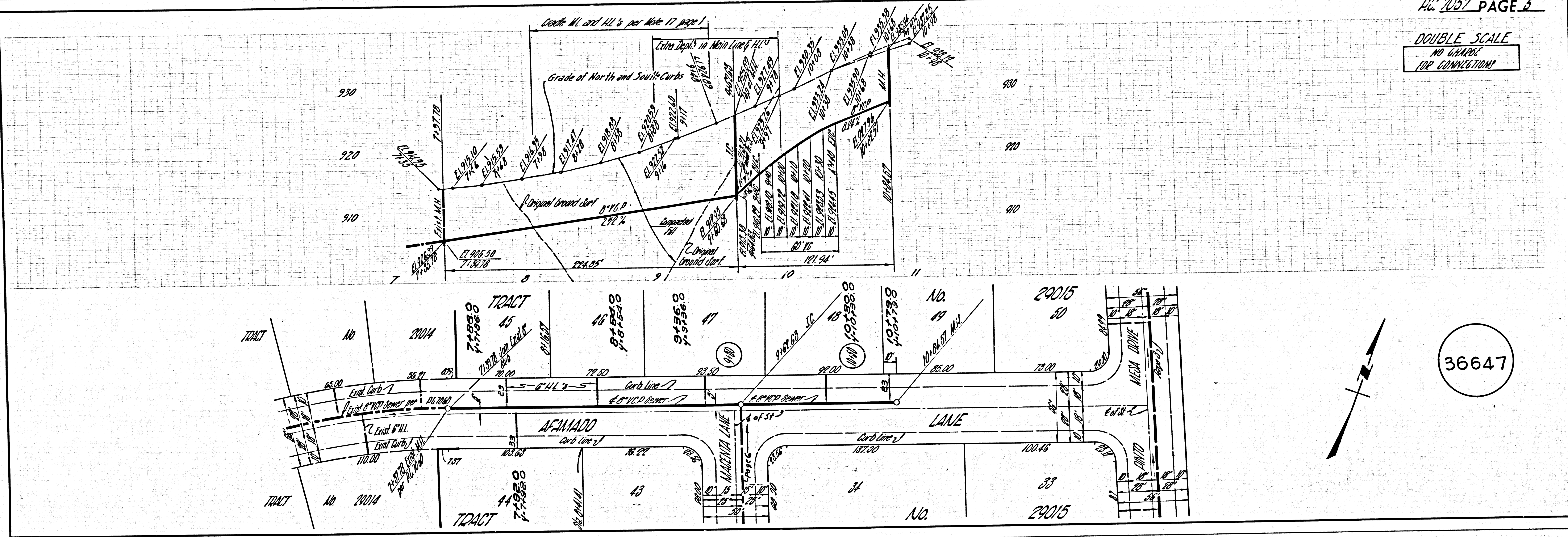
P. C. 7057 PAGE 2

DOUBLE SCALE
 NO CHARGE
 FOR CONNECTIONS

36644

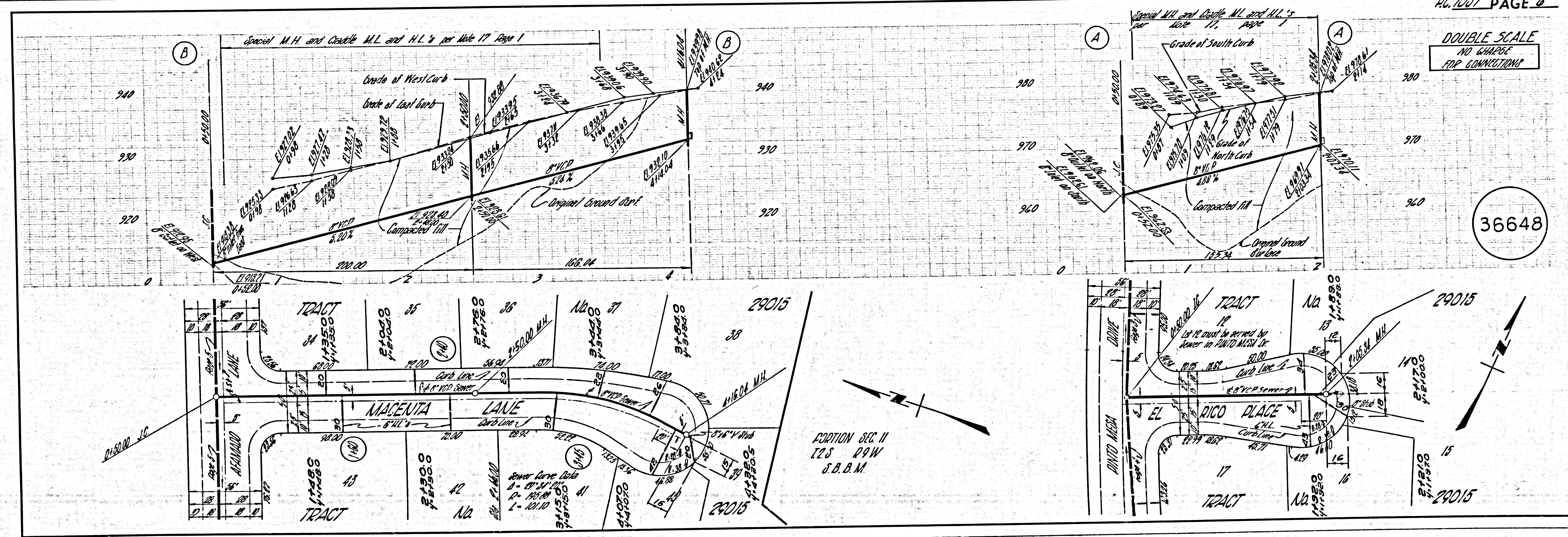


DOUBLE SCALE
NO CHARGE
FOR CONNECTIONS



36647

DOUBLE SCALE
NO CHARGE
FOR CONNECTIONS



36648

SECTION 22
T2S R9W
S.B.M.