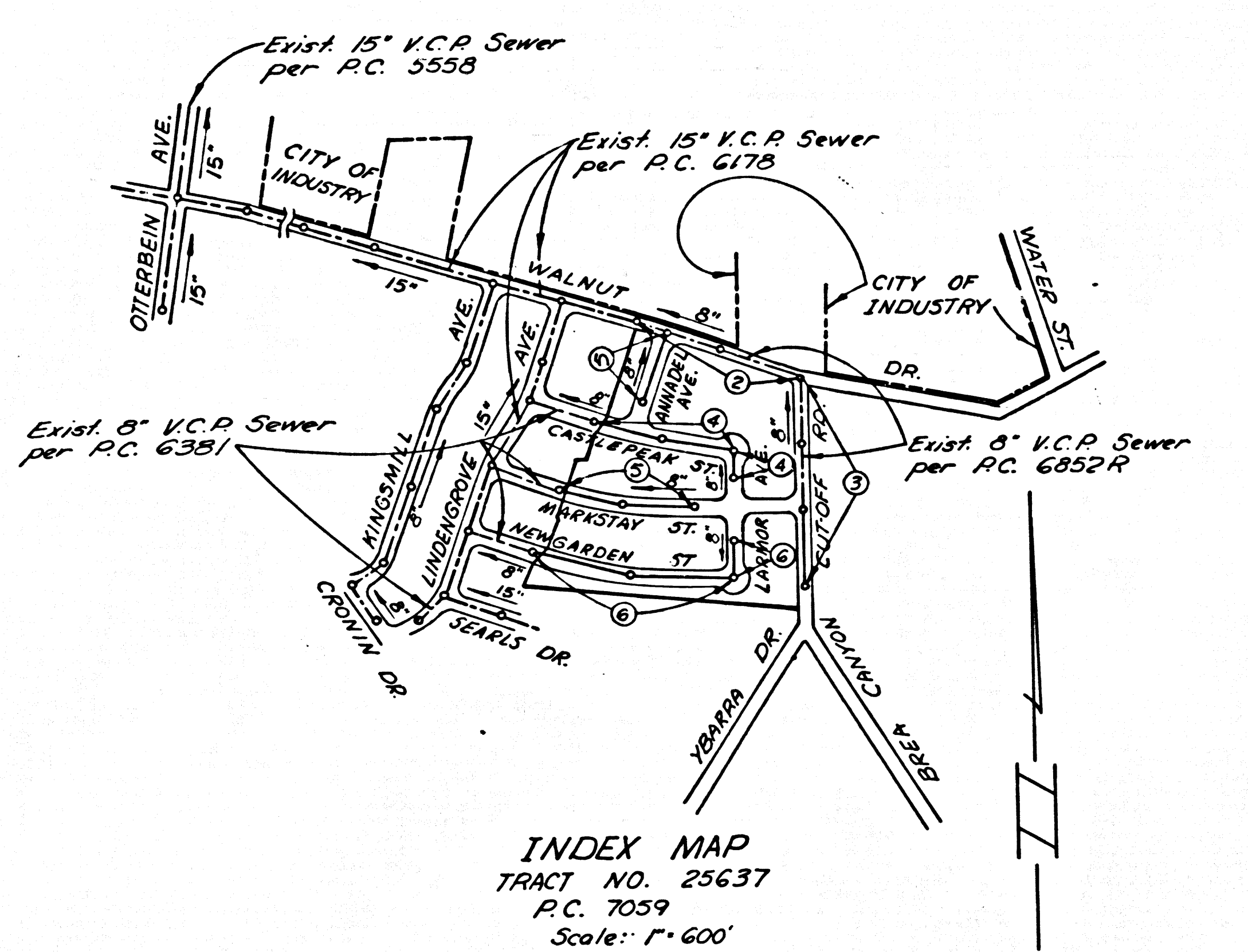


B.M. S.G. 1309 ELEV. 508.571
 1.17' in W'y end of conc. headwall
 1.8' S'y of Walnut Dr. 1.25'
 E'y of Water St. Prod.
 OTTERBEIN QUAD. 1955



INDEX MAP
 TRACT NO. 25637
 P.C. 7059
 Scale: 1" = 600'

THE CONTRACTOR SHALL OBTAIN THE WYE STATIONS PRIOR TO CONSTRUCTION OF HOUSE LATERALS CONNECTING TO R.C. 6852-R.

ISSUE NO HOUSE CONNECTION PERMITS UNTIL R.C. 6852-R HAS BEEN ACCEPTED.

LA PUENTE BLDG. DIST. NO. 2

- NOTE:
1. PROVIDE STAKES ON THE PROPERTY LINE OR PROPERTY LINES PRODUCED AT RIGHT ANGLES TO THE SEWER LINE AT THE CENTER LINE OF EACH MANHOLE.
 2. NO REPRESENTATIVE OF THE COUNTY ENGINEER WILL SURVEY OR LAY OUT ANY PORTION OF THE WORK.
 3. THE PRIVATE ENGINEER SHALL FURNISH THE COUNTY ENGINEER WITH GRADE SHEETS AND STATIONING FOR ALL HOUSE LATERALS AND Y BRANCHES AND SHALL PROVIDE STAKES FOR THEM AT THEIR PROPER LOCATIONS WITH STATIONING PLAINLY MARKED. ALL HOUSE LATERALS SHALL BE CONSTRUCTED IN A STRAIGHT ALIGNMENT AT RIGHT ANGLES FROM THE MAIN LINE SEWER EXCEPT AS SHOWN ON THE PLANS. HOUSE LATERALS FROM CHIMNEYS AT ALL POINTS SHALL HAVE AN ANGLE OF LESS THAN 45° WITH THE MAIN LINE SEWER. ANY CHANGE IN ALIGNMENT SHALL BE REQUESTED BY WRITING BY THE PRIVATE ENGINEER.
 4. THE PRIVATE ENGINEER SHALL FURNISH THE HOUSE LATERAL DEPTH AT THE PROPERTY LINE BELOW THE TOP OF CURB ELEVATION FOR EACH HOUSE LATERAL ON THE GRADE SHEET.
 5. NO REVISIONS SHALL BE MADE IN THESE PLANS WITHOUT THE APPROVAL OF THE COUNTY ENGINEER.
 6. THE CONTRACTOR SHALL NOTIFY THE CONSTRUCTION DIVISION BY TELEPHONE, MADISON 9-4747, EXT. 8158, AT LEAST TWENTY-FOUR HOURS BEFORE STATING ANY WORK UNDER THIS CONTRACT.
 7. MANHOLES SHALL BE BRICK SEWER STRUCTURES PER S-304. PRECAST CONCRETE MANHOLES PER S-125 OR S-173 MAY BE USED AS AN ALTERNATE IN LOCATIONS APPROVED BY THE COUNTY ENGINEER.
 8. USE STANDARD MANHOLE FRAMES AND COVERS, S-117.
 9. USE EXTRA STRENGTH PIPE, ALL PIPE IS STANDARD DEPTH EXCEPT AS NOTED.
 10. USE MECHANICAL COMPRESSION JOINTS FOR ALL V.C.P. JOINTS PER SPEC., SECS. 36, 48 & 49.
 11. WHERE EVER GROUND WATER IS ENCOUNTERED DURING THE CONSTRUCTION OF THE SEWERS, THE V.C.P. JOINTS SHALL BE OF JOINT COMPOUND PER SPEC., SECS. 33 & 46, OR MECHANICAL COMPRESSION JOINTS PER SPEC., SEC. 34.
 12. IF A POWER POLE IS WITHIN THREE FEET OF THE SEWER, THE SEWER SHALL BE ENCASED, PER S-173, CASE III, TWO FEET ON EITHER SIDE FROM THE POINT OF INTERFERENCE.
 13. IF DURING THE COURSE OF CONSTRUCTION IT IS DETERMINED THAT THERE IS LESS THAN FOUR FEET OF COVER OVER THE TOP OF A MAIN LINE OF HOUSE LATERAL V.C.P. SEWER WHICH IS NOT INDICATED ON THE PLANS, THE PIPE SHALL BE ENCASED PER S-173, CASE III, UNLESS OTHERWISE APPROVED BY THE COUNTY ENGINEER.
 14. HOUSE LATERALS TO BE CONSTRUCTED WITH INVERTS AT PROPERTY LINE... 8" FEET BELOW CURB GRADE
 15. REINFORCE ALL TRENCHES WITHIN PAVED AREAS TO MEET L.A. COUNTY ROAD DEPT. OR CALIFORNIA STATE HIGHWAY REQUIREMENTS IN ACCORDANCE WITH PERMITS.
 16. FOR ALLOWABLE LEAKAGE TEST USE FORMULA NO. 1, SPEC., SEC. 54
 17. ALL STATE AND LOCAL TRENCH SAFETY ORDERS WILL BE RIGIDLY ENFORCED.

NO CONNECTIONS FOR THE DISPOSAL OF INDUSTRIAL WASTES SHALL BE MADE TO SEWERS SHOWN ON THESE DRAWINGS WITHOUT WRITTEN PERMISSION FROM THE CHIEF ENGINEER AND GENERAL MANAGER OF THE COUNTY SANITATION DISTRICTS.

COLLECT CHARGES AS INDICATED
 Gerald H. Kinney 8-27-64

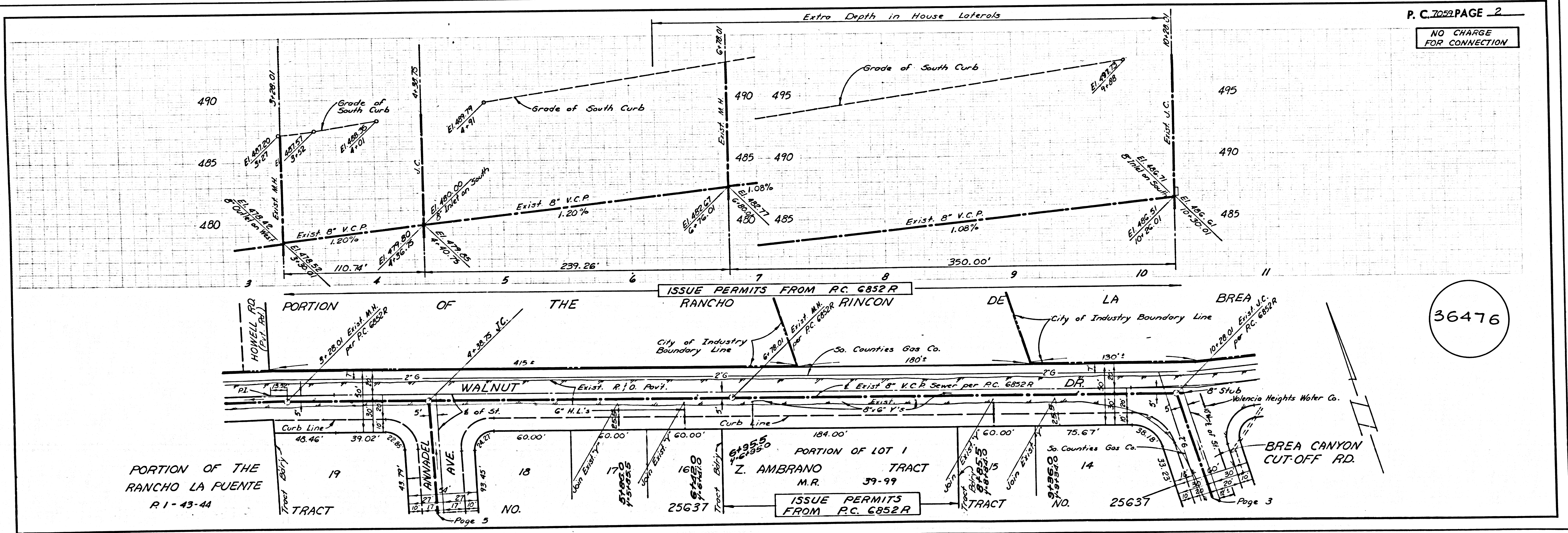
REVISION:
 Lowered Curb grades on Pages 6A and 6B.
 Approved: *Edwin W. Knight* Date: 1-11-65
 San Dimas Regional Engineer

PROFILE ALIGNMENT AND GRADE OF
SANITARY SEWERS P.C. 7059
 TO BE CONSTRUCTED IN
 TRACT NO. 25637 PAGE 1

PRIVATE CONTRACT NO. 7059
 W.S. 38
 3 SHEETS, 6 PAGES
 SCALE: VERT. 1" = 4' HORIZ. 1" = 40' July 1964 36475
 PREPARED IN THE OFFICES OF
ADAMS & ELLS
 CIVIL ENGINEERS
 REG. C. E. NO. 10880
 FOR LEGEND SEE PLAN NO. S-64

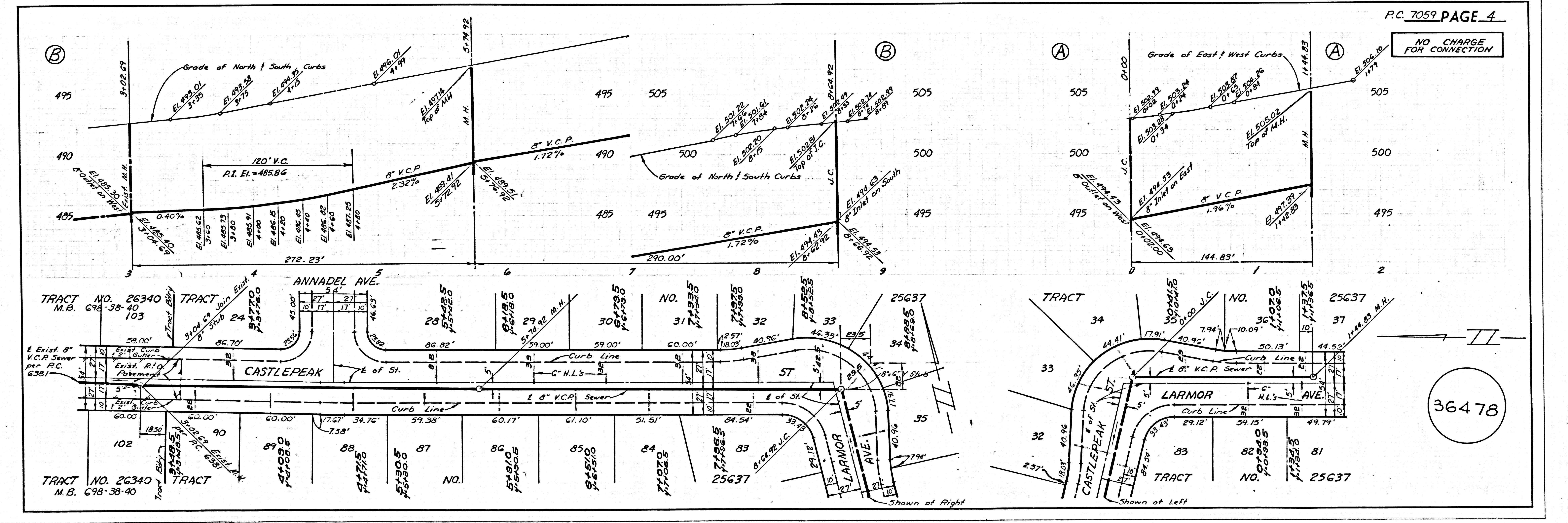
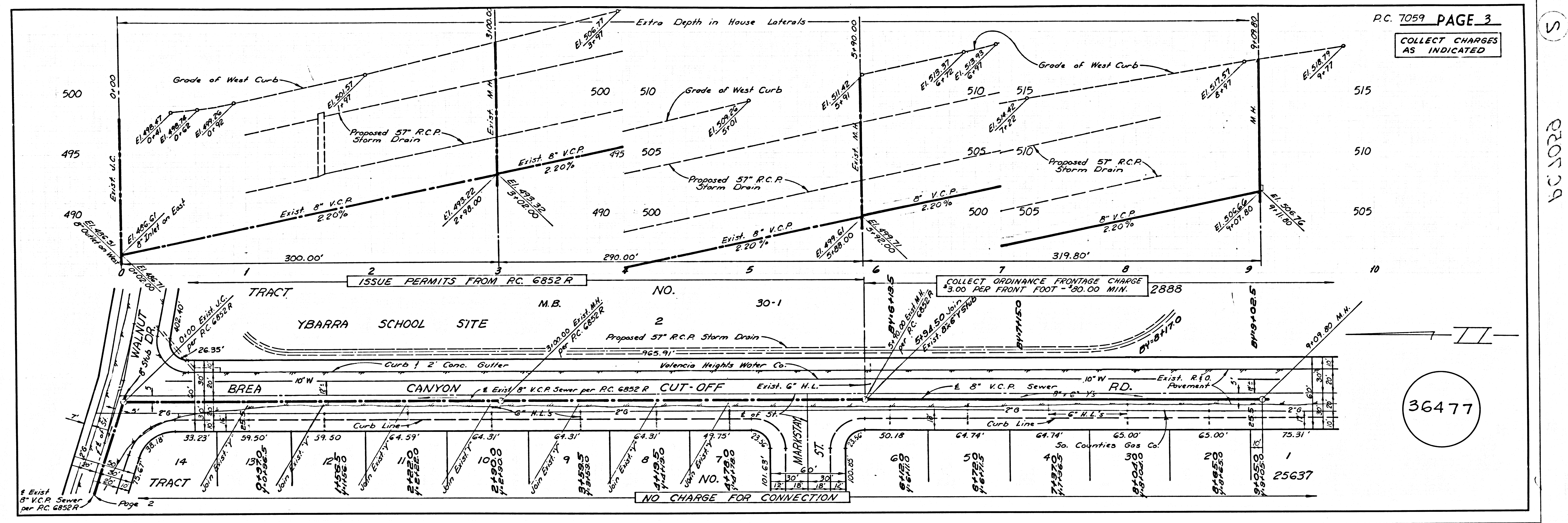
NOTE:
 GRADES TO WHICH THIS IMPROVEMENT IS TO BE CONSTRUCTED ARE SHOWN ON PLANS AND PROFILES. CREST POINTS FOR TOP OF CURBS, CENTER LINE OF STREETS, OR CENTER LINE OF ALLEYS ARE SHOWN BY CIRCLES ON PROFILES. AT ALL POINTS BETWEEN DESIGNATED POINTS THE GRADE SHALL BE ESTABLISHED SO AS TO CONFORM TO A STRAIGHT LINE DRAWN BETWEEN SAID DESIGNATED POINTS. ELEVATIONS ARE IN FEET ABOVE U.S.C. & G.S. MEAN SEA LEVEL DATUM OF 1929. THE DRAWING AND THE DATA HEREON ARE HEREBY MADE A PART OF THE SPECIFICATIONS. WORK SHALL BE CONSTRUCTED ACCORDING TO STANDARD SPECIFICATIONS DATED MAY 23, 1962, ON FILE IN THE OFFICE OF THE COUNTY ENGINEER AND SHALL BE PROSECUTED ONLY IN THE PRESENCE OF THE COUNTY ENGINEER. BEFORE WORK CAN BE STARTED, THE CONTRACTOR MUST OBTAIN A PERMIT TO EXCAVATE IN COUNTY STREETS FROM THE L.A. COUNTY ROAD DEPT., DISTRICT OFFICE NO. 1, SAN DIMAS, CALIF. AND PAY A FEE TO THE COUNTY ENGINEER, ROOM 309, COUNTY ENGINEER'S BUILDING, 100 WEST SECOND STREET OR TO THE SAN DIMAS REGIONAL OFFICE, 100 WEST SECOND STREET OR TO THE COUNTY ENGINEER, REGIONAL OFFICE, 100 WEST SECOND STREET, LOS ANGELES, CALIFORNIA. APPROVAL OF THIS PLAN BY THE COUNTY OF LOS ANGELES DOES NOT CONSTITUTE A REPRESENTATION AS TO THE ACCURACY OF THE LOCATION OF OR THE EXISTENCE OR NON-EXISTENCE OF ANY UNDERGROUND UTILITY PIPE, OR STRUCTURE WITHIN THE LIMITS OF THE PROJECT. THIS NOTE APPLIES TO ALL PAGES. IF WORK IS TO BE DONE IN A STATE HIGHWAY, A PERMIT MUST BE OBTAINED FROM THE STATE OF CALIFORNIA, DIVISION OF HIGHWAYS, 180 SOUTH SPRING STREET, LOS ANGELES, CALIFORNIA.

COUNTY OF LOS ANGELES, CALIFORNIA
 JOHN A. LAMBIE, COUNTY ENGINEER J. D. PARKHURST, CHIEF ENGINEER
 CO. SAN. DIST. 16, 21
 APPROVED BY: *Richard E. Vetter* ASSISTANT SANITATION ENGINEER APPROVED BY: *[Signature]* OFFICE ENGINEER
 SUBMITTED BY: *Edwin W. Knight* SAN DIMAS REGIONAL ENGINEER
 CHECKED BY: *[Signature]* 8-11-64 REG. C.E. NO. 11639
 J.N. 0363.65



P. C. 7059 PAGE 2
 NO CHARGE FOR CONNECTION

36476



5
BC1029

