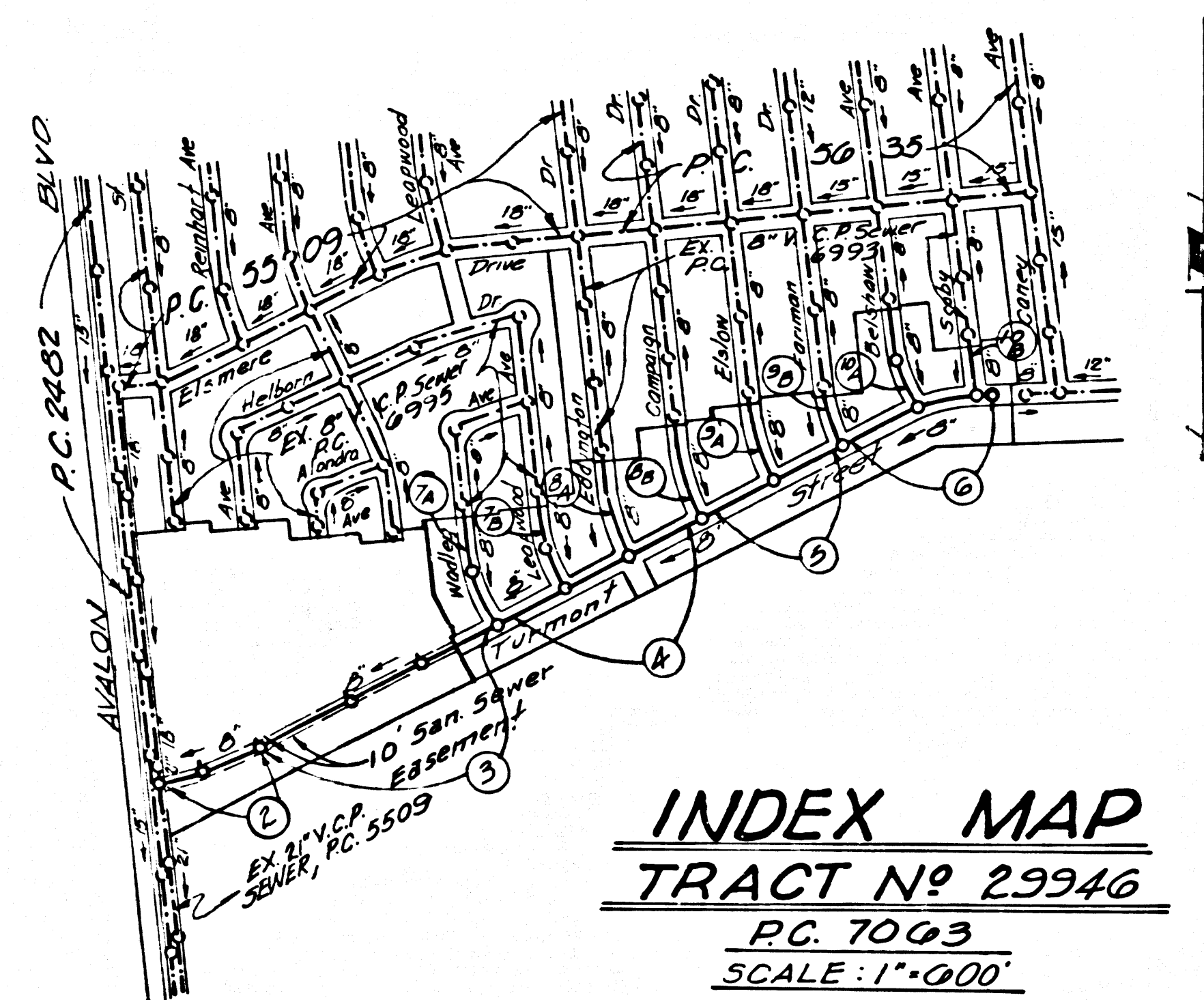


B.M. 5Y 223 ELEV. 11.607  
 Spike in lead East Edge Pymt.  
 Avalon Blvd. 172 West Center  
 Tower # 12, 9th Tower 30 of  
 Victoria St.  
 GARDENA QUAD. 19 60.



**NOTE BY THE PRIVATE ENGINEER**  
 The existence and approximate location of underground utilities or structures shown on this plan were determined by a search of the available public records. To the best of our knowledge there are no existing underground utilities or structures except as shown on this plan.  
 The contractor is required to take due precautionary measures to protect the utilities or structures shown and any other utilities or structures at the site. It shall be the contractor's responsibility to notify the owners of the utilities or structures concerned before starting work.

**REVISION**  
 Revised Sewer Alignment & Manhole Stations, Added one Manhole, Between Sta. 0+99.93 & Sta. 13+02.31, Page 2 of 3.  
 APPROVED: *Edward J. Valadez* DATE: 9-19-68  
 OFFICE OF CHIEF ENGINEER

**LENNOX BLDG. DIST. NO. 7**

- NOTES:**
1. PROVIDE STAKES ON THE PROPERTY LINE OR PROPERTY LINES PRODUCED AT RIGHT ANGLES TO THE SEWER LINE AT THE CENTER LINE OF EACH MANHOLE.
  2. NO REPRESENTATIVE OF THE COUNTY ENGINEER WILL SURVEY OR LAY OUT ANY PORTION OF THE WORK.
  3. THE PRIVATE ENGINEER SHALL FURNISH THE COUNTY ENGINEER WITH GRADE SHEETS AND STATIONING FOR ALL HOUSE LATERALS AND Y BRANCHES AND SHALL PROVIDE STAKES FOR THEM AT THEIR PROPER LOCATIONS WITH STATIONING PLAINLY MARKED. ALL HOUSE LATERALS SHALL BE CONSTRUCTED IN A STRAIGHT ALIGNMENT AT RIGHT ANGLES FROM THE MAIN LINE SEWER EXCEPT AS SHOWN ON THE PLANS. HOUSE LATERALS FROM CHIMNEYS SHALL NOT HAVE AN ANGLE OF LESS THAN 45° WITH THE MAIN LINE SEWER. ANY CHANGE IN ALIGNMENT SHALL BE REQUESTED IN WRITING BY THE PRIVATE ENGINEER.
  4. THE PRIVATE ENGINEER SHALL FURNISH THE HOUSE LATERAL DEPTH AT THE PROPERTY LINE ABOVE THE TOP OF CURB ELEVATION FOR EACH HOUSE LATERAL ON THE GRADE SHEET.
  5. NO REVISIONS SHALL BE MADE IN THESE PLANS WITHOUT THE APPROVAL OF THE COUNTY ENGINEER.
  6. THE CONTRACTOR SHALL NOTIFY THE CONSTRUCTION DIVISION BY TELEPHONE, MADISON 9-4747, EXT. 81531, AT LEAST TWENTY-FOUR HOURS BEFORE STARTING ANY WORK UNDER THIS CONTRACT.
  7. MANHOLES SHALL BE BRICK SEWER STRUCTURES PER S-2-104. PRECAST CONCRETE MANHOLES PER S-2-133 OR S-2-173 MAY BE USED AS AN ALTERNATE IN LOCATIONS APPROVED BY THE COUNTY ENGINEER.
  8. USE STANDARD MANHOLE FRAMES AND COVERS, S-2-117, EXCEPT AS NOTED.
  9. MANHOLE TOPS IN UNIMPROVED RIGHTS-OF-WAY TO BE SIX INCHES ABOVE FINISHED GRADE.
  10. USE EXTRA STRENGTH PIPE, ALL PIPE IS STANDARD DEPTH EXCEPT AS NOTED.
  11. USE CHAMPT MORTAR OR MECHANICAL COMPRESSION JOINTS FOR ALL V.C.P. JOINTS PER SPECS., SECS. 34, 48 & 49.
  12. WHERE EVER GROUND WATER IS ENCOUNTERED DURING THE CONSTRUCTION OF THE SEWER, THE V.C.P. JOINTS SHALL BE JOINT COMPOUND PER SPECS., SECS. 33 & 48, OR MECHANICAL COMPRESSION JOINTS PER SPECS., SEC. 34.
  13. IF A POWER POLE IS WITHIN THREE FEET OF THE SEWER, THE SEWER SHALL BE ENCASED, PER S-2-172, CASE III, TWO FEET ON EITHER SIDE FROM THE POINT OF INTERFERENCE.
  14. IF DURING THE COURSE OF CONSTRUCTION IT IS DETERMINED THAT THERE IS LESS THAN FOUR FEET OF COVER OVER THE TOP OF A MAIN LINE OR HOUSE LATERAL V.C.P. SEWER WHICH IS NOT INDICATED ON THE PLANS, THE PIPE SHALL BE ENCASED PER S-2-172, CASE III, UNLESS OTHERWISE APPROVED BY THE COUNTY ENGINEER.
  15. HOUSE LATERALS TO BE CONSTRUCTED WITH WHITES AT PROPERTY LINE... 6" FEET BELOW CURB GRADE EXCEPT AS NOTED.
  16. SURFACE ALL TRENCHES WITHIN PAVED AREAS TO MEET L.A. COUNTY ROAD DEPT. OR CALIFORNIA STATE HIGHWAY REQUIREMENTS IN ACCORDANCE WITH PERMITS.
  17. FOR ALLOWABLE LEAKAGE TEST USE FORMULA NO. 2..... SPECS., SEC. 54.
  18. ALL STATE AND LOCAL TRENCH SAFETY ORDERS WILL BE RIGIDLY ENFORCED.
  19. CONSTRUCTION IN FILLED AREAS  
 (a) An acceptable Certification of Compaction test results shall be submitted to the Construction Division. Compaction tests are to be made in accordance with ASTM Standard Method of test D-698-42-T.  
 (b) No construction is permitted in fill areas where the relative density of compaction is less than 80%.  
 (c) If the relative density of compaction is less than 90%, all main line & house laterals shall be cradled per S-2-106 or have a special base course per S-2-179, Case III. Special manhole bases per S-2-123 are required.  
 (d) If the relative density of compaction is 90% or greater, the special provisions in (C) are not required.

PROFILE ALIGNMENT AND GRADE OF **P.C. 7003**  
**SANITARY SEWERS** PAGE 1  
 TO BE CONSTRUCTED IN

**TRACT No 29946**  
**PRIVATE CONTRACT NO. 7003**

W.S. 26  
 5 SHEETS, 10 PAGES  
 SCALE: VERT. 1"=4'  
 HORIZ. 1"=40'  
 JULY 1, 1964

PREPARED IN THE OFFICES OF  
**KEMMERER ENGR. CO. INC.**  
 145 NO PAINTER AVE WHITTIER, CALIF.  
 BY *Robert R. Flores*  
 REG. C. E. NO. 11349

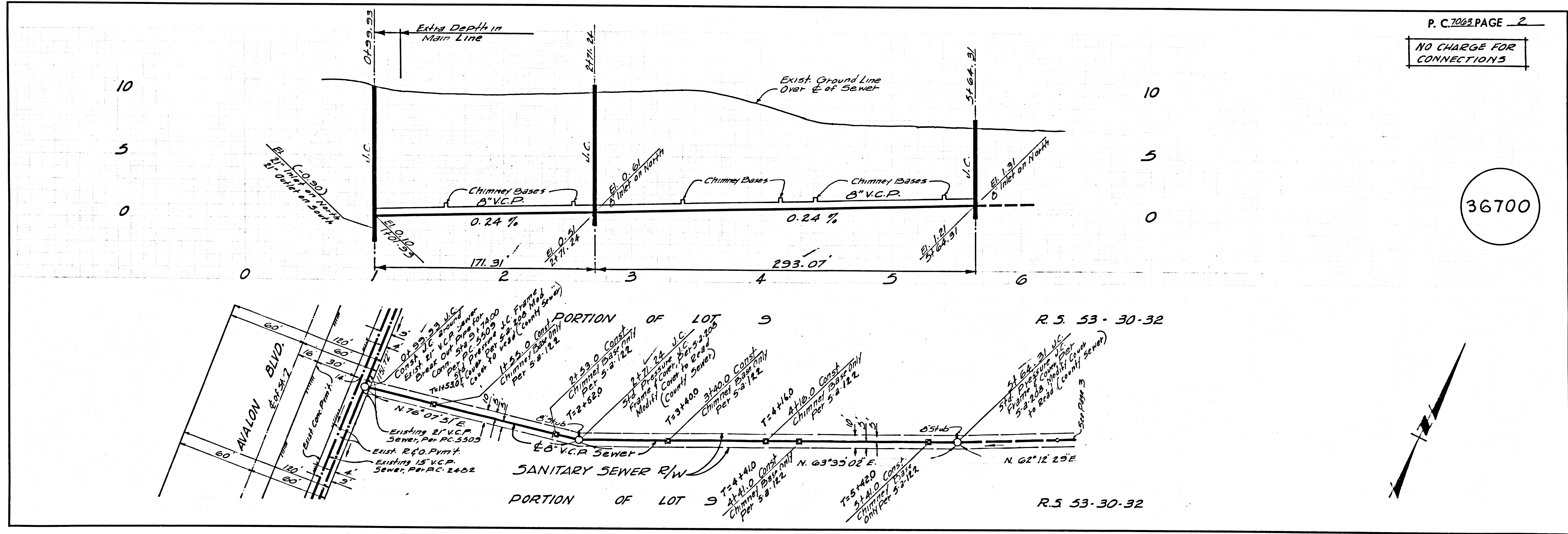
FOR LEGEND SEE PLAN NO. S-2-64

**NOTE:**  
 GRADES TO WHICH THIS IMPROVEMENT IS TO BE CONSTRUCTED ARE SHOWN ON PLANS AND PROFILES. GRADE POINTS FOR TOP OF CURBS, CENTER LINE OF STREETS, OR CENTER LINE OF ALLEYS ARE SHOWN BY CIRCLES ON PROFILES. AT ALL POINTS BETWEEN DESIGNATED POINTS THE GRADE SHALL BE ESTABLISHED SO AS TO CONFORM TO A STRAIGHT LINE DRAWN BETWEEN SAID DESIGNATED POINTS. ELEVATIONS ARE IN FEET ABOVE U.S.C. & G.S. SEA LEVEL DATUM OF 1929.  
 THIS DRAWING AND THE DATA HEREON ARE HEREBY MADE A PART OF THE SPECIFICATIONS.  
 WORK SHALL BE CONSTRUCTED ACCORDING TO STANDARD SPECIFICATIONS DATED 12-25-29, ON FILE IN THE OFFICE OF THE COUNTY ENGINEER AND SHALL BE PROTECTED ONLY IN THE PRESENCE OF THE COUNTY ENGINEER.  
 BEFORE WORK CAN BE STARTED, THE CONTRACTOR MUST OBTAIN A PERMIT TO EXCAVATE IN COUNTY STREETS FROM THE L.A. COUNTY ROAD DEPT., DISTRICT OFFICE OF *ALAM* AND PAY A FEE TO THE COUNTY ENGINEER, ROOM 300, COUNTY ENGINEERING BUILDING, 60 WEST SECOND STREET, DISTRICT OFFICE OF *ALAM* AND PAY A FEE TO THE COUNTY ENGINEER, ROOM 300, COUNTY ENGINEERING BUILDING, 60 WEST SECOND STREET, DISTRICT OFFICE OF *ALAM*. REGIONAL OFFICE, SUPPLEMENT TO COVER THE COST OF CONSTRUCTION INSPECTION AND RECORD PLANS.  
 APPROVAL OF THIS PLAN BY THE COUNTY OF LOS ANGELES DOES NOT CONSTITUTE A REPRESENTATION AS TO THE ACCURACY OF THE LOCATION OF OR THE EXISTENCE OR NON-EXISTENCE OF ANY UNDERGROUND UTILITY PIPE, OR STRUCTURE WITHIN THE LIMITS OF THIS PROJECT. THIS NOTE APPLIES TO ALL PAGES.  
 IF WORK IS TO BE DONE IN A STATE HIGHWAY, A PERMIT MUST BE OBTAINED FROM THE STATE OF CALIFORNIA, DIVISION OF HIGHWAYS, 120 SOUTH SPRING STREET, LOS ANGELES, CALIFORNIA.

COUNTY OF LOS ANGELES, CALIFORNIA  
 JOHN A. LAMBIE, COUNTY ENGINEER  
 APPROVED BY: *John A. Lambie*  
 ASSISTANT SANITATION ENGINEER  
 SUBMITTED BY: *Robert R. Flores*  
 REGIONAL ENGINEER  
 CHECKED BY: *Sto. Under 1346*  
 REG. C. E. NO. 3406  
 36699  
 J. N. 0303. 69

NO CONNECTIONS FOR THE DISPOSAL OF INDUSTRIAL WASTES SHALL BE MADE TO SEWERS SHOWN ON THESE DRAWINGS WITHOUT WRITTEN PERMISSION FROM THE CHIEF ENGINEER AND GENERAL MANAGER OF THE COUNTY SANITATION DISTRICTS.

**COLLECT CHARGES AS INDICATED**  
*Edmund J. Valadez*



P. C. 7003 PAGE 2  
 NO CHARGE FOR CONNECTIONS

36700

6007 29  
 24005 ON 10/24/61





