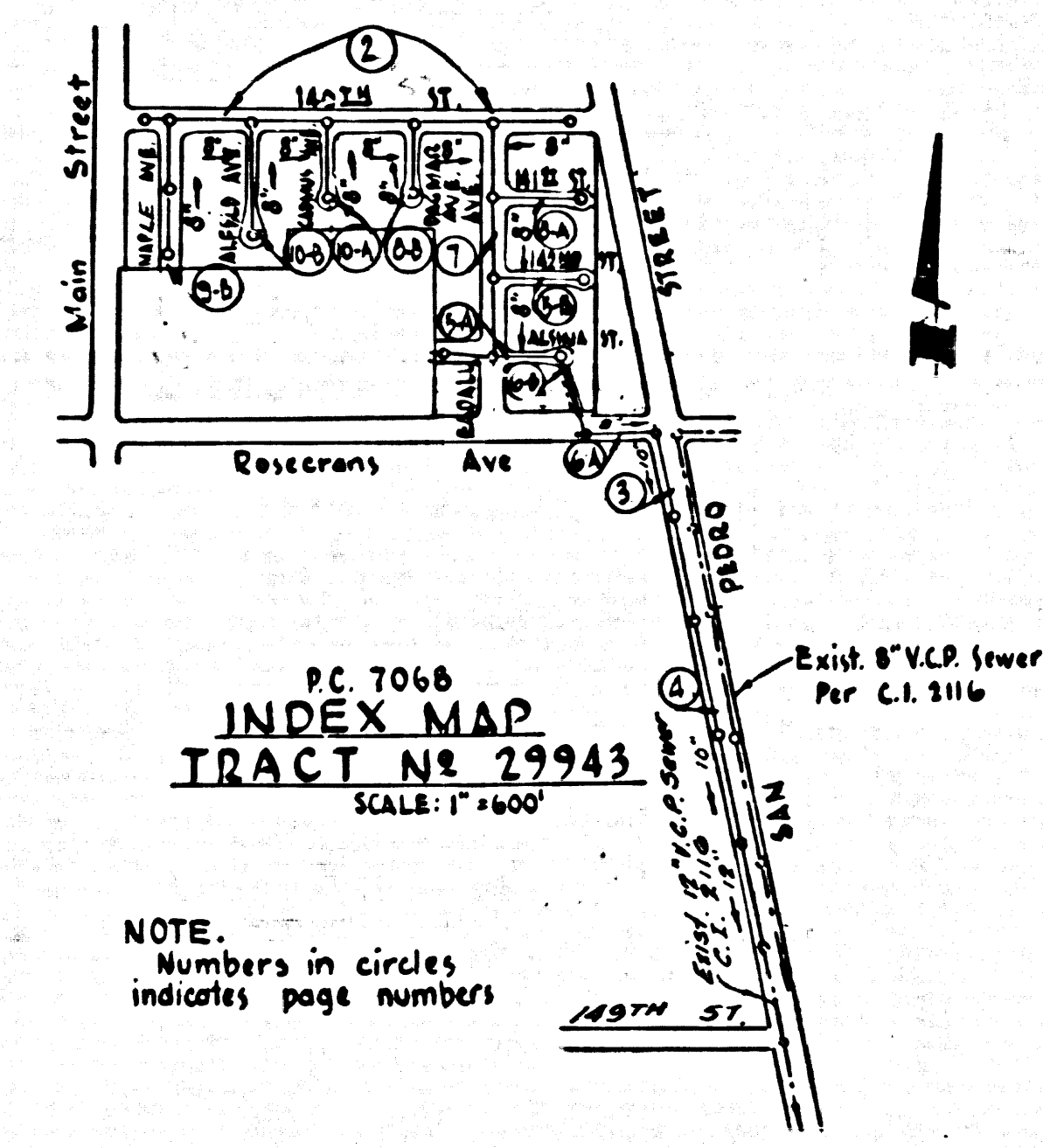


B.M. SY-5T15 ELEV. 114.428
 LEAD & WAIL IN S/EMD CONC
 HEADWALL OF CULVERT 37' x 41"
 @ 24' W. OF E. INT. ROSECRANS AVE.
 & MAIN ST.
 QUAD. 1955



PC 7068
 INDEX MAP
 TRACT NO 29943
 SCALE: 1"=400'

NOTE:
 Numbers in circles
 indicates page numbers

LENNOX BLDG. DIST. NO. 7

PROFILE ALIGNMENT AND GRADE OF
P.C. 7068
 SANITARY SEWERS PAGE 1
 TO BE CONSTRUCTED IN
TRACT NO 29943

PRIVATE CONTRACT NO. 7068

W.S. 26
 5 SHEETS, 10 PAGES
 SCALE: VERT. 1"=4' HORIZ. 1"=40' SEPT. 1, 1964 36663

PREPARED IN THE OFFICES OF
LANCO ENGINEERING

by *Clark M. Leonard*
 REG. C. E. NO. 12167

FOR LEGEND SEE PLAN NO. S-64

- NOTES:
1. PROFILE STAKES ON THE PROPERTY LINE OR PROPERTY LINES PRODUCED AT RIGHT ANGLES TO THE SEWER LINE AT THE CENTER LINE OF EACH MANHOLE.
 2. NO REPRESENTATIVE OF THE COUNTY ENGINEER WILL SURVEY OR LAY OUT ANY PORTION OF THE WORK.
 3. THE PRIVATE ENGINEER SHALL FURNISH THE COUNTY ENGINEER WITH GRADE SHEETS AND STATIONING FOR ALL HOUSE LATERALS AND 7 MANHOLES AND SHALL PROVIDE STAKES FOR THEM AT THEIR PROPER LOCATIONS WITH STATIONING PLAINLY MARKED. ALL HOUSE LATERALS SHALL BE CONSTRUCTED IN A STRAIGHT ALIGNMENT AT RIGHT ANGLES FROM THE MAIN LINE SEWER EXCEPT AS SHOWN ON THE PLANS. HOUSE LATERALS FROM CHIMNEYS SHALL NOT HAVE AN ANGLE OF LESS THAN 45° WITH THE MAIN LINE SEWER. ANY CHANGE IN ALIGNMENT SHALL BE REQUESTED IN WRITING BY THE PRIVATE ENGINEER.
 4. THE PRIVATE ENGINEER SHALL FURNISH THE HOUSE LATERAL DEPTH AT THE PROPERTY LINE BELOW THE TOP OF CURB ELEVATION FOR EACH HOUSE LATERAL ON THE GRADE SHEET.
 5. NO REVISIONS SHALL BE MADE IN THESE PLANS WITHOUT THE APPROVAL OF THE COUNTY ENGINEER.
 6. THE CONTRACTOR SHALL NOTIFY THE CONSTRUCTION DIVISION BY TELEPHONE, MADISON 9-4747, EXT. 8158, AT LEAST TWENTY-FOUR HOURS BEFORE STARTING ANY WORK UNDER THIS CONTRACT.
 7. MANHOLES SHALL BE BRICK SEWER STRUCTURES PER S-304. PRECAST CONCRETE MANHOLES PER S-133 OR S-173 MAY BE USED AS AN ALTERNATE IN LOCATIONS APPROVED BY THE COUNTY ENGINEER.
 8. USE STANDARD MANHOLE FRAMES AND COVERS, S-27, EXCEPT AS NOTED.
 9. MANHOLE TOPS IN UNIMPROVED RIGHTS-OF-WAY TO BE SIX INCHES ABOVE FINISHED GRADE.
 10. USE EXTRA STRENGTH PIPE. ALL PIPE IS STANDARD DEPTH EXCEPT AS NOTED.
 11. USE MECHANICAL COMPRESSION JOINTS FOR ALL V.C.P. JOINTS PER SPECS, SECS. 34 & 46, § 49.
 12. WHENEVER GROUND WATER IS ENCOUNTERED DURING THE CONSTRUCTION OF THE SEWERS, THE V.C.P. JOINTS SHALL BE OF JOINT COMPENSATING PER SPECS, SECS. 31 & 40, OR MECHANICAL COMPRESSION JOINTS PER SPECS, SEC. 36.
 13. IF A POWER POLE IS WITHIN THREE FEET OF THE SEWER, THE SEWER SHALL BE ENCASED, PER S-373, CASE 14, TWO FEET ON EACH SIDE FROM THE POINT OF INTERFERENCE.
 14. IF DURING THE COURSE OF CONSTRUCTION IT IS DETERMINED THAT THERE IS LESS THAN FOUR FEET OF COVER OVER THE TOP OF A MAIN LINE OR HOUSE LATERAL V.C.P. SEWER WHICH IS NOT INDICATED ON THE PLANS, THE PIPE SHALL BE ENCASED PER S-372, CASE 14, UNLESS OTHERWISE APPROVED BY THE COUNTY ENGINEER.
 15. HOUSE LATERALS TO BE CONSTRUCTED WITH INVERTS AT PROPERTY LINE... FEET BELOW CURB GRADE EXCEPT AS NOTED.
 16. RESURFACE ALL THINGS WITHIN PAVED AREAS TO MEET L.A. COUNTY ROAD DEPT. OR CALIFORNIA STATE HIGHWAY REQUIREMENTS IN ACCORDANCE WITH PERMITS.
 17. FOR ALLOWABLE LEAKAGE TEST USE FORMULA NO. 1, SPECS, SEC. 54.
 18. ALL LOCAL & STATE TRENCH SAFETY ORDERS WILL BE STRICTLY ENFORCED.

NO CONNECTIONS FOR THE DISPOSAL OF INDUSTRIAL WASTES SHALL BE MADE TO SEWERS SHOWN ON THESE DRAWINGS WITHOUT WRITTEN PERMISSION FROM THE CHIEF ENGINEER AND GENERAL MANAGER OF THE COUNTY SANITATION DISTRICTS.

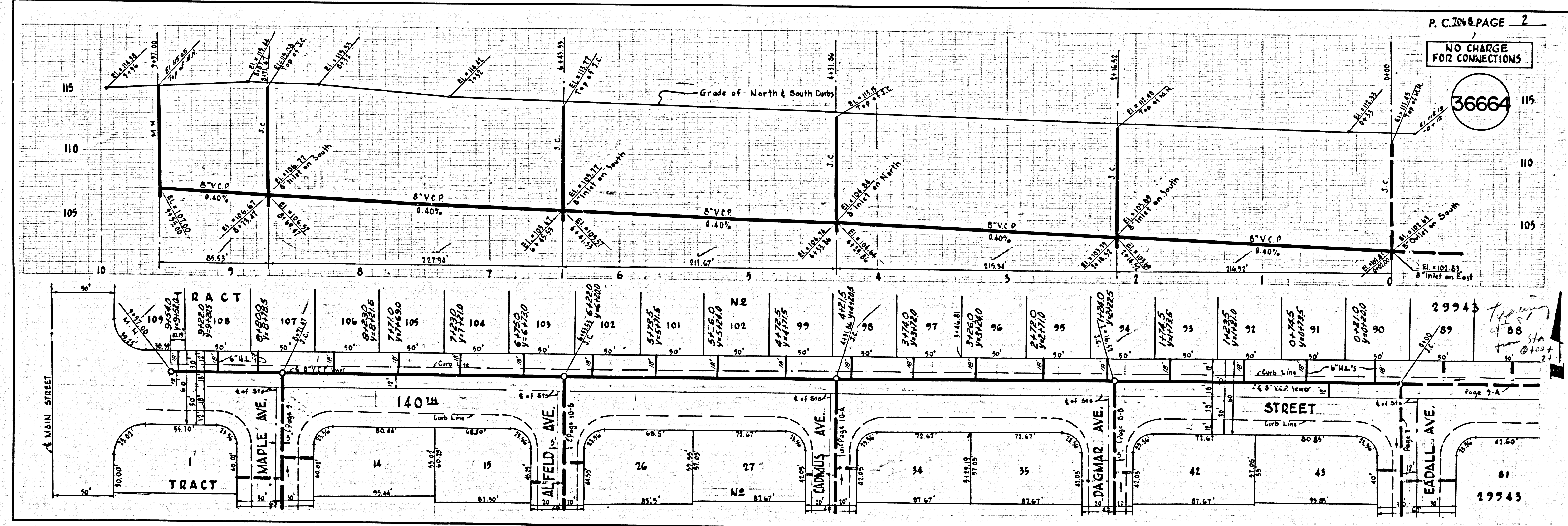
REVISIONS
 REVISED M.H. STATIONING ON ROSECRANS AVE, REVISED DIMENSIONS, ADDED UTILITY LINES ON ROSECRANS AVE. & SAN PEDRO ST. pages 4-6.
 APPROVED BY: *Richard J. VanDusen*
 R.C.E. 10653 10/26/64

COLLECT CHARGES AS INDICATED
Richard J. VanDusen

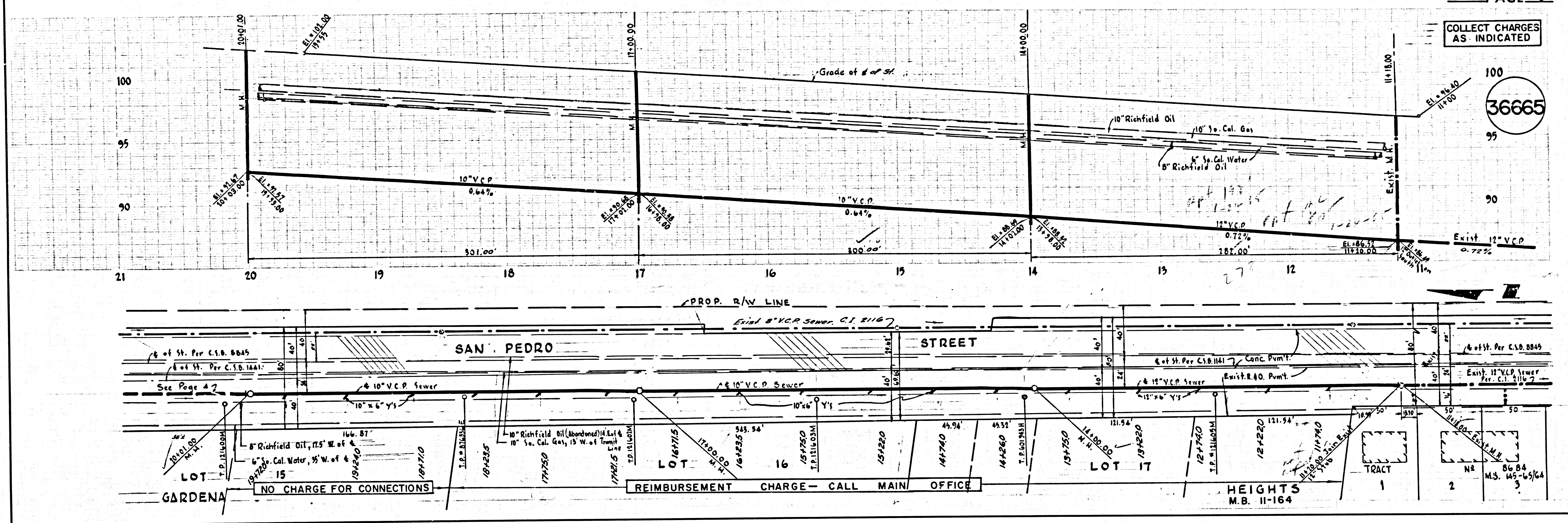
GRADES TO WHICH THIS IMPROVEMENT IS TO BE CONSTRUCTED ARE SHOWN ON PLANS AND PROFILES. GRADE POINTS FOR TOP OF CURBS, CENTER LINE OF STREETS, OR CENTER LINE OF ALLEYS ARE SHOWN BY CIRCLES ON PROFILES. AT ALL POINTS BETWEEN DESIGNATED ELEVATIONS ARE IN FEET ABOVE U.S.C. & G.S. MEAN SEA LEVEL DATUM OF 1929.
 THE DRAWINGS AND DATA HEREON ARE HEREBY MADE A PART OF THE SPECIFICATIONS.
 THE CONTRACTOR SHALL BE RESPONSIBLE FOR OBTAINING ALL NECESSARY PERMITS FROM THE L.A. COUNTY ROAD DEPT. DISTRICT OFFICE AND THE L.A. COUNTY ENGINEER, ROOM 300, COUNTY ENGINEERING BUILDING, CONSTRUCTION INSPECTION AND RECORDS DIVISION, 125 SOUTH SPRING STREET, LOS ANGELES, CALIFORNIA, IN ORDER TO EXCAVATE IN COUNTY STREETS FROM THE L.A. COUNTY ROAD DEPT. DISTRICT OFFICE AND THE L.A. COUNTY ENGINEER, ROOM 300, COUNTY ENGINEERING BUILDING, CONSTRUCTION INSPECTION AND RECORDS DIVISION, 125 SOUTH SPRING STREET, LOS ANGELES, CALIFORNIA.
 APPROVAL OF THIS PLAN BY THE COUNTY OF LOS ANGELES DOES NOT CONSTITUTE A REPRESENTATION AS TO THE ACCURACY OF THE LOCATION OR OF THE EXISTENCE OR NON-EXISTENCE OF ANY UNDERGROUND UTILITY PIPE, OR STRUCTURE WITHIN THE LIMITS OF THE PROJECT. THIS NOTE APPLIES TO ALL PAGES.
 IF WORK IS TO BE DONE IN A STATE HIGHWAY, A PERMIT MUST BE OBTAINED FROM THE STATE OF CALIFORNIA, DIVISION OF HIGHWAYS, 125 SOUTH SPRING STREET, LOS ANGELES, CALIFORNIA.

COUNTY OF LOS ANGELES, CALIFORNIA
 JOHN A. LAMBIE, COUNTY ENGINEER
 I. D. PARKHURST, CHIEF ENGINEER
 APPROVED BY: *Richard J. VanDusen* ASSISTANT SANITATION ENGINEER
 APPROVED BY: *William J. ...* OFFICE ENGINEER
 SUBMITTED BY: *Clark M. Leonard* REGIONAL ENGINEER
 CHECKED BY: *Richard J. VanDusen* REG. C.E. NO. 10653

J.N. 0363.73



P. C. 7068 PAGE 2
 NO CHARGE FOR CONNECTIONS
 36664

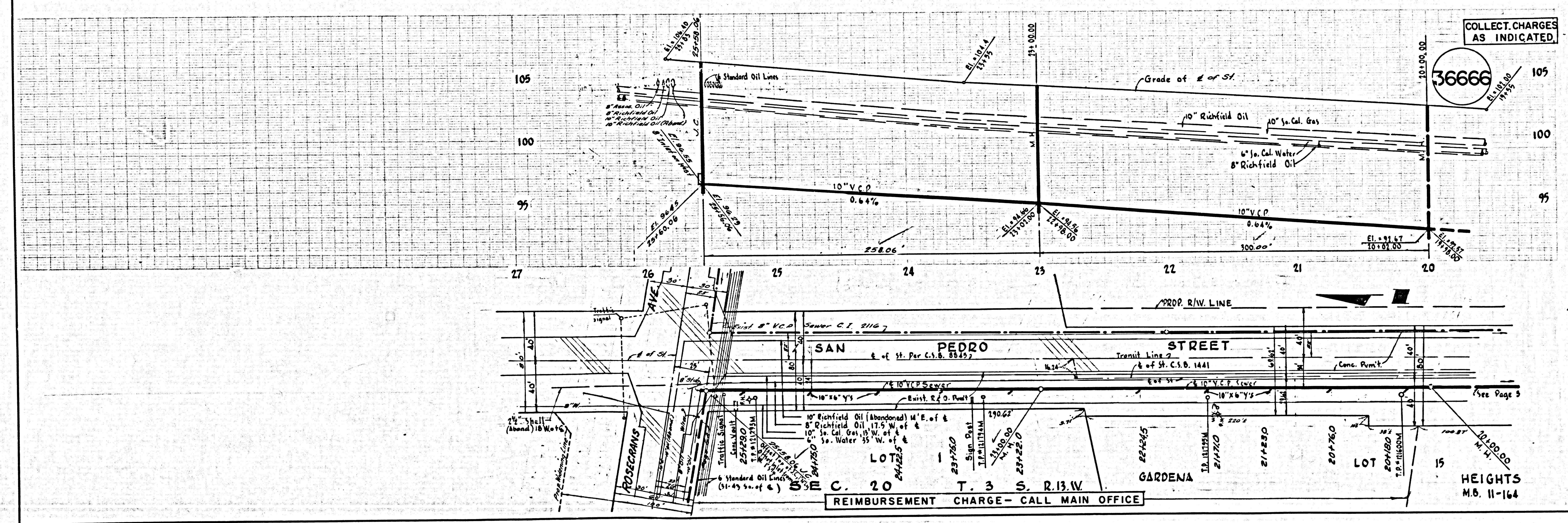


COLLECT CHARGES AS INDICATED

36665

REIMBURSEMENT CHARGE - CALL MAIN OFFICE

HEIGHTS M.B. 11-164

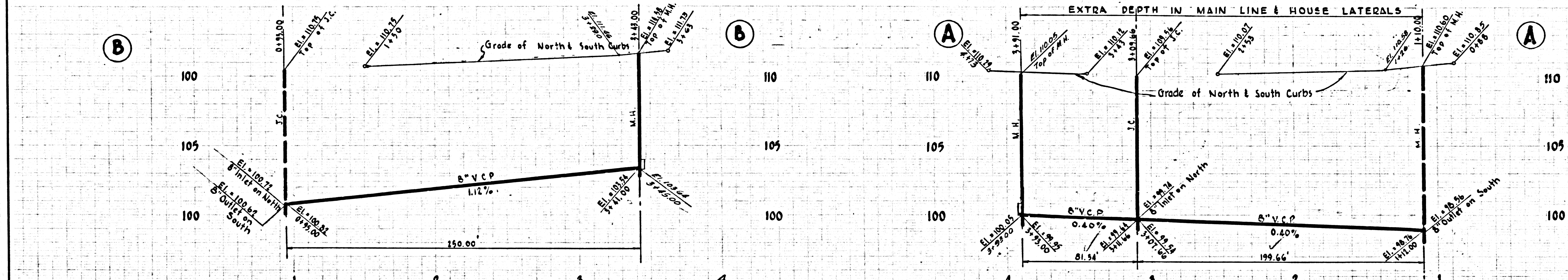


COLLECT CHARGES AS INDICATED

36666

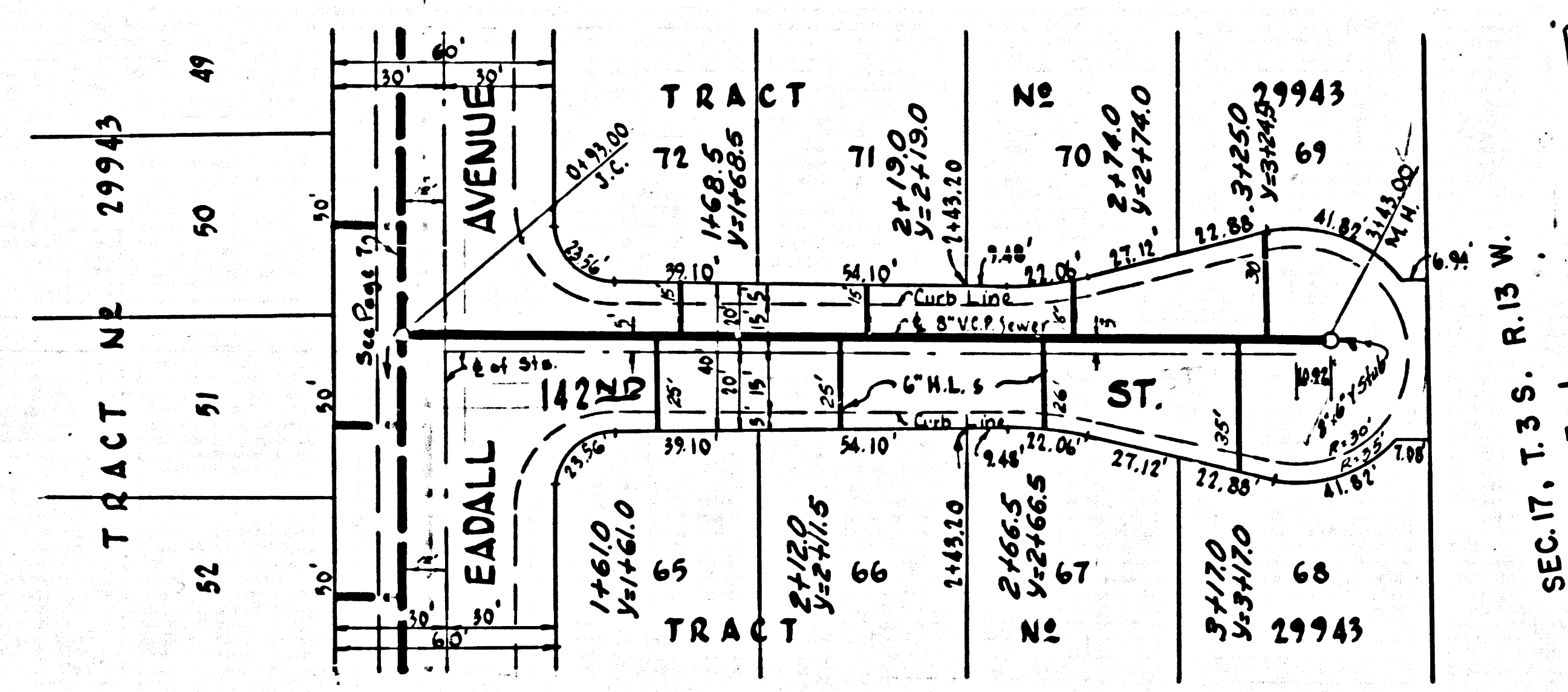
REIMBURSEMENT CHARGE - CALL MAIN OFFICE

HEIGHTS M.B. 11-164



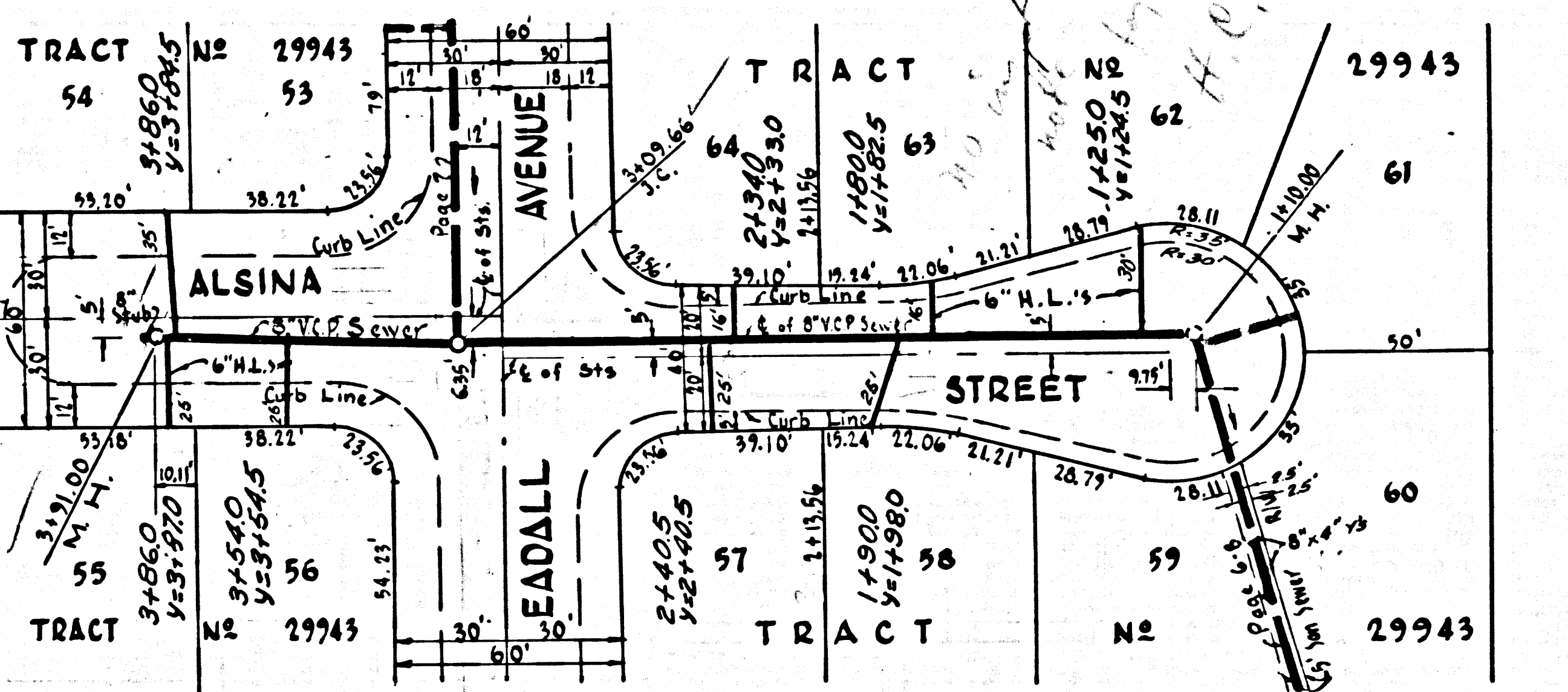
NO CHARGE FOR CONNECTIONS

36667



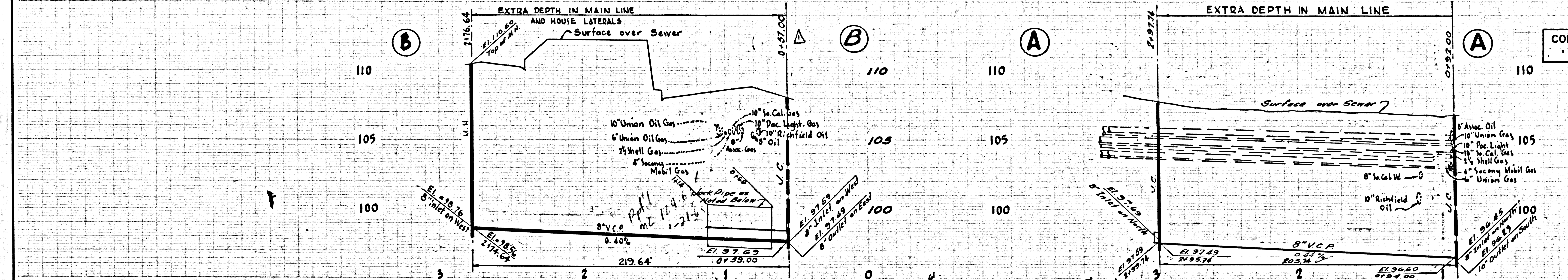
SEC. 17, T. 3 S., R. 13 W.
LOT 1

REIMBURSEMENT CHARGE-CALL MAIN OFFICE



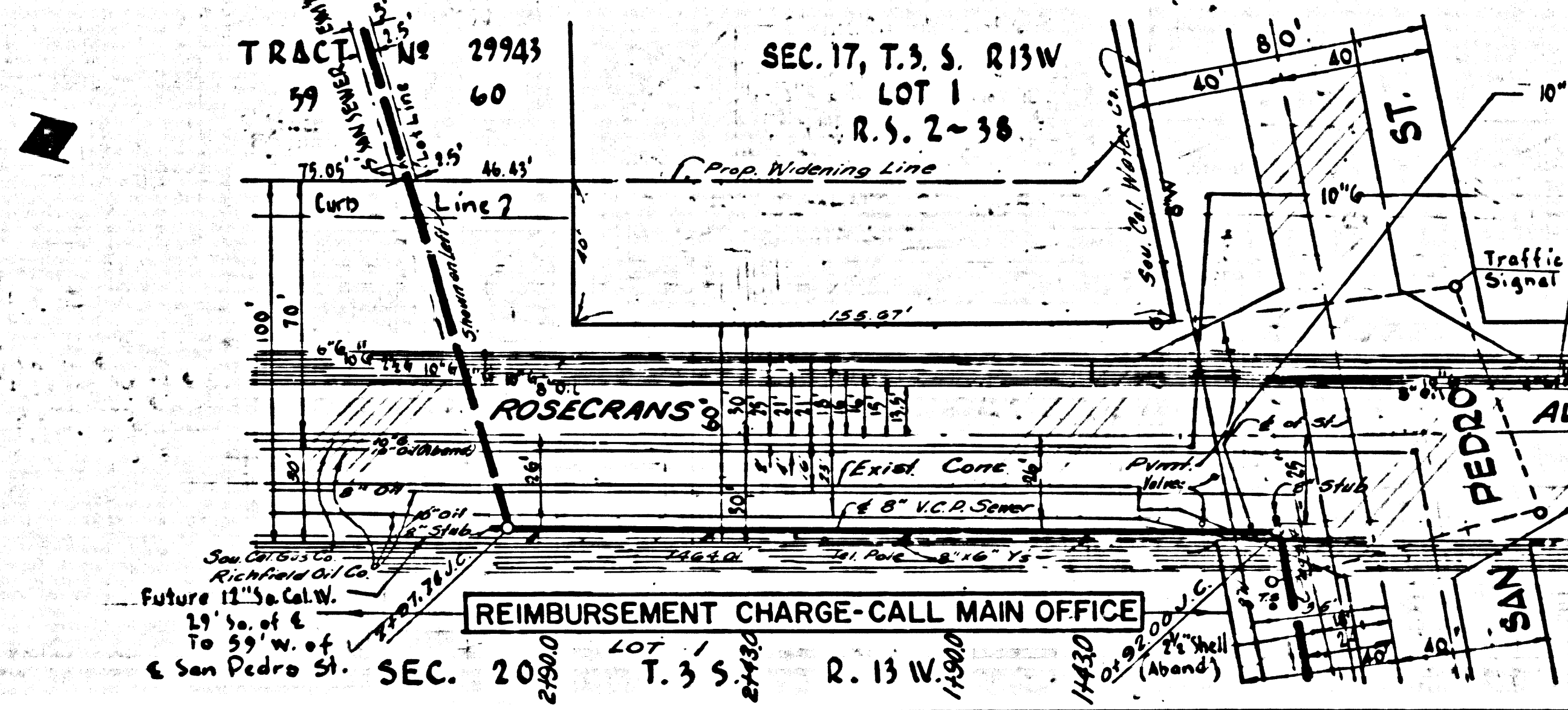
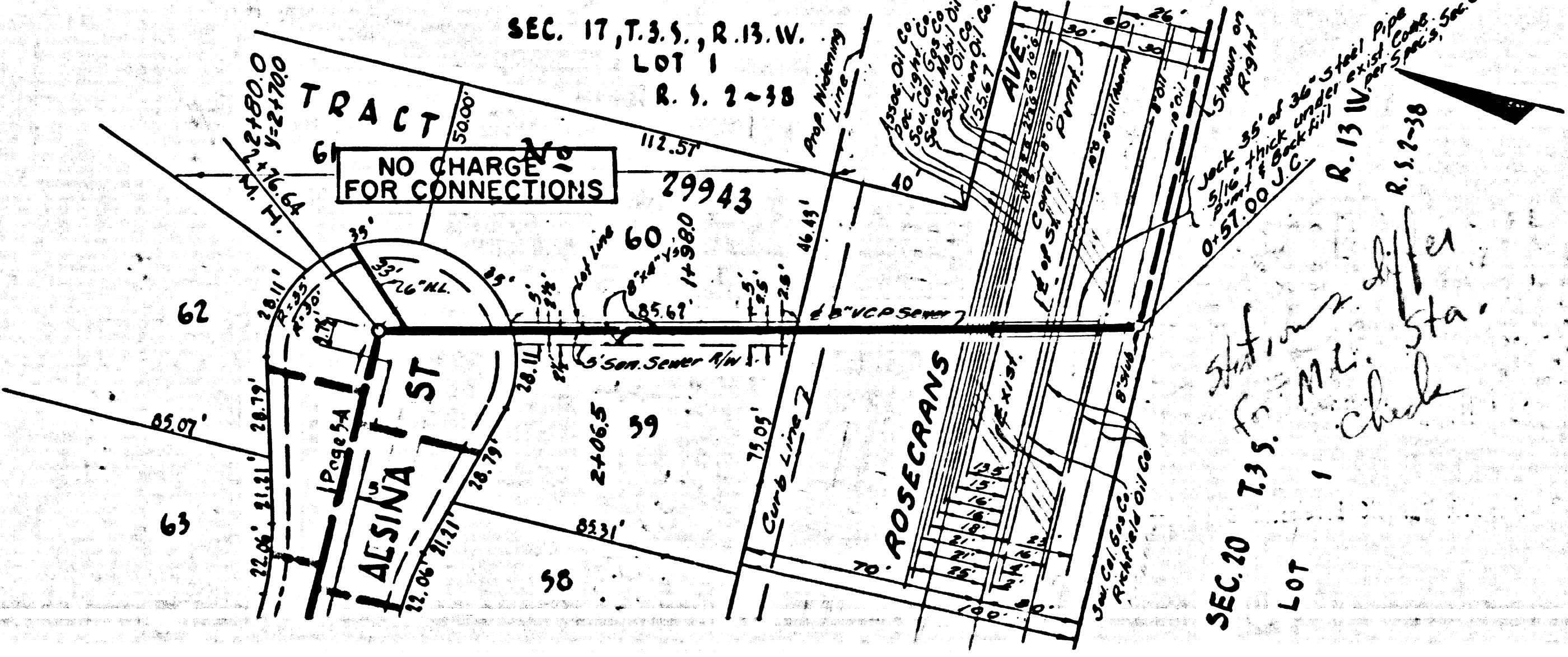
SEC. 17, T. 3 S., R. 13 W.
LOT 1

REIMBURSEMENT CHARGE-CALL MAIN OFFICE



COLLECT CHARGES AS INDICATED

36668

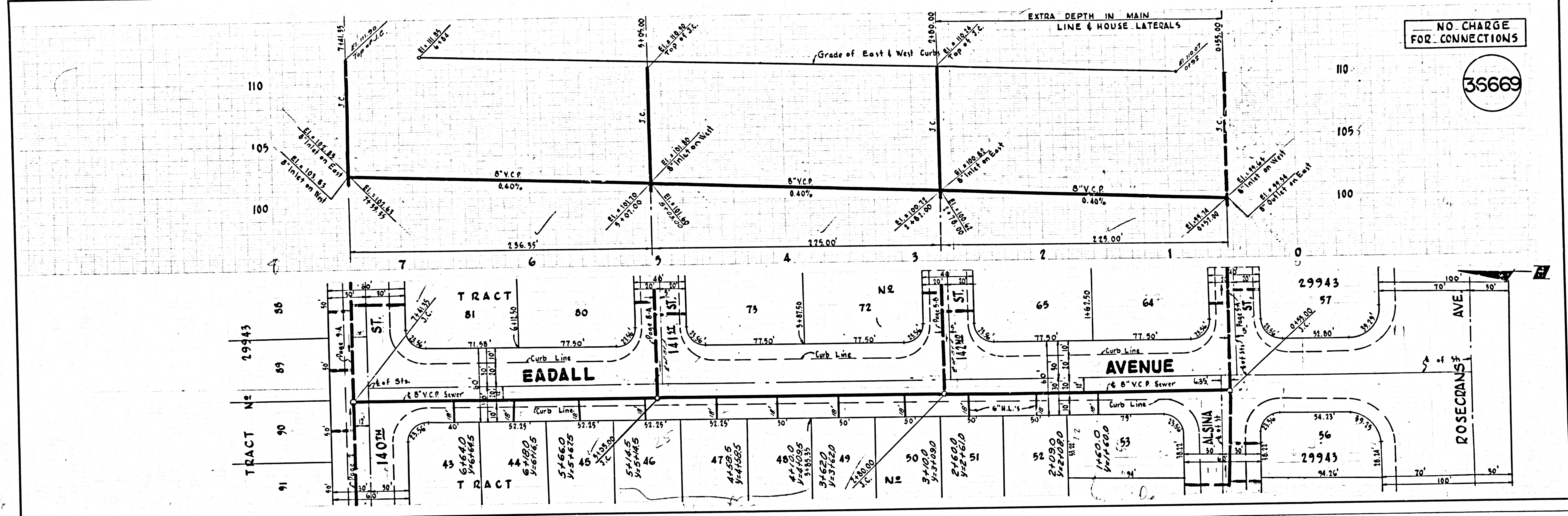


SEC. 17, T. 3 S., R. 13 W.
LOT 1

REIMBURSEMENT CHARGE-CALL MAIN OFFICE

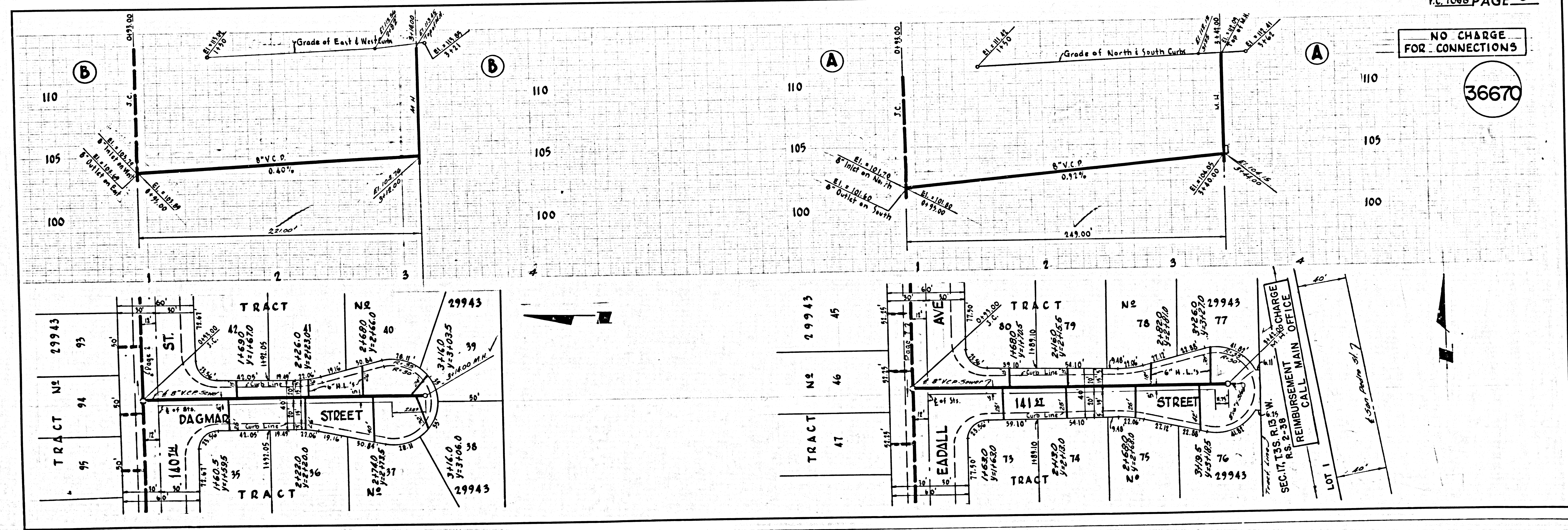
NO CHARGE FOR CONNECTIONS

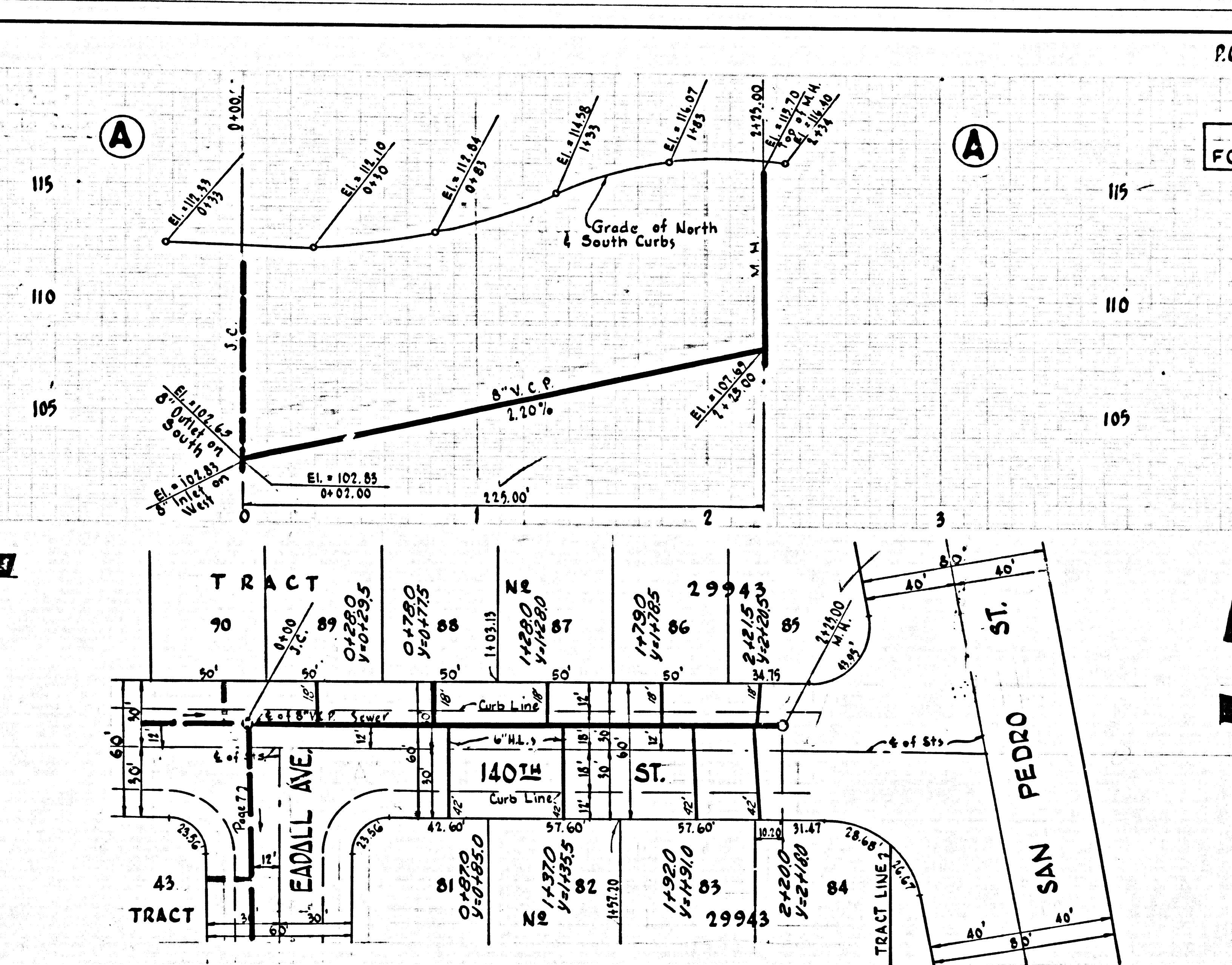
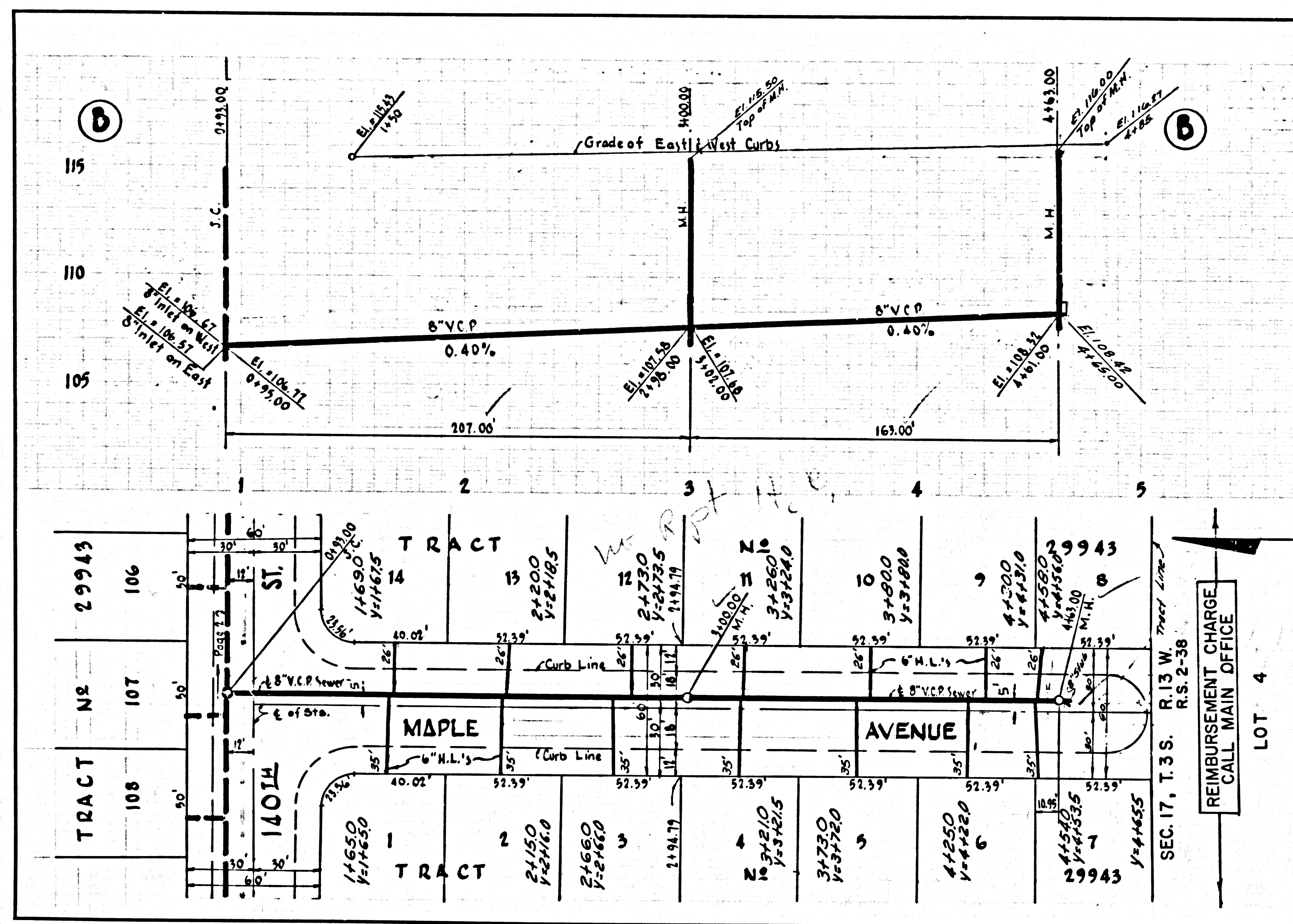
35669



NO CHARGE FOR CONNECTIONS

36670

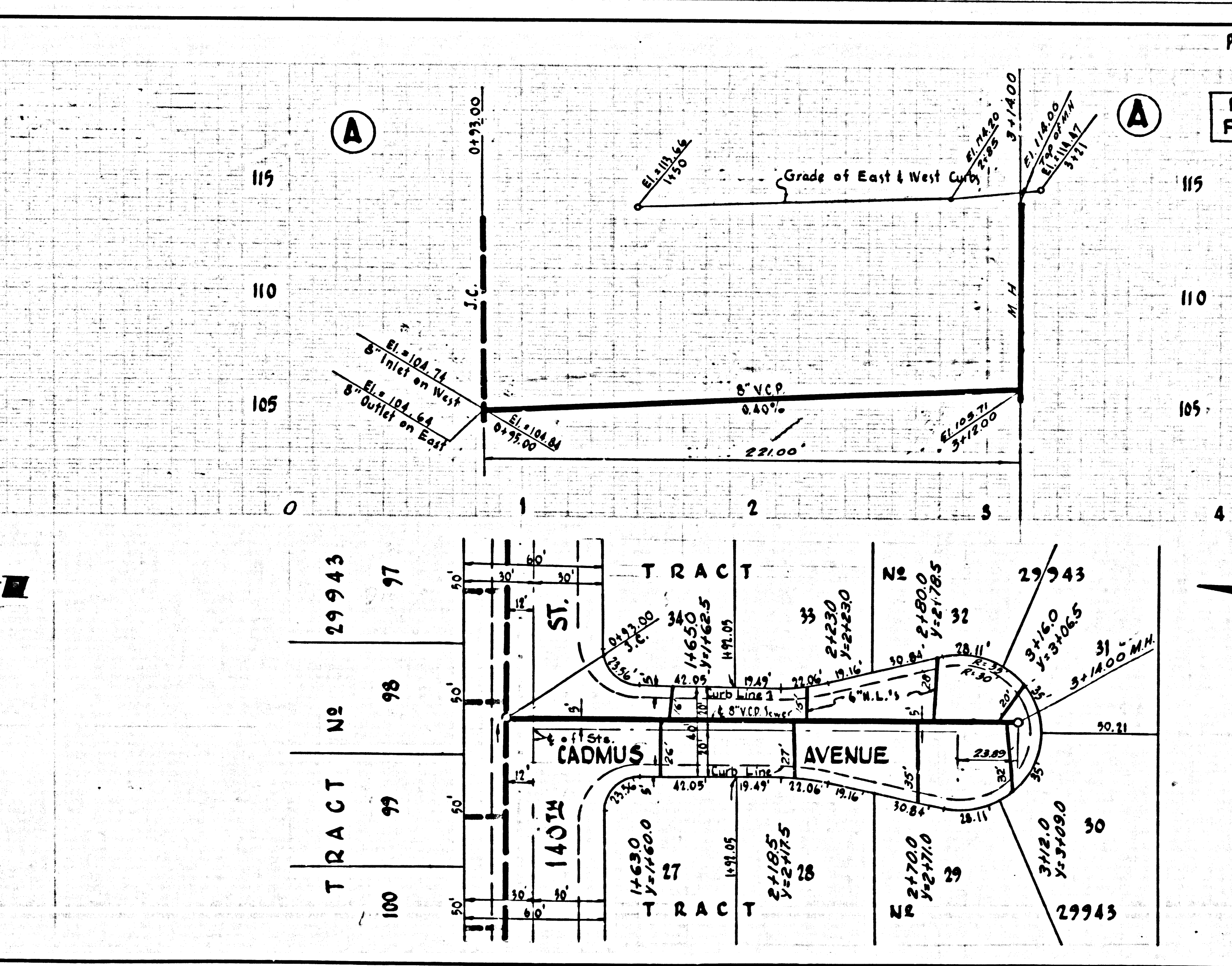
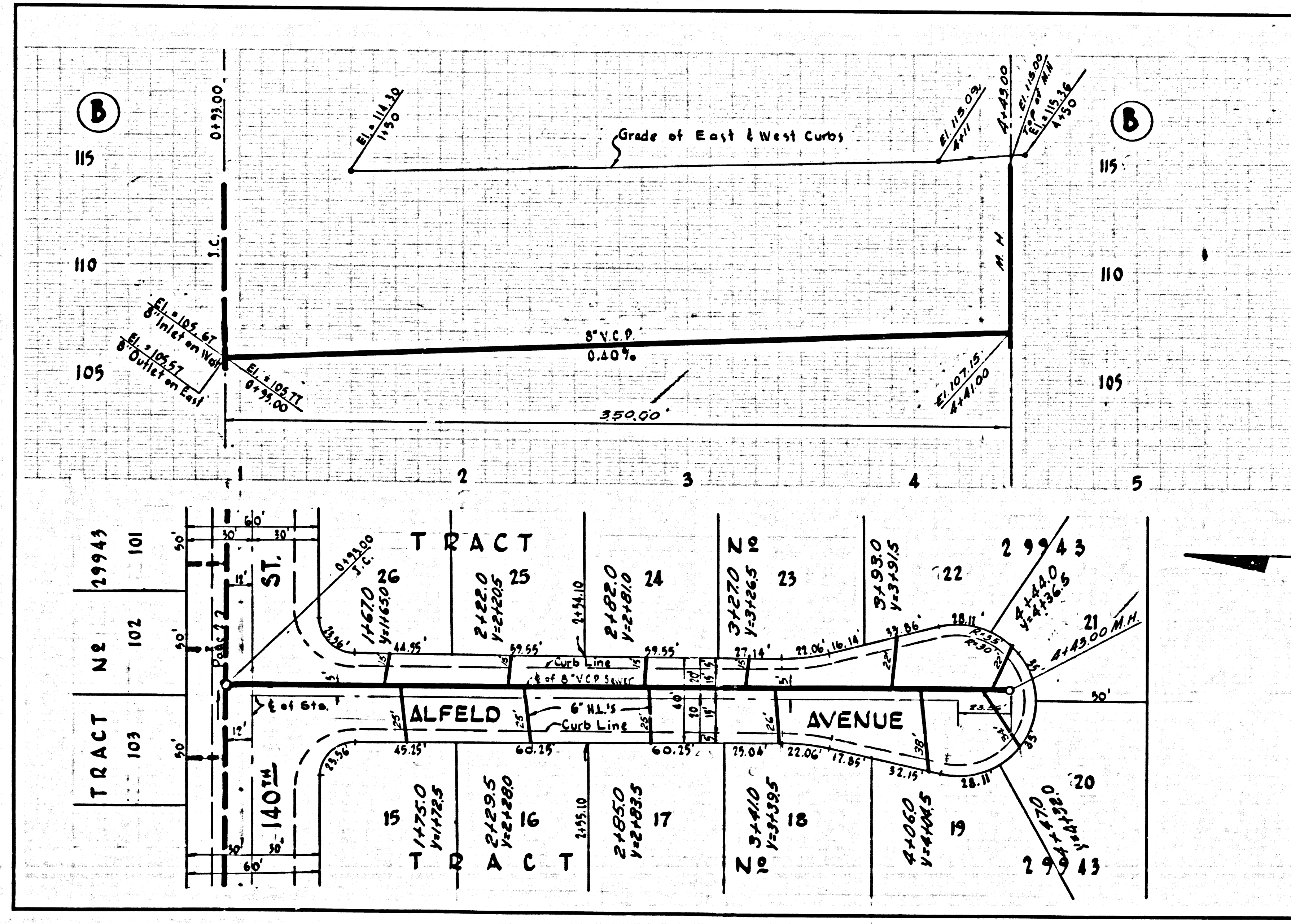




P.C. 7066 PAGE 9

NO CHARGE FOR CONNECTIONS

36671



P.C. 7066 PAGE 10

NO CHARGE FOR CONNECTIONS

36672

PC 1099

ST 1401 1099