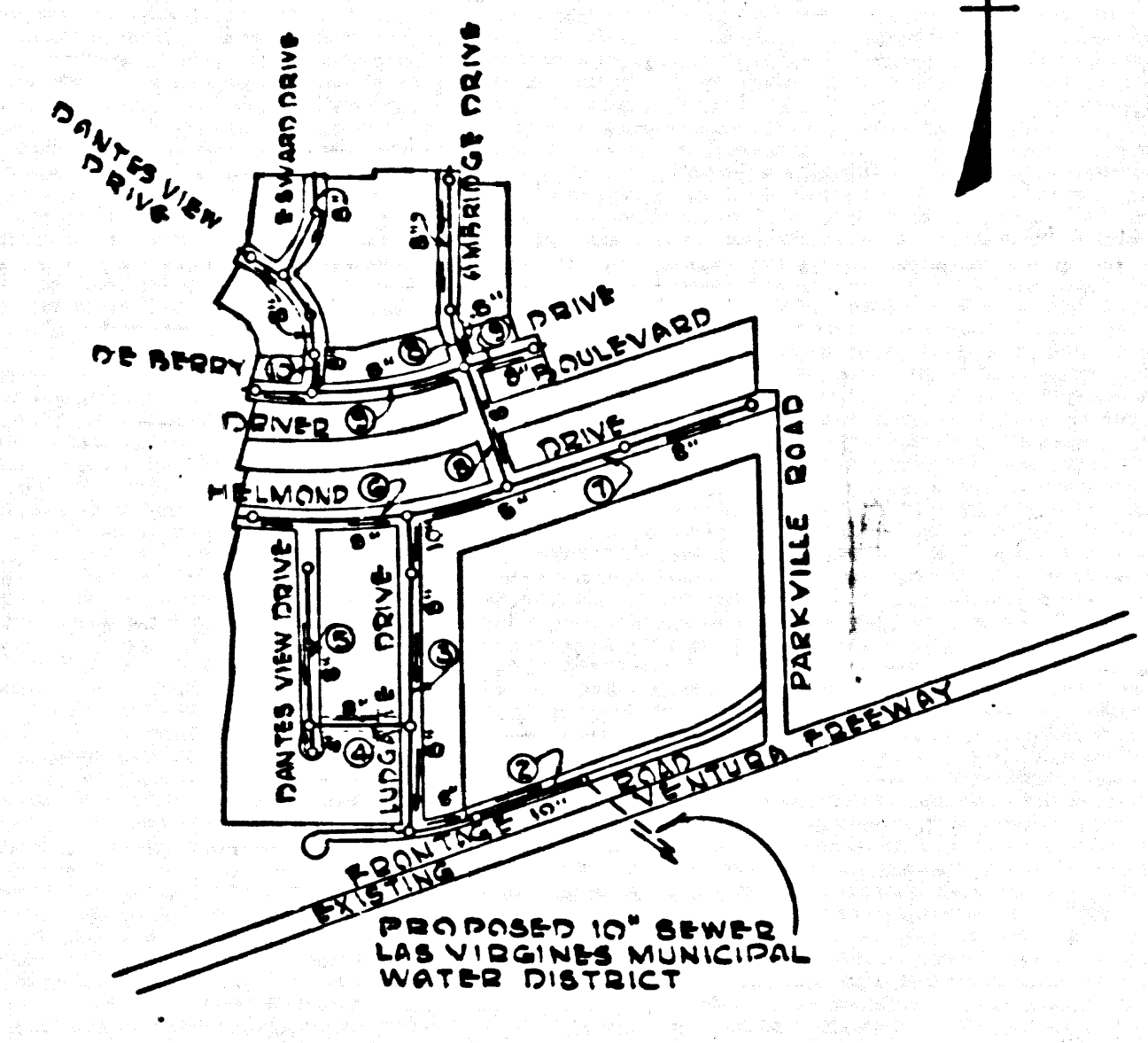


B.M. S.Y. 5609 ELEV. 778.878
 CHISELED SQUARE AT SW CORNER
 BASIN (FOR AULT) ON YANTIRAN
 BOULEVARD STA. 825+00
 1/4 MILE N. E. RANDALL STREET
 1/4 MILE W. LAS VIRGENES ROAD
 MALIBU QUAD. 1960



INDEX MAP
 SCALE 1" = 600'
 TRACT NO. 29890
 P.C. 7071

ISSUE NO H.L. PERMITS
 UNTIL OUTLET IS AVAILABLE

DATE	REVISIONS
3/13/65	Raised Sewer grade to New Street Grades on Ambridge Dr., De Berry Dr., Danvers View Dr., & Esnerd Dr. Pages 8, 9 & 10
3-13-65	Changed M.H. on Sheet S-4 from Sta. 1450 to Sta. 1451. Approved: Edward J. J. J.

DOUBLE SCALE
 CALABASAS BLDG. DIST. NO. 9.1

PROFILE ALIGNMENT AND GRADE OF
 SANITARY SEWERS PAGE 1

TRACT NO. 29890
 PRIVATE CONTRACT NO. 7071

W.S. 80
 5 SHEETS, 10 PAGES
 SCALE: VERT. 1" = 4' HORIZ. 1" = 40' Aug. 1, 1964

PREPARED BY THE OFFICES OF
 JENSEN ASSOCIATES ENGINEERS, INC.
 William J. Jensen
 REG. P.E. NO. 10276

- NOTE:
- PROVIDE STAKES ON THE PROPERTY LINE OR PROPERTY LINES PRODUCED AT RIGHT ANGLES TO THE SEWER LINE AT THE CENTER LINE OF EACH MANHOLE.
 - NO REPRESENTATIVE OF THE COUNTY ENGINEER WILL BUY, TRY OR LAY OUT ANY PORTION OF THE WORK.
 - THE PRIVATE ENGINEER SHALL FURNISH THE COUNTY ENGINEER WITH GRADE SHEETS AND STATIONING FOR ALL HOUSE LATERALS AND T-BRANCHES AND SHALL PROVIDE STAKES FOR THEM AT THEIR PROPER LOCATIONS WITH EXISTING PLAIN MARKERS. ALL HOUSE LATERALS SHALL BE CONSTRUCTED IN A STRAIGHT ALIGNMENT AT RIGHT ANGLES FROM THE MAIN LINE SEWER EXCEPT AS SHOWN ON THE PLANS. HOUSE LATERALS FROM CHIMNEYS SHALL NOT HAVE AN ANGLE OF LIES THAN 45° WITH THE MAIN LINE SEWER. ANY CHANGE IN ALIGNMENT SHALL BE REQUESTED BY WRITING BY THE PRIVATE ENGINEER.
 - THE PRIVATE ENGINEER SHALL FURNISH THE HOUSE LATERAL DEPTH AT THE PROPERTY LINE BELOW THE TOP OF CURB ELEVATION FOR EACH HOUSE LATERAL ON THE GRADE SHEET.
 - NO REVISIONS SHALL BE MADE IN THESE PLANS WITHOUT THE APPROVAL OF THE COUNTY ENGINEER.
 - THE CONTRACTOR SHALL NOTIFY THE CONSTRUCTION DIVISION BY TELEPHONE, HADSDON 9-4747, EXT. 8153, AT LEAST TWENTY-FOUR HOURS BEFORE STARTING ANY WORK UNDER THIS CONTRACT.
 - MANHOLES SHALL BE BRICK SEWER STRUCTURES PER S-104. PRECAST CONCRETE MANHOLES PER S-135 OR S-173 MAY BE USED AS AN ALTERNATE IN LOCATIONS APPROVED BY THE COUNTY ENGINEER.
 - USE STANDARD MANHOLE FRAMES AND COVERS, S-207, EXCEPT AS NOTED.
 - MANHOLE TOPS IN UNAPPROVED RIGHTS-OF-WAY TO BE SIX INCHES ABOVE FINISHED GRADE.
 - USE EXTRA STRENGTH PIPE. ALL PIPE IS STANDARD DEPTH EXCEPT AS NOTED.
 - USE MECHANICAL COMPRESSION JOINTS FOR ALL V.C.P. JOINTS PER SPECS. SECS. 34 & 48. (43)
 - WHERE EVER GROUND WATER IS ENCOUNTERED DURING THE CONSTRUCTION OF THE SEWERS, THE V.C.P. JOINTS SHALL BE OF JOINT COMPOUND PER SPECS. SECS. 33 & 46, OR MECHANICAL COMPRESSION JOINTS PER SPECS. SEC. 34.
 - IF A POWER POLE IS WITHIN THREE FEET OF THE SEWER, THE SEWER SHALL BE ENCASED, PER S-173, CASE III, TWO FEET ON EITHER SIDE FROM THE POINT OF INTERFERENCE.
 - IF DURING THE COURSE OF CONSTRUCTION IT IS DETERMINED THAT THERE IS LESS THAN FOUR FEET OF COVER OVER THE TOP OF A MAIN LINE OR HOUSE LATERAL V.C.P. SEWER WHICH IS NOT INDICATED ON THE PLANS, THE PIPE SHALL BE ENCASED PER S-173, CASE III, UNLESS OTHERWISE APPROVED BY THE COUNTY ENGINEER.
 - HOUSE LATERALS TO BE CONSTRUCTED WITH INVERTS AT PROPERTY LINE... FEET BELOW CURB GRADE EXCEPT AS NOTED.
 - REINFORCE ALL TRENCHES WITHIN PAVED AREAS TO MEET L.A. COUNTY ROAD DEPT. OR CALIFORNIA STATE HIGHWAY REQUIREMENTS.
 - FOR ALLOWABLE LEAKAGE TEST USE FORMULA NO. 2, SPECS. SEC. 64.
 - Construction in Filled Areas
 (a) All construction in filled areas shall be certified by the contractor as to the density of compaction test results shall be submitted to the Construction Division. Compaction test shall be in accordance with A.S.T.M. Standard Method of Test D 1557-47.
 (b) No construction is permitted in filled areas where the relative density of compaction is less than 90%.
 (c) If the relative density of compaction is less than 90%, all fill shall be compacted in 6" lifts. Each lift shall have a special base course per S-173, Case III. Special provisions in (c) are not required.
 (d) If the relative density of compaction is 90% or greater, the special provisions in (c) are not required.
 (e) All State and local trench safety orders will be rigidly enforced.
 15. House laterals not to be constructed beyond stations where indicated on plans.

NOTE:
 GRADES TO WHICH THIS IMPROVEMENT IS TO BE CONSTRUCTED ARE SHOWN ON PLANS AND PROFILE. GRADE POINTS FOR TOP OF CURBS, CENTER LINE OF STREETS, OR CENTER LINE OF ALLEYS ARE SHOWN BY CIRCLES ON PROFILES AT ALL POINTS BETWEEN DESIGNATED POINTS. THE GRADE SHALL BE ESTABLISHED SO AS TO CONFORM TO A STRAIGHT LINE DRAWN BETWEEN SAID DESIGNATED POINTS. ELEVATIONS ARE IN FEET ABOVE U.S.C. & G.S. MEAN SEA LEVEL DATUM OF 1929.
 THE DRAWING AND THE DATA HEREON ARE HEREBY MADE A PART OF THE SPECIFICATIONS.
 WORK SHALL BE CONSTRUCTED ACCORDING TO STANDARD SPECIFICATIONS DATED 8/27/52, 1962, ON FILE IN THE OFFICE OF THE COUNTY ENGINEER AND SHALL BE PROCEEDED ONLY IN THE PRESENCE OF THE COUNTY ENGINEER.
 BEFORE WORK CAN BE STARTED, THE CONTRACTOR MUST OBTAIN A PERMIT TO EXCAVATE IN COUNTY STREETS FROM THE L.A. COUNTY ROAD DEPT., DISTRICT OFFICE NO. 100 AND PAY TO THE COUNTY ENGINEER, ROOM 200, COUNTY ENGINEERING BUILDING, 100 WEST SECOND STREET OR 100 WEST 10TH ST., LOS ANGELES, CALIF. REGIONAL OFFICE, SUFFICIENT TO COVER THE COST OF CONSTRUCTION INSPECTION AND SECOND PLANS.
 APPROVAL OF THIS PLAN BY THE COUNTY OF LOS ANGELES DOES NOT CONSTITUTE A REPRESENTATION AS TO THE ACCURACY OF THE LOCATION OF OR THE EXISTENCE OR NON-EXISTENCE OF ANY UNDERGROUND UTILITY PIPE, OR STRUCTURE WITHIN THE LIMITS OF THIS PROJECT. THIS NOTE APPLIES TO ALL PAGES.
 IF WORK IS TO BE DONE IN A STATE HIGHWAY, A PERMIT MUST BE OBTAINED FROM THE STATE OF CALIFORNIA, DIVISION OF HIGHWAYS, 120 SOUTH SPRING STREET, LOS ANGELES, CALIFORNIA.

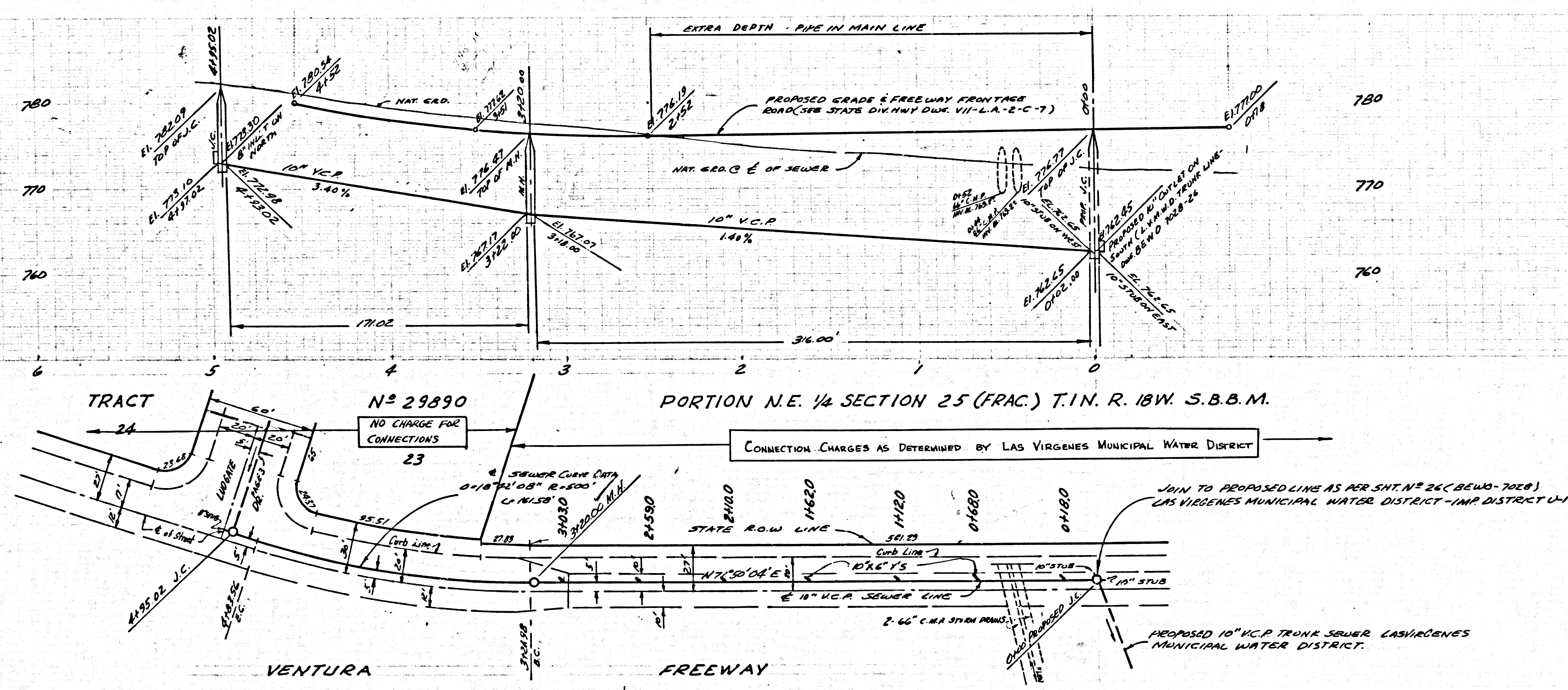
COUNTY OF LOS ANGELES, CALIFORNIA
 JOHN A. LAMBIE, COUNTY ENGINEER
 LAS VIRGENES MUNICIPAL WATER DISTRICT
 APPROVED BY: [Signature] OFFICE ENGINEER
 SUBMITTED BY: [Signature] REGIONAL ENGINEER
 CHECKED BY: [Signature] REG. C.E. NO. 10653

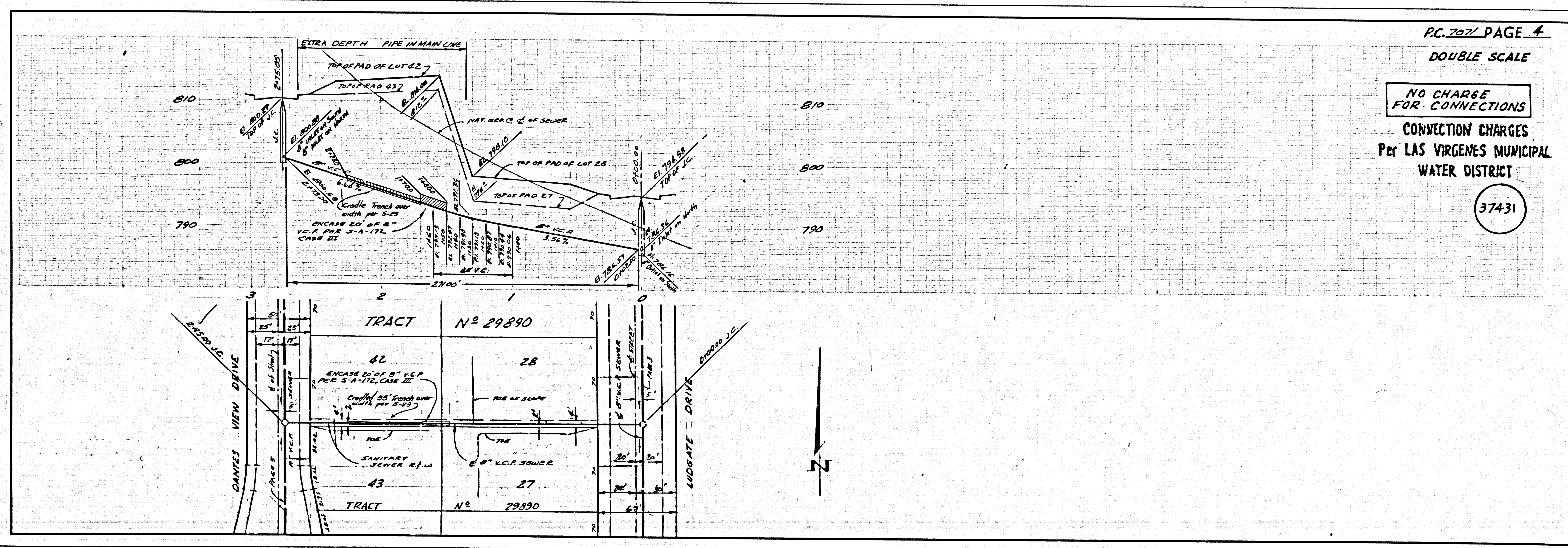
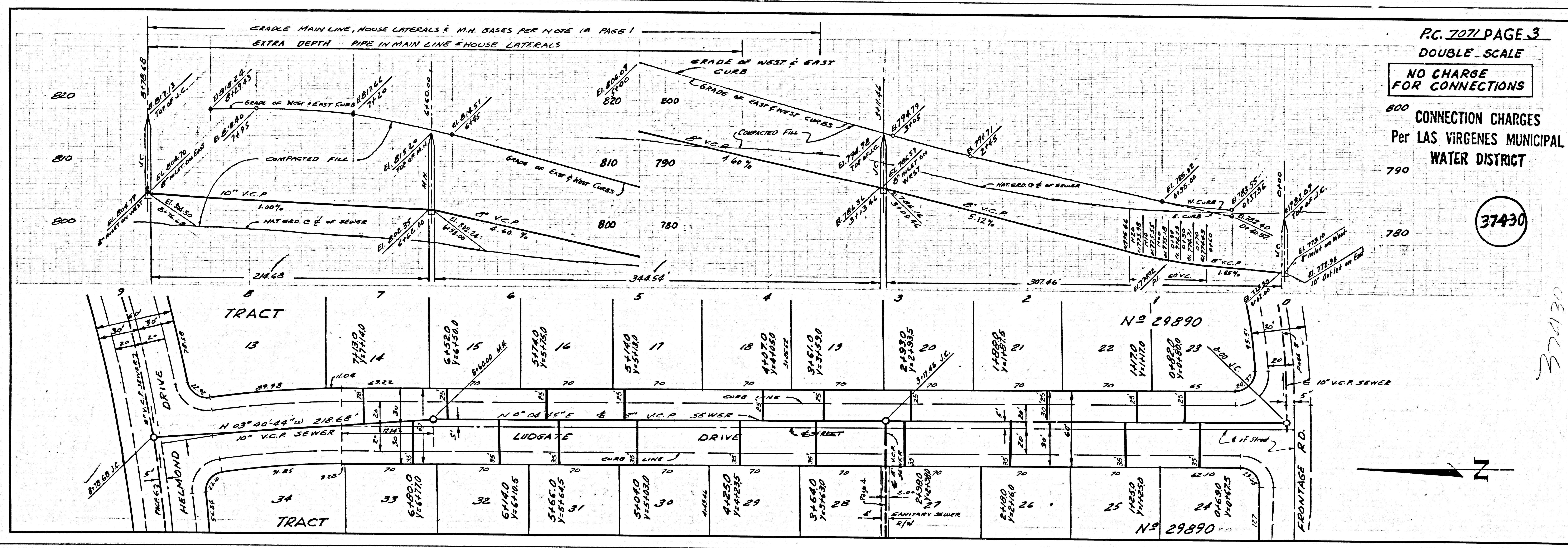
J. N. 0363.74

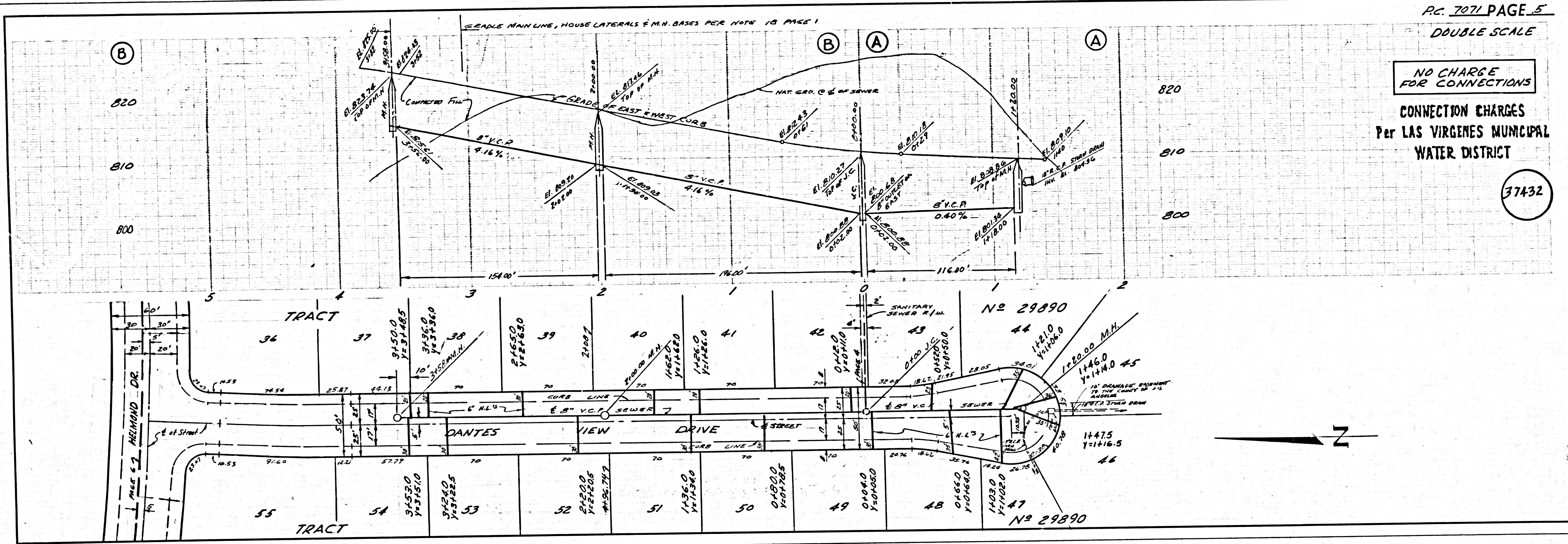
P. C. 7071 PAGE 2
 DOUBLE SCALE
 COLLECT CHARGES AS INDICATED

CONNECTION CHARGES
 Per LAS VIRGENES MUNICIPAL WATER DISTRICT

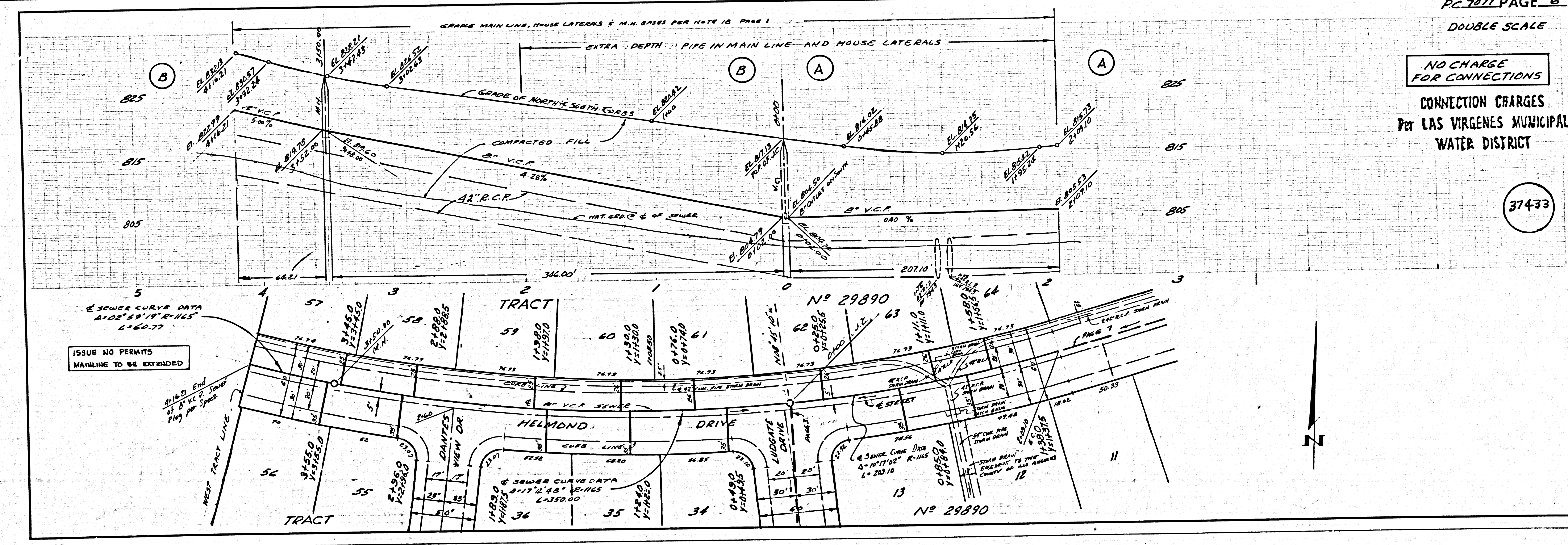
37429







PC 7071 PAGE 5
 DOUBLE SCALE
 NO CHARGE FOR CONNECTIONS
 CONNECTION CHARGES
 Per LAS VIRGENES MUNICIPAL WATER DISTRICT
 37432

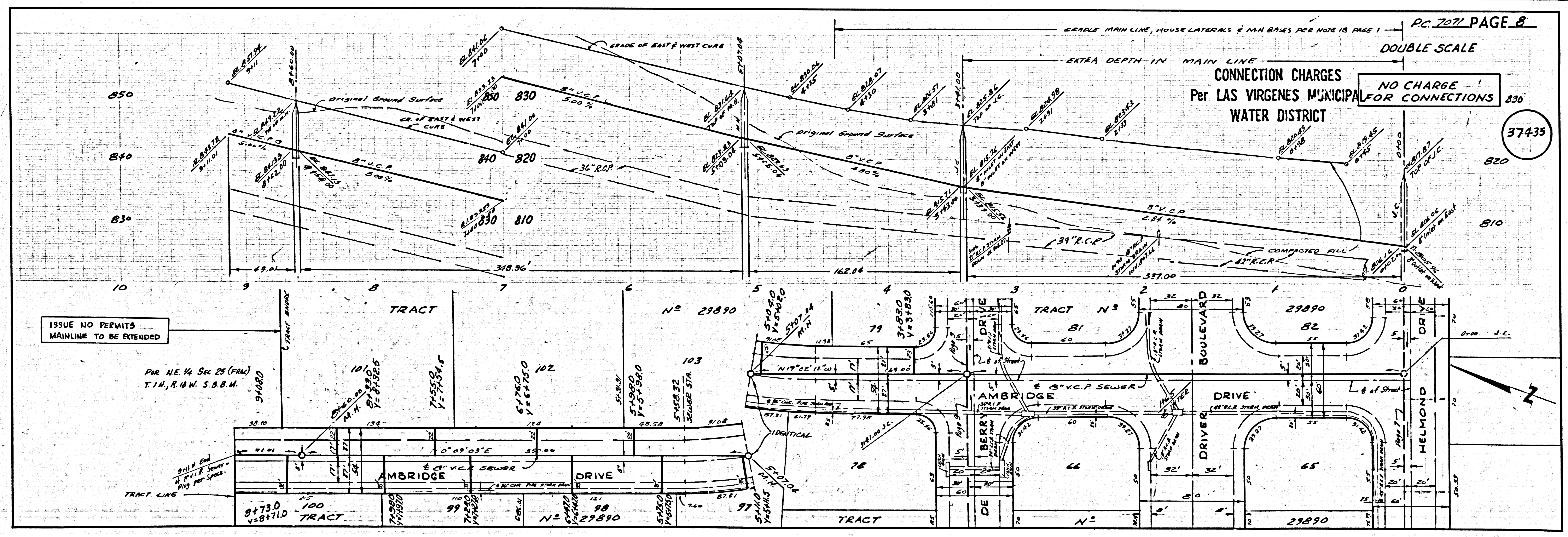
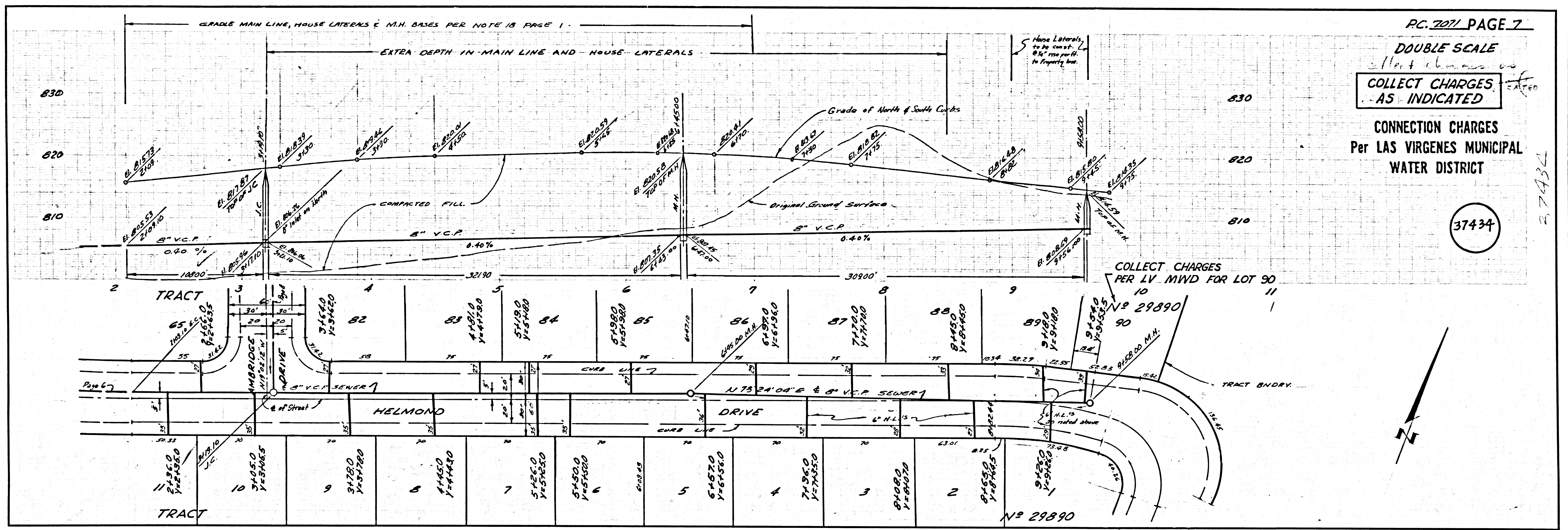


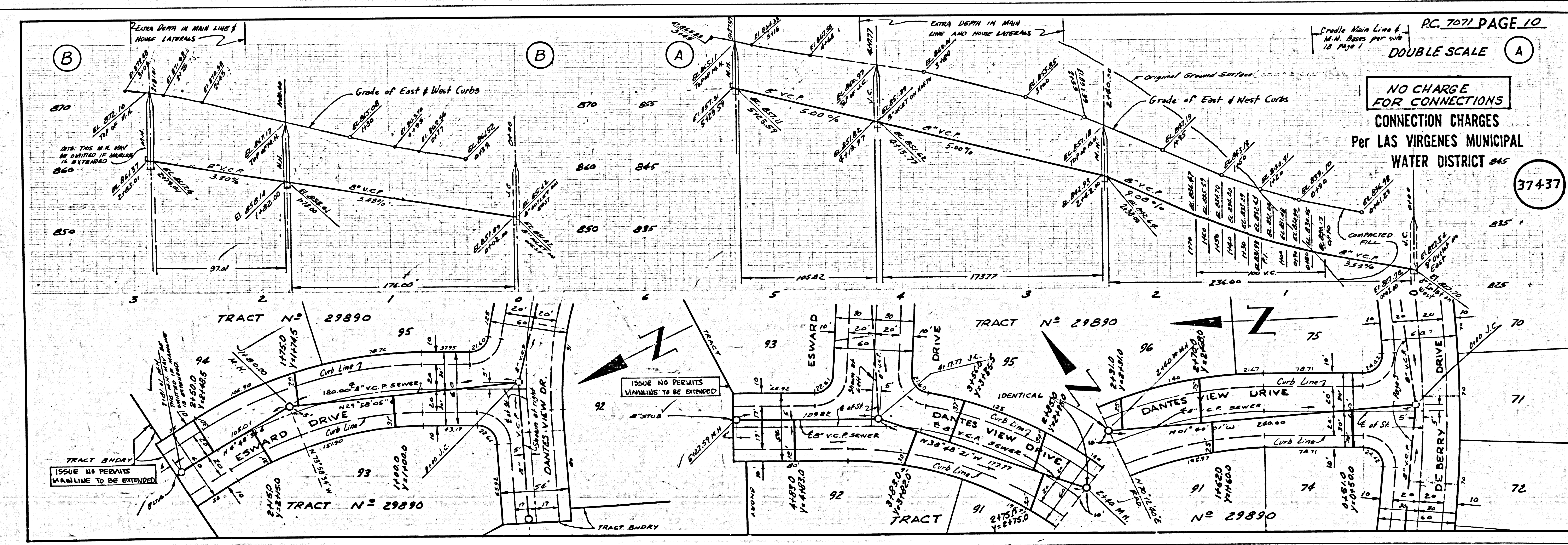
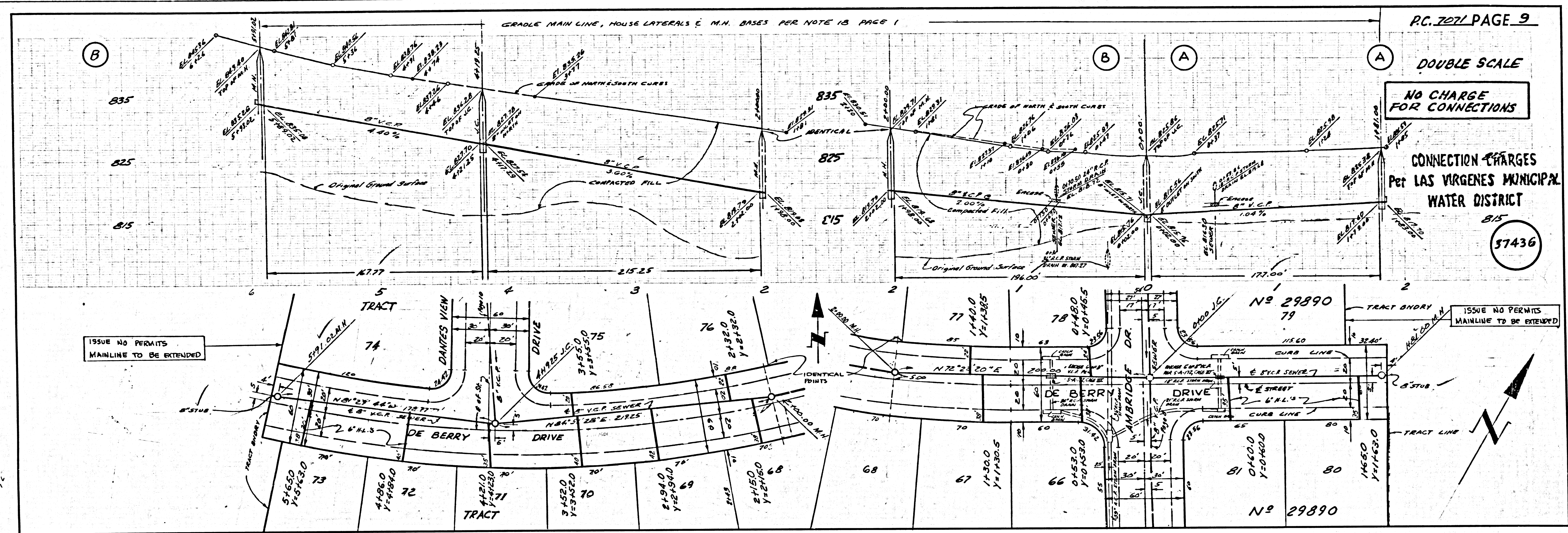
PC 7071 PAGE 6
 DOUBLE SCALE
 NO CHARGE FOR CONNECTIONS
 CONNECTION CHARGES
 Per LAS VIRGENES MUNICIPAL WATER DISTRICT
 37433

37432

37433

37433





1505 38' DEERES ON TRACT

272