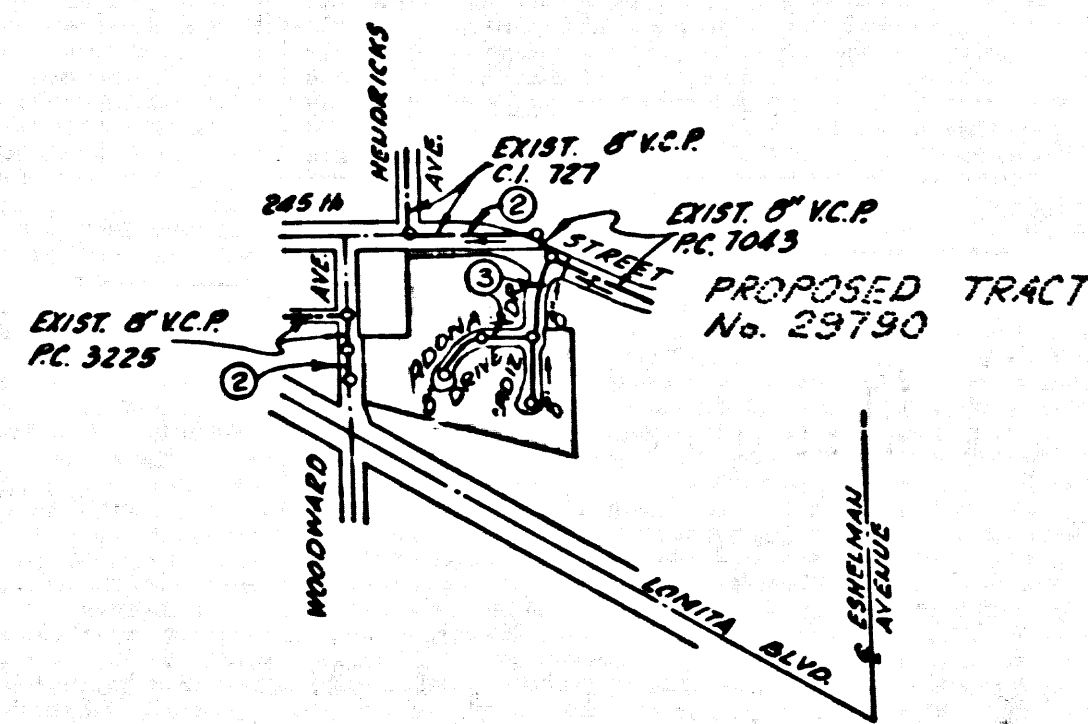


B.M. SY. 3518 A ELEV. 69.233
 L&T in West Curb of Oak Street 33
 South of Curb Return of Southwest
 Corner of Oak Street and Lomita Blvd.
 Base Line QUAD. 1955



INDEX MAP TRACT NO. 27841
 Scale 1"=600'

CITY OF LOMITA BLDG. DIST. NO. 12.04

- NOTES:
1. PROVIDE STAKES ON THE PROPERTY LINE OR PROPERTY LINES PRODUCED AT RIGHT ANGLES TO THE SEWER LINE AT THE CENTER LINE OF EACH MANHOLE.
 2. NO REPRESENTATIVE OF THE CITY ENGINEER WILL SURVEY OR LAY OUT ANY PORTION OF THE WORK.
 3. THE PRIVATE ENGINEER SHALL FURNISH THE CITY ENGINEER WITH GRADE SHEETS AND STATIONING FOR ALL HOUSE LATERALS AND Y BRANCHES AND SHALL PROVIDE STAKES FOR THEM AT THEIR PROPER LOCATIONS WITH STATIONING PLAINLY MARKED. HOUSE LATERALS SHALL BE CONSTRUCTED IN A STRAIGHT ALIGNMENT AT RIGHT ANGLES FROM THE MAIN LINE SEWER EXCEPT AS SHOWN ON THE PLANS. HOUSE LATERALS FROM CHIMNEYS SHALL NOT HAVE AN ANGLE OF LESS THAN 45° WITH THE MAIN LINE SEWER. ANY CHANGE IN ALIGNMENT SHALL BE REQUESTED IN WRITING BY THE PRIVATE ENGINEER.
 4. THE PRIVATE ENGINEER SHALL FURNISH THE HOUSE LATERAL DEPTH AT THE PROPERTY LINE BELOW THE TOP OF CURB ELEVATION FOR EACH HOUSE LATERAL ON THE GRADE SHEET.
 5. NO REVISIONS SHALL BE MADE IN THESE PLANS WITHOUT THE APPROVAL OF THE CITY ENGINEER.
 6. THE CONTRACTOR SHALL NOTIFY THE CONSTRUCTION DIVISION BY TELEPHONE, MADISON 9-4747, EXT. 8158, AT LEAST TWENTY-FOUR HOURS BEFORE STARTING ANY WORK UNDER THIS CONTRACT.
 7. MANHOLES SHALL BE BRICK SEWER STRUCTURES PER S-104, PRECAST CONCRETE MANHOLES PER S-125 OR S-173 MAY BE USED AS AN ALTERNATE IN LOCATIONS APPROVED BY THE CITY ENGINEER.
 8. USE STANDARD MANHOLE FRAMES AND COVERS, S-317, EXCEPT AS NOTED.
 9. MANHOLE TOPS IN UNIMPROVED RIGHTS-OF-WAY TO BE SIX INCHES ABOVE FINISHED GRADE.
 10. USE EXTRA STRENGTH PIPE. ALL PIPE IS STANDARD DEPTH EXCEPT AS NOTED.
 11. USE MECHANICAL COMPRESSION JOINTS FOR ALL V.C.P. JOINTS PER SPECS. SECS. 34 & 44, S-149
 12. WHERE FIVE GROUND WATER IS ENCOUNTERED DURING THE CONSTRUCTION OF THE SEWERS, THE V.C.P. JOINTS SHALL BE OF JOINT COMPOUND PER SPECS. SECS. 33 & 44, OR MECHANICAL COMPRESSION JOINTS PER SPECS. SEC. 36.
 13. IF A POWER POLE IS WITHIN THREE FEET OF THE SEWER, THE SEWER SHALL BE ENCASED, PER S-172, CASE III, TWO FEET ON EITHER SIDE FROM THE POINT OF INTERFERENCE.
 14. IF DURING THE COURSE OF CONSTRUCTION IT IS DETERMINED THAT THERE IS LESS THAN FOUR FEET OF COVER OVER THE TOP OF A MAIN LINE OR HOUSE LATERAL V.C.P. SEWER WHICH IS NOT INDICATED ON THE PLANS, THE PIPE SHALL BE ENCASED PER S-172, CASE II, UNLESS OTHERWISE APPROVED BY THE CITY ENGINEER.
 15. HOUSE LATERALS TO BE CONSTRUCTED WITH INVERTS AT PROPERTY LINE... FEET BELOW CURB GRADE EXCEPT AS NOTED.
 16. REINFORCE ALL TRENCHES WITHIN PAVED AREAS TO MEET CITY OF LOMITA HIGHWAY DEPT. OR CALIFORNIA STATE HIGHWAY REQUIREMENTS IN ACCORDANCE WITH PERMITS.
 17. FOR ALLOWABLE LEAKAGE TEST USE FORMULA NO. 12, SPECS. SEC. 54.
 18. All State and Local French safety orders will be rigidly enforced.

19. The existence and location of any underground utility pipes and structures shown on these plans are obtained by a search of the available records. To the best of our knowledge there are no existing utilities except as shown on these plans. The contractor is required to take precautionary measures to protect the utility lines shown and any other lines not of record or not shown on these plans.

COLLECT CHARGES AS INDICATED

NO CONNECTIONS FOR THE DISPOSAL OF INDUSTRIAL WASTES SHALL BE MADE TO SEWERS SHOWN ON THESE DRAWINGS WITHOUT WRITTEN PERMISSION FROM THE CHIEF ENGINEER AND GENERAL MANAGER OF THE COUNTY SANITATION DISTRICT.

PROFILE ALIGNMENT AND GRADE OF P.C. 7074
 SANITARY SEWERS PAGE 1

TO BE CONSTRUCTED IN
 TRACT NO. 27841

PRIVATE CONTRACT NO. 7074

W.S. 28

2 SHEETS, 3 PAGES

SCALE: VERT. 1"=4' HORIZ. 1"=40' JUNE, 1964

PREPARED IN THE OFFICES OF
 E.L. PEARSON & ASSOCIATES.

By *Thomas C. Clarke*
 Thomas C. Clarke, REG. C. E. NO. 3757

FOR LEGEND SEE PLAN NO. S-1-64

NOTE:
 GRADES TO WHICH THIS IMPROVEMENT IS TO BE CONSTRUCTED ARE SHOWN ON PLANS AND PROFILES. GRADE POINTS FOR TOP OF CURB, CENTER LINE OF STREETS, OR CENTER LINE OF ALLEYS ARE SHOWN BY CIRCLES ON PROFILES. AT ALL POINTS BETWEEN DESIGNATED POINTS THE GRADE SHALL BE ESTABLISHED SO AS TO CONFORM TO A STRAIGHT LINE BEHAVIOR BETWEEN SAID DESIGNATED POINTS. ELEVATIONS ARE IN FEET ABOVE U.S.C. & G.S. SEA LEVEL DATUM OF 1929. THIS DRAWING AND THE DATA HEREON ARE HEREBY MADE A PART OF THE SPECIFICATIONS. WORK SHALL BE CONSTRUCTED ACCORDING TO STANDARD SPECIFICATIONS DATED SEP. 25, 1962, ON FILE IN THE OFFICE OF THE CITY ENGINEER AND SHALL BE PROCEEDED ONLY IN THE PRESENCE OF THE CITY ENGINEER. BEFORE WORK CAN BE STARTED, THE CONTRACTOR MUST OBTAIN A PERMIT TO EXCAVATE IN CITY STREETS FROM THE CITY OF LOMITA, DISTRICT OFFICE NO. 3111 AND PAY A FEE TO THE CITY OF LOMITA, SUFFICIENT TO COVER THE COST OF CONSTRUCTION INSPECTION AND RECORD PLANS.

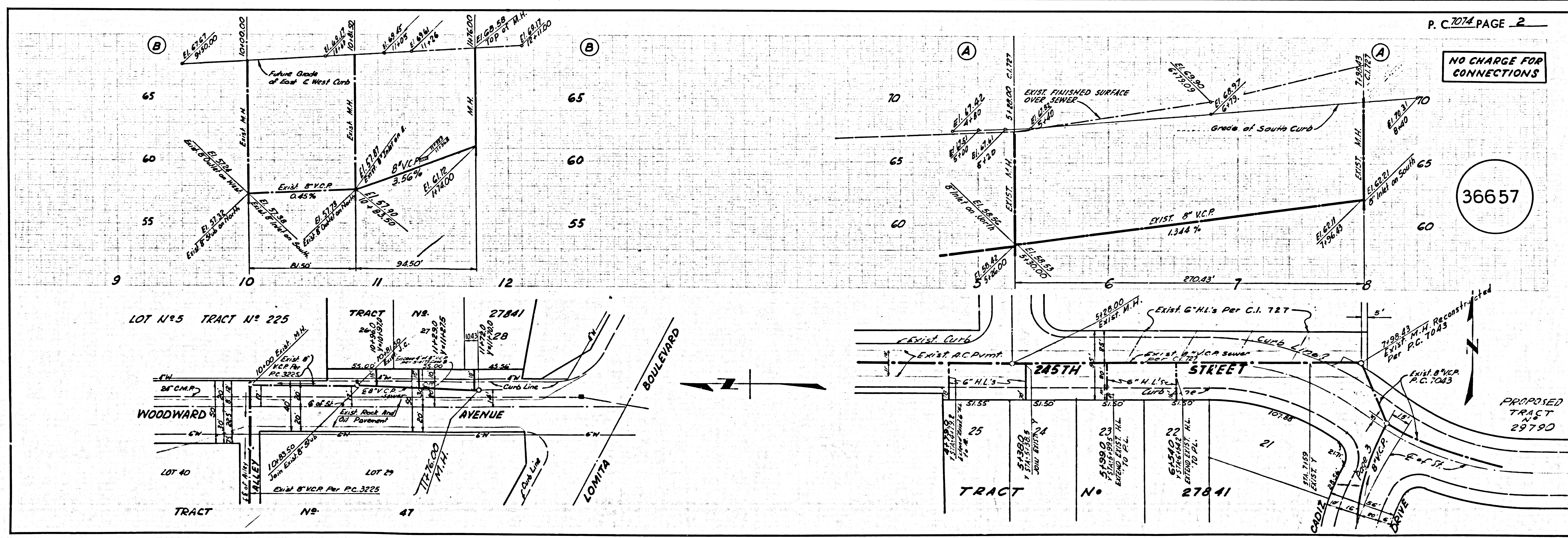
APPROVAL OF THIS PLAN BY THE CITY OF LOMITA DOES NOT CONSTITUTE A REPRESENTATION AS TO THE ACCURACY OF THE LOCATION OR THE EXISTENCE OR NON-EXISTENCE OF ANY UNDERGROUND UTILITY PIPE, OR STRUCTURE WITHIN THE LIMITS OF THE PROJECT. THIS NOTE APPLIES TO ALL PAGES OF THESE DRAWINGS.

APPROVED BY *John A. Lambie*, CITY ENGINEER
 APPROVED BY *J. D. Parkhurst*, CHIEF ENGINEER

SUBMITTED BY *Richard S. Hahn*, ASSISTANT SANITATION ENGINEER
 CHECKED BY *Thomas C. Clarke*, REGIONAL ENGINEER

36656

J. N. 312A.04



P. C. 7074 PAGE 2

NO CHARGE FOR CONNECTIONS

36657