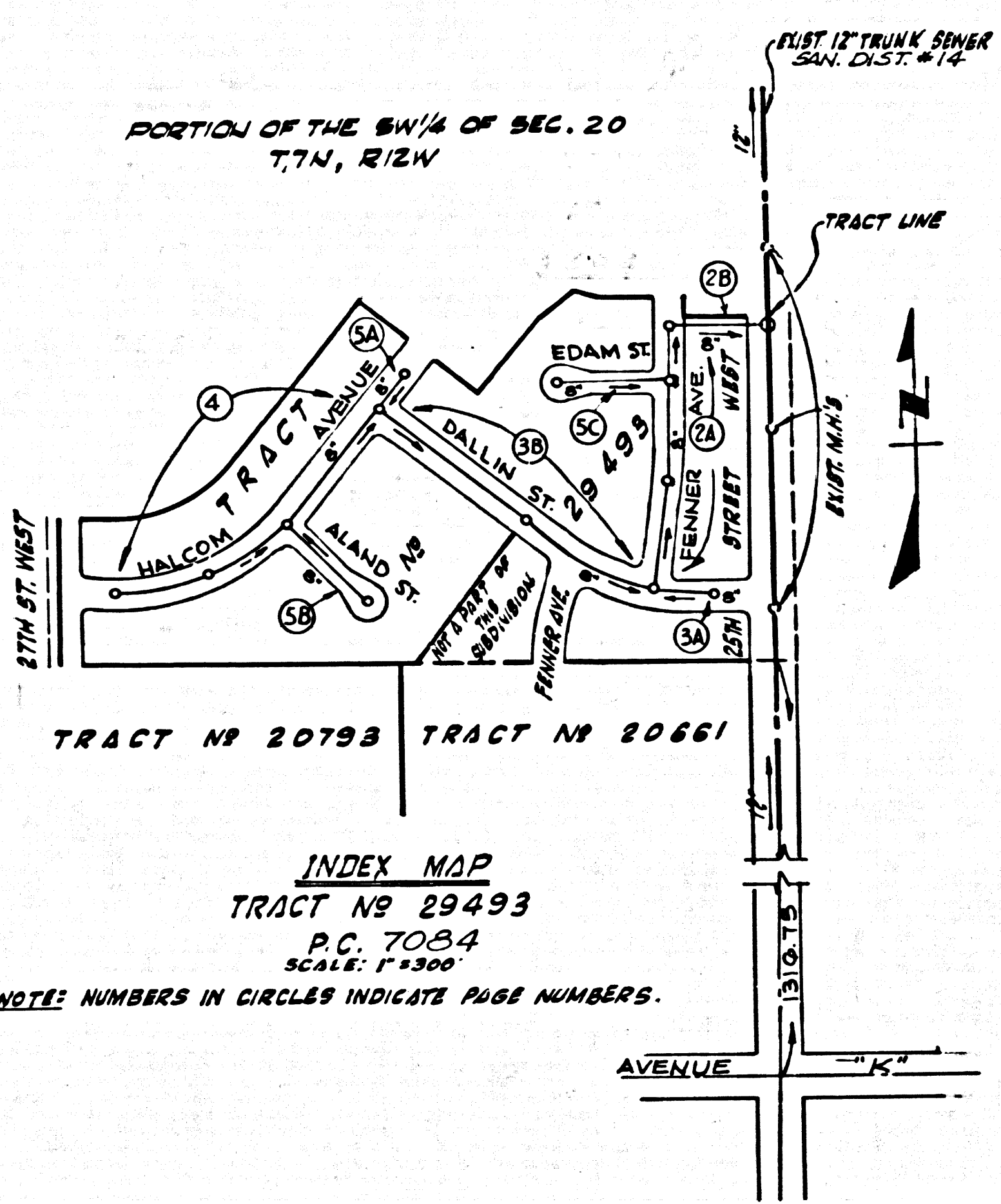


B.M. 5L-721 ELEV. 2388228
 L & T CONC DRIVE NEAR CONC BLOCK
 POST 42' S. 6 AVE K.C. 263' W &
 20TH ST. W. MKD B.M.
 LANCASTER QUAD. 1962



REVISION: 5-5-66
 Deletion of frontage connection
 charges and construction
 of one house lateral to serve
 a portion of the SW 1/4 of Sec. 20,
 T.7N., R.12W., S.R.B.M., pg. 3B,
 at Y=2+56.9.
 Approved Ralph A. Schep 5/19/66
 Office of the County Engineer (R.E. No.)

Revised
 Change 6" House Laterals on
 all pages to 4" House Laterals.
 Approved Ralph A. Schep Date 4/15/66

BEFORE BREAKING INTO ANY EXISTING STRUCTURE
 AND BEFORE FINAL ACCEPTANCE OF THIS WORK,
 COUNTY SANITATION DISTRICT (CU 4-1281) SHALL
 BE NOTIFIED IN ORDER THAT REQUIRED INSPECTION
 CAN BE MADE.

NOTE:
 Contractor shall verify outlet elevation on existing front sewer
 in field.

LANCASTER BLDG. DIST. NO. 6

- NOTE:
- PROVEY STAKES ON THE PROPERTY LINE OR PROPERTY LINES PRODUCED AT RIGHT ANGLES TO THE SEWER LINE AT THE CENTER LINE OF EACH MANHOLE.
 - NO REPRESENTATIVE OF THE COUNTY ENGINEER WILL SURVEY OR LAY OUT ANY PORTION OF THE WORK.
 - THE PRIVATE ENGINEER SHALL FURNISH THE COUNTY ENGINEER WITH GRADE SHEETS AND STATIONING FOR ALL HOUSE LATERALS AND Y BRANCHES AND SHALL PROVIDE STAKES FOR THEM AT THEIR PROPER LOCATIONS WITH STATIONING PLAINLY MARKED. ALL HOUSE LATERALS SHALL BE CONSTRUCTED IN A STRAIGHT ALIGNMENT AT RIGHT ANGLES FROM THE MAIN LINE SEWER EXCEPT AS SHOWN ON THE PLANS. HOUSE-SIDE-TO-ROAD-OR-DRIVEWAY-SIDE-TO-ROAD-OR-DRIVEWAY-SIDE OF SEWER TRUNK OR "WITH THE MAIN AND SEWER, ANY CHANGE OF ALIGNMENT SHALL BE REQUESTED BY WRITING BY THE PRIVATE ENGINEER.
 - THE PRIVATE ENGINEER SHALL FURNISH THE HOUSE LATERAL DEPTH AT THE PROPERTY LINE BELOW THE TOP OF CURB ELEVATION FOR EACH HOUSE LATERAL ON THE GRADE SHEET.
 - NO REVISIONS SHALL BE MADE IN THESE PLANS WITHOUT THE APPROVAL OF THE COUNTY ENGINEER.
 - THE CONTRACTOR SHALL NOTIFY THE CONSTRUCTION DIVISION BY TELEPHONE, MADISON 5-4747, EXT. 1938, AT LEAST TWENTY-FOUR HOURS BEFORE STATING ANY WORK UNDER THE CONTRACT.
 - MANHOLES SHALL BE BRICK SEWER STRUCTURES PER S-5 - PRECAST CONCRETE MANHOLES PER S-5 OR S-6 MAY BE USED AS AN ALTERNATE IN LOCATIONS APPROVED BY THE COUNTY ENGINEER.
 - USE STANDARD MANHOLE FRAMES AND COVERS, S-18, EXCEPT AS NOTED.
 - MANHOLE TOPS IN UNIMPROVED RIGHTS-OF-WAY TO BE SIX INCHES ABOVE FINISHED GRADE.
 - USE EXTRA STRENGTH PIPE, ALL PIPE IS STANDARD DEPTH EXCEPT AS NOTED.
 - USE COMBINATION MECHANICAL COMPRESSION JOINTS FOR ALL V.C.P. JOINTS PER SPECS., SECT. 34, 4.1.19.
 - WHERE FIVE GROUND WATERS IS ENCOUNTERED DURING THE CONSTRUCTION OF THE SEWER, THE V.C.P. JOINTS SHALL BE OF THE TYPE RECOMMENDED PER SPECS., SECT. 34 & 40, OR MECHANICAL COMPRESSION JOINTS PER SPECS., SECT. 34.
 - IF A POWER POLE IS WITHIN THREE FEET OF THE SEWER, THE SEWER SHALL BE ENCASED, PER S-2-3, CASE II, TWO FEET ON EITHER SIDE FROM THE POINT OF INTERFERENCE.
 - IF DURING THE COURSE OF CONSTRUCTION IT IS DETERMINED THAT THERE IS LESS THAN FOUR FEET OF COVER OVER THE TOP OF A MAIN LINE OR HOUSE LATERAL V.C.P. SEWER WHICH IS NOT INDICATED ON THE PLANS, THE PIPE SHALL BE ENCASED PER S-2-3, CASE III, UNLESS OTHERWISE APPROVED BY THE COUNTY ENGINEER.
 - HOUSE LATERALS TO BE CONSTRUCTED WITH INVERTS AT PROPERTY LINE... FEET BELOW CURB GRADE EXCEPT AS NOTED.
 - RESURFACE ALL TRENCHES WITHIN PAVED AREAS TO MEET L.A. COUNTY ROAD DEPT. OR CALIFORNIA STATE HIGHWAY REQUIREMENTS UNLESS OTHERWISE NOTED.
 - FOR ALLOWABLE LEAKAGE TEST USE FORMULA NO. 1000... SPECS., SECT. 34.
 - ALL STATE AND LOCAL TRENCH SAFETY ORDERS SHALL BE RIGIDLY ENFORCED.

NOTICE TO CONTRACTOR

The existence and location of any underground utility pipes or structures shown on these plans are obtained by a search of the available records. To the best of our knowledge there are no existing utilities except as shown on these plans. The Contractor is required to take all precautionary measures to protect the utility lines shown and any other lines not of record or not shown on these plans.

COLLECT CHARGES AS INDICATED

Arthur L. Kander

NO CONNECTIONS FOR THE DISPOSAL OF INDUSTRIAL WASTES SHALL BE MADE TO SEWERS SHOWN ON THESE DRAWINGS WITHOUT WRITTEN PERMISSION FROM THE CHIEF ENGINEER AND GENERAL MANAGER OF THE COUNTY SANITATION DISTRICTS.

TRACT NO 29493
 PRIVATE CONTRACT NO. 7084

W.S. 71
 3 SHEETS, 5 PAGES
 SCALE: VERT. 1" = 4' HORIZ. 1" = 40'
 FEBRUARY, 1965

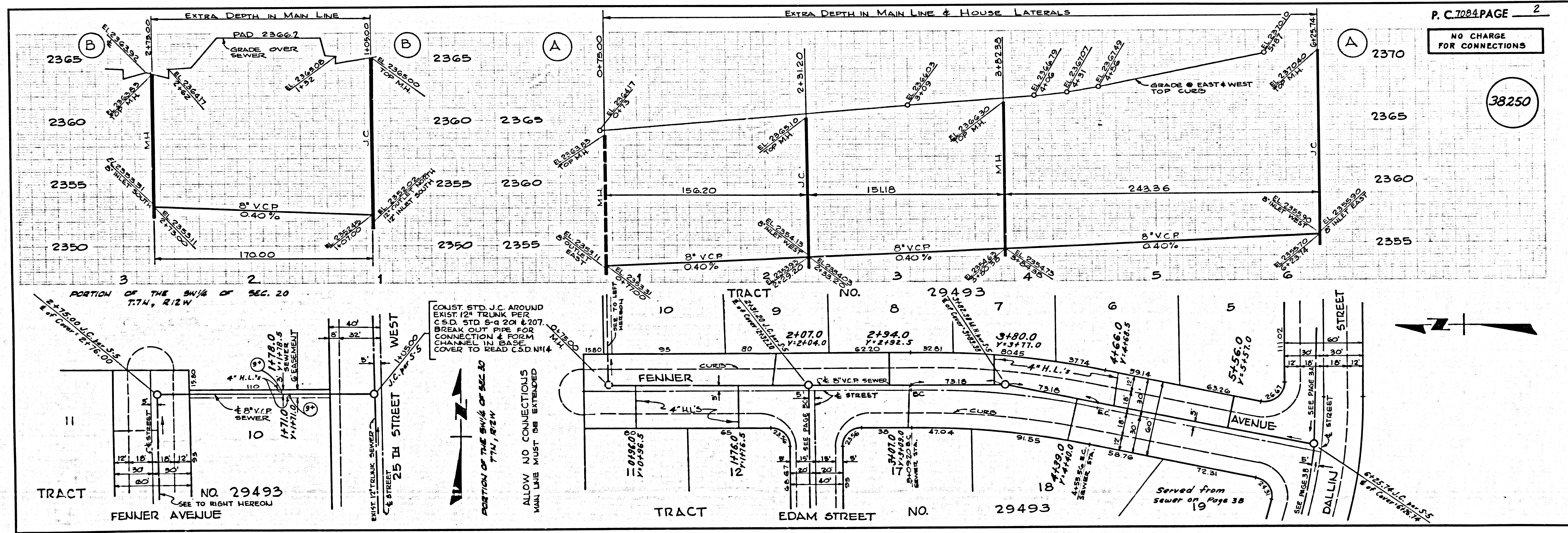
38249

PREPARED IN THE OFFICES OF
 PARAMOUNT ENGINEERING CO.
 13609 VICTORY BOULEVARD
 VAN ALLEN, CALIFORNIA
 REG. C. E. NO. 13212

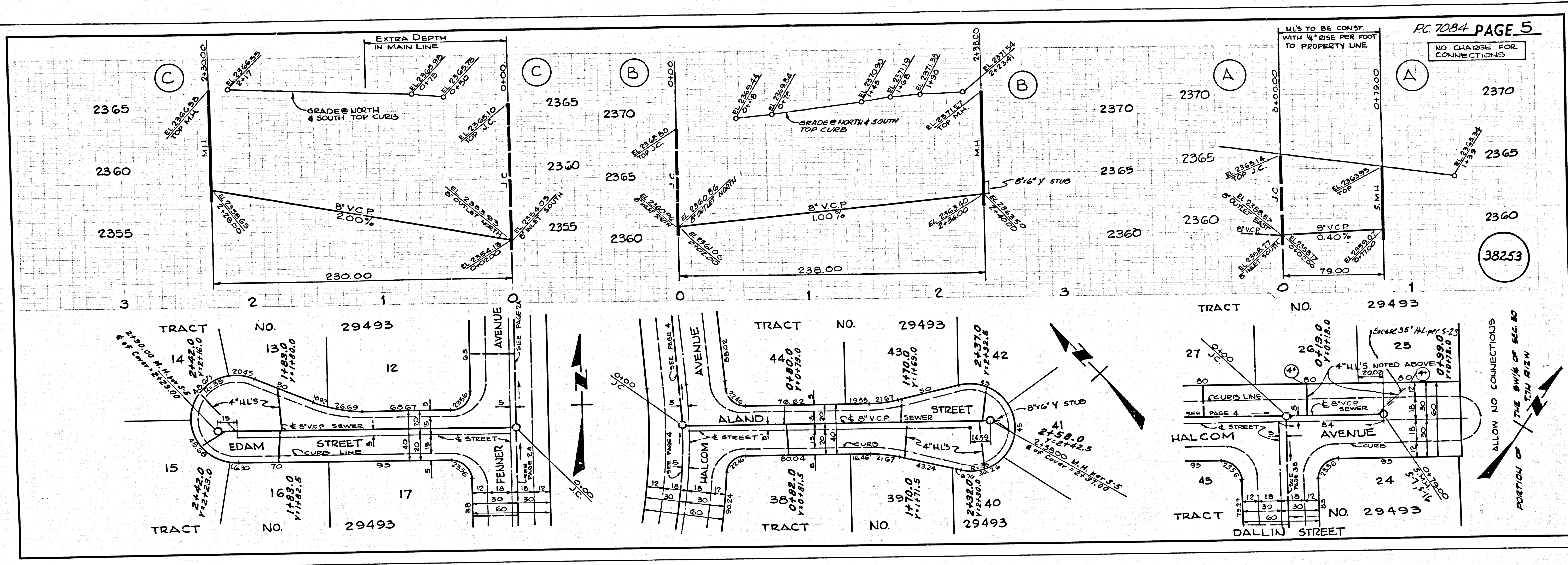
FOR LEGEND SEE PLAN NO. S-1

NOTE:
 GRADES TO WHICH THIS IMPROVEMENT IS TO BE CONSTRUCTED ARE SHOWN ON PLANS AND PROFILES. GRADE POINTS FOR TOP OF CURBS, CENTER LINE OF STREETS, OR CENTER LINE OF ALLEYS ARE SHOWN BY CIRCLES ON PROFILES. AT ALL POINTS BETWEEN DESIGNATED POINTS THE GRADE SHALL BE ESTABLISHED SO AS TO CONFORM TO A STRAIGHT LINE DRAWN BETWEEN SAID DESIGNATED POINTS. THIS DRAWING AND THE DATA HEREON ARE HEREBY MADE A PART OF THE SPECIFICATIONS. REVISIONS ARE IN PENCIL ABOVE U.S.C. & G.S. SEA LEVEL DATUM OF 1929. BEFORE WORK CAN BE STARTED, THE CONTRACTOR MUST OBTAIN A PERMIT TO EXCAVATE IN COUNTY STREETS FROM THE L.A. COUNTY ROAD DEPT., DISTRICT OFFICE NO. 5, AND A PERMIT TO THE COUNTY ENGINEER, ROOM 305, COUNTY ENGINEERING BUILDING, 100 WEST SECOND STREET OR... REGIONAL OFFICE, SUPPLEMENT TO COVER THE COST OF CONSTRUCTION INSPECTION AND RECORD PLANS. APPROVAL OF THIS PLAN BY THE COUNTY OF LOS ANGELES DOES NOT CONSTITUTE A REPRESENTATION AS TO THE ACCURACY OF THE LOCATION OF OR THE EXISTENCE OR NON-EXISTENCE OF ANY UNDERGROUND UTILITY PIPE, OR STRUCTURE WITHIN THE LIMITS OF THE PROJECT. THIS NOTE APPLIES TO ALL PAGES. IF WORK IS TO BE DONE IN A STATE HIGHWAY, A PERMIT MUST BE OBTAINED FROM THE STATE OF CALIFORNIA, DIVISION OF HIGHWAYS, 120 SOUTH SPRING STREET, LOS ANGELES, CALIFORNIA.

COUNTY OF LOS ANGELES, CALIFORNIA
 JOHN A. LAMBIE, COUNTY ENGINEER
 J. D. PARKHURST, CHIEF ENGINEER
 CO. SAN. DIST. NO. 6
 APPROVED BY: [Signature] ASSISTANT SANITATION ENGINEER
 APPROVED BY: [Signature] OFFICE ENGINEER
 SUBMITTED BY: [Signature] REGIONAL ENGINEER
 CHECKED BY: Ralph A. Schep 10/20/65
 REG. C. E. NO. 13421
 J. N. 0363.84



COPIES ON TOLIST



PC 7084 PAGE 5
NO CHARGE FOR CONNECTIONS

38253

4307.09

PAGE