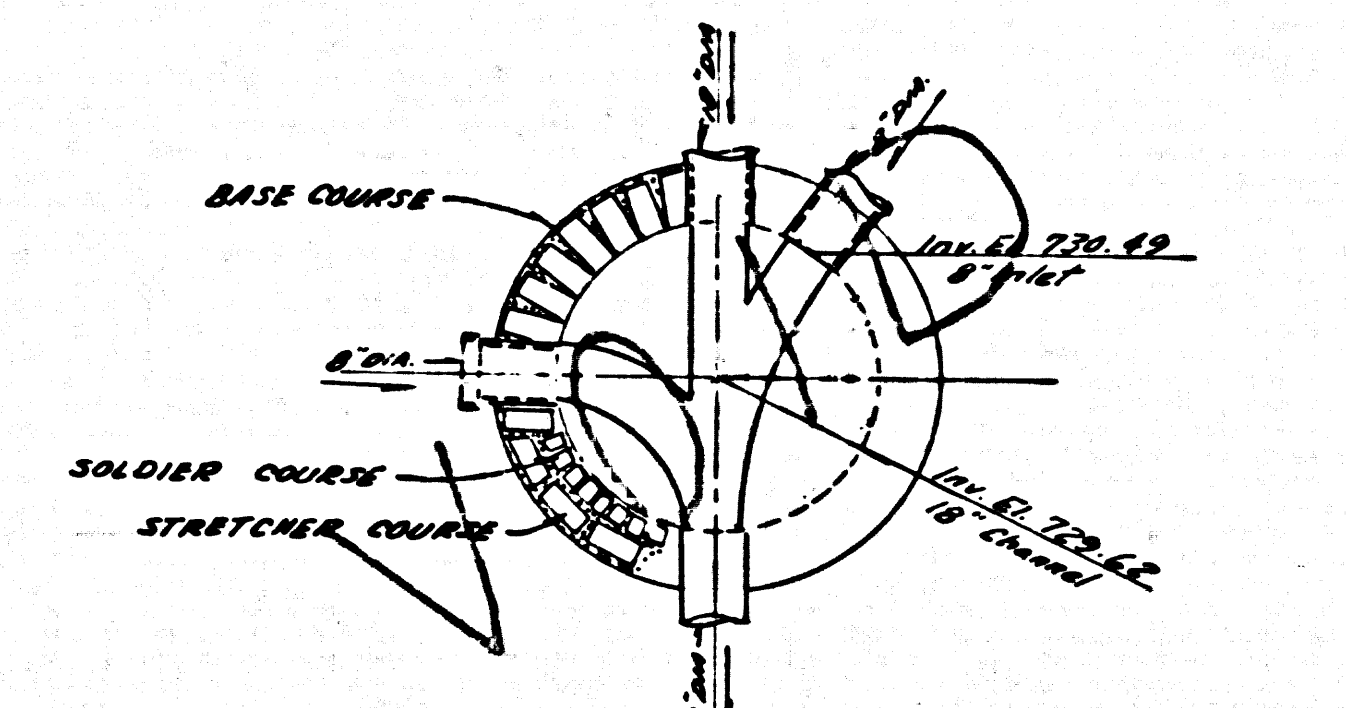
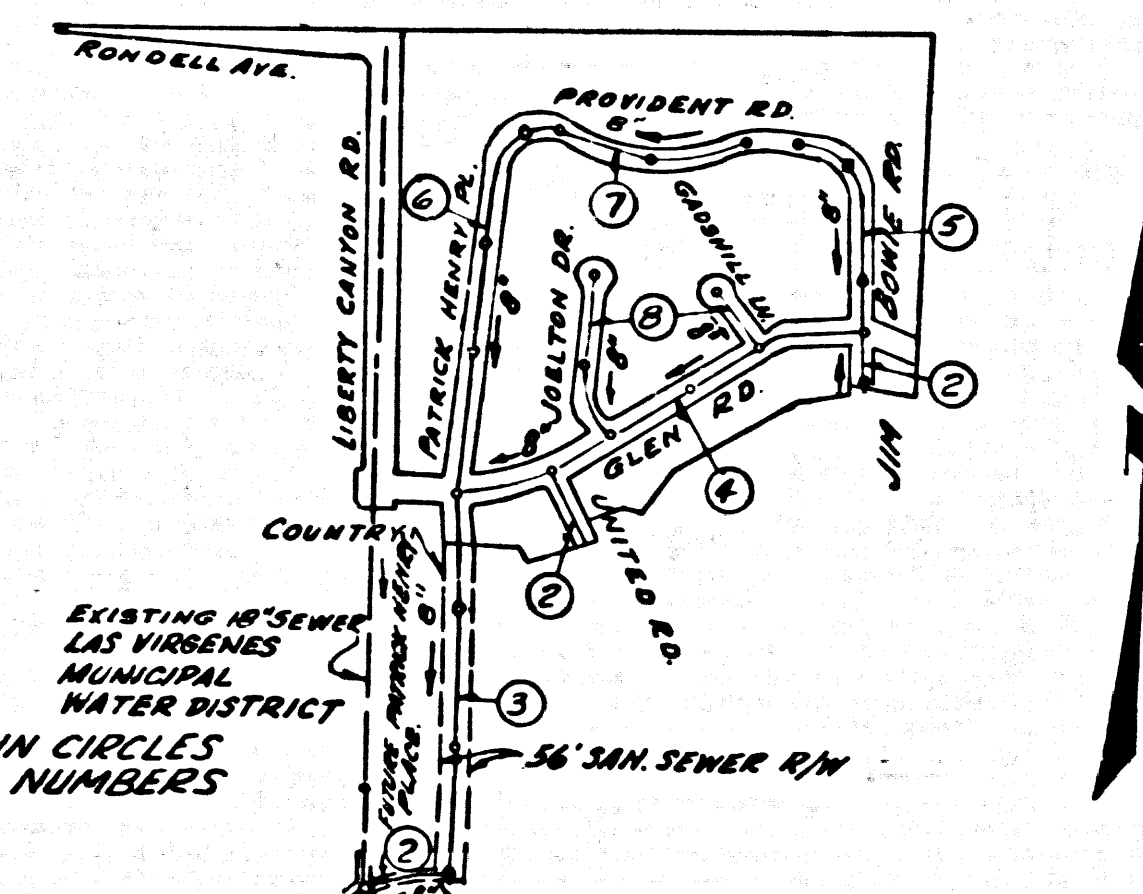


B.M. SY-5613 ELEV. 843.027
 CHIS. SQ. @ S.E. COR. C.B. (DROPPINLET)
 ON C/L VENTURA BLVD @ STA
 203+72 ± 3.71. N. LAS VIRGENES RD.
 MALIBU QUAD. 19 60



DETAIL M.H. 0+87.29 (Page 2-A)
 EXIST. M.H. - 8" DIA. INLET MANHOLE
 AT POINT BASE OF M.H. COVER



INDEX MAP
 TRACT NO. 29674
 P.C. 7097
 SCALE 1" = 600'

ISSUE NO PERMITS PRIOR TO COMPLETION OF
 LAS VIRGENES MUNICIPAL WATER DISTRICT
 TRUNK SEWER SYSTEM.

REVISION 3-2-65
 Page 2-A Extend 8" V.C.P. SW/4
 397' to join as-built
 Trunk Sewer Constn.
 J.C. around Trunk
 Los Angeles County Engineer,
 Approved by *[Signature]*
 Las Virgenes Municipal Water District
 Approved by *[Signature]*

DOUBLE SCALE
 CALABASAS BLDG. DIST. NO. 91

- NOTES:
1. PROVIDE STAKES ON THE PROPERTY LINE OR PROPERTY LINES PRODUCED AT RIGHT ANGLES TO THE SEWER LINE AT THE CENTER LINE OF EACH MANHOLE.
 2. NO REPRESENTATIVE OF THE COUNTY ENGINEER WILL SURVEY OR LAY OUT ANY PORTION OF THE WORK.
 3. THE PRIVATE ENGINEER SHALL FURNISH THE COUNTY ENGINEER WITH GRADE SHEETS AND STATIONING FOR ALL HOUSE LATERALS AND Y BRANCHES AND SHALL PROVIDE STAKES FOR THEM AT THEIR PROPER LOCATIONS WITH STATIONING PLAINLY MARKED. ALL HOUSE LATERALS SHALL BE CONSTRUCTED IN A STRAIGHT ALIGNMENT AT RIGHT ANGLES FROM THE MAIN LINE SEWER EXCEPT AS SHOWN ON THE PLANS. HOUSE LATERALS FROM CHIMNEYS SHALL NOT HAVE AN ANGLE OF LESS THAN 45° WITH THE MAIN LINE SEWER. ANY CHANGE IN ALIGNMENT SHALL BE REQUESTED BY WRITING BY THE PRIVATE ENGINEER.
 4. THE PRIVATE ENGINEER SHALL FURNISH THE HOUSE LATERAL INVERT AT THE PROPERTY LINE BELOW THE TOP OF CURB ELEVATION FOR EACH HOUSE LATERAL ON THE GRADE SHEET.
 5. NO REVISIONS SHALL BE MADE IN THESE PLANS WITHOUT THE APPROVAL OF THE COUNTY ENGINEER.
 6. THE CONTRACTOR SHALL NOTIFY THE CONSTRUCTION DIVISION BY TELEPHONE, MADISON 9-4747, EXT. 8153, AT LEAST TWENTY-FOUR HOURS BEFORE STARTING ANY WORK UNDER THIS CONTRACT.
 7. MANHOLES SHALL BE BRICK SEWER STRUCTURES PER S. 23 - PRECAST CONCRETE MANHOLES PER S. 4 - OR S. 6 - MAY BE USED AS AN ALTERNATE IN LOCATIONS APPROVED BY THE COUNTY ENGINEER.
 8. USE STANDARD MANHOLE FRAMES AND COVERS, S. 12 - EXCEPT AS NOTED.
 9. MANHOLE TOPS IN UNIMPROVED AREAS OR WAYS TO BE SIX INCHES ABOVE FINISHED GRADE.
 10. USE EXTRA STRENGTH PIPE, ALL PIPE IS STANDARD DEPTH EXCEPT AS NOTED.
 11. USE GEMMETT-METAL MECHANICAL COMPRESSION JOINTS FOR ALL V.C.P. JOINTS PER SPEC., SECT. 36 & 41.49
 12. WHEN OVER-UNDER OR UNDER-OVER CONDITIONS OCCUR IN THE CONSTRUCTION OF SEWER LATERALS PER S. 23 OR S. 24 -
 13. IF A POWER POLE IS WITHIN THREE FEET OF THE SEWER, THE SEWER SHALL BE ENCASED, PER S. 23 - TWO FEET ON EITHER SIDE FROM THE POINT OF INTERFERENCE.
 14. IF DURING THE COURSE OF CONSTRUCTION IT IS DETERMINED THAT THERE IS LESS THAN FOUR FEET OF COVER OVER THE TOP OF A MAIN LINE OR HOUSE LATERAL V.C.P. SEWER WHICH IS NOT INDICATED ON THE PLANS, THE PIPE SHALL BE ENCASED PER S. 4-173, CASE B, UNLESS OTHERWISE APPROVED BY THE COUNTY ENGINEER.
 15. HOUSE LATERALS TO BE CONSTRUCTED WITH INVERTS AT PROPERTY LINE... 6" FEET BELOW CURB GRADE EXCEPT AS NOTED.
 16. RESURFACE ALL TRENCHES WITHIN PAVED AREAS TO MEET L.A. COUNTY ROAD DEPT. OR CALIFORNIA STATE HIGHWAY REQUIREMENTS IN ACCORDANCE WITH PERMITS.
 17. FOR ALLOWABLE LEAKAGE TEST USE FORMULA NO. 2, S. 41 - S. 42 - SPEC., SEC. 54.
 18. ALL STATE AND LOCAL TRENCH SAFETY ORDERS WILL BE RIGIDLY ENFORCED
- (A) AN ACCEPTABLE CERTIFICATION OF COMPACTION TEST RESULTS SHALL BE SUBMITTED TO THE CONSTRUCTION DIVISION. COMPACTION TESTS ARE TO BE MADE IN ACCORDANCE WITH ASTM STANDARD METHOD OF TEST D 698 - 67.
- (B) NO CONSTRUCTION IS PERMITTED IN FILLED AREAS WHERE THE RELATIVE DENSITY OF COMPACTION IS LESS THAN 80%.
- (C) IF THE RELATIVE DENSITY OF COMPACTION IS LESS THAN 80% ALL MAIN LINE AND HOUSE LATERALS SHALL BE ENCASED PER S. 23 - OR HAVE A SPECIAL BASE COURSE PER S. 23, CASE C, SPECIAL CHANGEABLE BASES PER S. 4 - ARE REQUIRED.
- (D) IF THE RELATIVE DENSITY COMPACTION IS 80% OR GREATER, THE SPECIAL PROVISIONS IN (C) ARE NOT REQUIRED.

COLLECT CHARGES
 AS INDICATED
[Signature] 11/23/64

PROFILE ALIGNMENT AND GRADE OF P.C. 7097
 SANITARY SEWERS PAGE 1
 TO BE CONSTRUCTED IN

TRACT No 29674

PRIVATE CONTRACT NO. 7097

W.S. 30
 4 SHEETS, 4 PAGES 37512

SCALE: VERT. 1" = 4' HORIZ. 1" = 40'

NOVEMBER, 1964

PREPARED IN THE OFFICES OF
 McINTIRE & QUIROS INC.

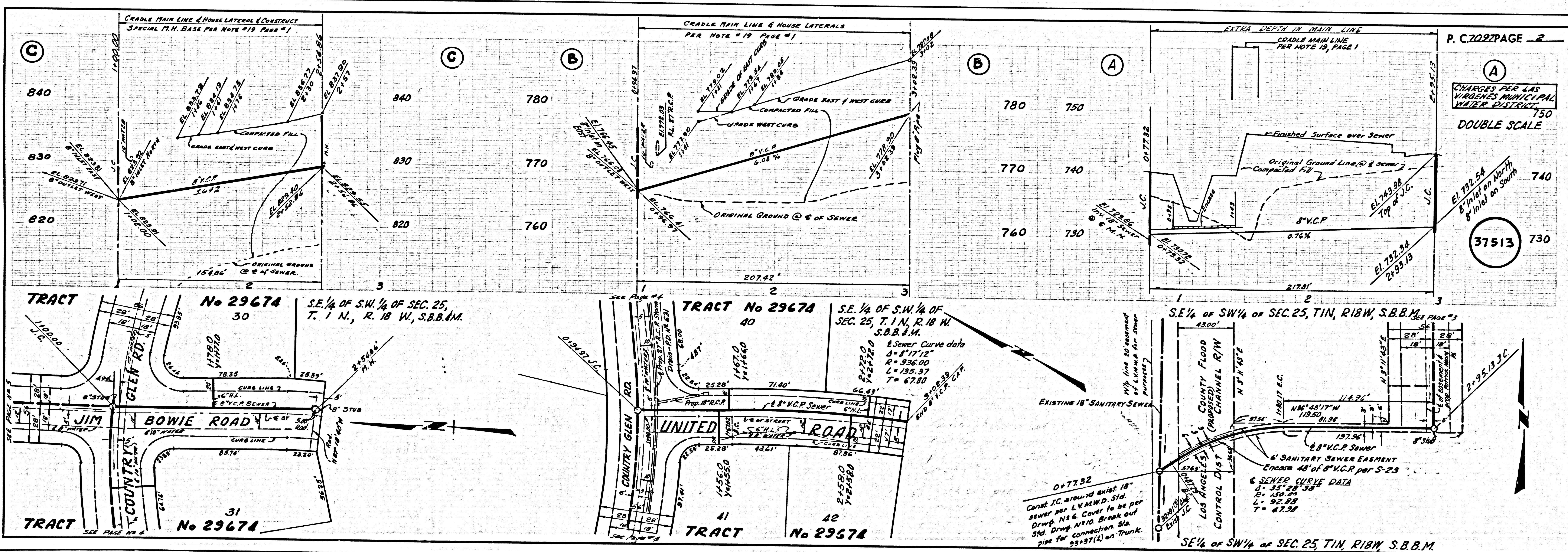
REG. C. E. NO. 11758

FOR LEGEND SEE PLAN NO. S-1

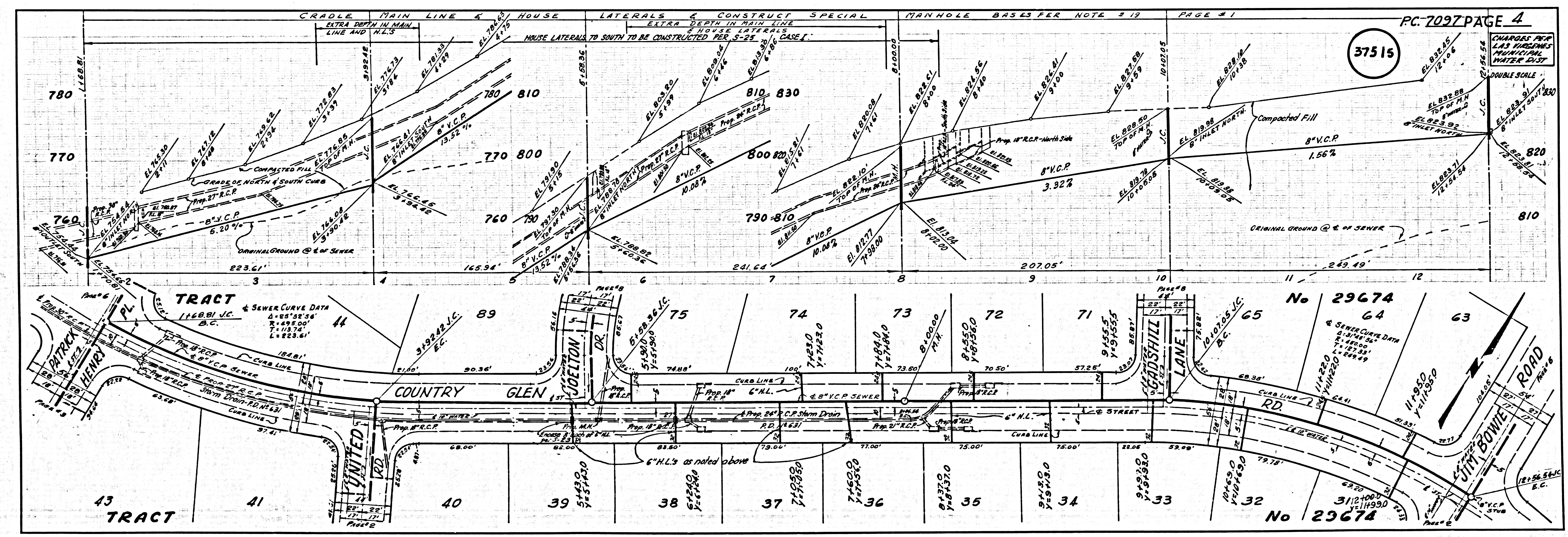
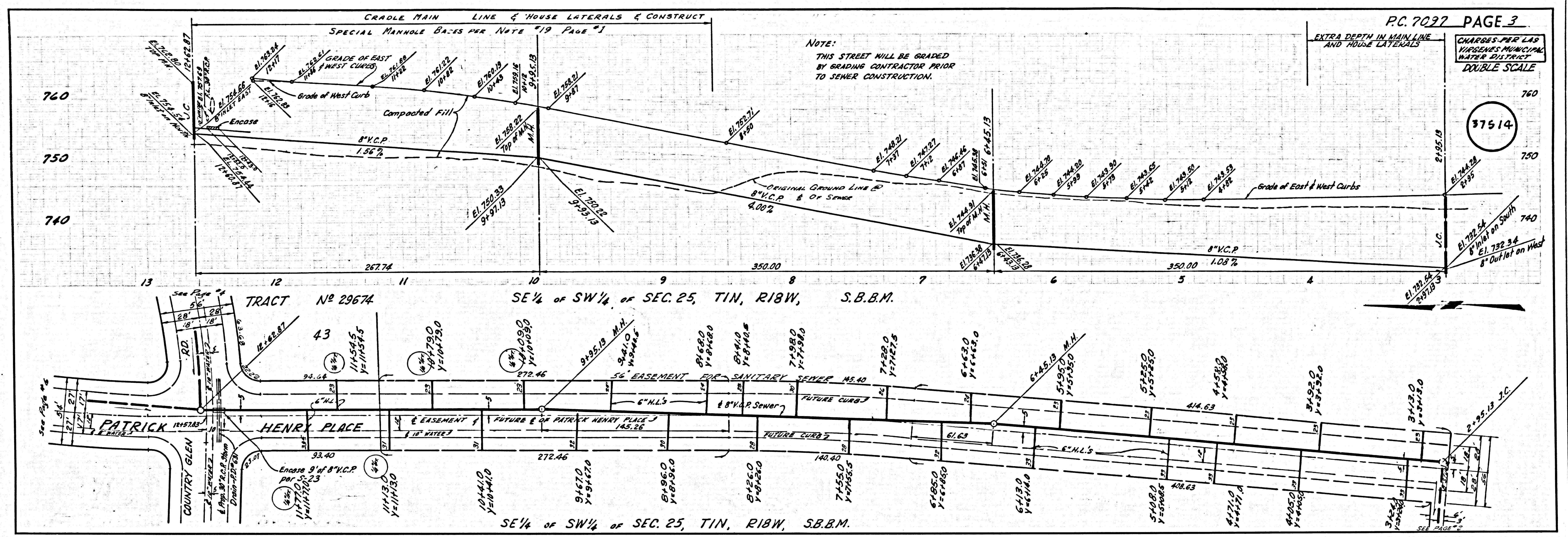
NOTE:
 GRADES TO WHICH THIS IMPROVEMENT IS TO BE CONSTRUCTED ARE SHOWN ON PLANS AND PROFILES. GRADE POINTS FOR TOP OF CURB, CENTER LINE OF STREET, OR CENTER LINE OF ALLEY ARE SHOWN BY CHECKS ON PROFILES. AT ALL POINTS BETWEEN DESIGNATED ELEVATIONS ARE IN FEET ABOVE U.S.C. & G.S. MEAN SEA LEVEL DATUM OF 1929.
 THIS DRAWING AND THE DATA HEREON ARE HEREBY MADE A PART OF THE SPECIFICATIONS.
 NORE SHALL BE CONSIDERED ACCORDING TO STANDARD SPECIFICATIONS DATED JAN. 24, 1964, ON FILE IN THE OFFICE OF THE COUNTY ENGINEER AND SHALL BE PROSECUTED ONLY IN THE PRESENCE OF THE COUNTY ENGINEER.
 BEFORE WORK CAN BE STARTED, THE CONTRACTOR MUST OBTAIN A PERMIT TO LOCATE HIS COUNTY RIGHTS FROM THE L.A. COUNTY ROAD DEPT., DISTRICT OFFICE NO. 3, AND PAY A FEE TO THE COUNTY ENGINEER, ROOM 303, COUNTY ENGINEERING BUILDING, 100 WEST SECOND STREET OF SACRAMENTO, MEXICO ST., REGIONAL OFFICE, SUFFICIENT TO COVER THE COST OF CONSTRUCTION INSPECTION AND RECORD PLANS.
 LOCATION OF OR THE EXISTENCE OR NON-EXISTENCE OF ANY UNDERGROUND UTILITY PIPE, OR STRUCTURE WITHIN THE LIMITS OF THIS PROJECT, THIS NOTE APPLIES TO ALL PAGES.
 IF WORK IS TO BE DONE IN A STATE HIGHWAY, A PERMIT MUST BE OBTAINED FROM THE STATE OF CALIFORNIA, DIVISION OF HIGHWAYS, 120 SOUTH BRINK STREET, LOS ANGELES, CALIFORNIA.

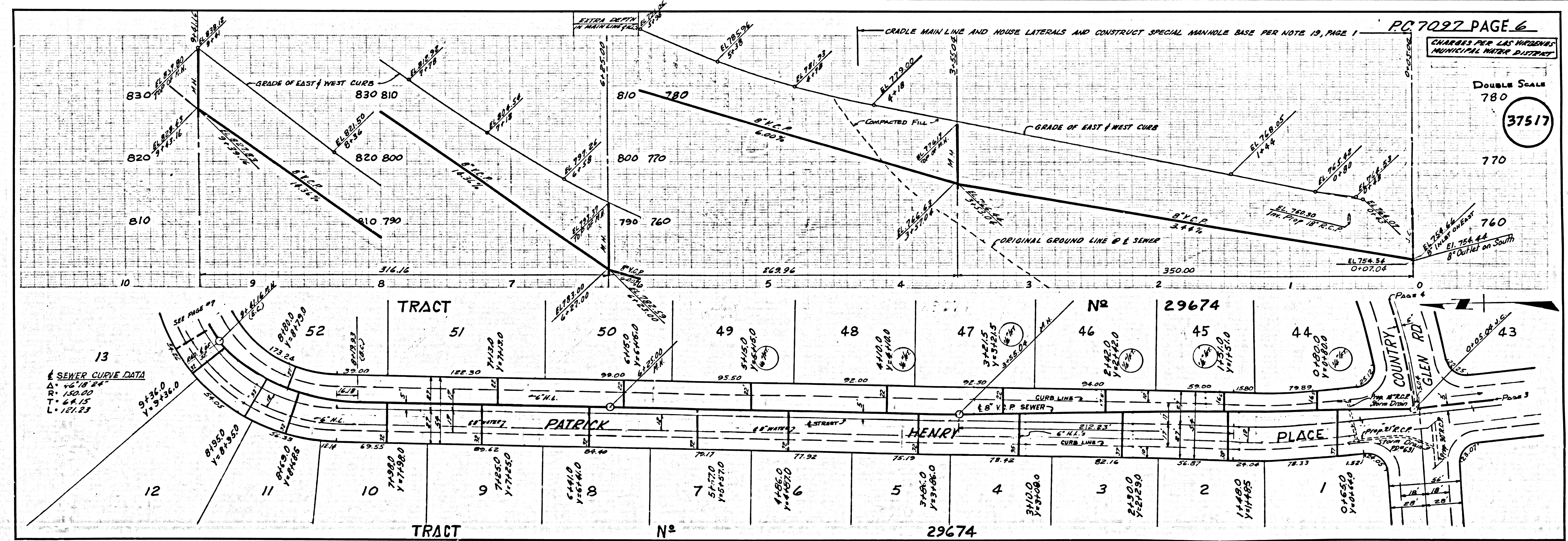
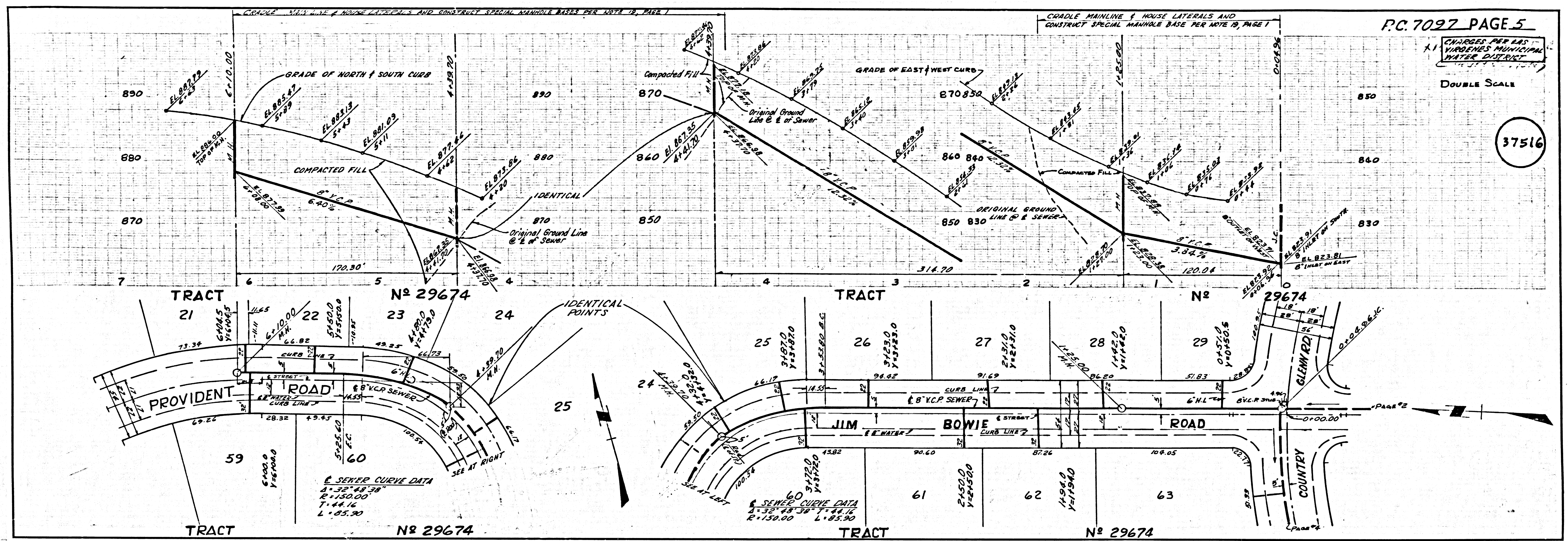
COUNTY OF LOS ANGELES, CALIFORNIA
 JOHN A. LAMBIE, COUNTY ENGINEER LAS VIRGENES MUNICIPAL WATER DISTRICT
 APPROVED BY *[Signature]* ASSISTANT SANITATION ENGINEER
 APPROVED BY *[Signature]* OFFICE ENGINEER
 SUBMITTED BY *[Signature]* TRUNK SEWERS & SEWER TREATMENT FACILITIES ARE SCHEDULED FOR OPERATION IN MAY 1965.
 CHECKED BY *[Signature]* M.C. NO. 15652Y

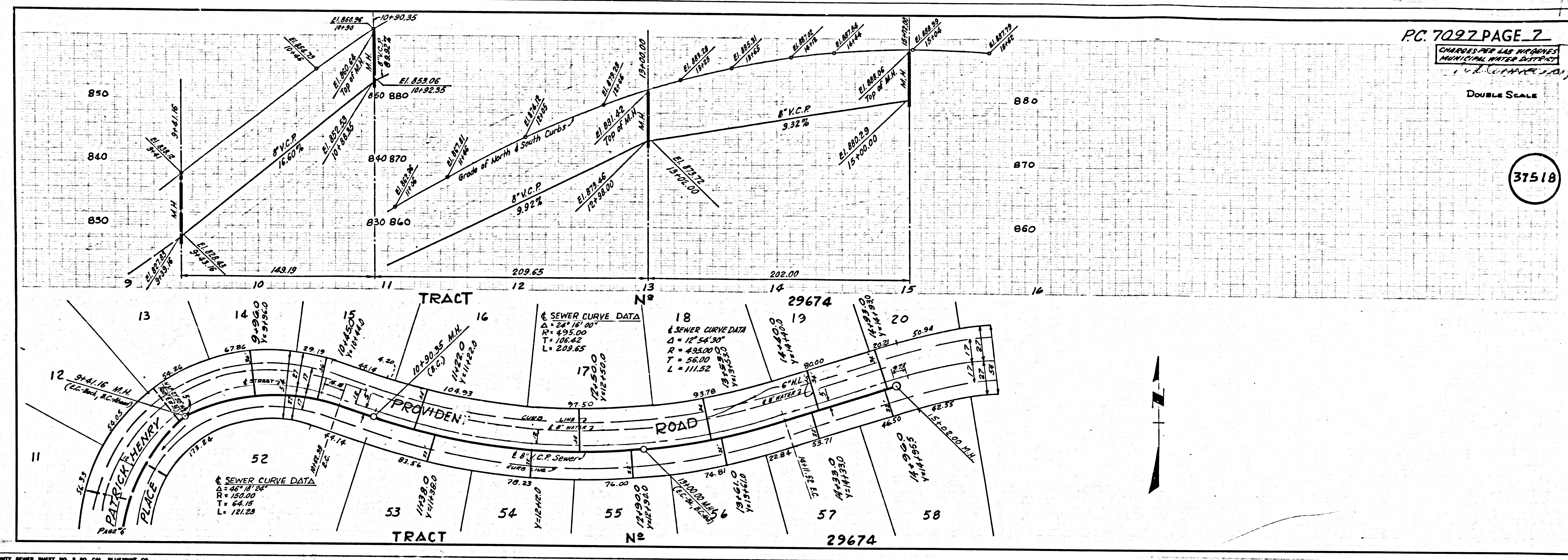
J.N. 0363.96



846 17113 L.A. COUNTY SEWER SHEET NO. 3 SOUTHERN CALIFORNIA BLUEPRINT CO. LA 887







L.A. COUNTY SEWER SHEET NO. 3 80 CAL. BLUEPRINT CO.

