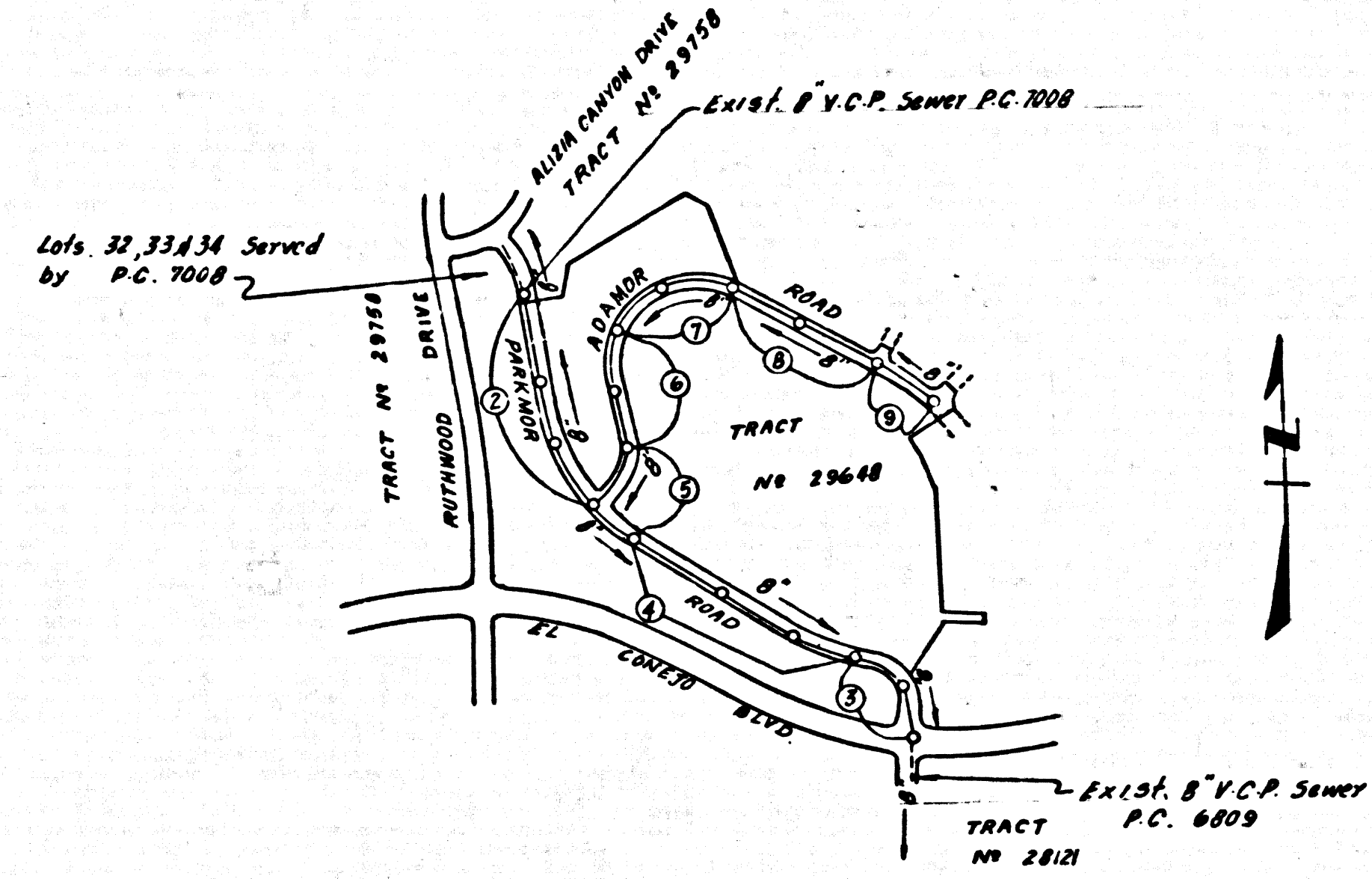


B.M. SY 5588 ELEV. 770.859
 Set 14' 0" in conc. base of light stand
 (flood light) in mark. lot of Billingsley
 Steak Ranch 33' W & 2320' S of int.
 Ventura Blvd & Las Virgenes Road
 MALIBU QUAD. 19 60



INDEX MAP
 TRACT No 29648
 P.C. 7098
 Scale: 1" = 600'

DOUBLE SCALE
 CALABASAS BLDG. DIST. NO. 9.1

PROFILE ALIGNMENT AND GRADE OF P.C. 7098
 SANITARY SEWERS PAGE 1

TO BE CONSTRUCTED IN
 TRACT No 29648
 PRIVATE CONTRACT NO. 7098

W.S. 90
 5 SHEETS, 9 PAGES
 SCALE: VERT. 1" = 8' HORIZ. 1" = 40' APRIL, 1964 (37084)
 PREPARED IN THE OFFICES OF
 DEVELOPMENT CONSULTANTS INC.
 ENGINEERING DIVISION
 BY: J. J. Skand
 REG. C. E. NO. 9553

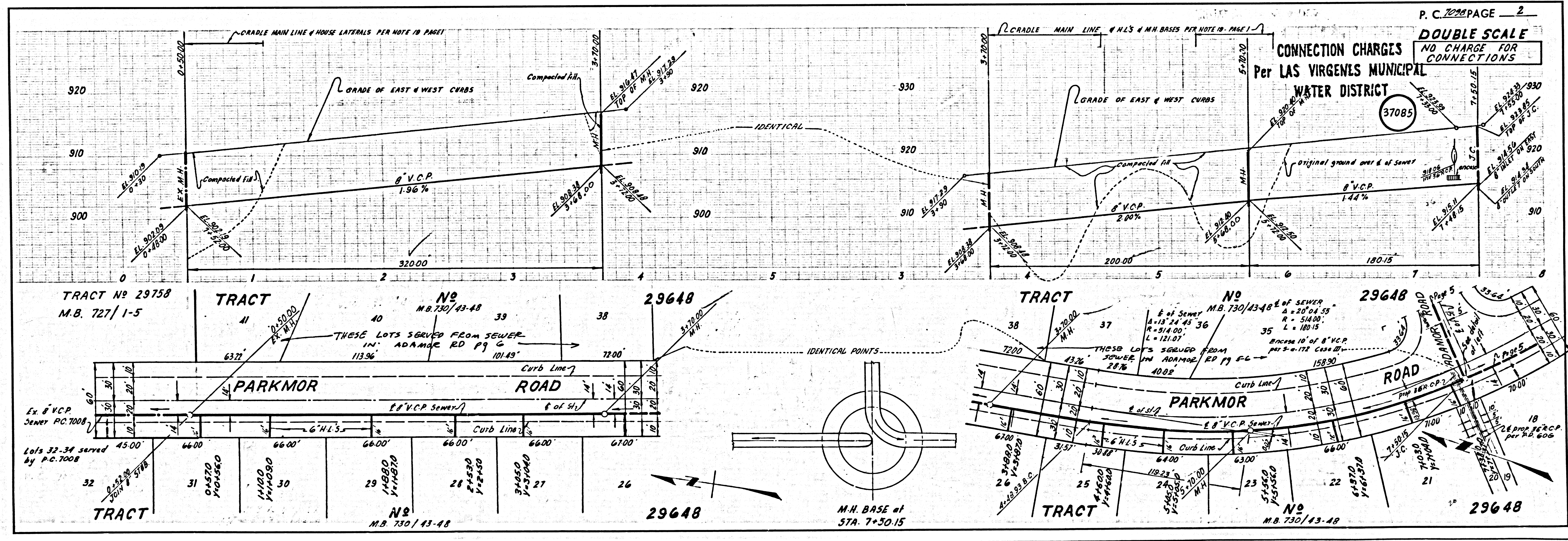
- NOTE:
- PROVIDE STAKES ON THE PROPERTY LINE OR PROPERTY LINES PRODUCED AT RIGHT ANGLES TO THE SEWER LINE AT THE CENTER LINE OF EACH MANHOLE.
 - NO REPRESENTATIVE OF THE COUNTY ENGINEER WILL SURVEY OR LAY OUT ANY PORTION OF THE WORK.
 - THE PRIVATE ENGINEER SHALL FURNISH THE COUNTY ENGINEER WITH GRADE SHEETS AND STATIONING FOR ALL HOUSE LATERALS AND Y BRANCHES AND SHALL PROVIDE STAKES FOR THEM AT THEIR PROPER LOCATIONS WITH STATIONING PLAINLY MARKED. ALL HOUSE LATERALS SHALL BE CONSTRUCTED IN A STRAIGHT ALIGNMENT AT RIGHT ANGLES FROM THE MAIN LINE SEWER EXCEPT AS SHOWN ON THE PLANS. HOUSE LATERALS FROM CHIMNEYS SHALL NOT HAVE AN ANGLE OF LESS THAN 45° WITH THE MAIN LINE SEWER. ANY CHANGE IN ALIGNMENT SHALL BE REQUESTED IN WRITING BY THE PRIVATE ENGINEER.
 - THE PRIVATE ENGINEER SHALL FURNISH THE HOUSE LATERAL OFFSET AT THE PROPERTY LINE BELOW THE TOP OF CURB ELEVATION FOR EACH HOUSE LATERAL ON THE GRADE SHEET.
 - NO REVISIONS SHALL BE MADE IN THESE PLANS WITHOUT THE APPROVAL OF THE COUNTY ENGINEER.
 - THE CONTRACTOR SHALL NOTIFY THE CONSTRUCTION DIVISION BY TELEPHONE, MADISON 9-4747, EXT. 8158, AT LEAST TWENTY-FOUR HOURS BEFORE STARTING ANY WORK UNDER THIS CONTRACT.
 - MANHOLES SHALL BE BRICK SEWER STRUCTURES PER S-104. PRECAST CONCRETE MANHOLES PER S-175 OR S-173 MAY BE USED AS AN ALTERNATE IN LOCATIONS APPROVED BY THE COUNTY ENGINEER.
 - USE STANDARD MANHOLE FRAMES AND COVERS, S-107, EXCEPT AS NOTED.
 - MANHOLE TOPS IN UNIMPROVED PORTS OF WAY TO BE SIX INCHES ABOVE FINISHED GRADE.
 - USE EXTRA STRENGTH PIPE, ALL PIPE IS STANDARD DEPTH EXCEPT AS NOTED.
 - USE CORROSION RESISTANT MECHANICAL JOINTS FOR ALL Y.C.P. JOINTS PER SPEC., SECS. 36 & 40, & 49.
 - UNLESS OTHERWISE SPECIFIED, ALL SEWER LATERALS SHALL BE CONSTRUCTED WITH 8" V.C.P. PER SPEC., SECS. 36 & 40, & 49.
 - IF A POWER POLE IS WITHIN THREE FEET OF THE SEWER, THE SEWER SHALL BE ENCASED, PER S-173, CASE II, TWO FEET ON EITHER SIDE FROM THE POINT OF INTERFERENCE.
 - IF DURING THE COURSE OF CONSTRUCTION IT IS DETERMINED THAT THERE IS LESS THAN FOUR FEET OF COVER OVER THE TOP OF A MAIN LINE OR HOUSE LATERAL Y.C.P. SEWER WHICH IS NOT INDICATED ON THE PLANS, THE PIPE SHALL BE ENCASED PER S-173, CASE III, UNLESS OTHERWISE APPROVED BY THE COUNTY ENGINEER.
 - HOUSE LATERALS TO BE CONSTRUCTED WITH INVERTS AT PROPERTY LINE... FEET BELOW CURB GRADE EXCEPT AS NOTED.
 - RESURFACE ALL TRENCHES WITHIN PAVED AREAS TO MEET L.A. COUNTY ROAD DEPT. OR CALIFORNIA STATE HIGHWAY REQUIREMENTS IN ACCORDANCE WITH PERMITS.
 - FOR ALLOWABLE LEAKAGE TEST USE FORMULA NO. 1000, SPEC. SEC. 54.
 - ALL STATE AND LOCAL TRENCH ORDOS SHALL BE RIGIDLY ENFORCED.
 - CONSTRUCTION IN FILLED AREAS.
 - IN AN ACCEPTABLE CERTIFICATION OF COMPACTION TEST RESULTS SHALL BE SUBMITTED TO THE CONSTRUCTION DIVISION. COMPACTION TESTS ARE TO BE MADE IN ACCORDANCE WITH A.S.T.M. STANDARD METHOD OF TEST D-698-41T. NO CONSTRUCTION IS PERMITTED IN FILLED AREAS WHEN THE RELATIVE DENSITY OF COMPACTION IS LESS THAN 80%.
 - IF THE RELATIVE DENSITY OF COMPACTION IS LESS THAN 80%, ALL MAIN LINE AND HOUSE LATERALS SHALL BE CRACKLE-RESISTANT PER S-104 OR HAVE A SPECIAL BASE COURSE PER S-119, CASE II. SPECIAL MANHOLE BASES PER S-112 ARE REQUIRED.
 - IF THE RELATIVE DENSITY OF COMPACTION IS 80% OR GREATER, THE SPECIAL PROVISIONS IN ICI ARE NOT REQUIRED.
 - WHERE SYSTEMS ARE SHOWN AT THE END OF HOUSE LATERALS, THE LOCATION OF SUCH HOUSE LATERALS SHALL NOT BE MOVED ABOVE THE STATION INDICATED.

NOTE:
 GRADES TO WHICH THIS IMPROVEMENT IS TO BE CONSTRUCTED ARE SHOWN ON PLANS AND PROFILES. GRADE POINTS FOR TOP OF CURBS, CENTER LINE OF STREETS, OR CENTER LINE OF ALLEYS ARE SHOWN BY CIRCLES ON PROFILES AT ALL POINTS BETWEEN DESIGNATED POINTS. THE GRADE SHALL BE ESTABLISHED SO AS TO CONFORM TO A STRAIGHT LINE DRAWN BETWEEN SAID DESIGNATED POINTS. THIS DRAWING AND THE DATA HEREON ARE HEREBY MADE A PART OF THE SPECIFICATIONS. WORK SHALL BE CONSTRUCTED ACCORDING TO STANDARD SPECIFICATIONS DATED 12/22/55, 2882, ON FILE IN THE OFFICE OF THE COUNTY ENGINEER AND SHALL BE PROSECUTED ONLY IN THE PRESENCE OF THE COUNTY ENGINEER. BEFORE WORK CAN BE STARTED, THE CONTRACTOR MUST OBTAIN A PERMIT TO EXCAVATE IN COUNTY STREETS FROM THE L.A. COUNTY ROAD DEPT., DISTRICT OFFICE NO. 100, AND PAY A FEE TO THE COUNTY ENGINEER, ROOM 308, COUNTY ENGINEERING BUILDING, 104 WEST SECOND STREET OR 200 West Los Angeles Valley Regional Office, SUFFICIENT TO COVER THE COST OF CONSTRUCTION INSPECTION AND SECOND PLANS. APPROVAL OF THIS PLAN BY THE COUNTY OF LOS ANGELES DOES NOT CONSTITUTE A REPRESENTATION AS TO THE ACCURACY OF THE LOCATION OF OR THE EXISTENCE OR NON-EXISTENCE OF ANY UNDERGROUND UTILITY PIPE OR STRUCTURE WITHIN THE LIMITS OF THE PROJECT. THIS NOTE APPLIES TO ALL PAGES. IF WORK IS TO BE DONE IN A STATE HIGHWAY, A PERMIT MUST BE OBTAINED FROM THE STATE OF CALIFORNIA, DIVISION OF HIGHWAYS, 120 SOUTH SPRING STREET, LOS ANGELES, CALIFORNIA.

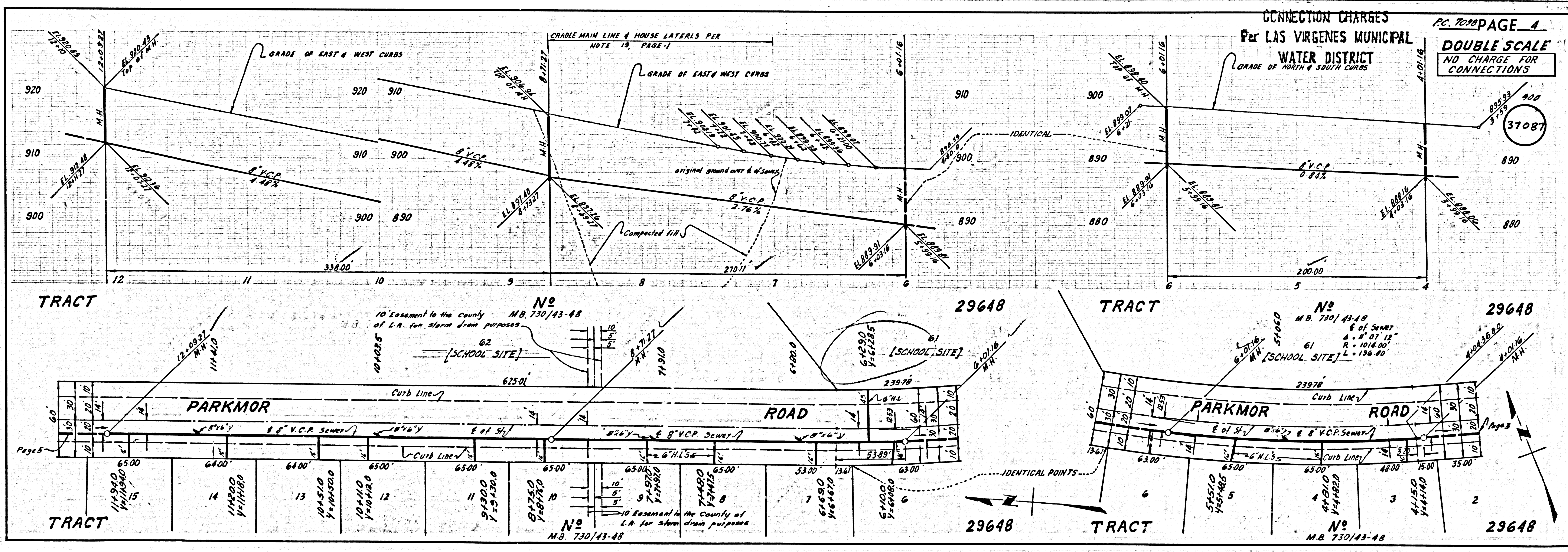
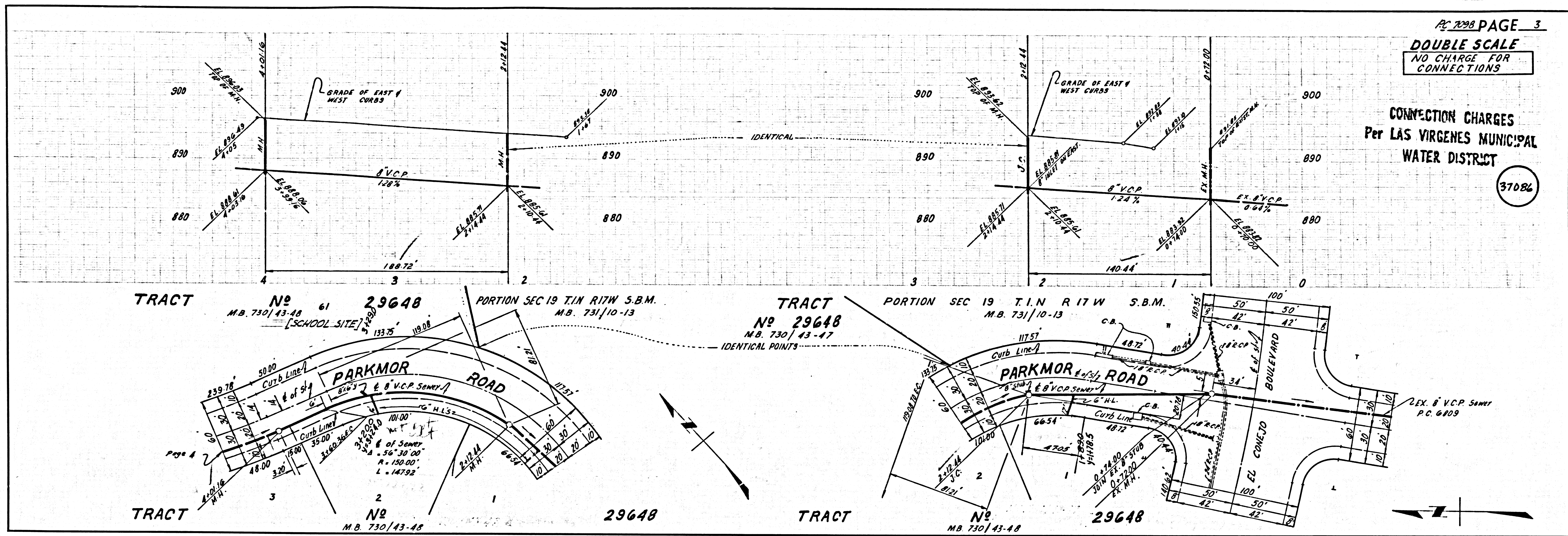
COUNTY OF LOS ANGELES, CALIFORNIA
 JOHN A. LANBIE, COUNTY ENGINEER
 APPROVED BY: [Signature] LAS VIRGENES MUNICIPAL WATER DISTRICT
 ASSISTANT SANITATION ENGINEER
 SUBMITTED BY: [Signature] APPROVED BY: [Signature] OFFICE ENGINEER
 REGIONAL ENGINEER
 REG. C. E. NO. 10829

COLLECT CHARGES AS INDICATED
 [Signature]

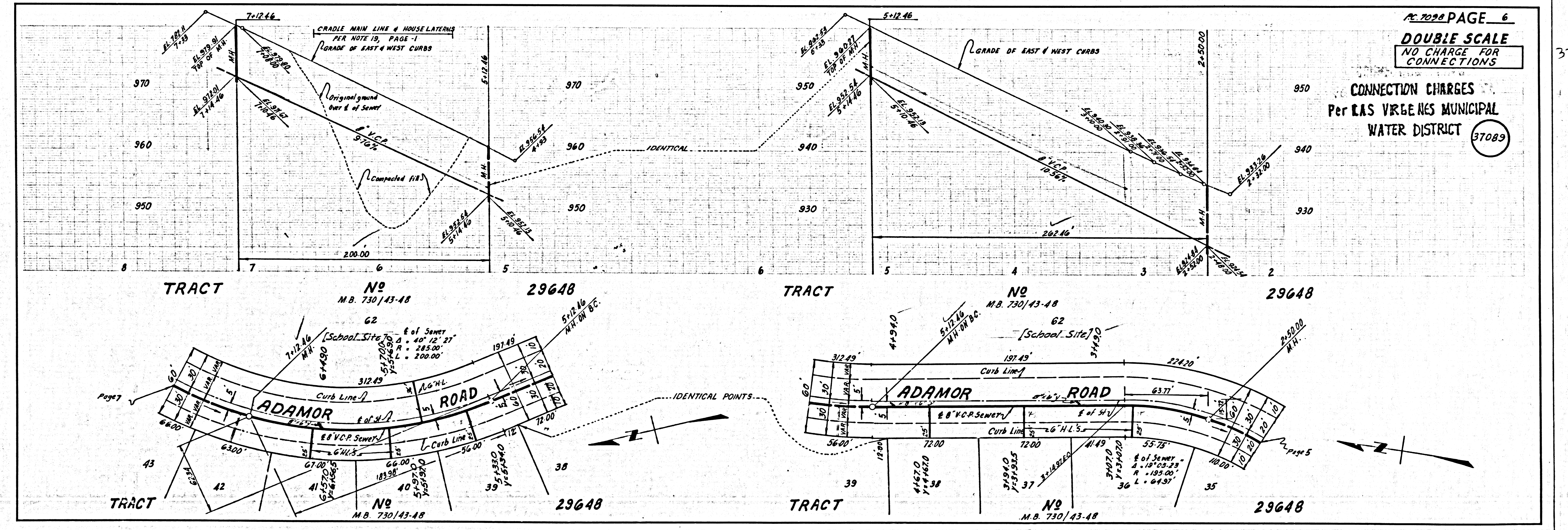
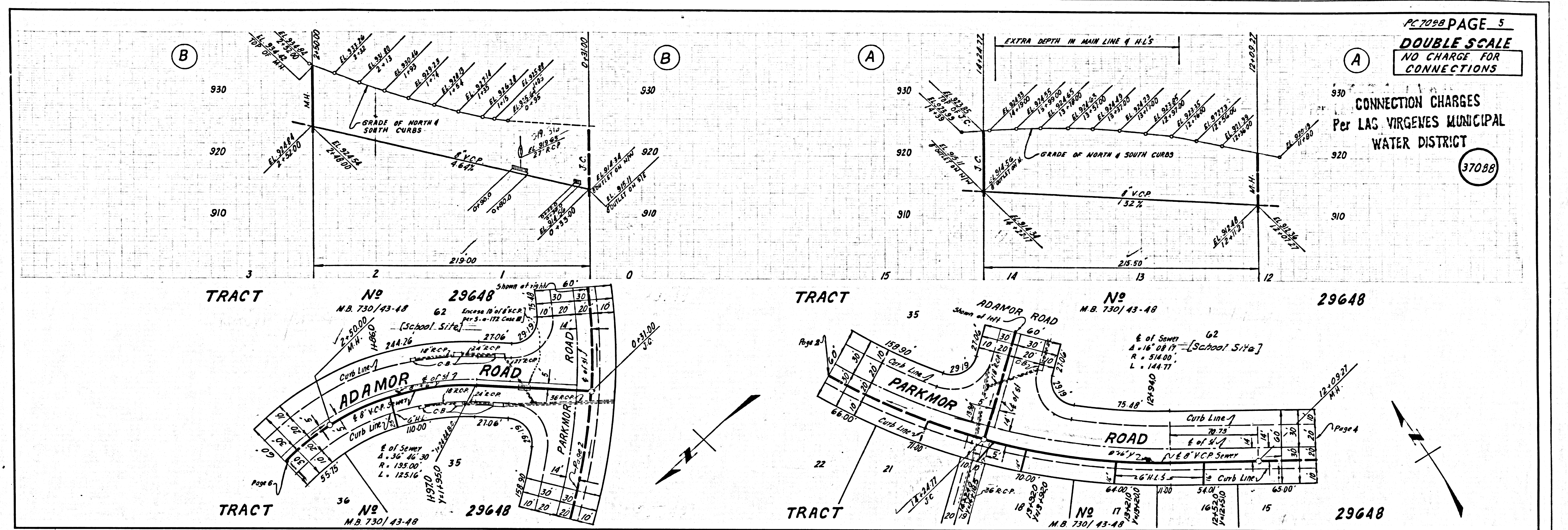
J. N. 0363.97



L.A. COUNTY SEWER & WAT. DIST. NO. 1 SOUTHERN CALIFORNIA BLUEPRINT CO.



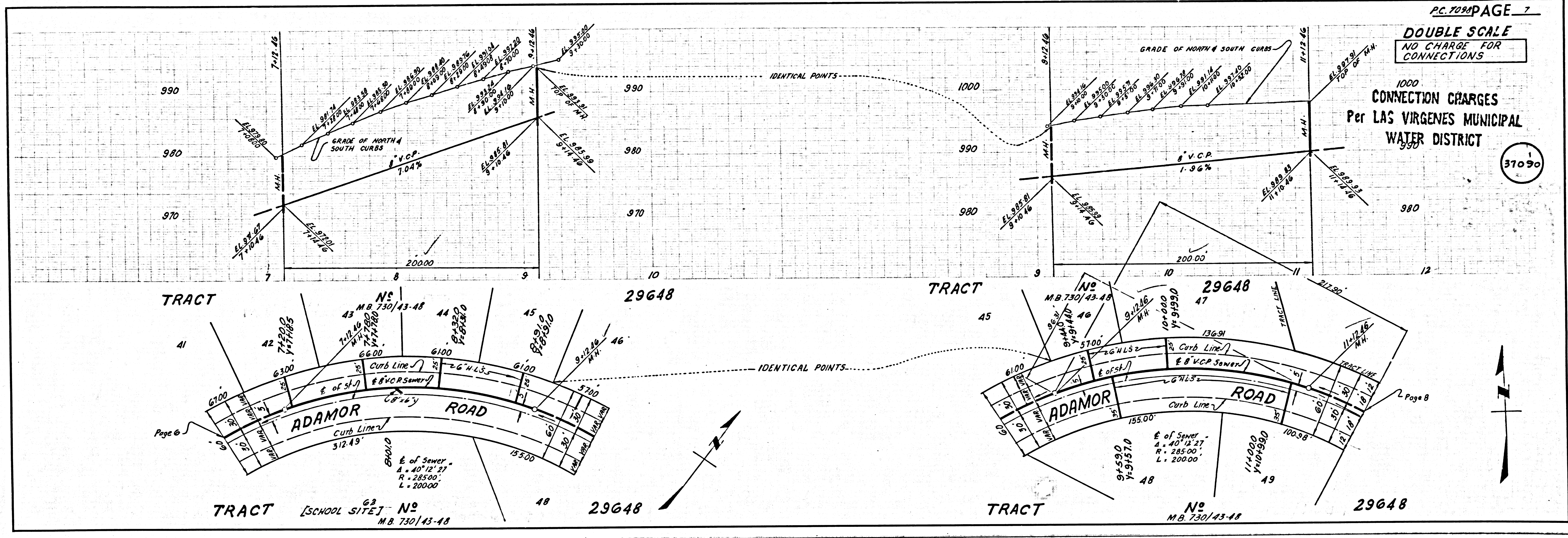
U.S.G.P. 1916 U.S. GOVERNMENT PRINTING OFFICE: 1916



DOUBLE SCALE
NO CHARGE FOR CONNECTIONS

1000 CONNECTION CHARGES
Per LAS VIRGENES MUNICIPAL WATER DISTRICT

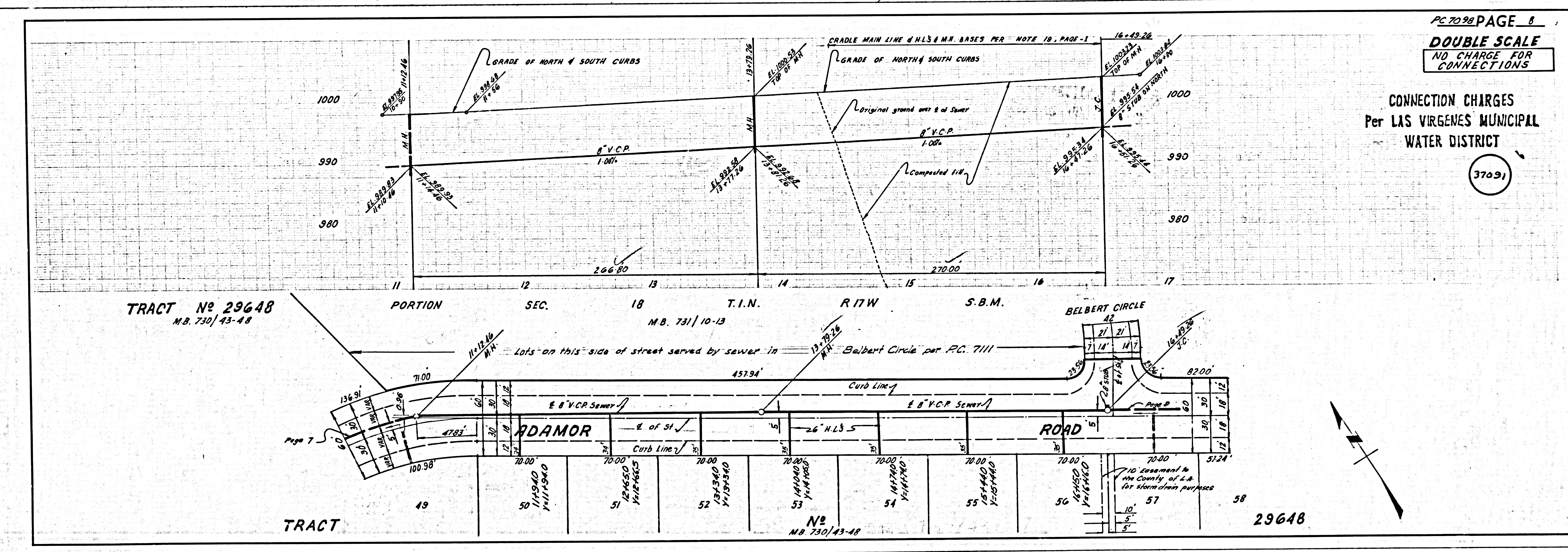
37090



DOUBLE SCALE
NO CHARGE FOR CONNECTIONS

CONNECTION CHARGES
Per LAS VIRGENES MUNICIPAL WATER DISTRICT

37091

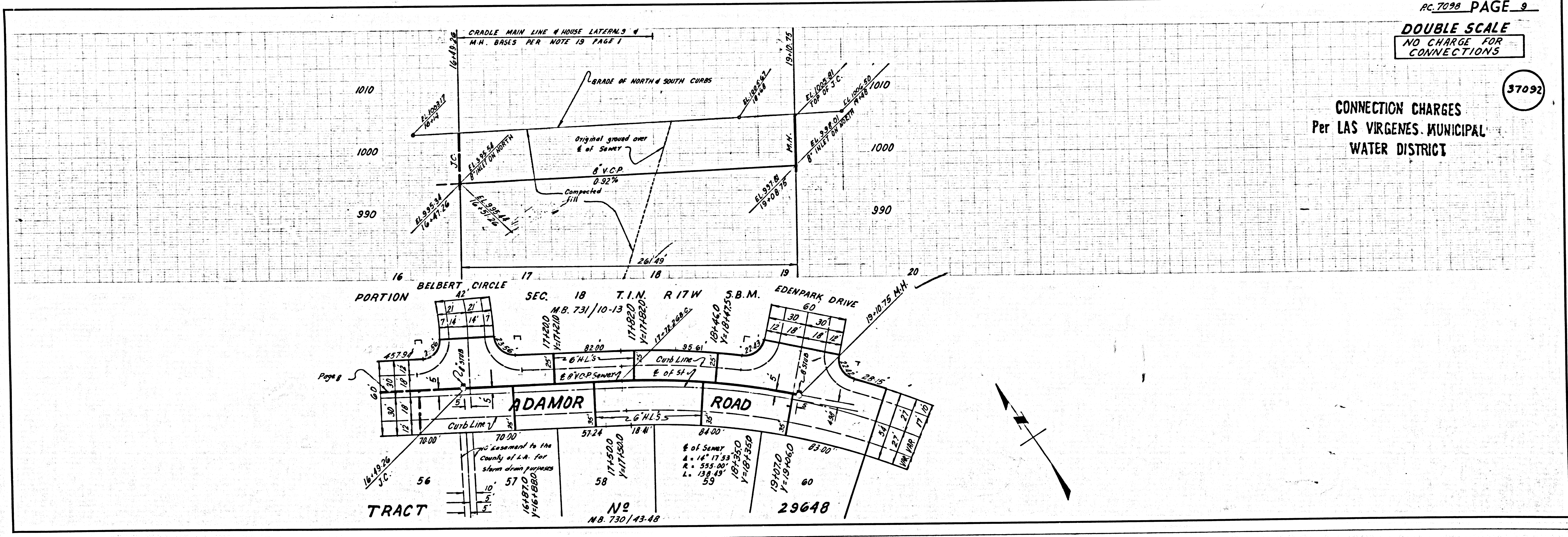


U.S. & THE L.A. COUNTY ENGINEERING DEPT. NO. 2000. BLUEPRINT CO.

DOUBLE SCALE
NO CHARGE FOR
CONNECTIONS

37092

CONNECTION CHARGES
Per LAS VIRGENES MUNICIPAL
WATER DISTRICT



DATE 12/15/53 L.A. COUNTY SEWER SHEET NO. 8 S.C. CAL. BLUEPRINT CO.