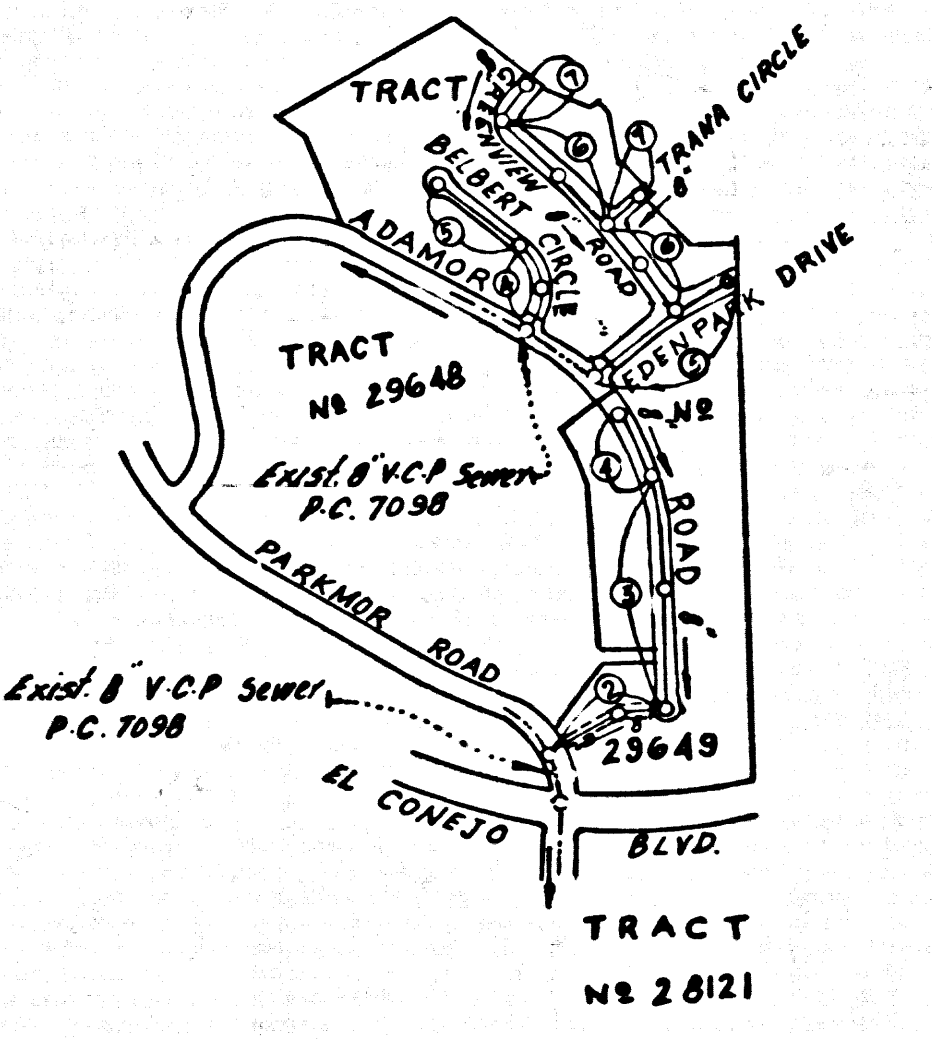


B.M. 5Y 5588 ELEV. 770.859
 Set L&M in conc base of light stand
 (100 d lights) in park lot of Billingsley's
 Steak Ranch 23W & E 320' S E Int.
 Ventilate Blvd & Las Virgenes Road
 MALIBU QUAD. 19 60

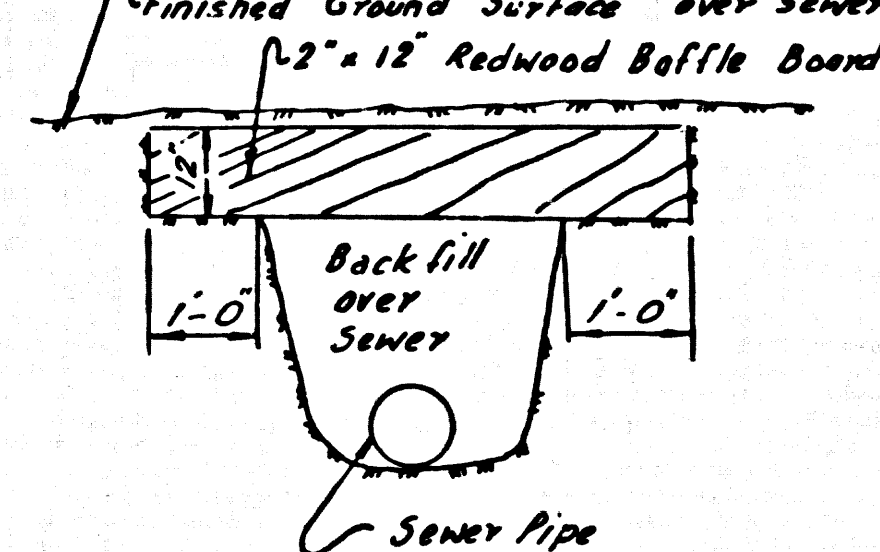
NOTE: LOTS 49, 50 & 51
 SERVED BY SEWER P.C. 7098



INDEX MAP
 TRACT No. 29649
 P.C. 7111
 Scale: 1" = 600'

REVISION
 EXTENDED SEWER LINE IN
 EDENPARK DR. PAGE 5B,
 129 FEET
 REVISED CURB & SEWER
 ELEVATIONS ON TRANA CIRCLE
 PAGE 7B
 APPROVED: *[Signature]*
 REG. C.E. NO. 10653

2" x 12 REDWOOD BAFFLE BOARD DETAIL



- Each end of baffle board will extend one foot into undisturbed ground.
- Baffles will be so spaced that the top of the lower baffle shall be level with the bottom of the upper.
- The upper layer of backfill to be 1 foot min. w/ top soil. Top soil shall be tamped in place and planted with mustard weed seed and adequately watered until growth is restored.

**DOUBLE SCALE
 CALABASAS BLDG. DIST. NO. 9.1**

PROFILE ALIGNMENT AND GRADE OF
SANITARY SEWERS P.C. 7111
 TO BE CONSTRUCTED IN
 TRACT No. 29649

PRIVATE CONTRACT NO. 7111

W.S. 80
 4 SHEETS; 7 PAGES
 SCALE: 1" = 4' HORIZ. 1" = 4' VERT.
 APRIL 1964

PREPARED IN THE OFFICES OF
DEVELOPMENT CONSULTANT INC.
 37077
 BY: *[Signature]*
 REG. C.E. NO. 3523

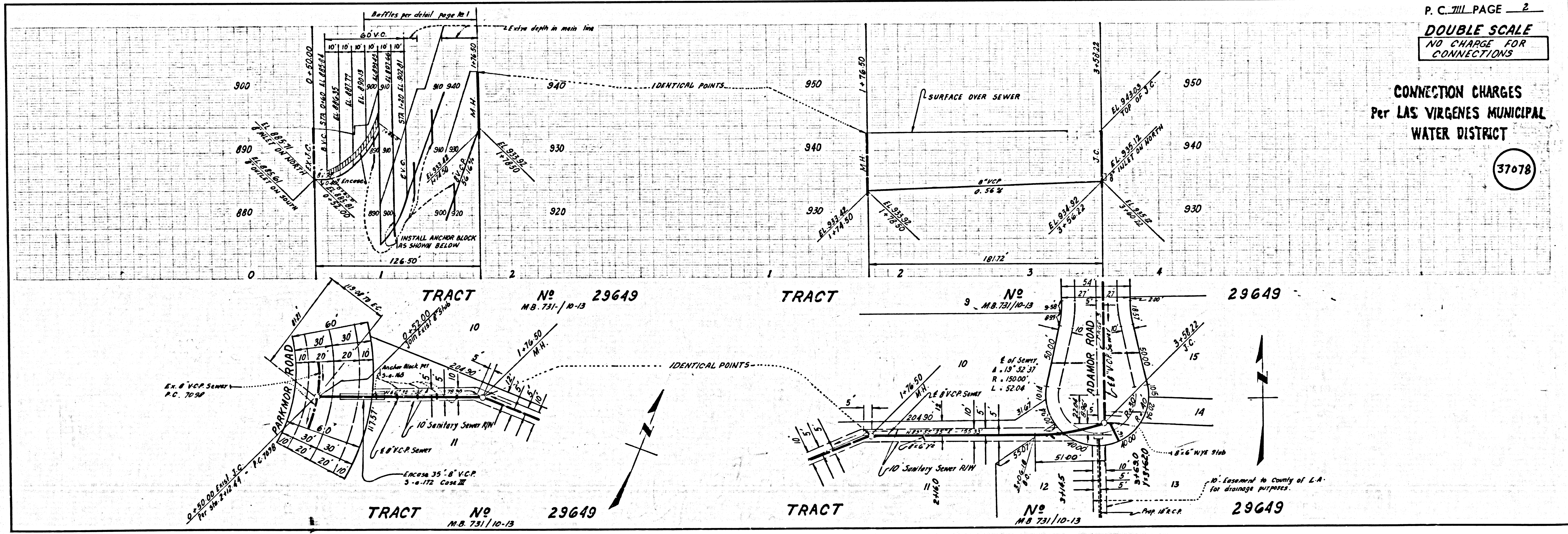
FOR LEGEND SEE PLAN NO. S-64

NOTE:
 GRADES TO WHICH THIS IMPROVEMENT IS TO BE CONSTRUCTED ARE SHOWN ON PLANS AND PROFILES. GRADE POINTS FOR TOP OF CURBS, CENTER LINE OF STREETS, OR CENTER LINE OF ALLEYS ARE SHOWN BY CIRCLES ON PROFILES. AT ALL POINTS BETWEEN DESIGNATED POINTS THE GRADE SHALL BE ESTABLISHED SO AS TO CONFORM TO A STRAIGHT LINE DRAWN BETWEEN SAID DESIGNATED POINTS. ELEVATIONS ARE IN FEET ABOVE U.S.C. & G.S. SEA LEVEL DATUM OF 1929. THIS DRAWING AND THE DATA HEREON ARE HEREBY MADE A PART OF THE SPECIFICATIONS. WORK SHALL BE CONSTRUCTED ACCORDING TO STANDARD SPECIFICATIONS DATED MAY 22, 1962, ON FILE IN THE OFFICE OF THE COUNTY ENGINEER AND SHALL BE PROSECUTED ONLY IN THE PRESENCE OF THE COUNTY ENGINEER. BEFORE WORK CAN BE STARTED, THE CONTRACTOR MUST OBTAIN A PERMIT TO EXCAVATE IN COUNTY STREETS FROM THE L.A. COUNTY ROAD DEPT., DISTRICT OFFICE NO. 2, AND PAY A FEE TO THE COUNTY ENGINEER, ROOM 300, COUNTY ENGINEERING BUILDING, 108 WEST SECOND STREET OR *[Address]* REGIONAL OFFICE, SUFFICIENT TO COVER THE COST OF CONSTRUCTION INSPECTION AND RECORD PLANS. APPROVAL OF THIS PLAN BY THE COUNTY OF LOS ANGELES DOES NOT CONSTITUTE A REPRESENTATION AS TO THE ACCURACY OF THE LOCATION OF OR THE EXISTENCE OR NON-EXISTENCE OF ANY UNDERGROUND UTILITY PIPE, OR STRUCTURE WITHIN THE LIMITS OF THE PROJECT. THIS NOTE APPLIES TO ALL PAGES. IF WORK IS TO BE DONE IN A STATE HIGHWAY, A PERMIT MUST BE OBTAINED FROM THE STATE OF CALIFORNIA, DIVISION OF HIGHWAYS, 120 SOUTH SPRING STREET, LOS ANGELES, CALIFORNIA.

COUNTY OF LOS ANGELES, CALIFORNIA
 JOHN A. LAMBE, COUNTY ENGINEER
 APPROVED BY: *[Signature]* ASSISTANT SANITATION ENGINEER
 SUBMITTED BY: *[Signature]* REGIONAL ENGINEER
 CHECKED BY: *[Signature]* REG. C.E. NO. 19253
 LAS VIRGENES MUNICIPAL WATER DISTRICT
 APPROVED BY: *[Signature]* OFFICE ENGINEER

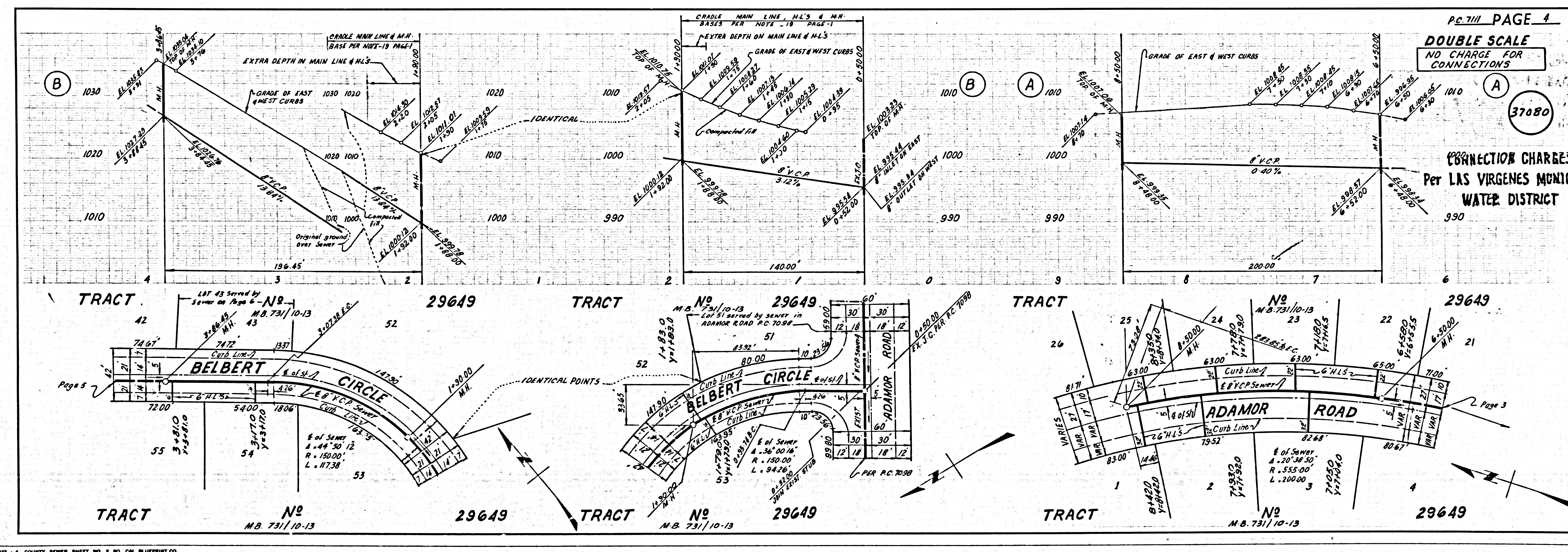
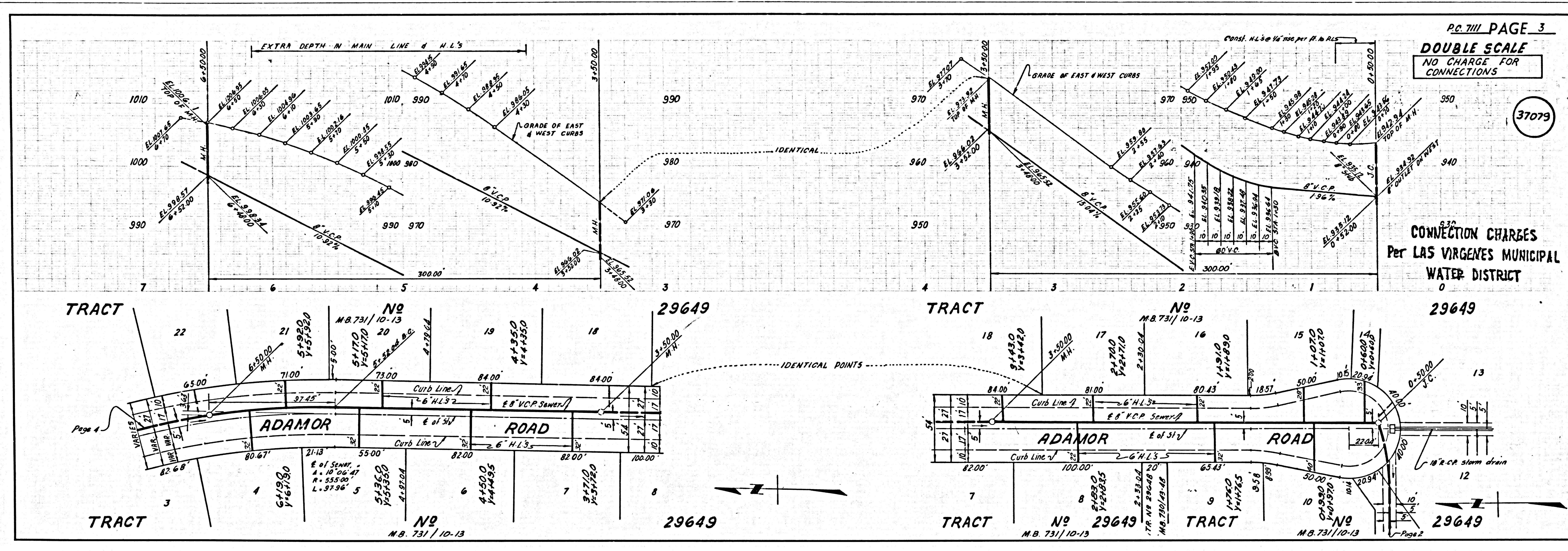
COLLECT CHARGES AS INDICATED
[Signature] 11-12-64

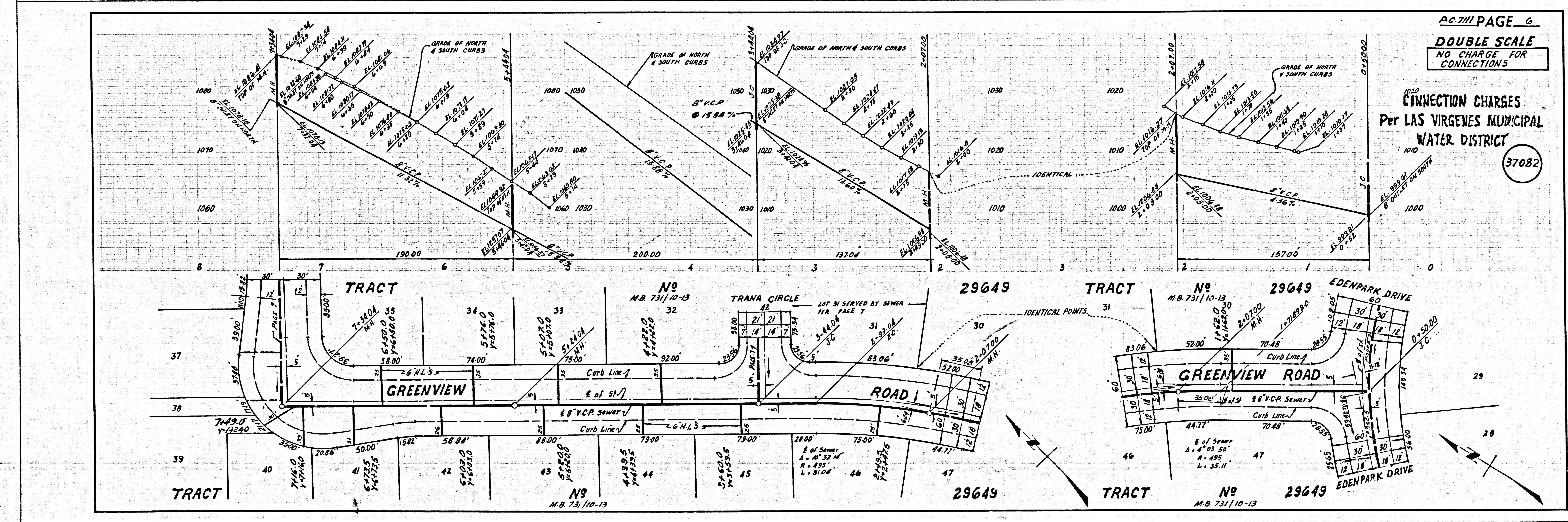
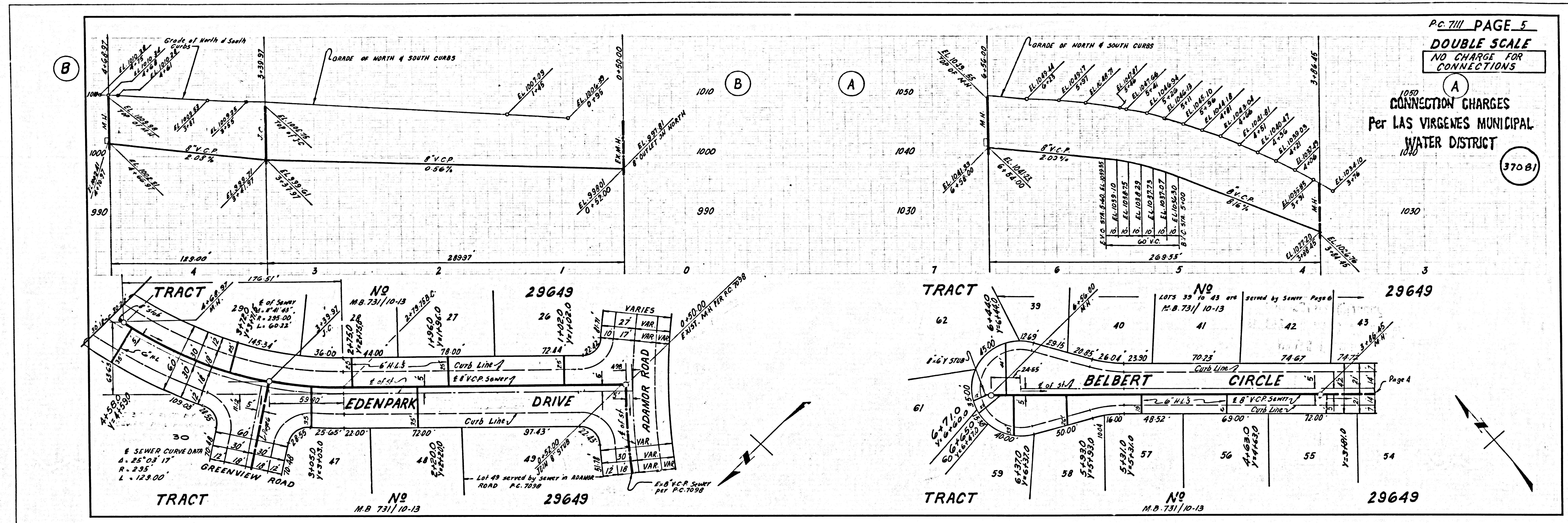
J.N. 0364.04



P. C. 7111 PAGE 2
DOUBLE SCALE
 NO CHARGE FOR CONNECTIONS

CONNECTION CHARGES
 Per LAS VIRGENES MUNICIPAL
 WATER DISTRICT
 37078





DOUBLE SCALE
NO CHARGE FOR
CONNECTIONS

CONNECTION CHARGES
Per LAS VIRGENES MUNICIPAL
WATER DISTRICT

37083

