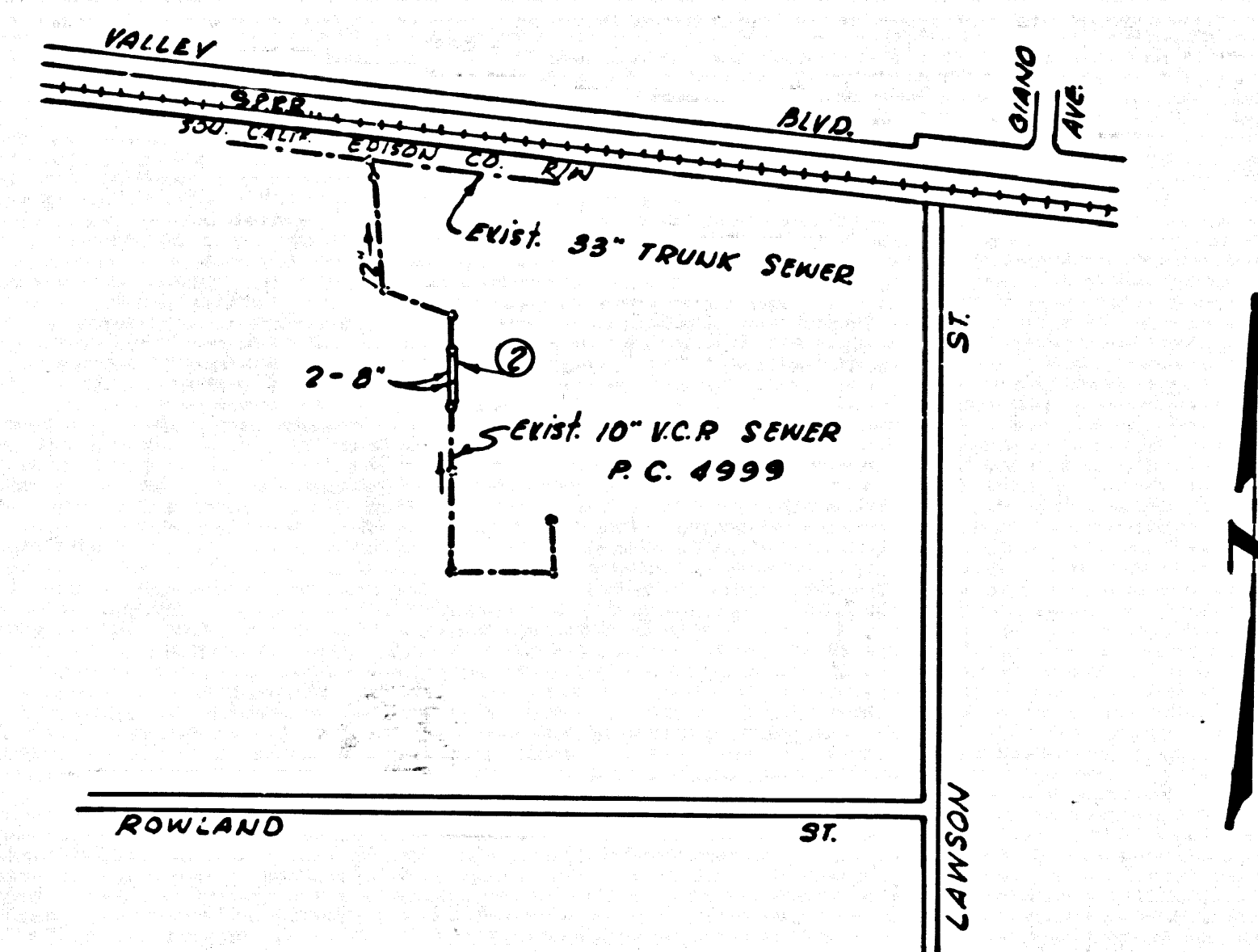


B.M. S.G. 1748 ELEV. 398.558  
 L & I. ch. conc. pavil. 40' S. &  
 Volley Blvd. & 20' E. of Giano Ave.  
 BASELINE QUAD, 1955



INDEX MAP  
 P.C. 7112  
 Scale: 1" = 600'

INDUSTRY BUILDING DISTRICT No. 2.03

USE EXTRA STRENGTH PIPE, ALL TYPE 18 STANDARD STRENGTH EXCEPT AS NOTED.  
 USE MECHANICAL COMPRESSION JOINTS FOR ALL VITRIFIED CLAY PIPE SEWERS PER SPCC, SECS. 34, 41, & 47.  
 ALL STRUCTURES SHALL BE BRICK SEWER STRUCTURES AS PER PLAN NO. S-104, EXCEPT AS NOTED.  
 USE STANDARD MANHOLE FRAMES AND COVERS AS PER PLAN NO. S-117, EXCEPT AS NOTED.  
 USE FORMULA NO. 3, SEC. 34 OF SPECIFICATIONS TO COMPUTE ALLOWABLE LEAKAGE.  
 CONSTRUCT HOUSE LATERALS WITH INVERTS AT PROPERTY LINE 4 FEET BELOW CURB GRADE, OR GRADE OF CENTER LINE OF STREET, EXCEPT AS NOTED.  
 HOUSES IN CIRCLES AT ENDS OF HOUSE LATERALS INDICATE HOUSE LATERALS SHALL BE CONSTRUCTED WITH 12" DIA. 1200 PER FOOT TO PROPERTY LINE.  
 HOUSES IN CIRCLES AT ENDS OF HOUSE LATERALS INDICATE HOUSE LATERALS SHALL BE CONSTRUCTED WITH 12" DIA. 1200 PER FOOT TO PROPERTY LINE.  
 HOUSES IN CIRCLES AT ENDS OF HOUSE LATERALS INDICATE HOUSE LATERALS SHALL BE CONSTRUCTED WITH 12" DIA. 1200 PER FOOT TO PROPERTY LINE.  
 ALL HOUSE LATERALS SHALL BE CONSTRUCTED IN A STRAIGHT ALIGNMENT AT RIGHT ANGLES FROM THE MAIN LINE SEWER EXCEPT AS SHOWN ON THE PLANS. HOUSE LATERALS FROM DRIVEWAYS SHALL NOT HAVE ANY HOUSES OR DECKS THEREON EXCEPT WITH THE MAIN LINE SEWER.  
 THE CONTRACTOR SHALL NOTIFY THE CONSTRUCTION DIVISION BY TELEPHONE MADISON 9-0747, EXT. 8151 AT LEAST 24 HOURS BEFORE EXISTING ANY WORK UNDER THIS CONTRACT.  
 CONSTRUCTION IN STATE HIGHWAYS SHALL CONFORM WITH STATE HIGHWAY PERMIT AND THE CONTRACTOR SHALL PAY ALL COSTS OF CONSTRUCTION THEREON.  
 ALL STATE AND LOCAL TRENCH SAFETY ORDERS WILL BE RIGIDLY ENFORCED.  
 SEWER AND/OR SURFACE DRAINAGE TRENCH WITHIN PAVED AREA WITH FRESH DECK AND/OR TRENCH IN TRENCHES ON UNPAVED OR ASPHALT PAVED MATERIALS, EXCEPT AS NOTED BELOW.

PAGE NO.	STREET	STATION LIMITS		TYPE OF RESURFACING
		FROM	TO	

NO CONSTRUCTION WILL BE PERMITTED IN FILLED AREAS UNLESS ACCEPTABLE CERTIFICATION IS SUBMITTED TO THE CONSTRUCTION DIVISION OF THE CITY ENGINEERS DEPARTMENT THAT RELATIVE COMPACTION IS GREATER THAN 90%.  
 IF COMPACTION IS LESS THAN 90%, THE SEWER MUST BE CRADLED AS PER S-0-164.  
 IF COMPACTION IS GREATER THAN 90%, CRADLING IS NOT REQUIRED.

ALL CONCRETE CURBS, CHUTES, CHUTES, PAVEMENT, AND DRIVEWAYS SHALL BE FINISHED OR JACKED PER THE SPECIFICATIONS AND SHALL BE FINISHED OR JACKED.  
 IF FOLLOWING LATEST REVISED STANDARD PLANS ON FILE IN THE OFFICE OF CITY ENGINEER SHALL APPLY IN THE CONSTRUCTION OF THIS PROJECT.

STANDARD LEGEND	S-44
STANDARD BRICK SEWER STRUCTURE	S-104
STANDARD MANHOLE FRAME AND COVER	S-117
STANDARD MANHOLE STEPS	S-120
STANDARD COVER	S-130
STANDARD WYE SUPPORT	S-171
STANDARD SUPPORT AND PROTECTION OF SEWER PIPES	S-172
STANDARD BRIDGING FOR SEWER PIPES	S-179
MINIMUM ELEVATION SAFETY REQUIREMENTS	S-180
STANDARD SIPHON MANHOLE	S-0-164
SPECIAL CRADLING	S-0-166

THE UNDERGROUND UTILITY COMPANIES WITHIN THE LIMITS OF THIS PROJECT ARE AS FOLLOWS:  
 (1) \_\_\_\_\_  
 (2) \_\_\_\_\_  
 (3) \_\_\_\_\_  
 (4) \_\_\_\_\_

PRIVATE CONTRACT No 7112  
 PROFILE, ALIGNMENT AND GRADE OF  
 SANITARY SEWERS  
 TO BE CONSTRUCTED BY  
 SAN JOSE CREEK SIPHON  
 AND OTHER RIGHTS OF WAY

2 SHEETS, 2 PAGES

OCT. 1964

CITY OF INDUSTRY, CALIFORNIA

JOHN A. LAMBIE CITY ENGINEER

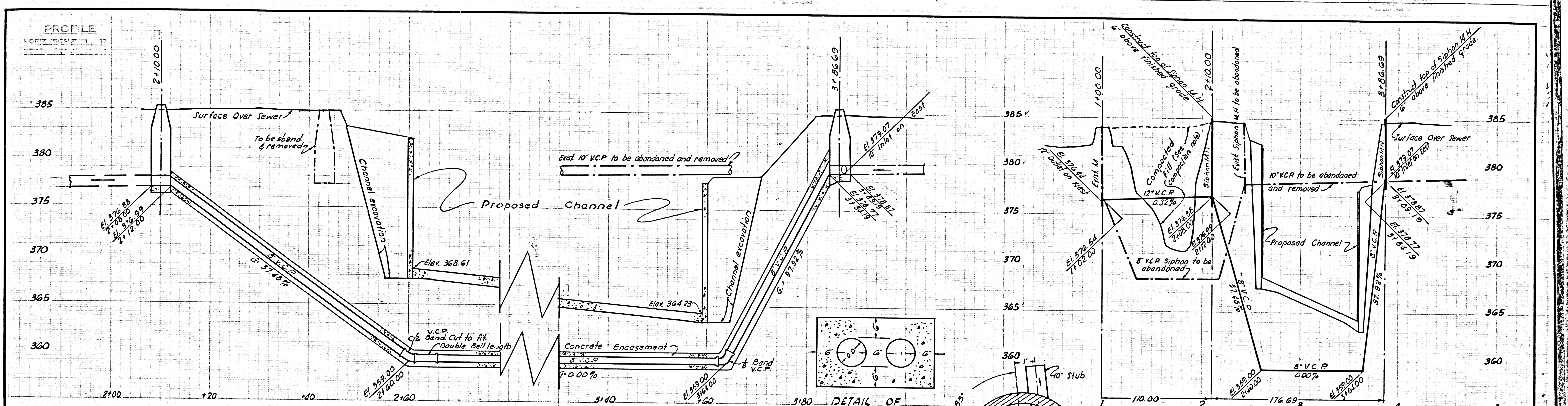
APPROVED BY *[Signature]*  
 CITY ENGINEER

APPROVED BY \_\_\_\_\_  
 CITY OF INDUSTRY, CITY MANAGER

DESIGNED BY *[Signature]*  
 REG. C. E. NO. 14350

NOTE:  
 WORK SHALL BE CONSTRUCTED ACCORDING TO STANDARD SPECIFICATIONS DATED MAY 25, 1962, ON FILE IN THE OFFICE OF THE CITY ENGINEER AND SHALL BE PROTECTED ONLY IN THE PRESENCE OF THE CITY ENGINEER.  
 GRADES TO WHICH THIS IMPROVEMENT IS TO BE CONSTRUCTED ARE SHOWN ON PLANS AND PROFILES. GRADE POINTS FOR TOP OF CURB, CENTER LINE OF STREET OR CENTER LINE OF ALLEY ARE SHOWN BY CIRCLES ON PROFILES AT ALL POINTS BETWEEN DESIGNATED POINTS THE GRADE SHALL BE ESTABLISHED SO AS TO CONFORM TO A STRAIGHT LINE DRAWN BETWEEN SAID DESIGNATED POINTS.  
 ELEVATIONS ARE IN FEET ABOVE U.S.C. & G.S. SEA LEVEL DATUM OF 1929.  
 UNIT PRICES FOR ADDITIONAL WORK WHICH MAY BE REQUIRED BUT WHICH CANNOT BE ASCERTAINED IN ADVANCE, SHALL BE SUBMITTED IN THE PROPOSAL.  
 THIS DRAWING AND THE DATA HEREON ARE HEREBY MADE A PART OF THE SPECIFICATIONS.

LAYOUT	UNDERGROUND		
TRACED	BENCH MARKS		
CHECKED	MAINTENANCE	<i>[Signature]</i>	10/9/64
F. B.	INSPECTOR		
A. B.	RECORD PLANS		

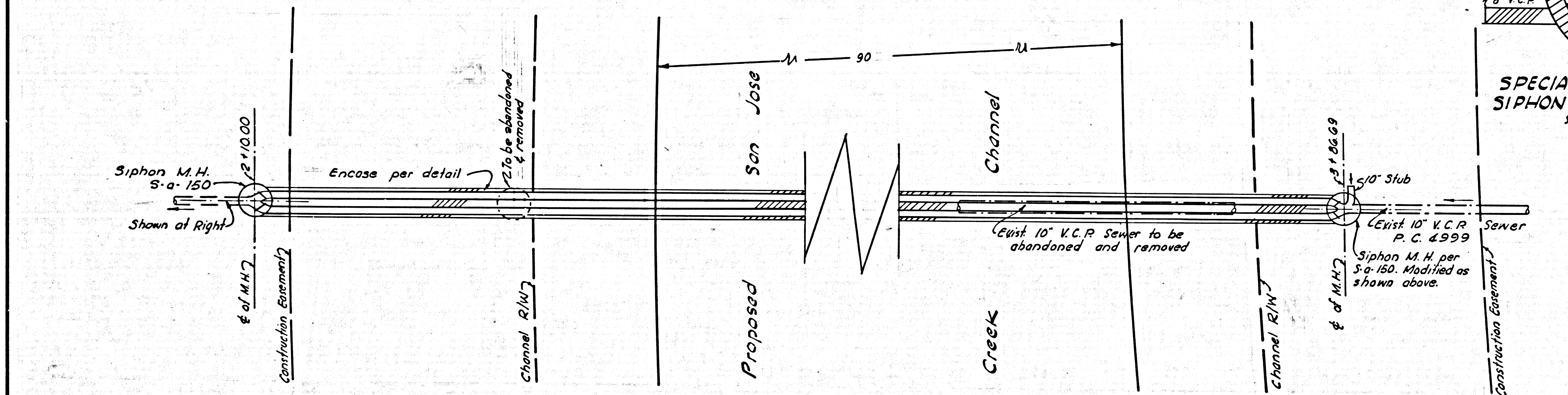


Scale: Horiz: 1" = 8'  
Vert: 1" = 4'

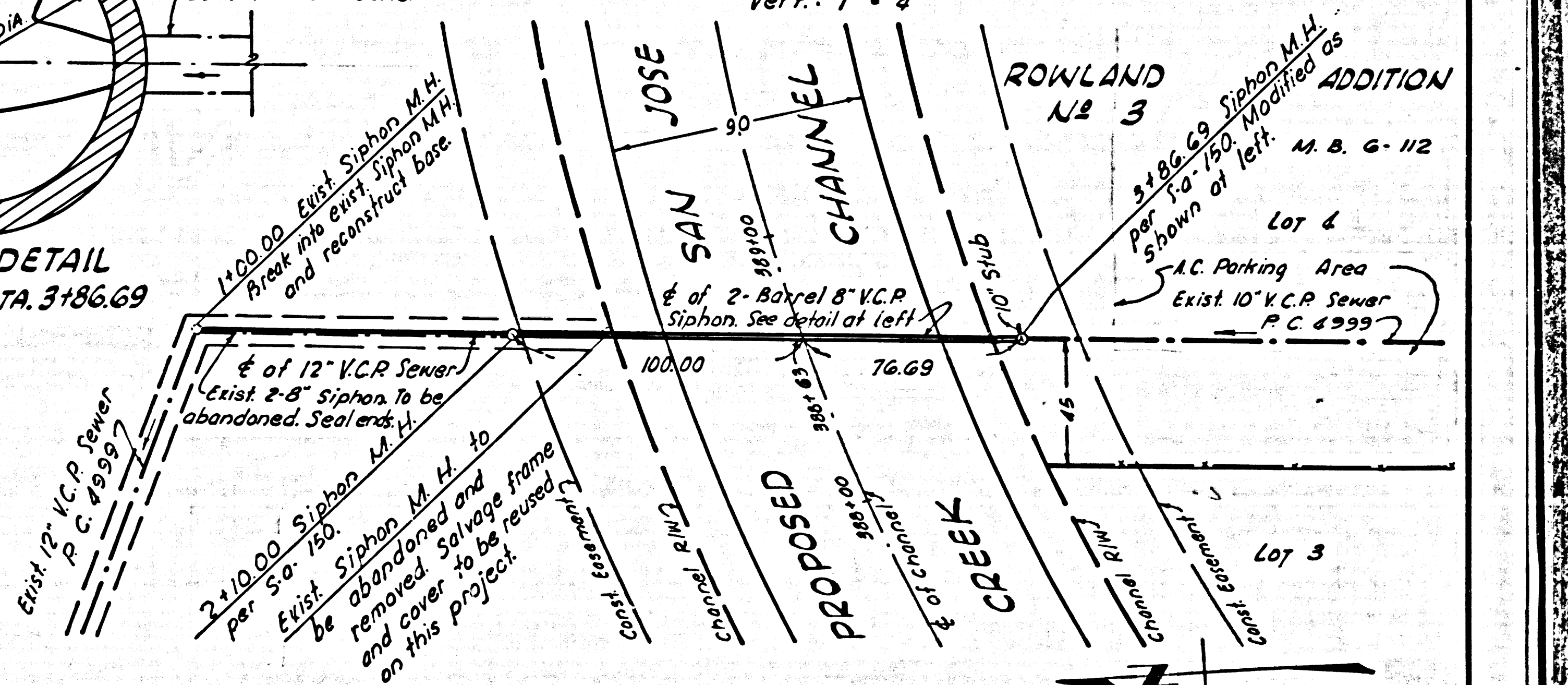
DETAIL OF CONCRETE ENCASUREMENT  
No Scale

SPECIAL BASE DETAIL  
SIPHON M.H. at STA. 3+86.69  
Scale: 1" = 2'

Scale: Horiz: 1" = 40'  
Vert: 1" = 4'



2 BARREL 8" V.C.P SIPHON  
SAN JOSE CREEK CROSSING



PREPARED BY <b>JOHN A. LAMBIE</b> CITY ENGINEER  RECOMMENDED BY <i>[Signature]</i> ASST. SANITATION ENGINEER	REVISIONS MARK    DATE    DESCRIPTION		LOS ANGELES COUNTY FLOOD CONTROL DISTRICT
	DRAWN BY: <i>[Signature]</i> TRACED BY: <i>[Signature]</i> CHECKED BY: <i>[Signature]</i>	DESIGNED BY: <i>[Signature]</i> SUBMITTED BY: <i>[Signature]</i> DATE: <i>[Signature]</i>	
CHECKED BY: <i>[Signature]</i> DATE: <i>[Signature]</i>	SCALE: AS NOTED	SHEET NO. <i>[Signature]</i> OF <i>[Signature]</i>	

L. A. CO. ENG. REF: P.C. 7112