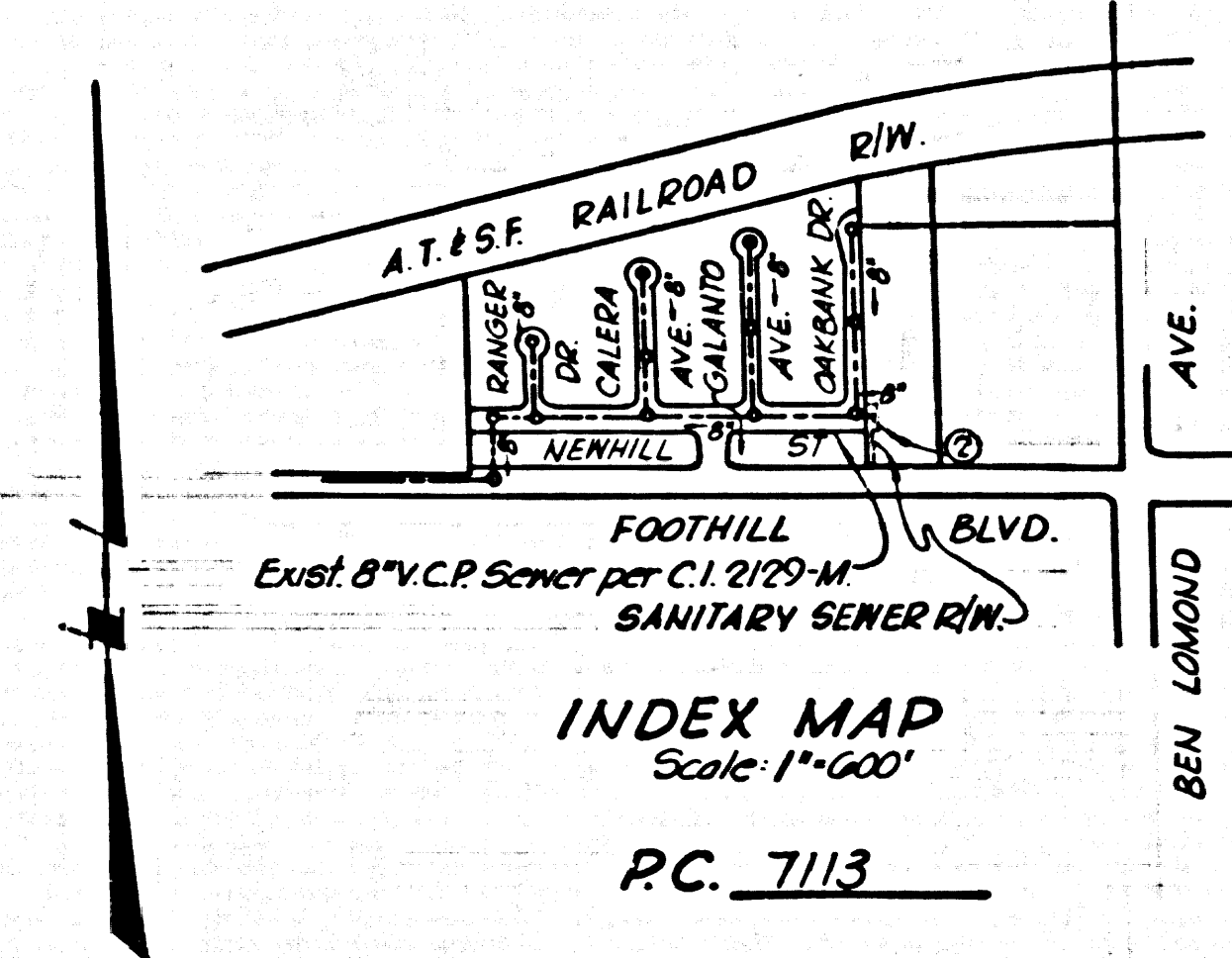


B.M. #10-10 ELEV. 676.185
 Foothill Blvd. and Ben Lomond Ave. Cl.
 intersection C.S. Mon. in H.M. stamped
 "County Surveyor R.E. 2171"
 - FB 15th Pt. 17, S. 6142
 SAN DIMAS, 1962 QUAD. 19 of Adj.



SAN DIMAS BLDG. DIST. NO. 10

PROFILE ALIGNMENT AND GRADE OF P.C. 7113
 SANITARY SEWERS PAGE 1
 CONSTRUCTED IN

NEWHILL STREET R/W.
 PRIVATE CONTRACT NO. 7113

W.S. 47
 1 SHEET, 2 PAGES
 SCALE: VERT. 1"=4' HORIZ. 1"=40' BERT., 1964
 PREPARED IN THE OFFICES OF
 HAROLD L. JOHNSON ENGINEERING
 REG. C. E. NO. 44468
 FOR LEGEND SEE PLAN NO. S-4-54

- NOTES:
1. PROVIDE STAKES ON THE PROPERTY LINE OR PROPERTY LINES PRODUCED AT RIGHT ANGLES TO THE SEWER LINE AT THE CENTER LINE OF EACH MANHOLE.
 2. NO REPRESENTATIVE OF THE COUNTY ENGINEER WILL SURVEY OR LAY OUT ANY PORTION OF THE WORK.
 3. THE PRIVATE ENGINEER SHALL FURNISH THE COUNTY ENGINEER WITH GRADE SHEETS AND STATIONING FOR ALL MAIN LINES AND BRANCHES AND SHALL PROVIDE STAKES FOR THEM AT THEIR PROPER LOCATIONS WITH STATIONING PLAINLY MARKED. THE PRIVATE ENGINEER SHALL BE RESPONSIBLE FOR THE CORRECT LOCATION OF ALL MAIN LINES AND BRANCHES AND SHALL BE RESPONSIBLE FOR THE CORRECT LOCATION OF ALL MAIN LINES AND BRANCHES. ANY CHANGE IN ALIGNMENT SHALL BE REQUESTED IN WRITING BY THE PRIVATE ENGINEER.
 4. THE PRIVATE ENGINEER SHALL BE RESPONSIBLE FOR THE CORRECT LOCATION OF ALL MAIN LINES AND BRANCHES AND SHALL BE RESPONSIBLE FOR THE CORRECT LOCATION OF ALL MAIN LINES AND BRANCHES. ANY CHANGE IN ALIGNMENT SHALL BE REQUESTED IN WRITING BY THE PRIVATE ENGINEER.
 5. NO REVISIONS SHALL BE MADE IN THESE PLANS WITHOUT THE APPROVAL OF THE COUNTY ENGINEER.
 6. THE CONTRACTOR SHALL NOTIFY THE CONSTRUCTION DIVISION BY TELEPHONE, MADISON 9-4747, EXT. 8531, AT LEAST TWENTY-FOUR HOURS BEFORE STARTING ANY WORK UNDER THIS CONTRACT.
 7. MANHOLES SHALL BE 24" DIA. UNLESS OTHERWISE SPECIFIED. MANHOLES SHALL BE 24" DIA. UNLESS OTHERWISE SPECIFIED. MANHOLES SHALL BE 24" DIA. UNLESS OTHERWISE SPECIFIED.
 8. USE STANDARD MANHOLE FRAMES AND COVERS, 24" DIA. EXCEPT AS NOTED.
 9. USE STEEL STRENGTH PIPE, ALL PIPE IS STANDARD LENGTHS EXCEPT AS NOTED.
 10. USE COUNTY-APPROVED MECHANICAL COMPRESSION JOINTS FOR ALL V.C.P. JOINTS PER SPECS., SECS. 54 & 58.
 11. WHERE EYE-BROWING WATER IS ENCOUNTERED DURING THE CONSTRUCTION OF THE SEWER, THE PIPE SHALL BE ENCASED PER 8-172, CASE III, UNLESS OTHERWISE APPROVED BY THE COUNTY ENGINEER.
 12. IF A POWER POLE IS WITHIN THREE FEET OF THE SEWER, THE SEWER SHALL BE ENCASED, PER 8-172, CASE III, TWO FEET ON EITHER SIDE FROM THE POINT OF INTERFERENCE.
 13. IF DURING THE COURSE OF CONSTRUCTION IT IS DETERMINED THAT THERE IS LESS THAN FOUR FEET OF COVER OVER THE TOP OF A MAIN LINE OR HOUSE LATERAL V.C.P. SEWER WHICH IS NOT INDICATED ON THE PLANS, THE PIPE SHALL BE ENCASED PER 8-172, CASE III, UNLESS OTHERWISE APPROVED BY THE COUNTY ENGINEER.
 14. RESURFACE ALL TRENCHES WITHIN PAVED AREAS TO MEET L.A. COUNTY ROAD DEPT. OR CALIFORNIA STATE HIGHWAY REQUIREMENTS IN ACCORDANCE WITH PERMITS.
 15. FOR ALLOWABLE LEAKAGE TEST USE FORMULA NO. 2, SPECS., SEC. 54.
 16. All state and local trench safety orders will be rigidly enforced.

ISSUE - NO HOUSE CONNECTION PERMITS UNTIL SEWER R/W IS DEDICATED

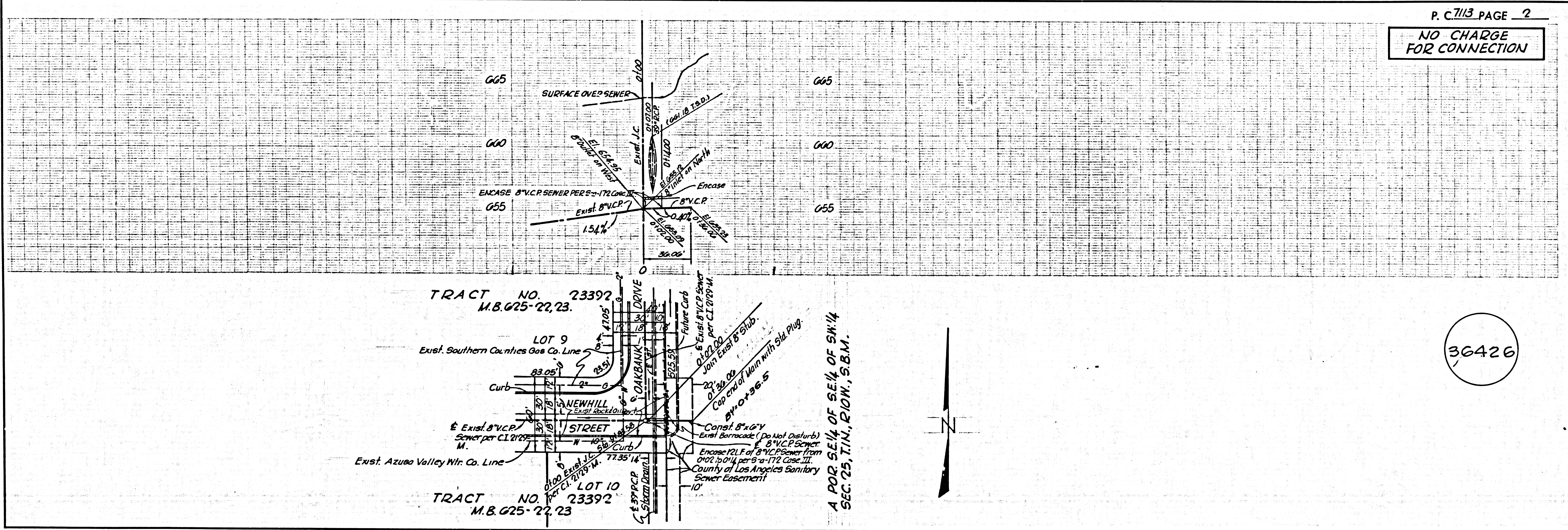
COLLECT CHARGES AS INDICATED
 PR Spec. 12-7-64

NO CONNECTIONS FOR THE DISPOSAL OF INDUSTRIAL WASTES SHALL BE MADE TO SEWERS SHOWN ON THESE DRAWINGS WITHOUT WRITTEN PERMISSION FROM THE CHIEF ENGINEER AND GENERAL MANAGER OF THE COUNTY SANITATION DISTRICTS.

NOTE:
 GRADES TO WHICH THIS IMPROVEMENT IS TO BE CONSTRUCTED ARE SHOWN ON PLANS AND PROFILES. GRADE POINTS FOR TOP OF CURBS, CENTER LINE OF STREETS, OR CENTER LINE OF ALLEYS ARE SHOWN BY CIRCLES ON PROFILES. AT ALL POINTS BETWEEN DESIGNATED ELEVATIONS ARE TO BE ESTABLISHED TO ADJUST TO A STRAIGHT LINE DRAWN BETWEEN SAID DESIGNATED POINTS.
 THIS DRAWING AND THE DATA HEREON ARE HEREBY MADE A PART OF THE SPECIFICATIONS.
 WORK SHALL BE CONSTRUCTED ACCORDING TO STANDARD SPECIFICATIONS DATED MAY 22, 1962 ON FILE IN THE OFFICE OF THE COUNTY ENGINEER AND SHALL BE PROSECUTED ONLY IN THE PRESENCE OF THE COUNTY ENGINEER.
 APPROVAL OF THIS PLAN BY THE COUNTY OF LOS ANGELES DOES NOT CONSTITUTE A REPRESENTATION AS TO THE ACCURACY OF THE LOCATION OF OR THE EXISTENCE OR NON-EXISTENCE OF ANY UNDERGROUND UTILITY PIPE, OR STRUCTURE WITHIN THE LIMITS OF THE PROJECT. THIS NOTE APPLIES TO ALL PAGES.
 IF WORK IS TO BE DONE IN A STATE HIGHWAY, A PERMIT MUST BE OBTAINED FROM THE STATE OF CALIFORNIA, DIVISION OF HIGHWAYS, THE SOUTH SPRING STREET, LOS ANGELES, CALIFORNIA.

COUNTY OF LOS ANGELES, CALIFORNIA
 JOHN A. LAMBIE, COUNTY ENGINEER
 APPROVED BY: *Paul E. Ke...*
 ASSISTANT SANITATION ENGINEER

J. D. PARKHURST, CHIEF ENGINEER
 APPROVED BY: *[Signature]*
 OFFICE ENGINEER
 SUBMITTED BY: *Harold L. Johnson*
 SANITATION ENGINEER
 CHECKED BY: *[Signature]*
 REG. C. E. NO. 44468
 36425
 J. N. 0344.05



P. C. 7113 PAGE 2
 NO CHARGE FOR CONNECTION

36426