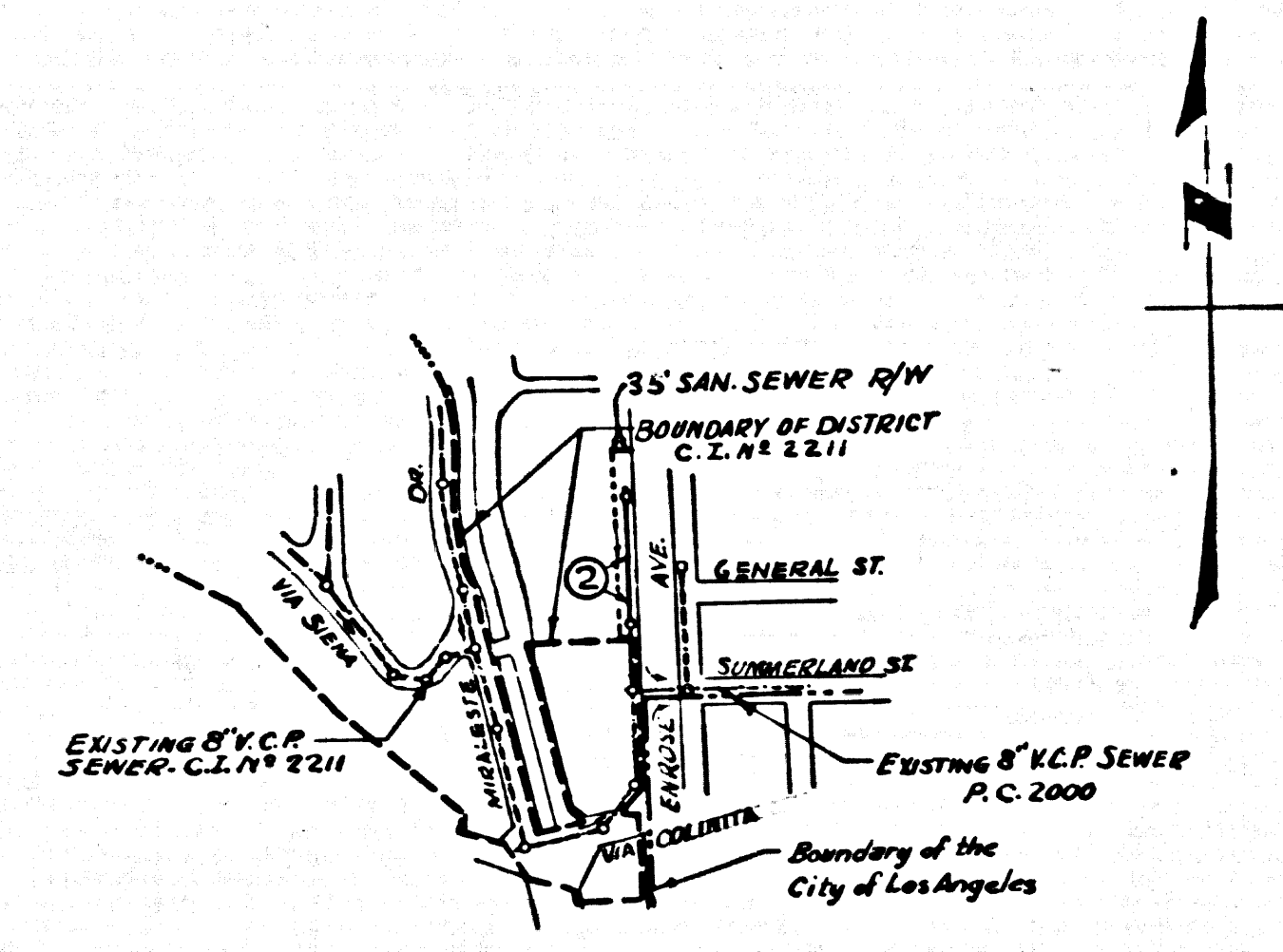


LOMITA BLDG. DIST. NO. 12

PROFILE ALIGNMENT AND GRADE OF P.C. 7118
 SANITARY SEWERS PAGE 1
 TO BE CONSTRUCTED IN

B.M. FF 80 Elev. = 521.935 F.B. 2722-17
 Summerland Ave. & Enrose Ave. N.E. Cor.
 Bl. Spk. in Curb 4 Ft. East of East end C.R.



INDEX MAP
 SCALE: 1" = 600'

- NOTES:
1. PROVIDE STAKES ON THE PROPERTY LINE OR PROPERTY LINES PRODUCED AT RIGHT ANGLES TO THE SEWER LINE AT THE CENTER LINE OF EACH MANHOLE.
 2. NO REPRESENTATIVE OF THE COUNTY ENGINEER WILL SLAVEY OR LAY OUT ANY PORTION OF THE WORK.
 3. THE OWNER OR HIS AUTHORIZED REPRESENTATIVE SHALL FURNISH THE COUNTY ENGINEER WITH GRADE SHEETS AND STATIONING FOR ALL HOUSE LATERALS AND Y BRANCHES AND SHALL PROVIDE STAKES FOR THEM AT THEIR PROPER LOCATIONS WITH STATIONING PLAINLY MARKED. ANY CHANGE IN LOCATION SHALL BE REQUESTED IN WRITING BY THE OWNER OR HIS REPRESENTATIVE.
 4. THE PRIVATE ENGINEER SHALL FURNISH THE HOUSE LATERAL DEPTH AT THE PROPERTY LINE BELOW THE TOP OF CURB ELEVATION FOR EACH HOUSE LATERAL ON THE GRADE SHEET.
 5. NO REVISIONS SHALL BE MADE IN THESE PLANS WITHOUT THE APPROVAL OF THE COUNTY ENGINEER.
 6. USE STANDARD MANHOLE FRAMES AND COVERS, 2'-0" , EXCEPT AS NOTED.
 7. USE EXTRA STRENGTH PIPE.
 8. USE MANHOLE JOINTS WITH COMPRESSION JOINTS FOR ALL V.C.P. JOINTS PER SPECS. SECS. 16 & 48.49
 9. REINFORCE ALL TRENCH WITHIN PAVED AREA TO MEET L.A. COUNTY ROAD DEPT. OR CALIF. STATE HIGHWAY REQUIREMENTS IN ACCORDANCE WITH PERMITS.
 10. ENCASE FOUR FEET OF SEWER AT POINTS OF INTERFERENCE WITH POLES, PER S-23
 11. HOUSE LATERALS TO BE CONSTRUCTED WITH INVERTS ~~AS SHOWN~~ 2 FEET DEEP below wily line San. Sewer R/W
 12. ALL STRUCTURES SHALL BE BRICK SEWER STRUCTURES, 6" x 8" , EXCEPT AS NOTED.
 13. FOR ALLOWABLE LEAKAGE TEST USE FORMULA NO. 2, SPECS. SEC. 54.
 14. MANHOLE TOPS IN UNIMPROVED RIGHTS-OF-WAY TO BE SIX INCHES ABOVE FINISHED GRADE.
 15. THE CONTRACTOR SHALL NOTIFY THE CONSTRUCTION 4-DIVISION DIVISION BY TELEPHONE, MADISON 5-4147, AT LEAST TWENTYFOUR HOURS BEFORE STARTING ANY WORK UNDER THIS CONTRACT.
 16. ALL STATE AND LOCAL TRENCH SAFETY ORDERS WILL BE RIGIDLY ENFORCED.

R/W EAST OF MIRALESTE DR.
 PRIVATE CONTRACT NO. 7118

W.S. 28
 1 SHEETS; 2 PAGES
 SCALE: VERT. 1" = 8'
 HORIZ. 1" = 40'
 SEPT. 1964
 PREPARED IN THE OFFICES OF
 OTTE BAY
 ENGINEERING
 CORPORATION
 By: Raymond J. Coleman
 REG. C.E. NO. 7191

36578

FOR LEGEND SEE PLAN NO. S-1

NOTE:
 GRADES TO WHICH THIS IMPROVEMENT IS TO BE CONSTRUCTED ARE SHOWN ON PLANS AND PROFILES. GRADE POINTS FOR TOP OF CURB, CENTER LINE OF STREETS, OR CENTER LINE OF ALLEYS ARE SHOWN BY CIRCLES ON PROFILES. AT ALL POINTS BETWEEN DESIGNATED POINTS THE GRADE SHALL BE ESTABLISHED SO AS TO CONFORM TO A STRAIGHT LINE DRAWN BETWEEN SAID DESIGNATED POINTS.
 ELEVATIONS ARE IN FEET ABOVE U.S.C. & G.S. SEA LEVEL DATUM OF 1929. STANDARD
 THIS DRAWING AND THE DATA HEREON ARE HEREBY MADE A PART OF THE SPECIFICATIONS.
 WORK SHALL BE CONSTRUCTED ACCORDING TO THE SPECIFICATIONS OF THE COUNTY ENGINEER. DATED MAP 25/1962
 AND SHALL BE PRODUCED ONLY IN THE PRESENCE OF THE COUNTY ENGINEER.
 BEFORE WORK CAN BE STARTED THE CONTRACTOR MUST OBTAIN A PERMIT TO EXCAVATE IN COUNTY STREETS FROM THE L.A. COUNTY ROAD DEPT., DISTRICT OFFICE NO. 1 AND MAKE A DEPOSIT WITH THE COUNTY ENGINEER AND PALM SPRINGS-CENTINELLA VALLEY REGIONAL OFFICE SUFFICIENT TO COVER THE COST OF CONSTRUCTION INSPECTION AND RECORD PLANS.
 APPROVAL OF THIS PLAN BY THE COUNTY OF LOS ANGELES DOES NOT CONSTITUTE A REPRESENTATION AS TO THE ACCURACY OF THE LOCATION OR OF THE EXISTENCE OR NON-EXISTENCE OF ANY UNDERGROUND UTILITY PIPE, OR STRUCTURE WITHIN THE LIMITS OF THIS PROJECT. THIS NOTE APPLIES TO ALL LOTS.
 IF WORK IS TO BE DONE IN A STATE HIGHWAY, A PERMIT MUST BE OBTAINED FROM THE STATE OF CALIFORNIA, DIVISION OF HIGHWAYS, 120 SOUTH SPRING STREET.

NO CONNECTIONS FOR THE DISPOSAL OF INDUSTRIAL WASTES SHALL BE MADE TO SEWERS SHOWN ON THESE DRAWINGS WITHOUT WRITTEN PERMISSION FROM THE CHIEF ENGINEER AND GENERAL MANAGER OF THE COUNTY DEPARTMENT.

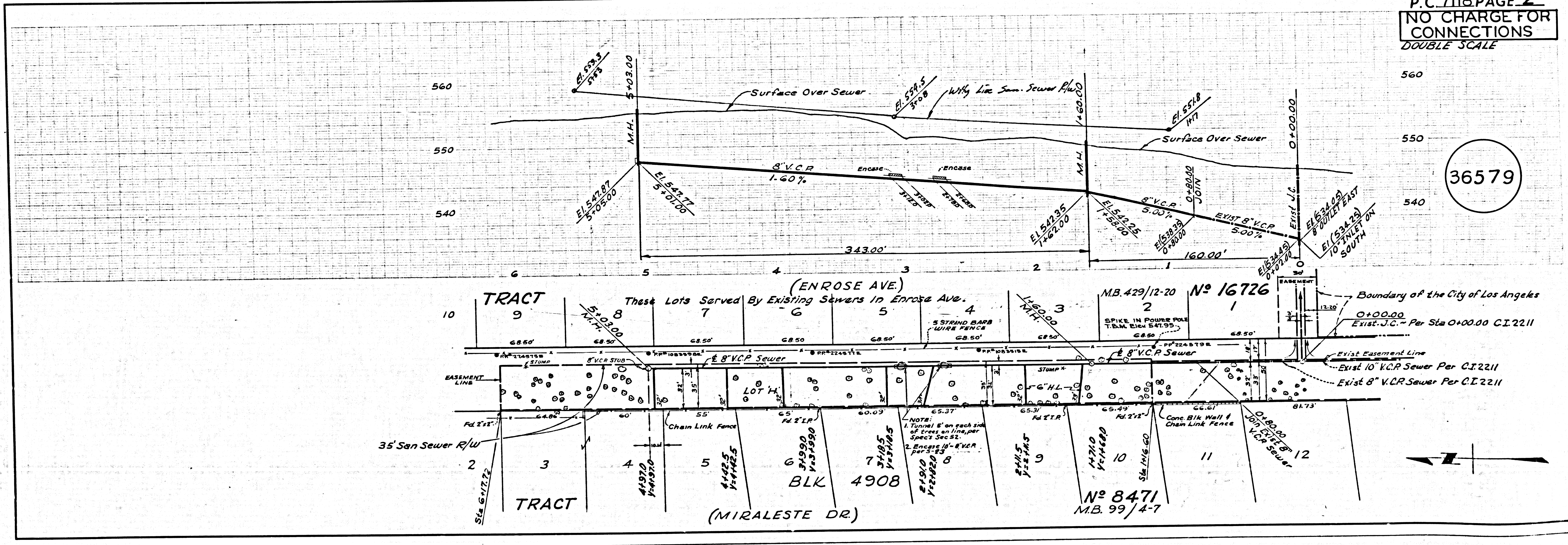
COUNTY OF LOS ANGELES, CALIFORNIA

APPROVED, JOHN A. LAMBIE, COUNTY ENGINEER APPROVED, J.B. PARKINER, CHIEF ENGINEER
 CO. SAN. DIST. NO. 5
 APPROVED BY: Raymond J. Coleman ASSISTANT SANITATION ENGINEER
 SUBMITTED BY: John C. Gausman REGIONAL ENGINEER
 CHECKED BY: Raymond J. Coleman REG. C.E. NO. 10453

COLLECT CHARGES AS INDICATED
John A. Lambie 12/29/64

J.N. 0364.09

P.C. 7118 PAGE 2
 NO CHARGE FOR CONNECTIONS
 DOUBLE SCALE



36579