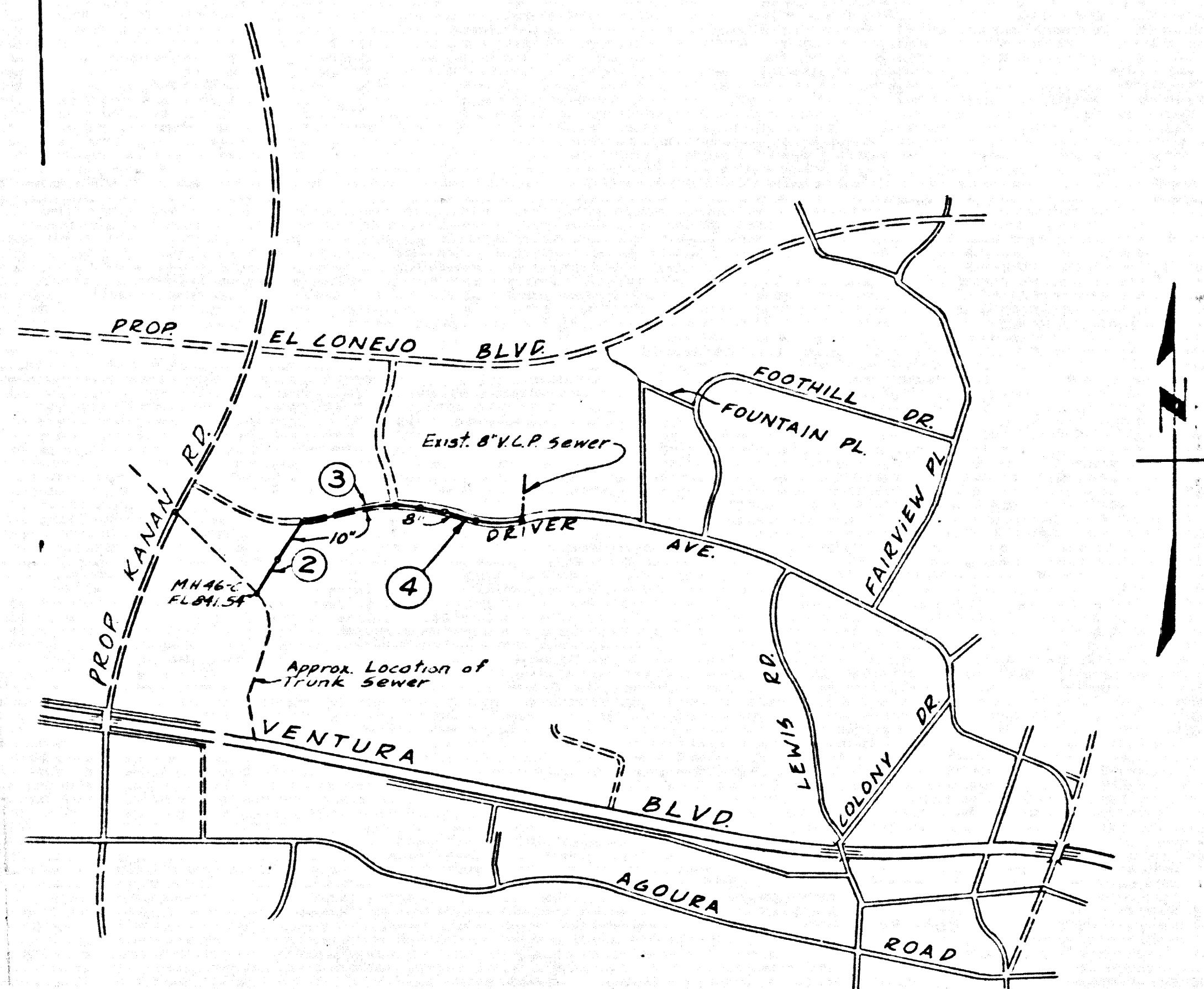


R.M. SY 5620 ELEV. 904.450
 CHIS KNOB ON E END OF CONC. GUARDRAIL ON
 E. BOUND ROADWAY OF VENTURA BLVD. 212'S
 Q/L VENTURA BLVD. @ STA 362+00 ± 350' E.
 LEWIS RD. ± 32 MI. W. LAS VIRGENES RD.
 MALIBU QUAD. 19 60



INDEX MAP
 SCALE: 1" = 1000'

DOUBLE SCALE
 CALABASAS BLDG. DIST. NO. 9.1

PROFILE ALIGNMENT AND GRADE OF CHANGE ORDER 14
 SANITARY SEWERS PAGE 1

TO BE CONSTRUCTED IN
 DRIVER AVENUE
 AND
 SANITARY SEWER EASEMENT
 PRIVATE CONTRACT NO. 19/81005
 (L. A. COUNTY REFERENCE P. C. NO. 7135)

2 SHEETS, 4 PAGES
 SCALE: VERT. 1" = 40'
 HORIZ. 1" = 40' JULY, 1965

PREPARED IN THE OFFICES OF
 JOHN S. GREGORY COMPANY

BY *John S. Gregory*
 REG. C. E. NO. 6353

40584

FOR LEGEND SEE PLAN NO. S-6-64

- NOTES
1. ALL NOTES SHOWN HEREON APPLY TO PAGES 1, 2, 3, 4
 2. THE SEWER DISTRICT MENTIONED HEREIN SHALL MEAN THE LAS VIRGENES MUNICIPAL WATER DISTRICT.
 3. THE SCHOOL DISTRICT MENTIONED HEREIN SHALL MEAN THE LAS VIRGENES UNIFIED SCHOOL DISTRICT.
 4. REFERENCE TO STANDARD SPECIFICATIONS SHALL MEAN THE LOS ANGELES COUNTY STANDARD SPECIFICATIONS.
 5. NO REVISIONS SHALL BE MADE IN THESE PLANS WITHOUT THE APPROVAL OF THE SEWER DISTRICT.
 6. THE CONTRACTOR SHALL NOTIFY THE SEWER DISTRICT BY TELEPHONE, 805-889-0110, AT LEAST TWENTY-FOUR HOURS BEFORE STARTING ANY WORK UNDER THIS CONTRACT.
 7. MANHOLES SHALL BE PRECAST CONCRETE MANHOLES PER STD. DWS. NO. 6. DROP MANHOLE SHALL BE PRECAST CONCRETE PER STD. DWS. NO. 8.
 8. USE MANHOLE FRAMES AND COVERS PER STD. DWS. NO. 10.
 9. MANHOLE TOPS IN UNIMPROVED RIGHTS-OF-WAY TO BE SIX INCHES ABOVE FINISHED GRADE, EXCEPT WHERE OTHERWISE SHOWN ON PLANS.
 10. USE EXTRA STRENGTH PIPE.
 11. USE MECHANICAL COMPRESSION JOINTS FOR ALL V.C.P. JOINTS PER SPECS., SECS. 36 & 48.
 12. WHERE EVER GROUND WATER IS ENCOUNTERED DURING THE CONSTRUCTION OF THE SEWERS, THE V.C.P. JOINTS SHALL BE OF JOINT COMPOUND PER SPECS., SECS. 31 & 49, OR MECHANICAL COMPRESSION JOINTS PER SPECS., SEC. 36.
 13. IF A POWER POLE IS WITHIN THREE FEET OF THE SEWER, THE SEWER SHALL BE ENCASED PER STD. DWS. NO. 2, TYPE 1, TWO FEET ON EITHER SIDE FROM THE POINT OF INTERFERENCE.
 14. IF DURING THE COURSE OF CONSTRUCTION IT IS DETERMINED THAT THERE IS LESS THAN FOUR FEET OF COVER OVER THE TOP OF A SEWER WHICH IS NOT INDICATED ON THE PLANS, THE PIPE SHALL BE ENCASED PER STD. DWS. NO. 2, TYPE 1, UNLESS OTHERWISE APPROVED BY THE SEWER DISTRICT.
 15. THE SCHOOL DISTRICT WILL PROVIDE OFFSET LINE AND GRADE STAKES AT GROUND LEVEL, AND WILL FURNISH CUT-SHEETS THEREFOR. THE CONTRACTOR SHALL BE RESPONSIBLE FOR TRANSFER INTO THE TRENCH FOR CONSTRUCTION.
 16. FOR ALLOWABLE LEAKAGE TEST USE FORMULA NO. 2, SPECS., SEC. 54.
 17. ALL STATE AND LOCAL TRENCH SAFETY ORDERS WILL BE RIGIDLY ENFORCED.
 18. PIPE BEDDING SHALL BE TYPE B OR C PER STD. DWS. NO. 1.
 19. STANDARD DRAWINGS MENTIONED HEREIN ARE PER SEWER DISTRICT STANDARD DRAWINGS AS PREPARED BY BOYLE ENGINEERING, AND ARE ATTACHED HERETO.

NOTE
 GRADES TO WHICH THIS IMPROVEMENT IS TO BE CONSTRUCTED ARE SHOWN ON PLANS AND PROFILES. POINTS THE GRADE SHALL BE ESTABLISHED SO AS TO CONFORM TO A STAKEOUT LINE DRAWN BETWEEN SAID DESIGNATED POINTS. ELEVATIONS ARE IN FEET ABOVE U.S.C. & G.S. SEA LEVEL DATUM OF 1929. THIS DRAWING AND THE DATA HEREON ARE HEREBY MADE A PART OF THE SPECIFICATIONS. WORK SHALL BE CONSTRUCTED ACCORDING TO STANDARD SPECIFICATIONS DATED 1961, 1962, ON FILE IN THE OFFICE OF THE COUNTY ENGINEER.

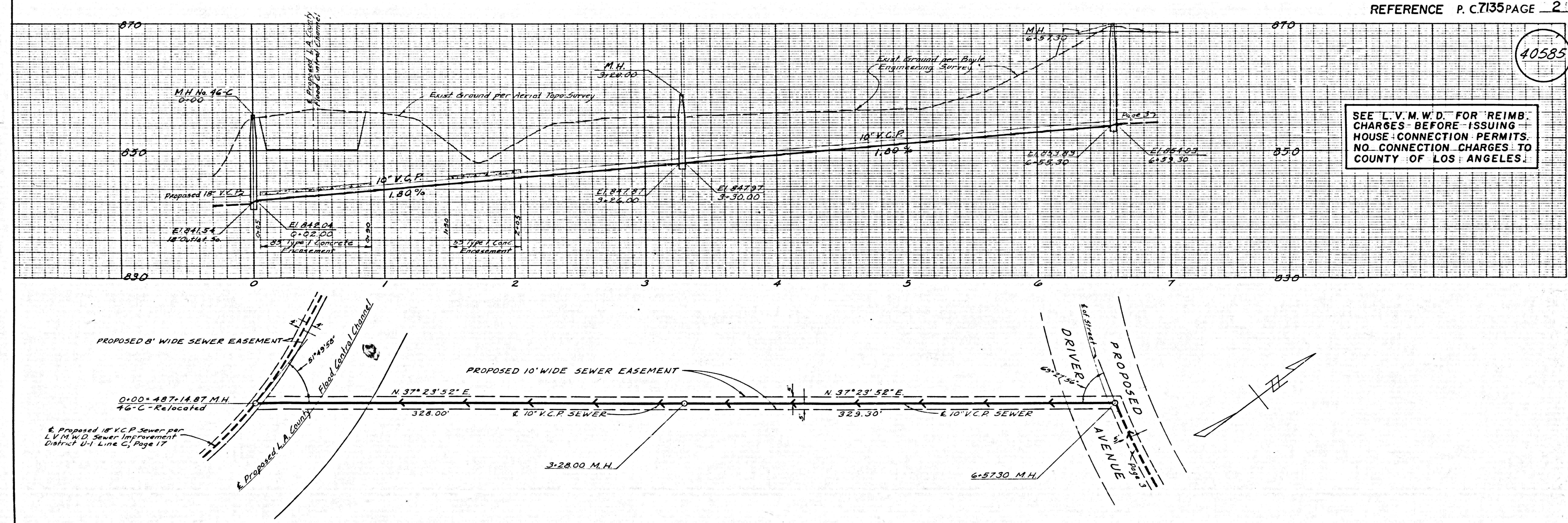
APPROVED FOR:
 LAS VIRGENES MUNICIPAL WATER DISTRICT

BY BOYLE ENGINEERING

BY *Boyle Engineering*
 OFFICE ENGINEER
 REG. C. E. NO. 12160

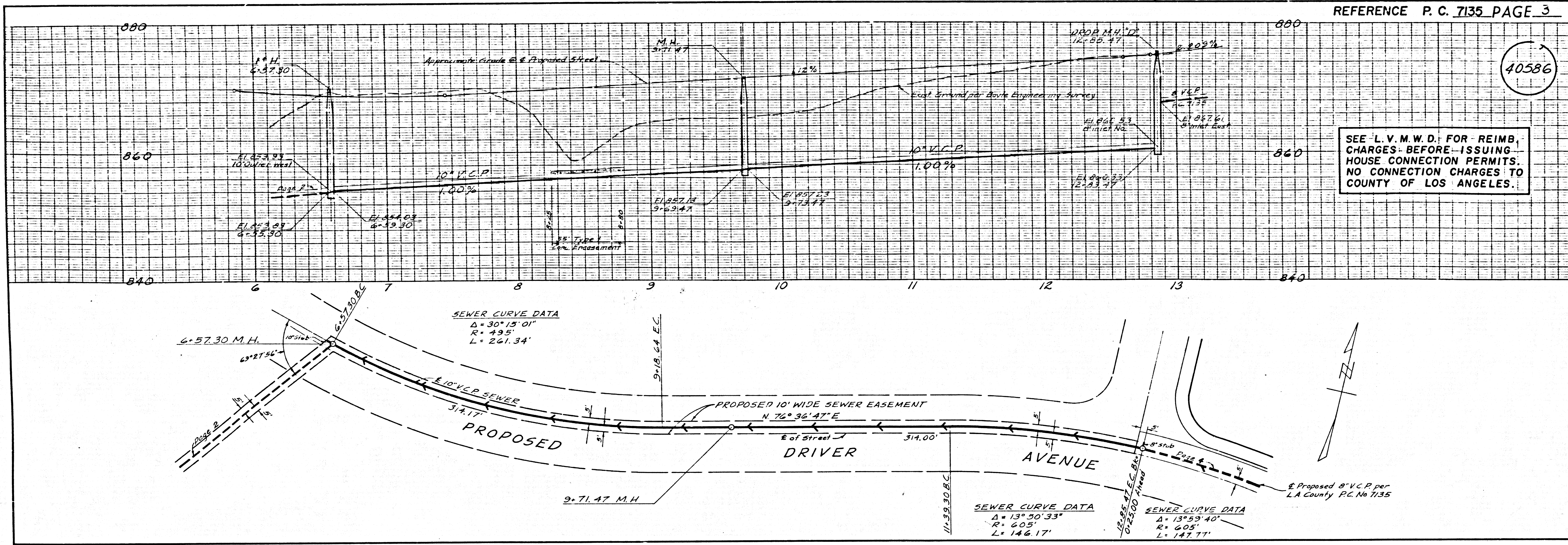
COLLECT CHARGES
 AS INDICATED

REFERENCE P. C. 7135 PAGE 2



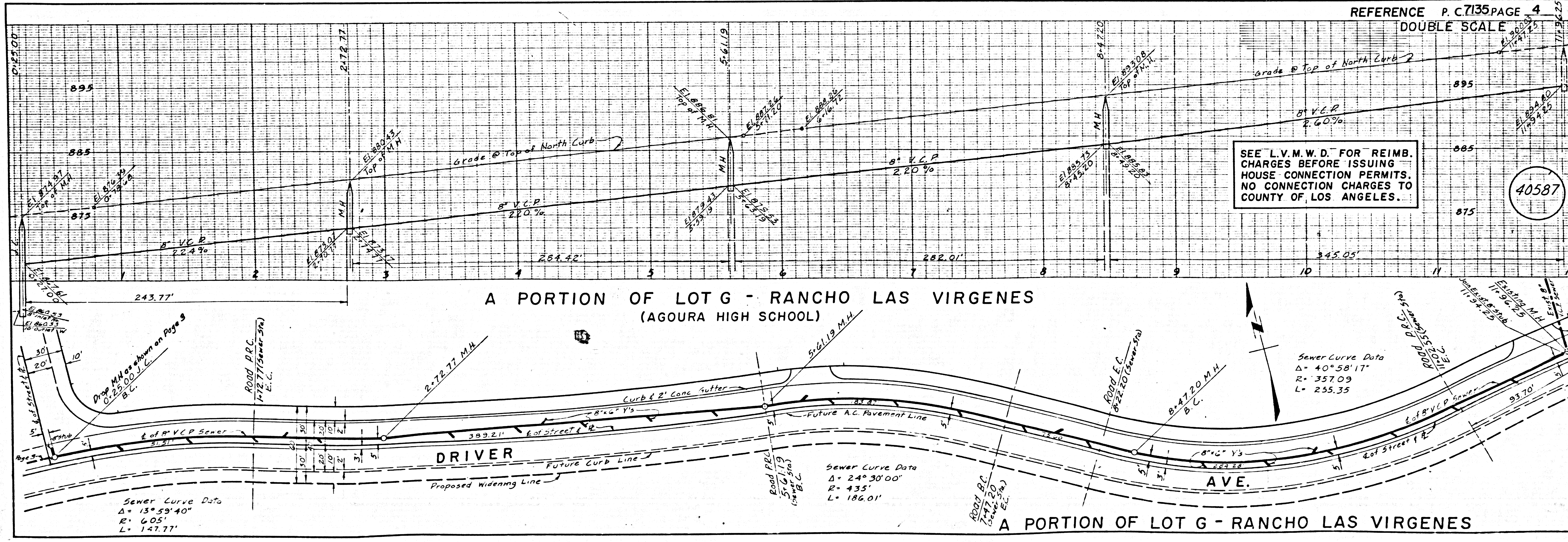
SEE L.V.M.W.D. FOR REIMB. CHARGES BEFORE ISSUING HOUSE CONNECTION PERMITS. NO CONNECTION CHARGES TO COUNTY OF LOS ANGELES.

40585



40586

DOUBLE SCALE



40587