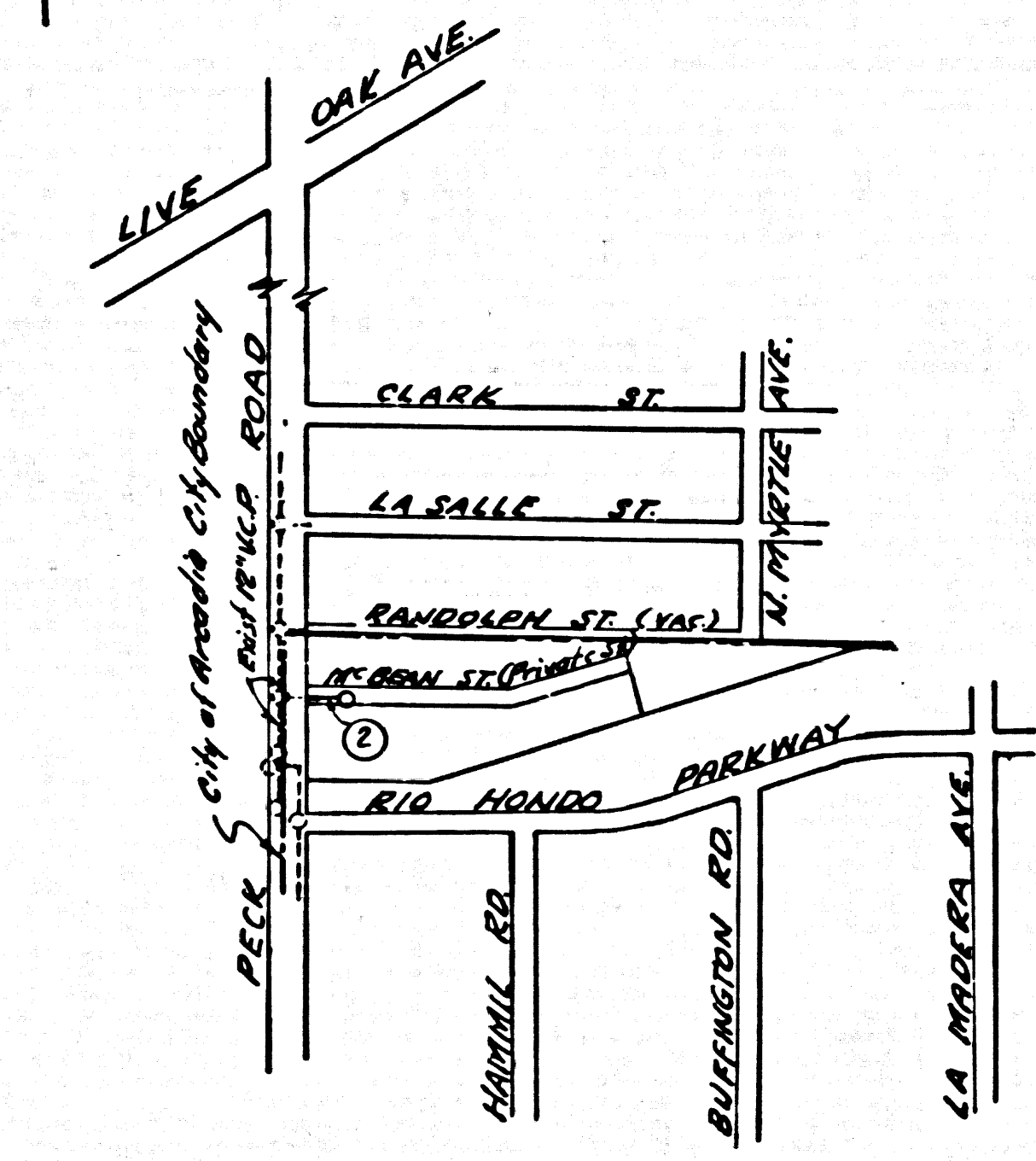


B.M. 56.161-A ELEV. 329.901  
 C.S. MON. WELL 2 19.5' EQL. PERK RD 217'  
 N/O Q/L LA SALLE ST (ENTRANCE TO  
 GRANHAM BRIDGE ROCK PLANT) MKD.  
 Q/L N. 13.5' S. S. 11.5' E. 11.5' S. 11.5' E.  
 QUAD. 19



INDEX MAP  
 Scale 1:600  
 PC. 7136

NO CONNECTIONS FOR THE DISPOSAL OF INDUSTRIAL WASTES SHALL BE MADE TO SEWERS SHOWN ON THESE DRAWINGS WITHOUT WRITTEN PERMISSION FROM THE CHIEF ENGINEER AND GENERAL MANAGER OF THE COUNTY SANITATION DISTRICTS.

APPROVED: E. S. Johnson DATE: 10-27-64  
 INDUSTRIAL WASTE DIVISION

TEMPLE CITY BLDG. DIST. NO.5

- NOTES:
1. PROVIDE STAKES ON THE PROPERTY LINE OR PROPERTY LINES PRODUCED AT RIGHT ANGLES TO THE SEWER LINE AT THE CENTER LINE OF EACH MANHOLE.
  2. NO REPRESENTATIVE OF THE COUNTY ENGINEER WILL SURVEY OR LAY OUT ANY PORTION OF THE WORK.
  3. THE PRIVATE ENGINEER SHALL FURNISH THE COUNTY ENGINEER WITH GRADE SHEETS AND STATIONING FOR ALL HOUSE LATERALS AND Y BRANCHES AND SHALL PROVIDE STAKES FOR THEM AT THESE PROPER LOCATIONS WITH STATIONING PLAINLY MARKED. ALL HOUSE LATERALS SHALL BE CONSTRUCTED IN A STRAIGHT ALIGNMENT AT RIGHT ANGLES FROM THE MAIN LINE SEWER EXCEPT AS SHOWN ON THE PLANS. HOUSE LATERALS FROM CHIMNEYS SHALL NOT HAVE AN ANGLE OF LESS THAN 45° WITH THE MAIN LINE SEWER. ANY CHANGE IN ALIGNMENT SHALL BE REQUESTED BY WRITING BY THE PRIVATE ENGINEER.
  4. THE PRIVATE ENGINEER SHALL FURNISH THE HOUSE LATERAL DEPTH AT THE PROPERTY LINE BELOW THE TOP OF CURB ELEVATION FOR EACH HOUSE LATERAL ON THE GRADE SHEET.
  5. NO REVISIONS SHALL BE MADE IN THESE PLANS WITHOUT THE APPROVAL OF THE COUNTY ENGINEER.
  6. THE CONTRACTOR SHALL NOTIFY THE CONSTRUCTION DIVISION BY TELEPHONE, MADISON 9-4747, EXT. 8151, AT LEAST TWENTY-FOUR HOURS BEFORE STARTING ANY WORK UNDER THIS CONTRACT.
  7. MANHOLES SHALL BE BRICK SEWER STRUCTURES PER S-104. PRECAST CONCRETE MANHOLES PER S-133 OR S-173 MAY BE USED AS AN ALTERNATE IN LOCATIONS APPROVED BY THE COUNTY ENGINEER.
  8. USE STANDARD MANHOLE FRAMES AND COVERS, S-4-77.
  9. MANHOLE TOPS IN UNIMPROVED RIGHTS-OF-WAY TO BE SIX INCHES ABOVE FINISHED GRADE.
  10. USE EXTRA STRENGTH PIPE. ALL PIPE IS STANDARD DEPTH EXCEPT AS NOTED.
  11. USE 6MM-8MM-80-MECHANICAL COMPRESSION JOINTS FOR ALL V.C.P. JOINTS PER SPEC. SEC. 36 8 48, 49.
  12. WHERE EVER GROUND WATER IS ENCOUNTERED DURING THE CONSTRUCTION OF THE SEWERS, THE V.C.P. JOINTS SHALL BE OF JOINT-LOCKING-NEE-SEALS-600-80-80-MECHANICAL COMPRESSION JOINTS PER SPEC. SEC. 36, 48 & 49.
  13. IF A POWER POLE IS WITHIN THREE FEET OF THE SEWER, THE SEWER SHALL BE ENCASED, PER S-173, CASE III, TWO FEET ON EITHER SIDE FROM THE POINT OF INTERFERENCE.
  14. IF DURING THE COURSE OF CONSTRUCTION IT IS DETERMINED THAT THERE IS LESS THAN FOUR FEET OF COVER OVER THE TOP OF A MAIN LINE OR HOUSE LATERAL V.C.P. SEWER WHICH IS NOT INDICATED ON THE PLANS, THE PIPE SHALL BE ENCASED PER S-173, CASE III, UNLESS OTHERWISE APPROVED BY THE COUNTY ENGINEER.
  15. HOUSE LATERALS TO BE CONSTRUCTED WITH INVERTS AT PROPERTY LINE... 6... FEET BELOW GRADE OF CENTERLINE.
  16. RESURFACE ALL TRENCHES WITHIN PAVED AREAS TO MEET L.A. COUNTY ROAD DEPT. OR CALIFORNIA STATE HIGHWAY REQUIREMENTS IN ACCORDANCE WITH PERMITS.
  17. FOR ALLOWABLE USAGE TEST USE FORMULA NO. 2... 2... SPEC. SEC. 54.
  18. ALL STATE AND LOCAL TRAFFIC SAFETY ORDERS WILL BE RIGIDLY ENFORCED.
  19. SEWER CONNECTION APPROVED CONDITIONS UPON NO PROPER CONNECTIONS BEING MADE UNTIL CONNECTION CHARGES ARE PAID TO CITY OF ARCADIA AND APPROVAL GIVEN BY DIRECTOR OF PUBLIC WORKS. A PLUS WILL BE MAINTAINED IN EXISTING V.C.P. @ OPEN END UNTIL THE CITY OF ARCADIA IS PAID UNTIL PAYMENT OF CHARGES & APPROVAL IS GIVEN.

NOTE:  
 NO CONNECTION PERMITS SHALL BE ISSUED UNTIL SANITARY SEWER RIGHT OF WAY IS OBTAINED.

COLLECT CHARGES AS INDICATED  
 W. G. Jones 10/18/64

Approved Conditionally See Note #19  
 City of Arcadia  
 Director of Public Works

PROFILE ALIGNMENT AND GRADE OF P.C. 7136  
 SANITARY SEWERS PAGE 1  
 TO BE CONSTRUCTED IN

MCBEAN DRIVE (PRIVATE ST.)  
 PRIVATE CONTRACT NO. 7136

W.S. 46, B-3  
 1 SHEETS; 2 PAGES  
 SCALE: VERT. 1"=4' HORIZ. 1"=40' OCTOBER, 1964

PREPARED IN THE OFFICES OF  
 HAROLD L. JOHNSON ENGINEERING  
 Harold L. Johnson  
 REG. C. E. NO. 7668

FOR LEGEND SEE PLAN NO. S-6-64

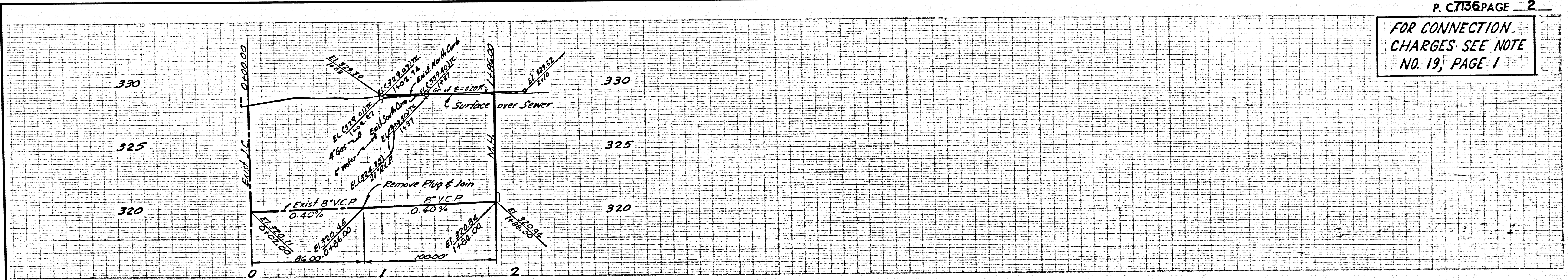
NOTE:  
 GRADES TO WHICH THIS IMPROVEMENT IS TO BE CONSTRUCTED ARE SHOWN ON PLANS AND PROFILES. GRADE POINTS FOR TOP OF CURBS, CENTER LINE OF STREETS, OR CENTER LINE OF ALLEYS ARE SHOWN BY CIRCLES ON PROFILES. AT ALL POINTS BETWEEN DESIGNATED POINTS THE GRADE SHALL BE ESTABLISHED SO AS TO CONFORM TO A STRAIGHT LINE DRAWN BETWEEN SAID DESIGNATED POINTS. ELEVATIONS ARE IN FEET ABOVE U.S.C. & G.S. SEA LEVEL DATUM OF 1929. THE DRAWING AND THE DATA HEREON ARE HEREBY MADE A PART OF THE SPECIFICATIONS. WORK SHALL BE CONSTRUCTED ACCORDING TO STANDARD SPECIFICATIONS DATED 7/25/64, ON FILE IN THE OFFICE OF THE COUNTY ENGINEER AND SHALL BE PROTECTED ONLY IN THE PRESENCE OF THE COUNTY ENGINEER. BEFORE WORK CAN BE STARTED, THE CONTRACTOR MUST OBTAIN A PERMIT TO EXCAVATE IN COUNTY STREETS FROM THE L.A. COUNTY ROAD DEPT., DISTRICT OFFICE NO. 2, AND PAY A FEE TO THE COUNTY ENGINEER, ROOM 309, COUNTY ENGINEERING BUILDING, 108 WEST SECOND STREET OR SAN GABRIEL REGIONAL OFFICE, SUFFICIENT TO COVER THE COST OF CONSTRUCTION INSPECTION AND SECOND PLANS. APPROVAL OF THIS PLAN BY THE COUNTY OF LOS ANGELES DOES NOT CONSTITUTE A REPRESENTATION AS TO THE ACCURACY OF THE LOCATION OF OR THE EXISTENCE OR NON-EXISTENCE OF ANY UNDERGROUND UTILITY PIPE, OR STRUCTURE WITHIN THE LIMITS OF THE PROJECT. THIS NOTE APPLIES TO ALL PAGES. IF WORK IS TO BE DONE IN A STATE HIGHWAY, A PERMIT MUST BE OBTAINED FROM THE STATE OF CALIFORNIA, DIVISION OF HIGHWAYS, 130 SOUTH SPRING STREET, LOS ANGELES, CALIFORNIA.

COUNTY OF LOS ANGELES, CALIFORNIA  
 JOHN A. LAMBIE, COUNTY ENGINEER J. D. PARKHURST, CHIEF ENGINEER  
 CO. SAN. DIST. NO. 5  
 APPROVED BY: [Signature] ASSISTANT SANITATION ENGINEER APPROVED BY: [Signature] OFFICE ENGINEER

SUBMITTED BY: [Signature] REGIONAL ENGINEER  
 CHECKED BY: [Signature] REG. C. E. NO. 7136

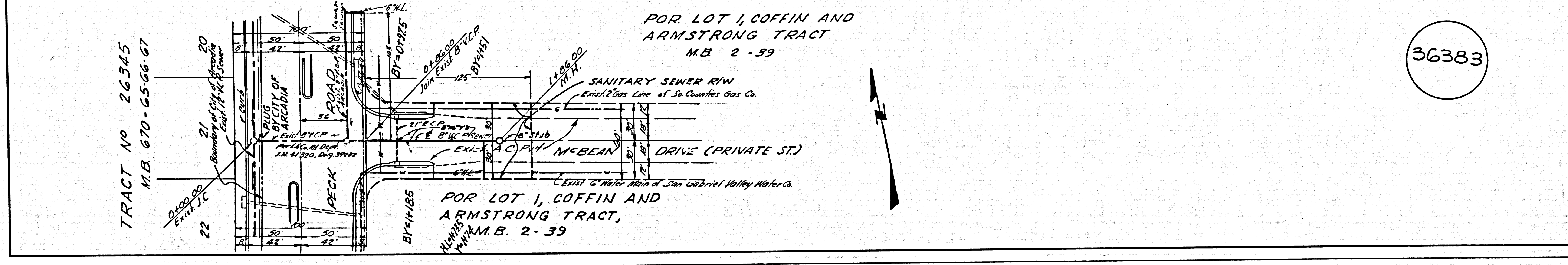
36382

J.N. 0364.21



P. C. 7136 PAGE 2  
 FOR CONNECTION CHARGES SEE NOTE NO. 19, PAGE 1

36383



POR LOT 1, COFFIN AND ARMSTRONG TRACT  
 M.B. 2-39

POR LOT 1, COFFIN AND ARMSTRONG TRACT,  
 M.B. 2-39