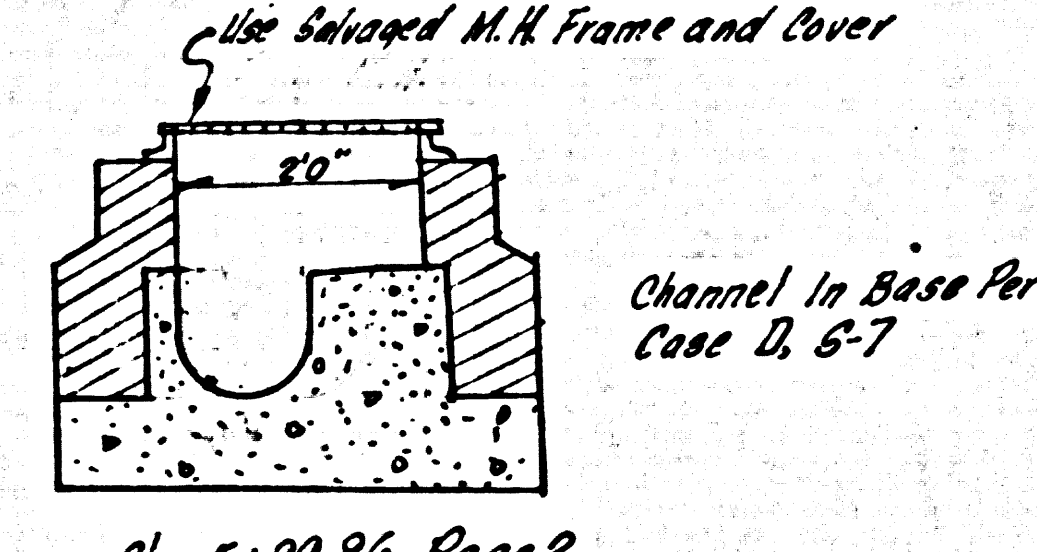


B.M. SY-5329 ELEV 1175.064'
 R.D. B.N. Tag in W. wing wall Conc. of
 Ch. Cut 3' 11" W. of E. end of S. 21' W. W. W.
 approx. 0.25 Mullholland Hwy. S 1/4 mi.
 S. 1/4 int. Mullholland Drive and Mullholland Hwy.
 Malibu QUAD. 19 60

Revision: Rebuilt Sewer On Mullholland Highway From
 S. 1/4 of Lot 55 to S. 1/4 of Lot 56. And Changed
 Location of M.H. At Edgingham Ave. & Mullholland Highway
 from S. 1/4 of Mullholland Highway to S. 1/4 of
 Mullholland Highway. See Table 5.
 J. G. ... 10/30/1965

Revision No. 1 Addition & Approval of Page 2
 Increased Pipe Size On Mullholland From 10" to 12"
 Checked By: Edward J. Valdez April 8, 1965
 R.C.E. 10653
 Approved By: Richard S. Keller April 8, 1965
 Assistant Sanitation Engineer
 Los Virgenes Municipal Water District
 Approved By: Paul S. Campbell April 8, 1965
 Office Engineer R.C.E. 15325

NOTE: ISSUE NO HOUSE
 CONNECTION PERMITS
 UNTIL MULLWOOD WATER
 RECLAMATION PLANT IS
 ENLARGED TO SUFFICIENT
 CAPACITY TO ACCEPT SEWAGE
 FROM TRACT 29150.
 SEE MAIN OFFICE.



INDEX MAP
 TRACT NO. 29150
 P.C. 7148
 SCALE: 1"=600'

DOUBLE SCALE
 CALABASAS BLDG. DIST. NO. 9.1

PROFILE ALIGNMENT AND GRADE OF
 SANITARY SEWERS PAGE 1
 TO BE CONSTRUCTED IN

TRACT NO. 29150
 PRIVATE CONTRACT NO. 7148

W.S. 60
 10 SHEETS, 20 PAGES
 SCALE: HORIZ. 1"=40' VERT. 1"=4'
 APRIL, 1964
 PREPARED BY THE OFFICES OF
 VANTAGE ENGINEERING COMPANY
 By: John G. Miles
 REG. E. NO. 10377

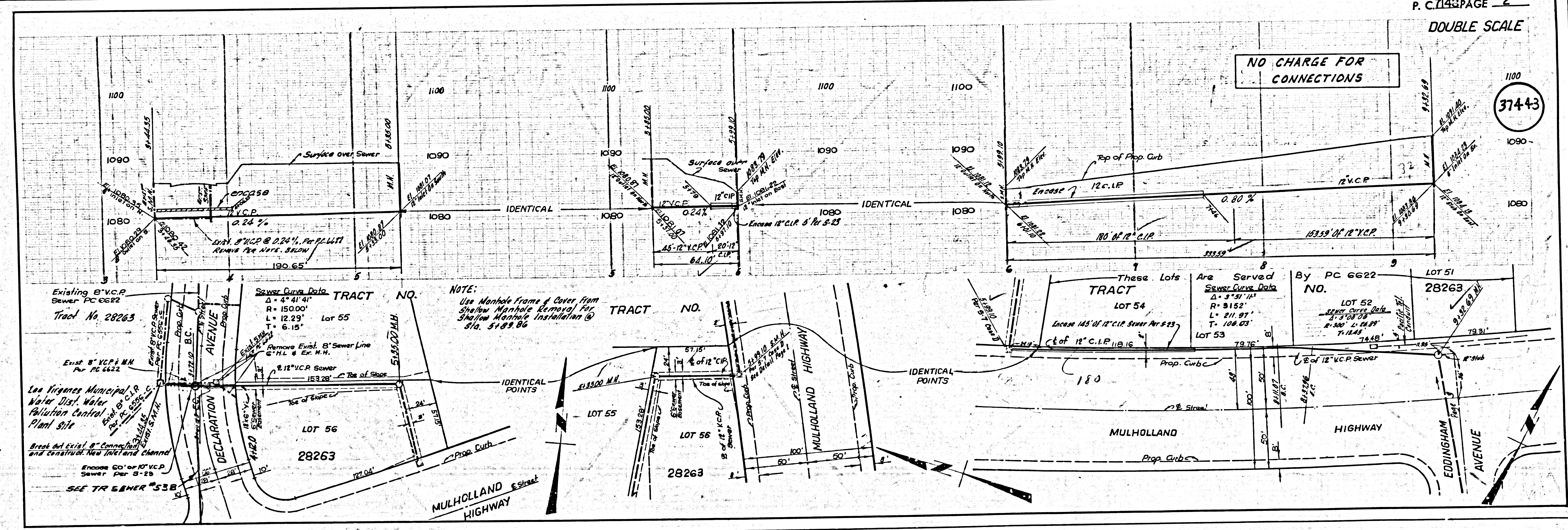
37442

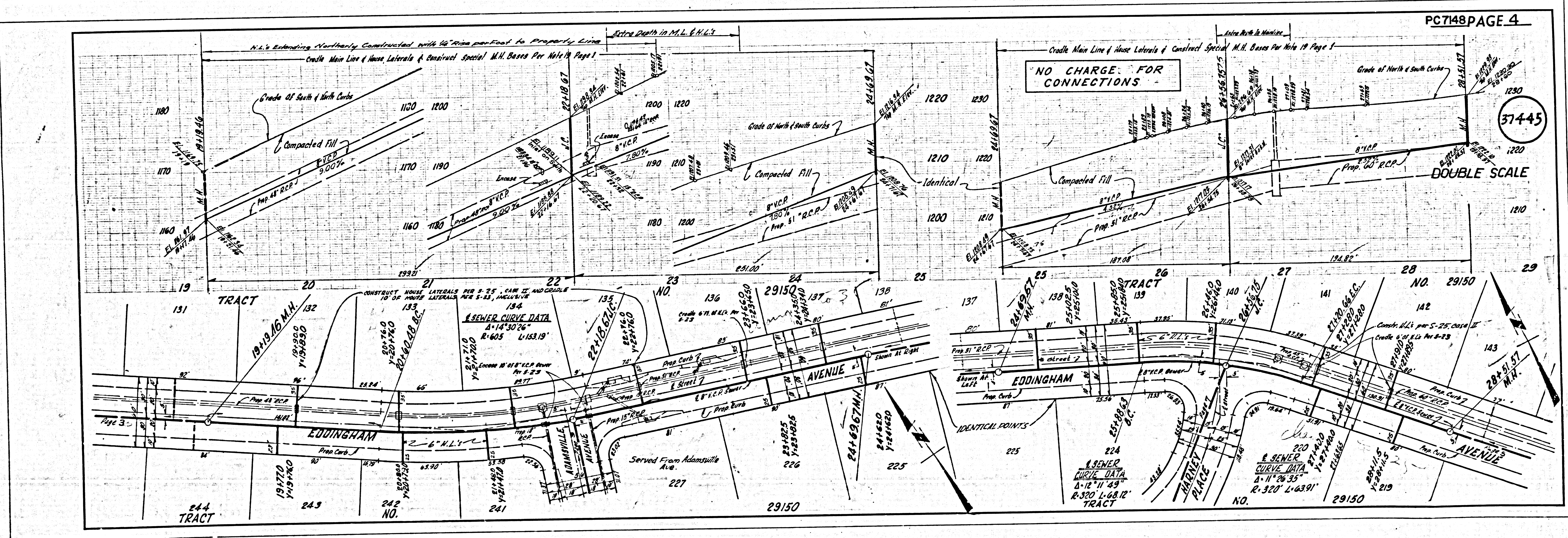
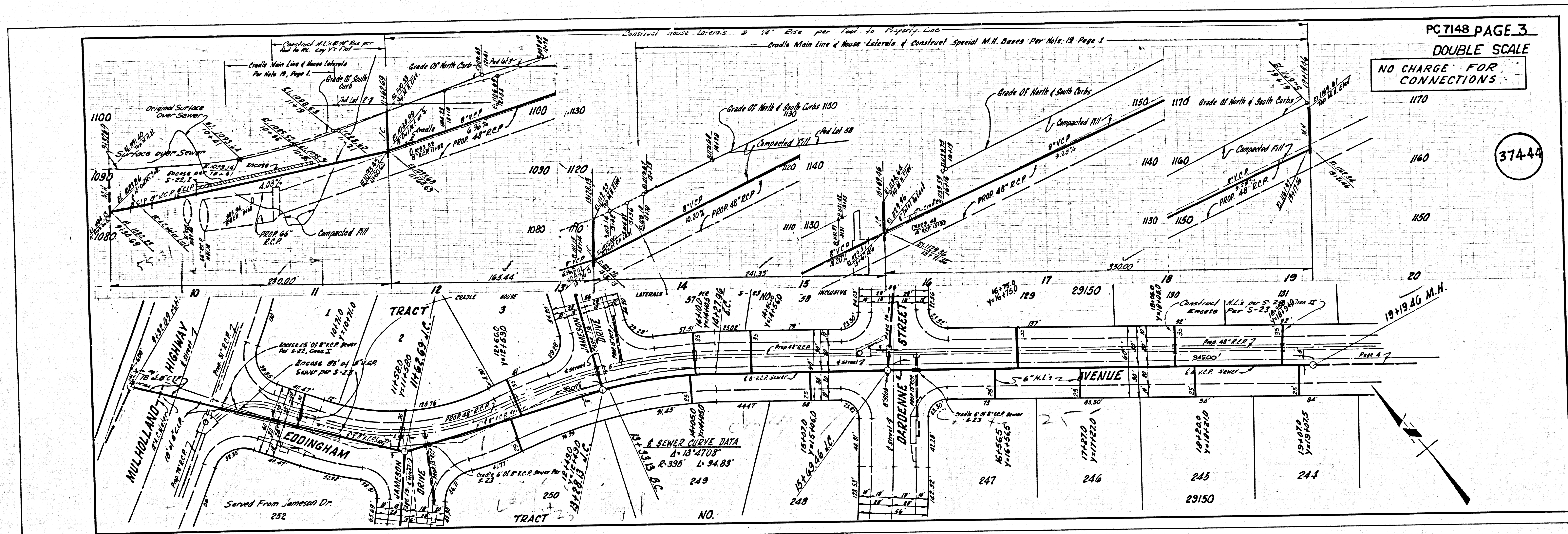
- NOTES:
1. PROVIDE STAKES ON THE PROPERTY LINE OR PROPERTY LINES PRODUCED AT RIGHT ANGLES TO THE SEWER LINE AT THE CENTER LINE OF EACH MANHOLE.
 2. NO REPRESENTATIVE OF THE COUNTY ENGINEER WILL SURVEY OR LAY OUT ANY PORTION OF THE WORK.
 3. THE PRIVATE ENGINEER SHALL FURNISH THE COUNTY ENGINEER WITH GRADE SHEETS AND STATIONING FOR ALL HOUSE LATERALS AND BRANCHES AND SHALL PROVIDE STAKES FOR THEM AT THEIR PROPER LOCATIONS WITH STATIONING PLAINLY MARKED. ALL HOUSE LATERALS SHALL BE CONSTRUCTED IN A STRAIGHT ALIGNMENT AT RIGHT ANGLES FROM THE MAIN LINE SEWER EXCEPT AS SHOWN ON THE PLANS. HOUSE LATERALS FROM CHIMNEYS SHALL NOT HAVE AN ANGLE OF LESS THAN 45° WITH THE MAIN LINE SEWER. ANY CHANGE IN ALIGNMENT SHALL BE REQUESTED IN WRITING BY THE PRIVATE ENGINEER.
 4. THE PRIVATE ENGINEER SHALL FURNISH THE HOUSE LATERAL DEPTH AT THE PROPERTY LINE BELOW THE TOP OF CURB ELEVATION FOR EACH HOUSE LATERAL ON THE GRADE SHEET.
 5. NO REVISIONS SHALL BE MADE IN THESE PLANS WITHOUT THE APPROVAL OF THE COUNTY ENGINEER.
 6. THE CONTRACTOR SHALL NOTIFY THE CONSTRUCTION DIVISION BY TELEPHONE, MADISON 9-4747, EXT. 8181, AT LEAST TWENTY-FOUR HOURS BEFORE STARTING ANY WORK UNDER THIS CONTRACT.
 7. MANHOLES SHALL BE BRICK SEWER STRUCTURES PER S. 5, 3' PRECAST CONCRETE MANHOLES PER S. 5-5' OR S. 5-6' MAY BE USED AS AN ALTERNATE IN LOCATIONS APPROVED BY THE COUNTY ENGINEER.
 8. USE STANDARD MANHOLE FRAMES AND COVERS, 5' 1/8", EXCEPT AS NOTED.
 9. USE MAINHOLE TOPS IN UNIMPROVED RIGHTS-OF-WAY TO BE SIX INCHES ABOVE FINISHED GRADE.
 10. USE EXTRA STRENGTH PIPE, ALL PIPE IS STANDARD STIFF EXCEPT AS NOTED.
 11. USE MECHANICAL COMPRESSION JOINTS FOR ALL V.C.P. JOINTS PER SPEC., SECS. 14, 48, & 49.
 12. WHERE EVER GROUND WATER IS ENCOUNTERED DURING THE CONSTRUCTION OF THE SEWERS, THE V.C.P. JOINTS SHALL BE OF JOINT COMPOUND PER SPEC., SECS. 33 & 48, OR MECHANICAL COMPRESSION JOINTS PER SPEC., SEC. 34.
 13. IF A POWER POLE IS WITHIN THREE FEET OF THE SEWER, THE SEWER SHALL BE ENCASED, PER S. 2-3' ... TWO FEET ON EITHER SIDE FROM THE POINT OF INTERFERENCE.
 14. IF DURING THE COURSE OF CONSTRUCTION IT IS DETERMINED THAT THERE IS LESS THAN FOUR FEET OF COVER OVER THE TOP OF A MAIN LINE OR HOUSE LATERAL V.C.P. SEWER WHICH IS NOT INDICATED ON THE PLANS, THE PIPE SHALL BE ENCASED PER S. 2-3' UNLESS OTHERWISE APPROVED BY THE COUNTY ENGINEER.
 15. HOUSE LATERALS TO BE CONSTRUCTED WITH INVERTS AT PROPERTY LINE ... 6" FEET BELOW CURB GRADE EXCEPT AS NOTED.
 16. RESURFACE ALL TRENCHES WITHIN PAVED AREAS TO MEET L.A. COUNTY ROAD DEPT. OR CALIFORNIA STATE HIGHWAY REQUIREMENTS IN ACCORDANCE WITH PERMITS.
 17. FOR ALLOWABLE USAGE TEST USE FORMULA NO. ... SPEC., SEC. 54.
 18. SPECIFICATIONS DATED MAY 24, 1962 APPLY IN THE CONSTRUCTION OF THIS PROJECT.
 19. (a) NO CONSTRUCTION WILL BE PERMITTED IN FILLED AREAS UNLESS ACCEPTABLE CERTIFICATION IS SUBMITTED TO THE CONSTRUCTION DIVISION OF THE COUNTY ENGINEER'S DEPARTMENT THAT RELATIVE COMPACTION IS GREATER THAN 90%.
 - (b) IF COMPACTION IS LESS THAN 90% THE SEWER MUST BE CRADLED AS SHOWN ON THE PER S-23' ... AND SPECIAL MANHOLE BASES CONSTRUCTED AS SHOWN ON THE PLANS PER SPEC., SEC. 58 & 5-14.
 - (c) IF COMPACTION IS 90% OR GREATER CRADLING & SPECIAL M.H. BASES ARE NOT REQUIRED.
 20. ALL STATE AND LOCAL TRENCH SAFETY ORDERS WILL BE RIGIDLY ENFORCED.
 21. WHEN STATIONS ARE SHOWN AT THE END OF HOUSE LATERALS, THE LOCATION OF SUCH LATERALS SHALL NOT BE MOVED ABOVE THE STATIONS INDICATED.

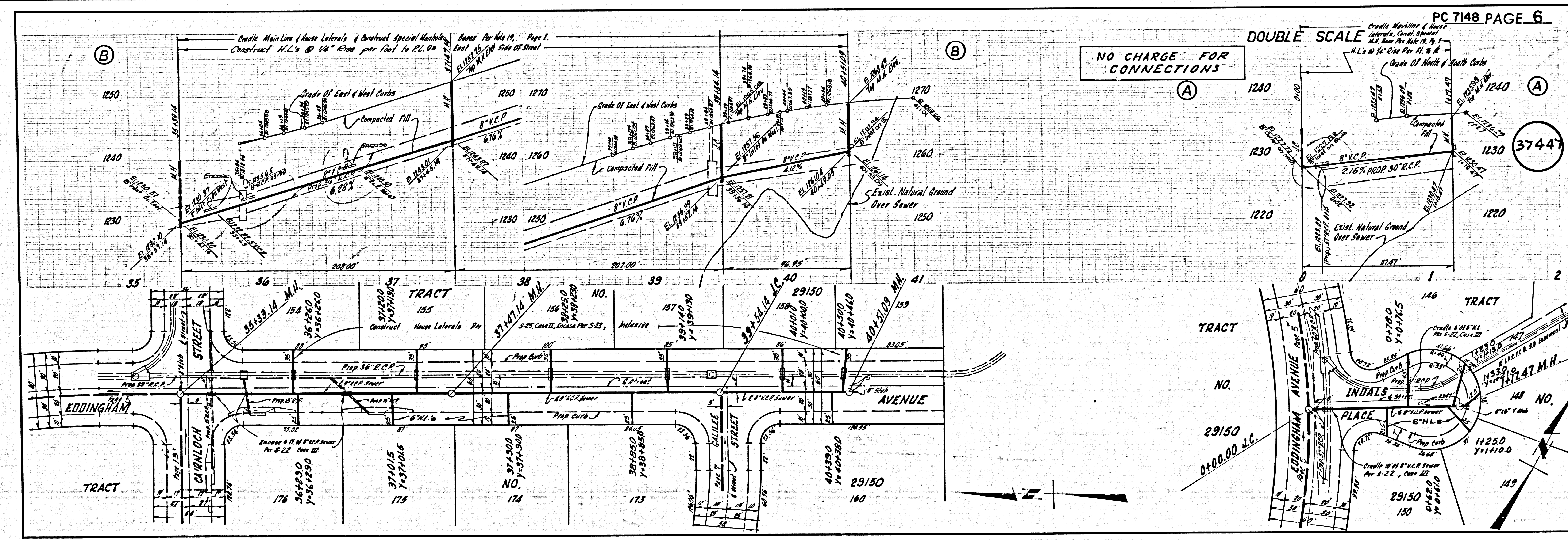
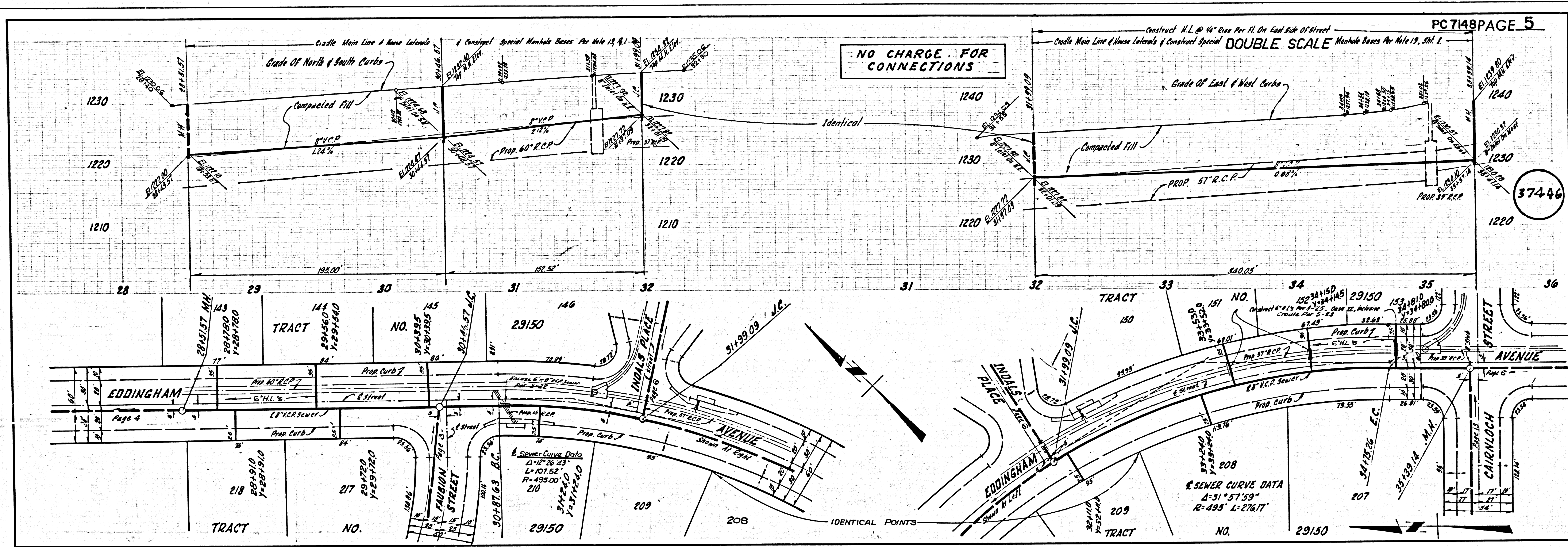
COLLECT CHARGES
 AS INDICATED
Ed J. Valdez 10/65

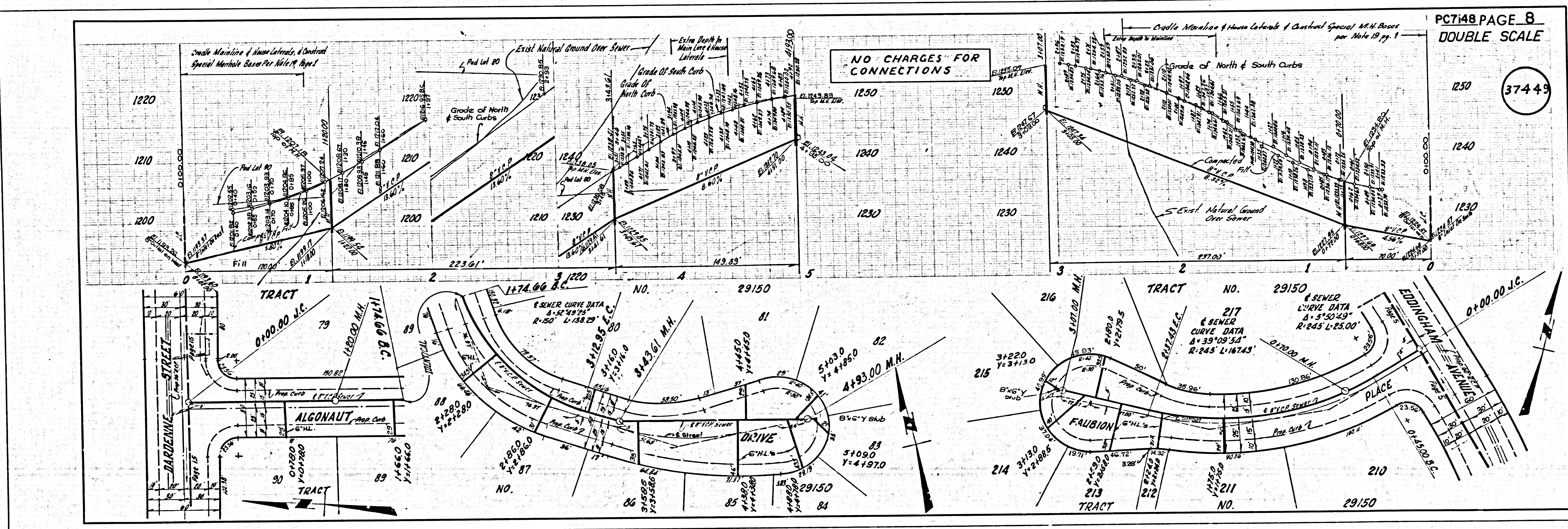
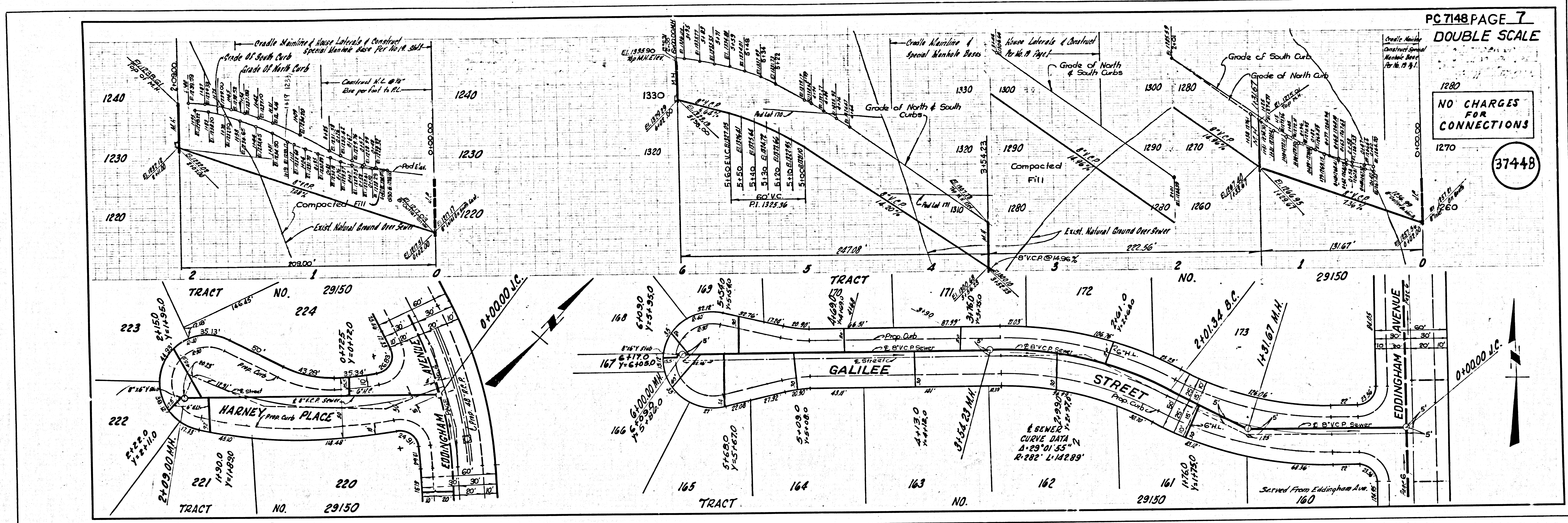
NOTE:
 GRADES TO WHICH THIS IMPROVEMENT IS TO BE CONSTRUCTED ARE SHOWN ON PLANS AND PROFILE. GRADE POINTS FOR TOP OF CURB, CENTER LINE OF STREETS, OR CENTER LINE OF ALLEYS ARE SHOWN BY CIRCLES ON PROFILE. AT ALL POINTS BETWEEN DESIGNATED POINTS THE GRADE SHALL BE ESTABLISHED SO AS TO COMFORM TO A STRAIGHT LINE DRAWN BETWEEN SAID DESIGNATED POINTS. ELEVATIONS ARE IN FEET ABOVE U.S.C. & G.S. MEAN SEA LEVEL DATUM OF 1929. THE DRAWING AND THE DATA HEREON ARE HEREBY MADE A PART OF THE SPECIFICATIONS. WORK SHALL BE CONSTRUCTED ACCORDING TO STANDARD SPECIFICATIONS DATED MAY 22, 1962, ON FILE IN THE OFFICE OF THE COUNTY ENGINEER AND SHALL BE PROSECUTED IN THE PRESENCE OF THE COUNTY ENGINEER. BEFORE WORK CAN BE STARTED, THE CONTRACTOR MUST OBTAIN A PERMIT TO EXCAVATE IN COUNTY STREETS FROM THE L.A. COUNTY ROAD DEPT., DISTRICT OFFICE NO. ... AND PAY A FEE TO THE COUNTY ENGINEER, ROOM 300, COUNTY ENGINEER'S BUILDING, 100 WEST SECOND STREET OR PHIL YERGEN, REGIONAL OFFICE, SUFFICIENT TO COVER THE COST OF CONSTRUCTION INSPECTION AND RECORD PLANS. APPROVAL OF THIS PLAN BY THE COUNTY OF LOS ANGELES DOES NOT CONSTITUTE A REPRESENTATION AS TO THE ACCURACY OF THE LOCATION OF OR THE EXISTENCE OR NON-EXISTENCE OF ANY UNDERGROUND TRAFFIC PIPE, OR STRUCTURE WITHIN THE LIMITS OF THIS PROJECT. THIS NOTE APPLIES TO ALL PAGES. IF WORK IS TO BE DONE IN A STATE HIGHWAY, A PERMIT MUST BE OBTAINED FROM THE STATE OF CALIFORNIA, DIVISION OF HIGHWAYS, 120 SOUTH SPRING STREET, LOS ANGELES, CALIFORNIA.

COUNTY OF LOS ANGELES, CALIFORNIA
 JOHN A. LAMBE, COUNTY ENGINEER
 APPROVED BY: Richard S. Keller ASSISTANT SANITATION ENGINEER
 APPROVED BY: John G. Miles OFFICE ENGINEER 10-9-71
 SUBMITTED BY: John G. Miles REGIONAL ENGINEER
 CHECKED BY: Edward J. Valdez REG. E. NO. 10653
 J. N. 0364.27

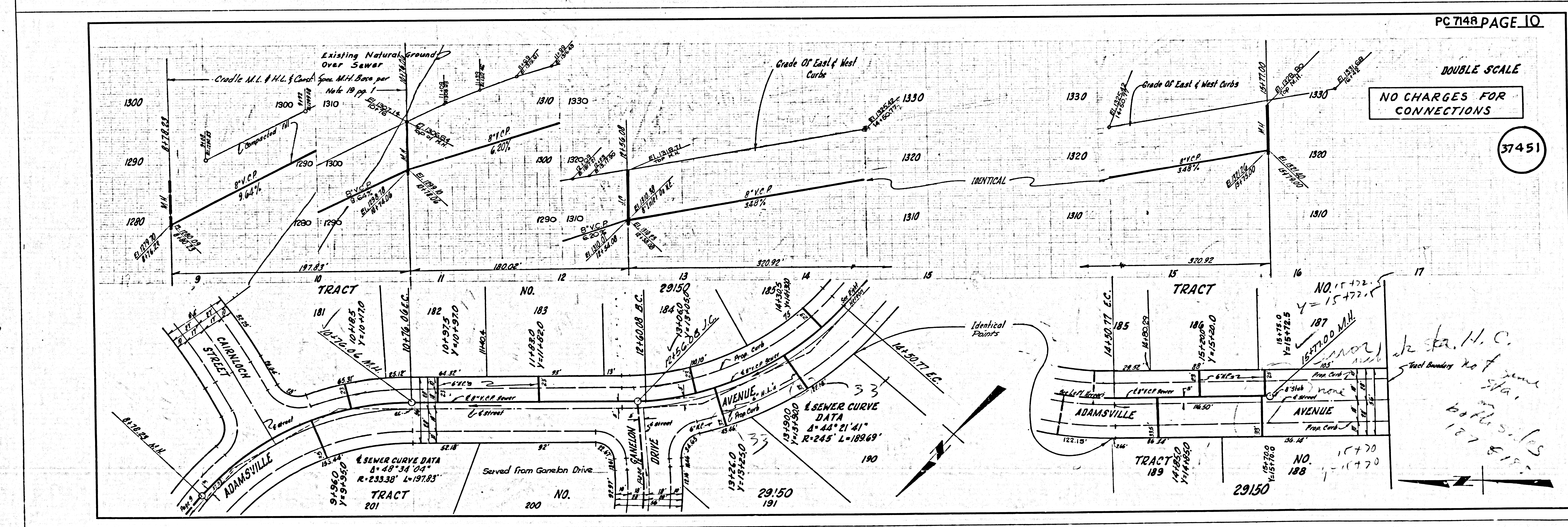
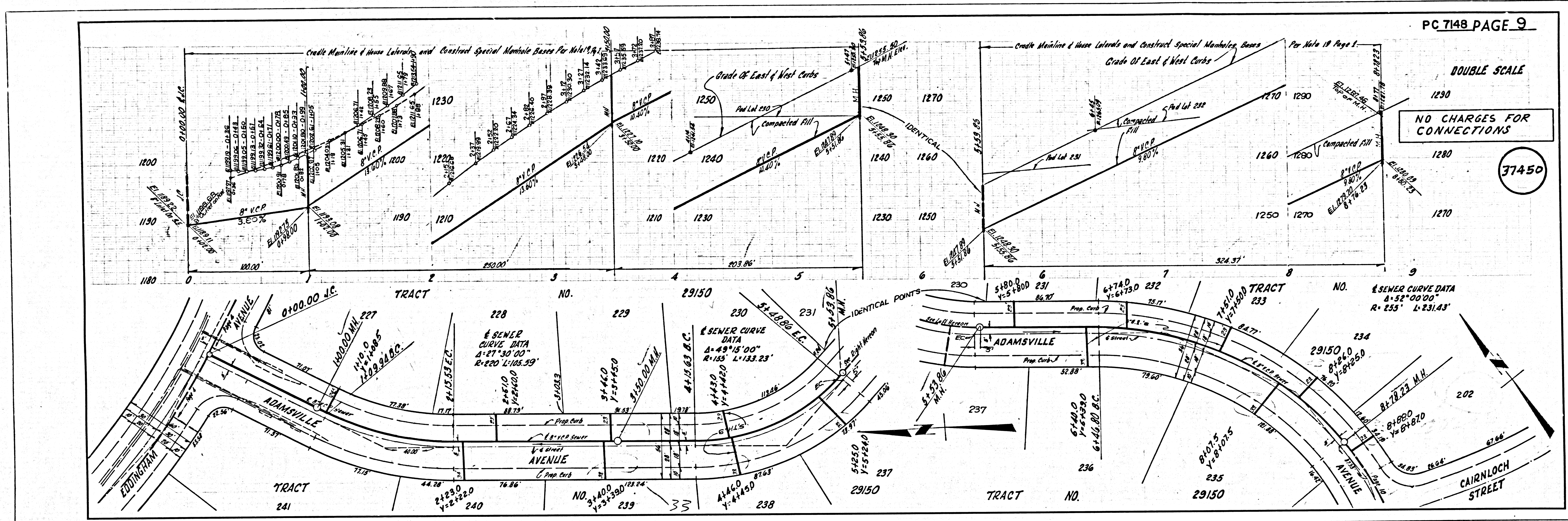


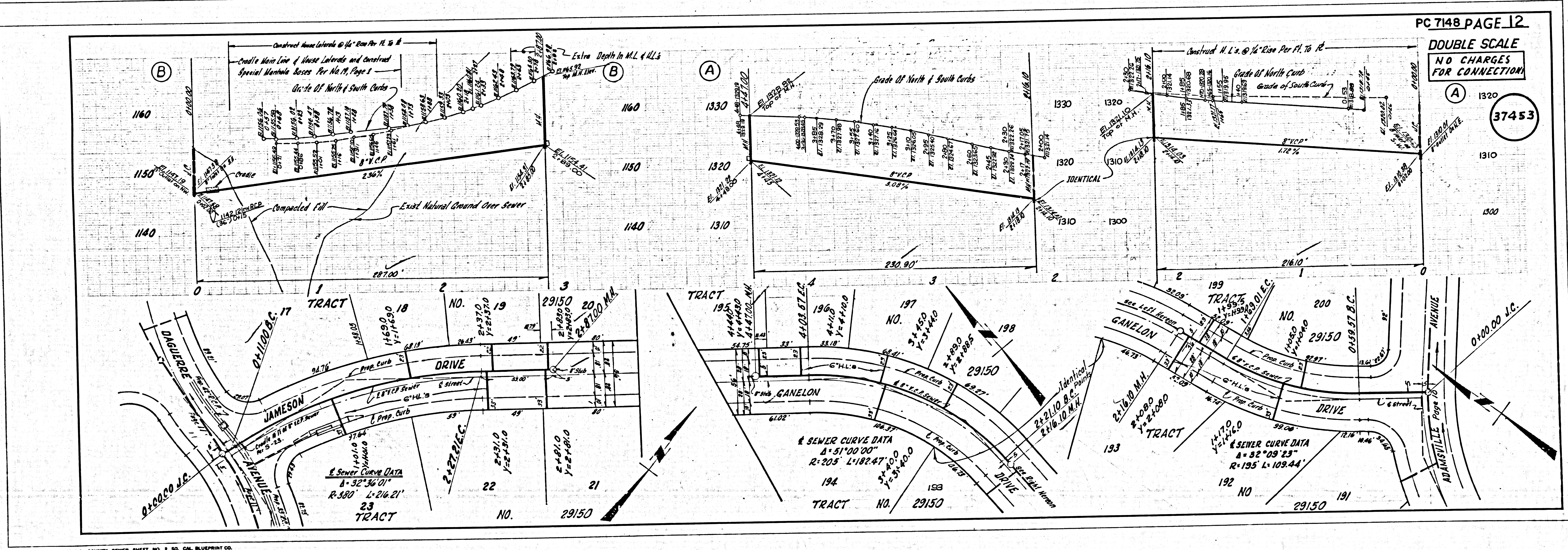
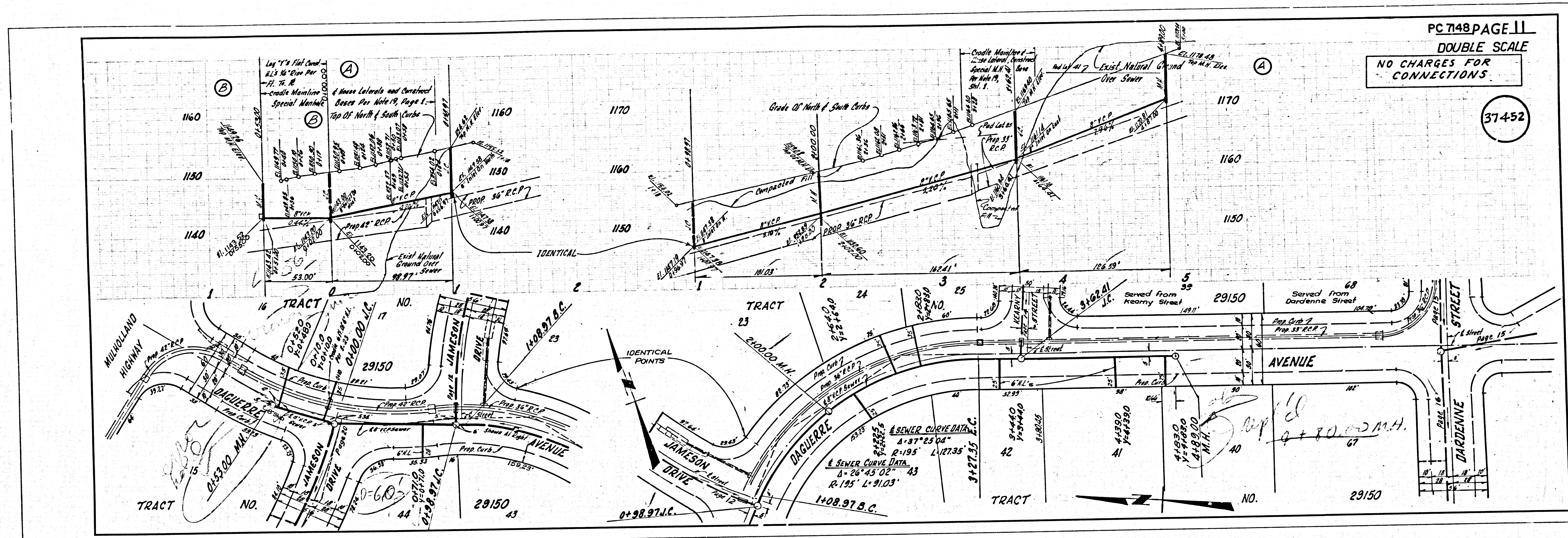


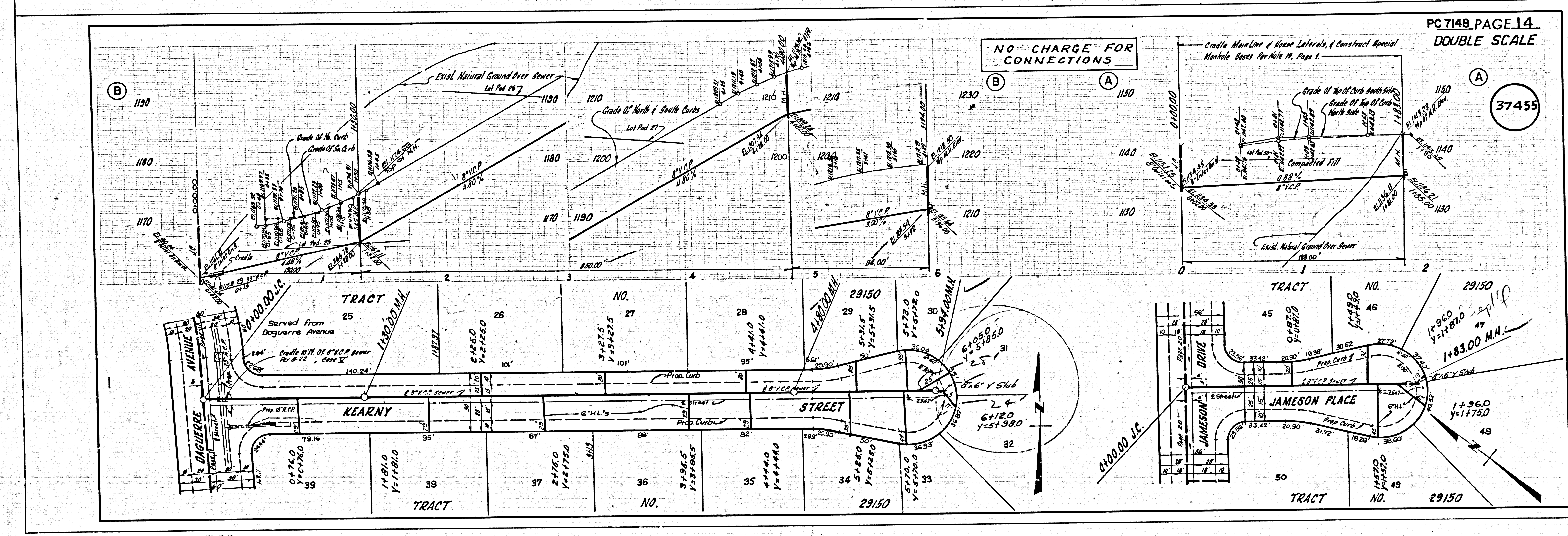
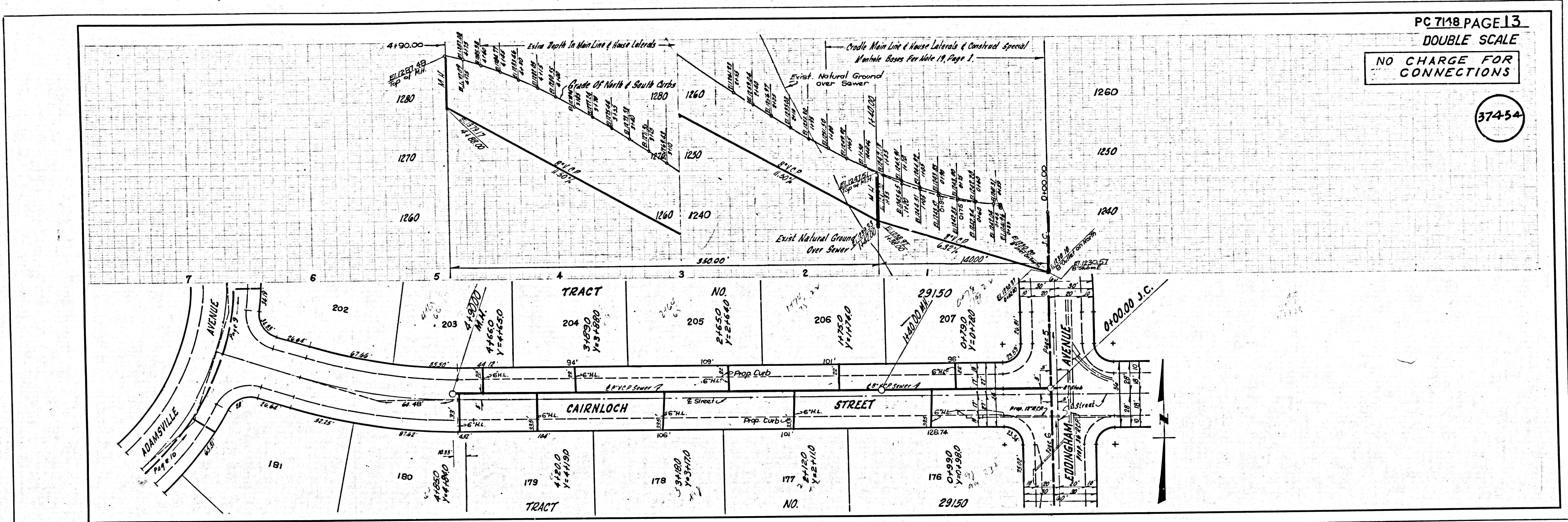


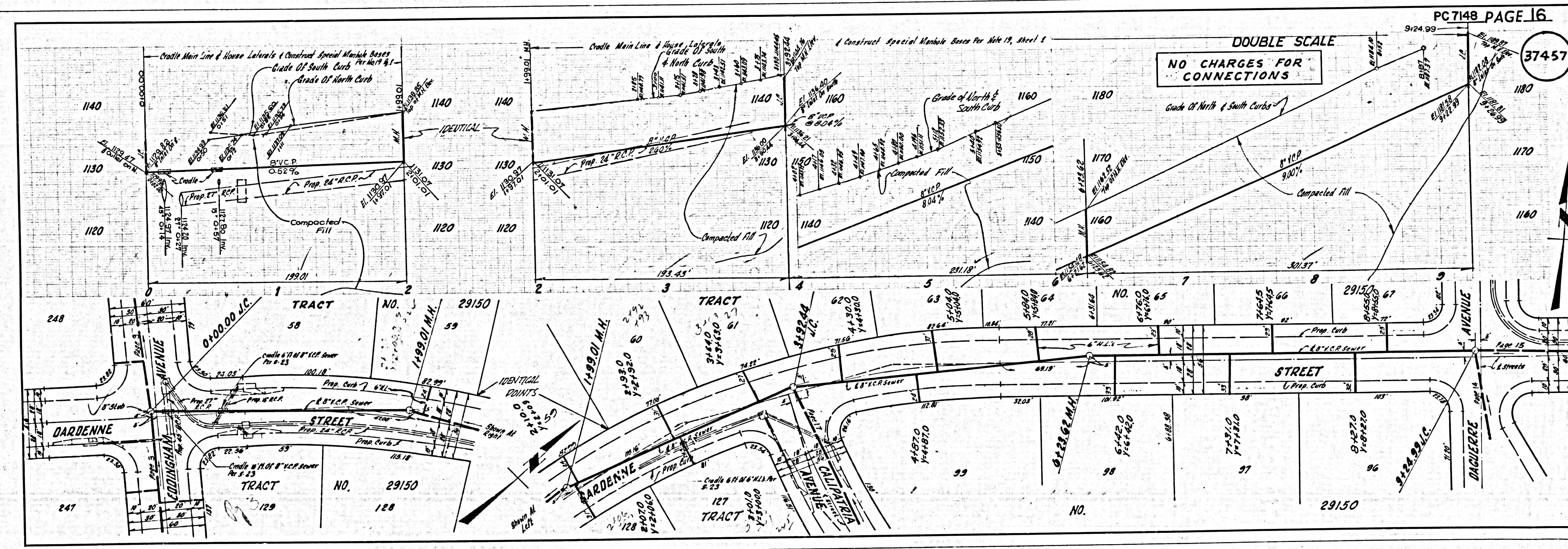
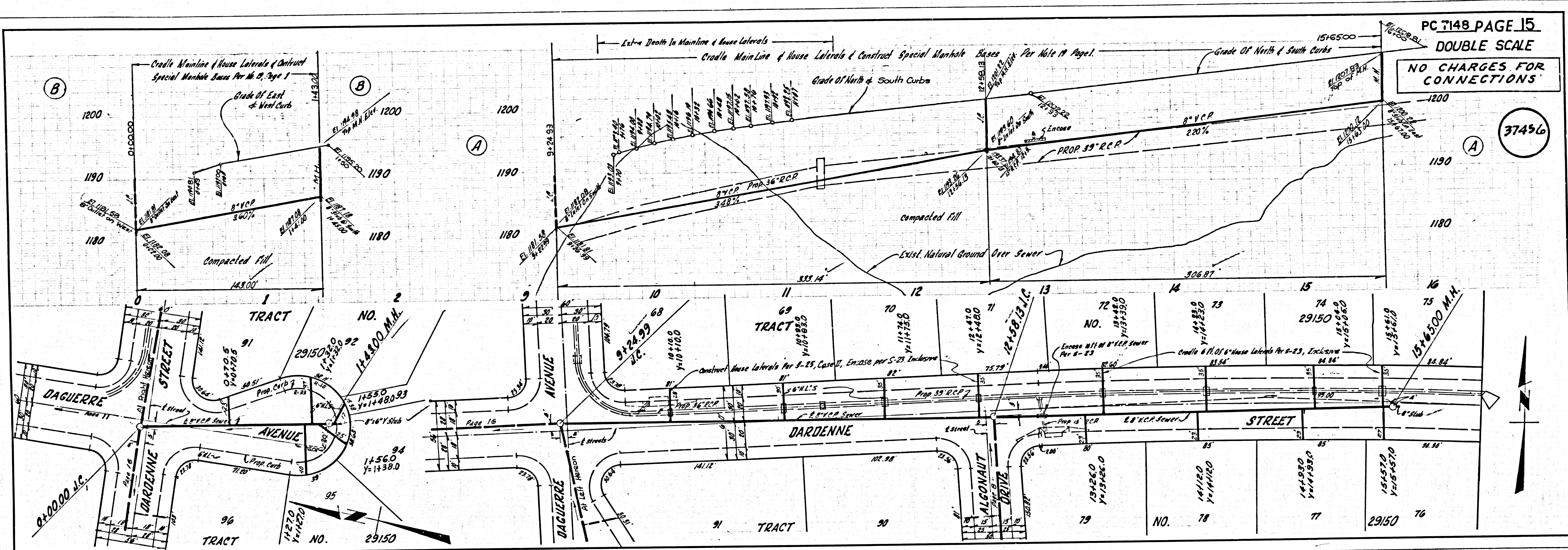


U.S.G. & THE L.A. COUNTY SHERIFF DEPT. NO. 1 ENGINEERING SERVICE

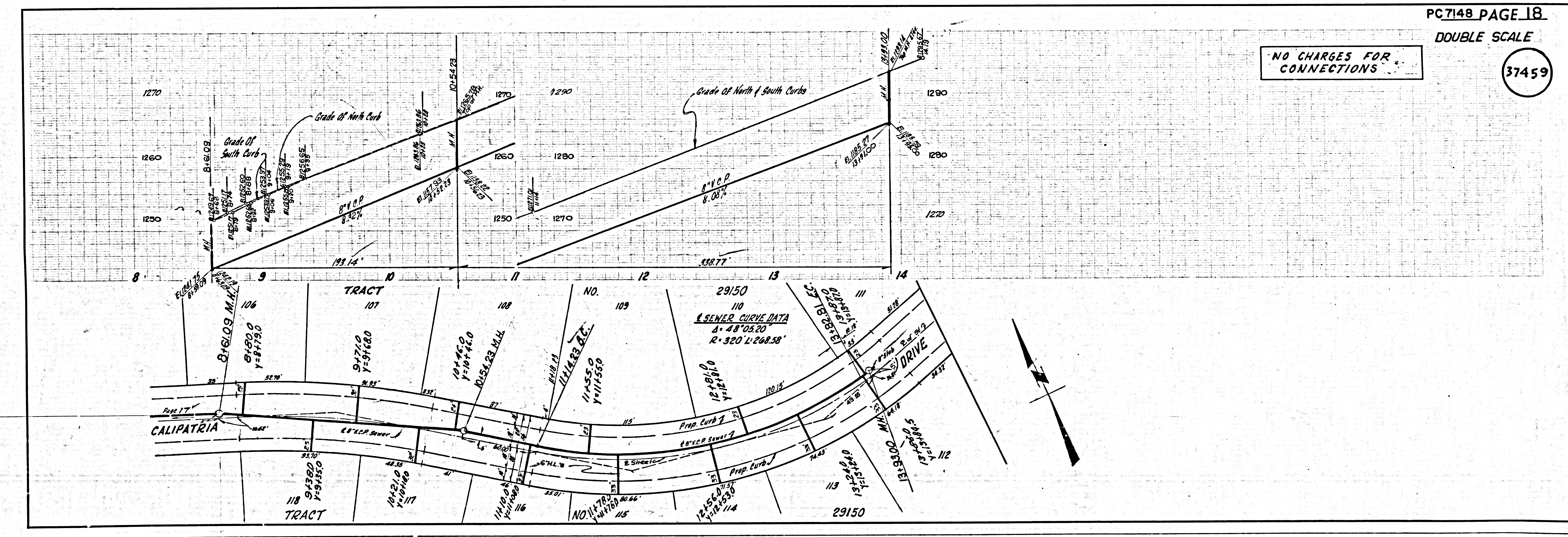
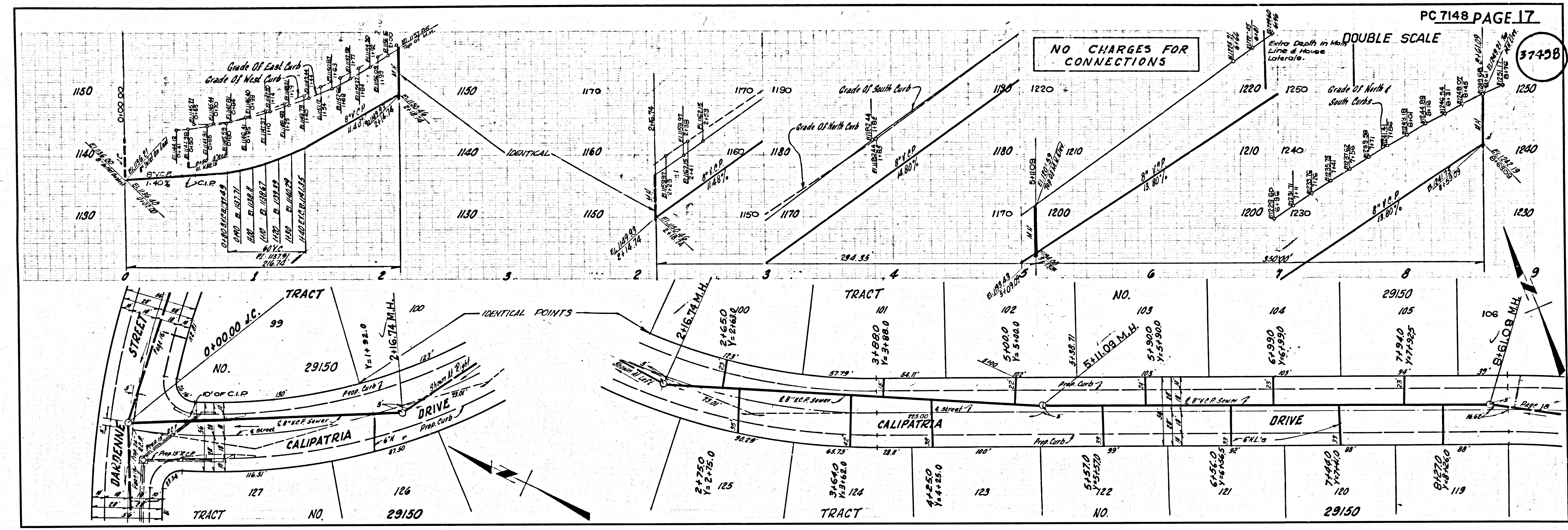




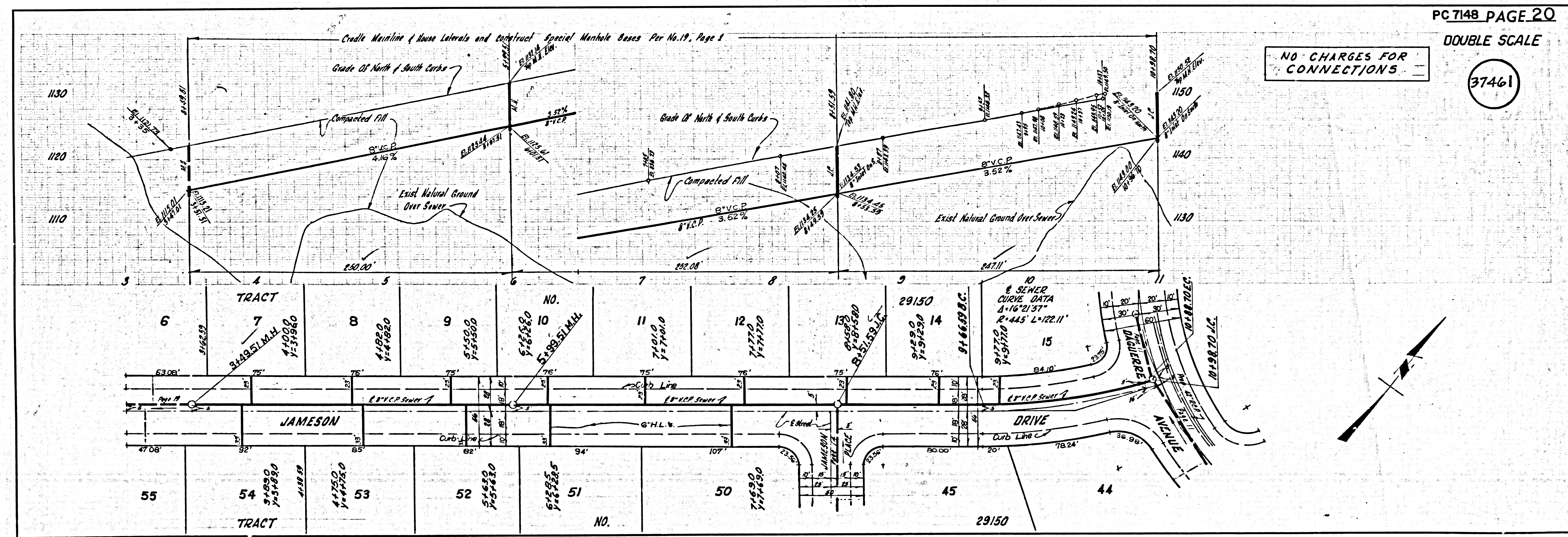
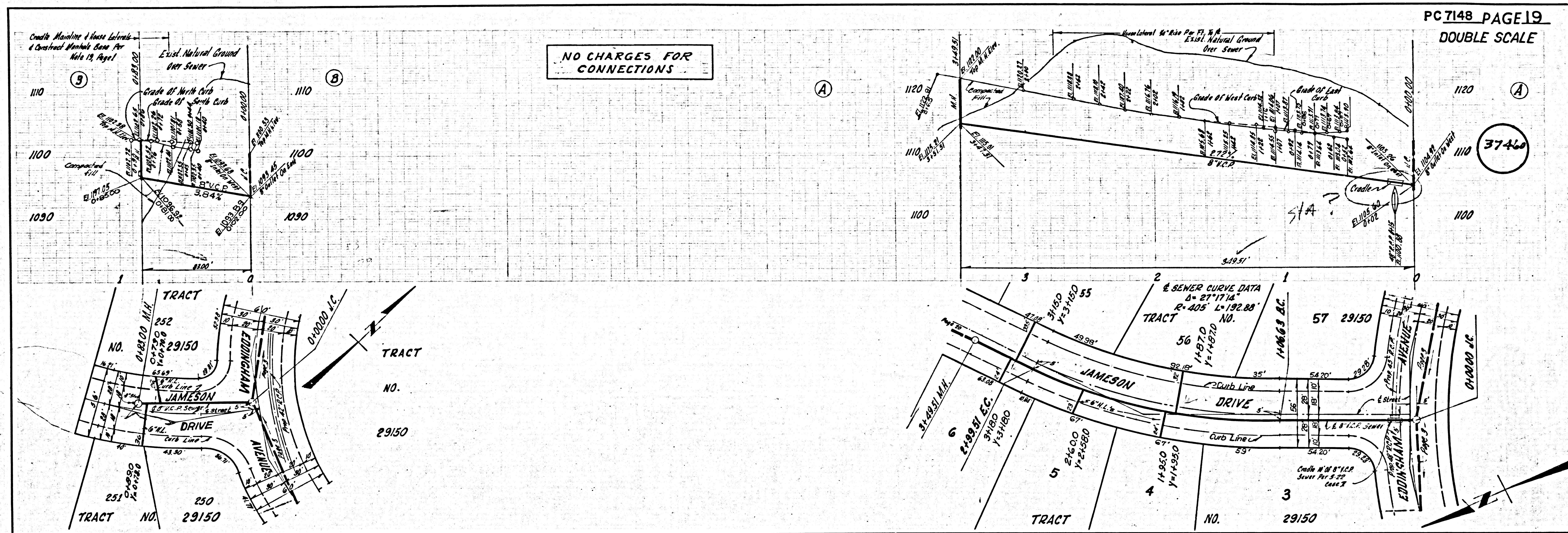




SCALE 1/8" = 1' S.A. COUNTY SEWER SHEET NO. 2 B.O. CAL. BLUEPRINT CO.



PC 7148 TRACT NO. 58120



50' 10" 15' 0" 20' 0" 25' 0" 30' 0" 35' 0" 40' 0" 45' 0" 50' 0" 55' 0" 60' 0" 65' 0" 70' 0" 75' 0" 80' 0" 85' 0" 90' 0" 95' 0" 100' 0"