

B.M. SY 6003 ELEV. 916.680
 R.D.M. Tag. N. Ch. 12 E. B.C.R. of N.E.
 Cor. Palos Verdes Drive East & Castilina
 Drive 40' S. N., 55' E. Int. Section.
 PALOS VERDES QUAD. 19 60

REVISION 6-26-66
 RAISED GRADE ON COOLHEIGHTS
 DRIVE, PAGE 17, TRACT BNDY.
 TO 500' EASTWARD.
 BY: *David M. Woods*
 R.E. 12573
 APPROVED: *David M. Woods*
 R.E. 10653

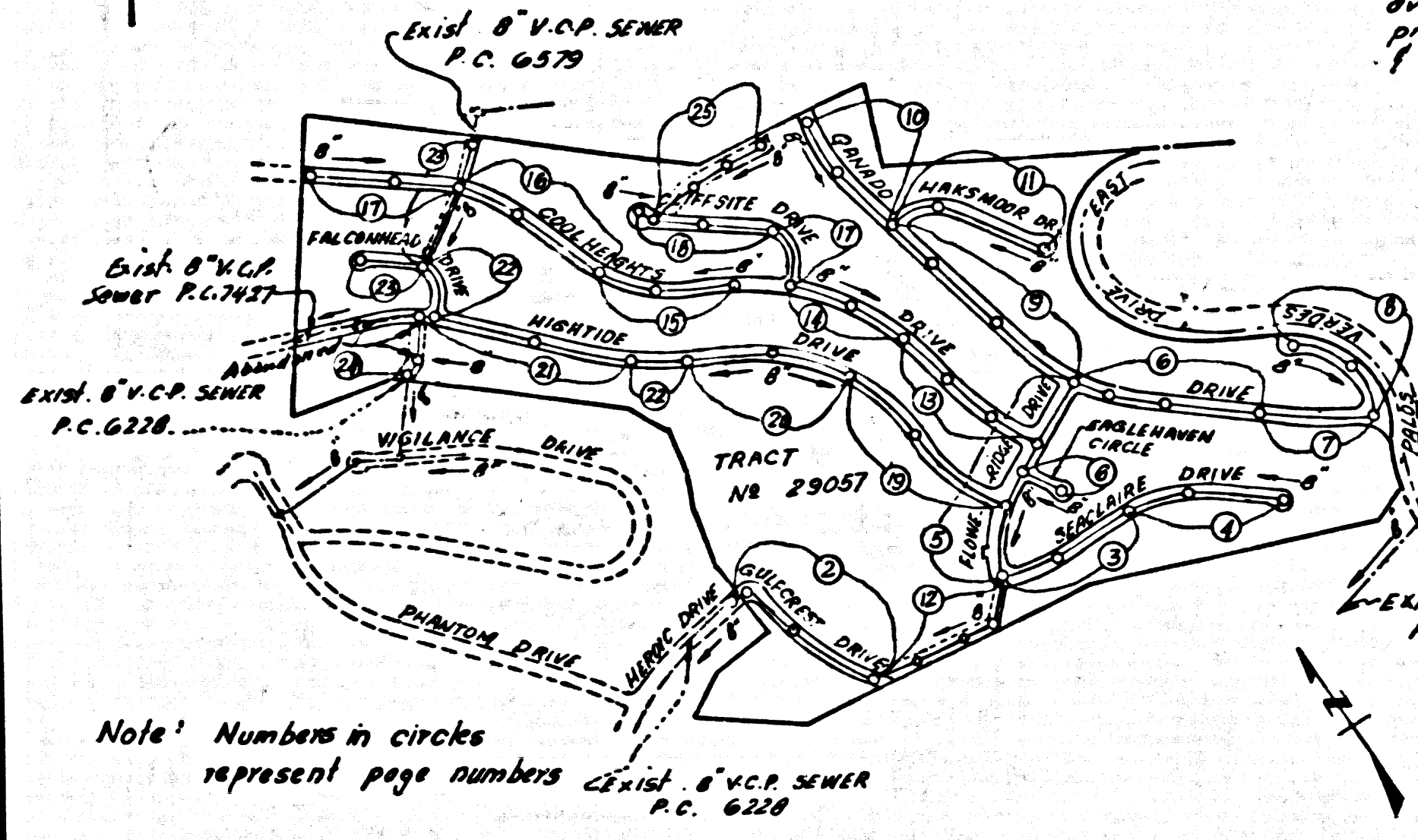
REVISION 8-20-65
 LOWERED GRADES ON COOLHEIGHTS
 DRIVE, PAGE 17, TRACT BNDY.
 TO 500' EASTWARD.
 BY: *Ed J. Brand*
 R.E. 5231
 APPROVED: *Ed J. Brand*
 R.E. 5231

DOUBLE SCALE
 LOMITA BLDG. DIST. NO. 12

PROFILE ALIGNMENT AND GRADE OF
 SANITARY SEWERS PAGE 1
 TO BE CONSTRUCTED IN

TRACT No 29057 37808
 PRIVATE CONTRACT NO. 7153

W.S. 27
 13 SHEETS, 26 PAGES
 SCALE: VERT. 1" = 8'
 HORIZ. 1" = 40'
 NOVEMBER, 1964
 PREPARED IN THE OFFICES OF
 DEVELOPMENT CONSULTANTS INC.
 ENGINEERING DIVISION
 10015 CRENSHAW BLVD., PASADENA, CALIFORNIA
 BY: *Ed J. Brand*
 REG. C.E. NO. 3552
 FOR LEGEND SEE PLAN NO. 5-1



INDEX MAP
 TRACT No 29057
 P.C. 7153
 SCALE: 1" = 600'

REVISION 7-31-66
 RAISED GRADE ON COOLHEIGHTS DRIVE
 PAGE 17, TRACT BNDY. TO 500' EASTWARD.
 APPROVED: *David M. Woods*
 R.E. 10653

REVISION 12-21-65
 Added 6" Chimney
 5' x 1457.00 page 12A
 Approved: *David M. Woods*
 R.E. 10653

REVISION 10-6-65
 Lowered surface over sewer and inverts,
 on page 12B, from 516.10 to 516.15 and 516.15 to 516.20
 Added M.H. 6' x 6' x 6'
 BY: *Ed J. Brand*
 R.E. 5231
 Approved: *Ed J. Brand*
 R.E. 5231

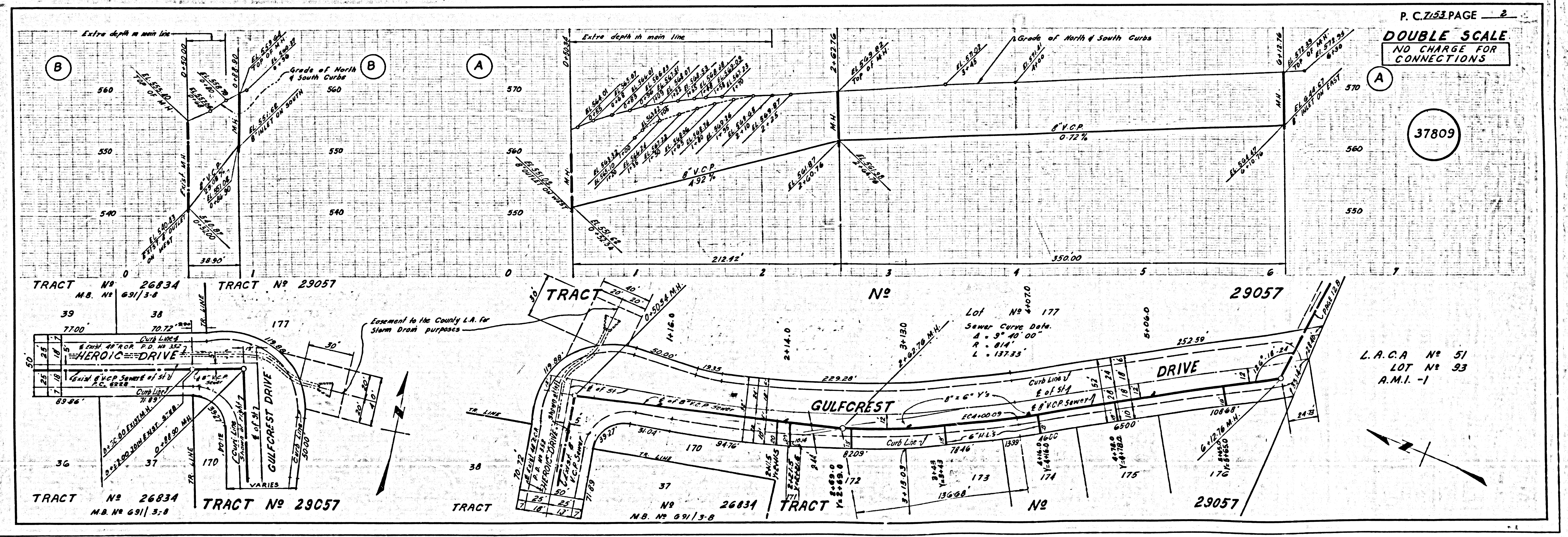
COLLECT CHARGES
 AS INDICATED
John N. Michael 1/12/64

NO CONNECTIONS FOR THE DISPOSAL OF
 INDUSTRIAL WASTES SHALL BE MADE TO
 SEWERS SHOWN ON THESE DRAWINGS
 WITHOUT WRITTEN PERMISSION AS TO
 THE COUNTY SANITATION DISTRICTS.

NOTE:
 GRADES TO WHICH THIS IMPROVEMENT IS TO BE CONSTRUCTED ARE SHOWN ON PLANS AND PROFILE. GRADE POINTS FOR TOP OF CURBS, CENTER LINE OF STREETS OR CENTER LINE OF ALLEYS ARE SHOWN BY CIRCLES ON PROFILES AT ALL POINTS BETWEEN DESIGNATED POINTS. THE GRADE SHALL BE ESTABLISHED SO AS TO CONFORM TO A STRAIGHT LINE DRAWN BETWEEN SAID DESIGNATED POINTS. ELEVATIONS ARE IN FEET ABOVE U.S.C. & G.S. MEAN SEA LEVEL, DATE 1929.
 THIS DRAWING AND THE DATA HEREON ARE HEREBY MADE A PART OF THE SPECIFICATIONS.
 BEFORE WORK CAN BE STARTED, THE CONTRACTOR MUST OBTAIN A PERMIT TO EXCAVATE IN COUNTY STREETS FROM THE L.A. COUNTY ROAD DEPT., DISTRICT OFFICE NO. 3, AND PAY A FEE TO THE COUNTY ENGINEER, ROOM 320, COUNTY ENGINEERING BUILDING, THE WEST SECOND STREET OFFICE BUILDING, LOS ANGELES, CALIFORNIA, SUFFICIENT TO COVER THE COST OF CONSTRUCTION INSPECTION AND RECORD PLANS.
 APPROVAL OF THIS PLAN BY THE COUNTY OF LOS ANGELES DOES NOT CONSTITUTE A REPRESENTATION AS TO THE ACCURACY OF THE LOCATION OR THE EXISTENCE OR NON-EXISTENCE OF ANY UNDERGROUND UTILITY PIPE, OR STRUCTURE WITHIN THE LIMITS OF THIS PROJECT. THIS NOTE APPLIES TO ALL PAGES.
 IF WORK IS TO BE DONE IN A STATE HIGHWAY, A PERMIT MUST BE OBTAINED FROM THE STATE OF CALIFORNIA, DIVISION OF HIGHWAYS, THE SOUTH BRING STREET, LOS ANGELES, CALIFORNIA.

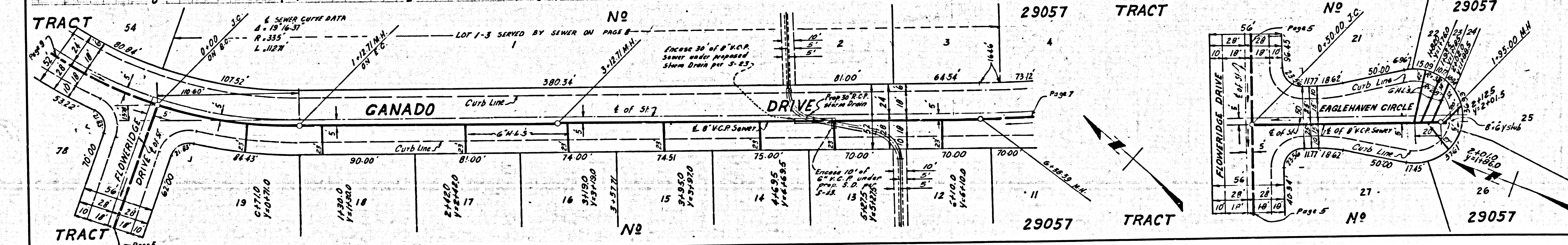
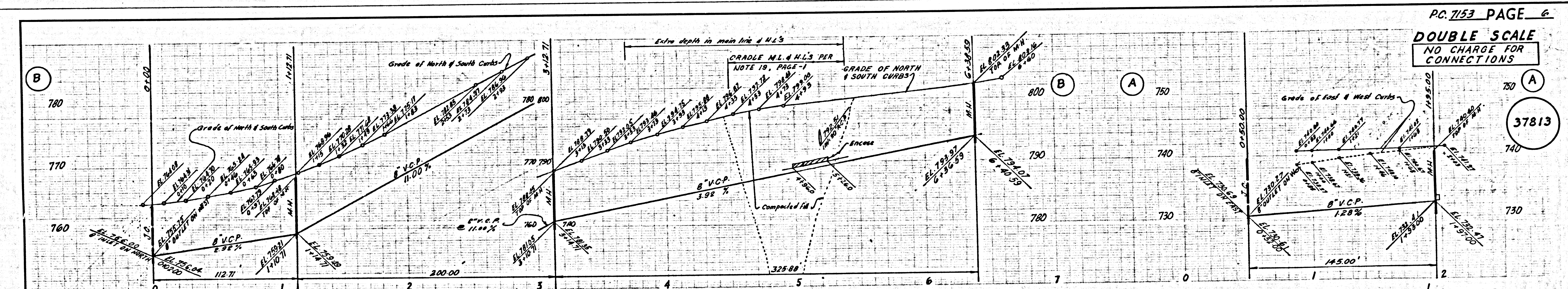
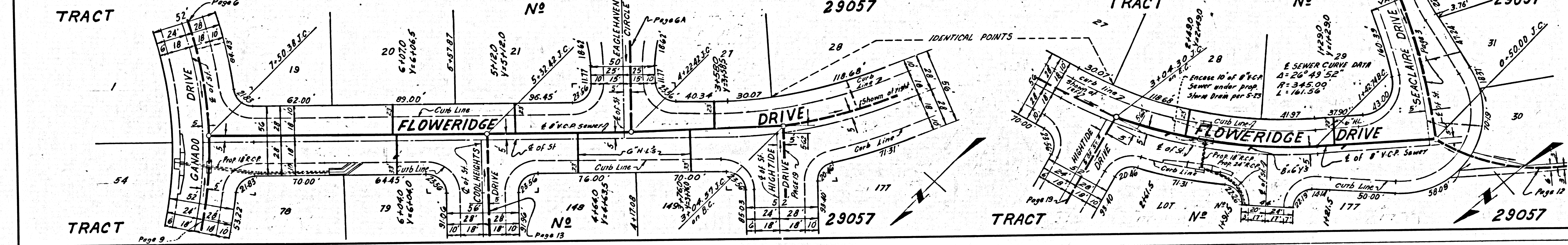
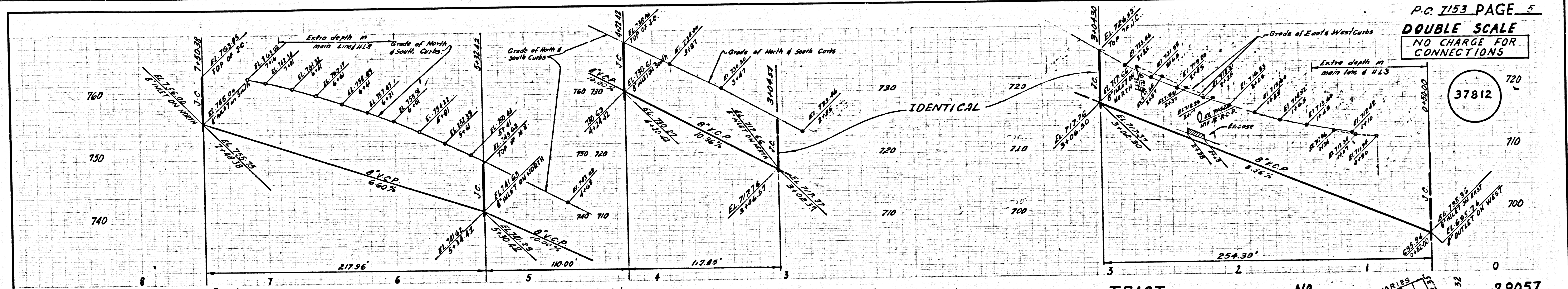
COUNTY OF LOS ANGELES, CALIFORNIA
 JOHN A. LAMBE, COUNTY ENGINEER J. D. PARKHURST, CHIEF ENGINEER
 CO. SAN. DIST. NO. 12
 APPROVED BY: *John A. Lambe* ASSISTANT SANITATION ENGINEER APPROVED BY: *J. D. Parkhurst* CHIEF ENGINEER
 SUBMITTED BY: *Ed J. Brand* REGIONAL ENGINEER
 CHECKED BY: *David M. Woods* REG. C.E. NO. 10653

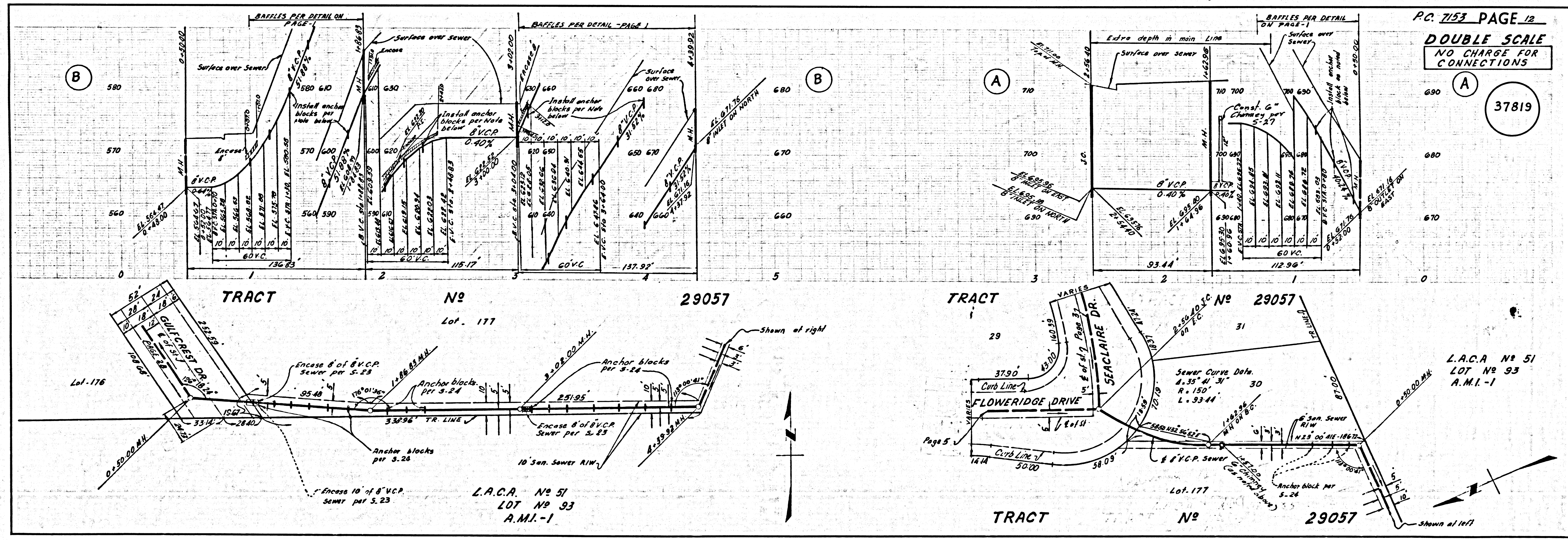
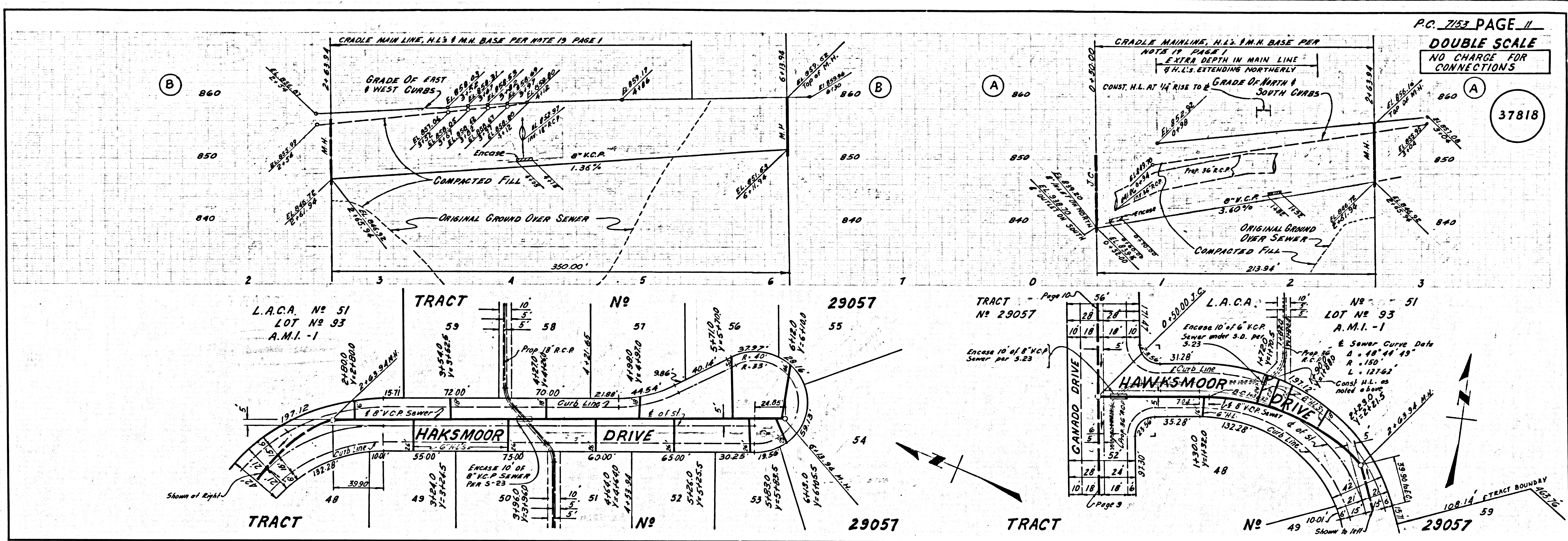
J. N. 036430

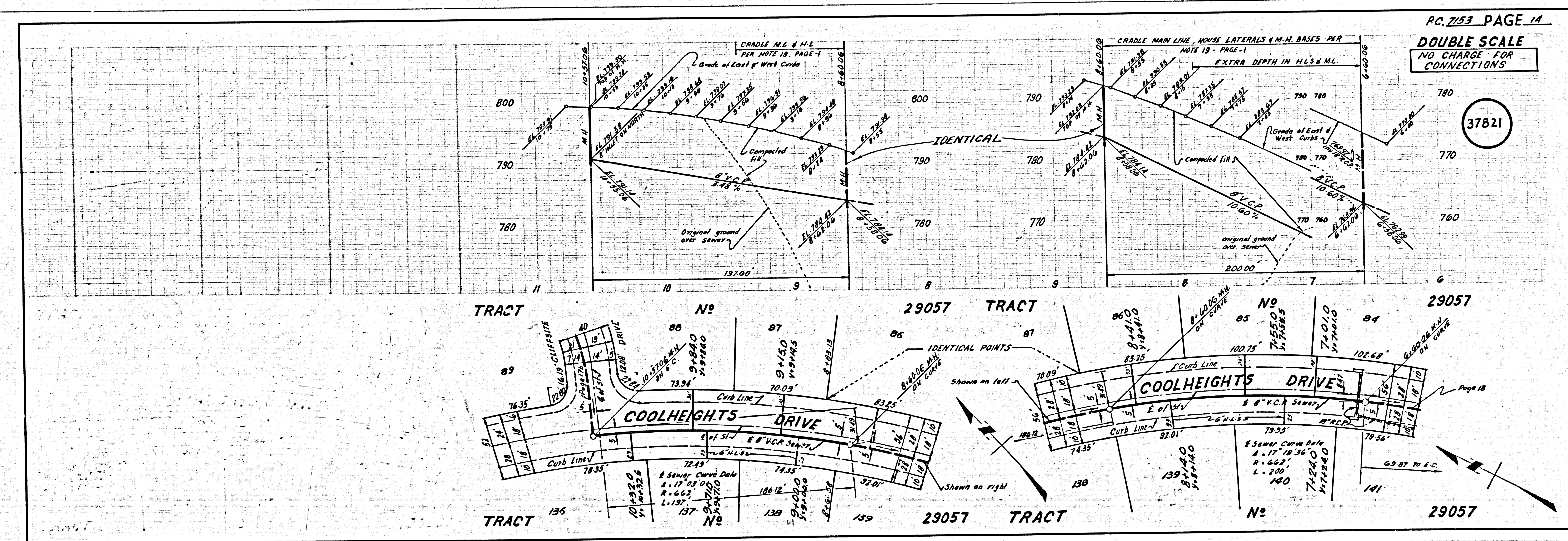
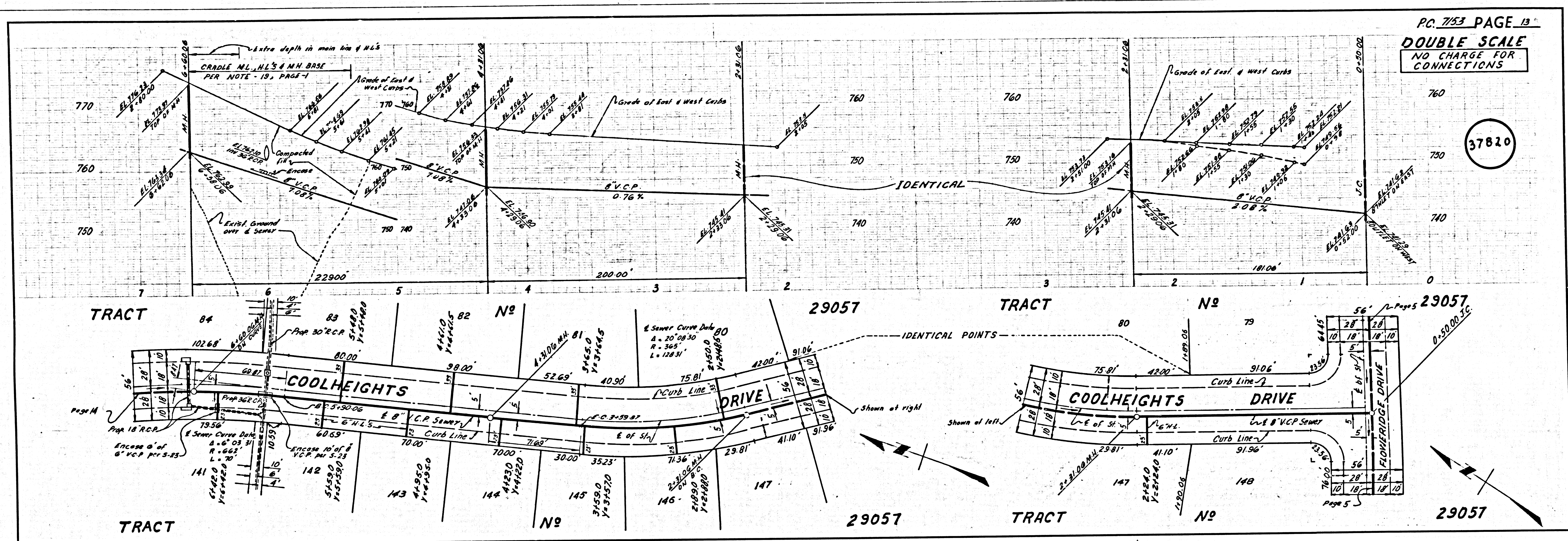


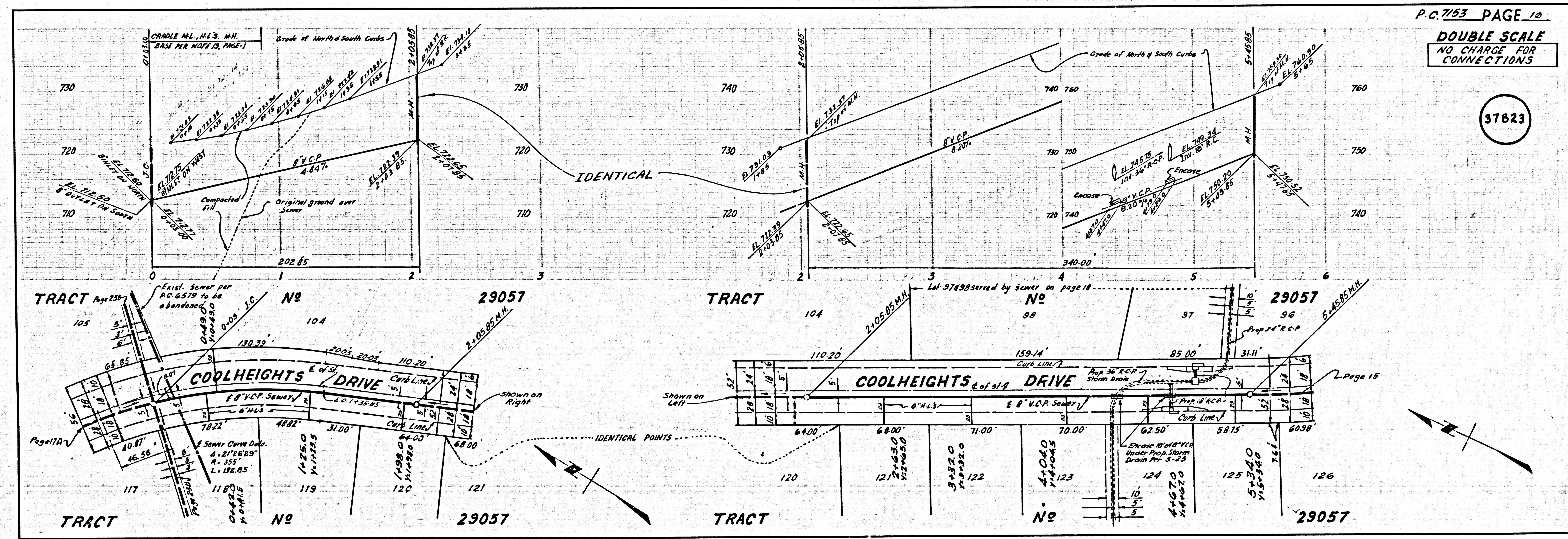
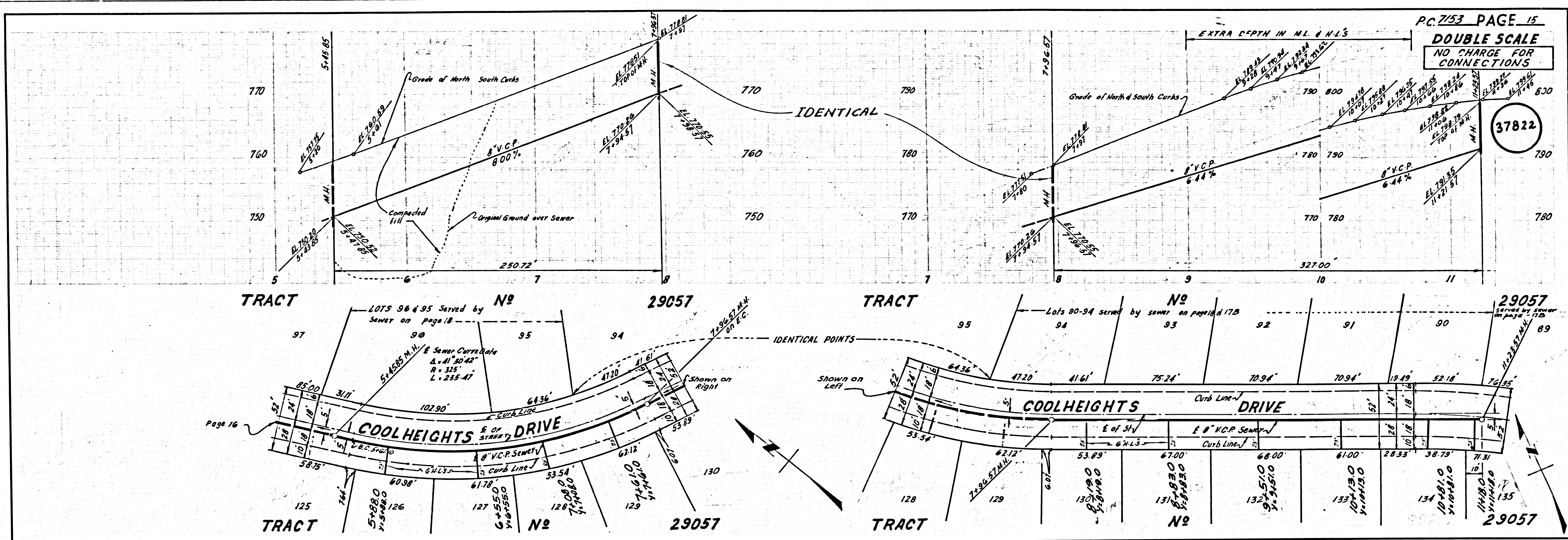
P. C. 7153 PAGE 2
 DOUBLE SCALE
 AND CHARGE FOR
 CONNECTIONS
 37808

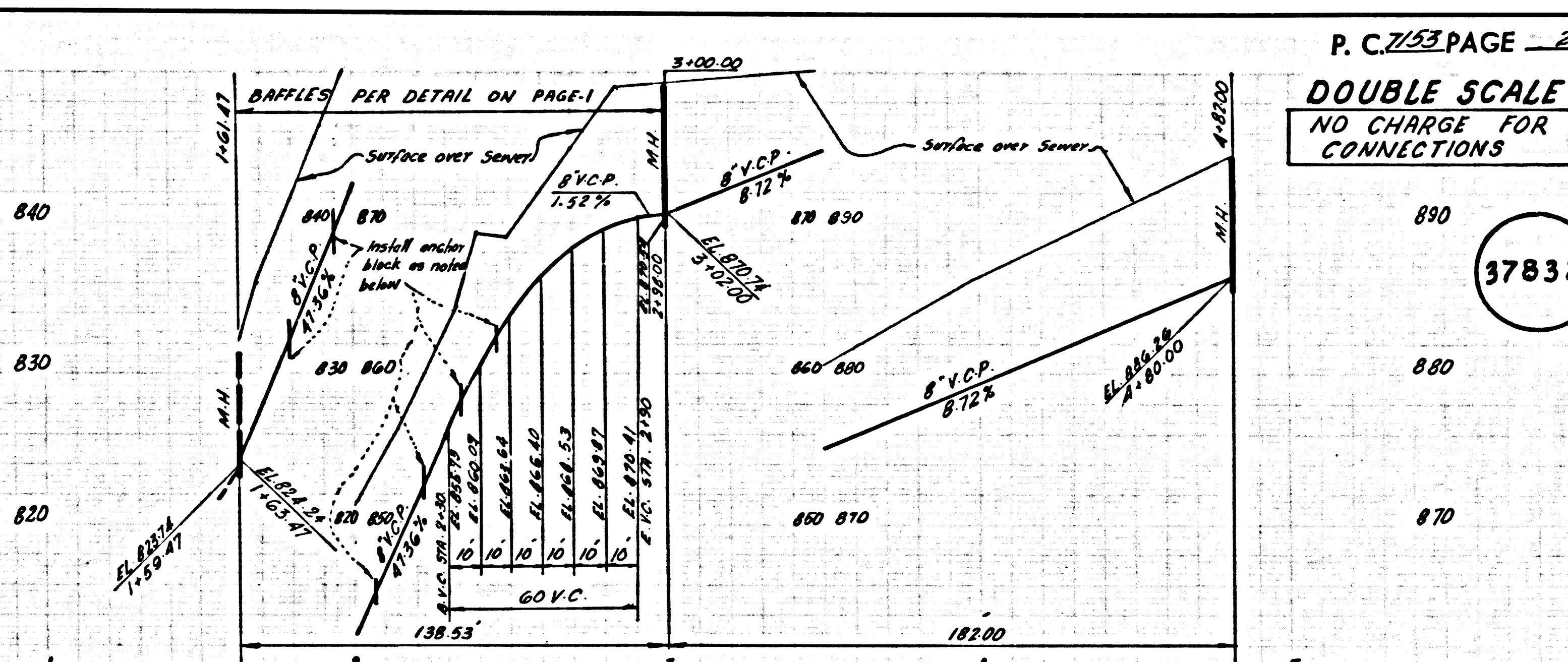
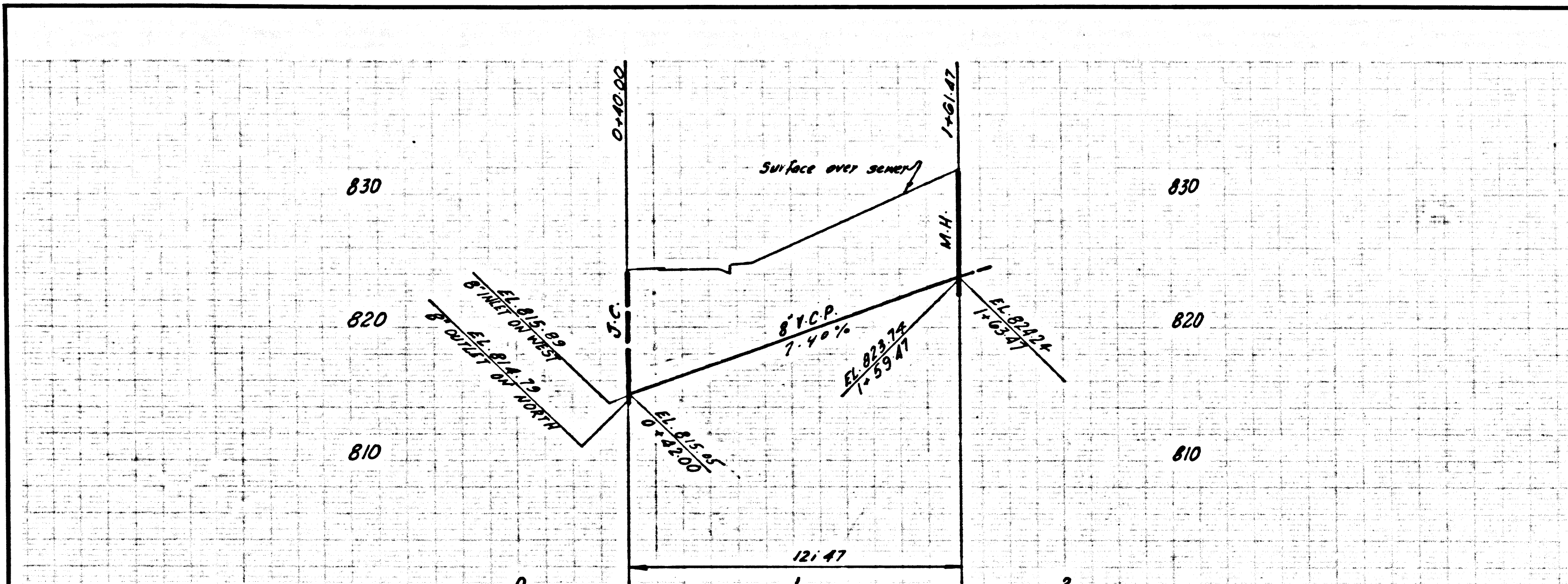
L.A.C.A. No 51
 LOT No 93
 A.M.I. - 1











P. C. 7153 PAGE 25
DOUBLE SCALE
 NO CHARGE FOR CONNECTIONS

37832

