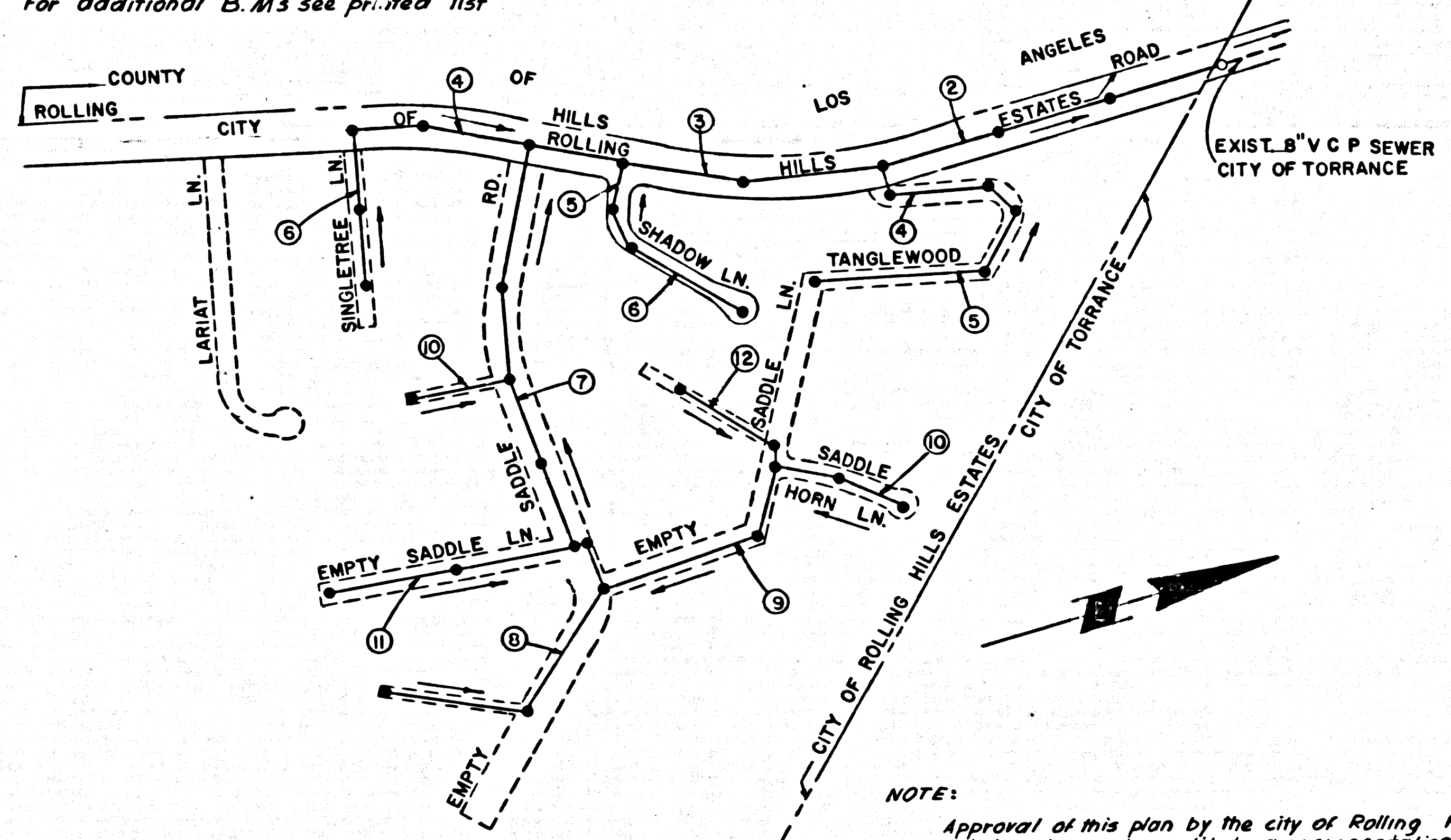


B.M. 49-6 ELEV. 473.973 (1960)  
 N.W. corner Palos Verdes Dr. N.  
 33.4 FT. N.E. of E. PALOS VERDES  
 Dr. N. and 205 FT. N.W. of E. PALOS  
 VERDES Dr. STD. C.S. Brass Man.  
 Stamped B.M. 49-6-1955 R.E. 3869

For additional B.M.'s see printed list

### ROLLING HILLS ESTATES BUILDING DISTRICT No. 12.03



P.C. 7160  
 INDEX MAP  
 SCALE: 1" = 300'

NOTE:  
 Approval of this plan by the City of Rolling Hills Estates, does not constitute a representation as to accuracy of the location or the existence or non-existence of any underground utility pipe or structure within the limits of this project.  
 Where stations are shown at the end of house laterals, the location of such house laterals shall not be moved up grade from the station indicated.

USE EXTRA STRENGTH PIPE. ALL PIPE IS STANDARD DEPTH EXCEPT AS NOTED.  
 USE MECHANICAL COMPRESSION JOINTS FOR ALL VITRIFIED CLAY PIPE EXCEPT PER SPEC. SECT. 34, 44, & 49.  
 ALL STRUCTURES SHALL BE BRICK SEWER STRUCTURES AS PER PLAN NO. S-1, 2, 3, 4, 5, 6, 7, 8, 9, 10, 11, 12, 13, 14, 15, 16, 17, 18, 19, 20, 21, 22, 23, 24, 25, 26, 27, 28, 29, 30, 31, 32, 33, 34, 35, 36, 37, 38, 39, 40, 41, 42, 43, 44, 45, 46, 47, 48, 49, 50, 51, 52, 53, 54, 55, 56, 57, 58, 59, 60, 61, 62, 63, 64, 65, 66, 67, 68, 69, 70, 71, 72, 73, 74, 75, 76, 77, 78, 79, 80, 81, 82, 83, 84, 85, 86, 87, 88, 89, 90, 91, 92, 93, 94, 95, 96, 97, 98, 99, 100.  
 USE STANDARD MANHOLE FRAMES AND COVERS AS PER PLAN NO. S-16, EXCEPT AS NOTED.  
 USE FORMULA NO. 3, SEC. 34 OF SPECIFICATIONS TO COUNTY ALLOWABLE SEWAGE.  
 CONSTRUCT HOUSE LATERALS WITH INVERTS AT PROPERTY LINE & FEET BELOW CURB GRADE, OR SURFACE OVER SEWER EXCEPT AS NOTED.  
 FIGURES IN CIRCLES AT ENDS OF HOUSE LATERALS INDICATE DEPTH BELOW CURB GRADE, OR SURFACE OVER SEWER TO PROPERTY LINE.  
 WORDS IN CIRCLES AT ENDS OF HOUSE LATERALS INDICATE HOUSE LATERALS SHALL BE CONSTRUCTED WITH 1/2" RISE PER FOOT TO PROPERTY LINE.  
 ALL HOUSE LATERALS SHALL BE CONSTRUCTED IN A STRAIGHT ALIGNMENT AT RIGHT ANGLES FROM THE MAIN LINE SEWER EXCEPT AS SHOWN ON THE PLANS. HOUSE LATERALS FROM CHIMNEYS SHALL NOT HAVE AN ANGLE OF LESS THAN 45 DEGREES WITH THE MAIN LINE SEWER.  
 THE CONTRACTOR SHALL NOTIFY THE ENGINEER OF PUBLIC BY TELEPHONE 385-7021 AT LEAST 24 HOURS BEFORE STARTING ANY WORK UNDER THIS CONTRACT.  
 CONSTRUCTION IN STATE HIGHWAYS SHALL CONFORM WITH STATE HIGHWAY PERMIT AND THE CONTRACTOR SHALL PAY ALL COSTS IN CONNECTION THEREWITH.  
 ALL STATE AND LOCAL TRENCH SAFETY ORDERS WILL BE RIGIDLY ENFORCED.  
 RESURFACING SCHEDULE: RESURFACE TRENCH WITHIN PAVED AREA PER SECTION 69 OF STANDARD SPECIFICATIONS  
 ALL HOUSE LATERALS MARKED AT PROPERTY LINE WITH ROCK ANCHOR AND NO. 8 GAUGE WIRE WITH BLUE PLASTIC FLAG ATTACHED AS SHOWN ON DETAIL NO. 1, PAGE 12.

ALL CONCRETE CROSS CUTTERS, CURBS, GUTTERS, PAYMENTS, AND DRIVEWAYS SHALL BE TUNNELED OR JACKED PER LOS ANGELES COUNTY ROAD DEPARTMENT REQUIREMENTS.  
 THE FOLLOWING LATEST REVISED STANDARD PLANS ON FILE IN THE OFFICE OF CITY ENGINEER SHALL APPLY IN THE CONSTRUCTION OF THIS PROJECT.

STANDARD LEGEND	S-1
STANDARD BRICK SEWER STRUCTURE	S-3
STANDARD MANHOLE FRAME AND COVER	S-15
STANDARD MANHOLE STEPS	S-17
STANDARD STOPPER	S-30
STANDARD WYE SUPPORT	S-28
STANDARD SUPPORT AND PROTECTION OF SEWER PIPES	S-25
STANDARD BEDDING FOR SEWER PIPES	S-21
MINIMUM EXCAVATION SAFETY REQUIREMENTS	S-2
STANDARD REINFORCED CONCRETE MANHOLE	S-5
STANDARD NON-REINFORCE CONCRETE MANHOLE	S-5

THE UNDERGROUND UTILITY COMPANIES WITHIN THE LIMITS OF THIS PROJECT ARE AS FOLLOWS:  
 Southern California Gas Co.  
 Palos Verdes Water Co.  
 (1) \_\_\_\_\_  
 (2) \_\_\_\_\_  
 (3) \_\_\_\_\_

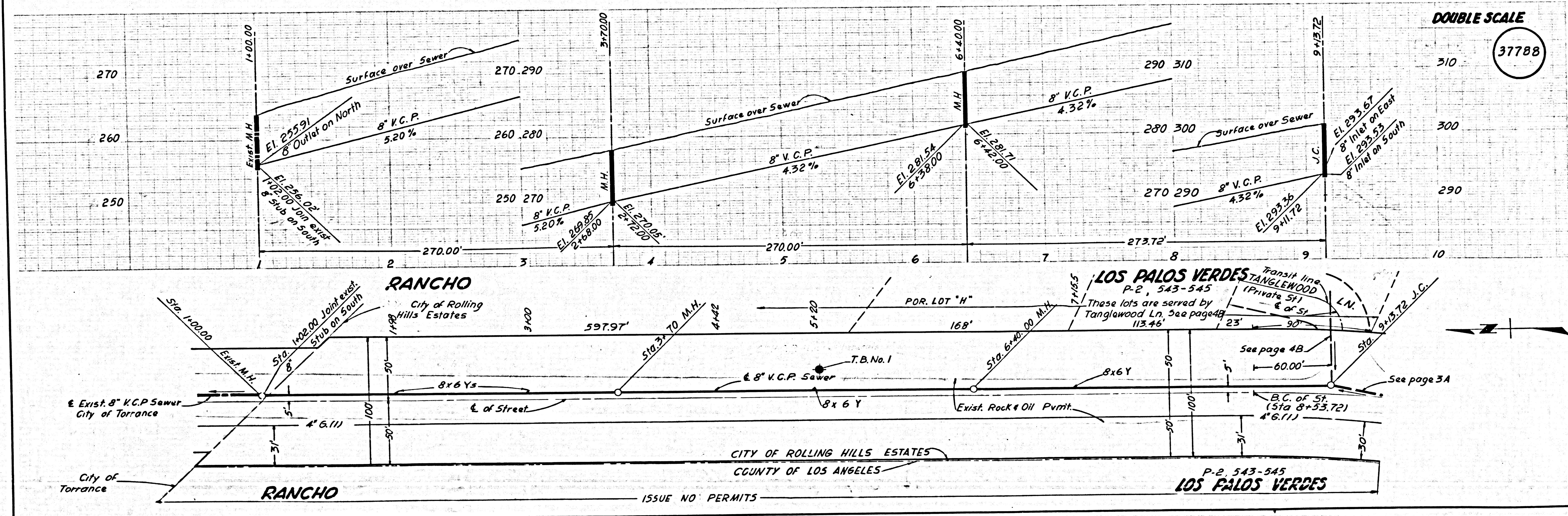
APPROVED *[Signature]*  
 PALOS VERDES-CENTINELA VALLEY  
 REGIONAL ENGINEER  
 CHECKED *[Signature]*  
 R.E. 10453  
 JAN. 26, 1965  
 RECORDED PLANS 22/COM DEC. '65

P.C. 7160  
 ROLLING HILLS ESTATES SEWER IMPROVEMENT  
 SANITARY DISTRICT No. 1  
 PRIVATE CONTRACT No. 7160  
 PROFILE, ALIGNMENT AND GRADE OF  
 ANILY SEWERS  
 TO BE CONSTRUCTED IN  
 EMPTY SADDLE ROAD  
 AND OTHER RIGHTS OF WAY  
 W. S. 27  
 6 SHEETS; 12 PAGES

SCALE: VERT. 1" = 8'  
 HORIZ. 1" = 40'  
 DECEMBER, 1964  
 CITY OF ROLLING HILLS ESTATES, CALIFORNIA  
 K.G. TRANBARGER ENGINEER OF WORK  
 JOHN A. LAMBIE CITY ENGINEER  
 APPROVED BY *[Signature]* ASST. SANITATION ENGINEER  
 J. D. PARKHURST CHIEF ENGINEER OF COUNTY SANITATION DISTRICT NO. 5  
 APPROVED BY *[Signature]* OFFICE ENGINEER

NOTES:  
 WORK SHALL BE CONSTRUCTED ACCORDING TO STANDARD SPECIFICATIONS AND THE SPECIAL SPECIFICATIONS FOR THE SEWER DISTRICT OF ROLLING HILLS ESTATES AND WORK SHALL BE PROSECUTED ONLY IN THE PRESENCE OF THE ENGINEER OF WORK.  
 GRADES TO WHICH THIS IMPROVEMENT IS TO BE CONSTRUCTED ARE SHOWN ON PLANS AND PROFILES. GRADE POINTS ARE SHOWN ON PLANS. CENTER LINE OF STREET OR CENTER LINE OF ALLEY ARE SHOWN BY CIRCLES ON PROFILES. ALL POINTS BETWEEN DESIGNATED POINTS THE GRADE SHALL BE ESTABLISHED SO AS TO CONFORM TO A STRAIGHT LINE BETWEEN SAID DESIGNATED POINTS.  
 ELEVATIONS ARE IN FEET ABOVE U.S.C. & G.S. SEA LEVEL DATUM OF 1929.  
 UNIT PRICES FOR ADDITIONAL WORK WHICH MAY BE REQUIRED BUT WHICH CANNOT BE ASCERTAINED IN ADVANCE, SHALL BE SUBMITTED IN THE PROPOSAL.  
 THIS DRAWING AND THE DATA HEREON ARE HEREBY MADE A PART OF THE SPECIFICATIONS.  
 NO CONNECTIONS FOR THE DISPOSAL OF INDUSTRIAL WASTES SHALL BE MADE TO SEWERS SHOWN ON THESE DRAWINGS WITHOUT WRITTEN PERMISSION FROM THE CHIEF ENGINEER AND GENERAL MANAGER OF THE COUNTY SANITATION DISTRICTS.

P.C. 7160 PAGE 2

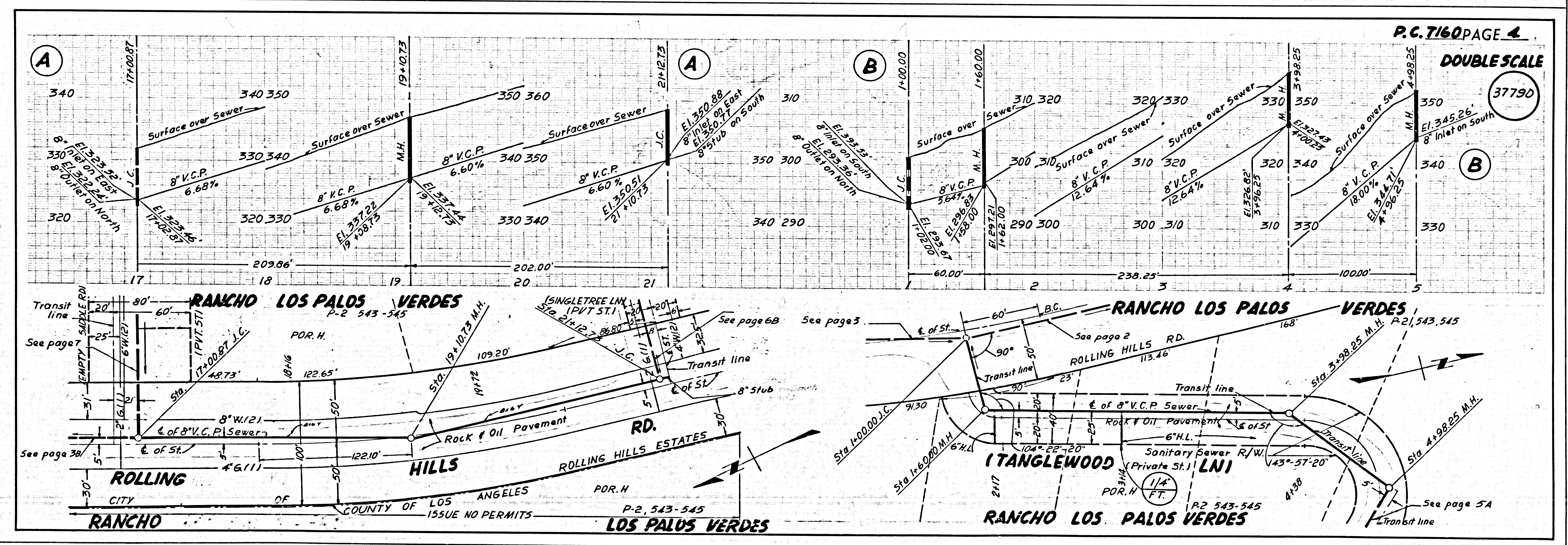
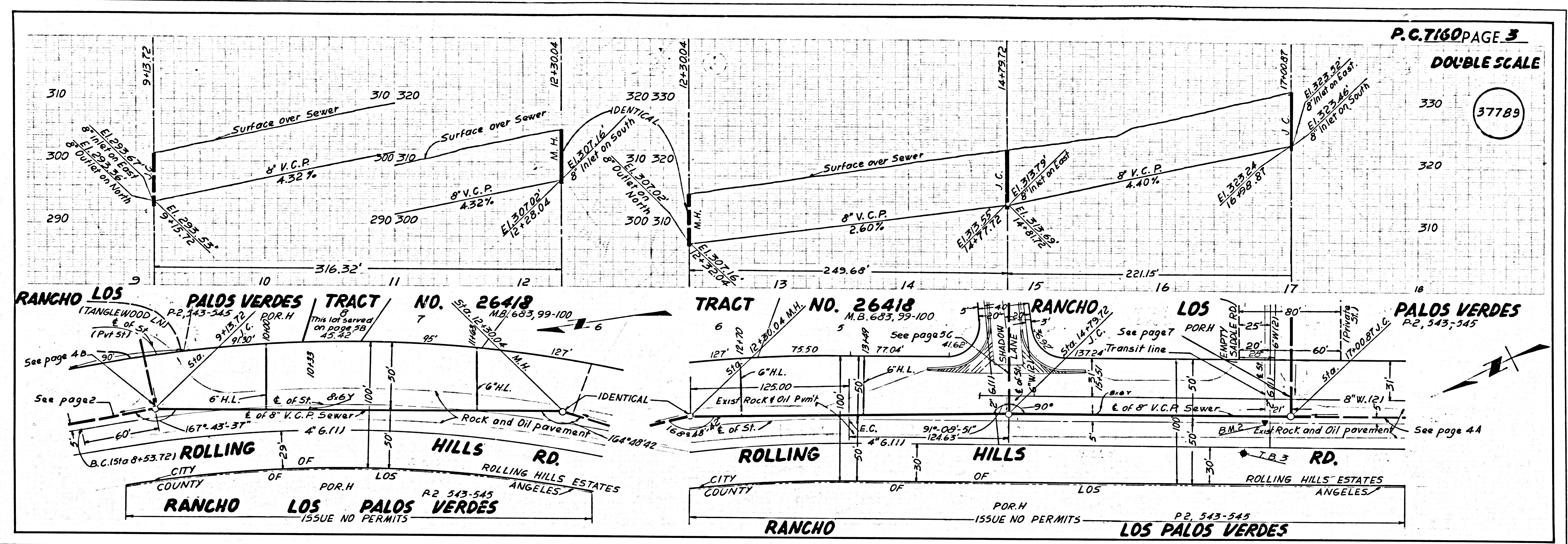


LOS PALOS VERDES TANGLEWOOD  
 P-2, 543-545  
 These lots are served by Tanglewood Ln. See page 4B  
 113.46'  
 23'  
 90'  
 50'  
 60.00'  
 B.C. of St. (Sta 8+53.72) 4' 6.11"  
 See page 4B  
 See page 3A

CITY OF ROLLING HILLS ESTATES  
 COUNTY OF LOS ANGELES  
 ISSUE NO PERMITS

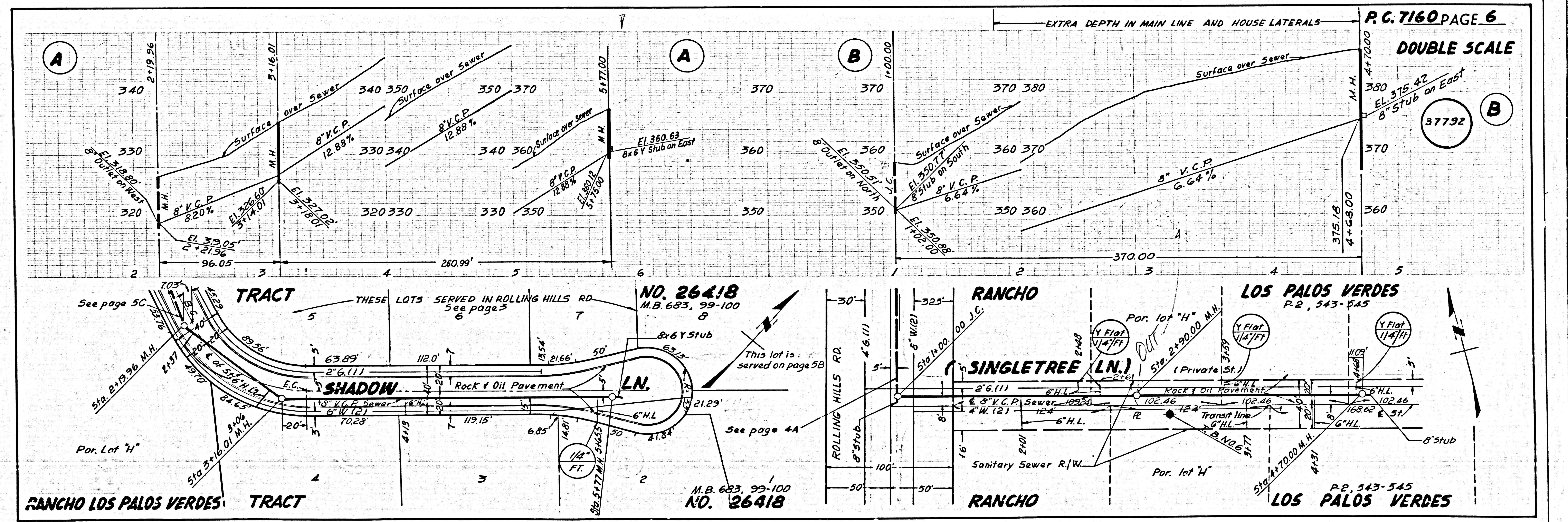
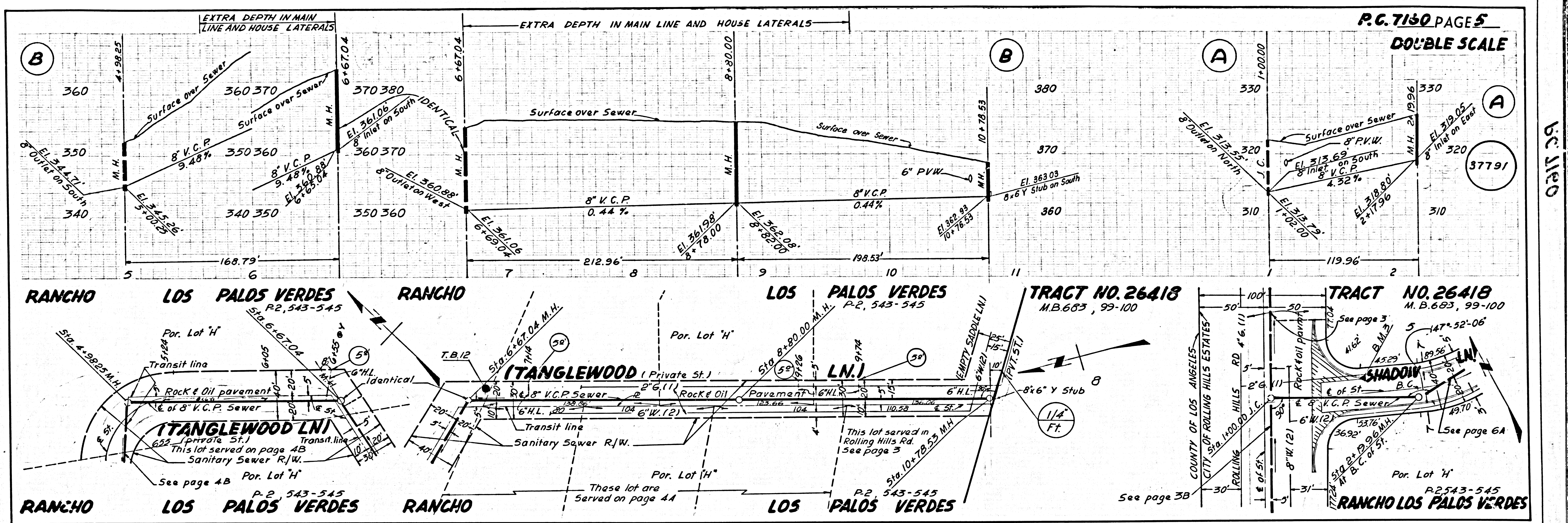
P-2 543-545  
 LOS PALOS VERDES





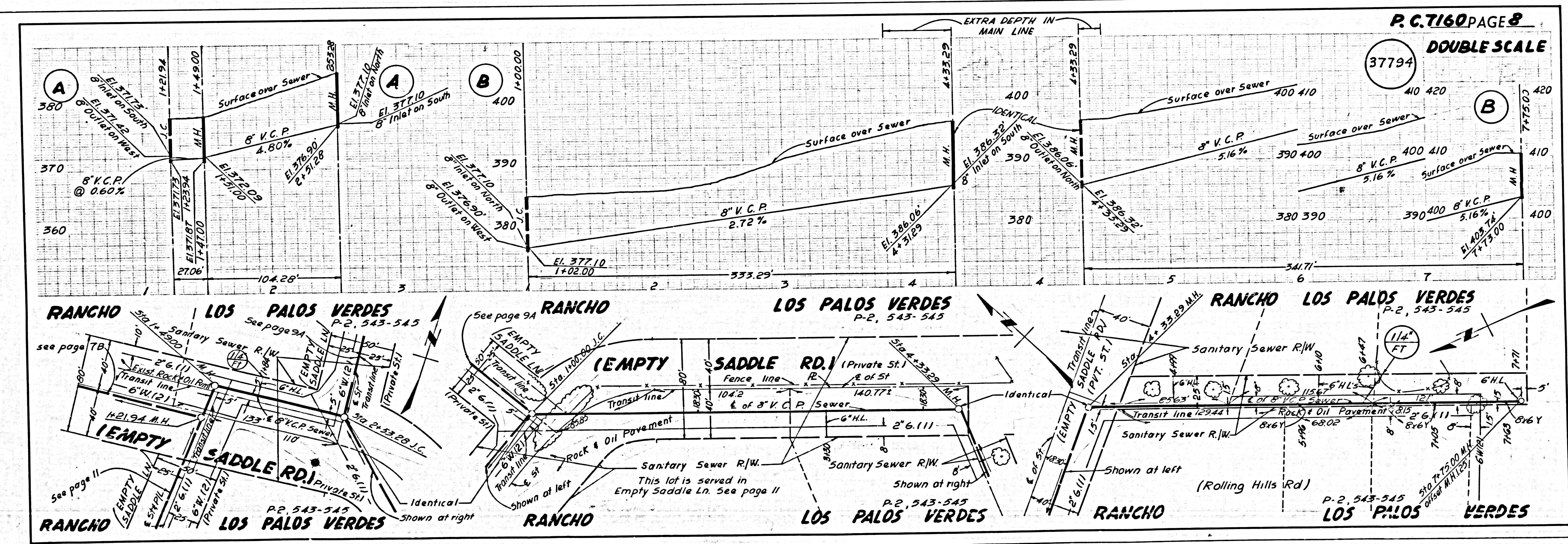
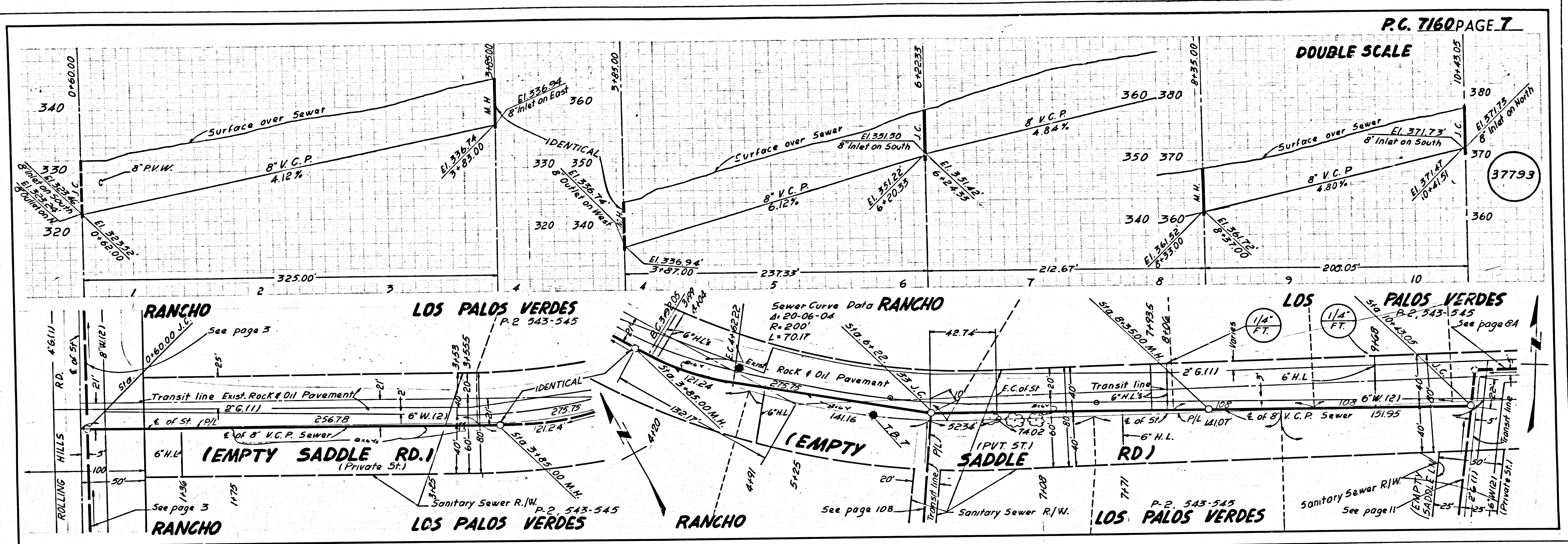
R.C. 1160



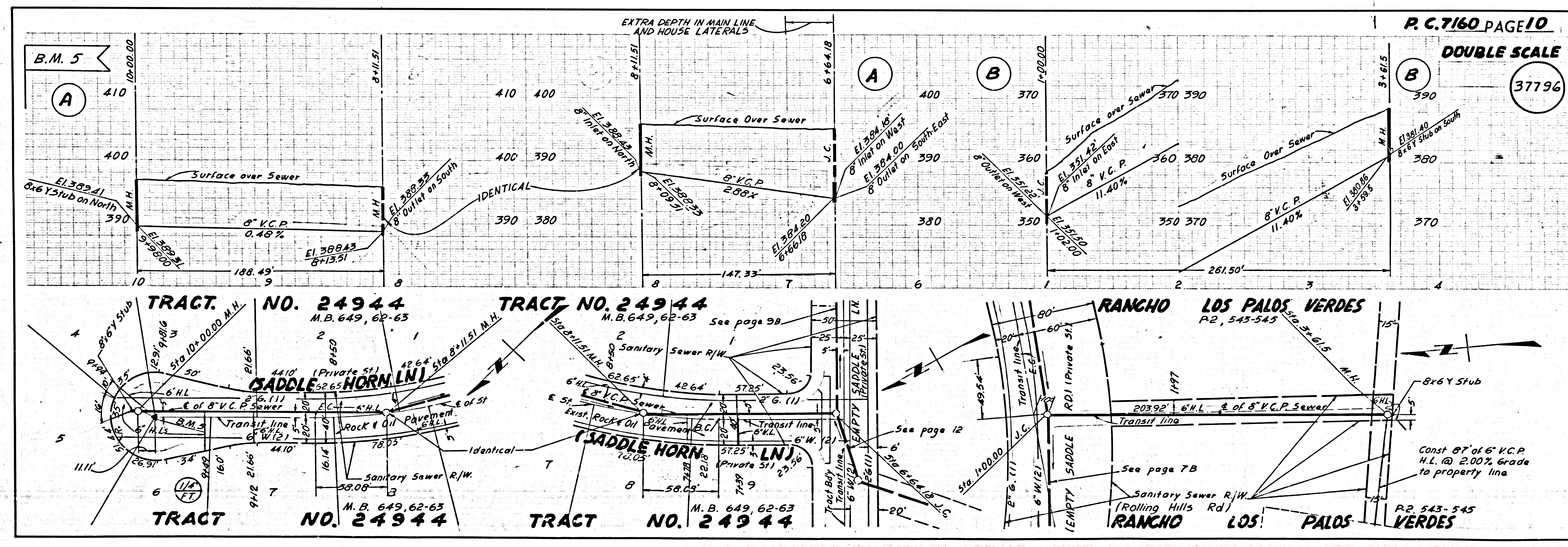
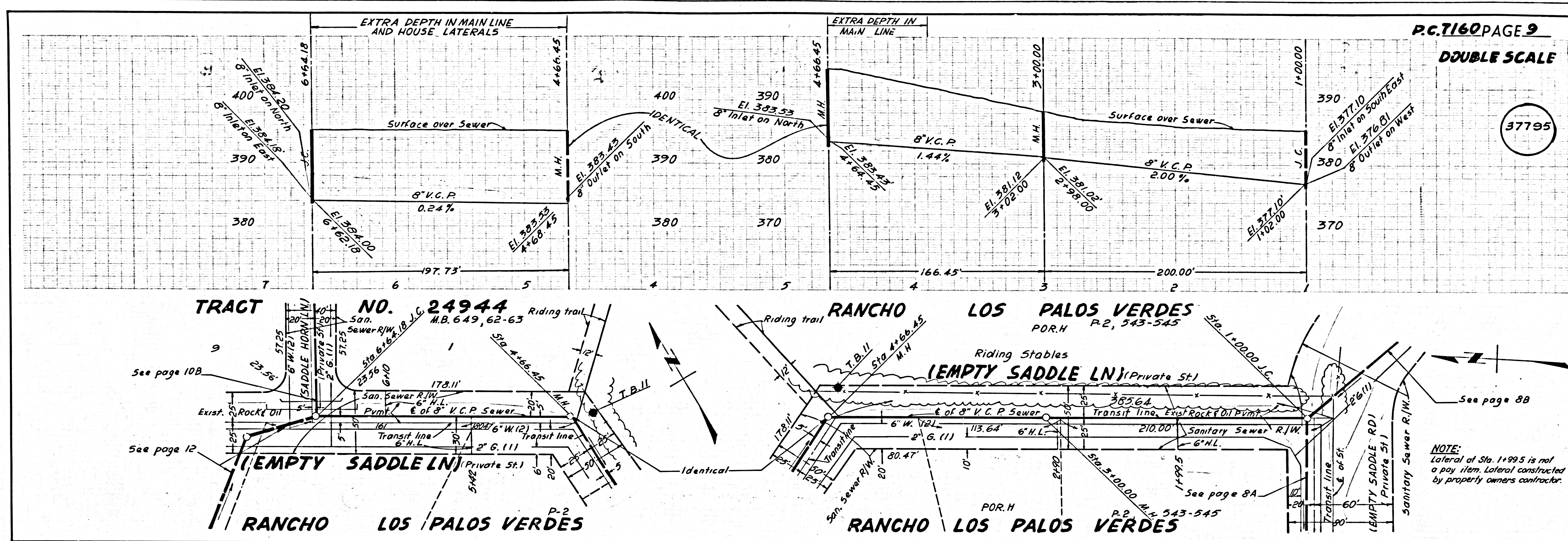


P.C. 7160

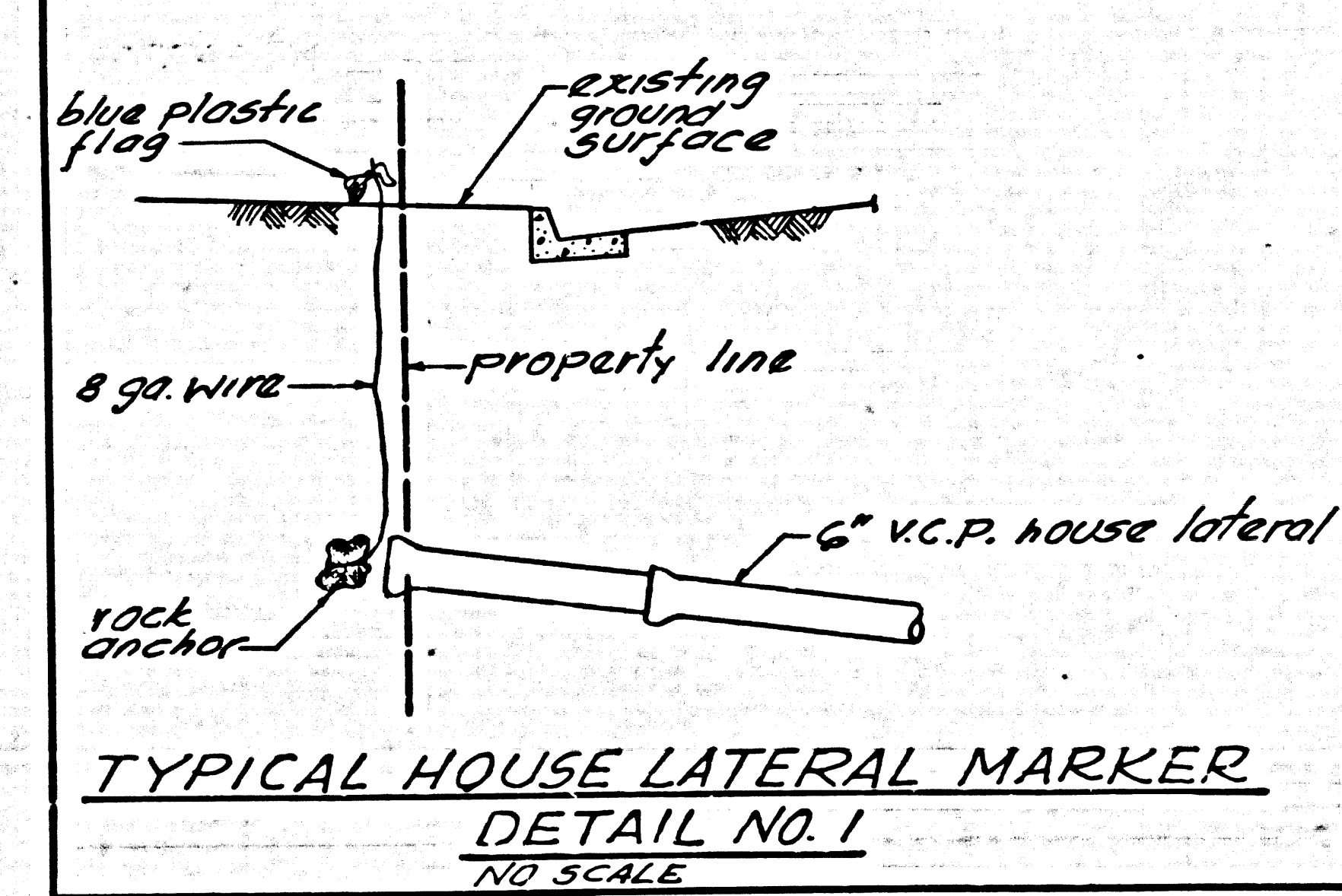
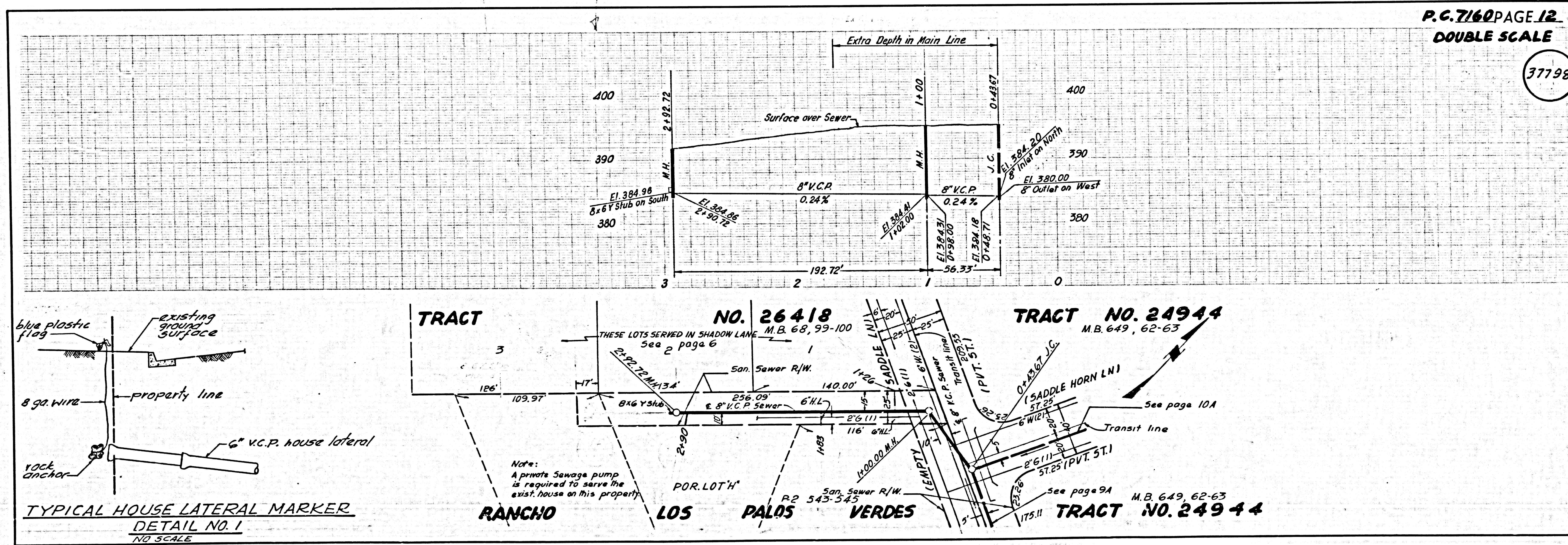
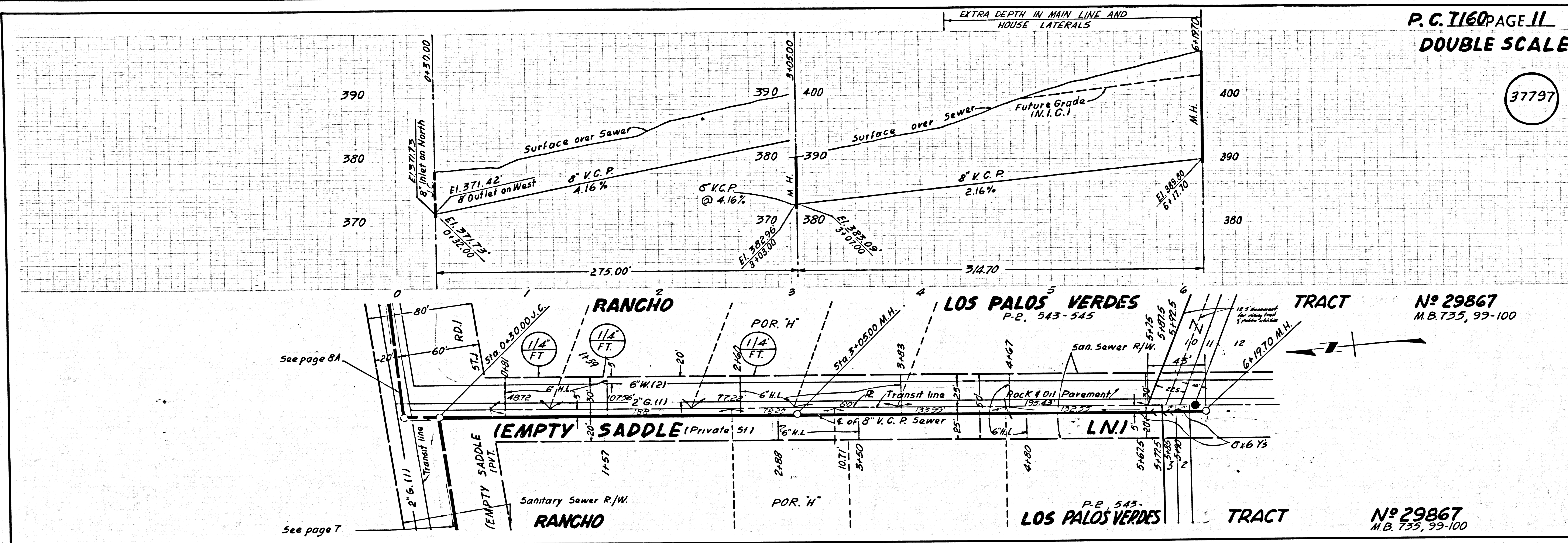












Note:  
A private Sewage pump  
is required to serve the  
exist. house on this property