

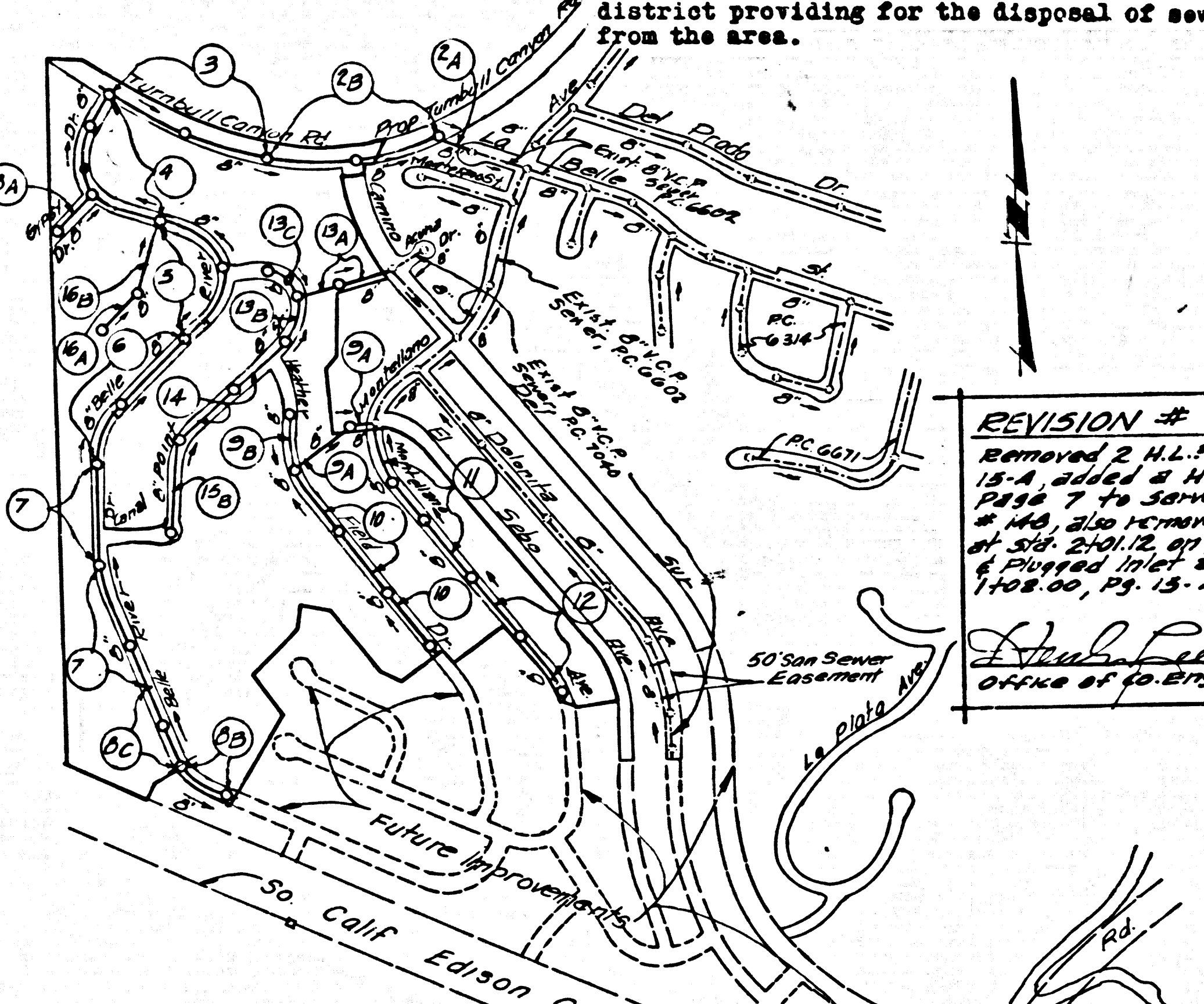
B.M. 56.1611 ELEV. 574.206  
 at end of Conc. Ret.  
 wall around house no. 13300, LOS  
 Aires Dr. 31' 3" of E of 600' E.  
 of La Cuesta Ave.  
**WHITTIER QUAD. 19 60**

Any connection to the sewer system of County Sanitation District, provided directly or indirectly by the sewers shown on these plans, shall be considered a temporary connection until all area sewered is annexed to said district, at which time the connection shall be made permanent. If for any reason the annexation to the district of any area sewered hereunder is not completed, the property not in the district will be required to disconnect unless a contract is entered into with the district providing for the disposal of sewage from the area.

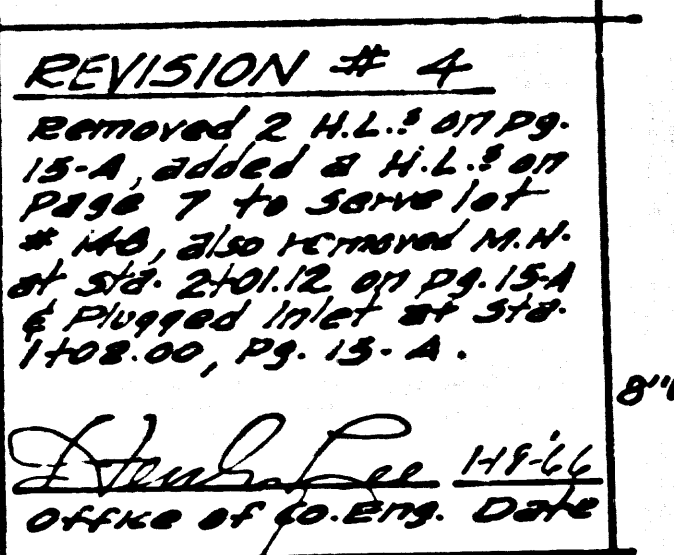
**REVISION # 3**  
 Raised Manholes Sewer & Curbs  
 9' depth over 5' sewer  
 11-20-65  
 OFFICE OF COUNTY ENGINEER DATE

**NOTE: BY PRIVATE ENGINEER**  
 The existence and approximate location of underground utilities or structures was determined by a search of the available public records, to the best of our knowledge there are no existing underground utilities or structures except as shown on these plans.  
 The contractor is required to take due precautionary measures to protect the utilities or structures shown and any other utilities or structures at the site. It shall be the contractor's responsibility to notify the owners of the utilities or structures concerned before starting work.

NO CONNECTIONS FOR THE DISPOSAL OF INDUSTRIAL WASTES SHALL BE MADE TO SEWERS SHOWN ON THESE DRAWINGS WITHOUT WRITTEN PERMISSION FROM THE CHIEF ENGINEER AND GENERAL MANAGER OF THE COUNTY SANITATION DISTRICTS.



**INDEX MAP**  
 TRACT No 29942  
 P.C. 7163  
 SCALE: 1" = 600'



**BAFFLE BOARD DETAIL**  
 No Scale

**NOTES:**  
 1. Each end of baffle board will extend one foot into unobstructed ground.  
 2. Baffle boards shall be spaced so that the top of the lower board shall be 1/2" with the bottom of the next higher board.  
 3. The upper ends of baffle boards shall be one foot minimum above the top of the pipe and shall be firmly secured to the pipe with fastenings of same type as those on all other stages or levels in the same sewer line.  
 4. Baffle boards shall be adequately water-tight until ground is restored.

**REVISION**  
 Lowered Grades & Revised Surface Over Sewer between 5th, 2nd & 1st Sts. on Page 13-A  
 APPROVED: [Signature] DATE: 5-11-65  
 OFFICE OF COUNTY ENGINEER

**DOUBLE VERTICAL SCALE**  
**LA PUENTE BLDG. DIST. NO. 2**

- PROVIDE STAKES ON THE PROPERTY LINE OR PROPERTY LINES PRODUCED AT RIGHT ANGLES TO THE SEWER LINE AT THE CENTER LINE OF EACH MANHOLE.
- NO REPRESENTATIVE OF THE COUNTY ENGINEER WILL SURVEY OR LAY OUT ANY PORTION OF THE WORK.
- THE PRIVATE ENGINEER SHALL FURNISH THE COUNTY ENGINEER WITH GRADE SHEETS AND STATIONING FOR ALL HOUSE LATERALS AND T-BRANCHES AND SHALL PROVIDE STAKES FOR THEM AT THEIR PROPER LOCATIONS WITH STATIONING PLAINLY MARKED. ALL HOUSE LATERALS SHALL BE CONSTRUCTED IN A STRAIGHT ALIGNMENT AT RIGHT ANGLES FROM THE MAIN LINE SEWER EXCEPT AS SHOWN ON THE PLANS. HOUSE LATERALS FROM CHIMNEYS SHALL NOT HAVE AN ANGLE OF LESS THAN 45° WITH THE MAIN LINE SEWER. ANY CHANGE IN ALIGNMENT SHALL BE REQUESTED BY WRITING BY THE PRIVATE ENGINEER.
- THE PRIVATE ENGINEER SHALL FURNISH THE HOUSE LATERAL DEPTH AT THE PROPERTY LINE BELOW THE TOP OF CURB ELEVATION FOR EACH HOUSE LATERAL ON THE GRADE SHEET.
- NO REVISIONS SHALL BE MADE IN THESE PLANS WITHOUT THE APPROVAL OF THE COUNTY ENGINEER.
- THE CONTRACTOR SHALL NOTIFY THE CONSTRUCTION DIVISION BY TELEPHONE, MADISON 9-4747, EXT. 1559, AT LEAST TWENTY-FOUR HOURS BEFORE STARTING ANY WORK UNDER THIS CONTRACT.
- MANHOLES SHALL BE BRICK SEWER STRUCTURES PER S-104. PRECAST CONCRETE MANHOLES PER S-133 OR S-173 MAY BE USED AS AN ALTERNATE IN LOCATIONS APPROVED BY THE COUNTY ENGINEER.
- USE STANDARD MANHOLE FRAMES AND COVERS, S-117, EXCEPT AS NOTED.
- MANHOLE TOPS IN UNIMPROVED RIGHTS-OF-WAY TO BE SIX INCHES ABOVE FINISHED GRADE.
- USE EXTRA STRENGTH PIPE. ALL PIPE IS STANDARD DEPTH EXCEPT AS NOTED.
- USE CHAMBER MORTAR OR MECHANICAL COMPRESSION JOINTS FOR ALL V.C.P. JOINTS PER SPECS., SECS. 34, 44 & 45.
- WHERE EVER SHOWN OR INDICATED DURING THE CONSTRUCTION OF THE SEWER, THE V.C.P. JOINTS SHALL BE OF JOINT COMPOUND PER SPECS., SECS. 34 & 44, OR MECHANICAL COMPRESSION JOINTS PER SPECS., SEC. 11.
- IF A POWER POLE IS WITHIN THREE FEET OF THE SEWER, THE SEWER SHALL BE ENCASED, PER S-172, CASE III, TWO FEET ON EITHER SIDE FROM THE POINT OF INTERFERENCE.
- IF DURING THE COURSE OF CONSTRUCTION IT IS DETERMINED THAT THERE IS LESS THAN FOUR FEET OF COVER OVER THE TOP OF A MAIN LINE OR HOUSE LATERAL V.C.P. SEWER WHICH IS NOT INDICATED ON THE PLANS, THE PIPE SHALL BE ENCASED PER S-172, CASE III, UNLESS OTHERWISE APPROVED BY THE COUNTY ENGINEER.
- HOUSE LATERALS TO BE CONSTRUCTED WITH INVERTS AT PROPERTY LINE. ... FEET BELOW CURB GRADE EXCEPT AS NOTED.
- RESURFACE ALL TRENCHES WITHIN PAVED AREAS TO MEET L.A. COUNTY ROAD DEPT. OR CALIFORNIA STATE HIGHWAY REQUIREMENTS IN ACCORDANCE WITH PERMITS.
- FOR ALTERNATE SEWAGE TREATMENT USE FORMULA NO. 2, SPECS. SEC. 54.
- ALL STAKE AND LOCAL TRENCH SAFETY ORDERS WILL BE RIGIDLY ENFORCED.
- CONSTRUCTION IN FILLED AREAS:  
 (a) An acceptable certification of compaction test results shall be submitted in accordance with S.T.M. 514 Method of Test D-630-42 T. to Const. Div.  
 (b) No construction is permitted in filled areas when the relative density of compaction is less than 90%.  
 (c) If the relative density of compaction is less than 90%, all slope and local trench safety orders will be rigidly enforced.  
 (d) Special test-hole borings shall be drilled per S-2-166 or have a special base course per S-2-172 Case III.  
 (e) Special test-hole borings shall be drilled per S-2-172 Case III.  
 (f) If the relative density of compaction is 90% or greater, the special provisions in (c) and (d) are not required.
- Figures in circles at ends of house laterals indicate invert depths below top of curb at property line.
- 5/8" in Circles indicate H.L. of sewer must not be Const. upstream of that site.

**COLLECT CHARGES**  
**AS INDICATED**  
 Gerald M. Kenny 12-9-64

PROFILE ALIGNMENT AND GRADE OF  
**SANITARY SEWERS** P.C. 7163  
 PAGE 1

CONSTRUCTED IN  
**TRACT No 29942**  
**PRIVATE CONTRACT NO. 7163**

W.S. 37  
 8 SHEETS, 16 PAGES  
 SCALE: VERT. 1" = 8'  
 HORIZ. 1" = 40'  
 NOV. 1964  
 PREPARED IN THE OFFICES OF  
**HEMMER ENGR. CO. INC.**  
 145 N. PANTER AVE. WHITTIER, CALIF.  
 BY: Robert R. Flores  
 REG. C.E. NO. 11349

40816

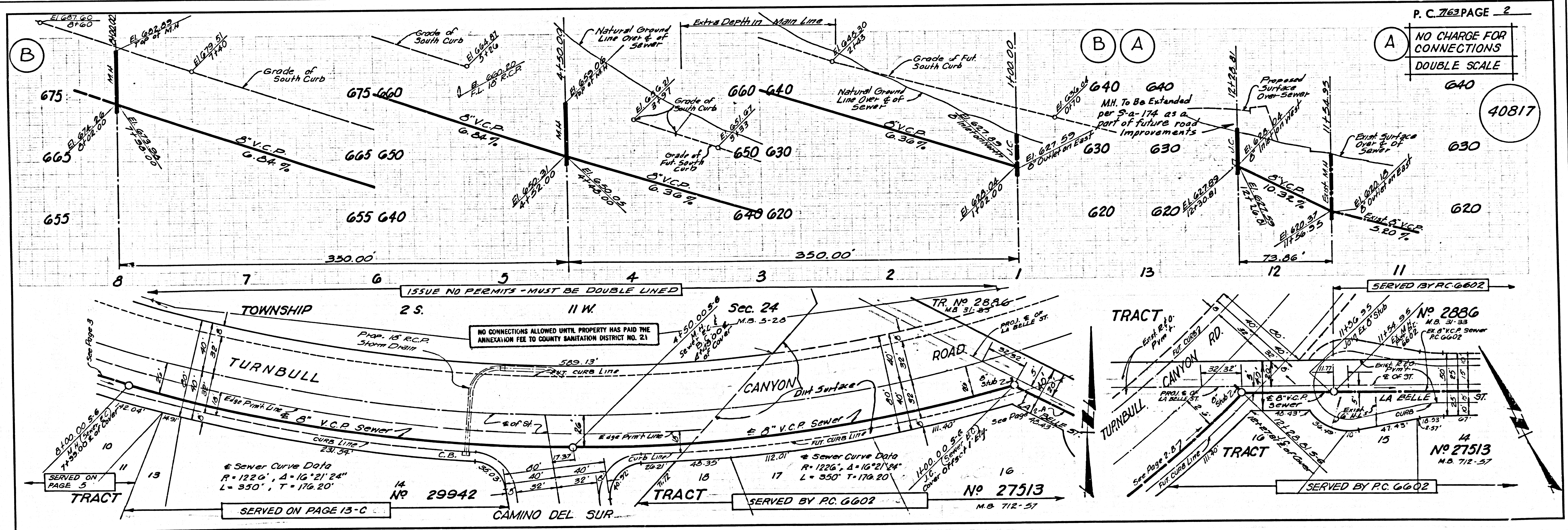
FOR LEGEND SEE PLAN NO. S-64  
 GRADES TO WHICH THIS IMPROVEMENT IS TO BE CONSTRUCTED ARE SHOWN ON PLANS AND PROFILES. GRADE POINTS FOR TOP OF CURB, CENTER LINE OF STREETS, OR CENTER LINE OF ALLEYS ARE SHOWN BY CIRCLES ON PROFILES. AT ALL POINTS BETWEEN DESIGNATED POINTS THE GRADE SHALL BE ESTABLISHED SO AS TO CONFORM TO A STRAIGHT LINE BETWEEN SAID DESIGNATED POINTS. ELEVATIONS ARE IN FEET ABOVE U.S.C. & G.S. SEA LEVEL DATUM OF 1929.  
 THE DRAWING AND THE DATA HEREON ARE HEREBY MADE A PART OF THE SPECIFICATIONS.  
 WORK SHALL BE CONSTRUCTED ACCORDING TO THE STANDARD SPECIFICATIONS DATED 12-28-62 ON FILE IN THE OFFICE OF THE COUNTY ENGINEER AND SHALL BE PROTECTED ONLY AT THE PRESENCE OF THE COUNTY ENGINEER.  
 BEFORE WORK CAN BE STARTED, THE CONTRACTOR MUST OBTAIN A PERMIT TO EXCAVATE IN COUNTY STREETS FROM THE L.A. COUNTY ROAD DEPT., DISTRICT OFFICE NO. 1, AND A PERMIT TO THE COUNTY ENGINEER, ROOM 300, COUNTY ENGINEER'S BUILDING, 108 WEST SECOND STREET, LOS ANGELES, CALIFORNIA. THE PERMIT MUST BE OBTAINED FROM THE STATE OF CALIFORNIA, DIVISION OF HIGHWAYS, 120 SOUTH SPRING STREET, LOS ANGELES, CALIFORNIA.  
 APPROVAL OF THIS PLAN BY THE COUNTY OF LOS ANGELES DOES NOT CONSTITUTE A REPRESENTATION AS TO THE ACCURACY OF THE LOCATION OR THE EXISTENCE OR NON-EXISTENCE OF ANY UNDERGROUND UTILITY PIPE, OR STRUCTURE WITHIN THE LIMITS OF THIS PROJECT. THIS NOTE APPLIES TO ALL PAGES.

COUNTY OF LOS ANGELES, CALIFORNIA  
 JOHN A. LAMBIE, COUNTY ENGINEER  
 J. D. PARKHURST, CHIEF ENGINEER  
 CO. SAN. 911  
 APPROVED BY: [Signature] ASSISTANT SANITATION ENGINEER  
 APPROVED BY: [Signature] OFFICE ENGINEER

SUBMITTED BY: Gordon W. Keigh  
 SAN. 410-5  
 CHECKED BY: [Signature] 12-10-64  
 REG. C.E. NO. 111636

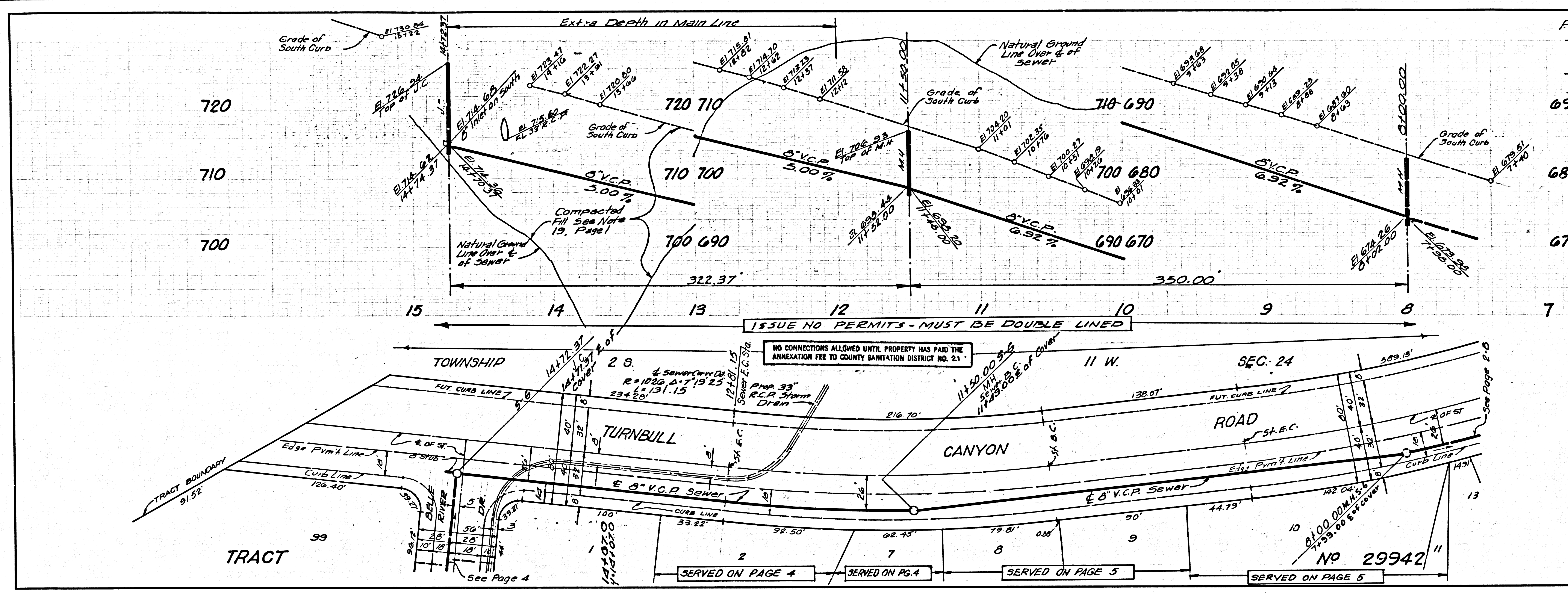
**REVISION # 2**  
 Revised Sewer Lines & Surface  
 Over Sewer on Pgs. 3-A & 13-A  
 APPROVED: [Signature] DATE: 5-17-65  
 OFFICE OF COUNTY ENGINEER

J.N. 0364-37



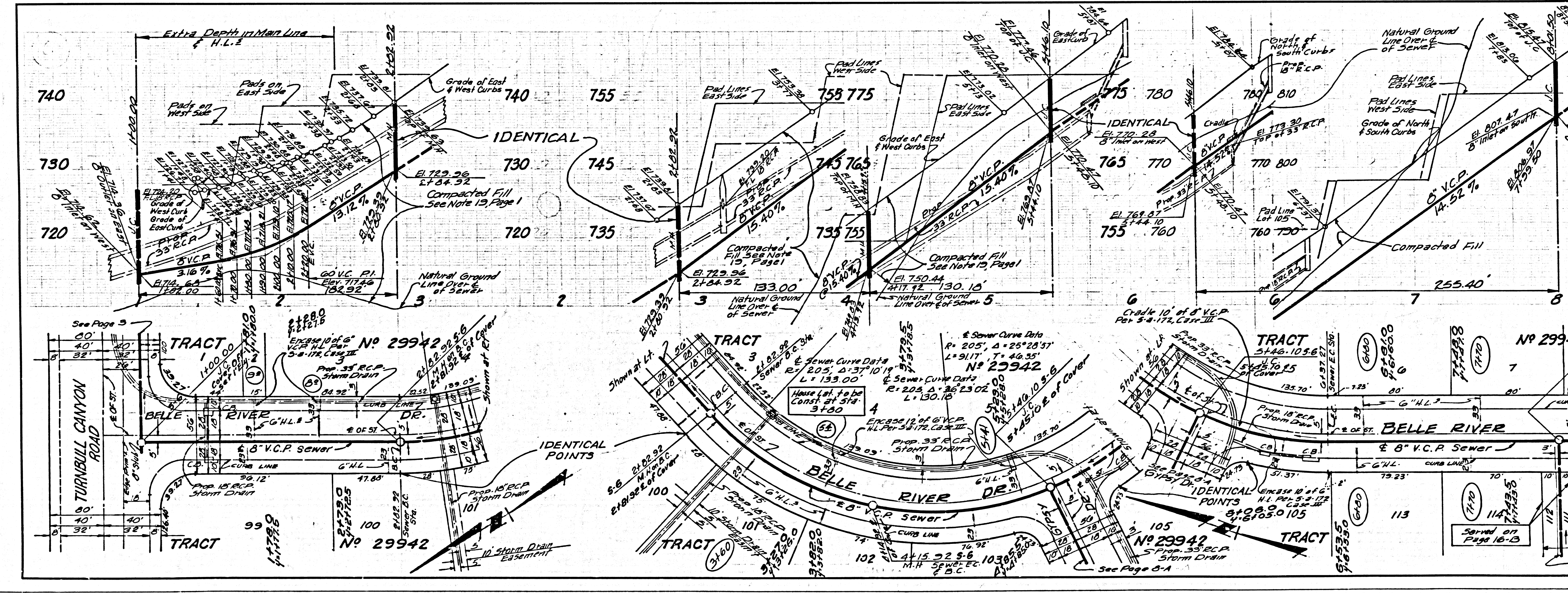
P.C. 7163 PAGE 2  
**NO CHARGE FOR CONNECTIONS**  
**DOUBLE SCALE**

40817



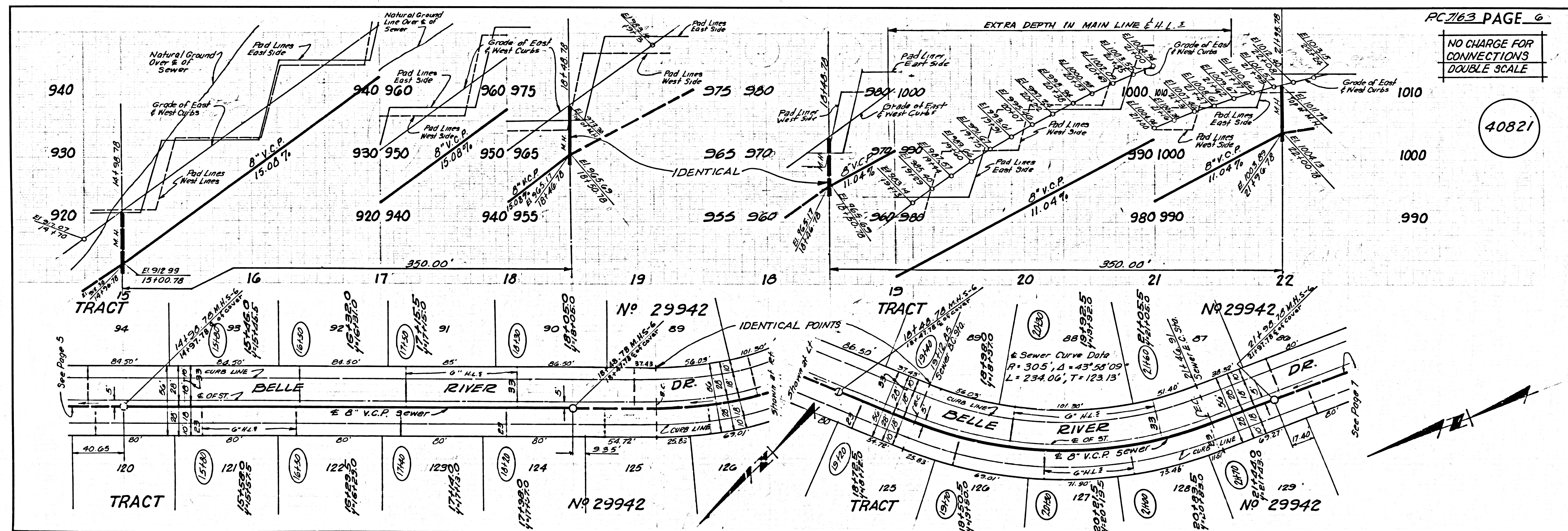
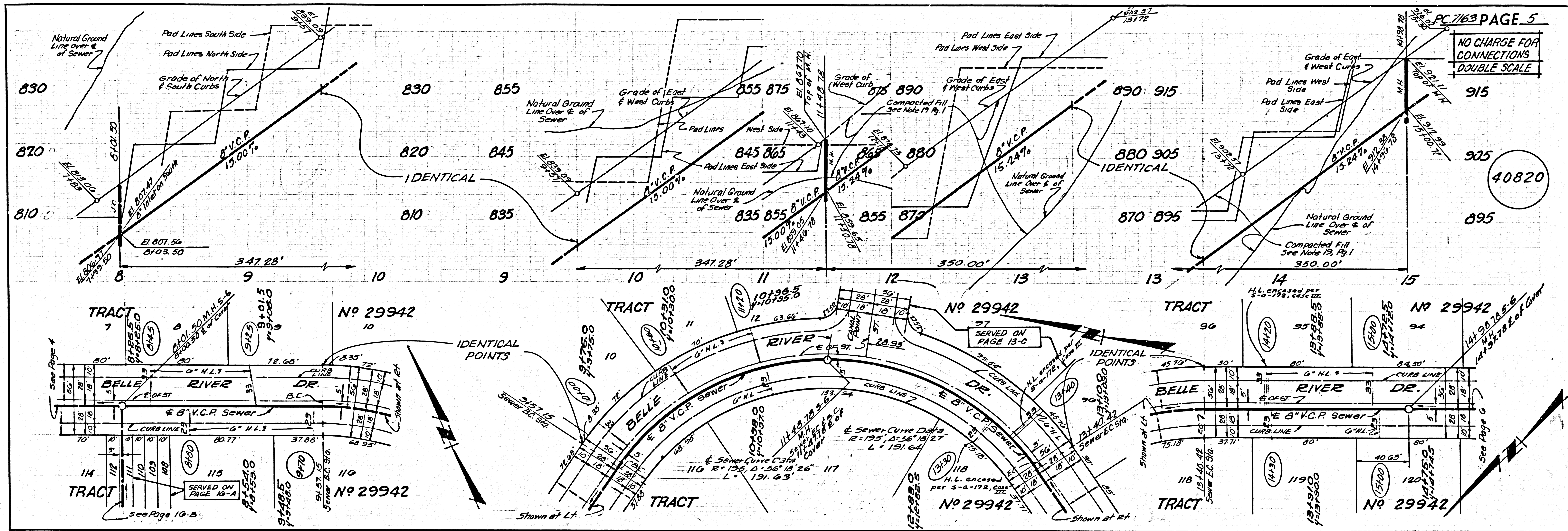
PC 7163 PAGE 3  
 NO CHARGE FOR CONNECTIONS  
 DOUBLE SCALE

40818

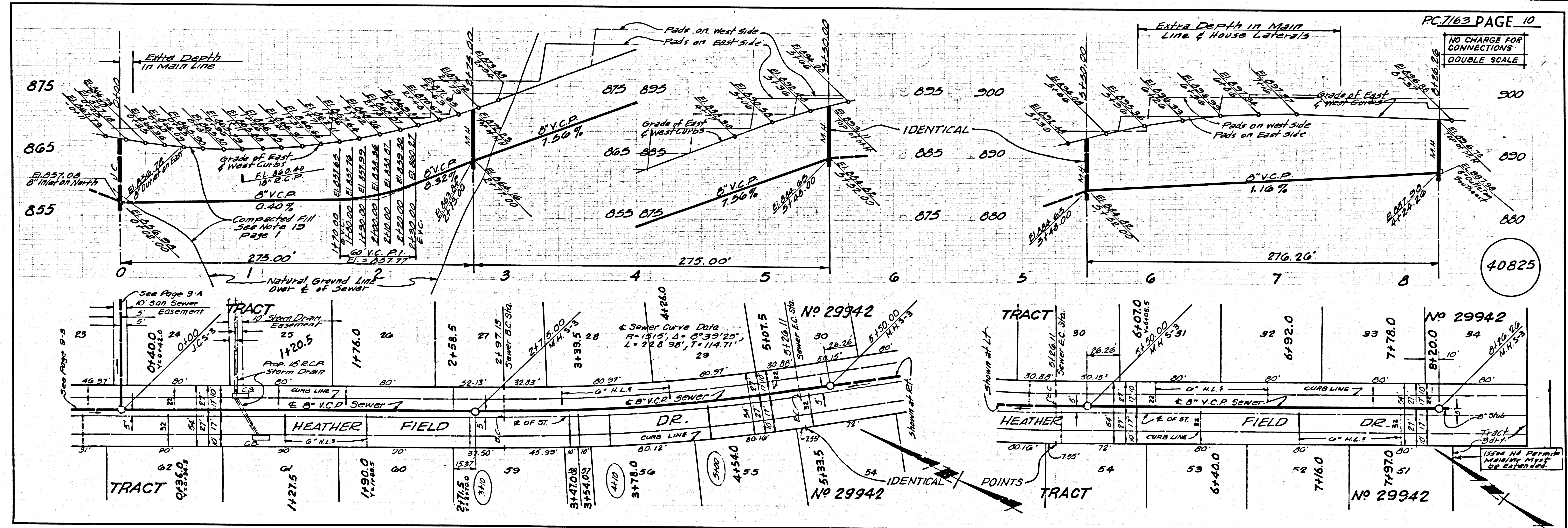
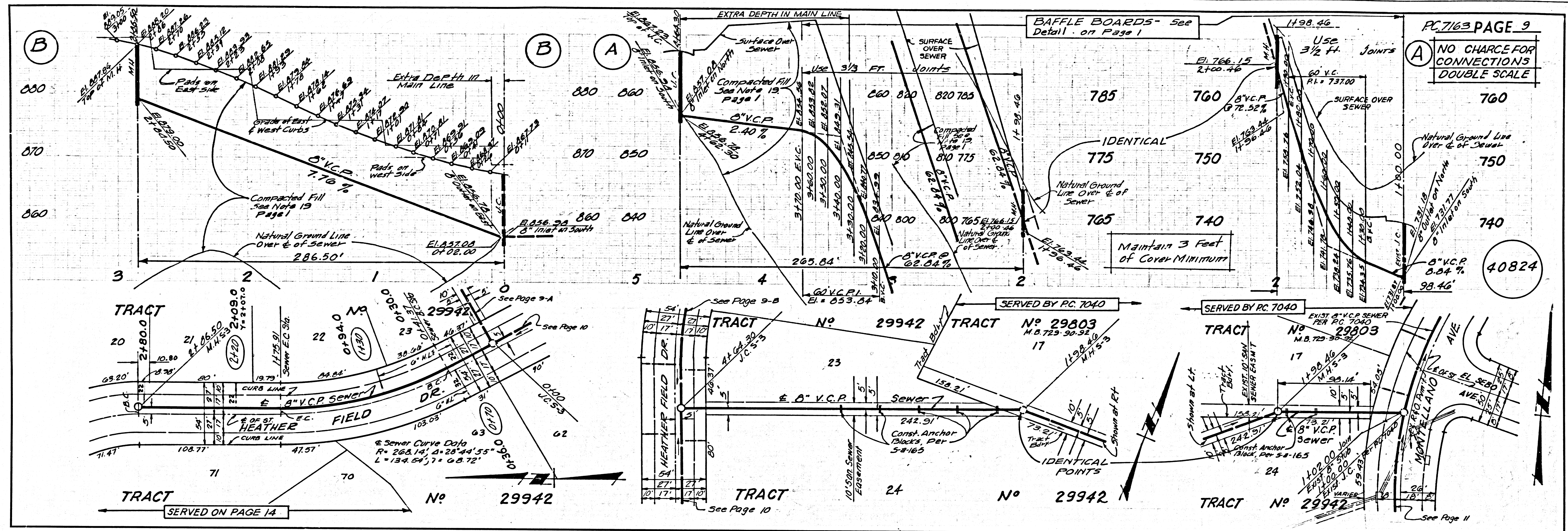


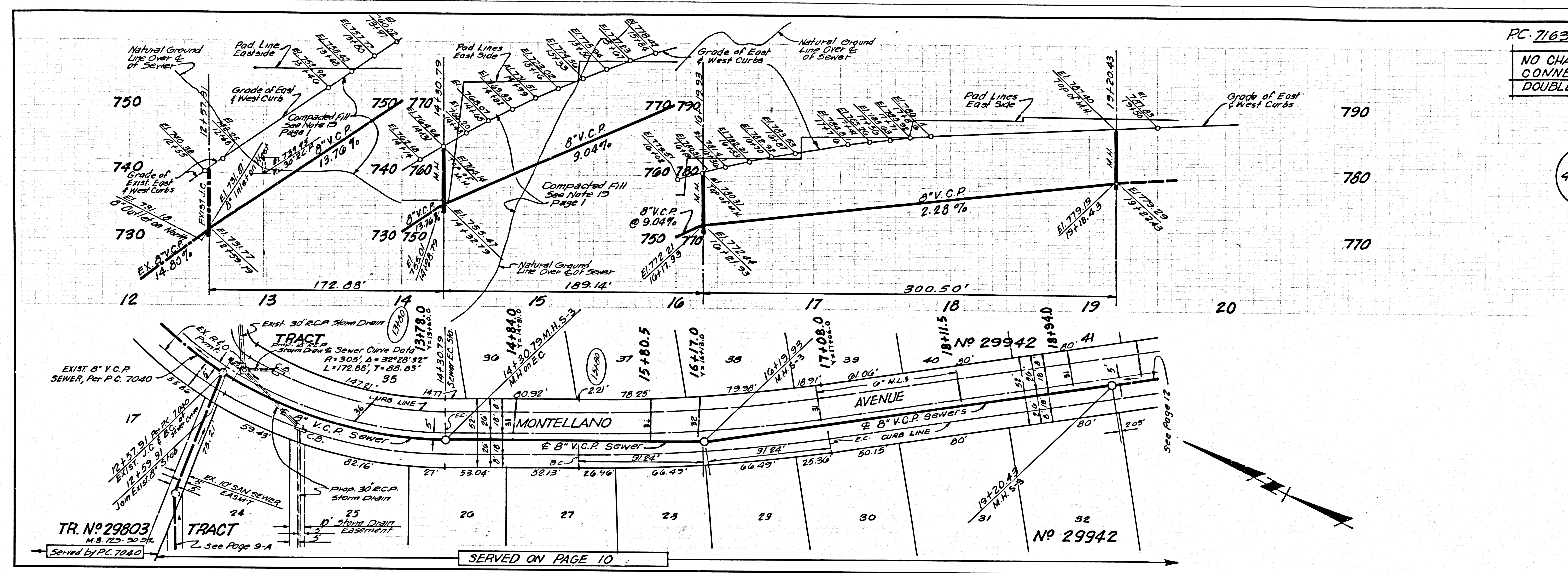
PC 7163 PAGE 4  
 NO CHARGE FOR CONNECTIONS  
 DOUBLE SCALE

40819



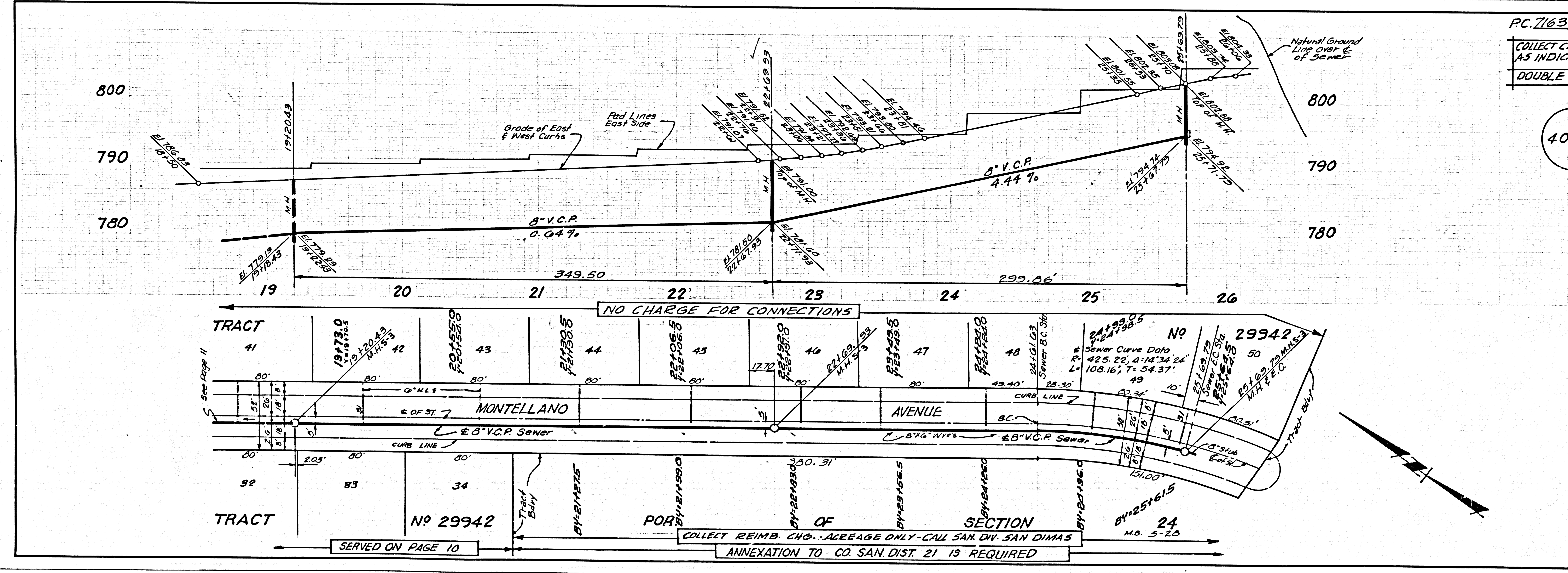






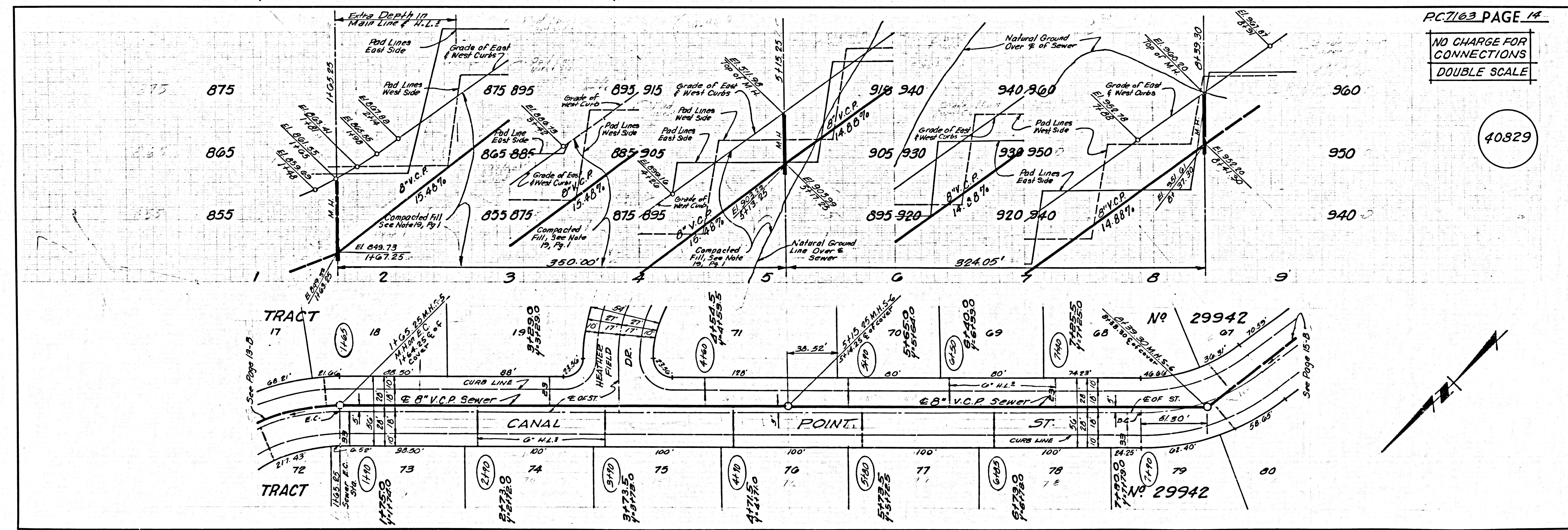
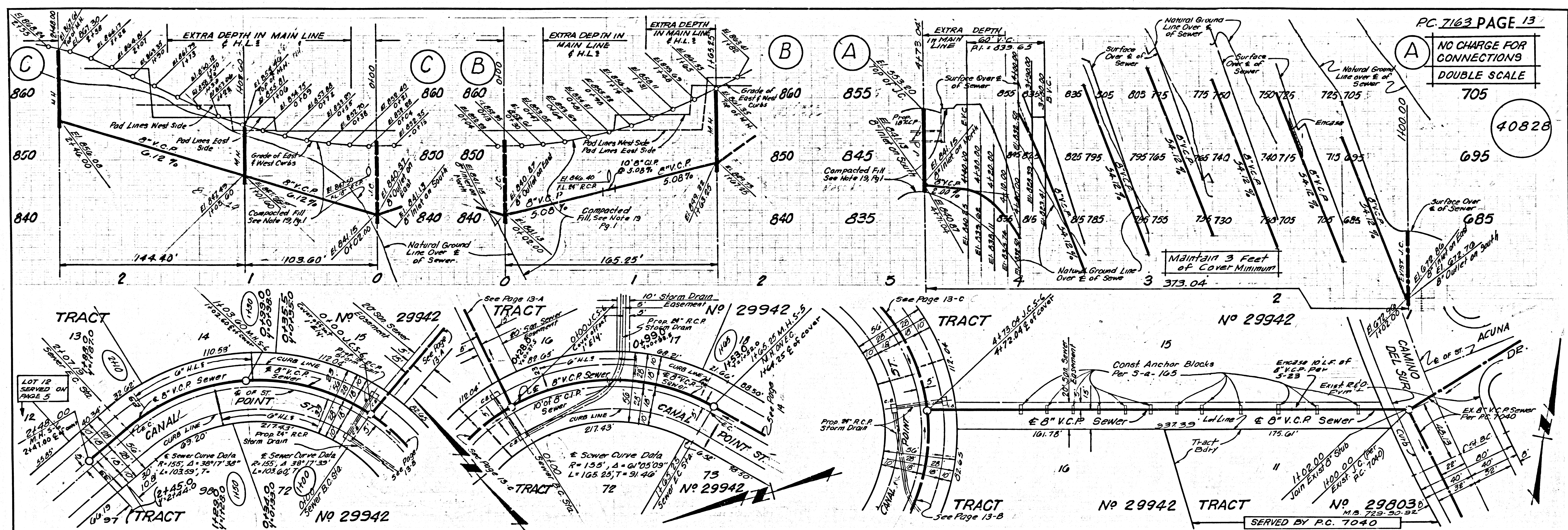
PC 7163 PAGE 11  
 NO CHARGE FOR CONNECTIONS  
 DOUBLE SCALE

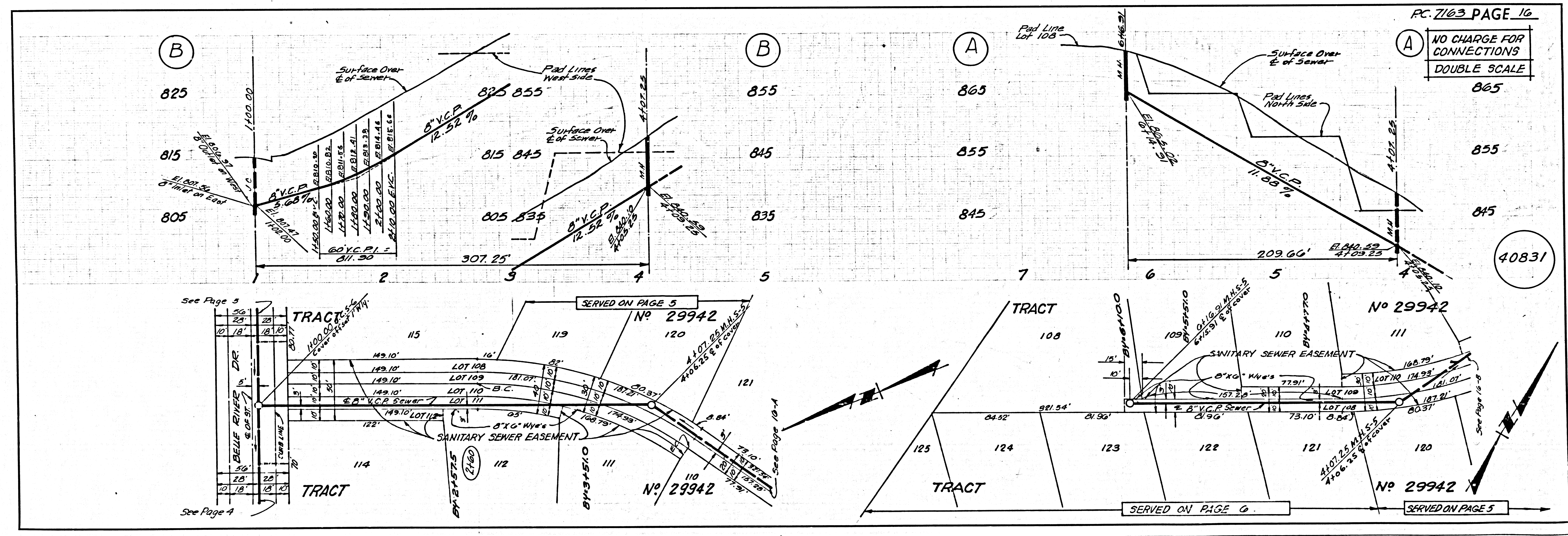
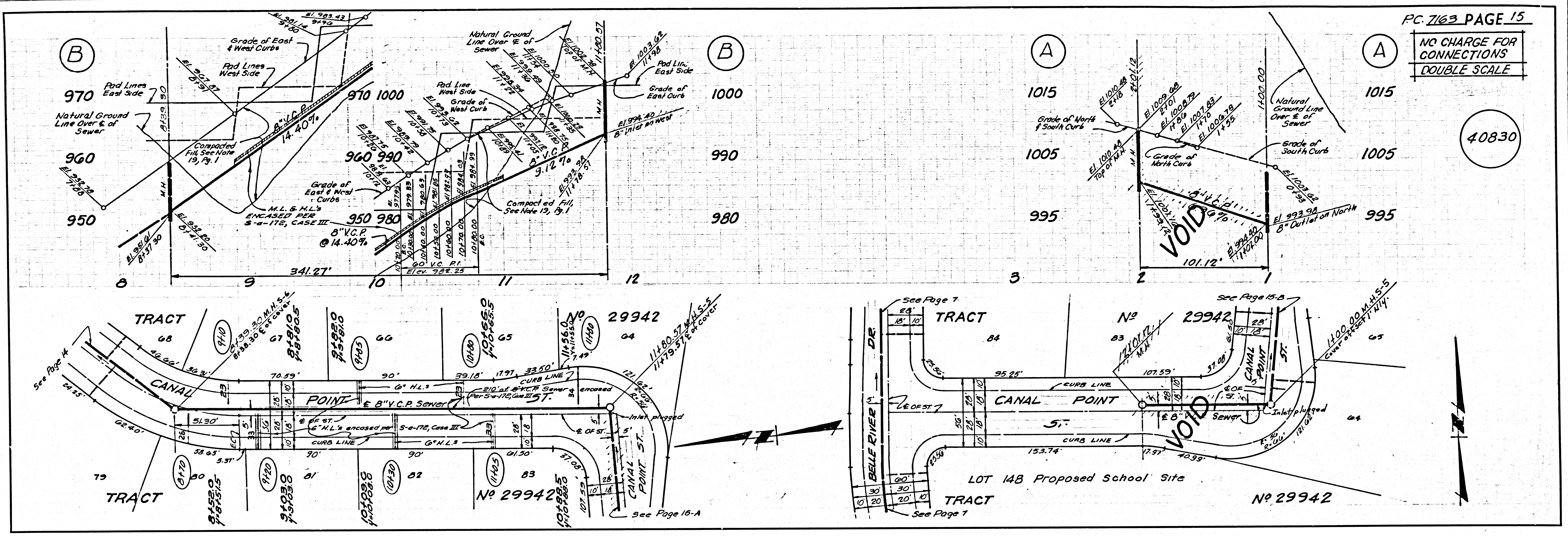
40826



PC 7163 PAGE 12  
 COLLECT CHARGES AS INDICATED  
 DOUBLE SCALE

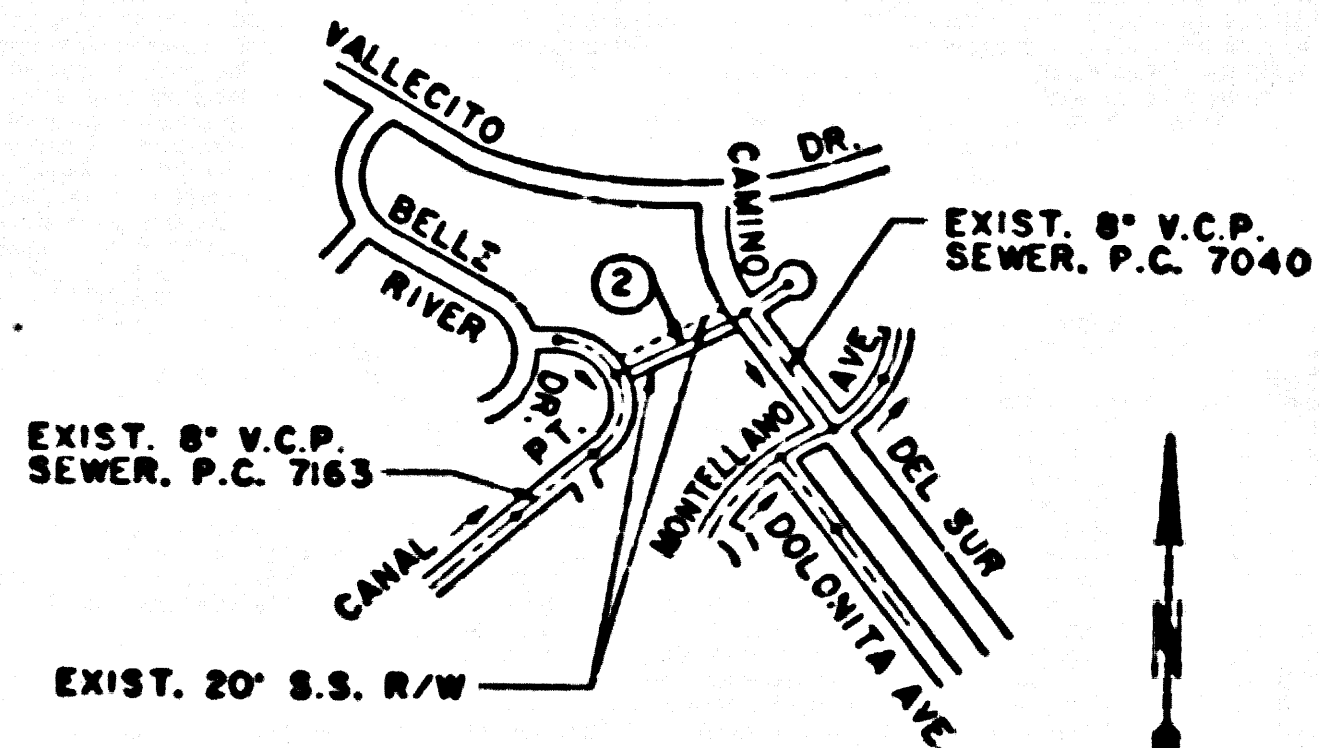
40827







BM C-9 ELEV. 679.29  
 R.D.L.B. - 1029-202  
 L. & BR. CONC. CB. 2 5/8" NLY 8 2 3/4"  
 ELY & INT. CAMINO DEL SUR & ACUNA DR.  
 WHITTIER QUAD 1970



NOTE:  
 NUMBER IN CIRCLE INDICATE PAGE NUMBER

INDEX MAP

C.C. 11257  
 SCALE: 1" = 600'  
 THOMAS BROS. (OLD): 85, C-4  
 THOMAS BROS. (NEW): 677, J-5

NO CONNECTION FOR THE DISPOSAL OF INDUSTRIAL WASTES SHALL BE MADE TO SEWERS SHOWN ON THESE DRAWINGS UNTIL A PERMIT FOR INDUSTRIAL WASTEWATER DISCHARGE HAS BEEN ISSUED BY THE SANITATION DISTRICTS FOR SAID CONNECTION.

BEFORE BREAKING INTO OR CONSTRUCTION ON A COUNTY SANITATION DISTRICT SEWER AND PRIOR TO FINAL ACCEPTANCE OF THE PROJECT, SANITATION DISTRICT INSPECTOR SHALL BE NOTIFIED BY PHONE (818) 962-8605 SO THAT REQUIRED INSPECTION CAN BE MADE.

GENERAL NOTES:  
 REFER TO SECTION 7-10.4.1 OF STANDARD SPECIFICATIONS REGARDING SAFETY OPERS.  
 "T" OR "Y" BRANCHES MAY BE USED FOR CONNECTIONS TO MAIN LINE SEWER, EXCEPT AS NOTED.  
 DUCTILE IRON PIPE SHALL BE RESTRAINED JOINT PIPE. (SEE SPECIFICATIONS)  
 DNR RECORDS INDICATING CONNECTIONS TO THE EXISTING SEWER TO BE ABANDONED THE CONTRACTOR SHALL RECONNECT ANY LATERALS FOUND DURING THE CONSTRUCTION OF THIS PROJECT.  
 SEWERS TO BE TESTED FOR LEAKAGE PER SECTION 354-14.1 OF STANDARD SPECIFICATIONS AND SPECIAL PROVISIONS (AIR PRESSURE TEST ONLY)  
 IF A POWER POLE IS WITHIN THREE FEET OF THE SEWER, THE SEWER SHALL BE ENCASED. PER 2023-0, CASE II, TWO FEET OR EACH SIDE FROM THE POINT OF INTERFERENCE.  
 THE CONTRACTOR SHALL MAINTAIN SERVICE AT ALL TIMES DURING THE CONSTRUCTION OF THIS PROJECT.  
 ALL HOUSE LATERALS SHALL BE CONSTRUCTED IN A STRAIGHT LINE AND AT RIGHT ANGLES FROM THE MAIN LINE SEWER EXCEPT AS SHOWN ON THE PLANS. HOUSE LATERALS FROM CHIMNEYS SHALL NOT HAVE AN ANGLE OF LESS THAN 45 DEGREES WITH THE MAIN LINE SEWER  
 ALL CONCRETE CROSS CUTTERS, CURBS, GUTTERS, PAVEMENT, AND DRIVEWAYS SHALL BE TUNNELED OR JACKED AS REQUIRED PER LOS ANGELES COUNTY FIELD INSPECTOR.

PRIME CONTRACTOR LICENSE REQUIRED: A OR C-42

STANDARD PLANS:  
 THE FOLLOWING LATEST REVISED STANDARD PLANS ON FILE IN THE OFFICE OF THE LOS ANGELES COUNTY DEPARTMENT OF PUBLIC WORKS SHALL APPLY IN THE CONSTRUCTION OF THIS PROJECT:

LEGEND	2000-0	SPECIAL SUPPORT AND PROTECTION	(APWA) 224-0
MINIMUM PUBLIC SAFETY REQUIREMENT	6008-0	CRADLING AND ENCASUREMENT	2023-0
BRICK MANHOLE	(APWA) 203-0	STANDARD WYE OR TEE SUPPORT	2024-0
REINFORCED PRECAST CONCRETE MANHOLE	2003-0	ALLOWABLE TRENCH WIDTHS	2027-0
MANHOLE STEP	2013-0	LOCKING MANHOLE FRAME AND COVER	(APWA) 210-0
BEDDING FOR SEWER PIPE	2021-0	NON-REINFORCED PRECAST CONCRETE MANHOLE	2001-0
		PIPE ANCHORS	(APWA) 221-0
		EROSION PROTECTION IN STEEP SLOPES	2026-0

THE CONTRACTOR SHALL OBTAIN THE FOLLOWING PERMITS PRIOR TO CONSTRUCTION:

STATE OF CALIFORNIA, DIVISION OF INDUSTRIAL SAFETY, PERMIT TO EXCAVATE

THE UNDERGROUND UTILITY COMPANIES WITHIN THE LIMITS OF THIS PROJECT ARE AS FOLLOWS:

- (1) So. Cal. Edison Co. (4) So. Cal. Gas Co.
- (2) General Telephone Co. (5)
- (3) San Gabriel Valley Water Co. (6)

CASH CONTRACT 11257

(REFERENCE P.C. 7163)

SANITARY SEWERS

TO BE CONSTRUCTED IN

SEWER EASEMENT BETWEEN CANAL POINT STREET

AND CAMINO DEL SUR

AND OTHER RIGHTS OF WAY

1 SHEET: 2 PAGES

SCALE: VERT. 1" = 20' HORIZ. 1" = 20' JUNE, 1923

COUNTY OF LOS ANGELES, CALIFORNIA  
 THOMAS A. TIDEMANSON, DIRECTOR OF PUBLIC WORKS

APPROVED: [Signature] 6-30-23

RECOMMENDED BY: [Signature] 6-28-23

DESIGNED BY: [Signature] 6-28-23

APPROVED: [Signature] 7-12-23

NOTES:  
 THE CONTRACTOR SHALL NOTIFY THE CONSTRUCTION DIVISION BY TELEPHONE (818) 438-3141 AT LEAST 3 DAYS BEFORE STARTING ANY WORK UNDER THIS CONTRACT.

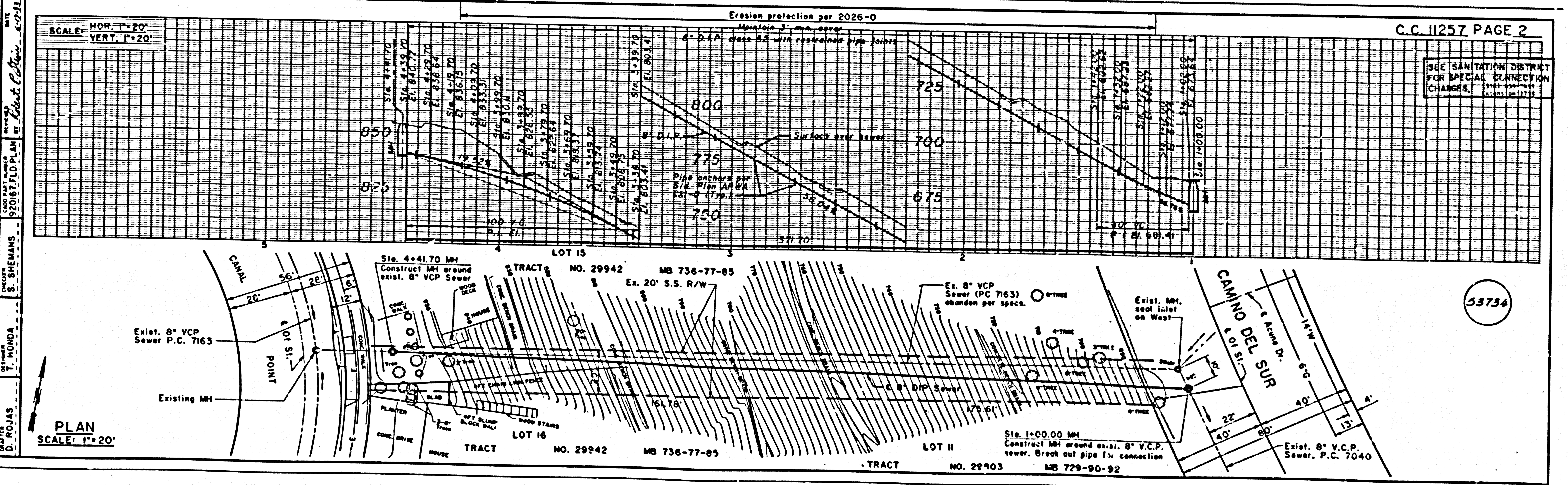
GRADES TO WHICH THIS IMPROVEMENT IS TO BE CONSTRUCTED ARE SHOWN ON PLANS AND PROFILES. GRADE POINTS FOR TOP OF CURB, CENTER LINE OF STREET OR CENTER LINE OF ALLEY ARE SHOWN BY CIRCLES ON PROFILES.

AT ALL POINTS BETWEEN DESIGNATED POINTS THE GRADE SHALL BE ESTABLISHED SO AS TO CONFORM TO A STRAIGHT LINE DRAWN BETWEEN SAID DESIGNATED POINTS.

ELEVATIONS ARE IN FEET ABOVE U.S.C. & G.S.S., SEA LEVEL DATUM OF 1929.

THIS DRAWING AND THE DATA HEREON ARE HEREBY MADE A PART OF THE SPECIFICATIONS.

LAYOUT	T. HONDA	CHECKED	S. SHEMANS
TRACED	D. ROJAS	MAINTENANCE	H. K. LUCASSEN
F.B. P.W.B. 1029		A.B. 8289	13 M.D. MAP 2173



PLAN SCALE: 1" = 20'

SEE SANITATION DISTRICT FOR SPECIAL CONNECTION CHANGES.

33734