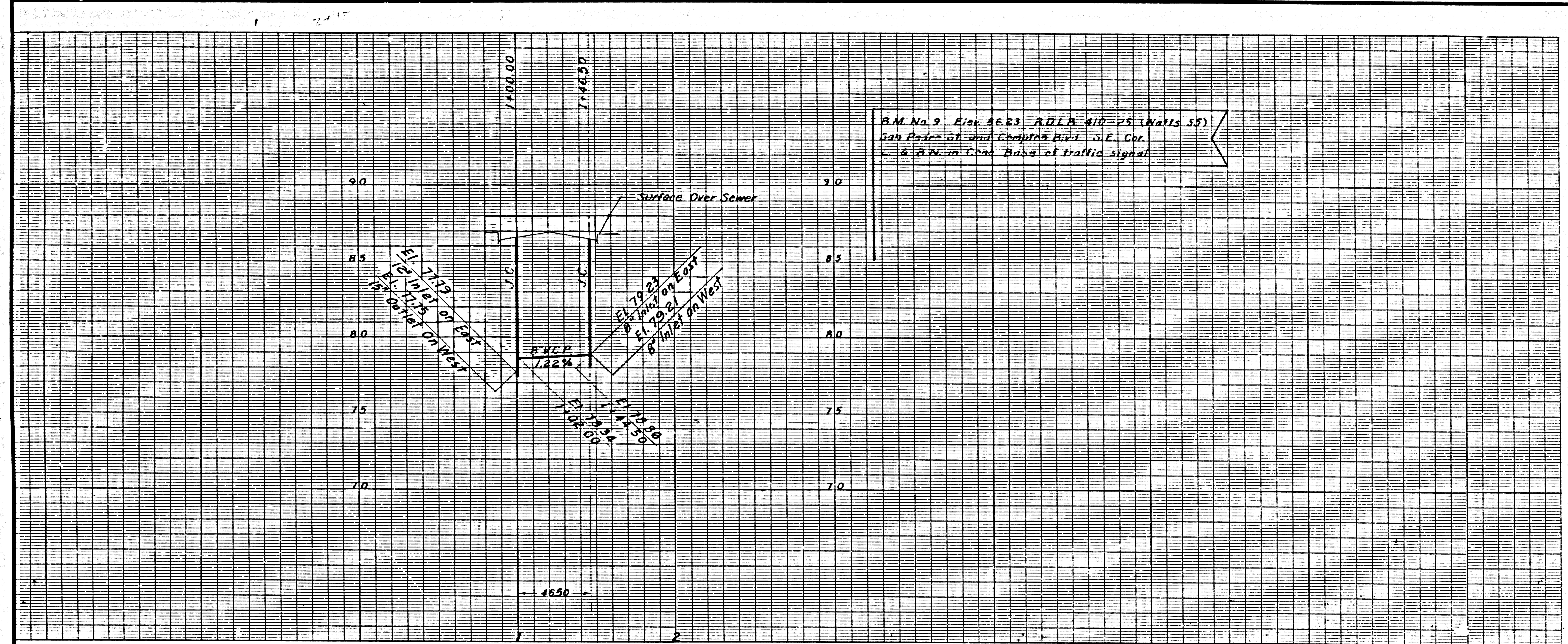


APPROVED *Robert Johnson* 3-12-69
 DESIGN SECTION DATE



B.M. No. 9 Elev. 4823 - R.D.L.B. 410-25 Watts St.
 2nd Corner of and Compton Blvd. S.E. Cor.
 1/2" & 2" in Comp. Base of Traffic Signal

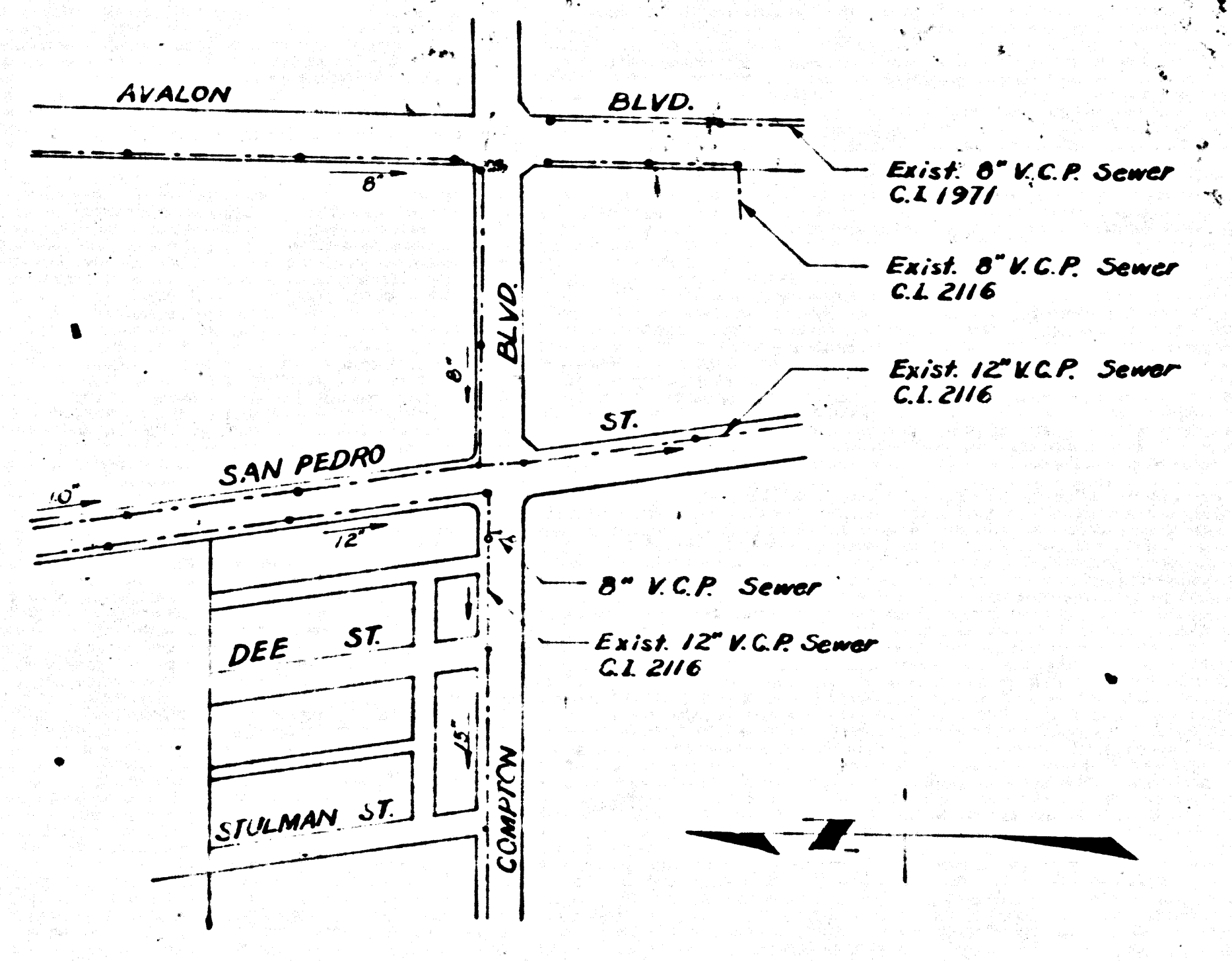
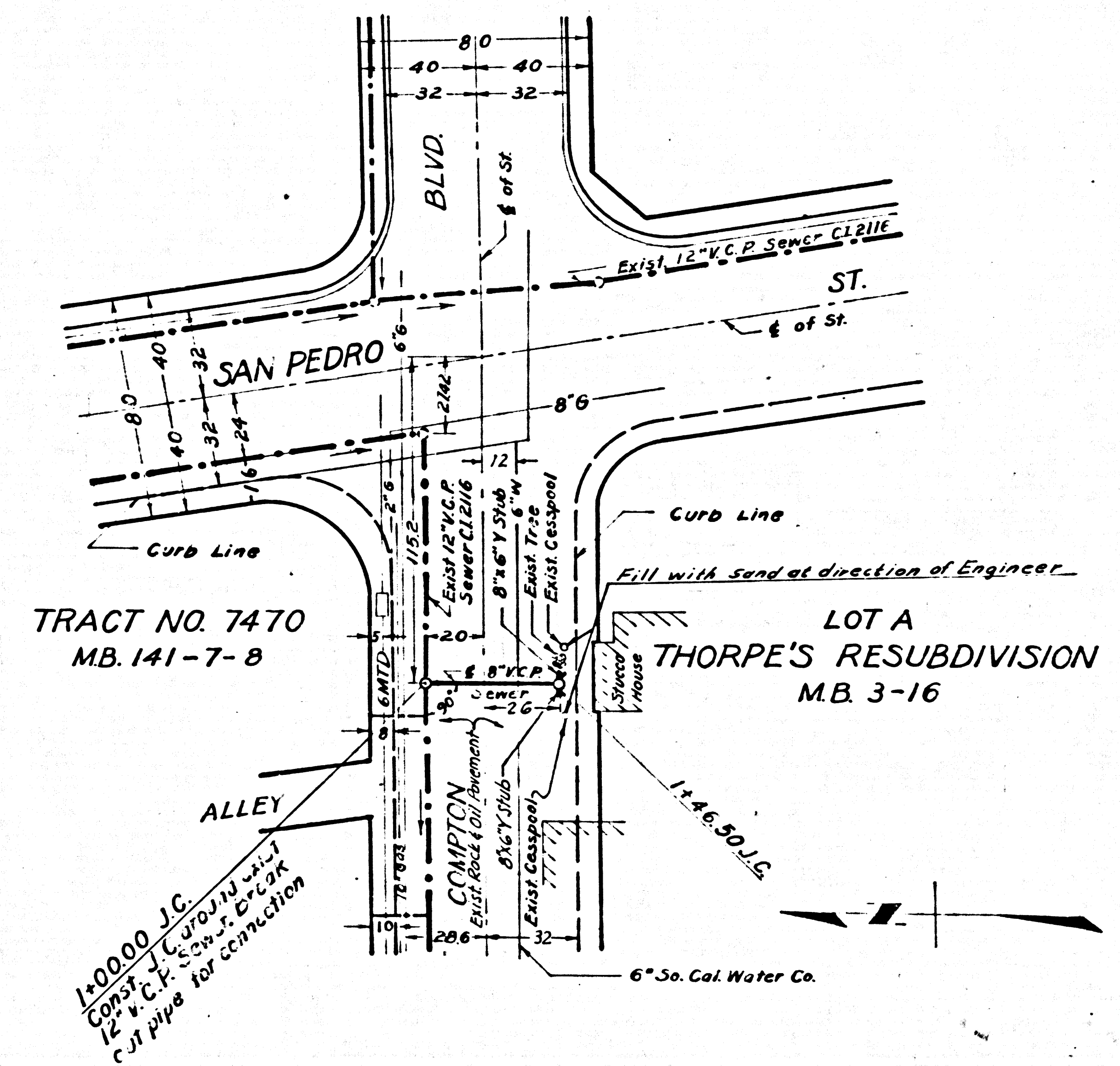
GENERAL NOTES

1. USE EXTRA STRENGTH V.C.P. ALL PIPE IS STANDARD DEPTH.
2. USE MECHANICAL COMPRESSION JOINTS FOR ALL V.C.P. PER SPECIFICATIONS SECTIONS 36, 48 & 49.
3. ALL STRUCTURES SHALL BE BRICK SEWER STRUCTURES AS PER PLAN NO. S-3.
4. USE STANDARD MANHOLE FRAMES AND COVERS AS PER PLAN NO. S-15.
5. THE CONTRACTOR SHALL NOTIFY THE CONSTRUCTION DIVISION BY TELEPHONE MA 9-4747, EXT. 81551 AT LEAST 24 HOURS BEFORE STARTING ANY WORK UNDER THIS CONTRACT.
6. APPROVAL OF THE PLAN FOR THIS PROJECT BY THE COUNTY OF LOS ANGELES DOES NOT CONSTITUTE A REPRESENTATION AS TO THE ACCURACY OF THE LOCATION OF OR THE EXISTENCE OR NON-EXISTENCE OF ANY UNDERGROUND UTILITY PIPE, OR STRUCTURE WITHIN THE LIMITS OF THIS PROJECT.
7. ALL STATE AND LOCAL TRENCH SAFETY ORDERS WILL BE RIGIDLY ENFORCED.
8. LOS ANGELES COUNTY STANDARD SEWER SPECIFICATIONS DATED MAY 25, 1962 APPLY TO THE CONSTRUCTION OF THIS PROJECT.
9. TOPS OF SEWER STRUCTURES SHALL BE ADJUSTED TO PROP FINISHED GRADE.
10. USE FORMULA NO. 2, SEC. 54 OF SPECIFICATIONS TO COMPUTE ALLOWABLE LEAKAGE.
11. GRADES TO WHICH THIS PROJECT IS TO BE CONSTRUCTED ARE SHOWN ON THIS PLAN AND PROFILE. AT ALL POINTS BETWEEN DESIGNATED POINTS THE GRADE SHALL BE ESTABLISHED SO AS TO CONFORM TO A STRAIGHT LINE BETWEEN SAID DESIGNATED POINTS.
12. FOR LEGEND SEE PLAN NO. S-1.
13. CONSTRUCTION OF SEWER AND APPURTENANCES SHALL ALSO COMPLY WITH THE FOLLOWING COUNTY ENGINEER STANDARD PLANS: S-2, S-17, S-21, & S-30.
14. NO REVISIONS SHALL BE MADE IN THESE PLANS WITHOUT THE APPROVAL OF THE COUNTY ENGINEER.
15. ELEVATIONS ARE IN FEET ABOVE U.S.C. & G.S. SEA LEVEL DATUM OF 1929.
16. RESURFACE TRENCH IN COMPTON BLVD. IN ACCORDANCE WITH L.A. COUNTY ROAD DEPT. REQUIREMENTS.
17. REMOVAL OF SEPTIC TANK AND CESSPOOL TO BE DONE BY OTHERS.
18. REMOVAL OF TREES TO BE DONE BY OTHERS.

NO CORRECTIONS FOR THE DISPOSAL OF INDUSTRIAL WASTES SHALL BE MADE TO SEWERS SHOWN ON THESE DRAWINGS WITHOUT WRITTEN PERMISSION FROM THE CHIEF ENGINEER AND GENERAL MANAGER OF THE COUNTY SANITATION DISTRICTS.

CASH CONTRACT NO 2507
 PROFILE, ALIGNMENT, AND GRADE OF
 SANITARY SEWERS
 TO BE CONSTRUCTED IN
 COMPTON BOULEVARD
 APPROX. 120' WEST OF SAN PEDRO STREET
 P.C. 7167
 J.N. 0779.66

COUNTY OF LOS ANGELES, CALIFORNIA
 JOHN A. LAMBIE COUNTY ENGINEER
 DESIGNED BY: *Robert Johnson* RE 115220
 APPROVED *Robert Johnson* ASST. DIVISION ENGINEER
 APPROVED - JOHN D. PARKHURST
 CHIEF ENGR. CO. SAN. DIST. NO. 8
 BY: *Robert Johnson* OFFICE ENGINEER



INDEX MAP
 P.C. 7167 J.N. 0779.66
 SCALE: 1" = 300'

REFERENCES			
W.S. 26, C-3	LAYOUT: CHIEN	NOVEMBER 1964	
R.F.B. 410-25	TRACED: CHIEN	NOVEMBER 1964	
H.N. 4280	CHECKED: ESQUIER	NOVEMBER 1964	

LOS ANGELES COUNTY ROAD DEPARTMENT	
HIGHWAY	JOB NAME SAN PEDRO STREET
DIVISION	LIMITS ROSECRANS AVE TO AVALON BLVD.
SCALE HORIZ. 1" = 40'	JOB NO. 2507
VERT. 1" = 4'	SHEET 10 OF 13 SHTS.
	DWG. NO. #58562

REVISIONS	
DRAWN BY	
CHECKED BY	
REFERENCES	

26-2562-10 R.W. Soth 12-3-64
 12-3-64