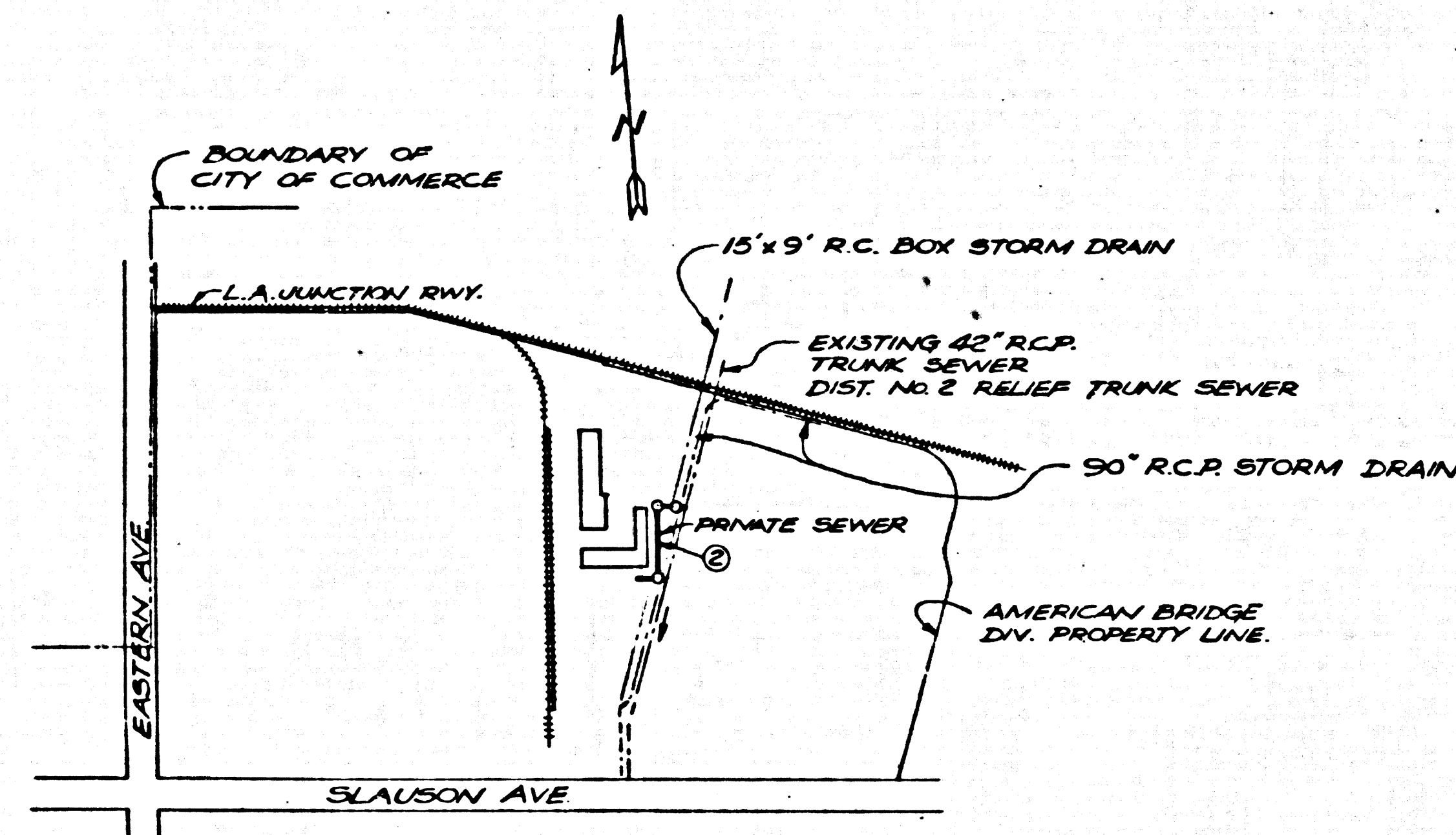


B.M. COL. C-89 ELEV. 141.50'
 A SCRIBED MARK ON NORTH FACE OF
 STEEL COLUMN NO. C-09 OF BUILDING IS
 LOCATED AT NORTHERLY CORNER OF
 A.E.D. PLANT PROPERTY NEAR THE
 NORTH-SOUTH RAILROAD SPUR TRACK.
 QUAD. 19



P.C. 7168
 INDEX MAP
 SCALE: 1" = 600'

CITY OF COMMERCE BLDG. DIST. NO. 6.01

- NOTES:
1. PROVIDE STAKES ON THE PROPERTY LINE OR PROPERTY LINES PRODUCED AT RIGHT ANGLES TO THE SEWER LINE AT THE CENTER LINE OF EACH MANHOLE.
 2. NO REPRESENTATIVE OF THE CITY ENGINEER WILL SURVEY OR LAY OUT ANY PORTION OF THE WORK.
 3. THE PRIVATE ENGINEER SHALL FURNISH THE CITY ENGINEER WITH GRADE SHEETS AND STATIONING FOR ALL HOUSE LATERALS AND Y BRANCHES AND SHALL PROVIDE STAKES FOR THEM AT THEIR PROPER LOCATIONS WITH STATIONING PLAINLY MARKED. ALL HOUSE LATERALS SHALL BE CONSTRUCTED IN A STRAIGHT ALIGNMENT AT RIGHT ANGLES FROM THE MAIN LINE SEWER EXCEPT AS SHOWN ON THE PLANS. HOUSE LATERALS FROM CHIMNEYS SHALL NOT HAVE AN ANGLE OF LESS THAN 45° WITH THE MAIN LINE SEWER. ANY CHANGE IN ALIGNMENT SHALL BE REQUESTED BY WRITING BY THE PRIVATE ENGINEER.
 4. NO REVISIONS SHALL BE MADE IN THESE PLANS WITHOUT THE APPROVAL OF THE CITY ENGINEER.
 5. THE CONTRACTOR SHALL NOTIFY THE CONSTRUCTION DIVISION BY TELEPHONE, MADISON 9-4747, EXT. 8153, AT LEAST TWENTY-FOUR HOURS BEFORE STARTING ANY WORK UNDER THIS CONTRACT.
 6. MANHOLES SHALL BE BRICK SEWER STRUCTURES PER S-104. PRECAST CONCRETE MANHOLES PER S-113 OR S-173 MAY BE USED AS AN ALTERNATE IN LOCATIONS APPROVED BY THE CITY ENGINEER.
 7. USE STANDARD MANHOLE FRAMES AND COVERS, S-117.
 8. MANHOLE TOPS IN UNIMPROVED RIGHTS OF WAY TO BE SIX INCHES ABOVE FINISHED GRADE.
 9. USE EXTRA STRENGTH PIPE, ALL PER S-1 STANDARD DEPTH EXCEPT AS NOTED.
 10. USE MECHANICAL COMPRESSION JOINTS FOR ALL V.C.P. JOINTS PER SPECS., SECS. 34 & 45, 49.
 11. WHERE EVER GROUND WATER IS ENCOUNTERED DURING THE CONSTRUCTION OF THE SEWERS, THE V.C.P. JOINTS SHALL BE OF MECHANICAL COMPRESSION JOINTS PER SPECS., SEC. 34, 45 & 49.
 12. IF A POWER POLE IS WITHIN THREE FEET OF THE SEWER, THE SEWER SHALL BE ENCASED, PER S-172, CASE III, TWO FEET ON EITHER SIDE FROM THE POINT OF INTERFERENCE.
 13. IF DURING THE COURSE OF CONSTRUCTION IT IS DETERMINED THAT THERE IS LESS THAN FOUR FEET OF COVER OVER THE TOP OF A MAIN LINE OR HOUSE LATERAL V.C.P. SEWER WHICH IS NOT INDICATED ON THE PLANS, THE PIPE SHALL BE ENCASED PER S-172, CASE III, UNLESS OTHERWISE APPROVED BY THE CITY ENGINEER.
 14. RESURFACE ALL TRENCHES WITHIN PAVED AREAS TO MEET L.A. COUNTY ROAD DEPT. OR CALIFORNIA STATE HIGHWAY REQUIREMENTS IN ACCORDANCE WITH PERMITS.
 15. FOR ALLOWABLE DAMAGE TEST USE FORMULA NO. 2, SPECS., SEC. 54.
 16. ALL STATE AND LOCAL TRENCH SAFETY ORDINANCES WILL BE RIGIDLY ENFORCED.
 17. SANDFILL MANHOLE SHALL BE PER S-1-09.

BEFORE BREAKING INTO ANY EXISTING STRUCTURE AND BEFORE FINAL ACCEPTANCE OF THIS WORK, COUNTY SANITATION DISTRICT (DU 4-1281) SHALL BE NOTIFIED IN ORDER THAT REQUIRED INSPECTION CAN BE MADE.

COLLECT CHARGES AS INDICATED
 W. G. Lee 11/24/64

PROFILE ALIGNMENT AND GRADE OF **P.C. 7168**
SANITARY SEWERS PAGE 1
 TO BE CONSTRUCTED IN

TOWER SHOP FACILITY AT U.S. STEEL

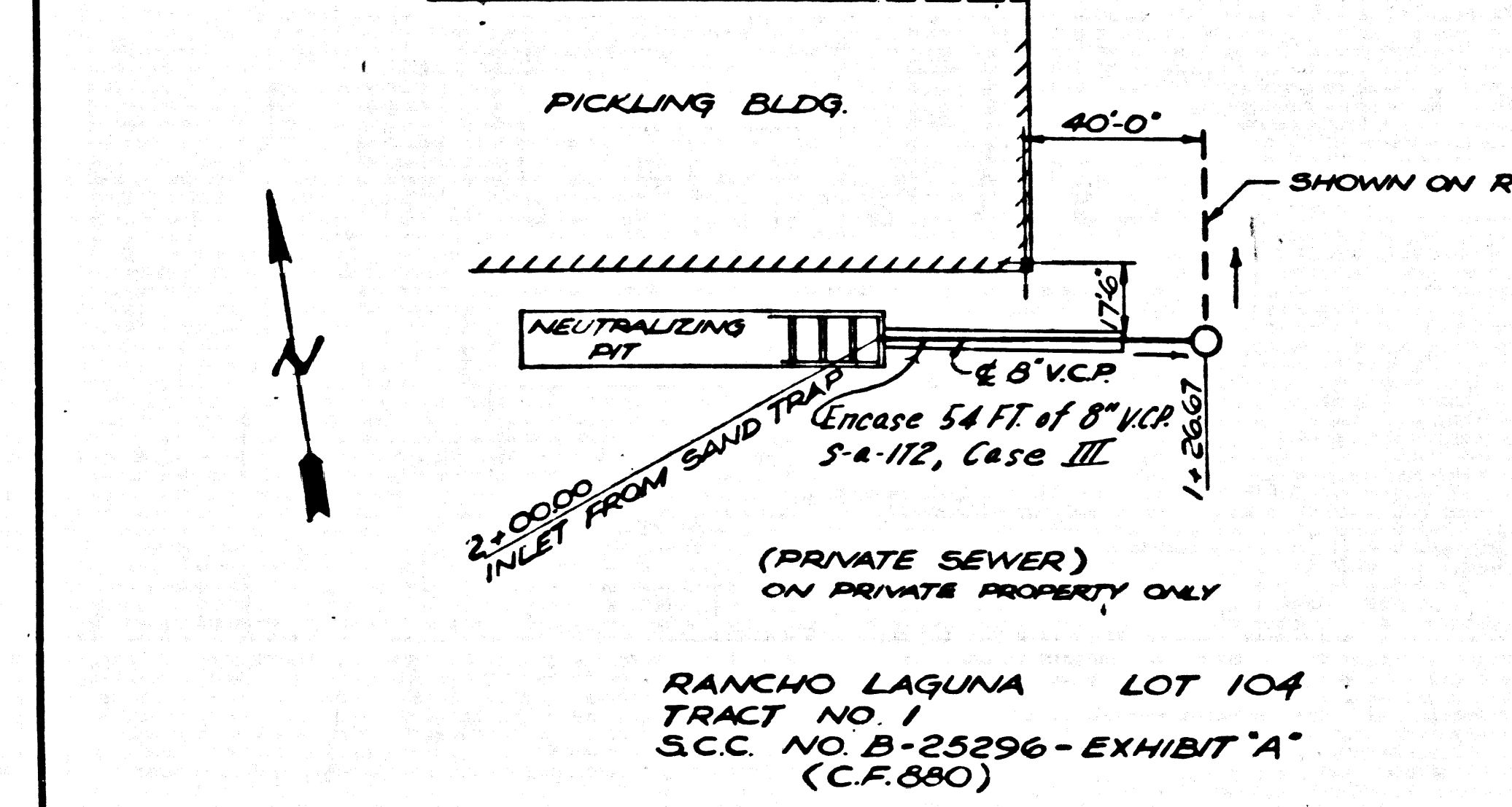
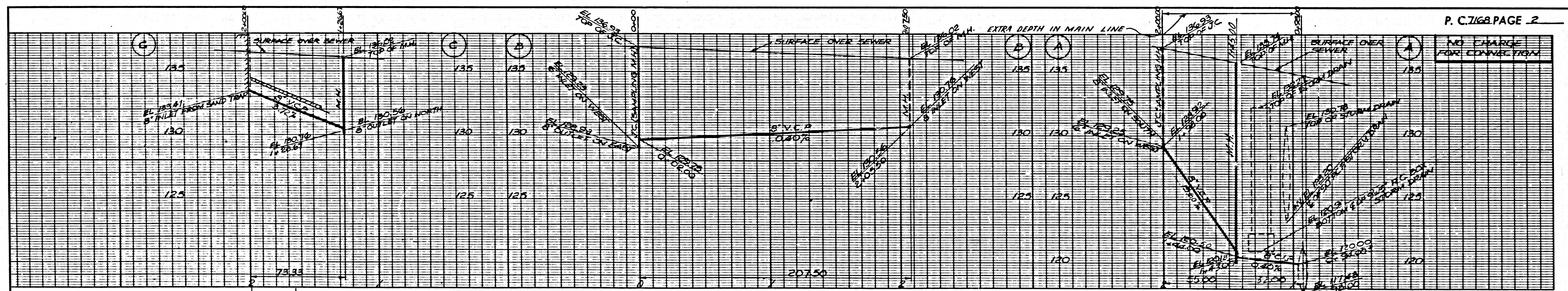
PRIVATE CONTRACT NO. 7168

W.S. 36, B-4
 1 SHEET 2 PAGES
 SCALE: VERT. 1" = 4' HORIZ. 1" = 40'
 NOVEMBER, 1964
 PREPARED IN THE OFFICES OF
AMERICAN BRIDGE DIVISION, U.S.S.
 W. H. Starn
 REG. C.E. NO. 7610
 FOR LEGEND SEE PLAN NO. S-64

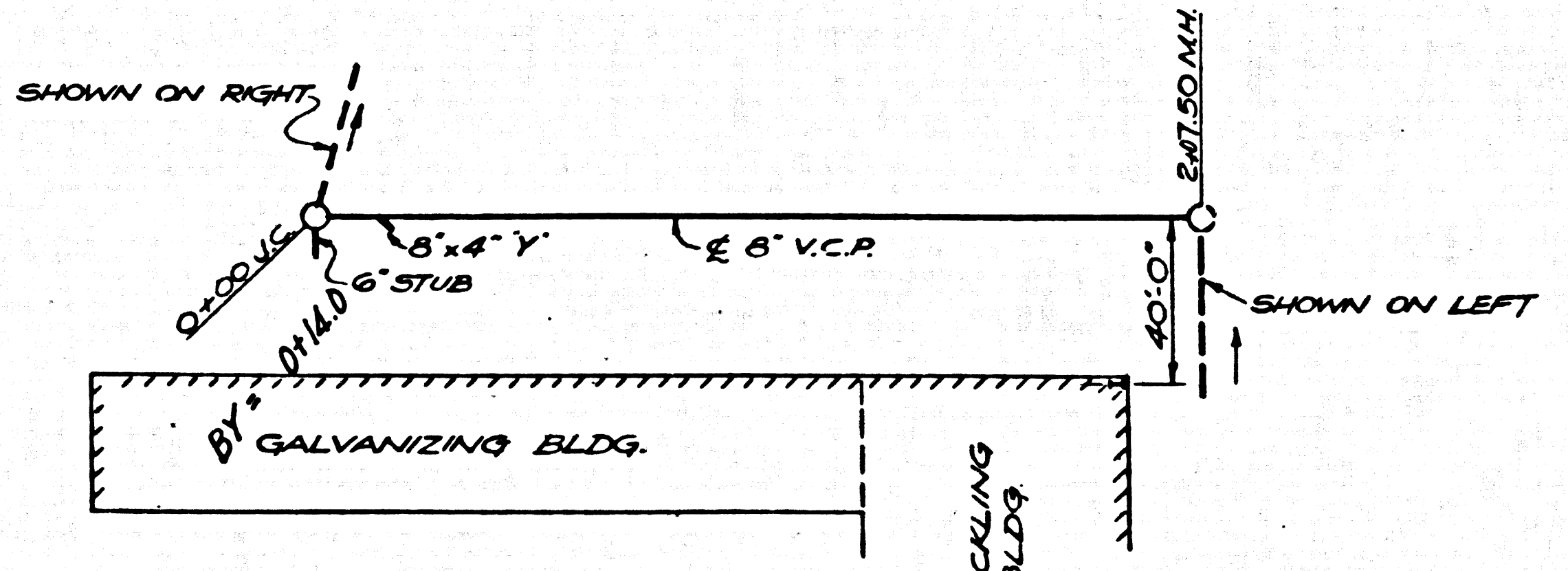
NOTE:
 GRADES TO WHICH THIS IMPROVEMENT IS TO BE CONSTRUCTED ARE SHOWN ON PLANS AND PROFILES. GRADE POINTS FOR TOP OF CURB, CENTER LINE OF STREETS, OR CENTER LINE OF ALLEYS ARE SHOWN BY CIRCLES ON PROFILES. AT ALL POINTS BETWEEN DESIGNATED POINTS THE GRADE SHALL BE ESTABLISHED SO AS TO CONFORM TO A STRAIGHT LINE DRAWN BETWEEN SAID DESIGNATED POINTS. ELEVATIONS SHOWN ABOVE ON ASSUMED LOCAL CENTER LINE.
 THIS DRAWING AND THE DATA HEREON ARE HEREBY MADE A PART OF THE SPECIFICATIONS. WORK SHALL BE CONSTRUCTED ACCORDING TO STANDARD SPECIFICATIONS BASED ON FILE IN THE OFFICE OF THE CITY ENGINEER AND SHALL BE PROSECUTED ONLY IN THE PRESENCE OF THE CITY ENGINEER. BEFORE WORK CAN BE STARTED, THE CONTRACTOR MUST OBTAIN A PERMIT TO EXCAVATE BY CITY STREETS FROM THE L.A. COUNTY ROAD DEPT., DISTRICT OFFICE NO. 6, AND MAKE A DEPOSIT WITH THE CITY OF COMMERCE, DISTRICT OFFICE NO. 6, TO COVER THE COST OF CONSTRUCTION INSPECTION AND RECORD PLANS. CITY OF COMMERCE, CALIFORNIA. APPROVAL TO COVER THE COST OF CONSTRUCTION INSPECTION AND RECORD PLANS. CITY OF COMMERCE DOES NOT CONSTITUTE A REPRESENTATION AS TO THE ACCURACY OF THE LOCATION OF OR THE EXISTENCE OR NON-EXISTENCE OF ANY UNDERGROUND UTILITY PIPE, OR STRUCTURE WITHIN THE LIMITS OF THIS PROJECT. THIS NOTE APPLIES TO ALL PAGES OF THIS PROJECT.
 IF WORK IS TO BE DONE IN A STATE HIGHWAY, A PERMIT MUST BE OBTAINED FROM THE STATE OF CALIFORNIA, DIVISION OF HIGHWAYS, 126 SOUTH SPRING STREET, LOS ANGELES, CALIFORNIA.

CITY OF COMMERCE, CALIFORNIA
 JOHN A. LAMBIE, CITY ENGINEER
 APPROVED BY *Richard E. Klein*, ASSISTANT SANITATION ENGINEER
 SUBMITTED BY *W. G. Lee*, REGIONAL ENGINEER
 CHECKED BY *J. L. ...*
 REG. C.E. NO. 7853

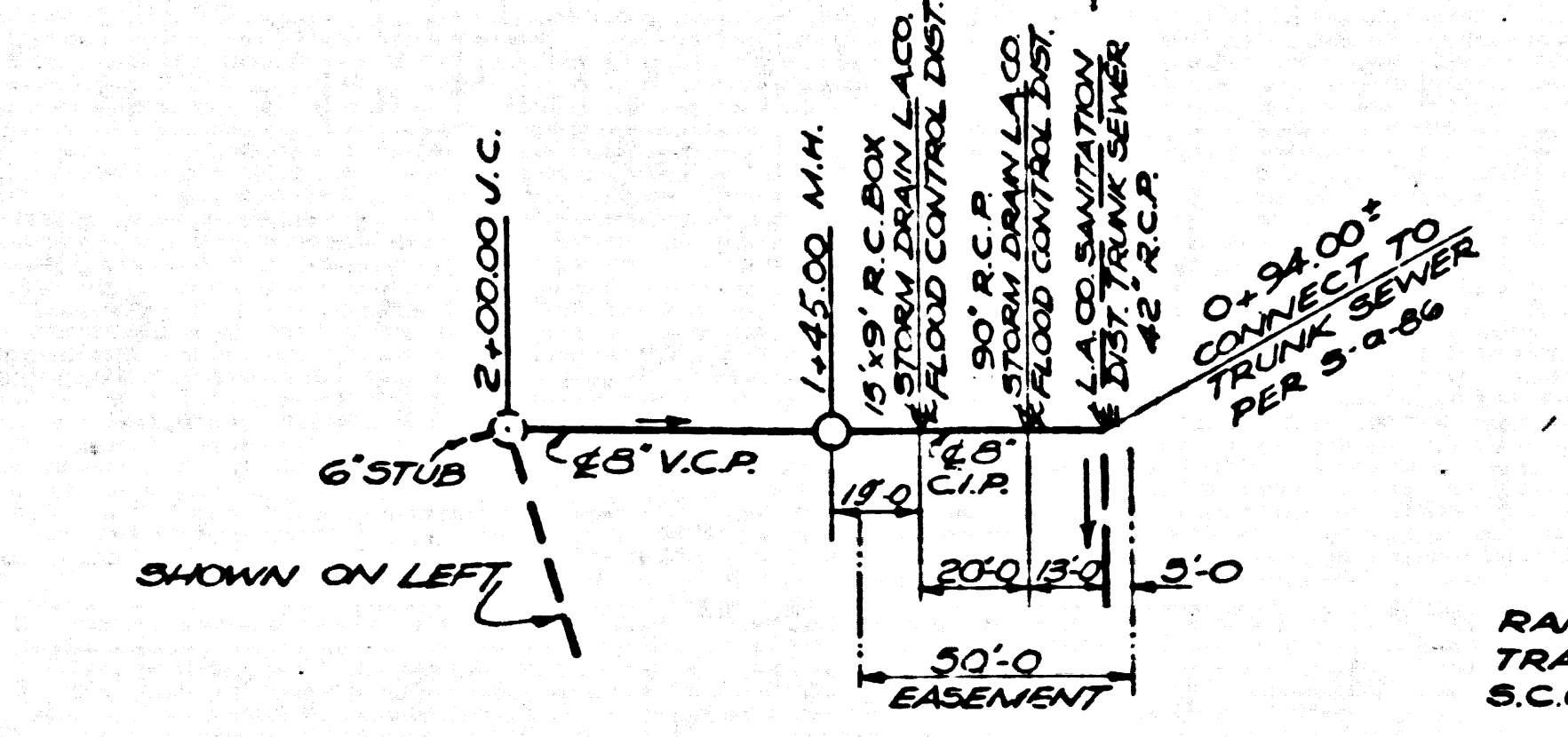
J. D. PARKHURST, CHIEF ENGINEER
 APPROVED BY *J. D. Parkhurst*
 OFFICE ENGINEER
 36464



(PRIVATE SEWER) ON PRIVATE PROPERTY ONLY
 RANCHO LAGUNA LOT 104
 TRACT NO. 1
 S.C.C. NO. B-25296-EXHIBIT "A"
 (C.F. 680)



(PRIVATE SEWER) ON PRIVATE PROPERTY ONLY
 RANCHO LAGUNA LOT 104
 TRACT NO. 1
 S.C.C. NO. B-25296-EXHIBIT "A"
 (C.F. 680)



(PRIVATE SEWER)
 ON PRIVATE PROPERTY WITH LOS ANGELES COUNTY FLOOD CONTROL DISTRICT EASEMENT PERMIT NO. 64703-A TO CROSS FLOOD CONTROL DISTRICT EASEMENT ISSUED NOV. 10, 1964 BY FLOOD CONTROL DIST.

36465
 RANCHO LAGUNA LOT 104
 TRACT NO. 1
 S.C.C. NO. B-25296-EXHIBIT "A"
 (C.F. 680)