

B.M. SY-3071-A ELEV. 33.103  
 Ft. Square head Spike Near  
 Center of Curb Return N.E.  
 Corner Lomita Blvd. & Vermont Av.  
 1" North of L. & T.  
 BASE LINE QUAD. 19.55

LOMITA BLDG. DIST. NO. 12

PROFILE ALIGNMENT AND GRADE OF  
 SANITARY SEWERS PAGE 1  
 TO BE CONSTRUCTED IN

TRACT No 30177  
 PRIVATE CONTRACT NO. 7186

W.S. 28  
 3 SHEETS, 5 PAGES  
 SCALE: VERT. 1"=4'  
 HORIZ. 1"=40'

June, 1964  
 PREPARED IN THE OFFICES OF  
 E.L. PEARSON AND ASSOCIATES  
 By: *James C. Clark*  
 REG. C. E. NO. 8782

FOR LEGEND SEE PLAN NO. S-1

19. An acceptable certification of compaction test results shall be submitted to the construction division compaction tests are to be made in accordance with A.S.T.M. Standard Method of Test - D 698 - 47.
20. All State & Local Trench Safety orders will be rigidly enforced.

1. PROVIDE STAKES ON THE PROPERTY LINE OR PROPERTY LINES PRODUCED AT RIGHT ANGLES TO THE SEWER LINE AT THE CENTER LINE OF EACH MANHOLE.
2. NO REPRESENTATIVE OF THE COUNTY ENGINEER WILL SURVEY OR LAY OUT ANY PORTION OF THE WORK.
3. THE PRIVATE ENGINEER SHALL FURNISH THE COUNTY ENGINEER WITH GRADE SHEETS AND STATIONING FOR ALL HOUSE LATERALS AND Y BRANCHES AND SHALL PROVIDE STAKES FOR THEM AT THEIR PROPER LOCATIONS WITH STATIONING PLAINLY MARKED. ALL HOUSE LATERALS SHALL BE CONSTRUCTED IN A STRAIGHT ALIGNMENT AT RIGHT ANGLES FROM THE MAIN LINE SEWER EXCEPT AS SHOWN ON THE PLANS. HOUSE LATERALS FROM CHIMNEYS SHALL NOT HAVE AN ANGLE OF LESS THAN 45° WITH THE MAIN LINE SEWER. ANY CHANGE IN ALIGNMENT SHALL BE REQUESTED IN WRITING BY THE PRIVATE ENGINEER.
4. THE PRIVATE ENGINEER SHALL FURNISH THE HOUSE LATERAL DEPTH AT THE PROPERTY LINE BELOW THE TOP OF CURB ELEVATION FOR EACH HOUSE LATERAL ON THE GRADE SHEET.
5. NO REVISIONS SHALL BE MADE IN THESE PLANS WITHOUT THE APPROVAL OF THE COUNTY ENGINEER.
6. THE CONTRACTOR SHALL NOTIFY THE CONSTRUCTION DIVISION BY TELEPHONE, MADISON 9-4747, EXT. 8158, AT LEAST TWENTY-FOUR HOURS BEFORE STARTING ANY WORK UNDER THIS CONTRACT.
7. MANHOLES SHALL BE BRICK SEWER STRUCTURES PER S-3 PRECAST CONCRETE MANHOLES PER S-5 OR S-6 MAY BE USED AS AN ALTERNATE IN LOCATIONS APPROVED BY THE COUNTY ENGINEER.
8. USE STANDARD MANHOLE FRAMES AND COVERS, S-15, EXCEPT AS NOTED.
9. MANHOLE TOPS IN UNIMPROVED RIGHTS-OF-WAY TO BE SIX INCHES ABOVE FINISHED GRADE.
10. USE EXTRA STRENGTH PIPE. ALL PIPE IS STANDARD DEPTH EXCEPT AS NOTED.
11. USE MECHANICAL COMPRESSION JOINTS FOR ALL V.C.P. JOINTS PER SPECS., SECS. 34 & 44, & 49.
12. WHERE FIVE GALV. WATER IS ENCOUNTERED DURING THE CONSTRUCTION OF THE SEWERS, THE V.C.P. JOINTS SHALL BE OF JOINT COMPOUND PER SPECS., SECS. 33 & 44, OR MECHANICAL COMPRESSION JOINTS PER SPECS., SEC. 34.
13. IF A POWER POLE IS WITHIN THREE FEET OF THE SEWER, THE SEWER SHALL BE ENCASED, PER S-23 TWO FEET ON EITHER SIDE FROM THE POINT OF INTERFERENCE.
14. IF DURING THE COURSE OF CONSTRUCTION IT IS DETERMINED THAT THERE IS LESS THAN FOUR FEET OF COVER OVER THE TOP OF A MAIN LINE OR HOUSE LATERAL V.C.P. SEWER WHICH IS NOT INDICATED ON THE PLANS, THE PIPE SHALL BE ENCASED PER S-23 UNLESS OTHERWISE APPROVED BY THE COUNTY ENGINEER.
15. HOUSE LATERALS TO BE CONSTRUCTED WITH INVERTS AT PROPERTY LINE ... 6" ... FEET BELOW CURB GRADE EXCEPT AS NOTED.
16. RESURFACE ALL TRENCHES WITHIN PAVED AREAS TO MEET L.A. COUNTY ROAD DEPT. OR CALIFORNIA STATE HIGHWAY REQUIREMENTS IN ACCORDANCE WITH PERMITS.
17. FOR ALLOWABLE LEAKAGE TEST USE FORMULA NO. 2, SPECS., SEC. 54.
18. The existence and location of any underground utility pipes, conduits or structures shown on these plans are obtained by a search of the available records. To the best of our knowledge there are no existing utilities except as shown on these plans. The contractor is required to take such precautionary measures to protect the utility lines shown and any other lines not on record or not shown on these drawings. The contractor further assumes all liability and responsibility for the utility pipes, conduits, lines or structures shown or not shown on these drawings.

NOTE:  
 GRADES TO WHICH THIS IMPROVEMENT IS TO BE CONSTRUCTED ARE SHOWN ON PLANS AND PROFILES. GRADE POINTS FOR TOP OF CURBS, CENTER LINE OF STREETS, OR CENTER LINE OF ALLEYS ARE SHOWN BY CIRCLES ON PROFILES. AT ALL POINTS BETWEEN DESIGNATED POINTS THE GRADE SHALL BE ESTABLISHED SO AS TO CONFORM TO A STRAIGHT LINE DRAWN BETWEEN SAID DESIGNATED POINTS. ELEVATIONS ARE IN FEET ABOVE U.S.C. & G.S. SEA LEVEL DATUM OF 1929. REVISIONS ARE IN RED. THIS DRAWING AND THE DATA HERECIN ARE HEREBY MADE A PART OF THE SPECIFICATIONS. WORK SHALL BE CONSTRUCTED ACCORDING TO STANDARD SPECIFICATIONS DATED 2-5-1962, ON FILE IN THE OFFICE OF THE COUNTY ENGINEER AND SHALL BE PROSECUTED ONLY IN THE PRESENCE OF THE COUNTY ENGINEER. BEFORE WORK CAN BE STARTED, THE CONTRACTOR MUST OBTAIN A PERMIT TO EXCAVATE IN COUNTY STREETS FROM THE L.A. COUNTY ROAD DEPT., DISTRICT OFFICE NO. 2, AND PAY A FEE TO THE COUNTY ENGINEER, ROOM 200, COUNTY ENGINEER'S BUILDING, 108 WEST SECOND STREET OR, LOS ANGELES - CENTRAL VALLEY REGIONAL OFFICE, SUFFICIENT TO COVER THE COST OF APPROVAL OF THIS PLAN BY THE COUNTY OF LOS ANGELES DOES NOT CONSTITUTE A REPRESENTATION AS TO THE ACCURACY OF THE LOCATION OF OR THE EXISTENCE OR NON-EXISTENCE OF ANY UNDERGROUND UTILITY PIPE, OR STRUCTURE WITHIN THE LIMITS OF THIS PROJECT. THIS NOTE APPLIES TO ALL PAGES. IF WORK IS TO BE DONE ON A STATE HIGHWAY, A PERMIT MUST BE OBTAINED FROM THE STATE OF CALIFORNIA, DIVISION OF HIGHWAYS, 126 SOUTH SPRING STREET, LOS ANGELES, CALIFORNIA.

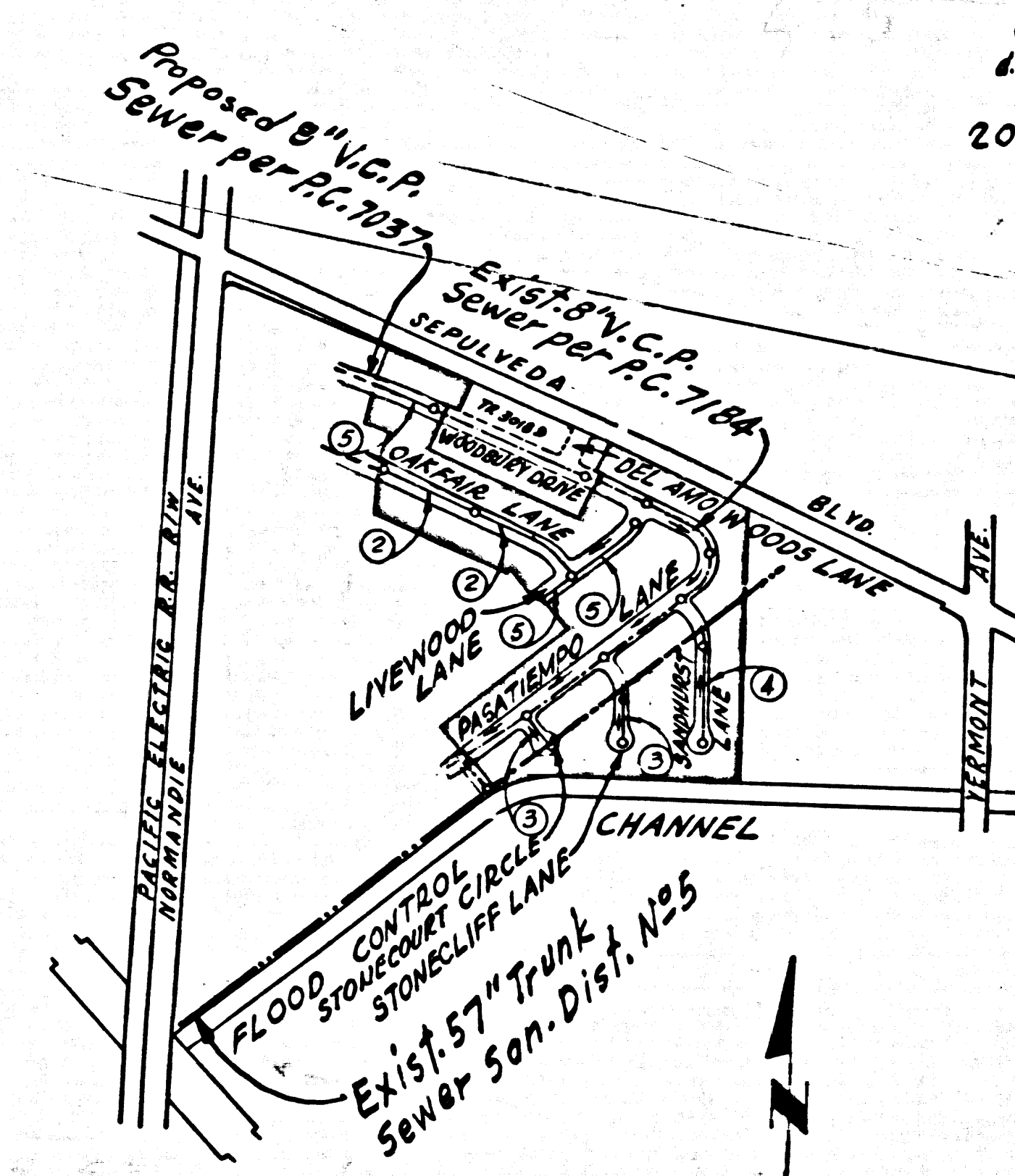
COUNTY OF LOS ANGELES, CALIFORNIA  
 JOHN A. LAMBIE, COUNTY ENGINEER  
 J. D. PARKHURST, CHIEF ENGINEER  
 CO. SAN. DIST. NO. 8  
 APPROVED BY: *Richard E. K...*  
 ASSISTANT SANITATION ENGINEER  
 SUBMITTED BY: *James C. Clark*  
 REGIONAL ENGINEER  
 CHECKED BY: *Samuel H. Valdez*  
 REG. C. E. NO. 10653

J.N. 0364.55

REVISION DATE: JUNE 17, 1965  
 REVISED GRADE ON STONECOURT CIRCLE, PAGES  
 APPROVED BY: *Samuel H. Valdez*  
 R.C.E. 10653

REVISION DATE: APRIL 13, 1965  
 OMIT M.H. TYPE "B" ON STONECLIFF LANE, PAGE 3A  
 AND CONSTRUCT M.H. TYPE "B" ON STONECOURT  
 CIRCLE, PAGE 3B.  
 APPROVED BY: *Samuel H. Valdez*  
 R.C.E. 10653

APPROVED BY: *J. D. Parkhurst*  
 CO. SAN. DIST. NO. 8 OFFICE ENGINEER



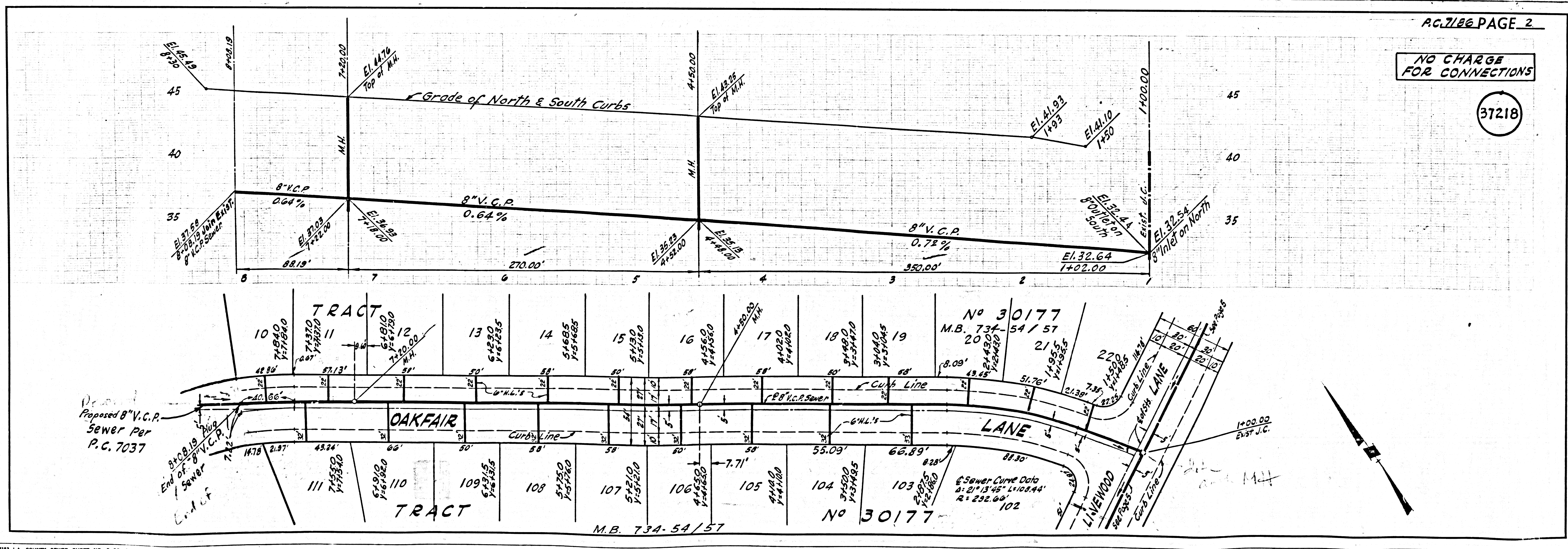
15508 NO PERMITS PRIOR TO  
 COMPLETION OF SEWERS UNDER  
 P.C. 7037 AND P.C. 7184

Lot 5  
 Lots 23 to 37 inclusive  
 " 54 to 57 "  
 " 76 to 93 "  
 " 67 to 70 " and  
 " 73 to 75 "  
 are served from Tract  
 N2 30189 P.C. 7184

COLLECT CHARGES  
 AS INDICATED  
*John H. ... 1-25-65*

BEFORE BREAKING INTO ANY EXISTING STRUCTURE  
 AND BEFORE FINAL ACCEPTANCE OF THIS WORK,  
 COUNTY SANITATION DISTRICT (DU 4-1283) SHALL  
 BE NOTIFIED IN ORDER THAT REQUIRED INSPEC-  
 TION CAN BE MADE.

NO CONNECTIONS FOR THE DISPOSAL OF  
 INDUSTRIAL WASTES SHALL BE MADE TO  
 SEWERS SHOWN ON THESE DRAWINGS  
 WITHOUT WRITTEN PERMISSION FROM THE  
 CHIEF ENGINEER AND GENERAL MANAGER  
 OF THE COUNTY SANITATION DISTRICTS.



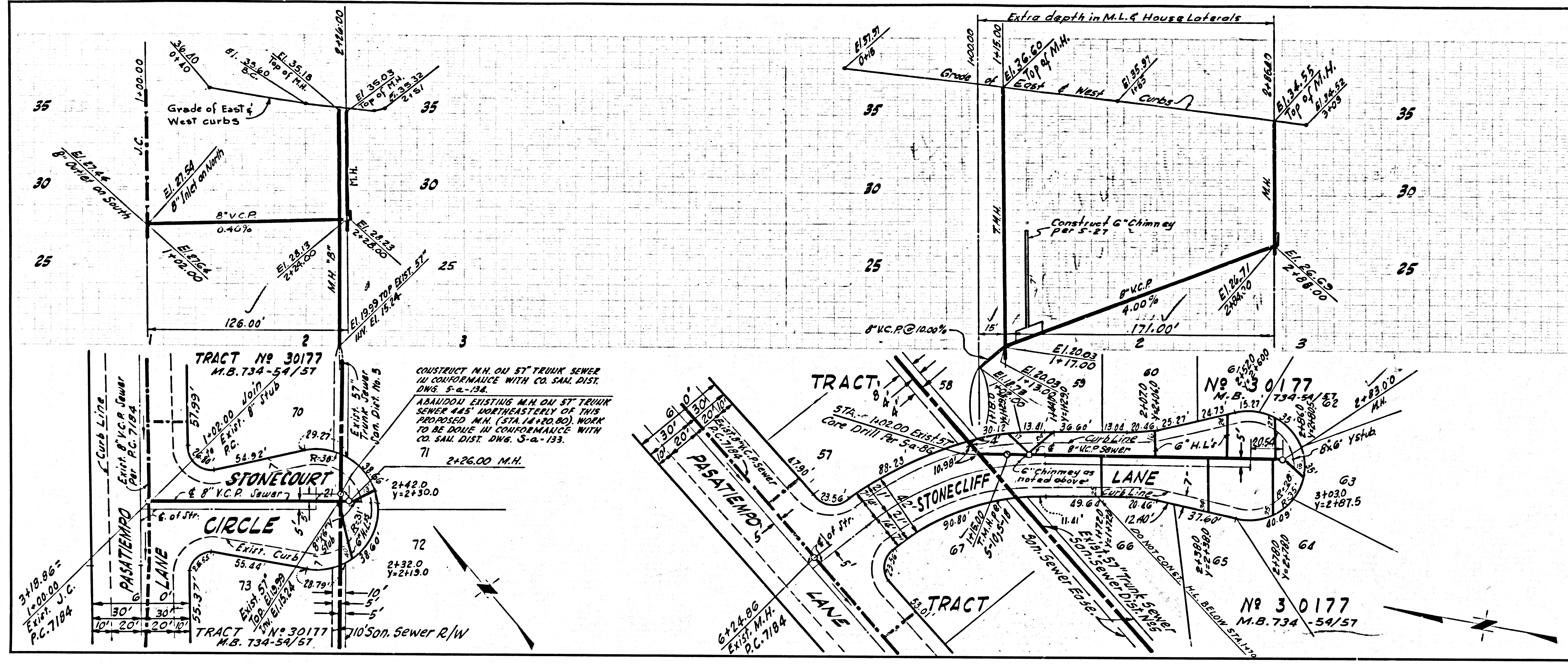
P.C. 7186 PAGE 2

NO CHARGE  
 FOR CONNECTIONS

37218

NO CHARGE FOR CONNECTIONS

37219



NO CHARGE FOR CONNECTIONS

37220

