

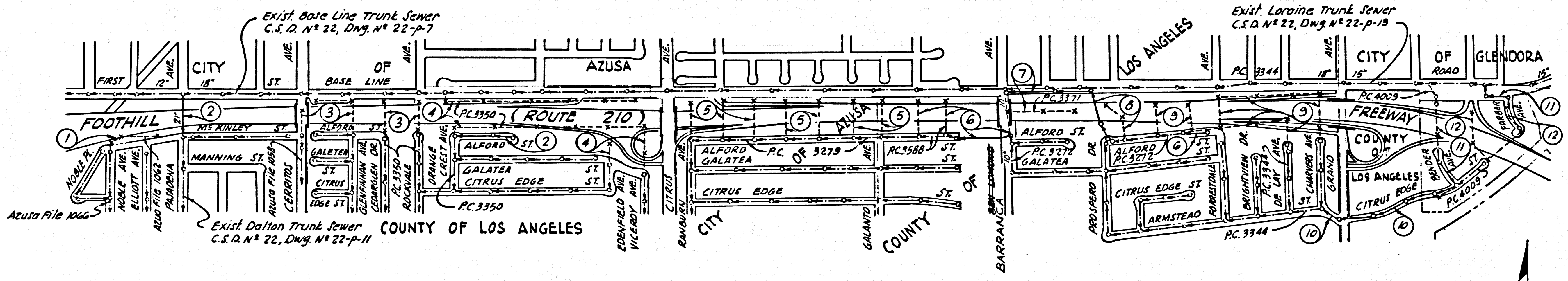
DIST.	COUNTY	ROUTE	SECTION	SHEET NO.	TOTAL SHEETS
7	CALIF.				

- NOTES:**
1. ALL STRUCTURES SHALL BE BRICK SEWER STRUCTURES PER STANDARD N° S-3, EXCEPT AS NOTED.
 2. USE STANDARD MANHOLE FRAMES AND COVERS PER STANDARD N° S-15, EXCEPT AS NOTED.
 3. THE CONTRACTOR SHALL MAINTAIN SEWER SERVICE AT ALL TIMES DURING CONSTRUCTION.
 4. AT LEAST 48 HOURS BEFORE STARTING WORK ON THIS PROJECT, THE RESIDENT ENGINEER SHALL NOTIFY:
 - THE CITY ENGINEER OF AZUSA, 334-5125.
 - THE CITY ENGINEER OF GLENDORA, 335-4071.
 - THE COUNTY ENGINEER, 629-4747, EXT. 81552.
 - THE COUNTY SANITATION DISTRICT, 384-1231.
 5. NO CONNECTIONS FOR THE DISPOSAL OF INDUSTRIAL WASTES SHALL BE MADE TO SEWERS SHOWN ON THESE DRAWINGS WITHOUT WRITTEN PERMISSION FROM THE CHIEF ENGINEER AND GENERAL MANAGER OF THE COUNTY SANITATION DISTRICT.
 6. THE CONTRACTOR SHALL DELIVER 17 SALVAGED MANHOLE FRAMES AND COVERS TO THE COUNTY SEWER MAINTENANCE YARD, 2849 S. MYRTLE AVENUE, IRVINDALE, CALIFORNIA.

PLAN AND PROFILE OF
SANITARY SEWERS
 CONSTRUCTED UNDER
P.C. 7198

SHEET 1 OF 12 SHEETS
 W.S. 47448 JULY, 1966
 SCALES: HORIZ.: 1"=50' VERT.: 1"=5'
 COUNTY OF LOS ANGELES, CALIFORNIA

APPROVED JOHN A. LAMBIE, COUNTY ENGINEER
 BY: *Richard E. Kern*
 DIVISION ENGINEER
 SUBMITTED BY: *Richard J. G. ...*
 R.E.N. 14390
 APPROVED JOHN D. PARKHURST, CHIEF ENGINEER
 COUNTY SANITATION DISTRICT #22
 BY: *J. Posthumus*
 OFFICE ENGINEER
 CITY OF AZUSA, CALIFORNIA
 APPROVED ROBERT K. SANDNICK, CITY ENGINEER
 BY: *Robert K. Sandnick*
 CITY ENGINEER
 CITY OF GLENDORA, CALIFORNIA
 APPROVED KARL F. KOHLHOFF, CITY ENGINEER
 BY: *Karl F. Kohloff* 10-13-66
 CITY ENGINEER RE 13,166

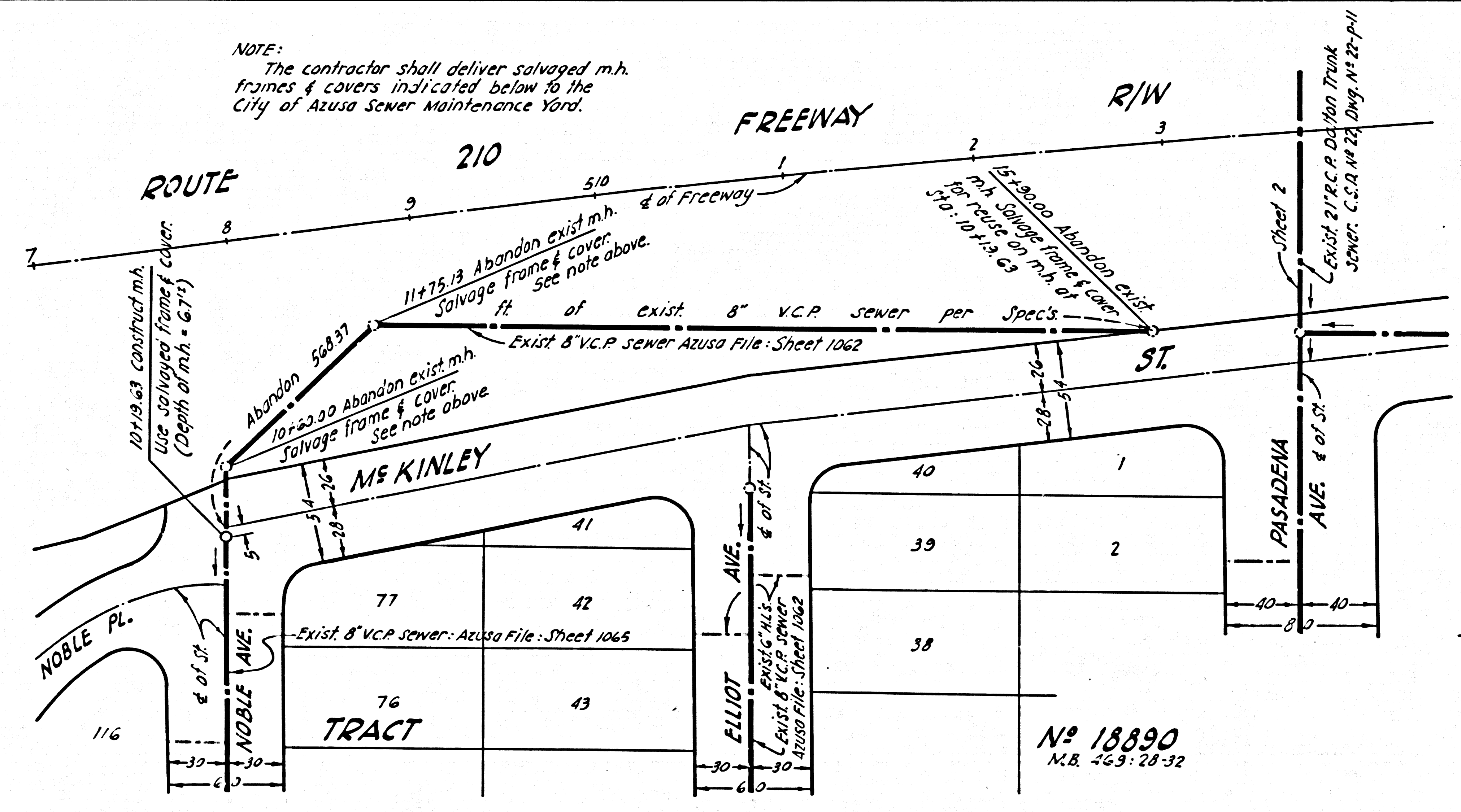


INDEX MAP
 ROUTE 210 FREEWAY
 P.C. 7198
 W.S. 47448 Scale 1"=600' R. 50A 451
LEGEND
 Sewers to be abandoned
 Sewers to be constructed
 Existing sewers
 Sheet numbers

DESIGNED BY	G. ESQUER, I. HONDA, & D. BURKHART
CHECKED BY	W. MISKELL

41356

NOTE:
 The contractor shall deliver salvaged m.h. frames & covers indicated below to the City of Azusa Sewer Maintenance Yard.



N° 18890
 M.B. 453:28-32

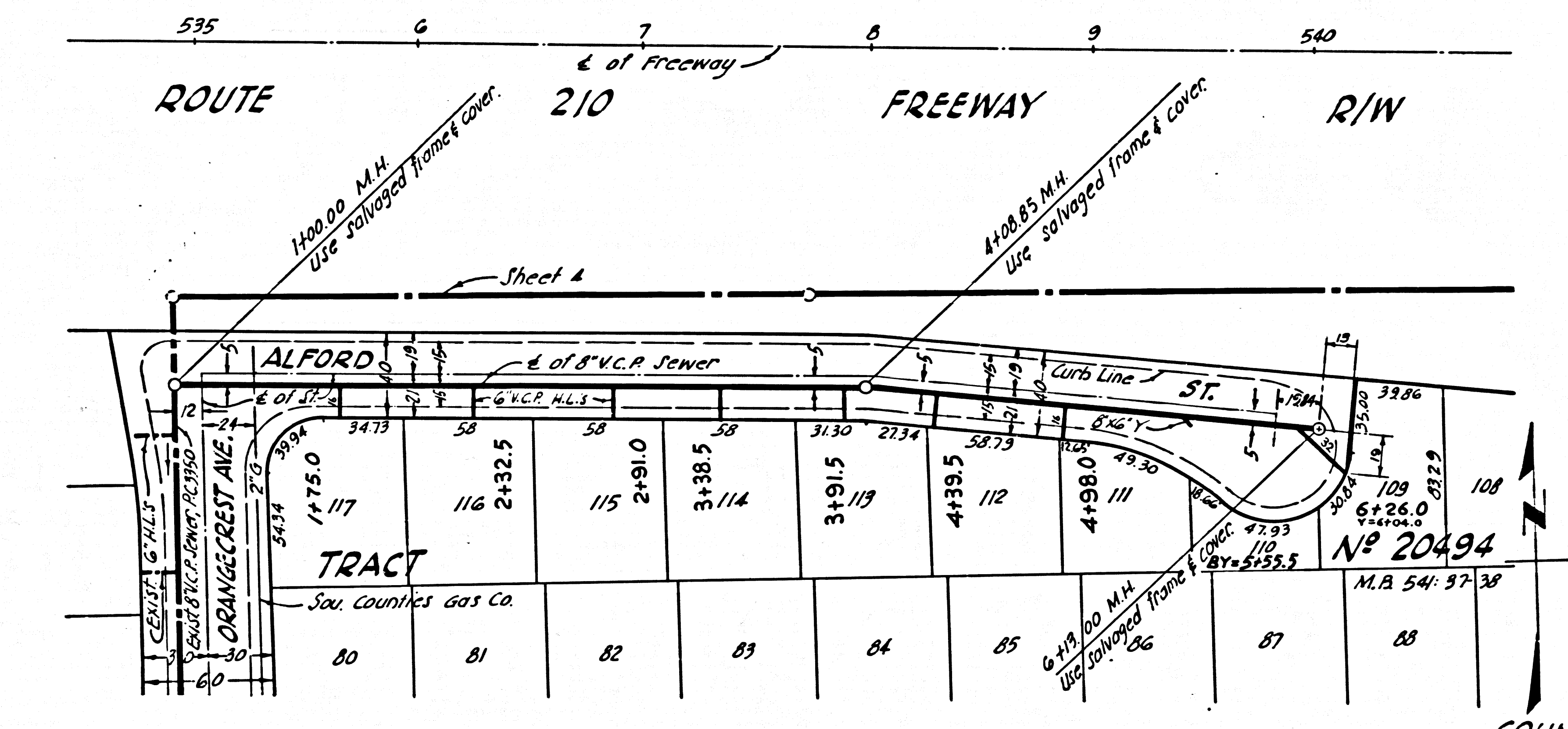
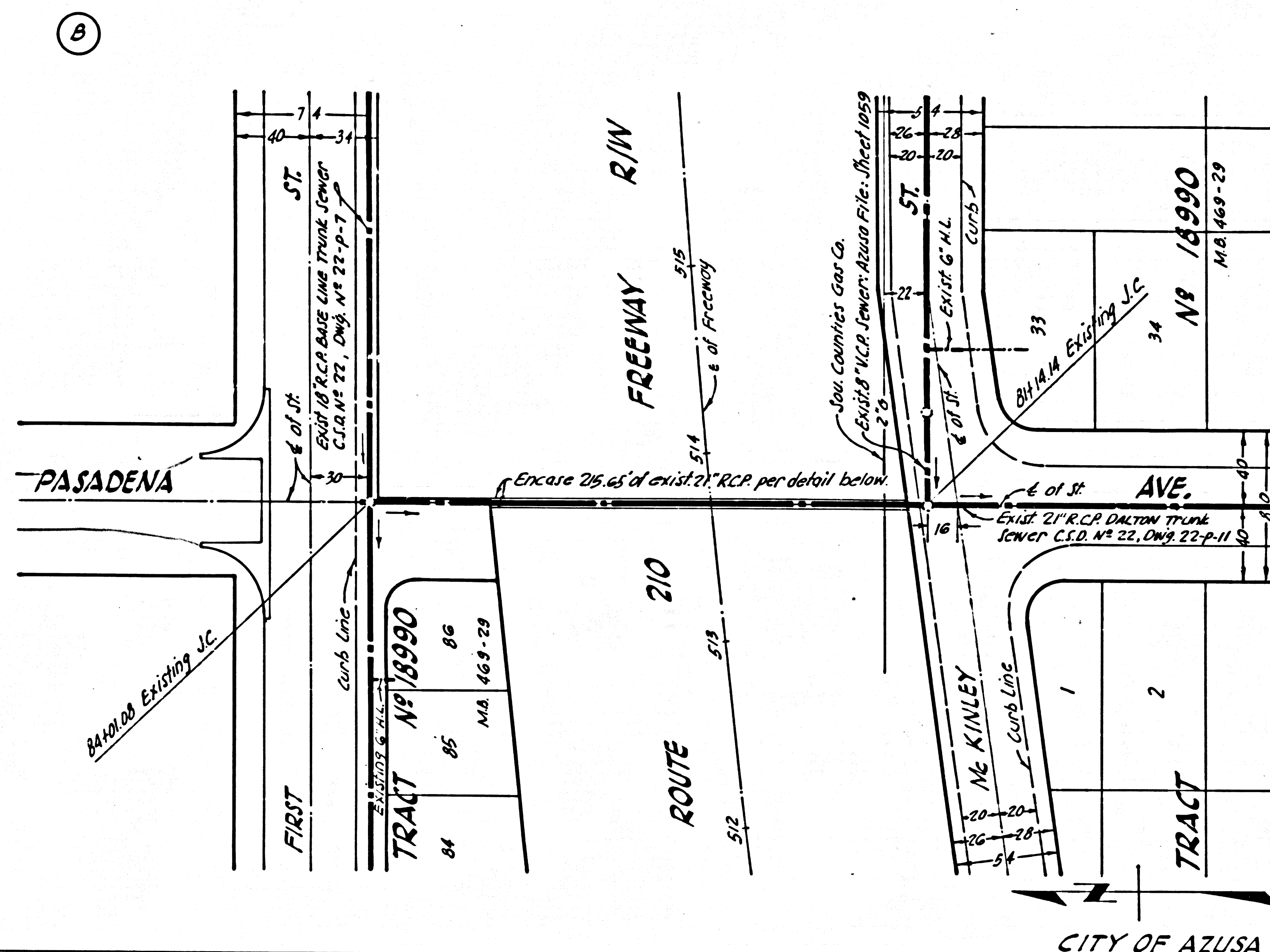
CITY OF AZUSA

PROJECT ENGINEER	DATE	DESIGN ENGINEER	DATE	APPROVAL RECOMMENDED BY	DATE

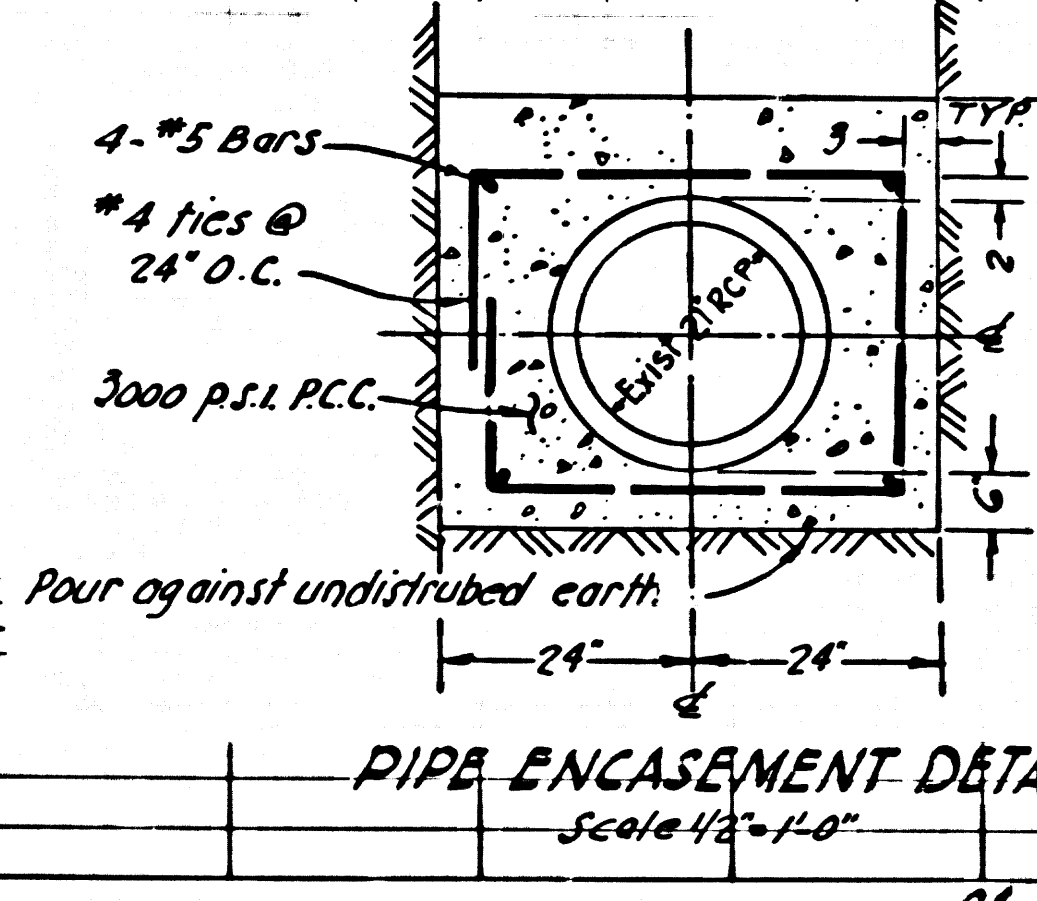
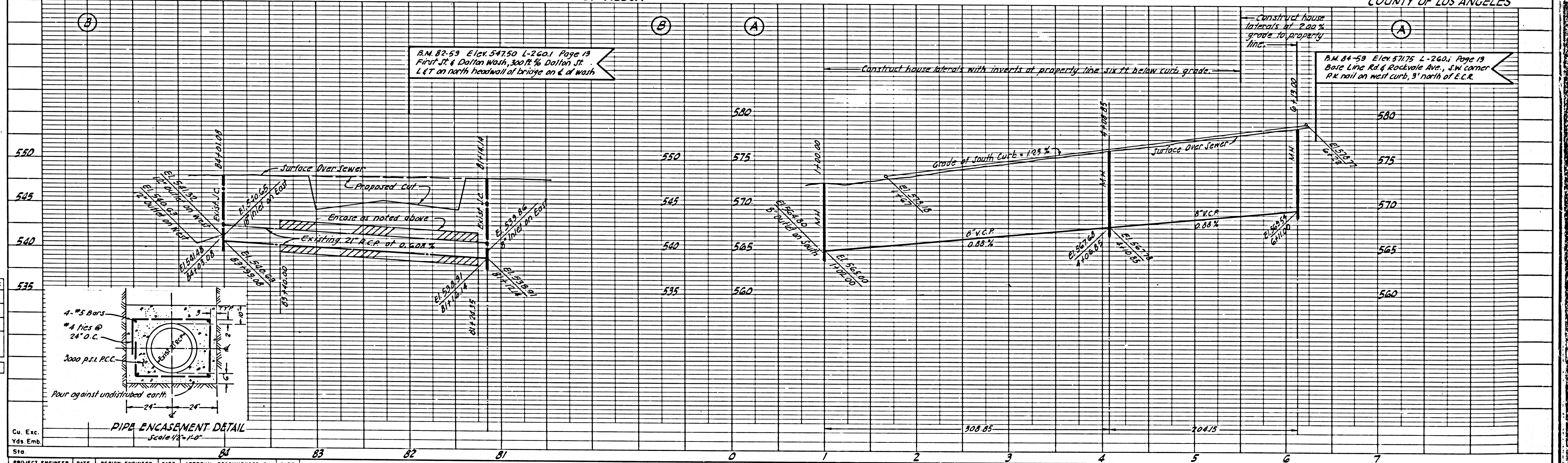
BPR	STATE	FEDERAL PROJECT No.	FISCAL YEAR	SHEET No.	TOTAL SHEETS
VII	CALIF.				
DIST	COUNTY	NO. 12	POST MILES - TOTAL PROJECT	SHEET No.	TOTAL SHEETS

DEPUTY DISTRICT ENGINEER
 APPROVER: _____

P.C. 7198
 SHEET 2 OF 12 SHEETS



41357



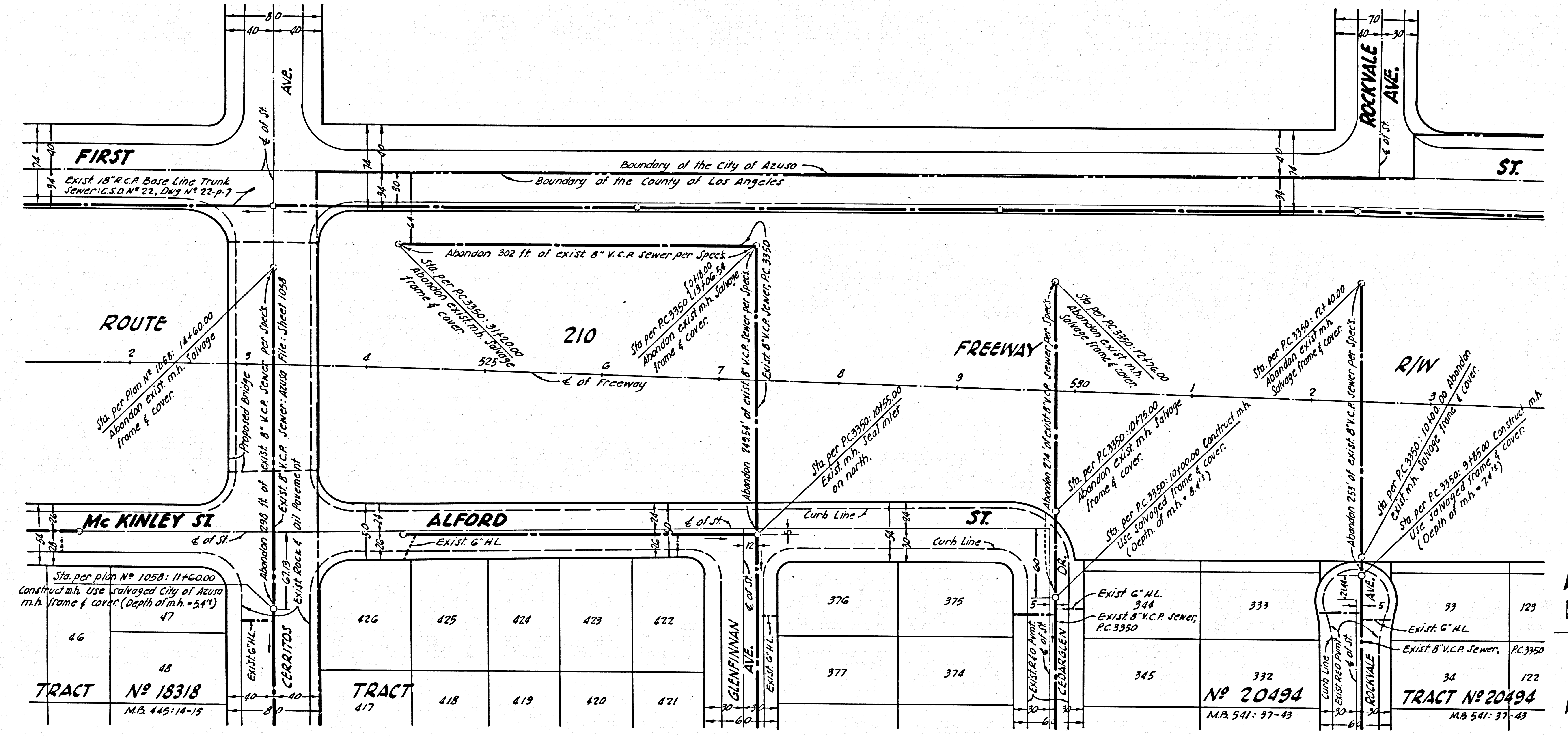
DESIGNED	DATE
TRACED	
CHECKED	
SUPERVISED BY	
DATE	

PROJECT ENGINEER	DATE	DESIGN ENGINEER	DATE	APPROVAL	RECOMMENDED BY	DATE

DIST.	COUNTY	ROUTE	SECTION	SHEET NO.	TOTAL SHEETS

P.C. 7198
SHEET 3 OF 12 SHEETS

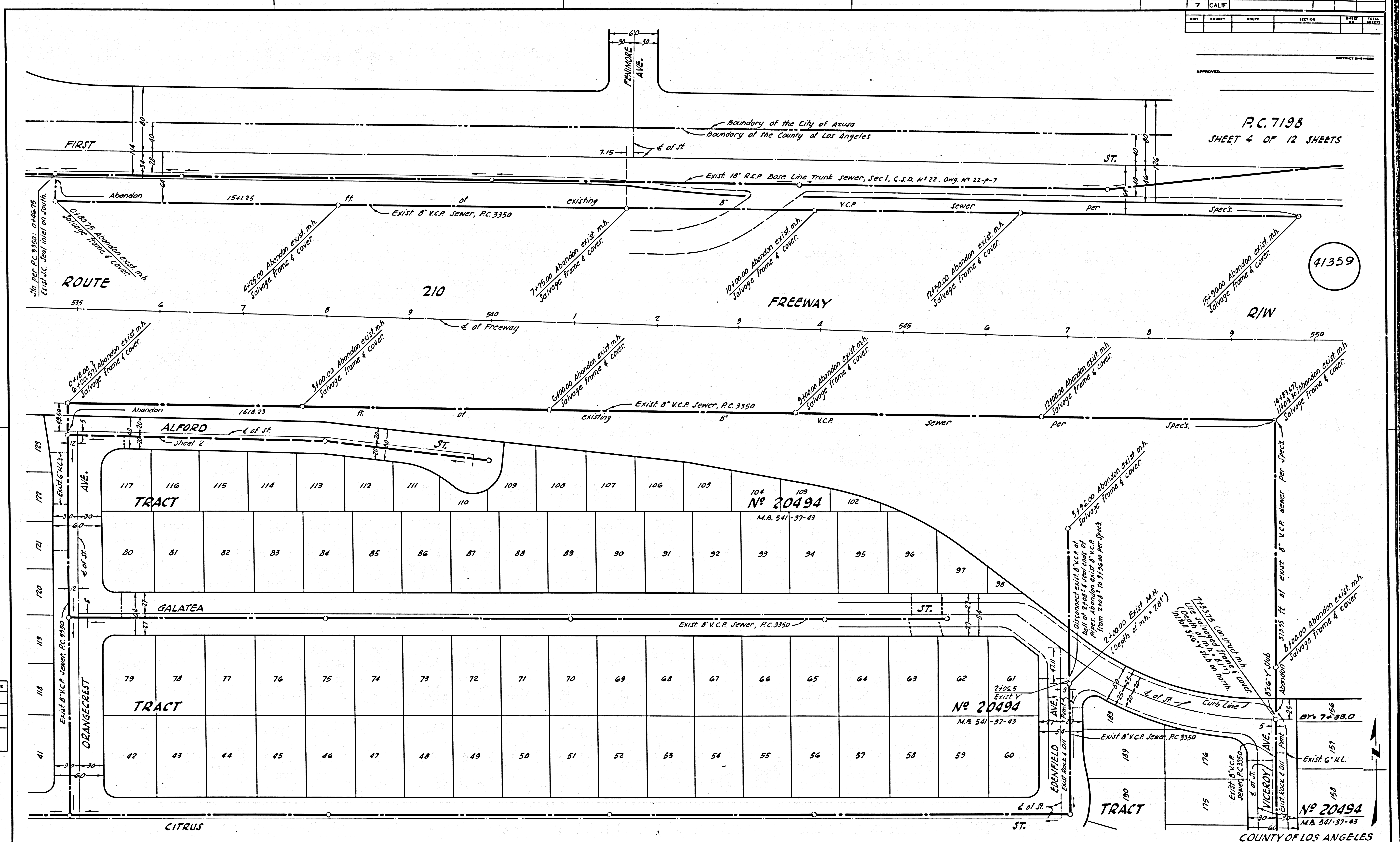
41358



STATE	FEDERAL PROJECT NO.	SHEET NO.	TOTAL SHEETS
CALIF.		4	12
COUNTY	ROUTE	SECTION	TOTAL SHEETS

P.C. 7198
SHEET 4 OF 12 SHEETS

41359



DESIGN DEPT.	INITIAL	DATE
Designed		
Traced		
Checked		
Supervised by		

Project Engineer	Date	Design Engineer	Date	Approval Recommended By	Date

COUNTY OF LOS ANGELES

Form No. 5-B.A.
REV. 1-20-50

S.P. No.	STATE	FEDERAL PROJECT No.	FISCAL YEAR	SHEET No.	TOTAL SHEETS
	CALIF.				

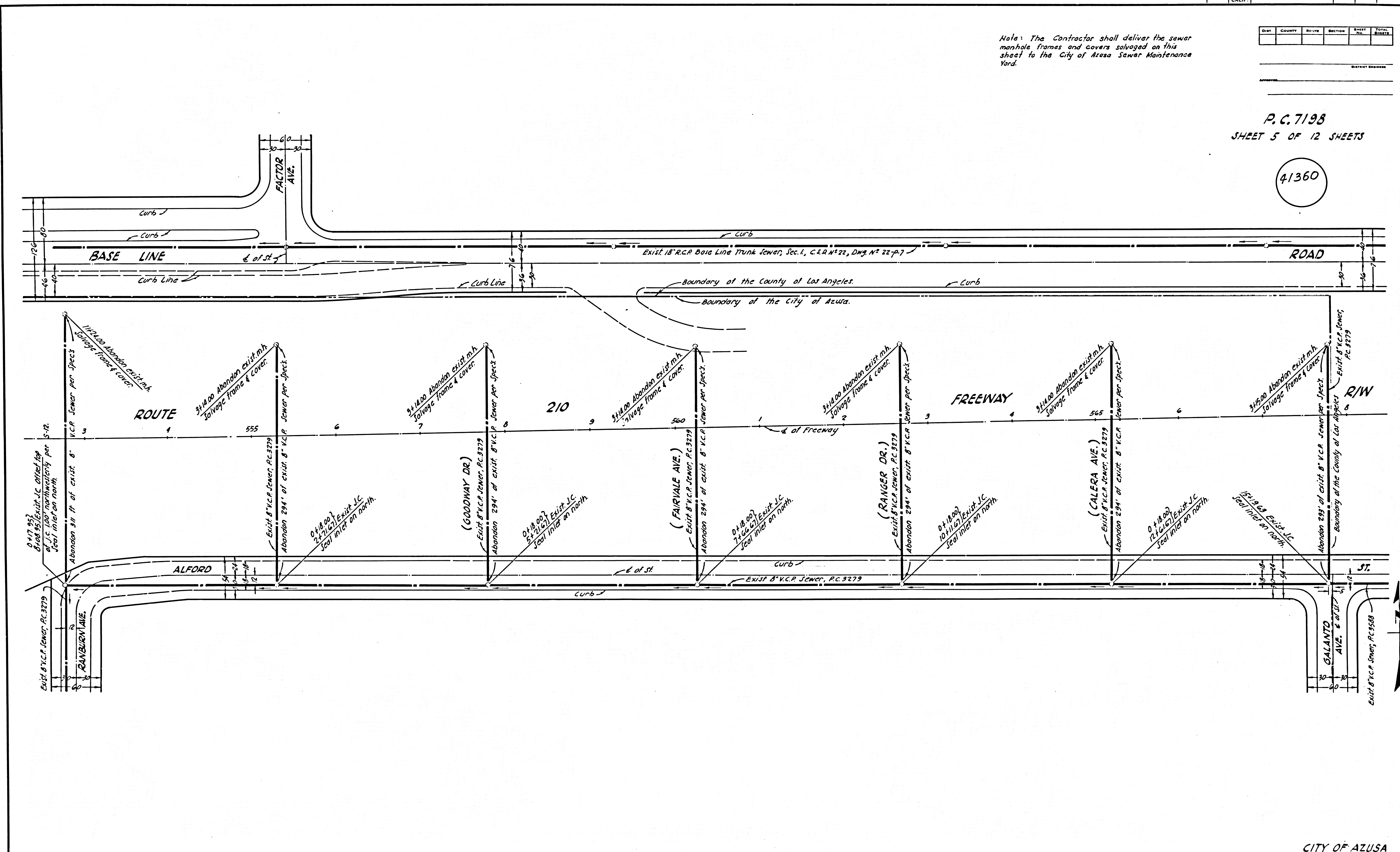
Note: The Contractor shall deliver the sewer manhole frames and covers salvaged on this sheet to the City of Azusa Sewer Maintenance Yard.

DIST.	COUNTY	ROUTE	SECTION	SHEET No.	TOTAL SHEETS

DESIGN ENGINEER

P.C. 7198
SHEET 5 OF 12 SHEETS

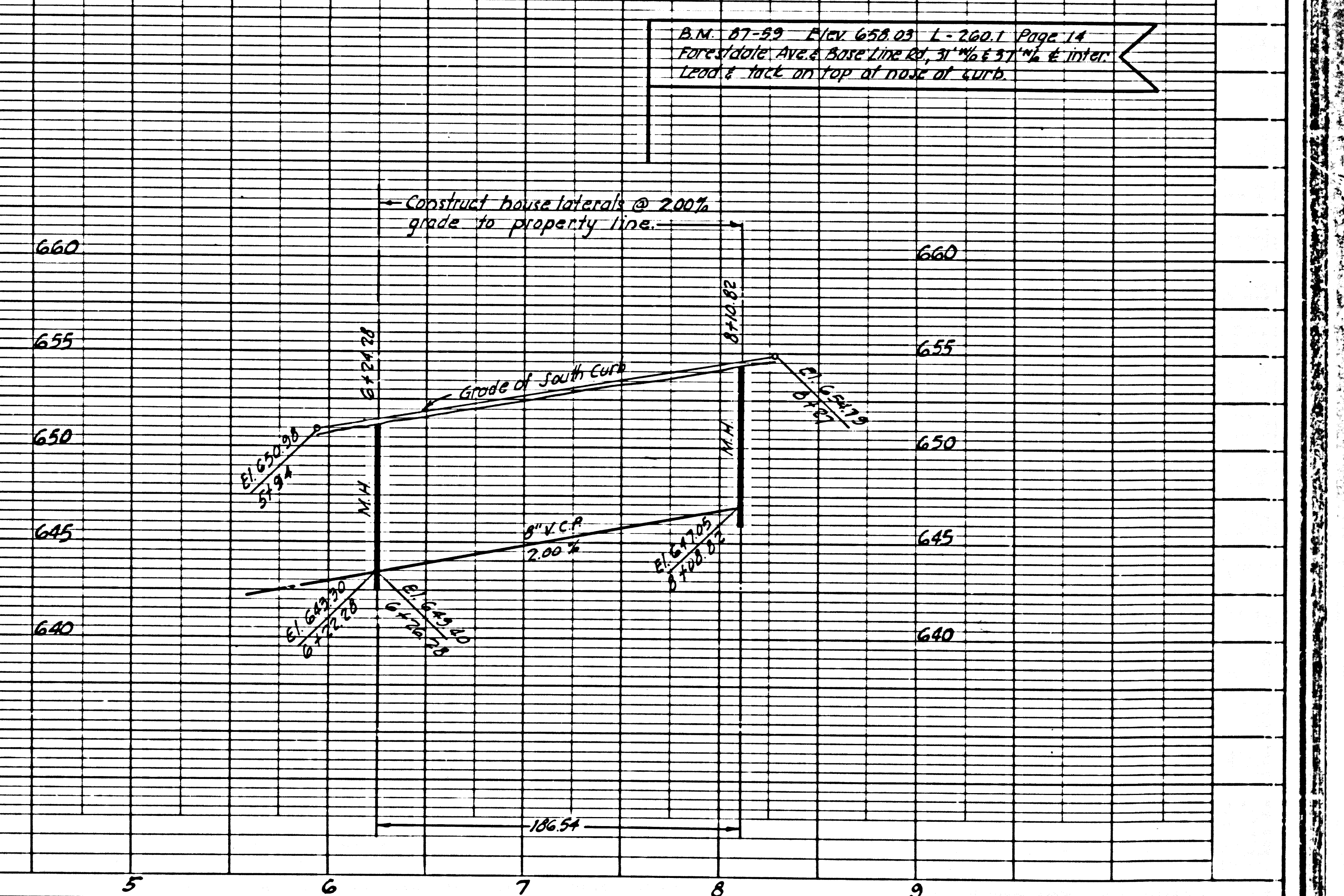
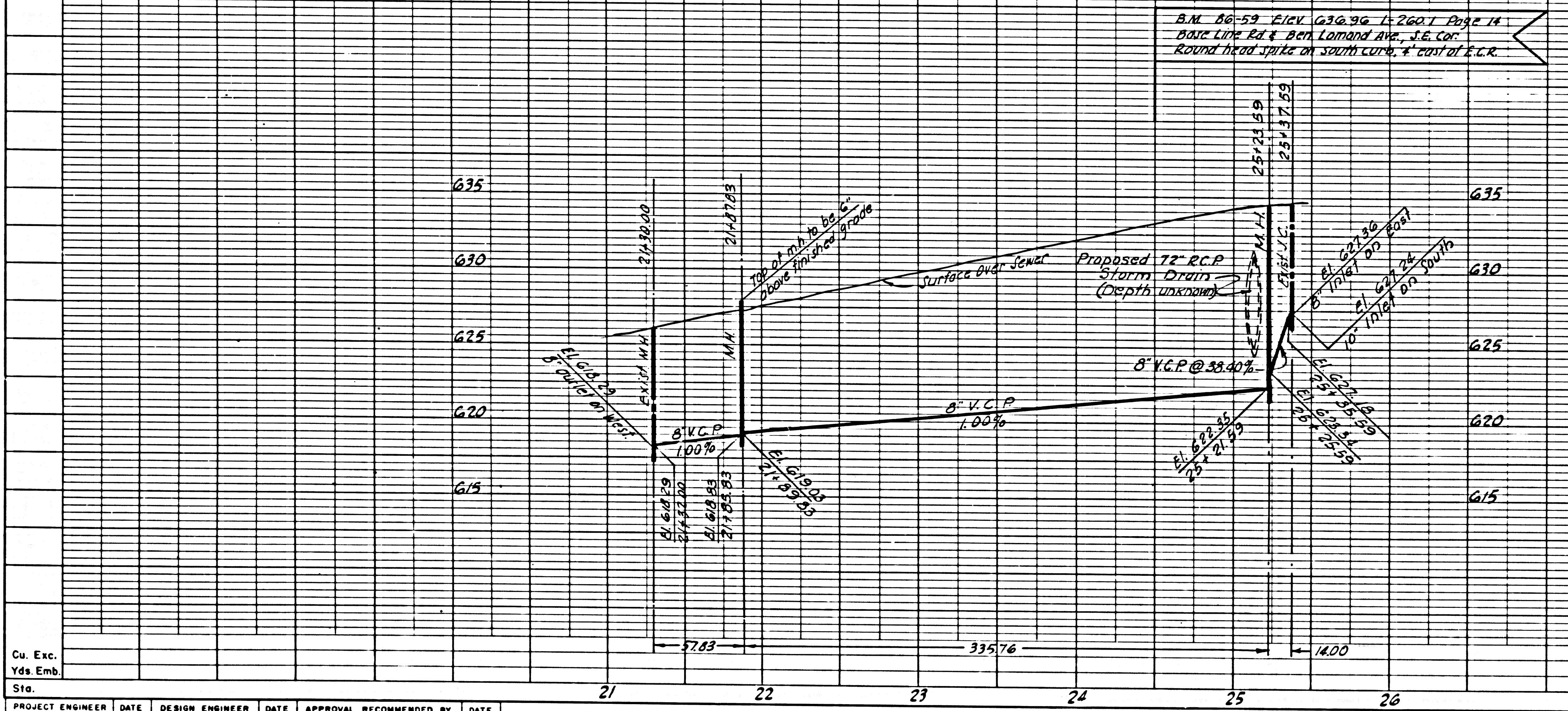
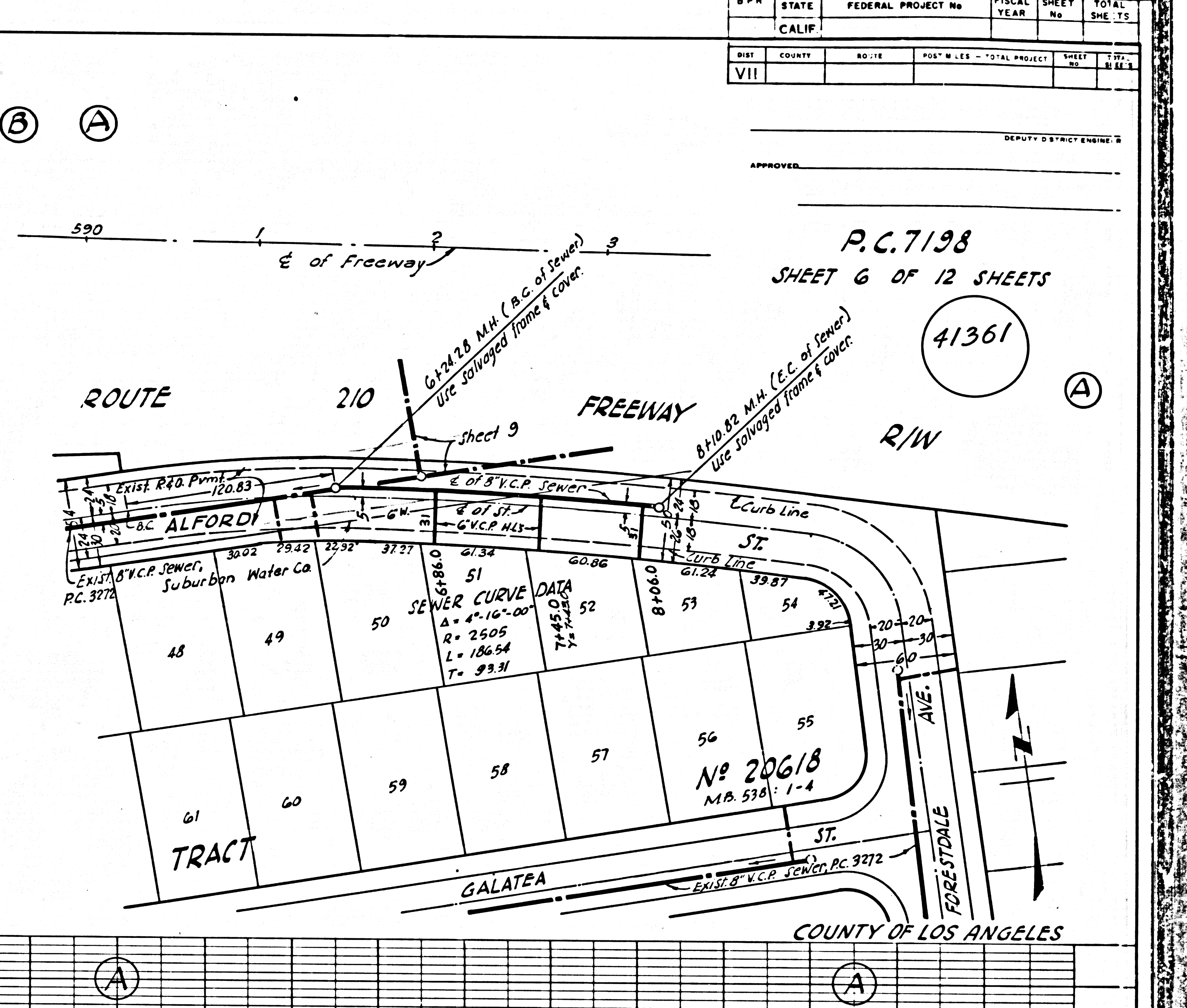
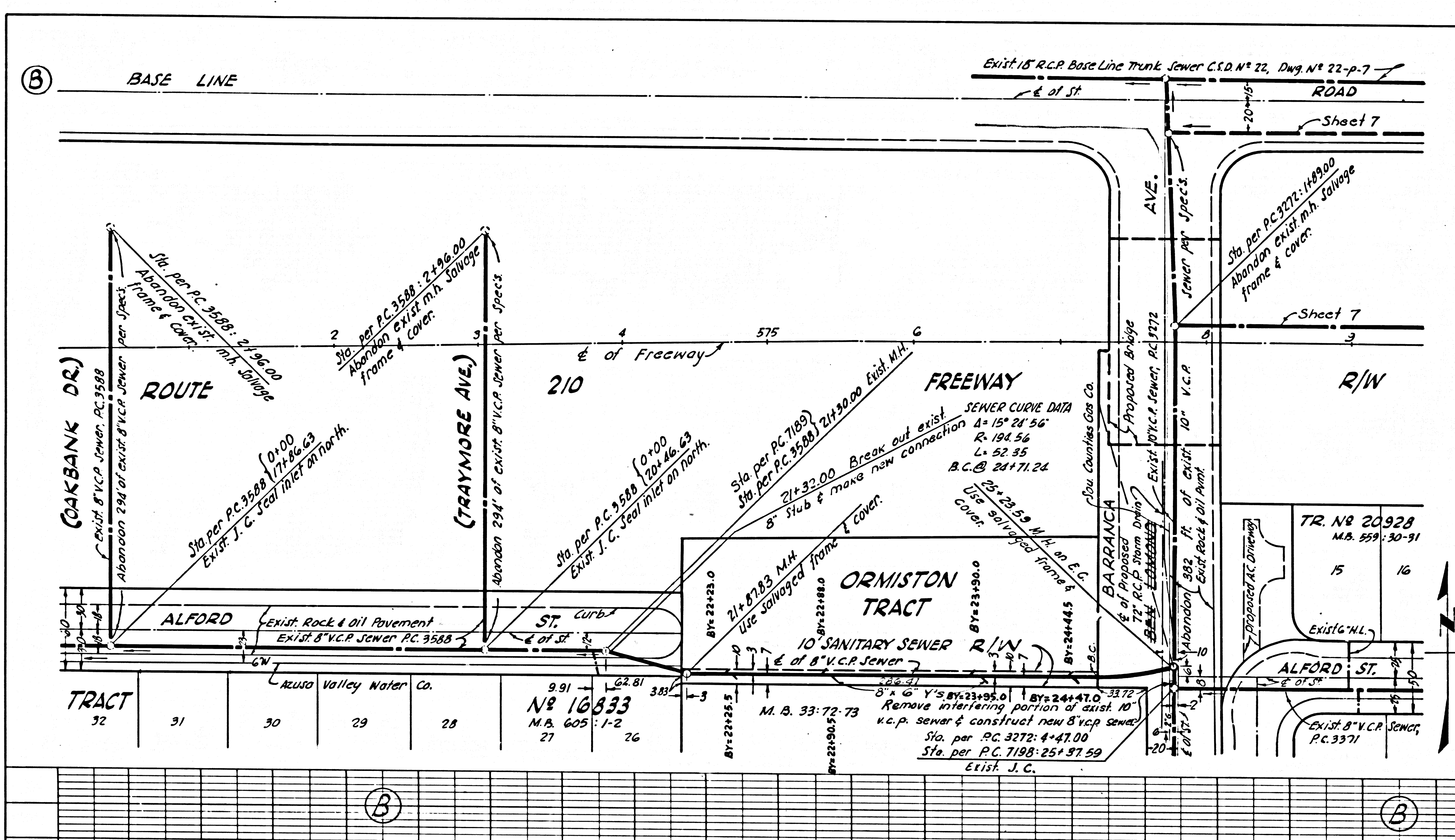
41360



CITY OF AZUSA

Form No. 1

DIST	COUNTY	NO. 11	POST MILES - TOTAL PROJECT	SHEET NO.	TOTAL SHEETS
VII					



DESIGN DEPT	INITIAL	DATE
DESIGNED		
TRACED		
CHECKED		
SUPERVISED BY		
RIGHT OF WAY		

PROJECT ENGINEER	DATE	DESIGN ENGINEER	DATE	APPROVAL	RECOMMENDED BY	DATE

Cu. Exc.
Yds Emb.

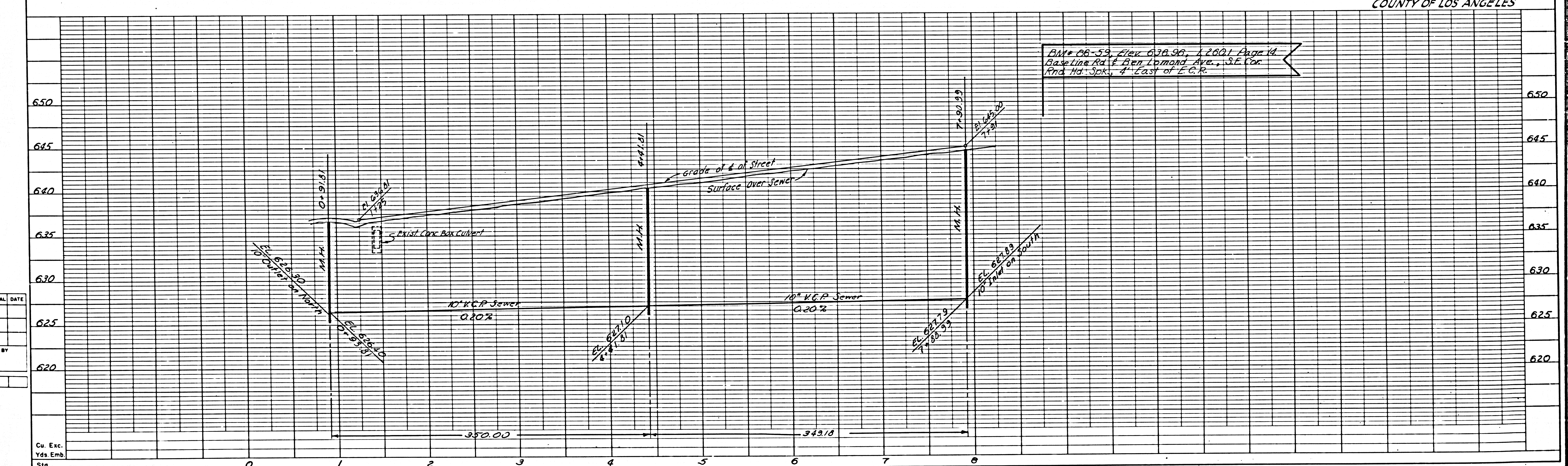
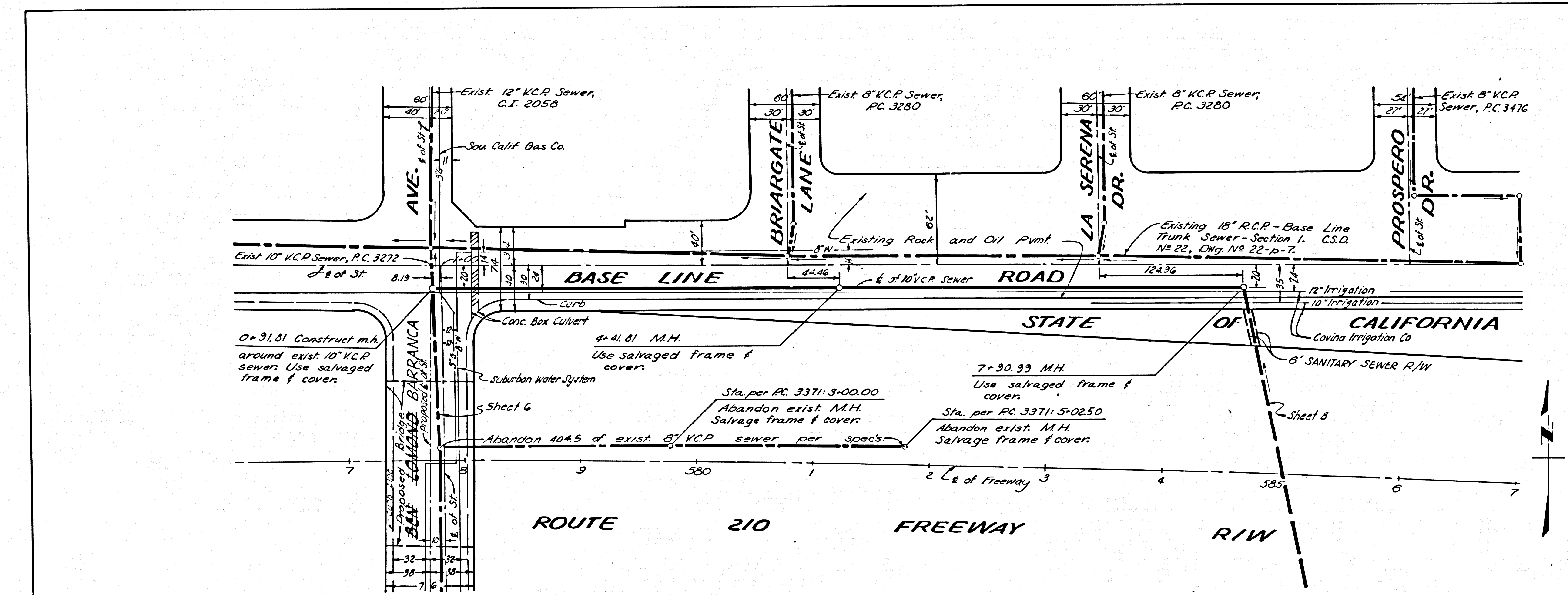
Sta.

DIST	COUNTY	RD. NO.	POST MILES - TOTAL PROJECT	SHEET NO.	TOTAL SHEETS

DEPUTY DISTRICT ENGINEER
 APPROVED: _____

P.C. 7198
 SHEET 7 OF 12 SHEETS

41362



DESIGN DEPT	INITIAL	DATE
DESIGNED		
TRACED		
CHECKED		
SUPERVISED BY		

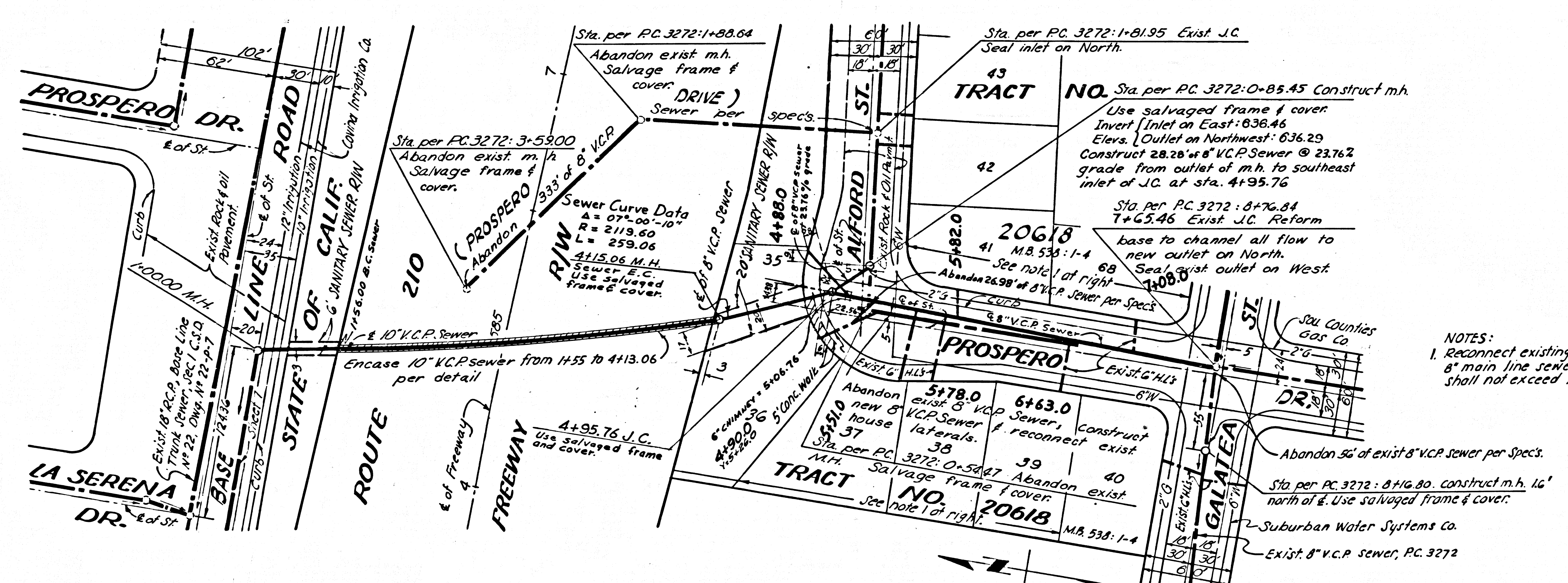
PROJECT ENGINEER	DATE	DESIGN ENGINEER	DATE	APPROVAL	RECOMMENDED BY	DATE

B.P.R.	STATE	FEDERAL PROJECT No.	FISCAL YEAR	SHEET No.	TOTAL SHEETS
	CALIF.				
Dist.	County	RD No.	POST MILES - TOTAL PROJECT	SHEET No.	TOTAL SHEETS
VII					

DEPUTY DISTRICT ENGINEER
APPROVED: _____

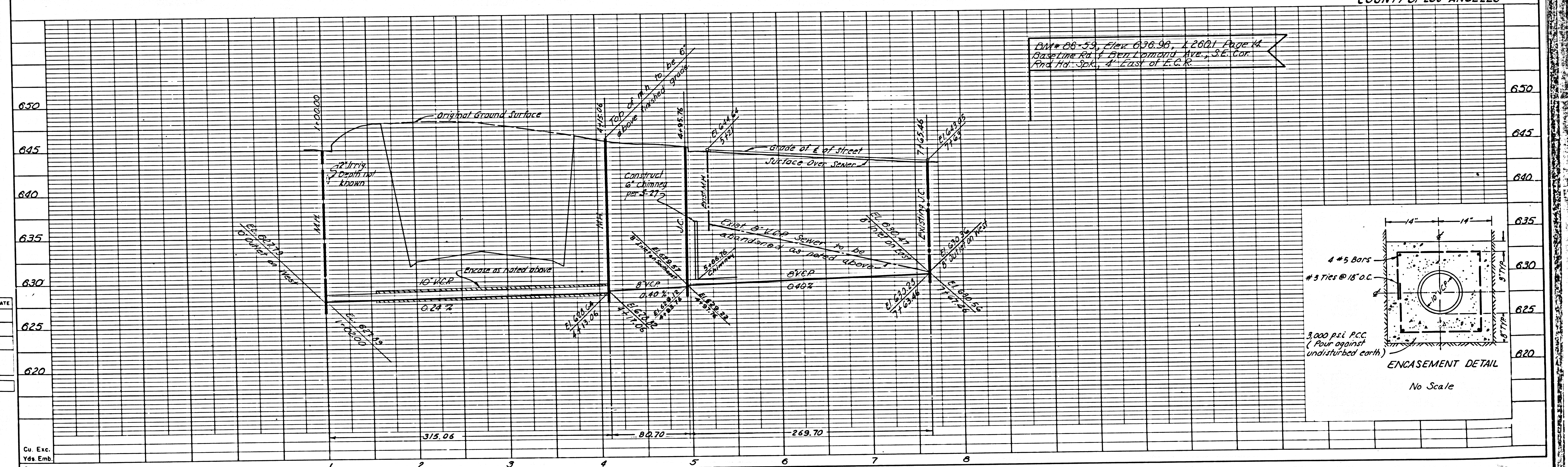
P.C. 7198
SHEET 8 OF 12 SHEETS

41363



NOTES:
1. Reconnect existing house laterals to new 8\"/>

COUNTY OF LOS ANGELES



DESIGN DEPT	INITIAL	DATE
DESIGNED		
TRACED		
CHECKED		
SUPERVISED BY		
RIGHT OF WAY		

PROJECT ENGINEER	DATE	DESIGN ENGINEER	DATE	APPROVAL RECOMMENDED BY	DATE

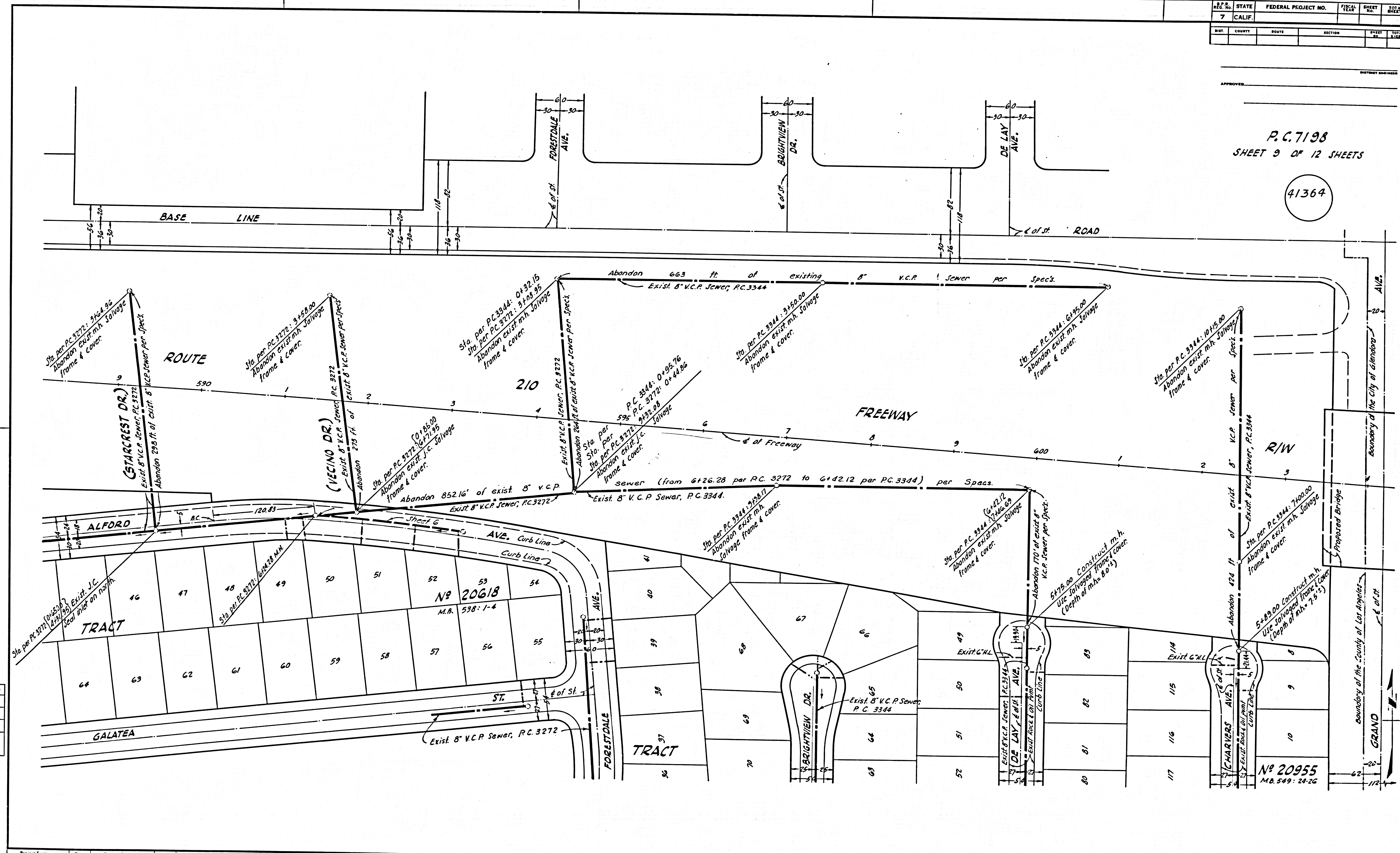
Cu. Exc.
Yds. Emb.

Sta. _____

STATE	FEDERAL PROJECT NO.	FISCAL YEAR	SHEET NO.	TOTAL SHEETS
CALIF.			7	12
COUNTY	ROUTE	SECTION	SHEET NO.	TOTAL SHEETS

P.C. 7198
SHEET 9 OF 12 SHEETS

41364



DESIGN	DATE	REVISION	DATE
Designed			
Traced			
Checked			
Supervised by			

Project Engineer	Date	Design Engineer	Date	Approval Recommended By	Date

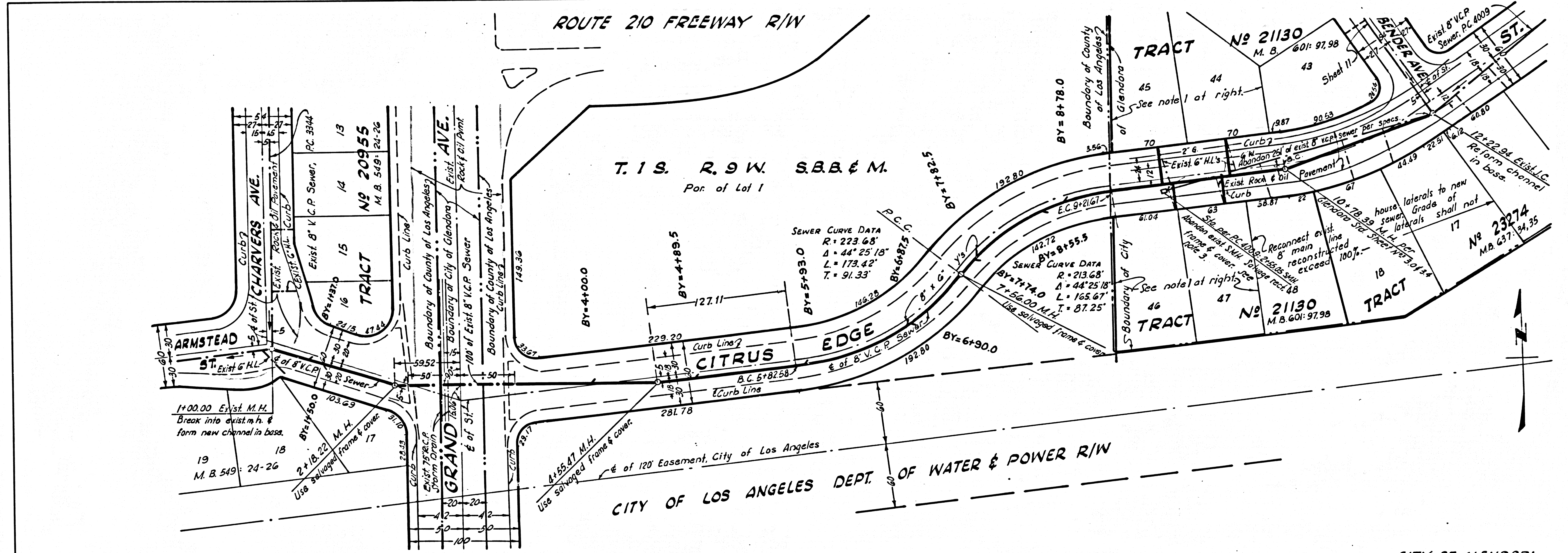
COUNTY OF LOS ANGELES

DIST	STATE	FEDERAL PROJECT No	FISCAL YEAR	SHEET No	TOTAL SHEETS
VII	CALIF	210		10	12
COUNTY	NO. 11	PC&W LINES - TOTAL PROJECT	SHEET No	TOTAL SHEETS	
LA	210				

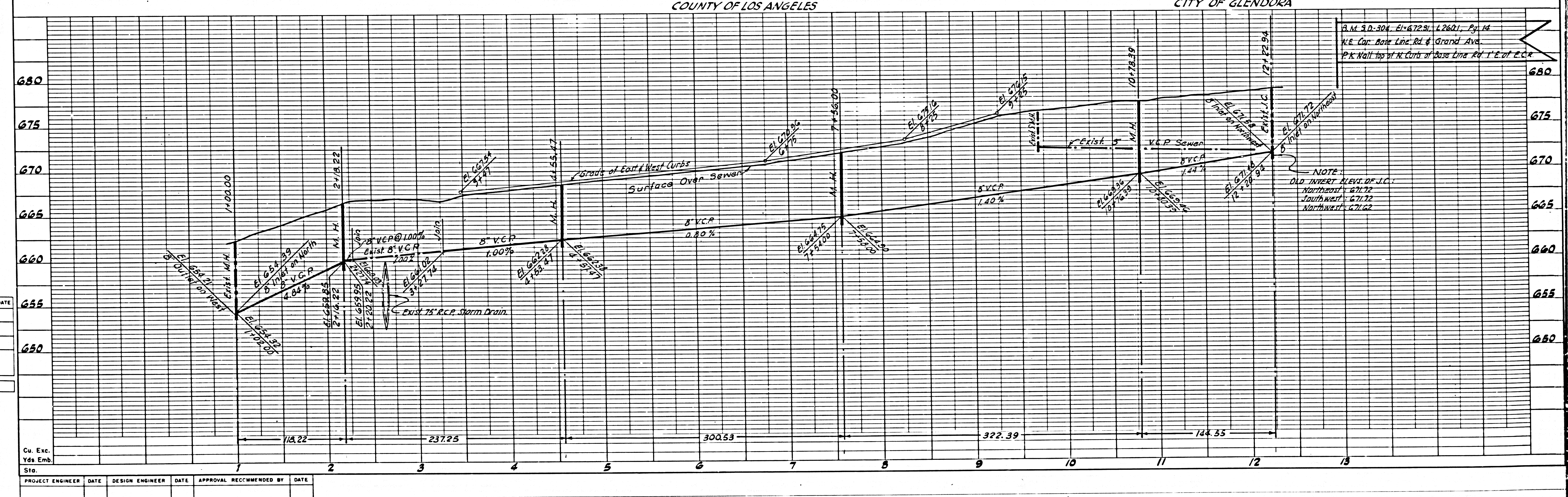
DEPUTY DISTRICT ENGINEER
 APPROVED: _____

P.C. 7198
 SHEET 10 OF 12 SHEETS

41365



- NOTES:
1. Abandon exist. house laterals to Lots 44, 45, 46 & 47, construct new 6" v.c.p. house laterals from new 8" main line sewer to property lines; 4" reconnect exist. house sewers. Contractor shall maintain sewer service of all times.
 2. All Glendora sewers shall be constructed of vitrified clay pipe of mechanical joint Wedgelock Type Design or equal.
 3. The contractor shall deliver salvaged rectangular m/h frame & cover to City of Glendora Corporation Yard, 440 S. Lorraine Ave., Glendora, California.



DESIGN DEPT	INITIAL	DATE
DESIGNED		
TRACED		
CHECKED		
SUPERVISED BY		

Cu. Exc.	Yds. Emb.
118.22	237.25
300.53	322.39
144.35	

PROJECT ENGINEER	DATE	DESIGN ENGINEER	DATE	APPROVAL RECOMMENDED BY	DATE
------------------	------	-----------------	------	-------------------------	------

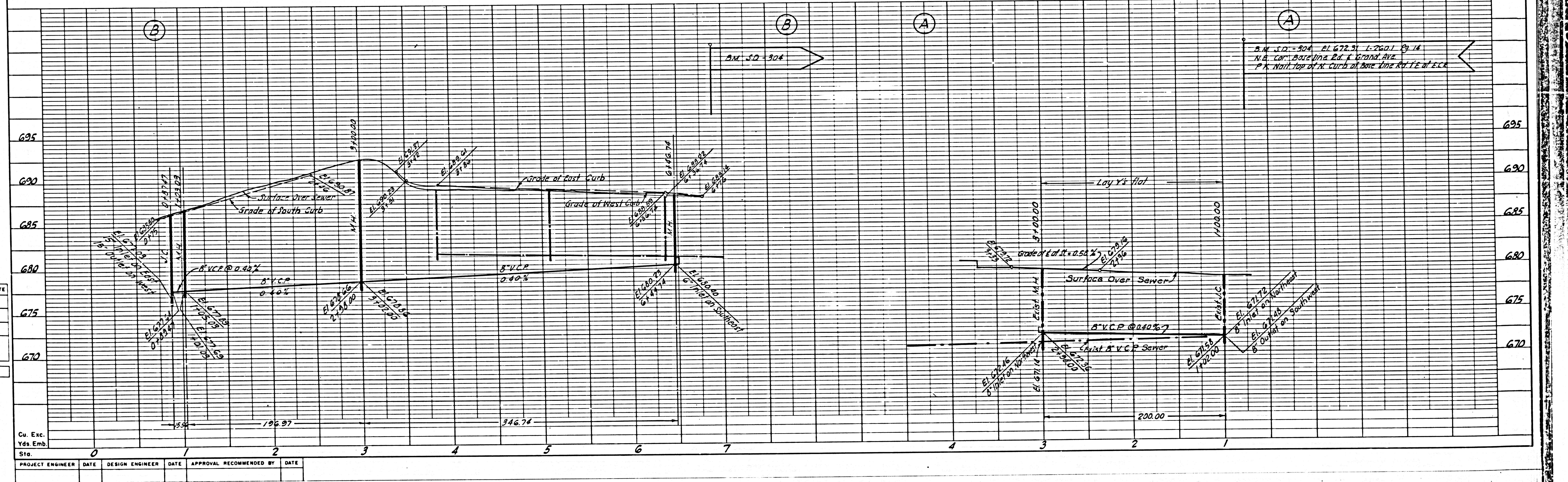
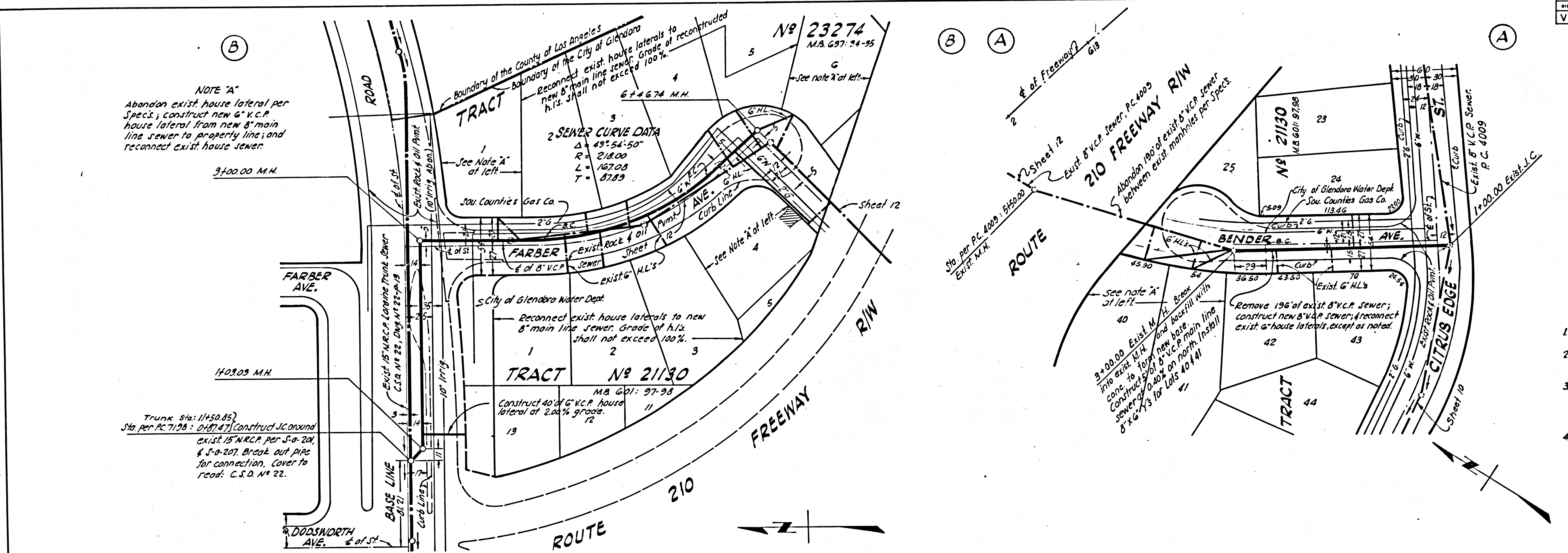
BPR	STATE	FEDERAL PROJECT NO.	FISCAL YEAR	SHEET NO.	TOTAL SHEETS
	CALIF.			VII	

DEPUTY DISTRICT ENGINEER
 APPROVED: _____

P.C. 7198
 SHEET 11 OF 12 SHEETS

41366

- NOTES:
- Contractor shall maintain sewer service at all times during construction.
 - All Glendora sewers shall be constructed of vitrified clay pipe of mechanical joint "Wedge Lock Type Design" or equal.
 - House lateral locations on this sheet are approximate only. The City Engineer of Glendora (or his authorized representative) will determine the final locations and grades during construction.
 - Manholes on this sheet are to be constructed per Glendora Standard Sheet No. 3.0 f.3.4, except as noted.



DESIGN DEPT	INITIAL	DATE
DESIGNED		
TRACED		
CHECKED		
SUPERVISED BY		
POINT OF WAY		

Cu. Exc.						
Yds. Emb.						
Stn.						
PROJECT ENGINEER	DATE	DESIGN ENGINEER	DATE	APPROVAL	RECOMMENDED BY	DATE

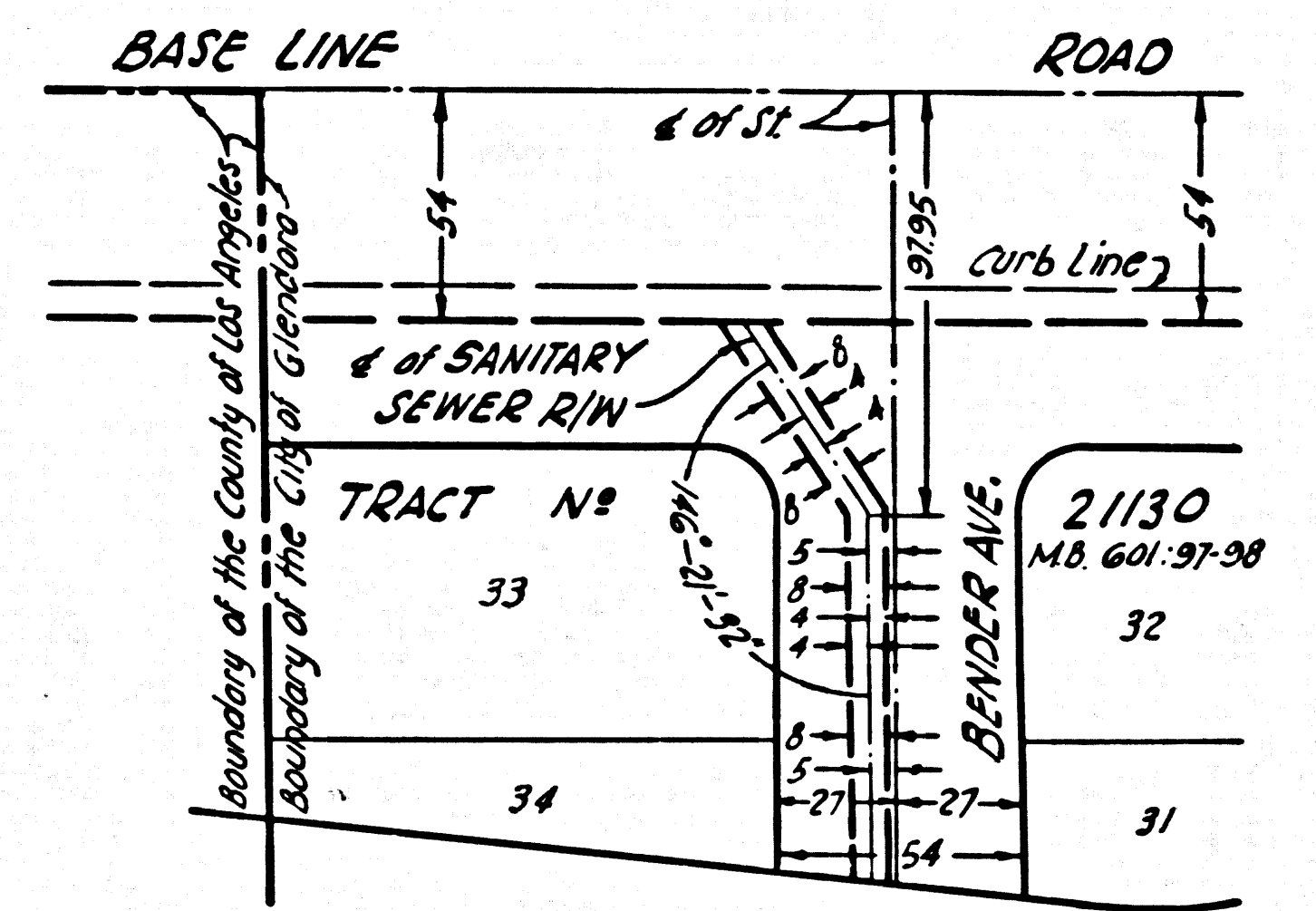
FILE NO.	STATE	FEDERAL PROJECT NO.	FISCAL YEAR	SHEET NO.	TOTAL SHEETS
7	CALIF.				
DIST.	COUNTY	ROUTE	SECTION	SHEET NO.	TOTAL SHEETS
VII	LA				

APPROVED: _____
DISTRICT ENGINEER

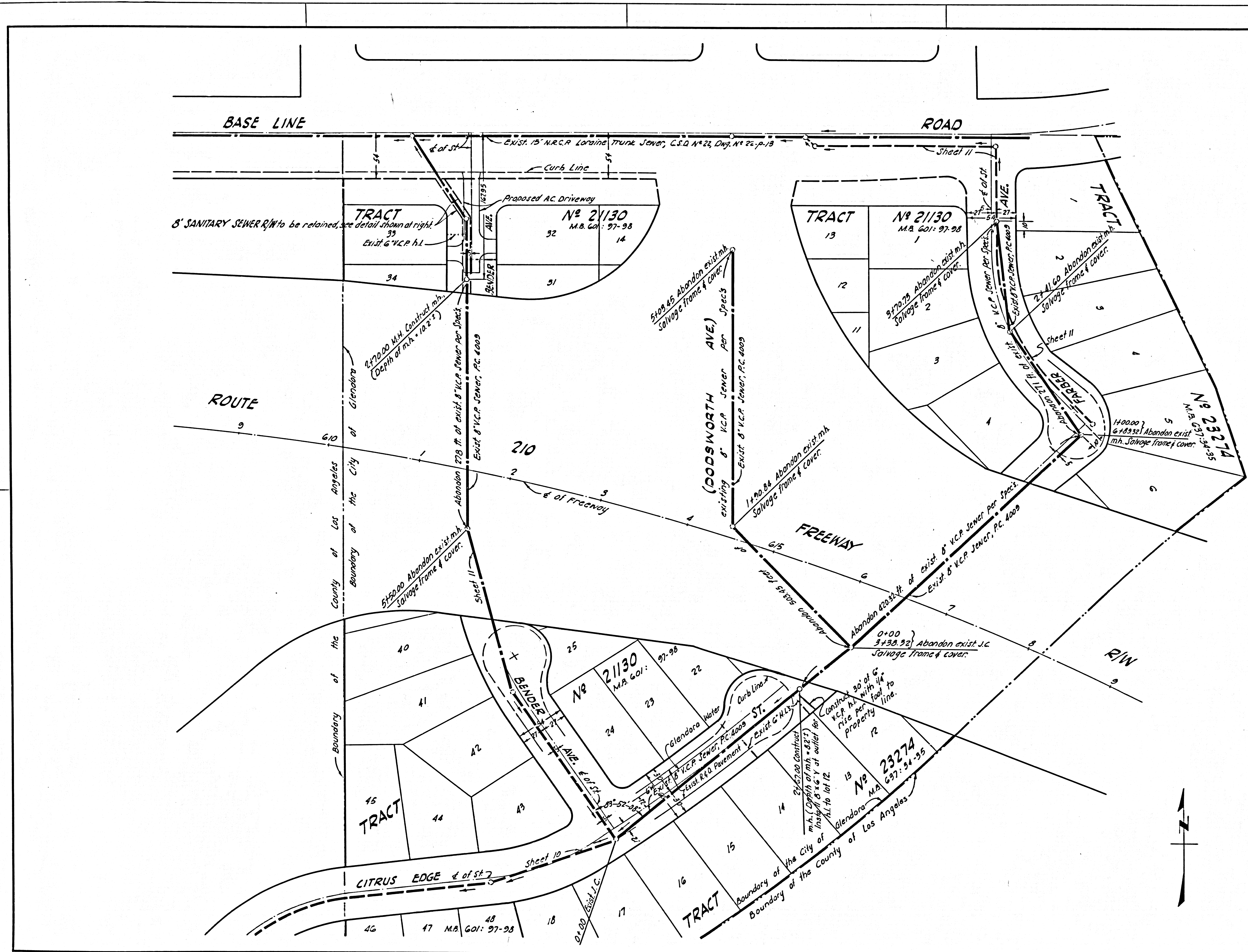
P.C. 7198
SHEET 12 OF 12 SHEETS

41367

- NOTES:
- All Glendora sewers shall be constructed of vitrified clay pipe of mechanical Wedge Lock Type Design or equal.
 - House lateral locations on this sheet are approximate, only. The City Engineer of Glendora (or his authorized representative) will determine the final locations and grades during construction.
 - Manholes on this sheet are to be constructed per Glendora Standard Sheet No. 3.0 & 3.4, except as noted.
 - The Contractor shall deliver one salvaged manhole frame and cover from this sheet to the City of Glendora Corp. Yard, 440 S. Lorraine Ave., Glendora. The remaining six salvaged frames and covers shall be delivered to the Resident Engineer.



EASEMENT DETAIL
8' R/W for sanitary sewer purposes to be retained for the City of Glendora, Calif.
Scale 1"=50'



PROJECT ENGINEER	DATE	DESIGN ENGINEER	DATE	APPROVAL RECOMMENDED BY	DATE

CITY OF GLENDORA