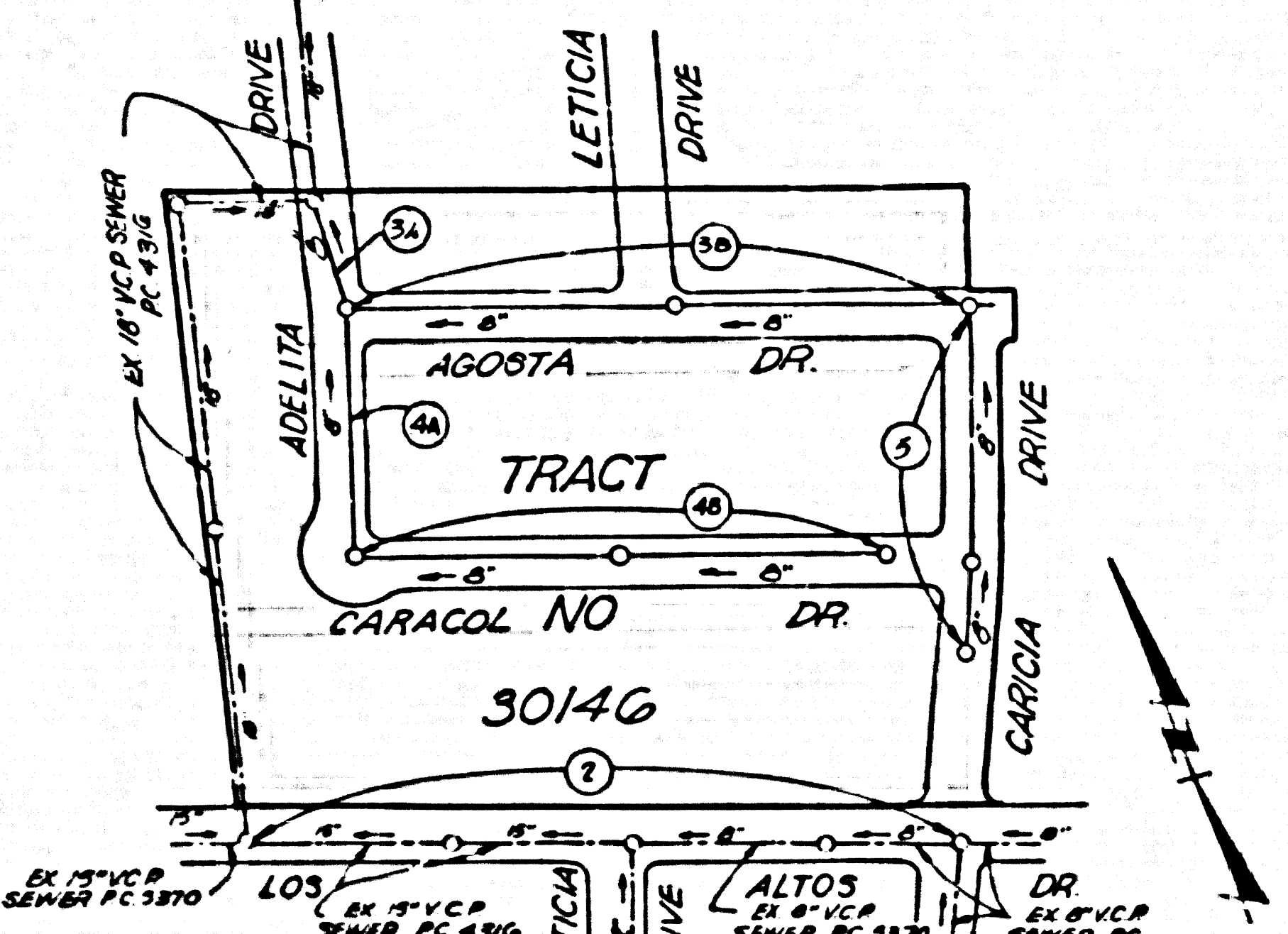


B.M. 50.2581 ELEV. 427.103
 L.E.T. N. CO. 23' E. OF B.C.R. 10
 N.E. COR. Hacienda Blvd. & Los
 Altos Dr. 5' 17" N. of 60' East
 5' 17"
 BASELINE QUAD. 19 55



INDEX MAP
 TRACT NO 30146
 P.C. 7204
 SCALE: 1" = 200'

PRIVATE ENGINEER'S NOTICE TO THE CONTRACTOR:
 The existence and approximate location of underground utilities or structures shown on this plan was determined by a search of the available public records. To the best of our knowledge there are no existing underground utilities or structures except as shown on this plan.
 The contractor is required to take due precautionary measures to protect the utilities or structures shown and any other utilities or structures at the site. It shall be the contractor's responsibility to notify the owners of the utilities or structures concerned before starting work.

Any connection to the sewage system of County Sanitation District, provided directly or indirectly by the sewers shown on these plans, shall be considered a temporary connection until all area sewered is annexed to said district, at which time the connection shall become permanent. If for any reason the annexation to the district of any area sewered hereunder is not completed, the property not in the district will be required to disconnect unless a contract is entered into with the district providing for the disposal of sewage from the area.

LA PUENTE BLDG. DIST. NO. 2

- NOTES:
1. PROVIDE STAKES ON THE PROPERTY LINE OR PROPERTY LINES PRODUCED AT RIGHT ANGLES TO THE SEWER LINE AT THE CENTER LINE OF EACH MANHOLE.
 2. NO REPRESENTATIVE OF THE COUNTY ENGINEER WILL SHIFT OR LAY OUT ANY PORTION OF THE WORK.
 3. THE PRIVATE ENGINEER SHALL FURNISH THE COUNTY ENGINEER WITH GRAB SHEETS AND STATIONING FOR ALL HOUSE LATERALS AND Y BRANCHES AND SHALL PROVIDE STAKES FOR THEM AT THEIR PROPER LOCATIONS WITH STATIONING PLAINLY MARKED. ALL HOUSE LATERALS SHALL BE CONSTRUCTED BY A STRAIGHT ALIGNMENT AT RIGHT ANGLES FROM THE MAIN LINE SEWER EXCEPT AS SHOWN ON THE PLANS. GRAB SHEETS SHALL BE SUBMITTED TO THE COUNTY ENGINEER WITHIN THE GRAB SHEET SUBMITTAL DEADLINE ANY CHANGE IN ALIGNMENT SHALL BE REQUESTED IN WRITING BY THE PRIVATE ENGINEER.
 4. THE PRIVATE ENGINEER SHALL FURNISH THE HOUSE LATERAL DEPTH AT THE PROPERTY LINE BELOW THE TOP OF CURB ELEVATION FOR EACH HOUSE LATERAL ON THE GRADE SHEET.
 5. NO REVISIONS SHALL BE MADE IN THESE PLANS WITHOUT THE APPROVAL OF THE COUNTY ENGINEER.
 6. THE CONTRACTOR SHALL NOTIFY THE CONSTRUCTION DIVISION BY TELEPHONE, ALAMOND 9-0747, EXT. 8818, AT LEAST TWENTY-FOUR HOURS BEFORE STARTING ANY WORK UNDER THIS CONTRACT.
 7. MANHOLES SHALL BE BRICK SEWER STRUCTURES PER S-7. PRECAST CONCRETE MANHOLES PER S-6 OR S-5 MAY BE USED AS AN ALTERNATE IN LOCATIONS APPROVED BY THE COUNTY ENGINEER.
 8. USE STANDARD MANHOLE FRAMES AND COVERS, S-7, EXCEPT AS NOTED.
 9. MANHOLES SHALL BE CONSTRUCTED ACCORDING TO STANDARD SPECIFICATIONS DATED MAY 1962, ON FILE IN THE OFFICE OF THE COUNTY ENGINEER AND THE DATA HEREON ARE HEREBY MADE A PART OF THE SPECIFICATIONS.
 10. USE EXTRA STRENGTH PIPE, ALL PIPE IS STANDARD BIRTH EXCEPT AS NOTED.
 11. USE STANDARD-MANHOLES OR MECHANICAL JOINTS FOR ALL V.C.P. JOINTS PER SPECS., SECT. 34, 45, 149.
 12. WHERE OVER-SHOULDER MANHOLES ARE SPECIFIED DURING THE CONSTRUCTION OF THE SEWER, THE TOP OF JOINTS SHALL BE 6" OF ABOVE-GROUND AND 4" OF BELOW-GROUND FROM THE SURFACE OF THE DRIVEWAY OR SIDEWALK, EXCEPT AS NOTED.
 13. IF A POWER POLE IS WITHIN THREE FEET OF THE SEWER, THE SEWER SHALL BE BACKLASH, PER S-23. TWO FEET ON EITHER SIDE FROM THE POINT OF INTERFERENCE.
 14. IF DURING THE COURSE OF CONSTRUCTION IT IS DETERMINED THAT THERE IS LESS THAN FOUR FEET OF COVER OVER THE TOP OF A MAIN LINE OR HOUSE LATERAL V.C.P. SEWER WHICH IS NOT INDICATED ON THE PLANS, THE PIPE SHALL BE BACKLASH PER S-23. NO OTHER COVER IS APPROVED BY THE COUNTY ENGINEER.
 15. HOUSE LATERALS TO BE CONSTRUCTED WITHIN PAVED AREAS AT PROPERTY LINE, ... OR ... FEET BELOW CURB GRADE EXCEPT AS NOTED.
 16. BRANCHES ALL TRINCHES WITHIN PAVED AREAS TO MEET L.A. COUNTY ROAD DEPT. OR CALIFORNIA STATE HIGHWAY REQUIREMENTS IN ACCORDANCE WITH PERMITS.
 17. FOR ALLOWABLE LOADS REFER TO FORMULA NO. ... SPECS., SEC. 64.
 18. ALL STATE AND LOCAL TRENCH SAFETY ORDERS WILL BE RIGIDLY ENFORCED.

NO CONNECTIONS FOR THE DISPOSAL OF INDUSTRIAL WASTES SHALL BE MADE TO SEWERS SHOWN ON THESE DRAWINGS WITHOUT WRITTEN PERMISSION FROM THE CHIEF ENGINEER AND GENERAL MANAGER OF THE COUNTY SANITATION DISTRICTS.

COLLECT CHARGES AS INDICATED
 P.R. Smith 1/2/65

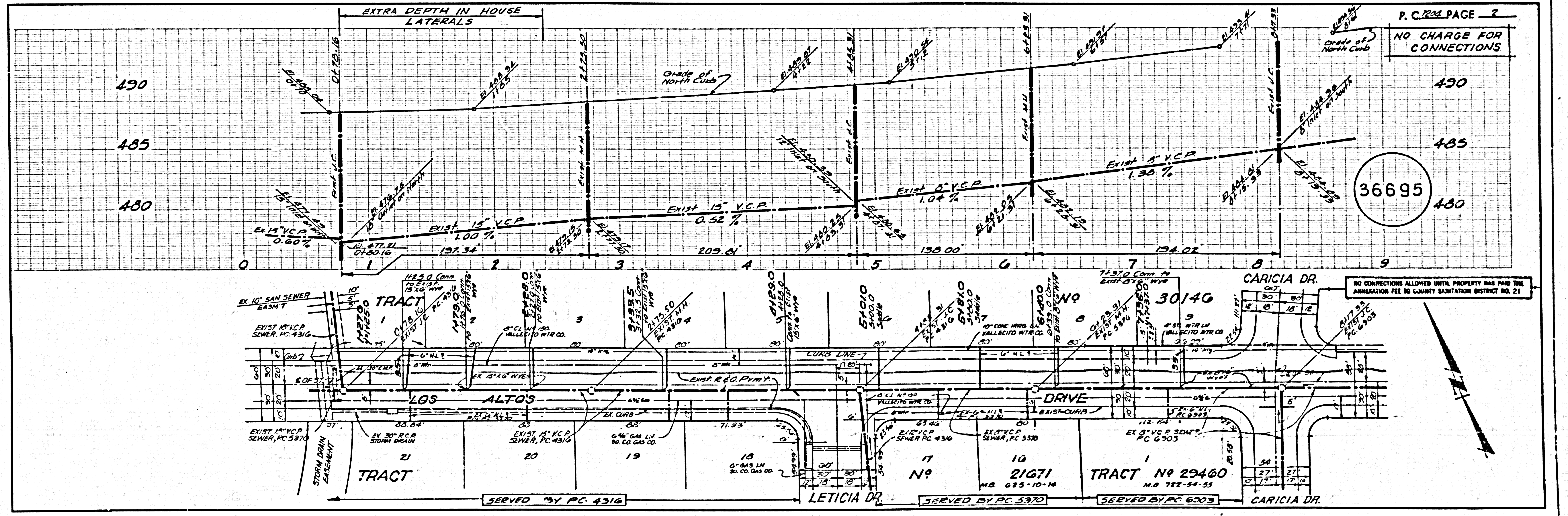
TRACT NO 30146
 PRIVATE CONTRACT NO. 7204

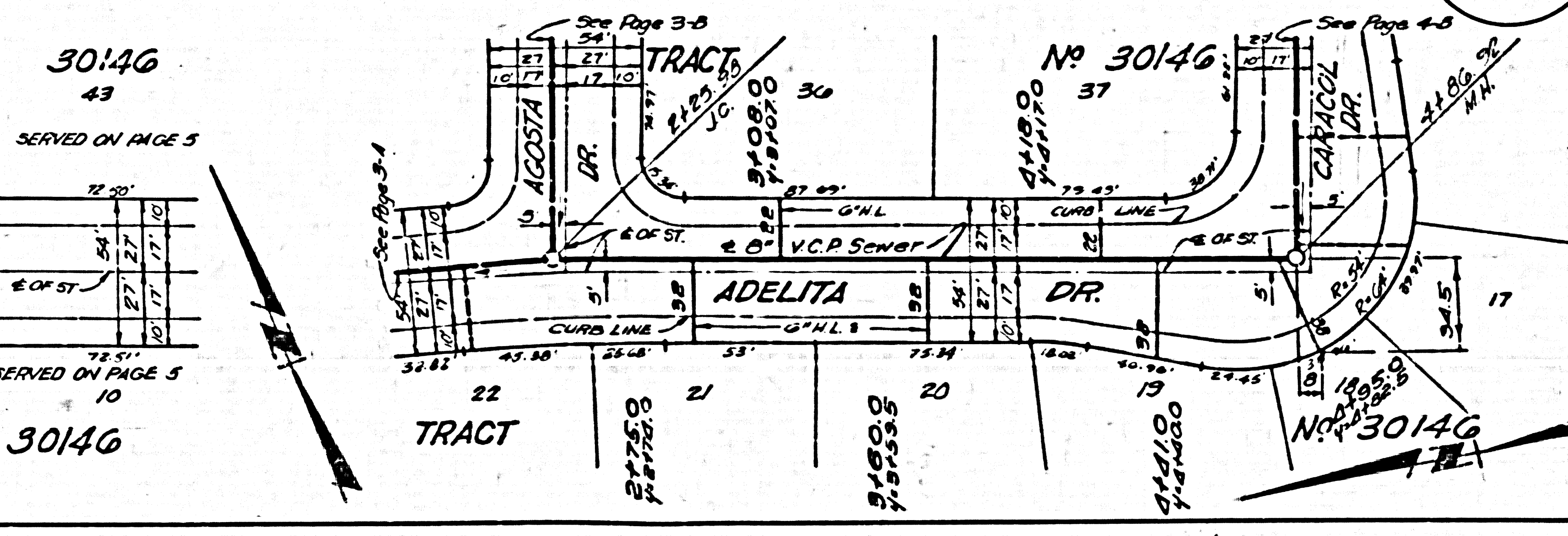
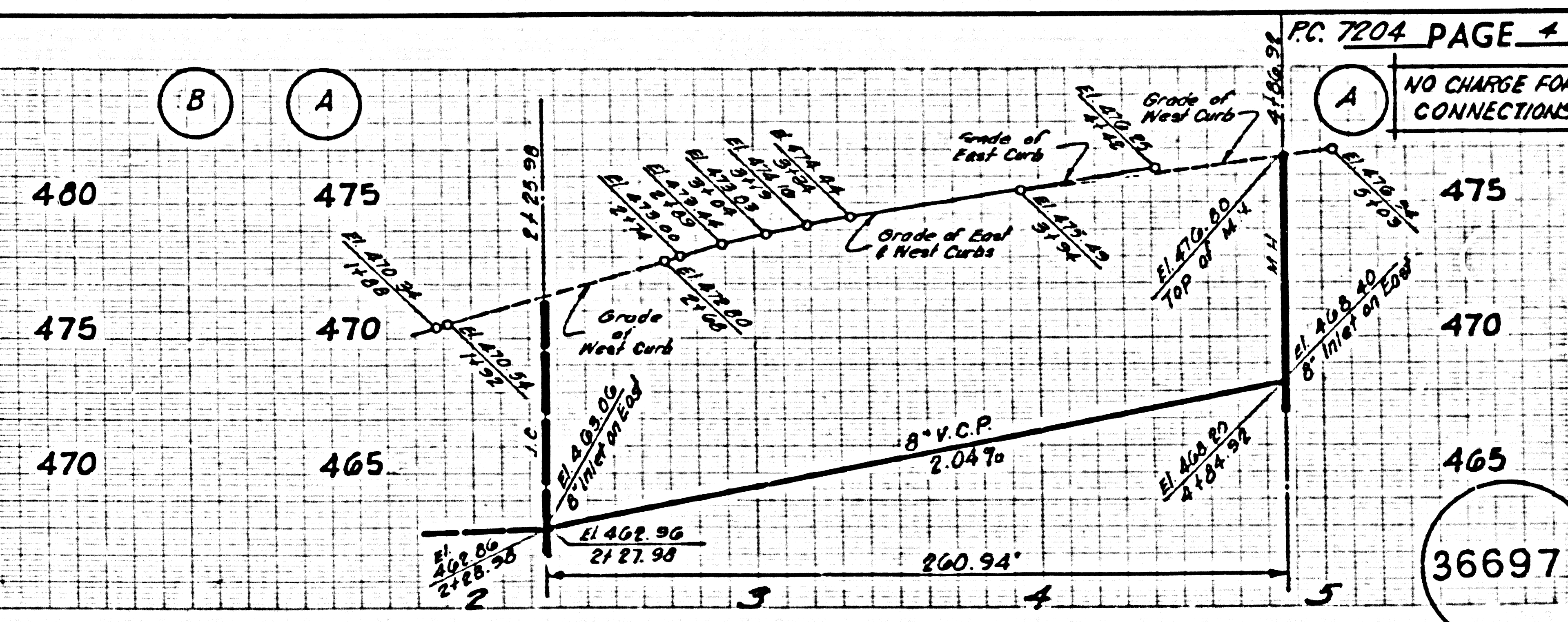
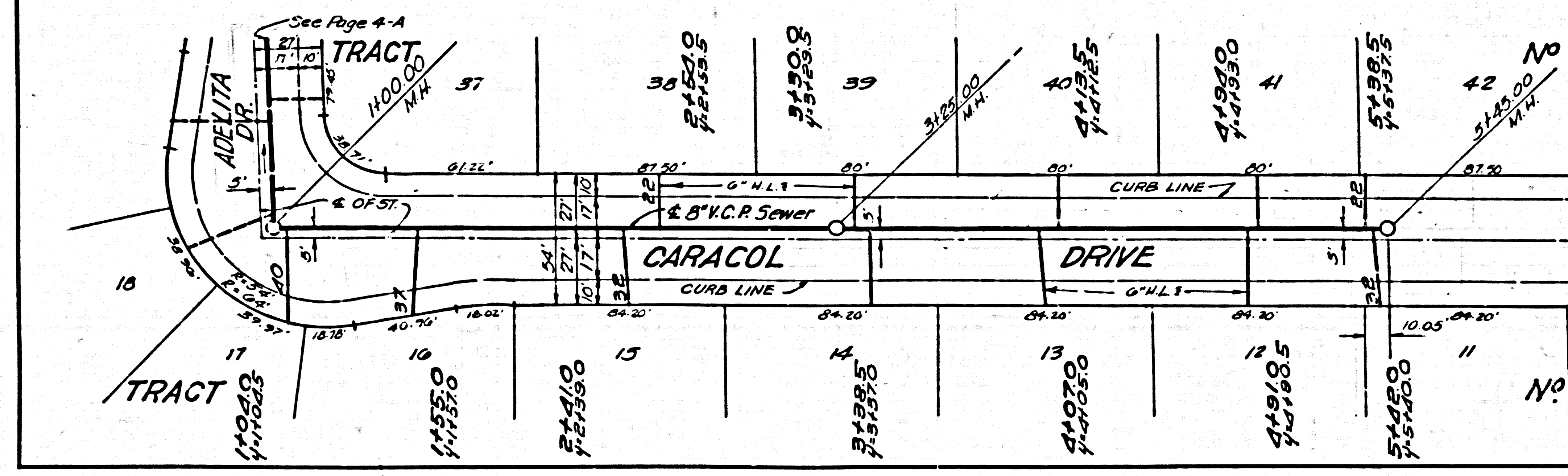
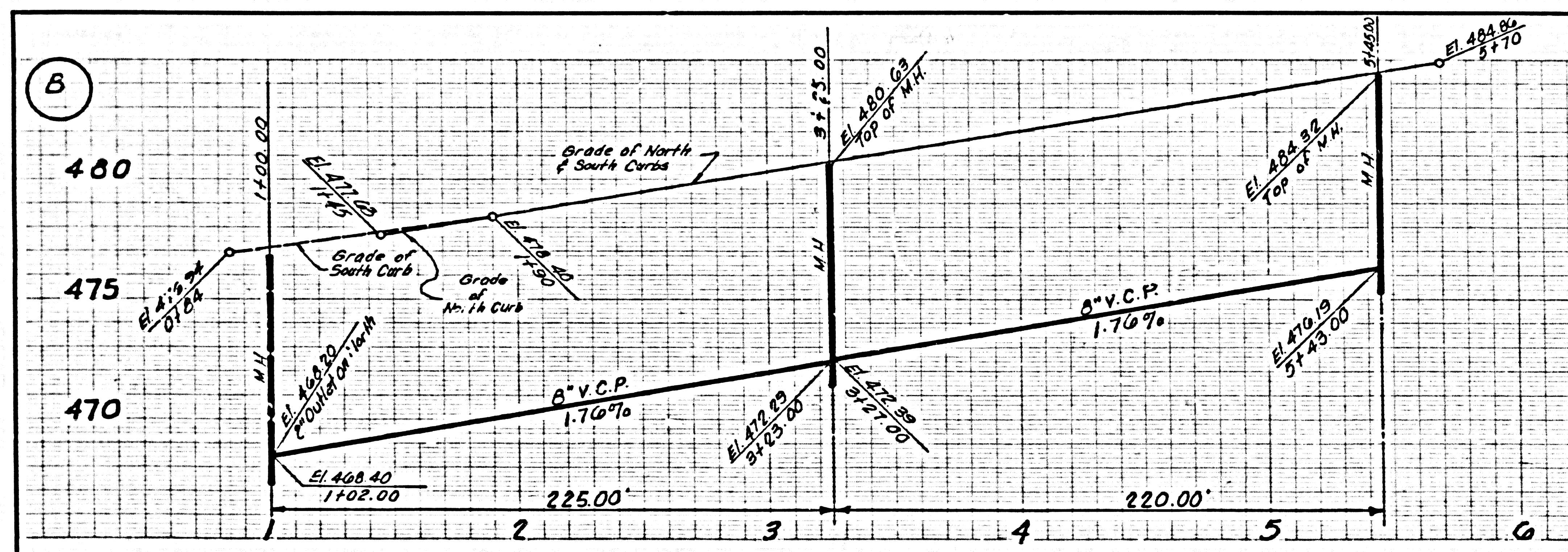
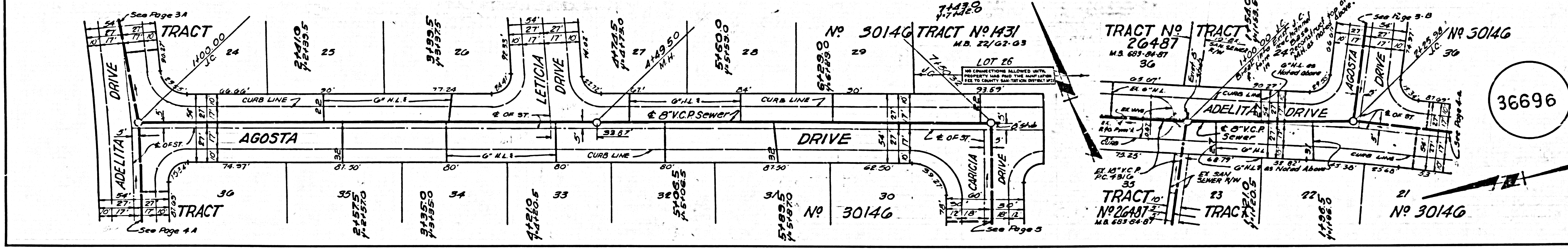
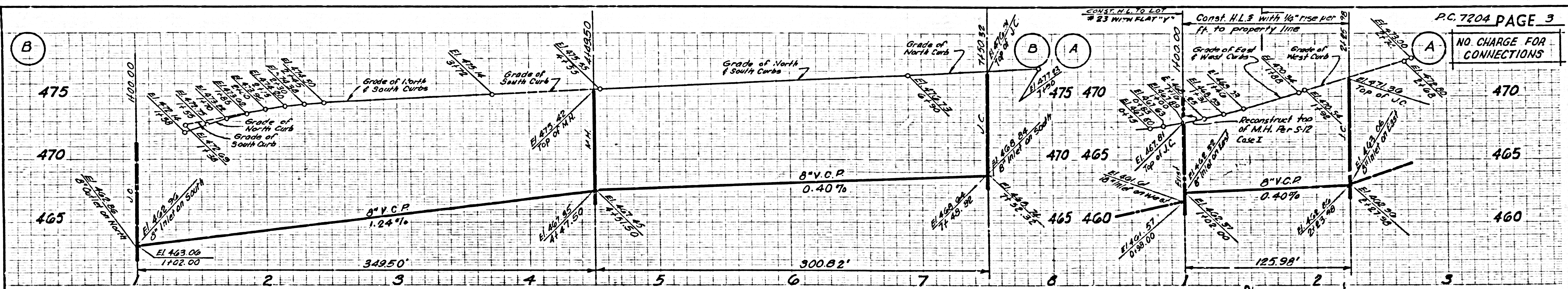
W.S. 36
 5 SHEETS, 5 PAGES
 SCALE: VERT. 1" = 4' HORIZ. 1" = 40'
 DECEMBER, 1964
 PREPARED IN THE OFFICES OF
 KEMMERER ENG. CO. INC.
 145 NO. PAINTER AVE. WHITTIER CAL.
 BY Robert R. Filmore
 REG. C.E. NO. 11349

FOR LEGEND SEE PLAN NO. S-64

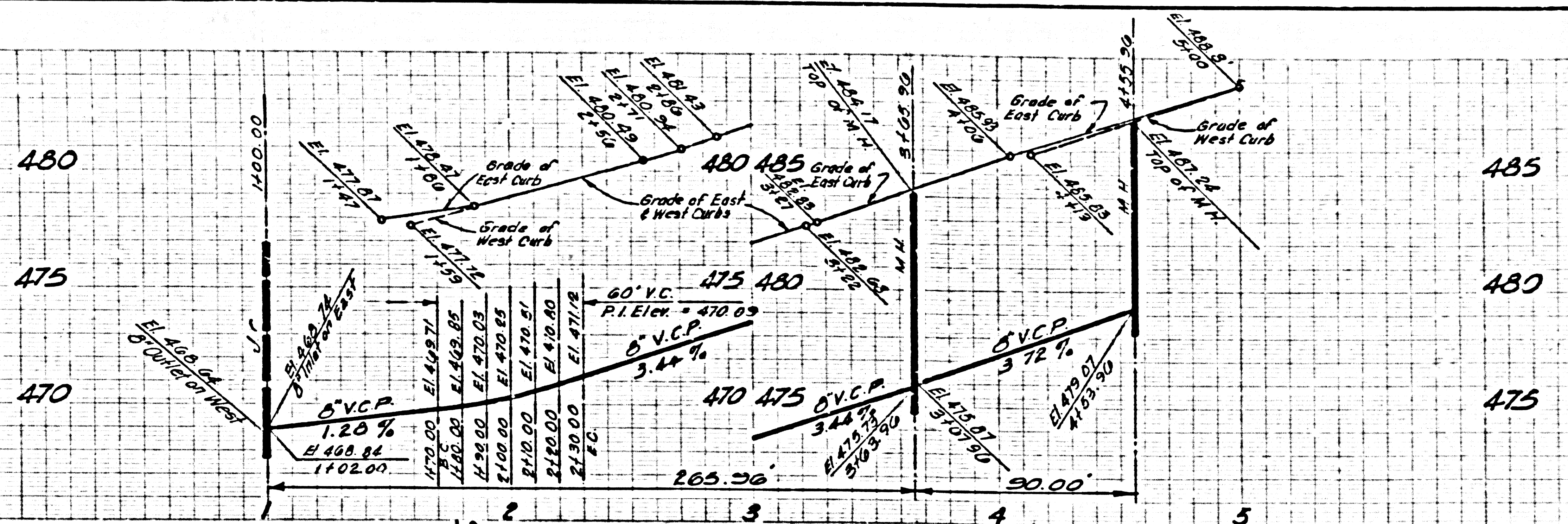
NOTE:
 GRADES TO WHICH THIS IMPROVEMENT IS TO BE CONSTRUCTED ARE SHOWN ON PLANS AND PROFILES. GRADE POINTS FOR TOP OF CURB, CENTER LINE OF STREETS, OR CENTER LINE OF ALLEYS ARE SHOWN BY CIRCLES ON PROFILES AT 10' INTERVALS BETWEEN DESIGNATED POINTS. ELEVATIONS ARE FEET ABOVE U.S.C. & G.S. SEA LEVEL DATUM OF 1929.
 THIS DRAWING AND THE DATA HEREON ARE HEREBY MADE A PART OF THE SPECIFICATIONS.
 WORK SHALL BE CONSTRUCTED ACCORDING TO STANDARD SPECIFICATIONS DATED MAY 1962, ON FILE IN THE OFFICE OF THE COUNTY ENGINEER AND THE DATA HEREON ARE HEREBY MADE A PART OF THE SPECIFICATIONS.
 APPROVAL OF THIS PLAN BY THE COUNTY OF LOS ANGELES DOES NOT CONSTITUTE A REPRESENTATION AS TO THE ACCURACY OF THE LOCATION OR OF THE EXISTENCE OR NON-EXISTENCE OF ANY UNDERGROUND UTILITIES PIPE, OR STRUCTURE WITHIN THE LIMITS OF THIS PROJECT. THIS NOTE APPLIES TO ALL PAGES.
 IF WORK IS TO BE DONE IN A STATE HIGHWAY, A PERMIT MUST BE OBTAINED FROM THE STATE OF CALIFORNIA, DIVISION OF HIGHWAYS, 180 SOUTH SPRING STREET, LOS ANGELES, CALIFORNIA.

COUNTY OF LOS ANGELES, CALIFORNIA
 JOHN A. LAMBE, COUNTY ENGINEER J. D. PARKHURST, CHIEF ENGINEER
 CO. SAN DIST. NO. 21
 APPROVED BY: [Signature] APPROVED BY: [Signature]
 SUBMITTED BY: [Signature] SAN DISTRICT REGIONAL ENGINEER
 CHECKED BY: [Signature] 2-7-65
 REG. C.E. NO. 11349
 36694
 J.N. 0364.64





COLLECT CHARGES AS INDICATED



36698

