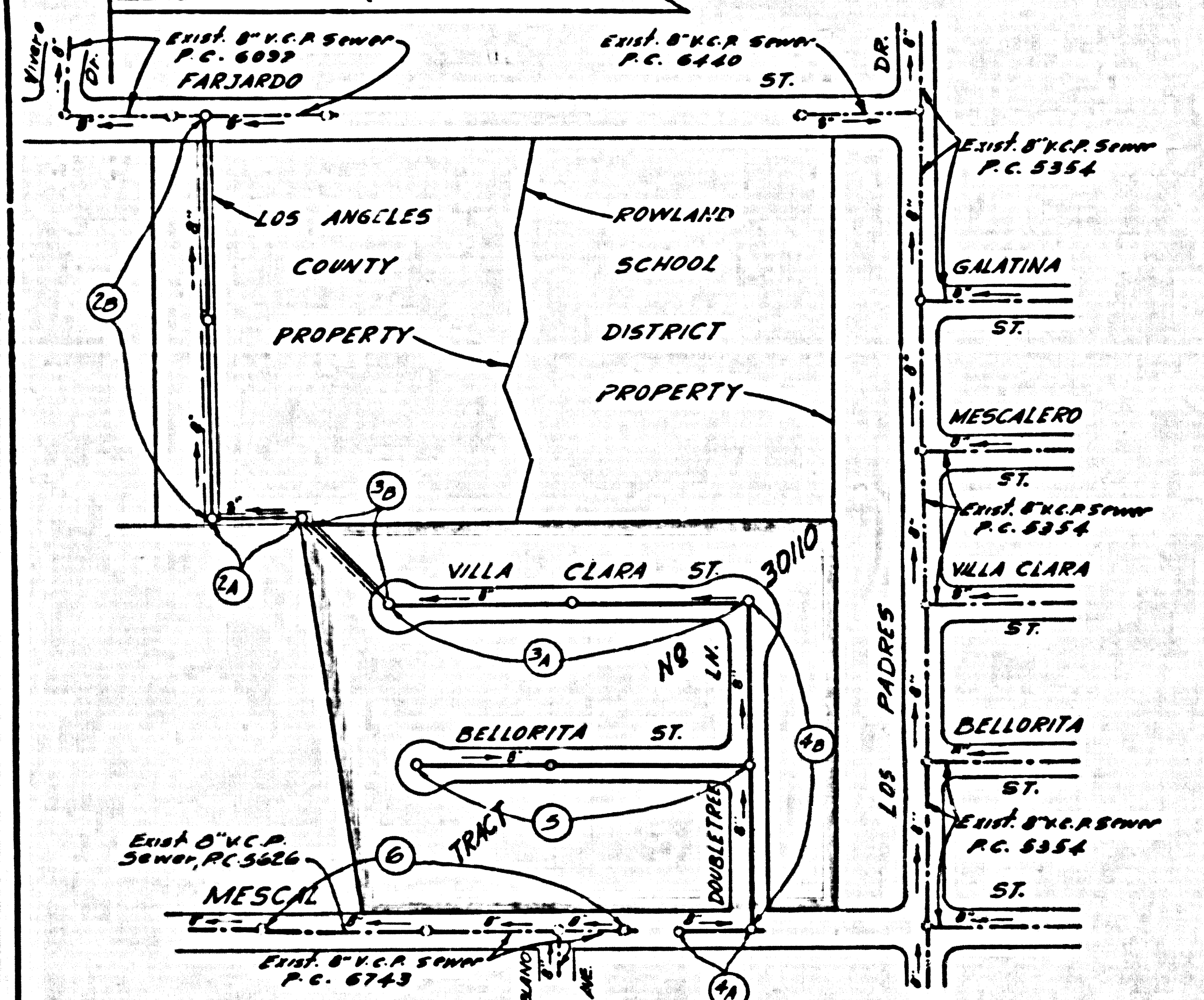


B.M. 56-1635 ELEV. 534.925  
 5'11" Dia. D.M. Top Near W. Edge of  
 Cr. Conc. Storage Tank 2' E. Along C-Level  
 On N. Ely. Cor. Federico Ed. E. Medical St.  
 130' N. W. E. 30' Ely. of 1st  
 OTTERBEIN QUAD. 19-55



INDEX MAP  
 TRACT NO 30110  
 SCALE: 1" = 200' P.C. 7206

**PRIVATE ENGINEER'S NOTICE TO THE CONTRACTOR**  
 The existence and approximate location of underground utilities or structures was determined by a search of the available public records. To the best of our knowledge there are no existing underground utilities or structures except as shown on this plan.  
 The contractor is required to take due precautionary measures to protect the utilities or structures shown and any other utilities or structures of the site. It shall be the contractor's responsibility to notify the owners of the utilities or structures concerned before starting work.

NO DIRECTIONS FOR THE DISPOSAL OF INDUSTRIAL WASTES SHALL BE MADE TO SEWERS SHOWN ON THIS DRAWING WITHOUT WRITTEN PERMISSION FROM THE CHIEF ENGINEER AND GENERAL MANAGER OF THE COUNTY SANITATION DISTRICTS.

LA PUENTE BLDG. DIST. NO. 2

- NOTES:
1. PROVIDE STAKES ON THE PROPERTY LINE OR PROPERTY LINES PRODUCED AT RIGHT ANGLES TO THE SEWER LINE AT THE CENTER LINE OF EACH MANHOLE.
  2. NO REPRESENTATIVE OF THE COUNTY ENGINEER WILL SURVEY OR LAY OUT ANY PORTION OF THE WORK.
  3. THE PRIVATE ENGINEER SHALL FURNISH THE COUNTY ENGINEER WITH GRADE SHEETS AND STATIONING FOR ALL HOUSE LATERALS AND Y-BRANCHES AND SHALL PROVIDE STAKES FOR THEM AT THEIR PROPER LOCATIONS WITH STATIONING PLAINLY MARKED. ALL HOUSE LATERALS SHALL BE CONSTRUCTED IN A STRAIGHT ALIGNMENT AT RIGHT ANGLES TO THE MAIN LINE SEWER EXCEPT AS SHOWN ON THE PLANS. MISALIGNMENTS OF HOUSE LATERALS SHALL HAVE AN ANGLE OF 90 DEGREES UNLESS OTHERWISE SHOWN. ANY CHANGE IN ALIGNMENT SHALL BE REQUESTED BY THE PRIVATE ENGINEER.
  4. THE PRIVATE ENGINEER SHALL FURNISH THE HOUSE LATERAL INVERT AT THE PROPERTY LINE BELOW THE TOP OF CURB ELEVATION FOR EACH HOUSE LATERAL ON THE GRADE SHEET.
  5. NO REVISIONS SHALL BE MADE IN THESE PLANS WITHOUT THE APPROVAL OF THE COUNTY ENGINEER.
  6. THE CONTRACTOR SHALL NOTIFY THE COUNTY ENGINEER BY TELEPHONE, MAIL OR BY MAIL, AT LEAST TWENTY-FOUR HOURS BEFORE STARTING ANY WORK UNDER THIS CONTRACT.
  7. MANHOLES SHALL BE BRICK SEWER STRUCTURES PER S-3 - PRECAST CONCRETE MANHOLES PER S-5 OR S-6 MAY BE USED AS AN ALTERNATE IN LOCATIONS APPROVED BY THE COUNTY ENGINEER.
  8. USE STANDARD MANHOLE FRAMES AND COVERS, S-15, EXCEPT AS NOTED.
  9. MANHOLE TOPS IN UNAPPROVED AREAS OF WAY TO BE SIX INCHES ABOVE FINISHED GRADE.
  10. USE EXTRA STRENGTH PIPE, ALL PIPE IS STANDARD DEPTH EXCEPT AS NOTED.
  11. USE GUNNED ARCADAS OR MECHANICAL COMPRESSION JOINTS FOR ALL V.C.P. JOINTS PER SPEC'S, SECT. 30, 4, § 149.
  12. WHERE STEEL BRIDGING IS ENCOUNTERED DURING THE CONSTRUCTION OF THE SEWER, THE V.C.P. JOINTS SHALL BE OF ANGLE COMPENSATED PER SPEC'S, SECT. 30, 4, § 149, OR MECHANICAL COMPRESSION JOINTS PER SPEC'S, SECT. 30, 4, § 149.
  13. IF A POWER POLE IS WITHIN THREE FEET OF THE SEWER, THE SEWER SHALL BE ENCASED PER S-25, TWO FEET ON EITHER SIDE FROM THE POINT OF INTERFERENCE.
  14. IF DURING THE COURSE OF CONSTRUCTION IT IS DETERMINED THAT THERE IS LESS THAN FOUR FEET OF COVER OVER THE TOP OF A MAIN LINE OR HOUSE LATERAL V.C.P. SEWER WHICH IS NOT INDICATED ON THE PLANS, THE PIPE SHALL BE ENCASED PER S-25 UNLESS OTHERWISE APPROVED BY THE COUNTY ENGINEER.
  15. HOUSE LATERALS TO BE CONSTRUCTED WITH INVERTS AT PROPERTY LINE... MUST SHOW CURB GRADE EXCEPT AS NOTED.
  16. REINFORCE ALL TRENCHES WITHIN DRIVEWAYS TO MEET L.A. COUNTY ROAD DEPT. OR CALIFORNIA STATE HIGHWAY REQUIREMENTS BY ACCORDANCE WITH PERMITS.
  17. FOR ALLOWABLE DEVIATIONS USE FORMULA NO. 1000, SPEC. 54.
  18. ALL STATE AND LOCAL TRENCH SAFETY ORDERS WILL BE RIGIDLY ENFORCED.
  19. CONSTRUCTION IN FILLED AREAS
    - (A) AN ACCEPTABLE CERTIFICATION OF COMPACTION TEST RESULTS SHALL BE SUBMITTED TO THE CONSTRUCTION DIVISION. COMPACTION TESTS ARE TO BE MADE IN ACCORDANCE WITH A.S.T.M. STANDARD METHOD OF TEST D 938 - 45 T.
    - (B) NO CONSTRUCTION IS PERMITTED IN FILLED AREAS WHERE THE RELATIVE DENSITY OF COMPACTION IS LESS THAN 80%.
    - (C) IF THE RELATIVE DENSITY OF COMPACTION IS LESS THAN 90%, ALL MAIN LINE AND HOUSE LATERALS SHALL BE CRADLED PER S-23 OR HAVE A SPECIAL BASE COURSE PER S-21, CASE III. SPECIAL MANHOLE BASES PER S-18 ARE REQUIRED.
    - (D) IF THE RELATIVE DENSITY OF COMPACTION IS 90% OR GREATER, THE SPECIAL PROVISIONS IN (C) ARE NOT REQUIRED.

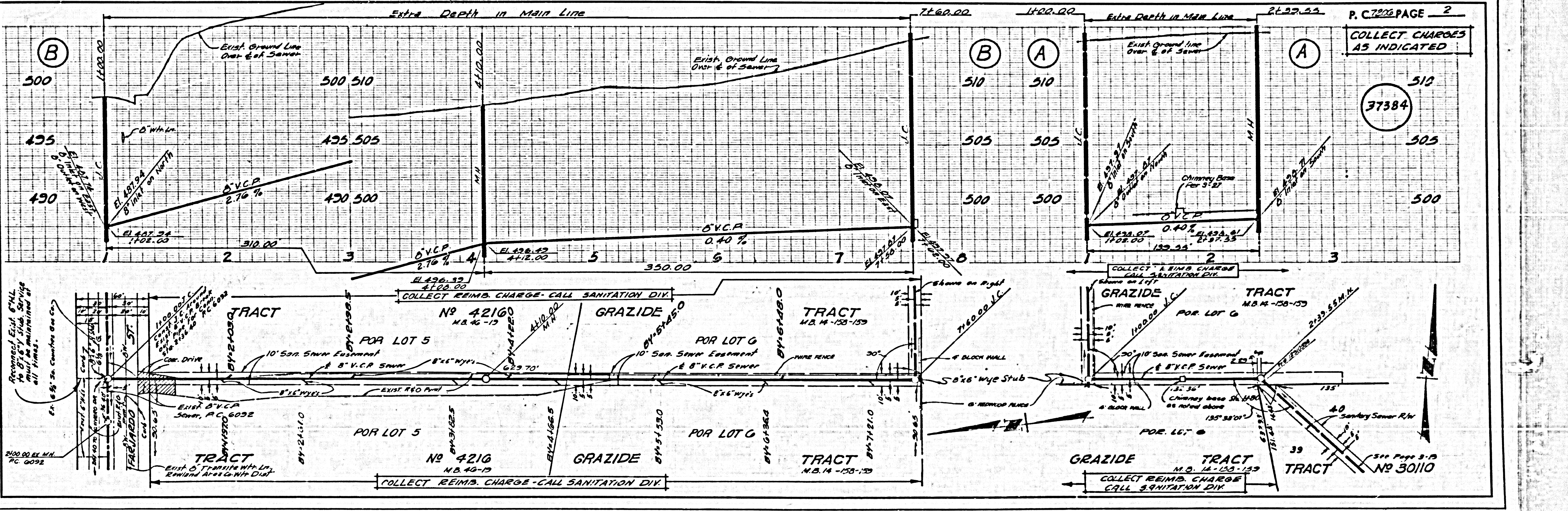
COLLECT CHARGES AS INDICATED  
 P.C. 7206 4-15-65

TRACT NO 30110 37383  
 PRIVATE CONTRACT NO. 7206

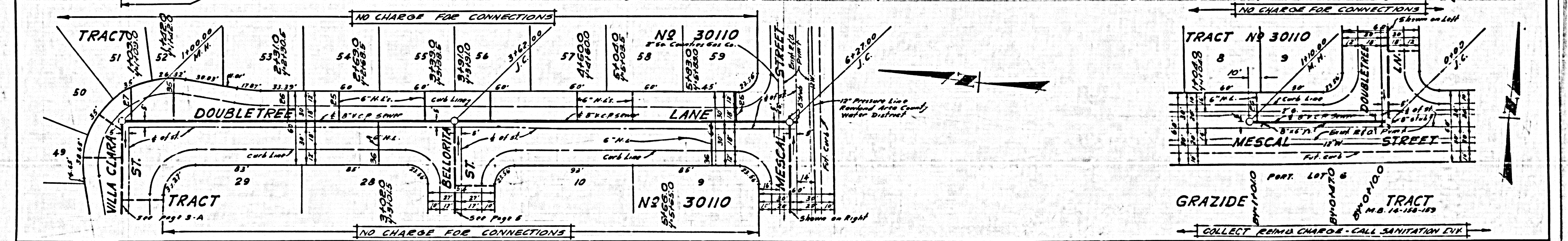
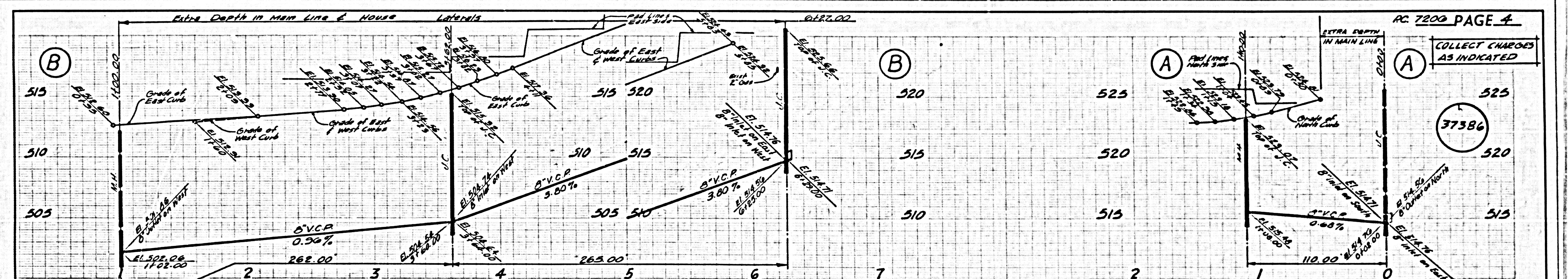
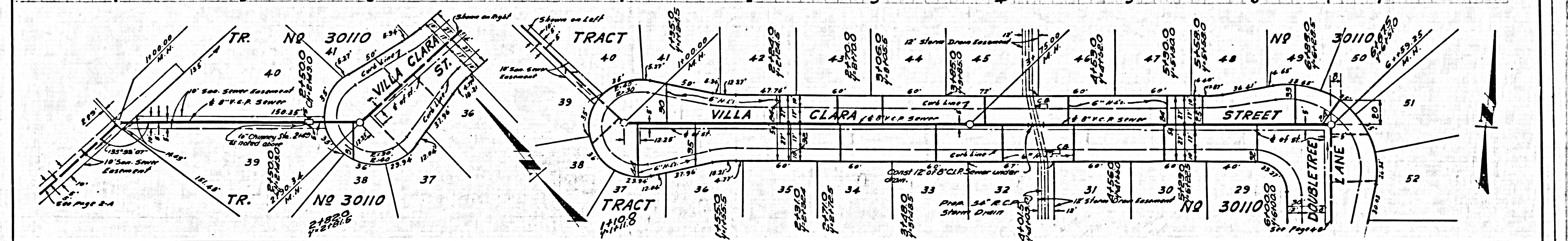
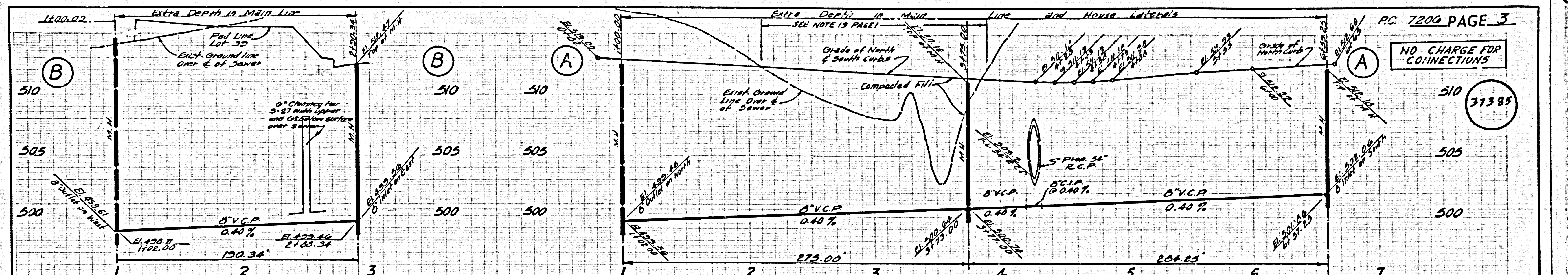
W.S. 30  
 3 SHEETS, 6 PAGES  
 SCALE: 1" = 10' FEBRUARY, 1965  
 PREPARED IN THE OFFICES OF  
**KEMMEYER ENGR. CO. INC.**  
 145 NO. FAUNTER AVE., WHITTIER, CALIF.  
 BY Robert R. Flores  
 REG. C. E. NO. 11349  
 FOR LEGEND SEE PLAN NO. S-1

NOTES:  
 GRADES TO WHICH THIS IMPROVEMENT IS TO BE CONSTRUCTED ARE SHOWN ON PLANS AND PROFILES. GRADES FOR TOP OF CURB, CENTER LINE OF STREETS, OR CENTER LINE OF ALLEYS SHOWN BY CIRCLES ON PROFILES. AT ALL POINTS BETWEEN DESIGNATED POINTS THE GRADE SHALL BE ESTABLISHED SO AS TO CONFORM TO A STRAIGHT LINE DRAWN BETWEEN SAID DESIGNATED POINTS. ELEVATIONS ARE IN FEET ABOVE U.S.C. & G.S. SEA LEVEL DATUM OF 1929.  
 THIS DRAWING AND THE DATA HEREON ARE HEREBY MADE A PART OF THE SPECIFICATIONS.  
 WORK SHALL BE CONSTRUCTED ACCORDING TO STANDARD SPECIFICATIONS RATED JAN. 23, 1962, ON FILE IN THE OFFICE OF THE COUNTY ENGINEER AND SHALL BE PROSECUTED ONLY IN THE PRESENCE OF THE COUNTY ENGINEER.  
 BEFORE WORK CAN BE STARTED, THE CONTRACTOR MUST OBTAIN A PERMIT TO EXCAVATE IN COUNTY SHEETS FROM THE L.A. COUNTY ROAD DEPT., DISTRICT OFFICE NO. 1111, AND PAY A FEE TO THE COUNTY ENGINEER, ROOM 320, COUNTY ENGINEERING BUILDING, 100 WEST SECOND STREET, LOS ANGELES, CALIF. \$100.00. REGIONAL OFFICE, IMPACT TO COVER THE COST OF CONSTRUCTION INSPECTION AND RECORD PLANS.  
 APPROVAL OF THIS PLAN BY THE COUNTY OF LOS ANGELES DOES NOT CONSTITUTE A REPRESENTATION AS TO THE ACCURACY OF THE LOCATION OF OR THE EXISTENCE OR NON-EXISTENCE OF ANY UNDERGROUND UTILITY PIPE, OR STRUCTURE WITHIN THE LIMITS OF THE PROJECT. THIS NOTE APPLIES TO ALL PAGES.  
 IF WORK IS TO BE DONE IN A STATE HIGHWAY, A PERMIT MUST BE OBTAINED FROM THE STATE OF CALIFORNIA, DIVISION OF HIGHWAYS, 120 SOUTH BRIDGE STREET, LOS ANGELES, CALIFORNIA.

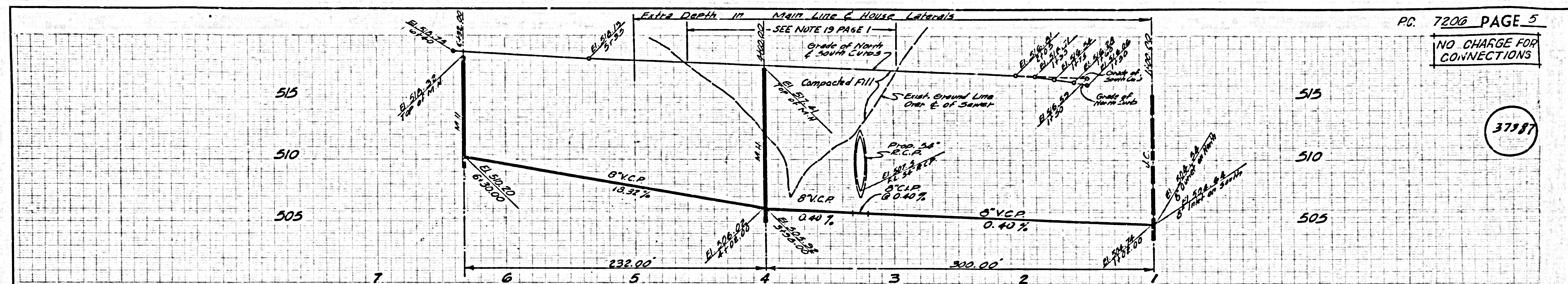
COUNTY OF LOS ANGELES, CALIFORNIA  
 JOHN A. LAMBIE, COUNTY ENGINEER J. D. PARKHURST, CHIEF ENGINEER  
 CO. SEAL NO. 12121  
 APPROVED BY Robert R. Flores APPROVED BY J. D. Parkhurst  
 ASSISTANT SANITATION ENGINEER OFFICE ENGINEER  
 SUBMITTED BY Halo W. Kugel 4-20-65  
 SANITATION ENGINEER  
 CIRCLED BY Robert R. Flores 4-20-65  
 REG. C.E. NO. 11349  
 J.N. 0364.05





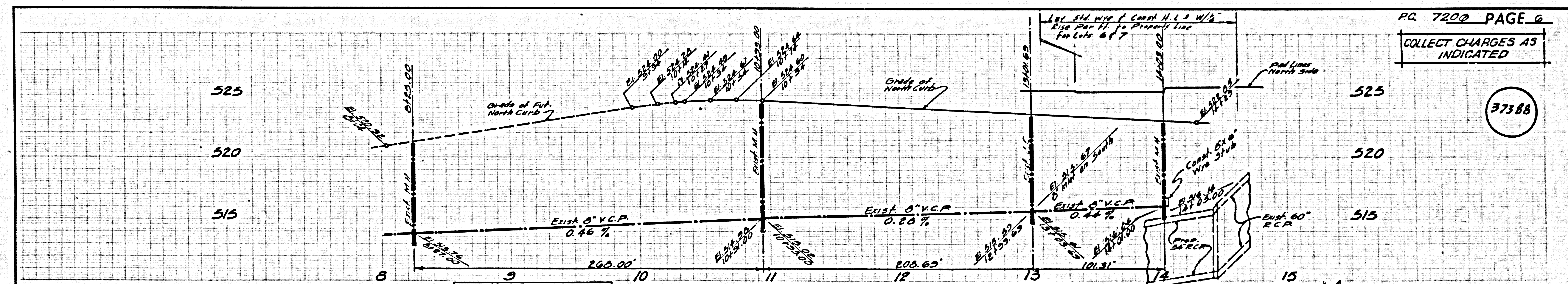
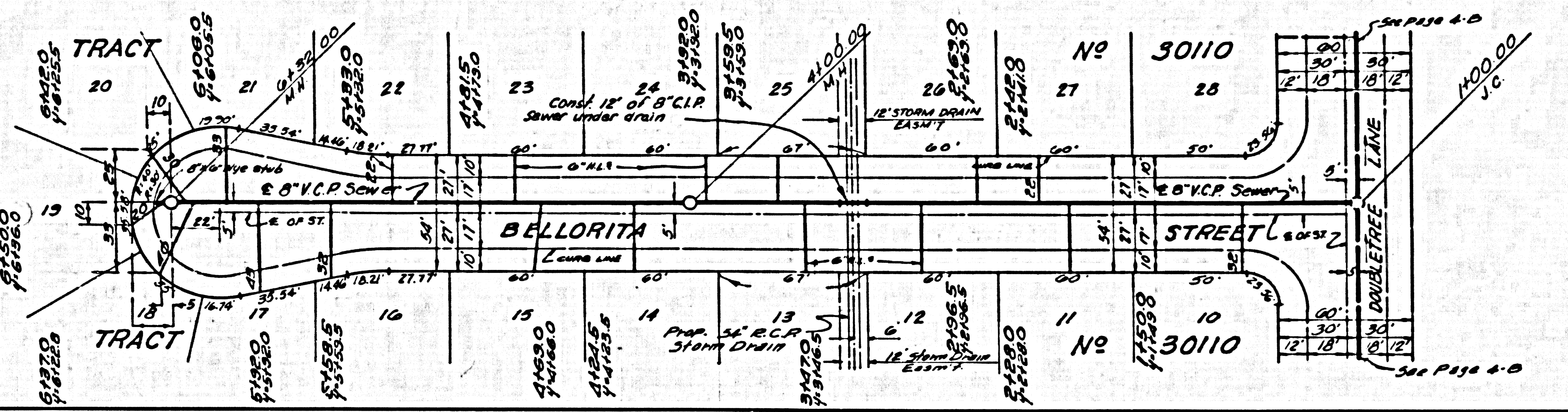






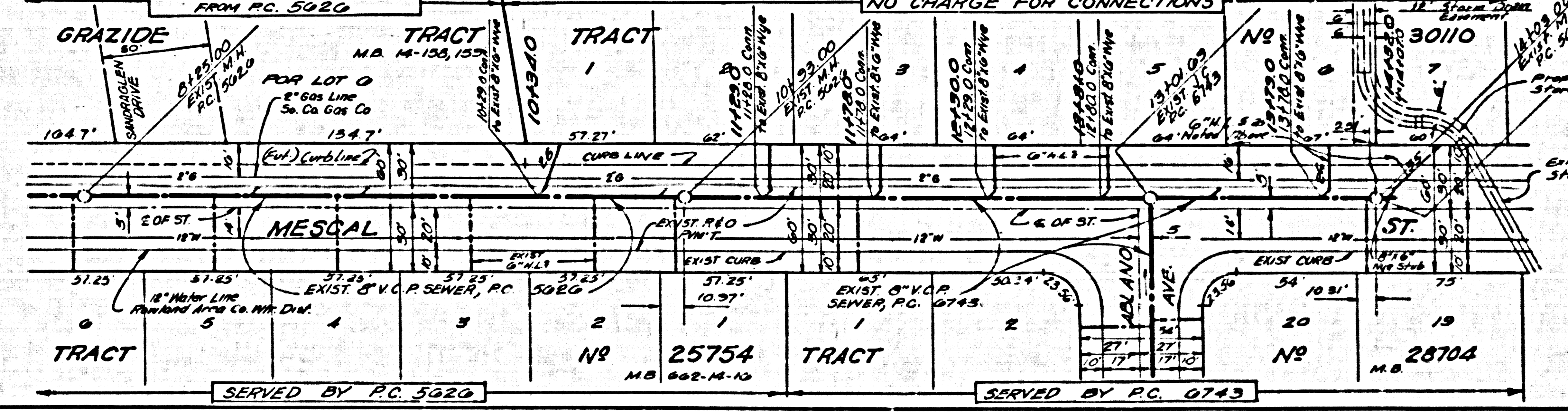
PC 7206 PAGE 5  
NO CHARGE FOR CONNECTIONS

37587



PC 7206 PAGE 6  
COLLECT CHARGES AS INDICATED

37588



POST-59 010E 9W 13ART