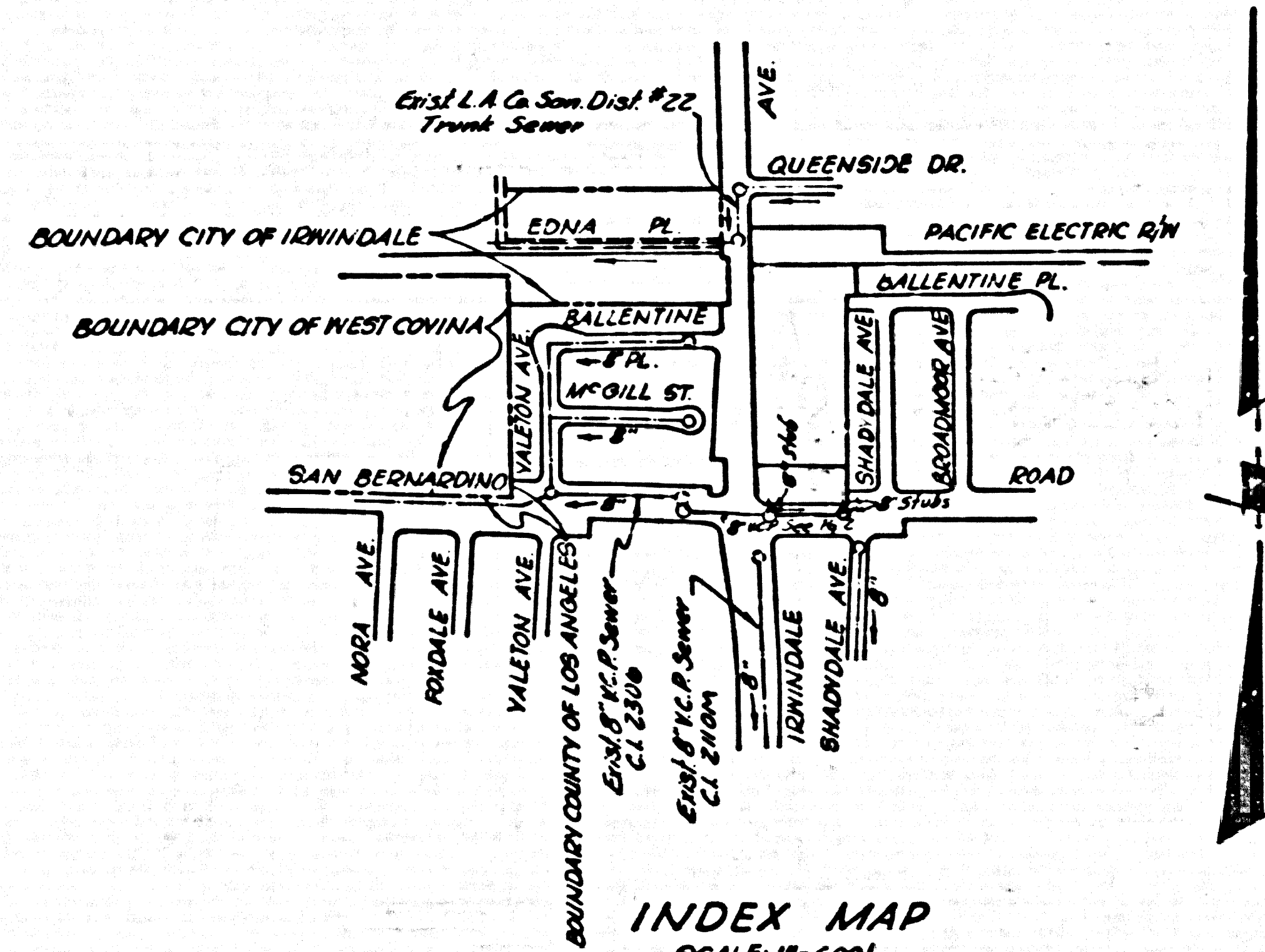


B.M. 16-3A. ELEV. 418.000
 IRWINDALE AVE @ SAN BERNARDINO RD.
 1/4" = 100' (Scale of map of 1/4" = 100' of
 Irwindale, a County Engineers' Survey
 Map No. 16-3A, R.E. 5869, 1965 in
 Book of Traffic Signs)
 QUAD. 19 63 Adj.



SAN DIMAS BLDG. DIST. NO. 10

- NOTES:
1. PROVIDE STAKES ON THE PROPERTY LINE OR PROPERTY LINES PRO VACATED AT RIGHT ANGLES TO THE SEWER LINE AT THE CENTER LINE OF EACH MANHOLE.
 2. NO REPRESENTATIVE OF THE COUNTY ENGINEER WILL SURVEY OR LAY OUT ANY PORTION OF THE WORK.
 3. THE PRIVATE ENGINEER SHALL FURNISH THE COUNTY ENGINEER WITH GRADE SHEETS AND STATIONING FOR ALL HOUSE LATERALS AND Y BRANCHES AND SHALL PROVIDE STAKES FOR THEM AT THREE PROPER LOCATIONS WITH STATIONING PLAINLY MARKED. ALL HOUSE LATERALS SHALL BE CONSTRUCTED IN A STRAIGHT ALIGNMENT AT RIGHT ANGLES FROM THE MAIN LINE SEWER UNLESS OTHERWISE SPECIFIED. ANY CHANGE IN ALIGNMENT SHALL BE SPECIFIED IN WRITING BY THE PRIVATE ENGINEER.
 4. THE PRIVATE ENGINEER SHALL FURNISH THE HOUSE LATERAL DEPTH AT THE PROPERTY LINE BELOW THE TOP OF CURB ELEVATION FOR EACH HOUSE LATERAL ON THE GRADE SHEET.
 5. NO REVISIONS SHALL BE MADE IN THESE PLANS WITHOUT THE APPROVAL OF THE COUNTY ENGINEER.
 6. THE CONTRACTOR SHALL NOTIFY THE CONSTRUCTION DIVISION BY TELEPHONE, MADISON 9-242, EXT. 8251, AT LEAST TWENTY-FOUR HOURS BEFORE STARTING ANY WORK UNDER THIS CONTRACT.
 7. MANHOLES SHALL BE BRICK SEWER STRUCTURES PER S-3; PRECAST CONCRETE MANHOLES PER S-3 OR S-6 MAY BE USED AS AN ALTERNATE IN LOCATIONS APPROVED BY THE COUNTY ENGINEER.
 8. 8" STANDARD MANHOLE RINGS AND COVERS, S-1/8.
 9. MANHOLE TOPS IN IMPROVED AREAS OR WAYS TO BE LEVEL WITH FINISHED GRADE.
 10. USE EXTRA STRENGTH PIPE, ALL PIPE IS STANDARD BOTH UNLESS OTHERWISE SPECIFIED.
 11. USE STANDARD MECHANICAL CONNECTION JOINTS FOR ALL V.C.P. JOINTS PER SPEC. SEC. 34, 4, 849.
 12. SCHEDULE 40 STEEL PIPE SHALL BE USED FOR ALL V.C.P. JOINTS PER SPEC. SEC. 34, 4, 849.
 13. IF A POWER POLE IS WITHIN THREE FEET OF THE SEWER, THE SEWER SHALL BE ENCASED, PER S-23 TWO FEET ON EITHER SIDE FROM THE POINT OF INTERFERENCE.
 14. DURING THE COURSE OF CONSTRUCTION IT IS DETERMINED THAT THERE IS LESS THAN FOUR FEET OF COVER OVER THE TOP OF A MAIN LINE OR HOUSE LATERAL V.C.P. SEWER WHICH IS NOT INDICATED ON THE PLANS, THE PIPE SHALL BE ENCASED PER S-23 UNLESS OTHERWISE APPROVED BY THE COUNTY ENGINEER.
 15. HOUSE LATERALS TO BE CONSTRUCTED WITH INVERTS AT PROPERTY LINE ... FEET BELOW CURB GRADE UNLESS OTHERWISE SPECIFIED IN ACCORDANCE WITH PERMITS.
 16. FOR MAINTENANCE LEAKAGE TEST USE FORMULA NO. ... PER SPEC. SEC. 34.
 17. ALL STATE AND LOCAL TRAVEL SAFETY DEVICES SHALL BE PROUDLY EMPLOYED.

CONTRACTOR TO NOTIFY MR. ROBERT POWELL OF SANITATION DISTRICTS, BY TELEPHONE, NE 6-3037 PRIOR TO COMMENCING CONSTRUCTION.

COLLECT CHARGES AS INDICATED
John P. ... 11-5-65

APPROVED:
James A. ... 11-8-65
 Industrial Waste Division
 Department of County Engineer
 County of Los Angeles

CONSTRUCTED IN
TRACT No. 29490

PRIVATE CONTRACT NO. 7209

W.S. 47
 SHEETS: 2 PAGES
 SCALE: VERT. 1"=4' HORIZ. 1"=40' NOV. 1964 38079

PREPARED IN THE OFFICES OF
HAROLD L. JOHNSON ENGINEERING

BY *Harold L. Johnson*
 REG. C. E. NO. 7608

FOR LEGEND SEE PLAN NO. S-1

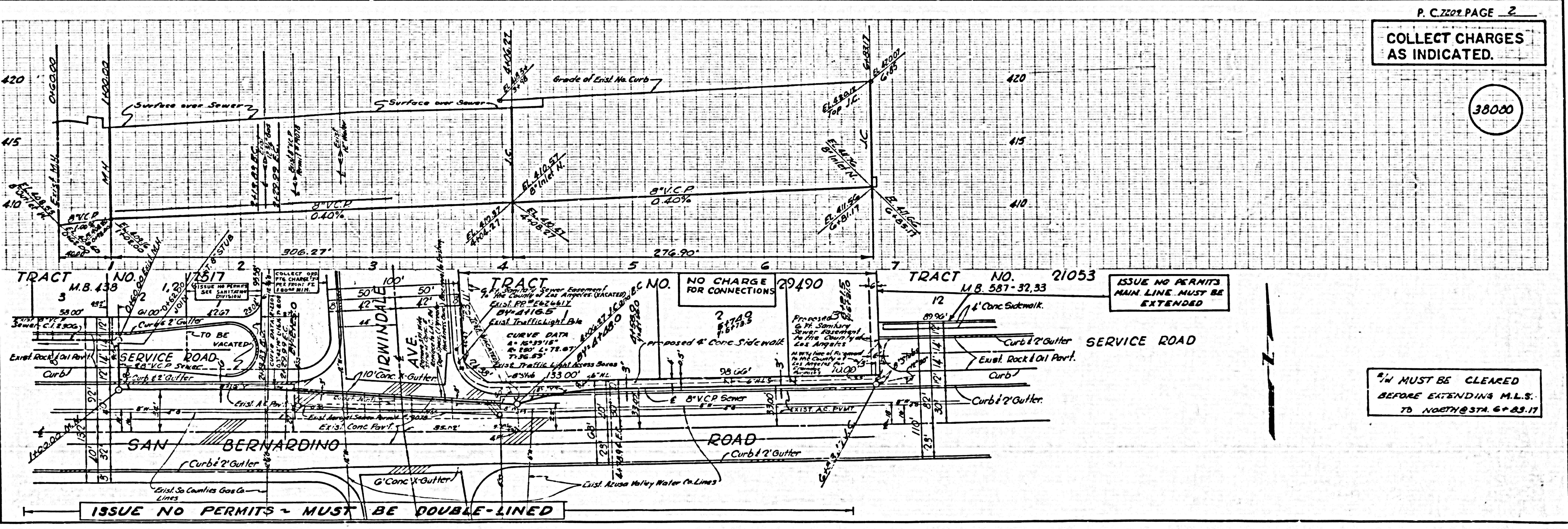
NOTES:
 GRADES TO WHICH THIS IMPROVEMENT IS TO BE CONSTRUCTED ARE SHOWN ON PLANS AND PROFILES. GRADE POINTS FOR TOP OF CURBS, CENTER LINE OF STREETS, OR CENTER LINE OF ALLEYS ARE SHOWN BY CIRCLES ON PROFILES. AT ALL POINTS BETWEEN DESIGNATED ELEVATIONS ARE IN FEET ABOVE U.S.C. & G.S. SEA LEVEL, DATUM OF 1929.
 THIS DRAWING AND THE DATA HEREON ARE HEREBY MADE A PART OF THE SPECIFICATIONS.
 BEFORE WORK CAN BE STARTED, THE CONTRACTOR MUST OBTAIN A PERMIT TO EXCAVATE IN COUNTY STREETS FROM THE L.A. COUNTY ROAD DEPT., DISTRICT OFFICE 10, ... AND PAY A FEE TO THE COUNTY ENGINEER, ROOM 300, COUNTY ENGINEERING BUILDING, 100 WEST SECOND STREET, SAN DIMAS, ... SUFFICIENT TO COVER THE COST OF CONSTRUCTION INSPECTION AND RECORD PLANS.
 APPROVAL OF THIS PLAN BY THE COUNTY OF LOS ANGELES DOES NOT CONSTITUTE A REPRESENTATION AS TO THE ACCURACY OF THE LOCATION OF OR THE EXISTENCE OR NON-EXISTENCE OF ANY UNDERGROUND UTILITY PIPE, OR STRUCTURE WITHIN THE LIMITS OF THIS PROJECT. THIS NOTE APPLIES TO ALL PLANS BY THE COUNTY OF LOS ANGELES. A PERMIT MUST BE OBTAINED FROM THE STATE OF CALIFORNIA, DIVISION OF HIGHWAYS, 120 SOUTH SPRING STREET, LOS ANGELES, CALIFORNIA.

COUNTY OF LOS ANGELES, CALIFORNIA
 JOHN A. LAMBIE, COUNTY ENGINEER
 I. D. PARKHURST, CHIEF ENGINEER
 CO. ENR. NO. 10-22

APPROVED BY *Robert S. ...* ASSISTANT SANITATION ENGINEER
 APPROVED BY *Harold L. Johnson* OFFICE ENGINEER

SUBMITTED BY *Harold L. Johnson* SAN DIMAS
 CHECKED BY *James A. ...* 11-10-65

REVISED TO EXTEND SEWER TO STA. 6+83.17 AND SHOW G.P.E. SANITARY SEWER EASEMENT ON EAST SIDE LOT 2, TRACT NO. 29490, M.B. 799-8709.
 Approved *James A. ...* 12-1-66 J.N. 0384.68
 P.C.E. NO. 10443



COLLECT CHARGES AS INDICATED.

38000

ISSUE NO PERMITS MAIN LINE MUST BE EXTENDED

4" MUST BE CLEARED BEFORE EXTENDING M.L.S. TO NORTH @ STA. 6+83.17

ISSUE NO PERMITS - MUST BE DOUBLE-LINED