

CITY	STATE	FEDERAL PROJECT NO.	SHEET NO.	TOTAL SHEETS
7	CALIF.			
CITY	COUNTY	ROUTE	SECTION	SHEET NO.
7	LA	210		

Anthony

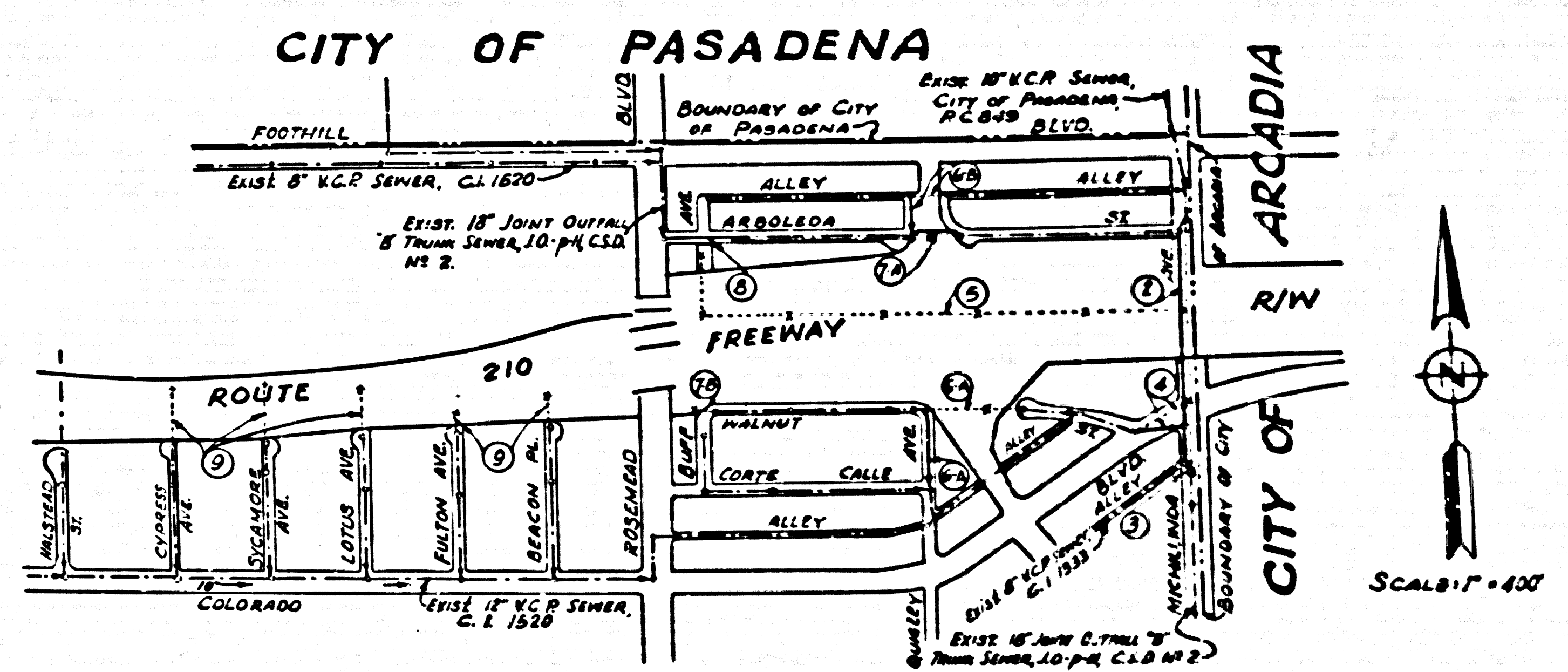
GENERAL NOTES

1. All structures shall be brick sewer structure per Standard No. S-3, except as noted.
2. Use standard manhole frames and covers per Standard No. S-15, except as noted.
3. Contractor shall maintain sewer service at all times during construction.
4. At least 48 hours before starting work on this project, the Resident Engineer shall notify:
The County Engineer, 629-4747, Ext. P-552.
The County Sanitation District, 386-1401.
5. No connections for the disposal of industrial wastes shall be made to sewers shown on these drawings without written permission from the Chief Engineer and General Manager of the County Sanitation District.
6. The Contractor shall deliver 2 salvaged manhole frames and covers to the County Sewer Maintenance Yard, 2849 S. Myrtle Avenue, Irwindale, California.

**PLAN AND PROFILE OF
SANITARY SEWERS
TO BE CONSTRUCTED UNDER
P. C. 7210**

SHEET 1 OF 9 SHEETS
APRIL, 1967
U.S. 44
SCALES: HORIZ. 1" = 50', VERT. 1" = 5'
COUNTY OF LOS ANGELES, CALIFORNIA
APPROVED: JOHN A. LAMBE, COUNTY ENGINEER
BY: *Richard M. Coon*
ASSISTANT DIVISION ENGINEER
SUBMITTED BY: *Robert J. Hubert*
R. E. 1330
APPROVED: JOHN D. PARKHURST, CHIEF ENGINEER
COUNTY SANITATION DISTRICT NO. 2
BY: *J. W. Matthews*
OFFICE ENGINEER

42539



**INDEX MAP
ROUTE 210 FREEWAY
P. C. 7210**

U.S. 44 R: 26, 26A

LEGEND

- SEWERS TO BE ABANDONED
- SEWERS TO BE CONSTRUCTED
- EXISTING SEWERS
- SEWER SHEET NUMBERS

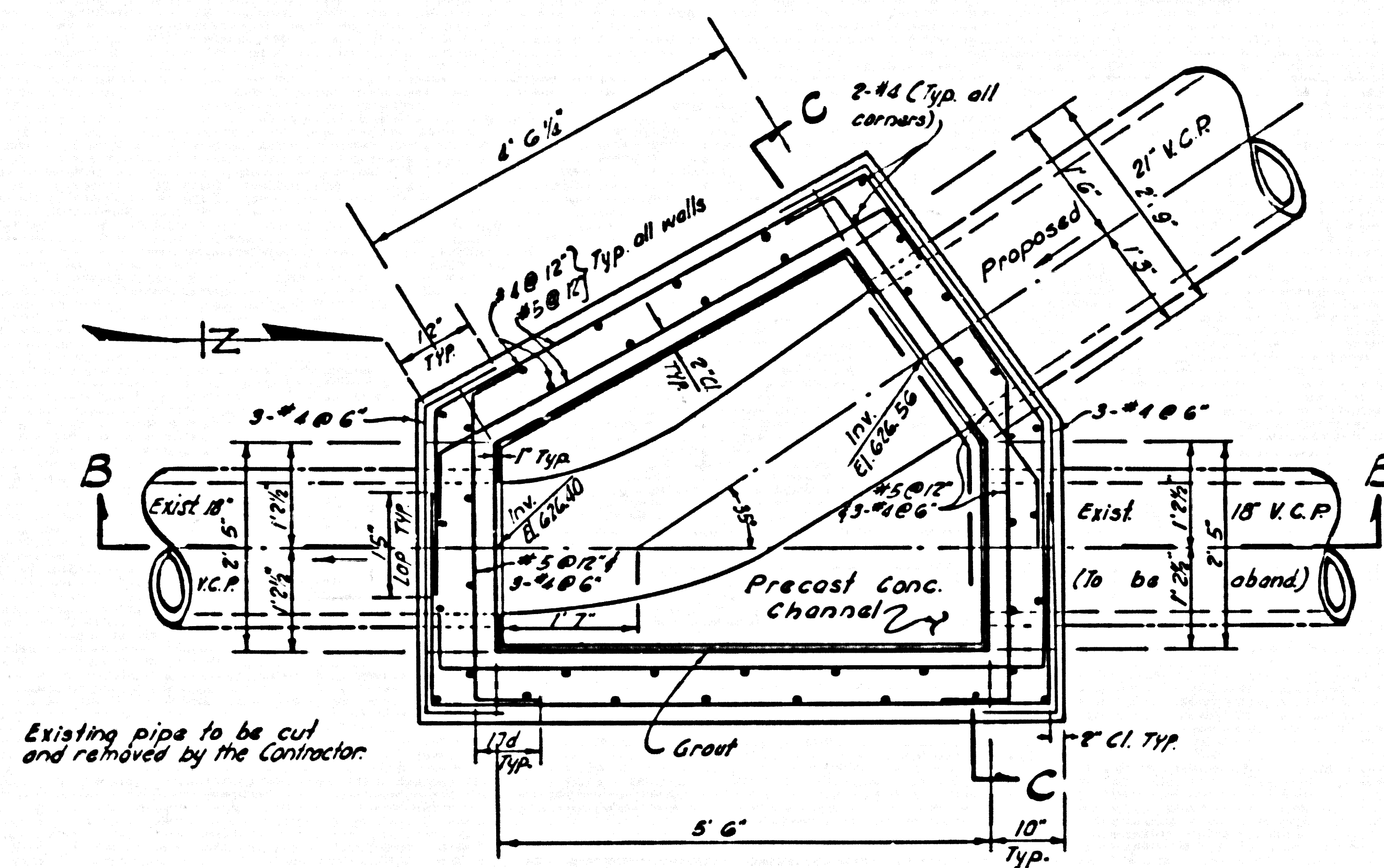
PROJECT ENGINEER	DATE	DESIGN ENGINEER	DATE	APPROVAL RECOMMENDED BY	DATE
<i>Richard M. Coon</i>		<i>M. Reynolds</i>		<i>D. Paul</i>	8/67

STATE	FEDERAL PROJECT NO.	FISCAL YEAR	SHEET NO.	TOTAL SHEETS
CALIF.				

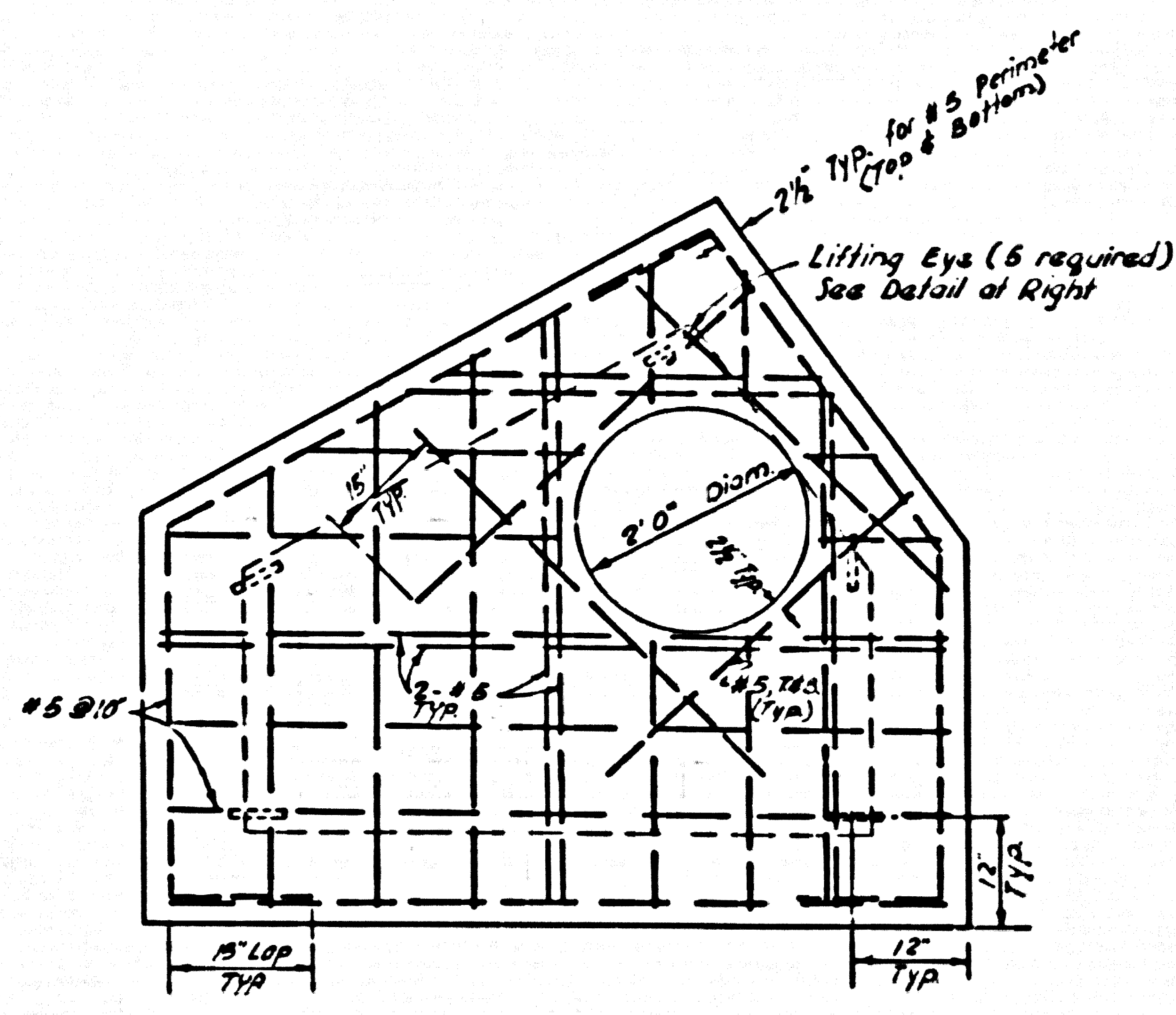
County	Sheet	Division	Scale	Project
VII LA 210			1/4"	

Authey
 ARCHT. ENGINEER

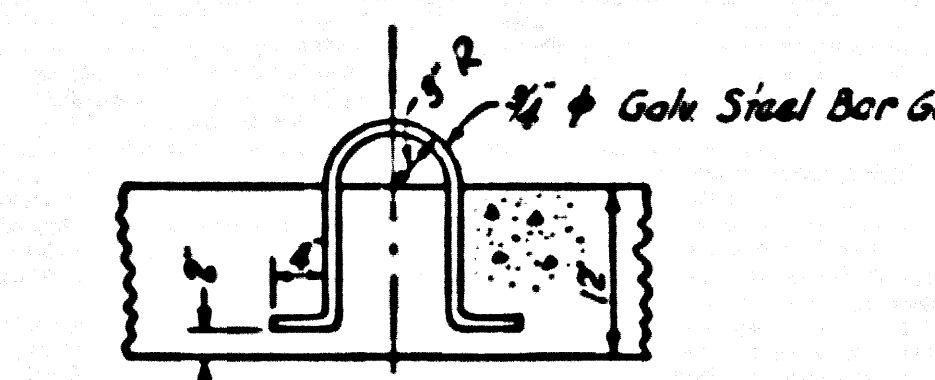
P.C. 7210
 SHEET 3 OF 9 SHEETS



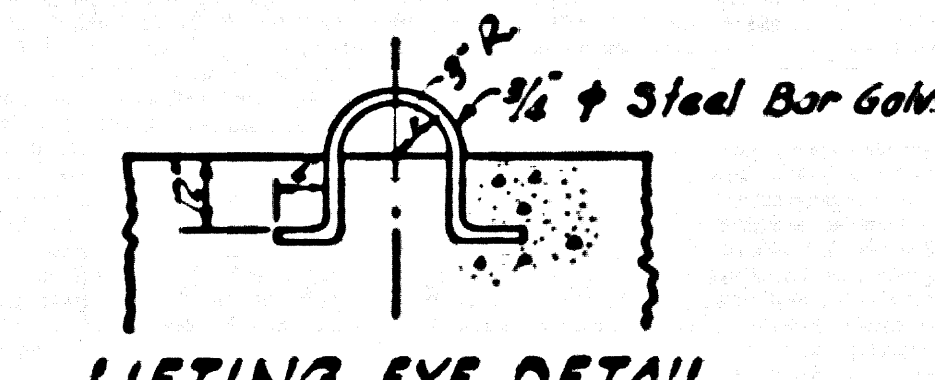
PLAN SECTION A-A



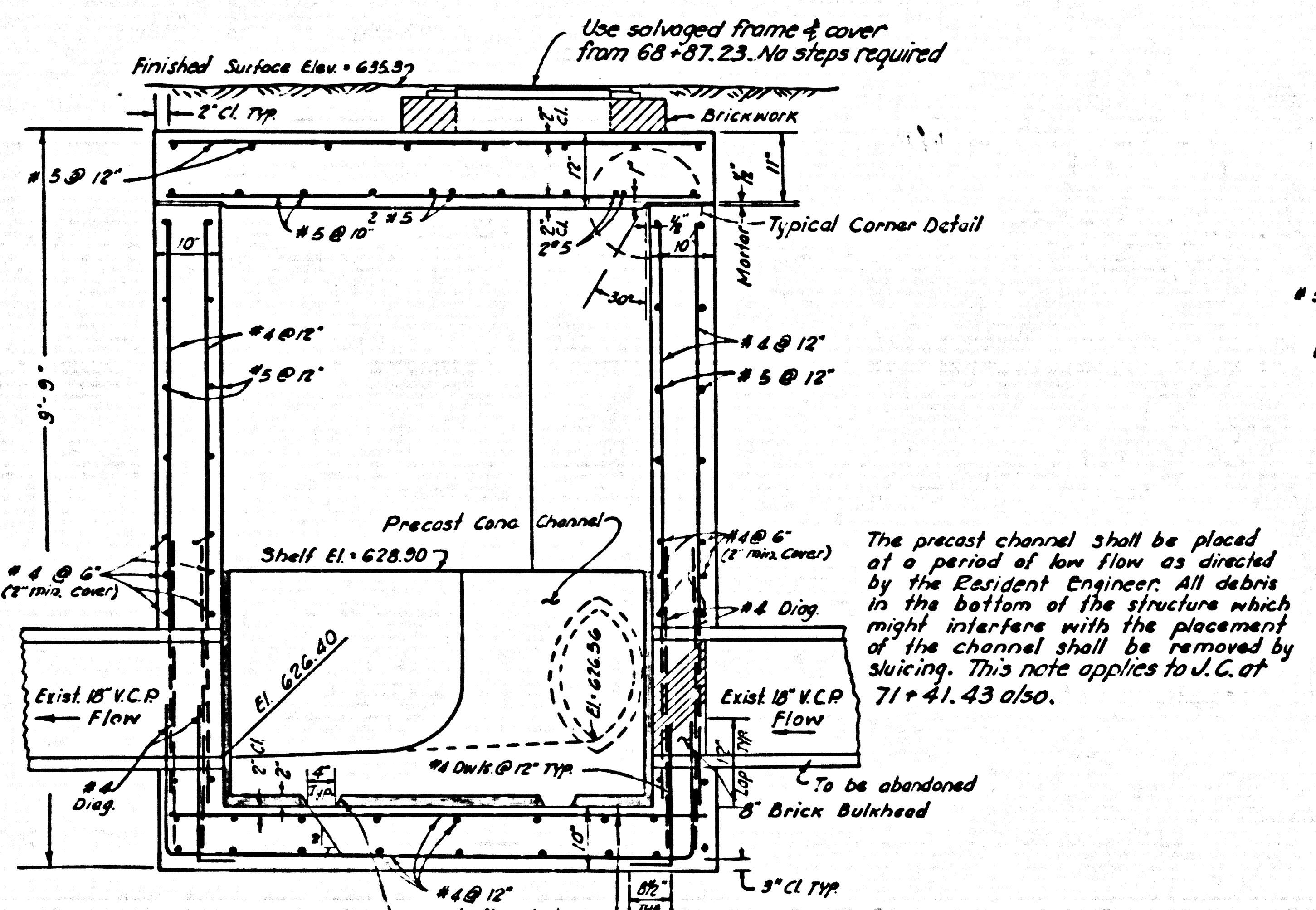
ROOF PLAN



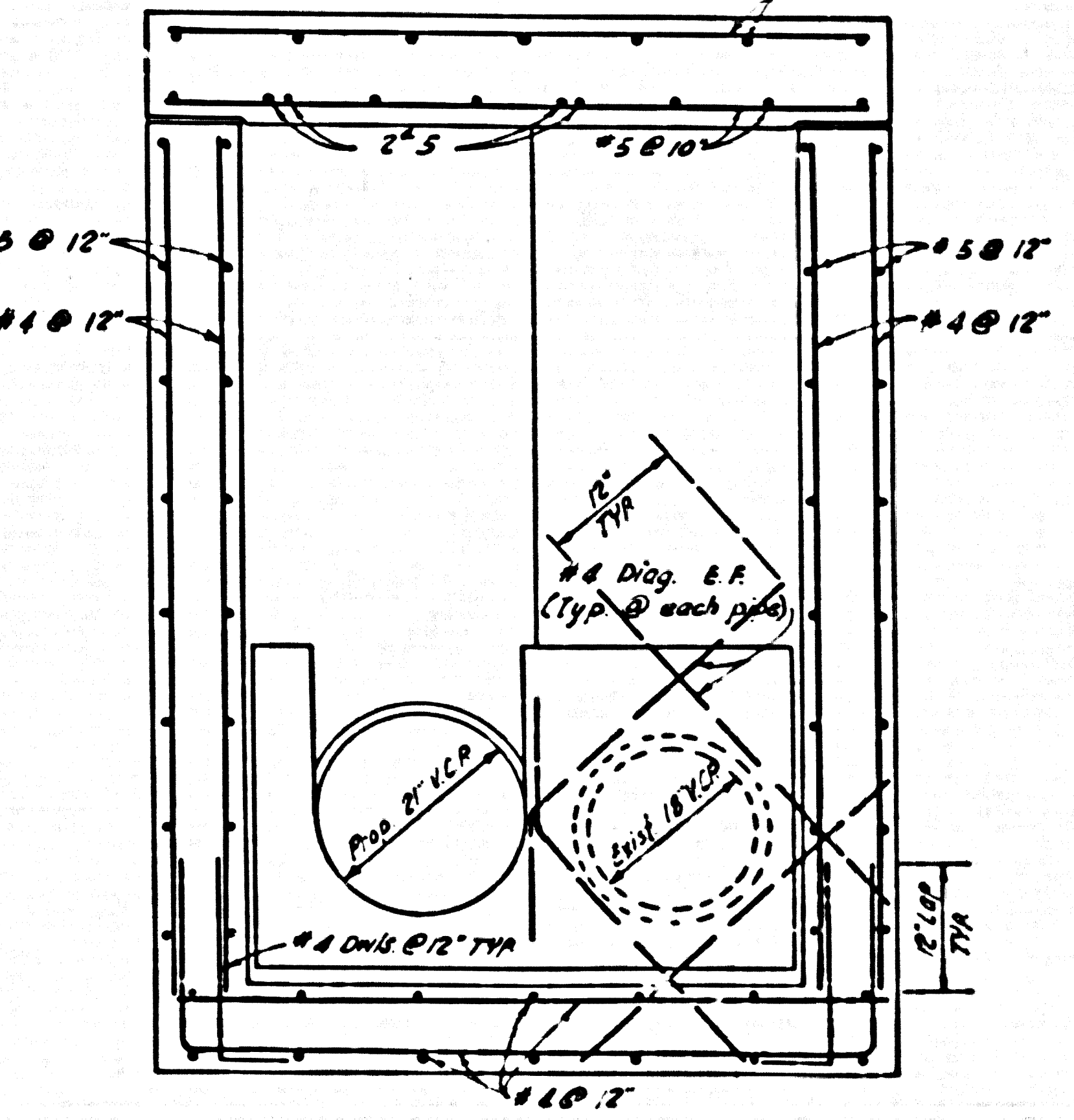
LIFTING EYE DETAIL (ROOF)
 5 Req'd.



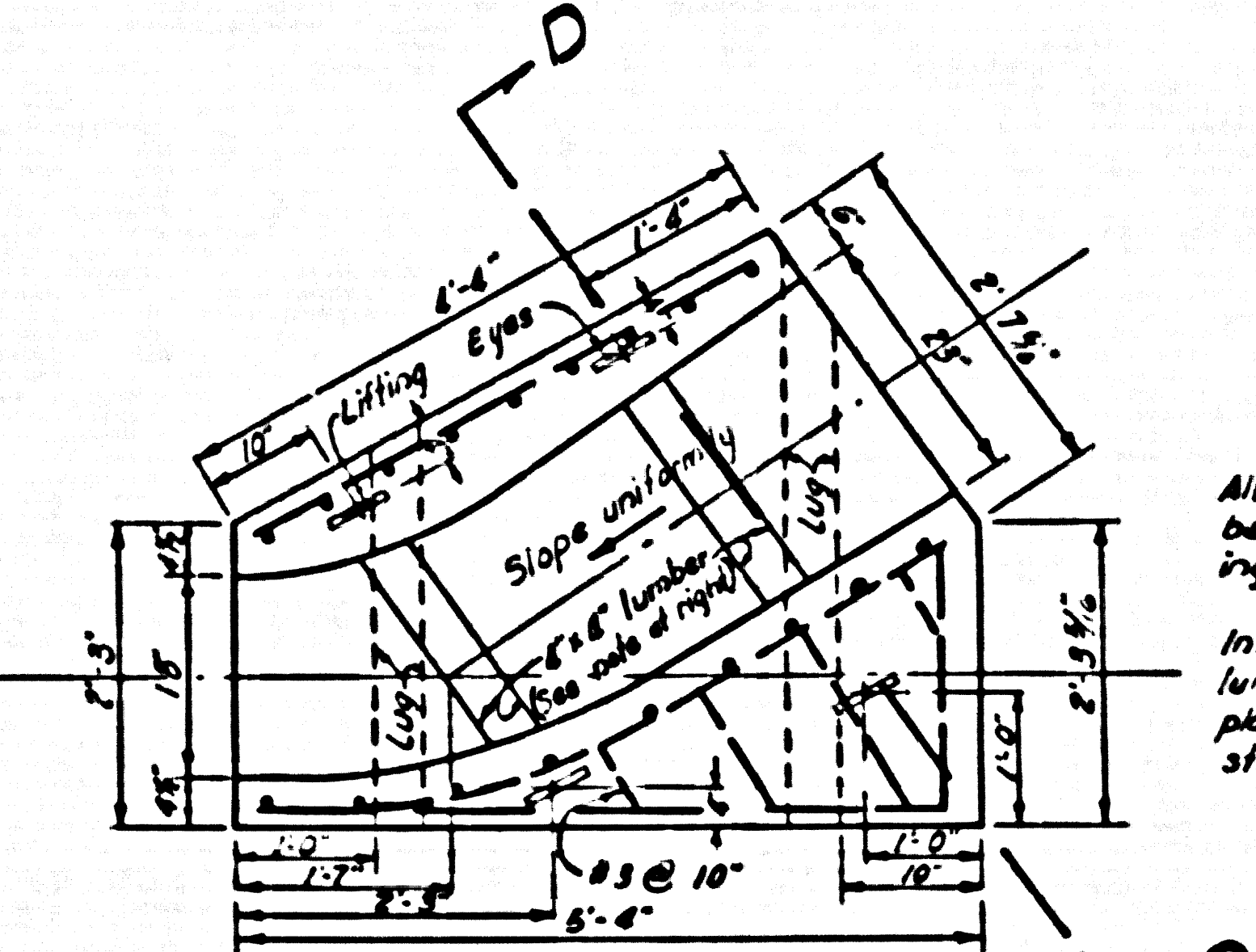
LIFTING EYE DETAIL
 (FOR PRECAST CONC. CHANNEL)
 4 Req'd.



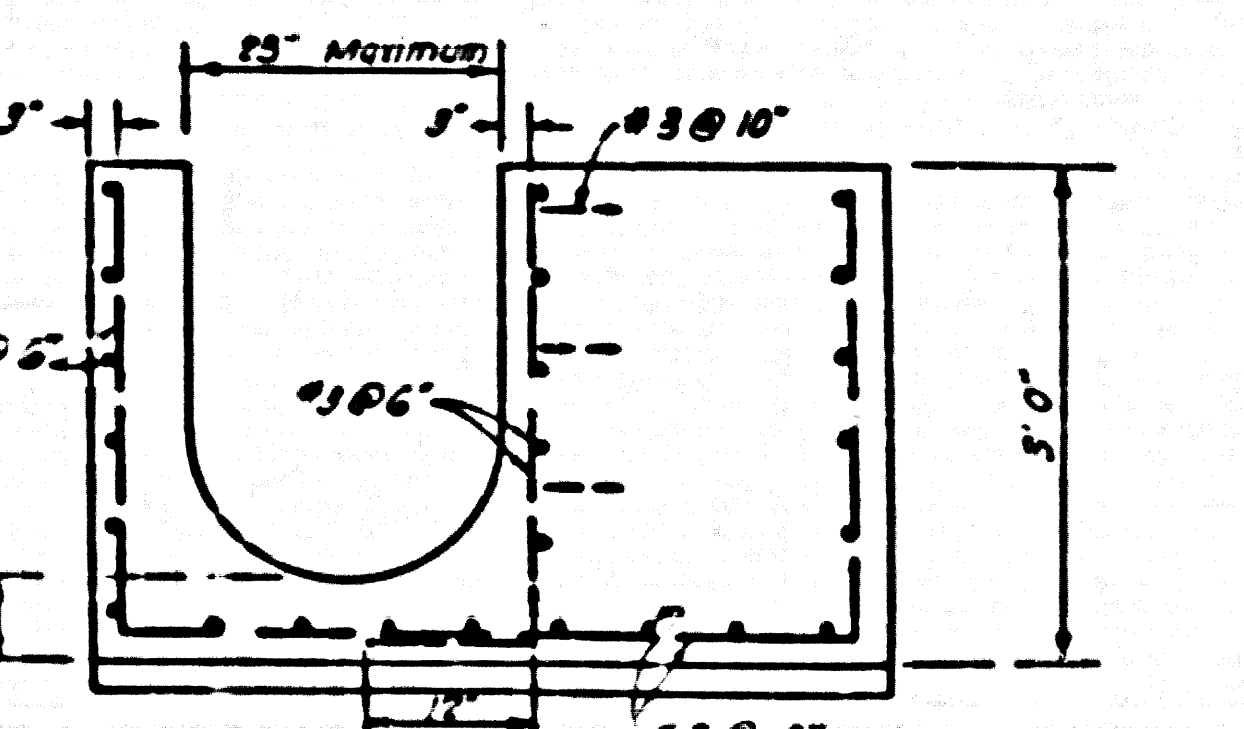
SECTION B-B



SECTION C-C



PRECAST CONCRETE CHANNEL



SECTION D-D

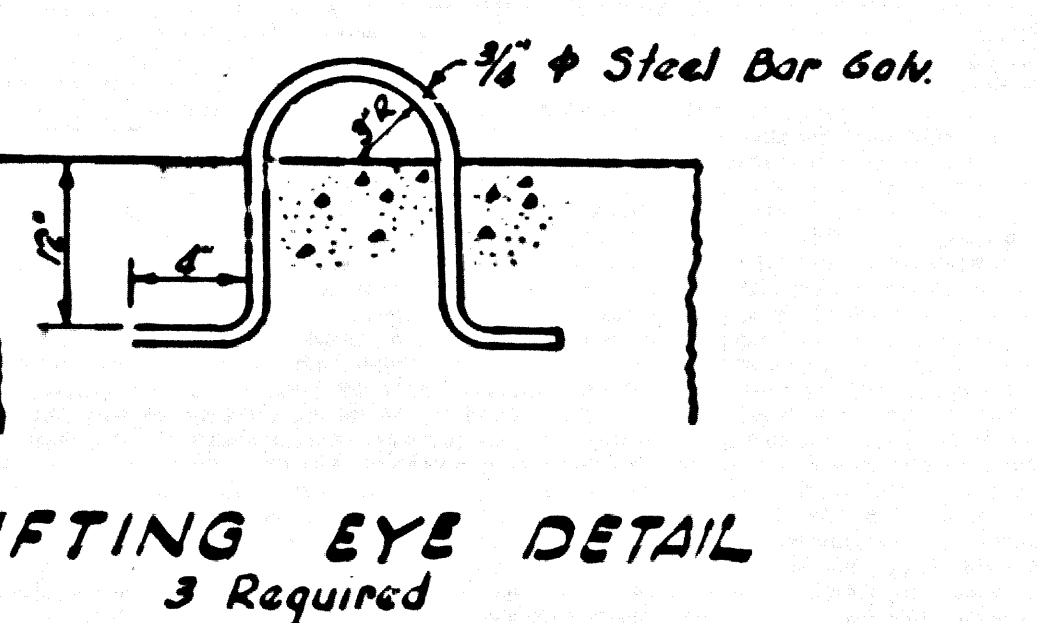
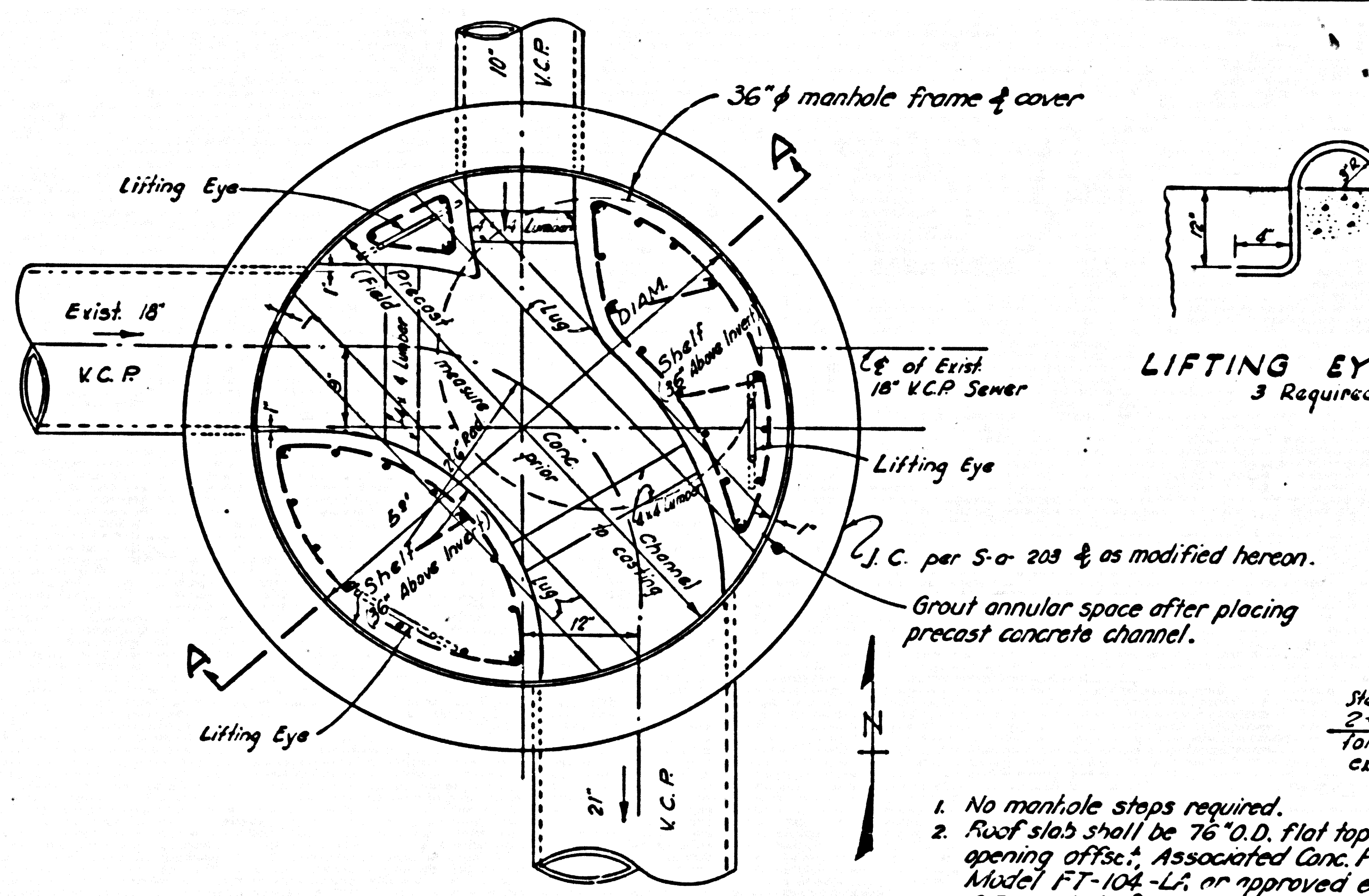
DETAILS OF
 STRUCTURE @ STA. 63+36.13, SHEET 2
 SCALE: 1/4" = 1'-0"

181-12

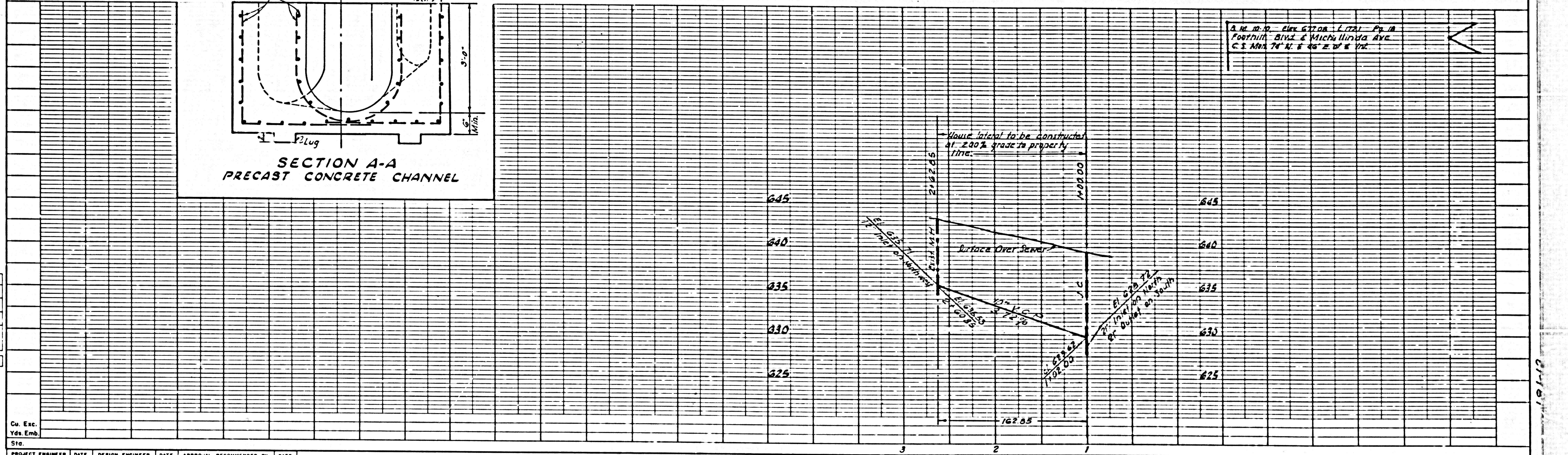
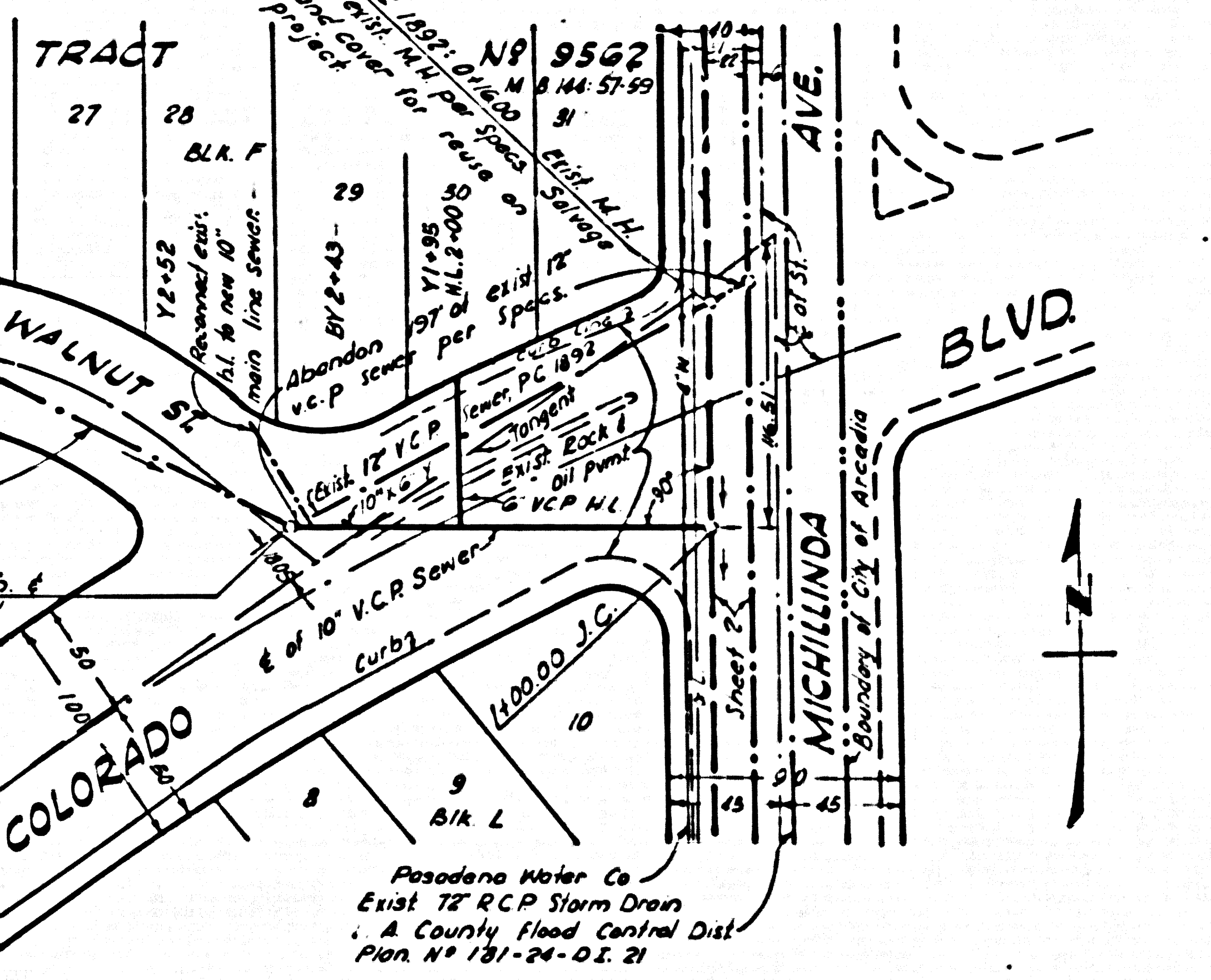
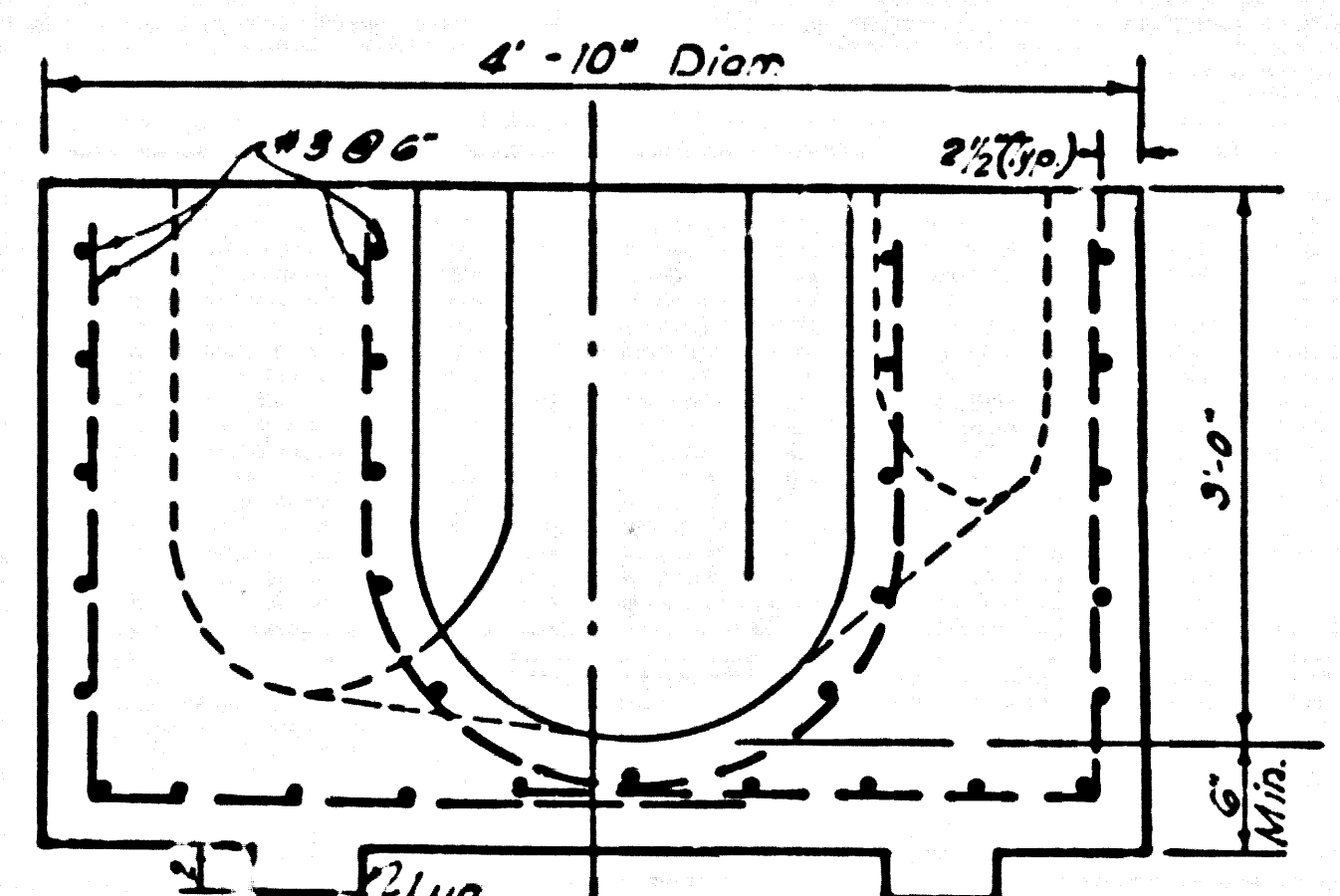
FED. PROJ. NO.	STATE	FEDERAL PROJECT NO.	FISCAL YEAR	SHEET NO.	TOTAL SHEETS
	CALIF.				
VII	LA	210	291-326	199	

Curby
 CURBY & ASSOCIATES
 SAN FRANCISCO, CALIF.

P.C. 7210
 SHEET 4 OF 9 SHEETS



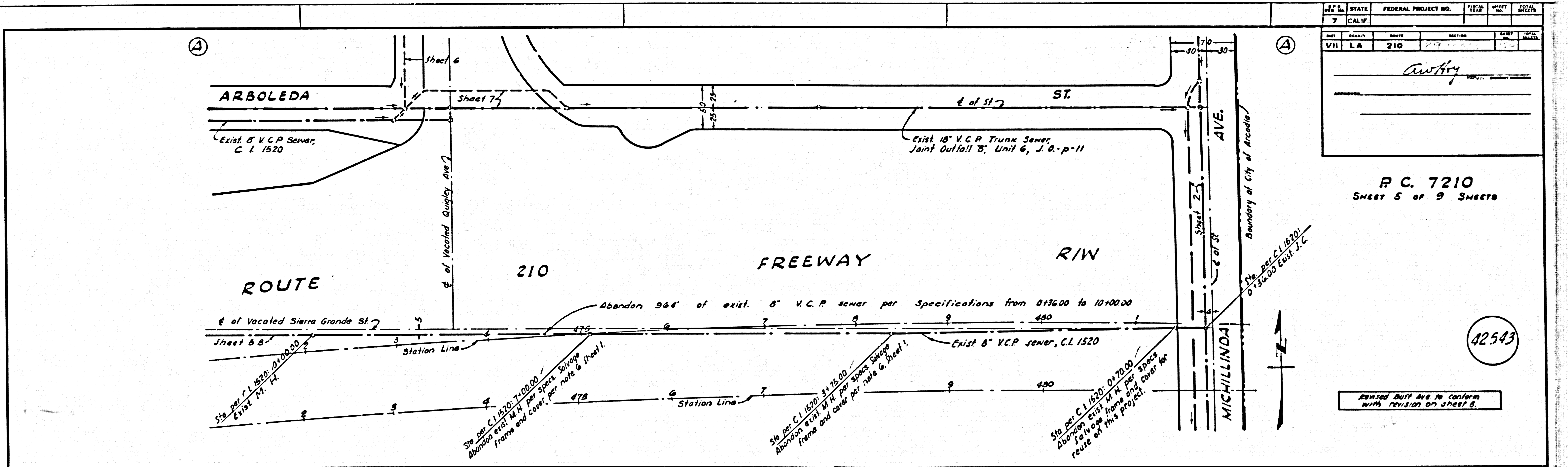
1. No manhole steps required.
2. Roof slab shall be 76" O.D. flat top w/36" opening offset. Associated Conc. Products, Inc. Model FT-104-L1, or approved equal.
3. C.I. manhole frame & cover shall be 36" Alhambra City, A-1074 w/10" inner pan, or approved equal. Cover shall read: C.S.D. No. 2. The frame shall be grouted into place on top of flat top.



PROJECT ENGINEER	DATE	DESIGN ENGINEER	DATE	APPROVAL RECOMMENDED BY	DATE
R.P. KUZMICH	7/67	J.M. REYNOLDS	7/67	V.D. PAUL	7/67

02542

19-19



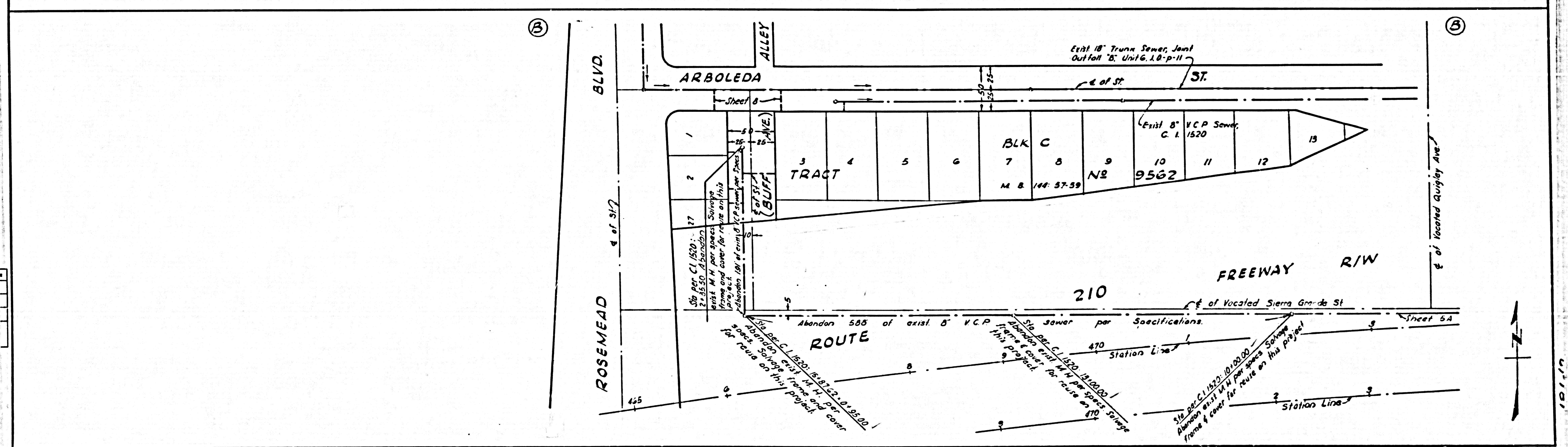
COUNTY	CITY	FEDERAL PROJECT NO.	SHEET NO.	TOTAL SHEETS
VII	LA	210	5	9

Project Name: *Arroyo*

P.C. 7210
SHEET 5 OF 9 SHEETS

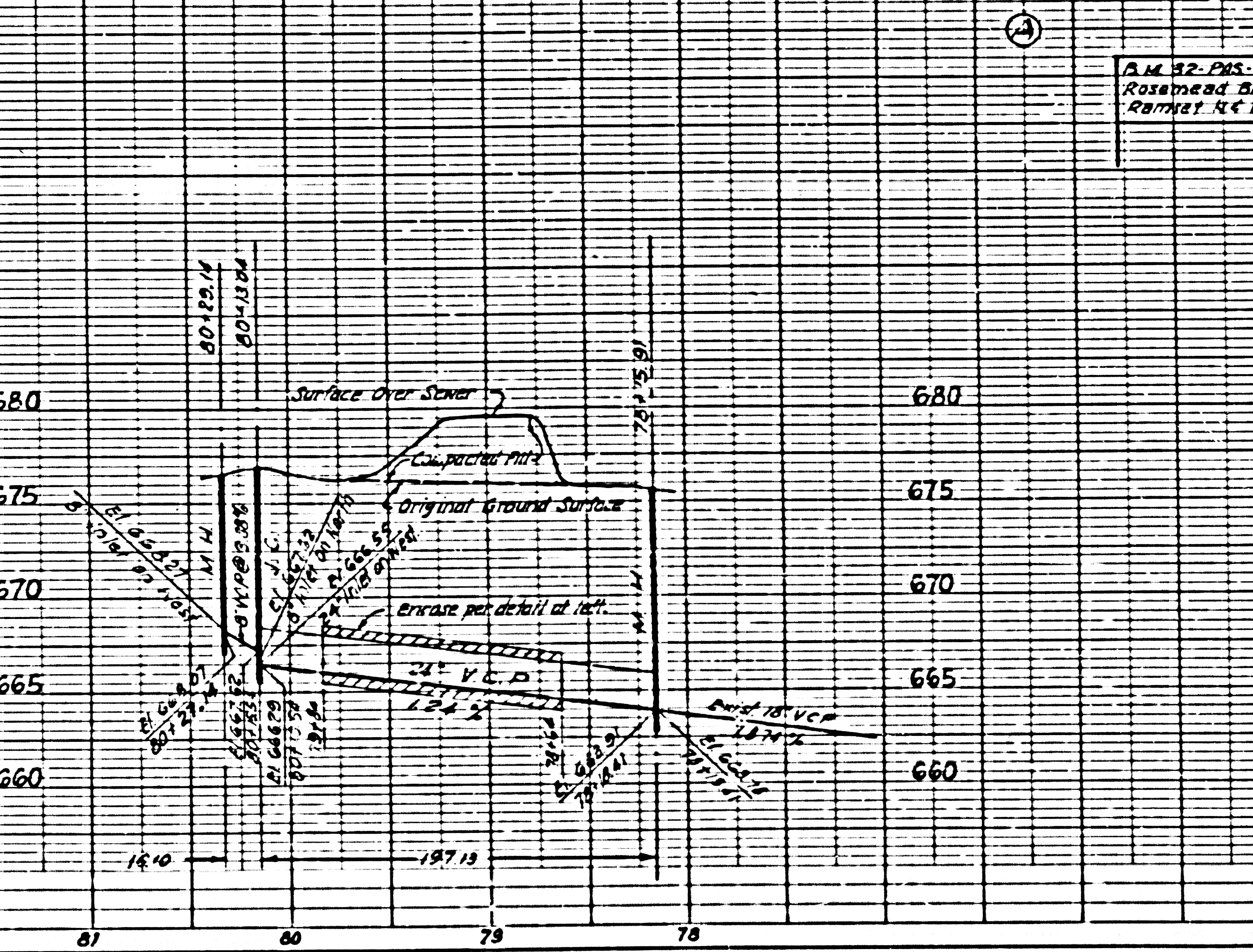
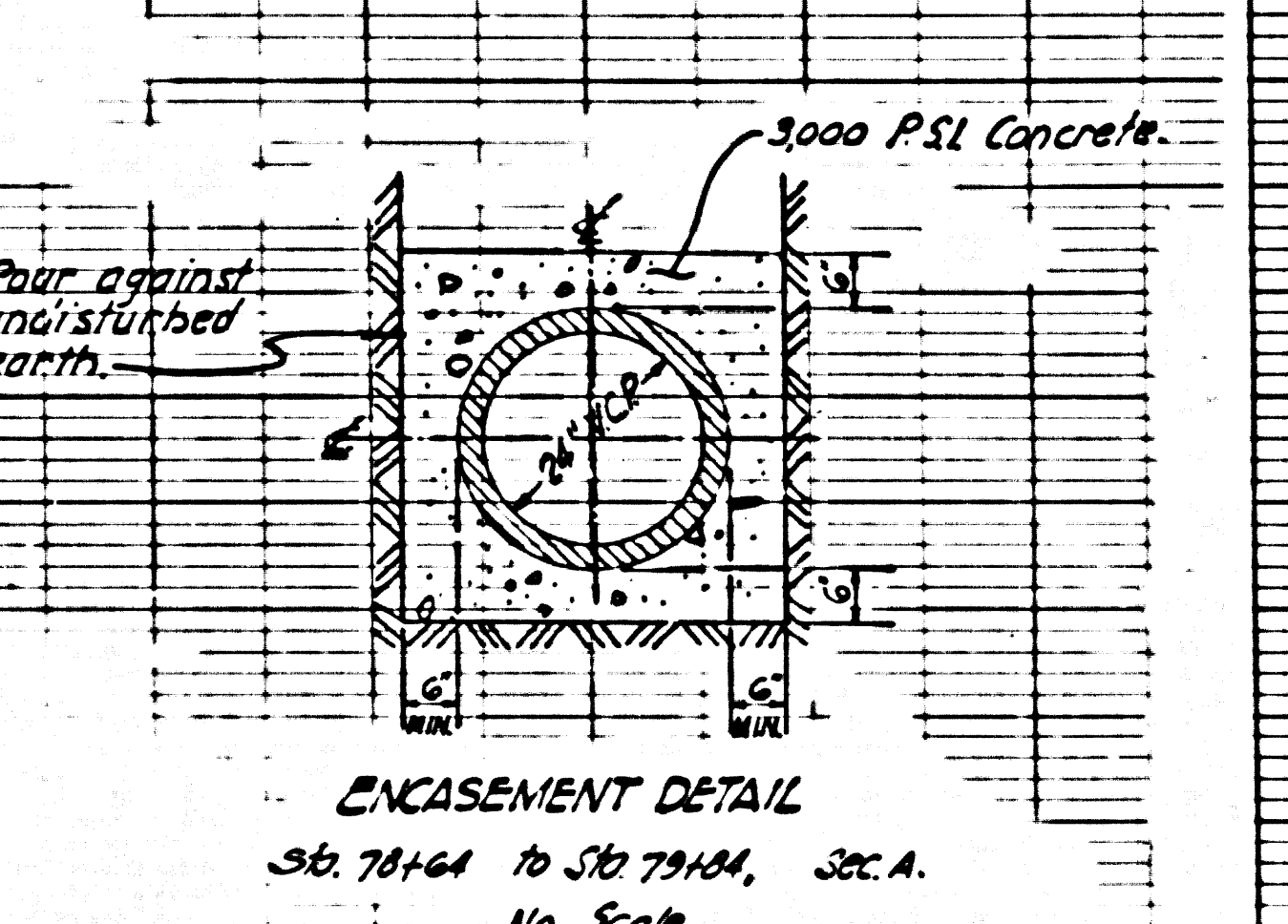
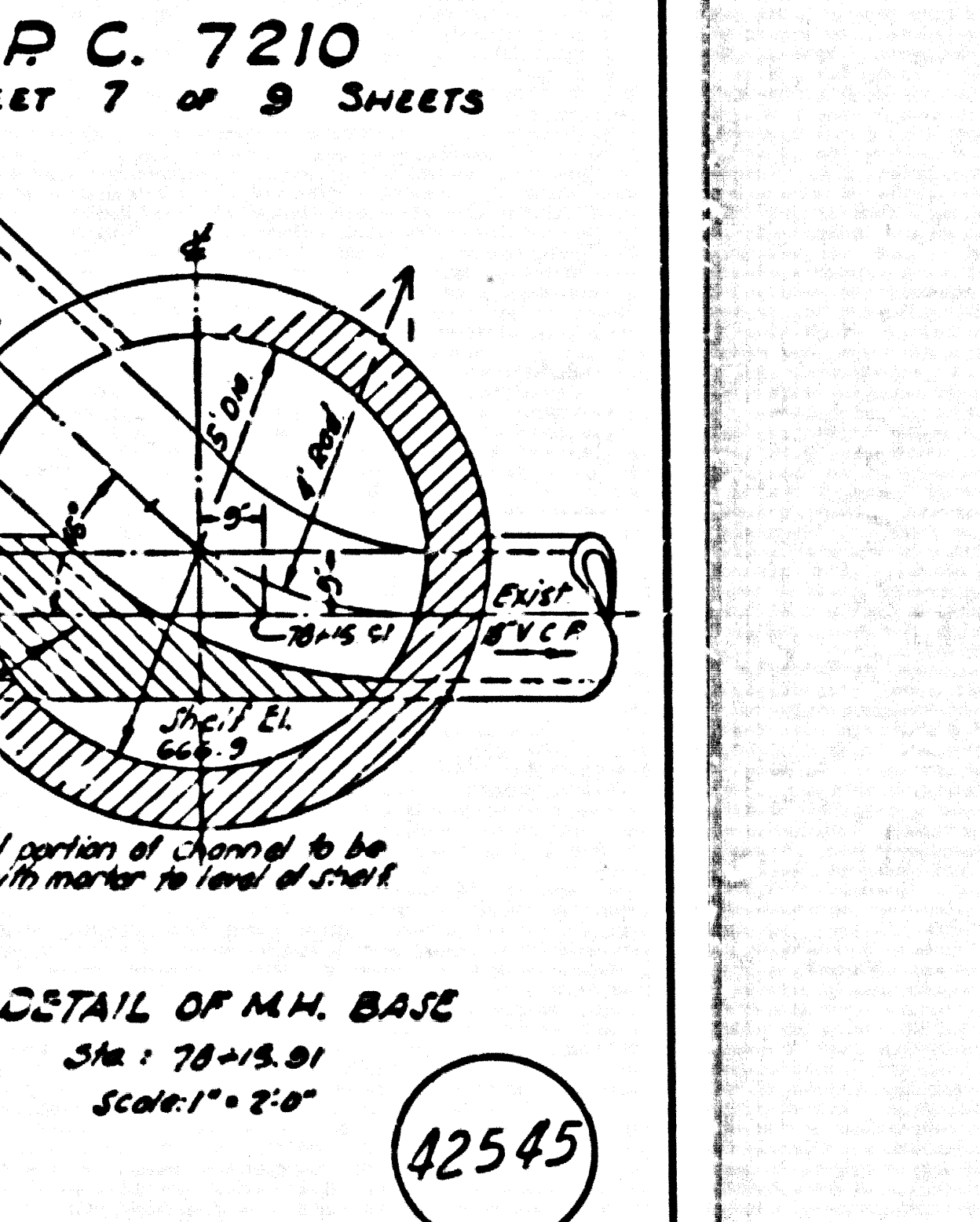
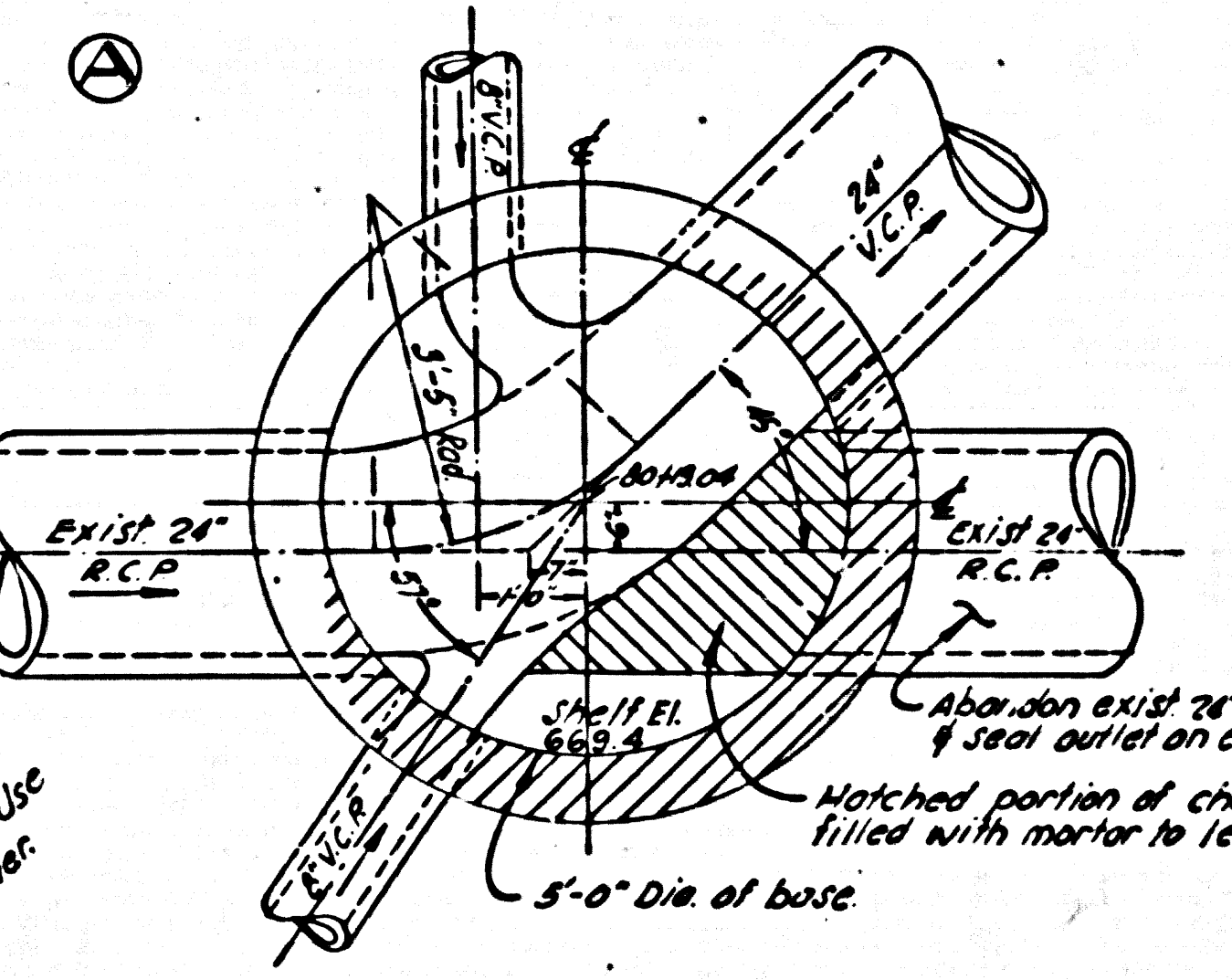
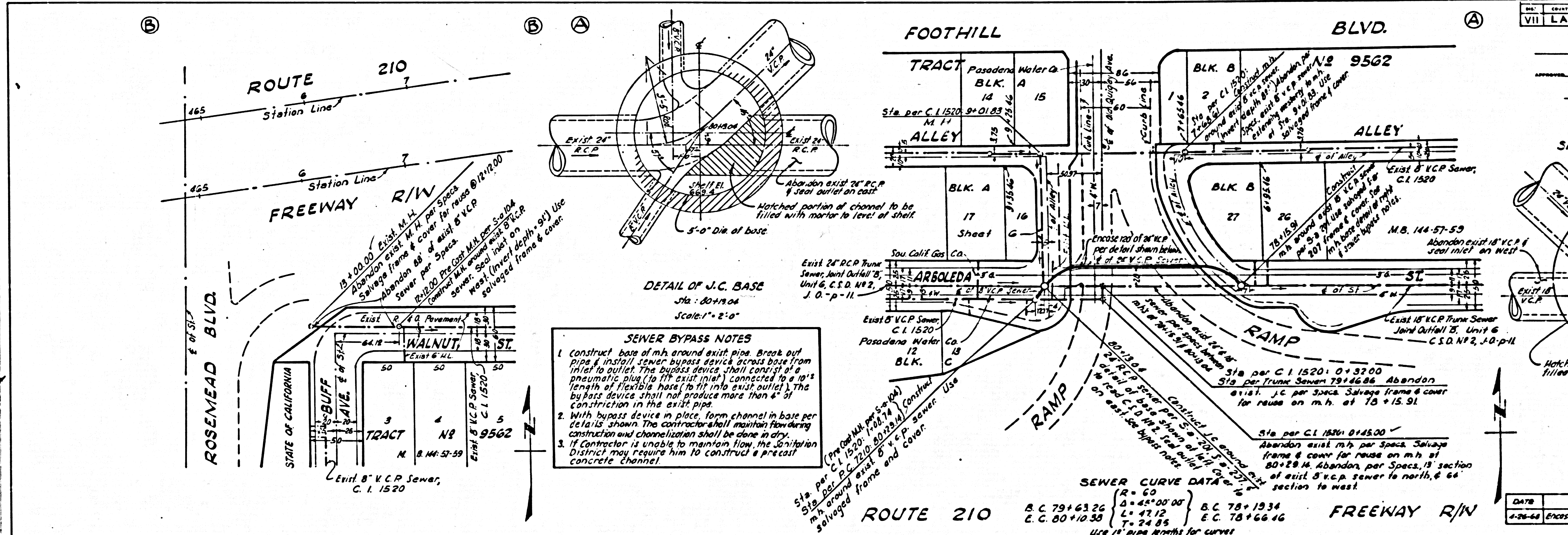
42543

Revised Buff Ave to conform with revision on sheet 8.

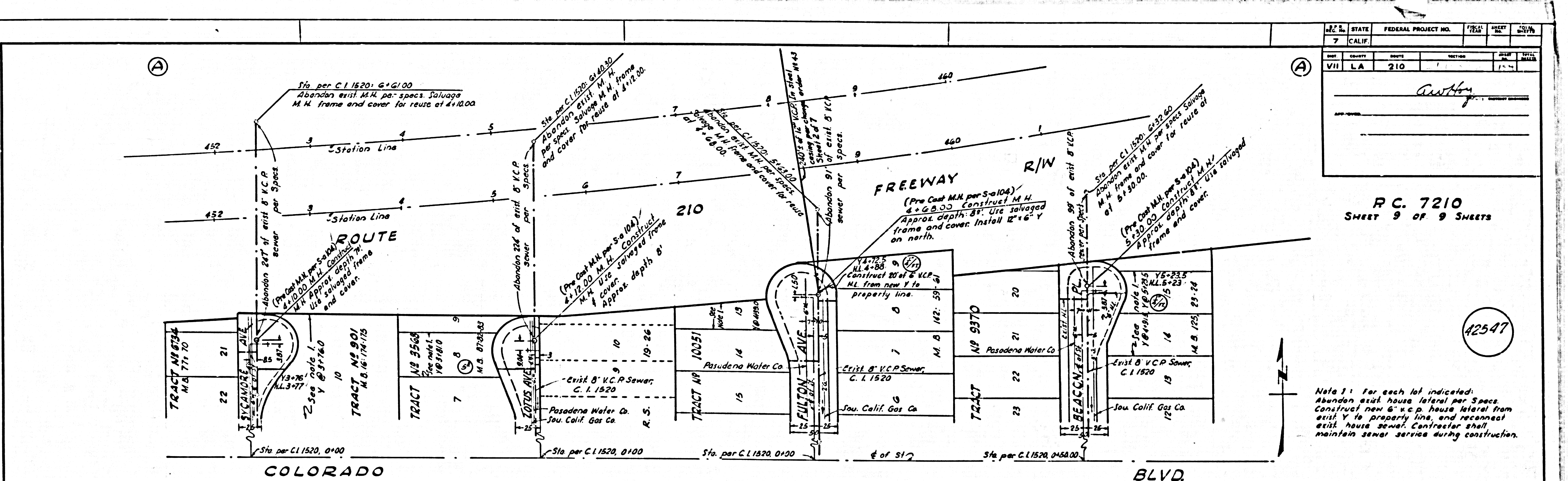


Project Engineer	Date	Design Engineer	Date	Approval Recommended By	Date
RPKUZMIC	7/69	J.M.REYNOLDS	7/69	V.D.PAUL	7/69

B.P.R.	STATE	FEDERAL PROJECT NO.	FISCAL YEAR	SHEET NO.	TOTAL SHEETS
VII	LA	210	27.1-32.6	152	



PROJECT ENGINEER	DATE	DESIGN ENGINEER	DATE	BY	DATE
RPKZMIG	7/67	J.M. REYNOLDS	7/67	V.D. PAUL	7/67



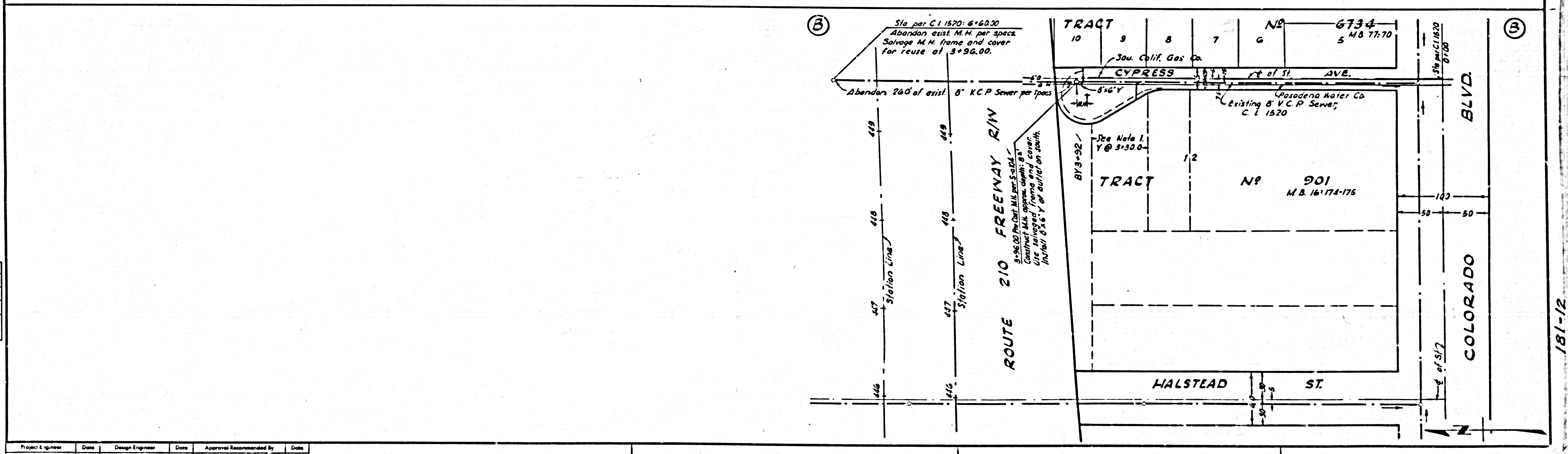
STATE	FEDERAL PROJECT NO.	FEED	SHEET NO.	TOTAL SHEETS
7 CALIF.				
COUNTY	ROUTE	SECTION	PROJECT	DATE
VII LA	210			

Anthony

PC. 7210
SHEET 9 OF 9 SHEETS

42547

Note 1: For each lot indicated:
Abandon exist. house lateral per Specs.
Construct new 8" v.c.p. house lateral from
exit Y to property line, and reconnect
exist. house sewer. Contractor shall
maintain sewer service during construction.



Project Engineer	Date	Design Engineer	Date	Approval Recommended By	Date
R.P. KUZMICH	7/67	J.M. REYNOLDS	7/67	V.D. PAUL	7/67

181-12