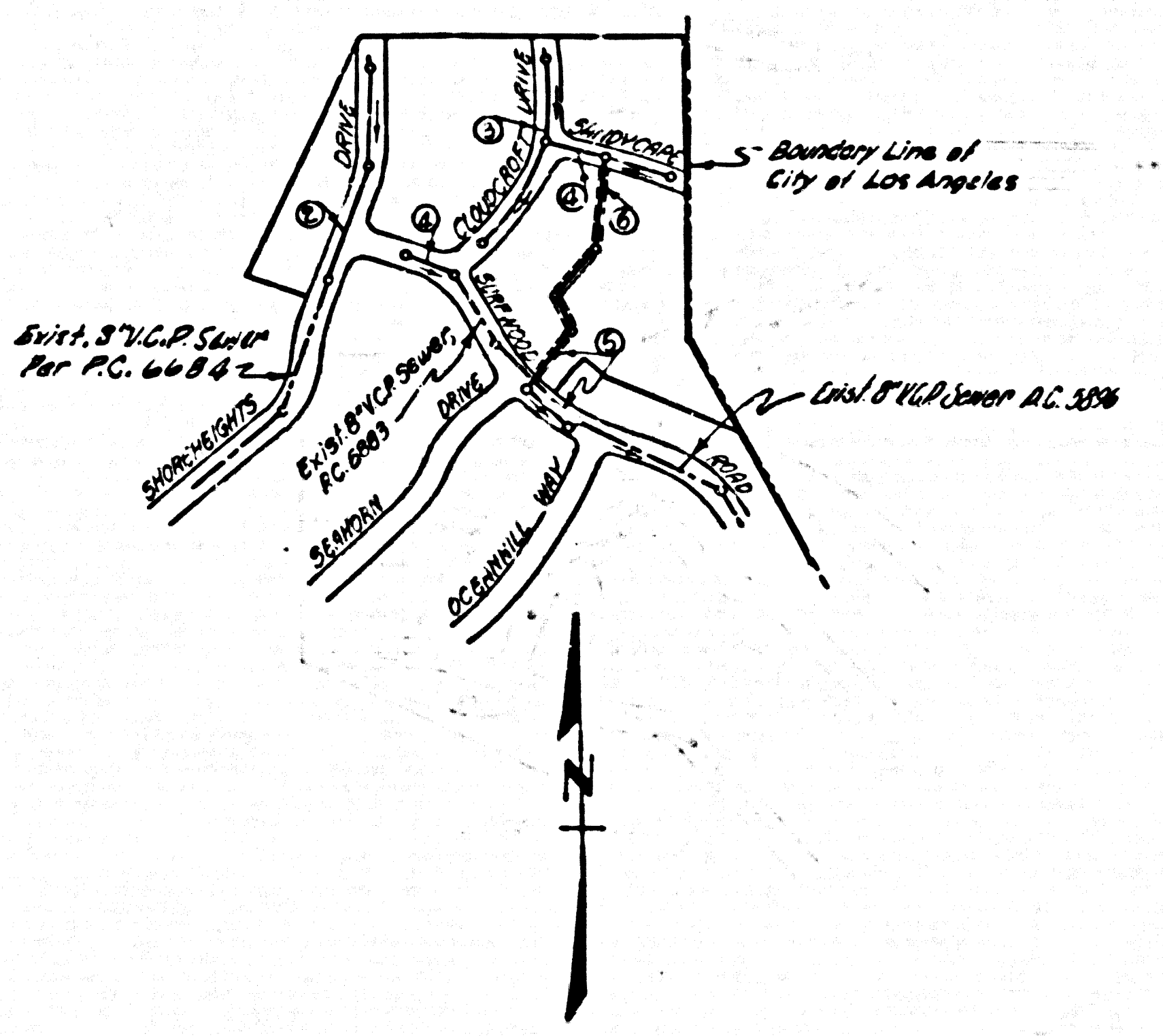


B.M. 015370 ELEV. 19.892  
 L.A. City Records Map on Pacific Coast Hwy. opp  
 W. line of Asc. # 88888 1/2" of Map of Area  
 38' N of N.W. Cor of Asc. Map 12-15  
 MALIBU QUAD. 1960



Revised Sewer alignment on Shoreheights Dr.  
 Page 5 from Sta 41504 to Sta 3+612 Relocated  
 M.H. from Sta 3+4070 to Sta 3+0000

INDEX MAP  
 TRACT NO 27152  
 SCALE 1"=400'  
 DG. 7212

LOTS 30, 35, 36, 37 SERVED  
 BY EXISTING P.C. 5883

DOUBLE SCALE  
 MALIBU BLDG. DIST. NO. 92

PROFILE ALIGNMENT AND GRADE OF  
 SANITARY SEWERS PAGE 1  
 TO BE CONSTRUCTED IN

TRACT NO 27152  
 PRIVATE CONTRACT NO. 7212

W.S. 58  
 6 SHEETS, PAGE 1  
 SCALE: VERT. 1"=4' HORIZ. 1"=40'  
 DEC. 1964

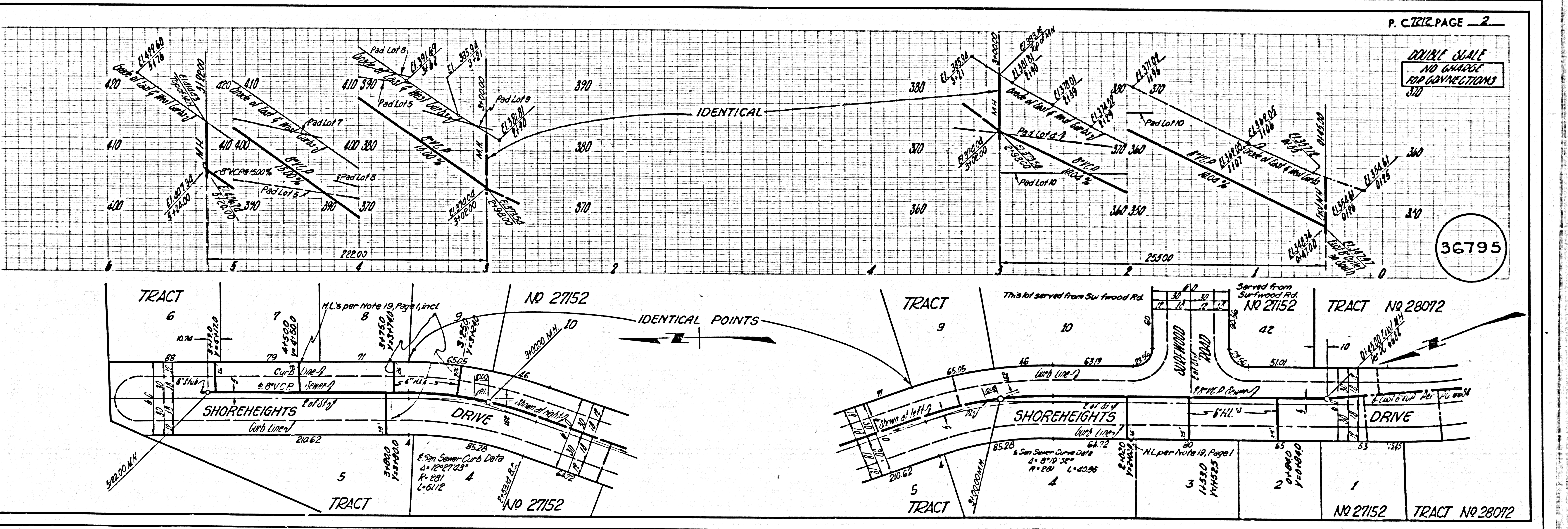
ENGINEERING SERVICE CORPORATION  
 PREPARED IN THE OFFICES OF  
 J. R. NEWELL  
 REG. C. E. NO. 18787

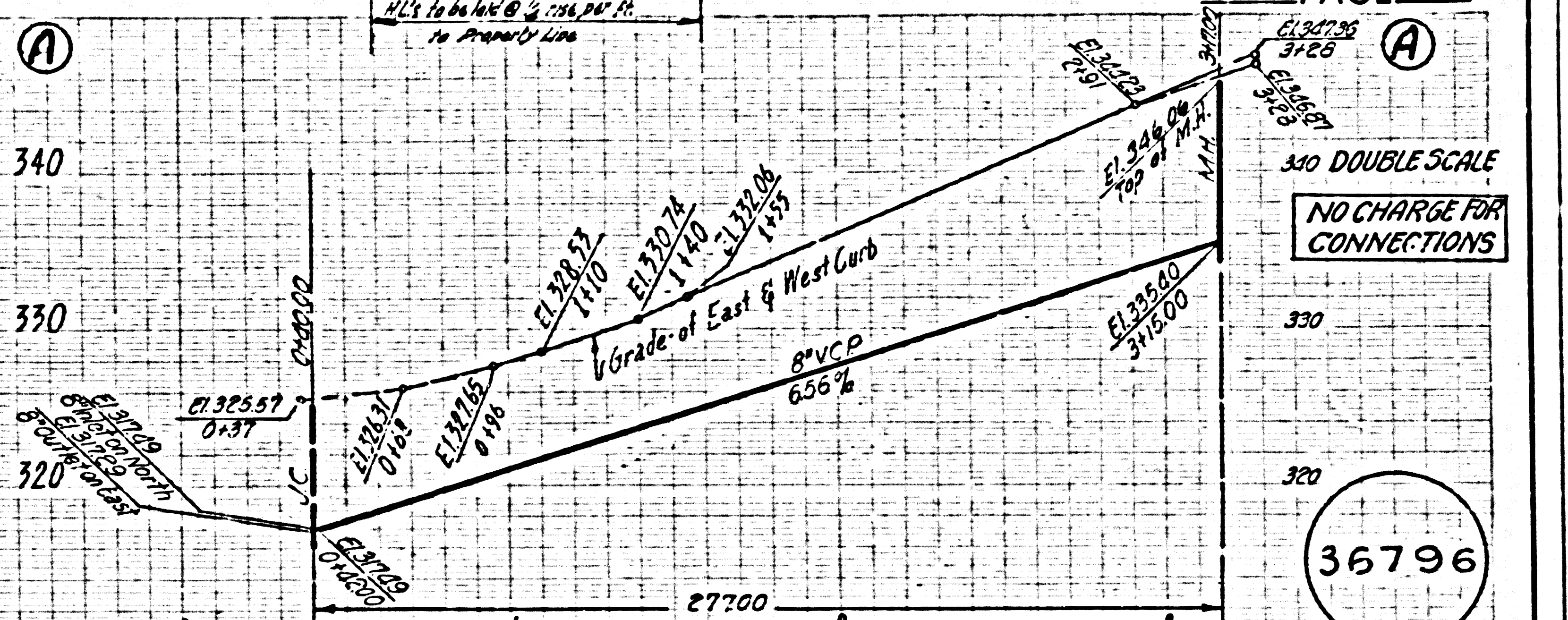
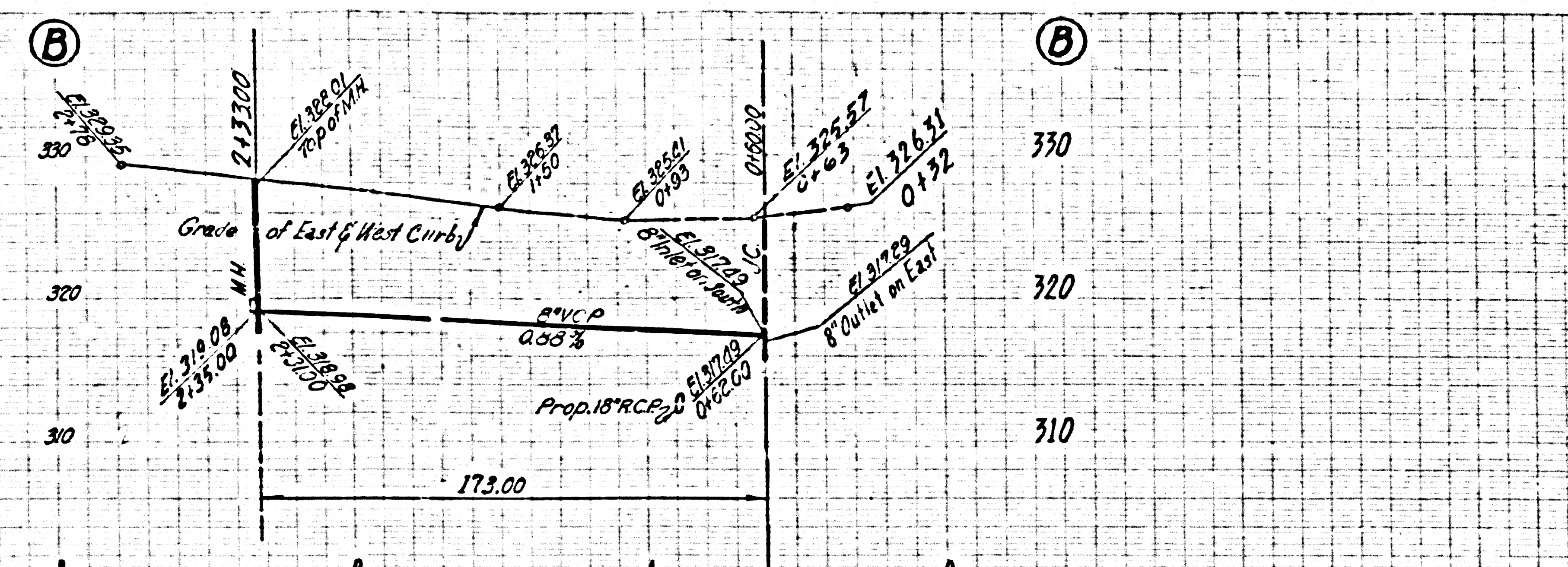
- NOTES:
1. PROVIDE STAKES ON THE PROPERTY LINE OR PROPERTY LINES PRODUCED AT RIGHT ANGLES TO THE SEWER LINE AT THE CENTER LINE OF EACH MANHOLE.
  2. NO REPRESENTATIVE OF THE COUNTY ENGINEER WILL SURVEY OR LAY OUT ANY PORTION OF THE WORK.
  3. THE PRIVATE ENGINEER SHALL FURNISH THE COUNTY ENGINEER WITH BEARING SHEETS AND STATIONING FOR ALL HOUSE LATERALS AND BRANCHES AND SHALL PROVIDE STAKES FOR THEM AT THEIR PROPER LOCATIONS WITH STATIONING PLAINLY MARKED. ALL HOUSE LATERALS SHALL BE CONSTRUCTED IN A STRAIGHT ALIGNMENT AT RIGHT ANGLES TO THE MAIN LINE SEWER EXCEPT AS SHOWN ON THE PLANS. HOUSE LATERALS FROM CHIMNEYS SHALL NOT HAVE AN ANGLE OF LESS THAN 45° WITH THE MAIN LINE SEWER. ANY CHANGE IN ALIGNMENT SHALL BE INDICATED BY NOTING BY THE PRIVATE ENGINEER.
  4. THE PRIVATE ENGINEER SHALL FURNISH THE HOUSE LATERAL DEPTH AT THE PROPERTY LINE BELOW THE TOP OF CURB ELEVATION FOR EACH HOUSE LATERAL ON THE GRADE SHEET.
  5. NO REVISIONS SHALL BE MADE IN THESE PLANS WITHOUT THE APPROVAL OF THE COUNTY ENGINEER.
  6. THE CONTRACTOR SHALL NOTIFY THE CONSTRUCTION DIVISION BY TELEPHONE, MADISON 9-4747, EXT. 5151, AT LEAST TWENTY-FOUR HOURS BEFORE STARTING ANY WORK UNDER THIS CONTRACT.
  7. MANHOLES SHALL BE BRICK SEWER STRUCTURES PER S-3 PRECAST CONCRETE MANHOLES PER S-3 OR S-4 MAY BE USED AS AN ALTERNATE IN LOCATIONS APPROVED BY THE COUNTY ENGINEER.
  8. USE STANDARD MANHOLE FRAMES AND COVERS, S-10, EXCEPT AS NOTED.
  9. MANHOLE TOPS IN UNIMPROVED RIGHTS-OF-WAY TO BE SIX INCHES ABOVE FINISHED GRADE.
  10. USE EXTRA STRENGTH PIPE. ALL PIPE IS 8" STANDARD DEPTH EXCEPT AS NOTED.
  11. USE MECHANICAL COMPRESSION JOINTS FOR ALL V.C.P. JOINTS PER SPCS., SECT. 34; 48 & 49.
  12. IF A POWER POLE IS WITHIN THREE FEET OF THE SEWER, THE SEWER SHALL BE ENCASED PER S-23 TWO FEET ON EACH SIDE FROM THE POINT OF INTERFERENCE.
  13. IF DURING THE COURSE OF CONSTRUCTION IT IS DETERMINED THAT THERE IS LESS THAN FOUR FEET OF COVER OVER THE TOP OF A MAIN LINE OR HOUSE LATERAL V.C.P. SEWER WHICH IS NOT INDICATED ON THE PLANS, THE PIPE SHALL BE ENCASED PER S-23 UNLESS OTHERWISE APPROVED BY THE COUNTY ENGINEER.
  14. HOUSE LATERALS TO BE CONSTRUCTED WITH INVERTS AT PROPERTY LINE ... 6" FEET BELOW CURB GRADE EXCEPT AS NOTED.
  15. RESURFACE ALL TRENCHES WITHIN PAVED AREAS TO MEET L.A. COUNTY ROAD DEPT. OR CALIFORNIA STATE HIGHWAY REQUIREMENTS IN ACCORDANCE WITH PERMITS.
  16. FOR ALLOWABLE LEAKAGE TEST USE FORMULA NO. ... SPCS., SEC. 84.
  17. ALL STAKE AND LINE TRENCH QUALITY WORKING WILL BE DEEMED UNACCEPTABLE.
  18. NO CONSTRUCTION WILL BE PERMITTED IN FILLED AREAS UNLESS NECESSARY IDENTIFICATION IS SUBMITTED TO THE CONSTRUCTION DIVISION OF THE COUNTY ENGINEER'S DEPARTMENT THAT RELIABLE CONSTRUCTION IS GREATER THAN 80%.
  19. IF CONSTRUCTION IS LESS THAN 80%, THE WORK MUST BE GUARANTEED AS SHOWN ON THE PLANS PER S-23 AND SPECIAL MANHOLE BASKETS PROVIDED PER S-15.
  20. IF CONSTRUCTION IS 80% OR GREATER GUARANTEES IS NOT REQUIRED IF CONSTRUCTION IS 80% OR GREATER. SPECIAL MAN BASKETS ARE NOT REQUIRED.
  21. WHERE STATIONS APPEAR AT THE END OF HOUSE LATERALS, SUCH HOUSE LATERALS SHALL NOT BE CONSTRUCTED ABOVE THAT STATION.

COLLECT CHARGES  
 AS INDICATED  
 H. H. Jones 1-15-65

NO CONNECTIONS FOR THE DISPOSAL OF INDUSTRIAL WASTES SHALL BE MADE TO SEWERS SHOWN ON THESE DRAWINGS WITHOUT WRITTEN PERMISSION FROM THE CHIEF ENGINEER AND GENERAL MANAGER OF THE COUNTY SANITATION DISTRICTS.

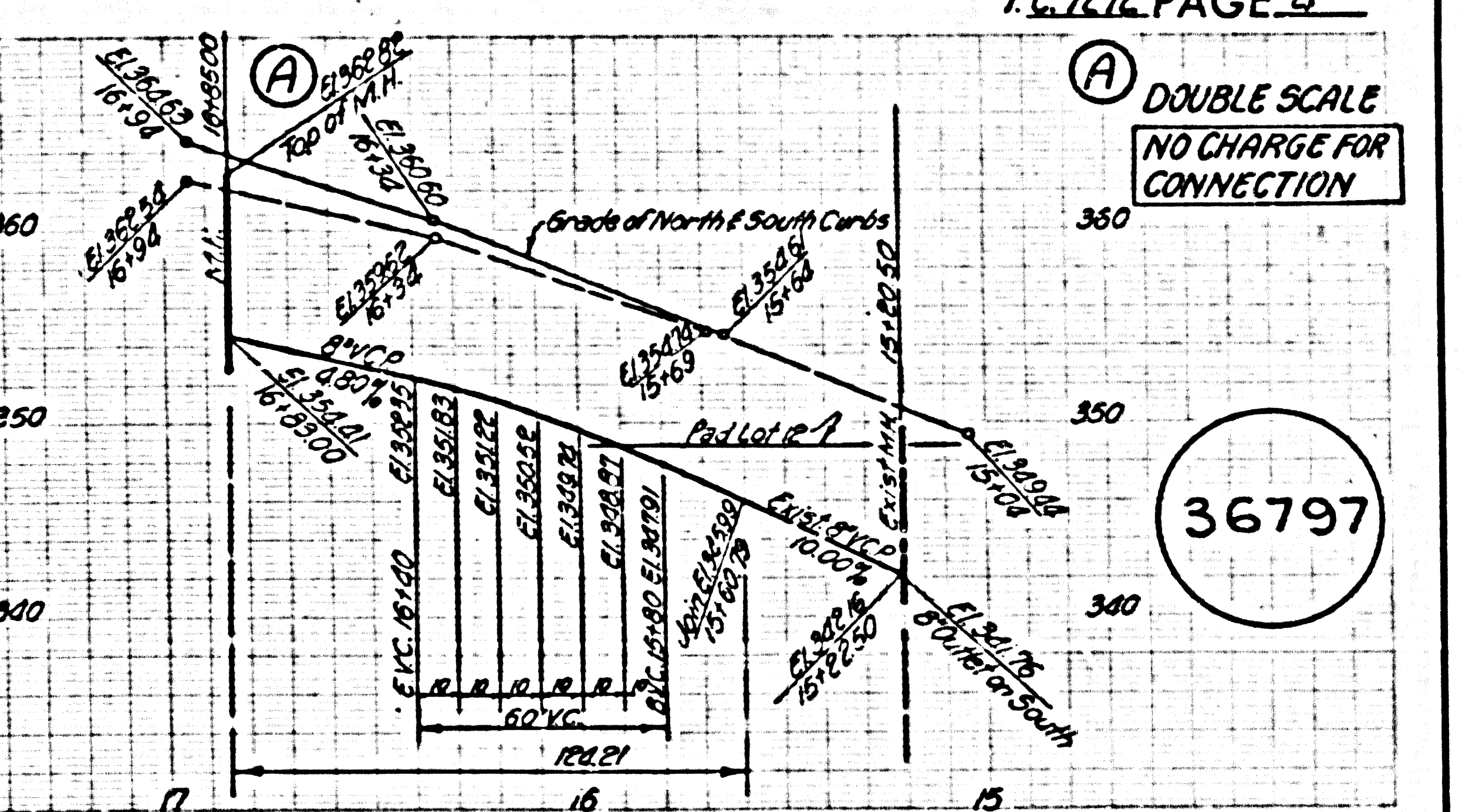
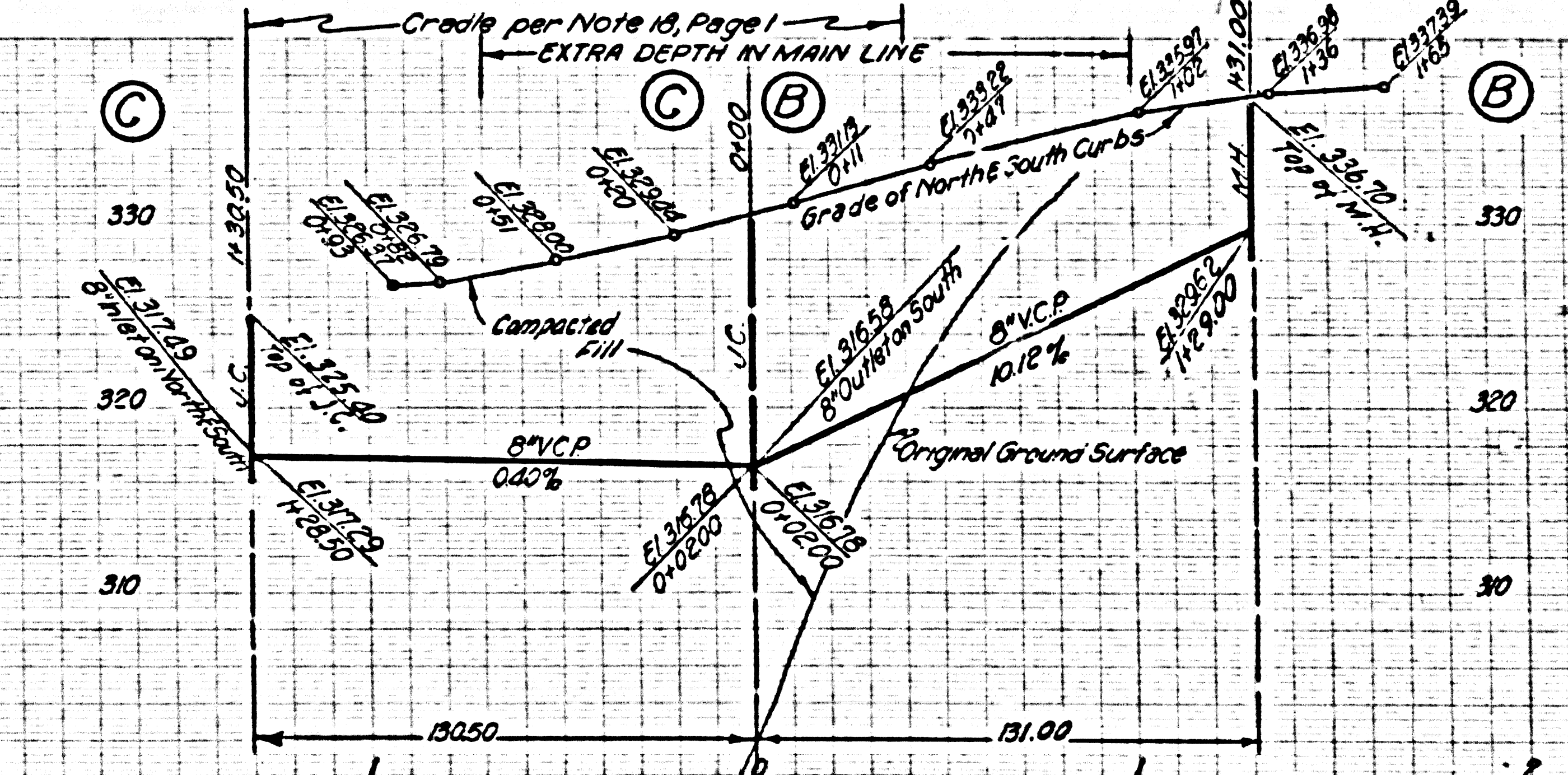
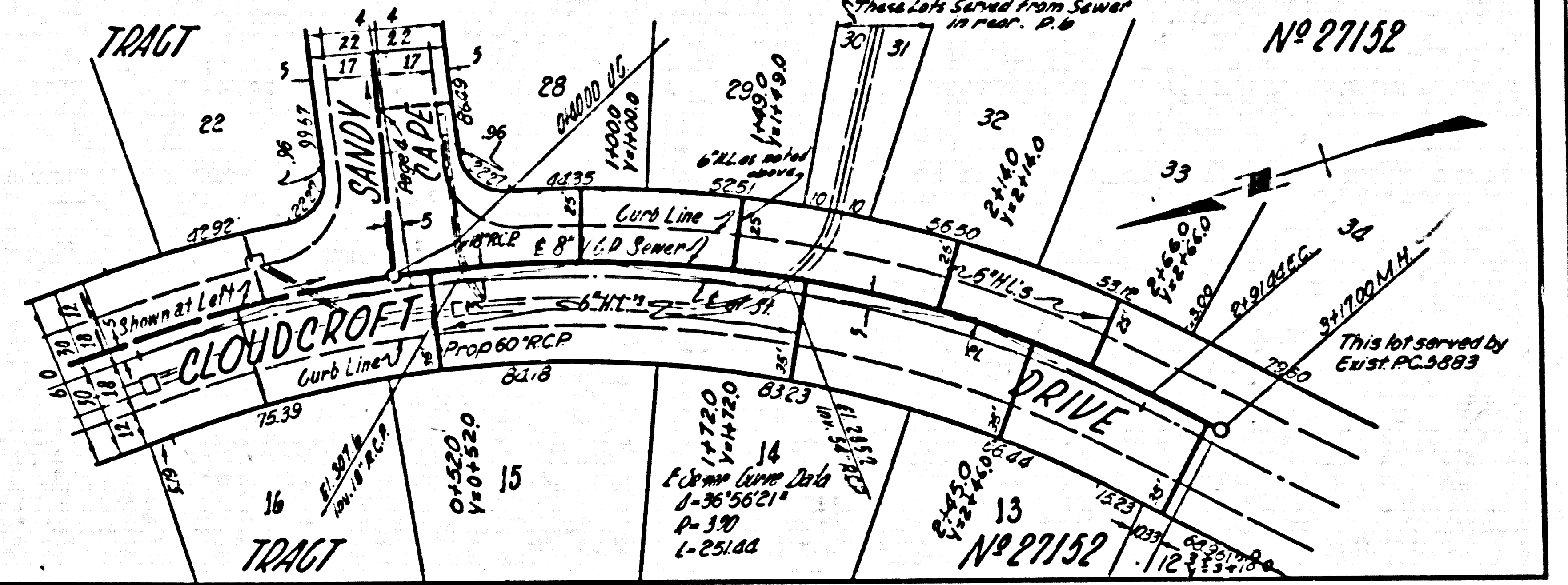
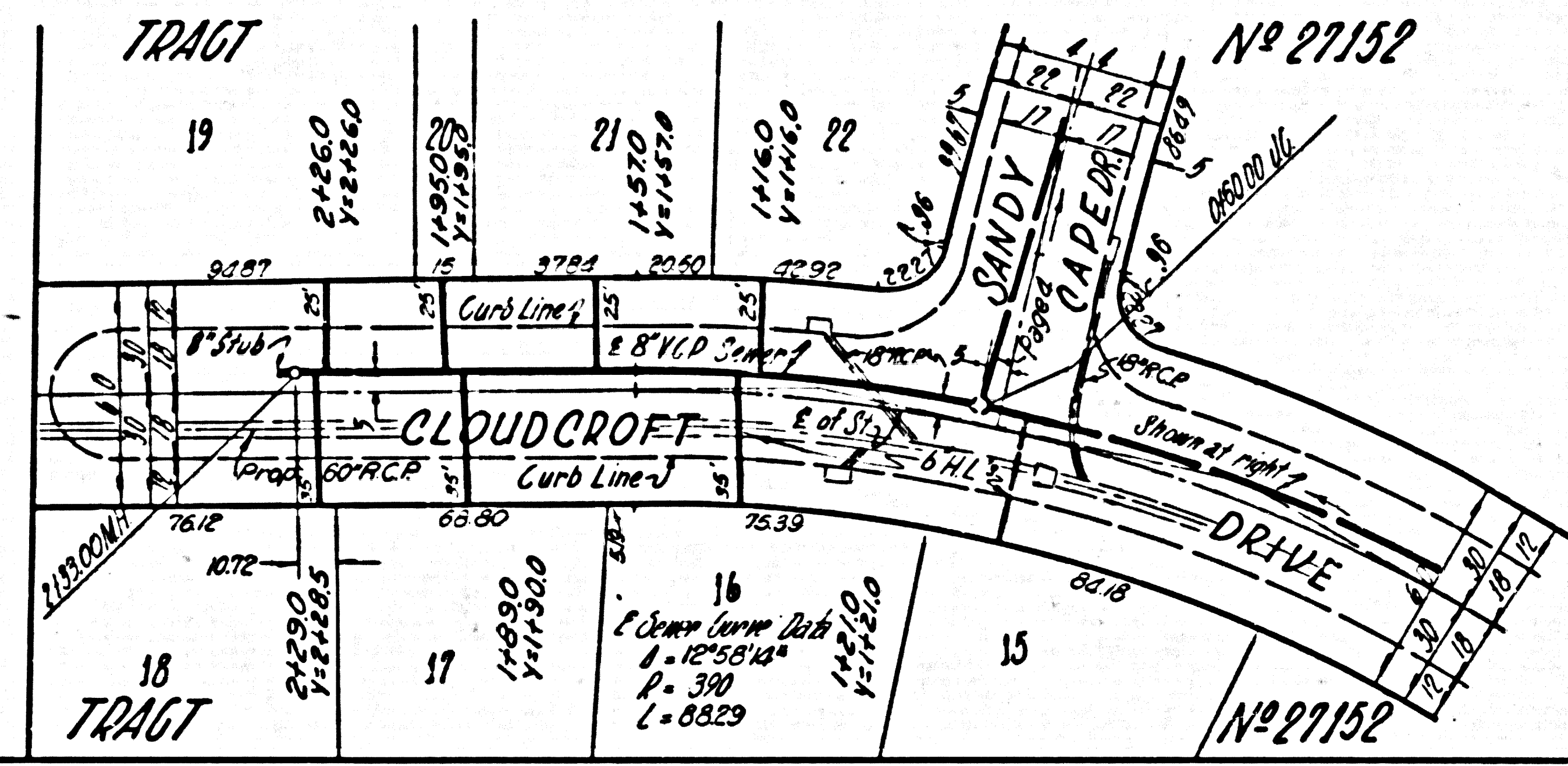
COUNTY OF LOS ANGELES, CALIFORNIA  
 J. D. PARKHURST, CHIEF ENGINEER  
 APPROVED BY: [Signature] ASSISTANT SANITATION ENGINEER  
 APPROVED BY: [Signature] OFFICE ENGINEER  
 CHECKED BY: [Signature] REG. C. E. NO. 10883  
 36794  
 J.N. 0364.70





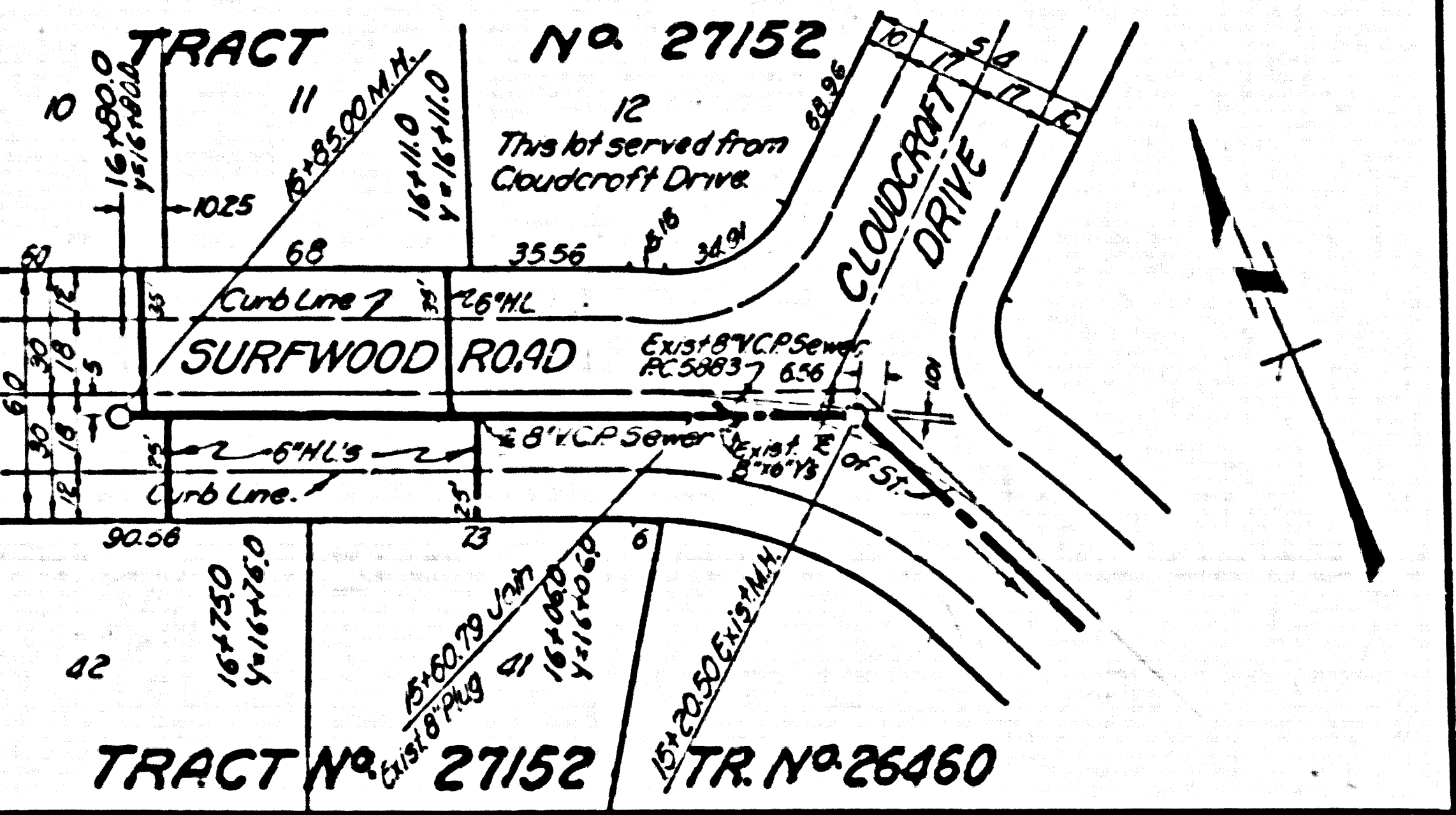
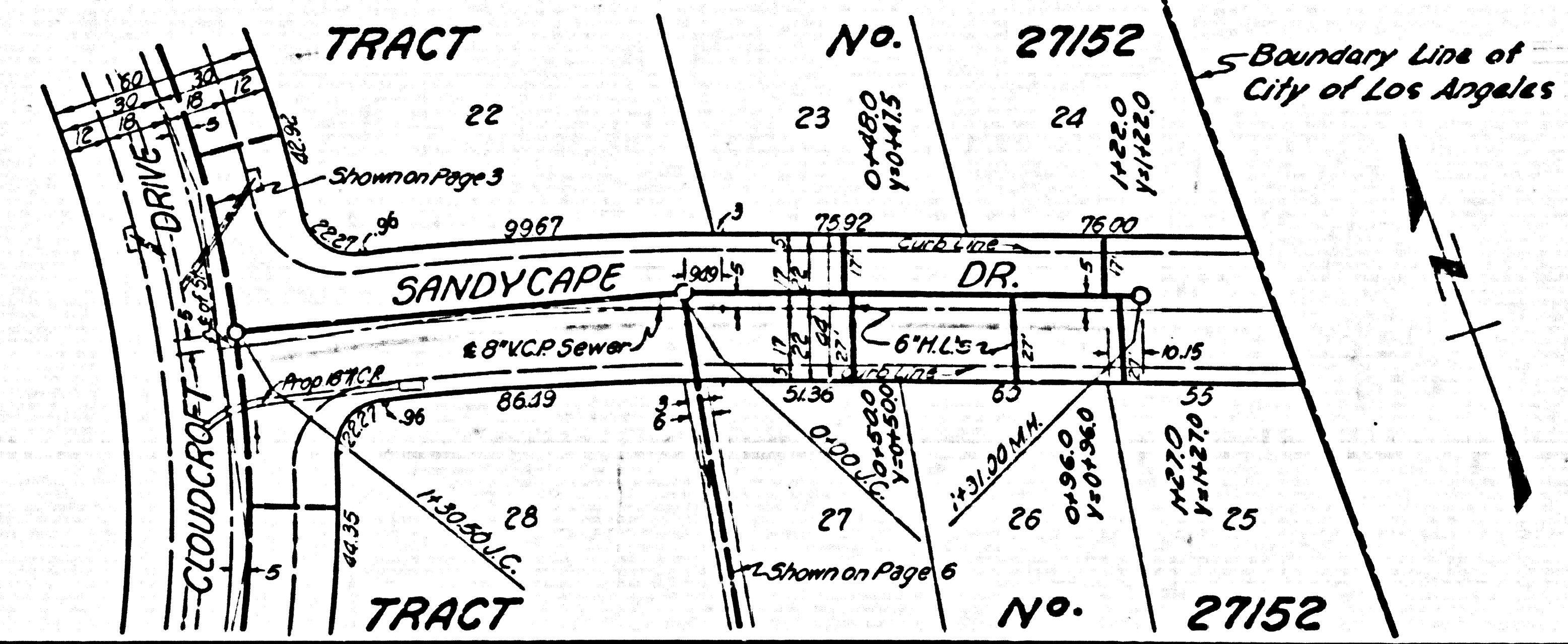
310 DOUBLE SCALE  
NO CHARGE FOR CONNECTIONS

36796

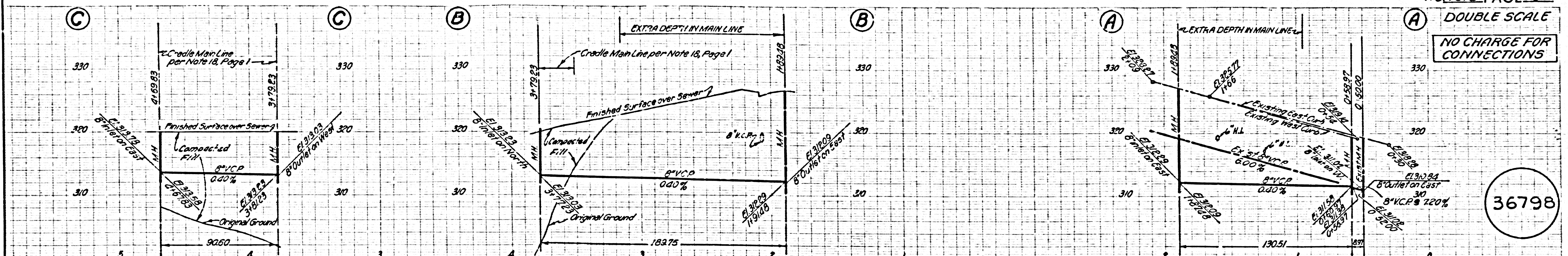


DOUBLE SCALE  
NO CHARGE FOR CONNECTION

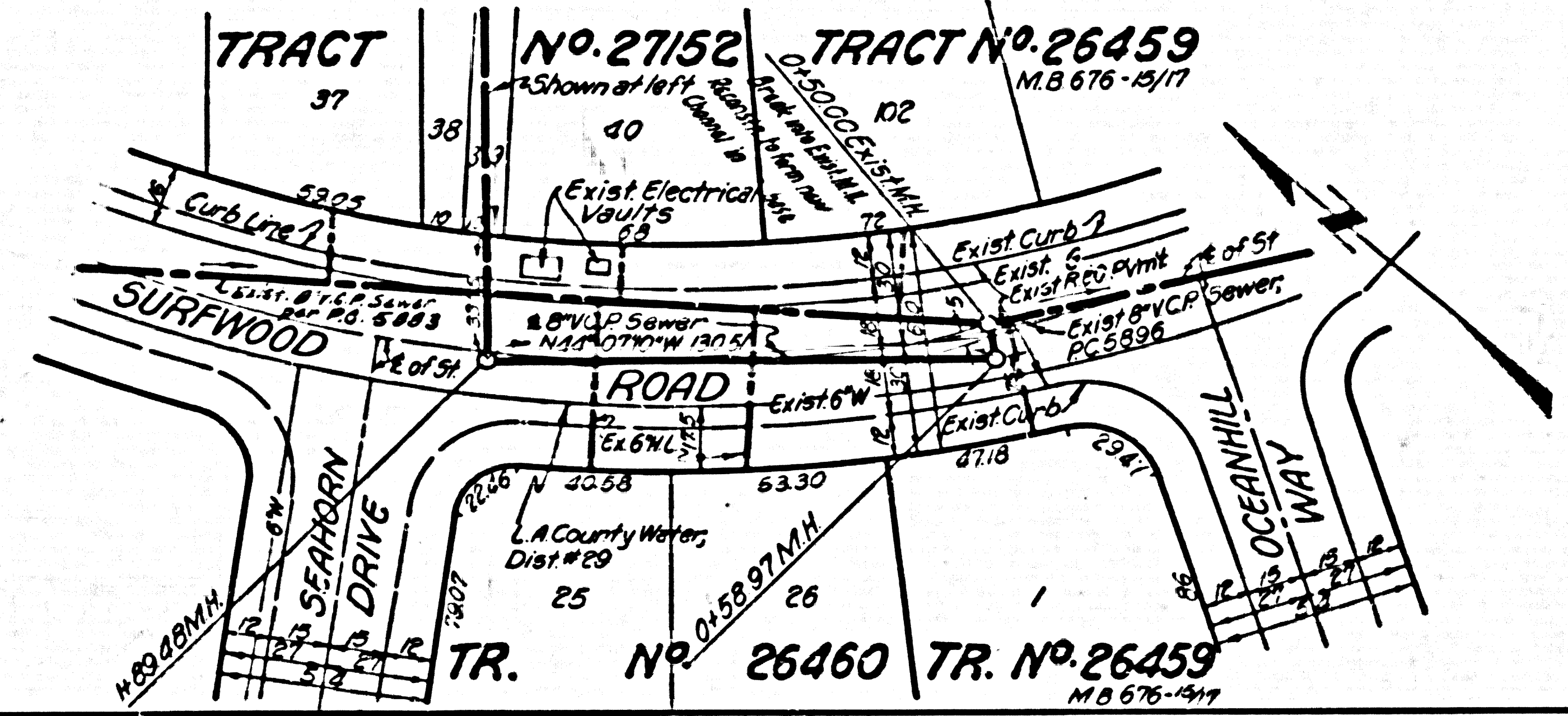
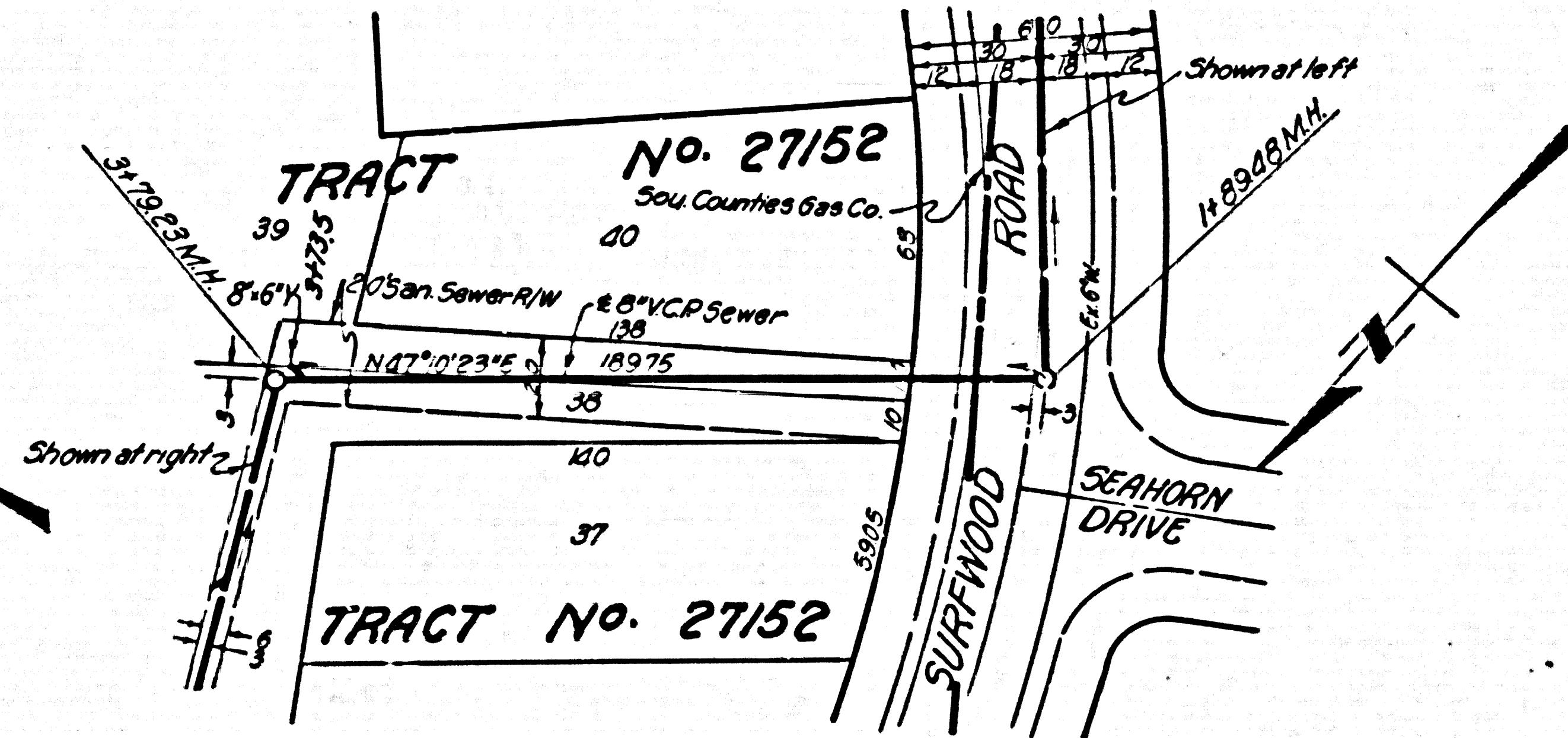
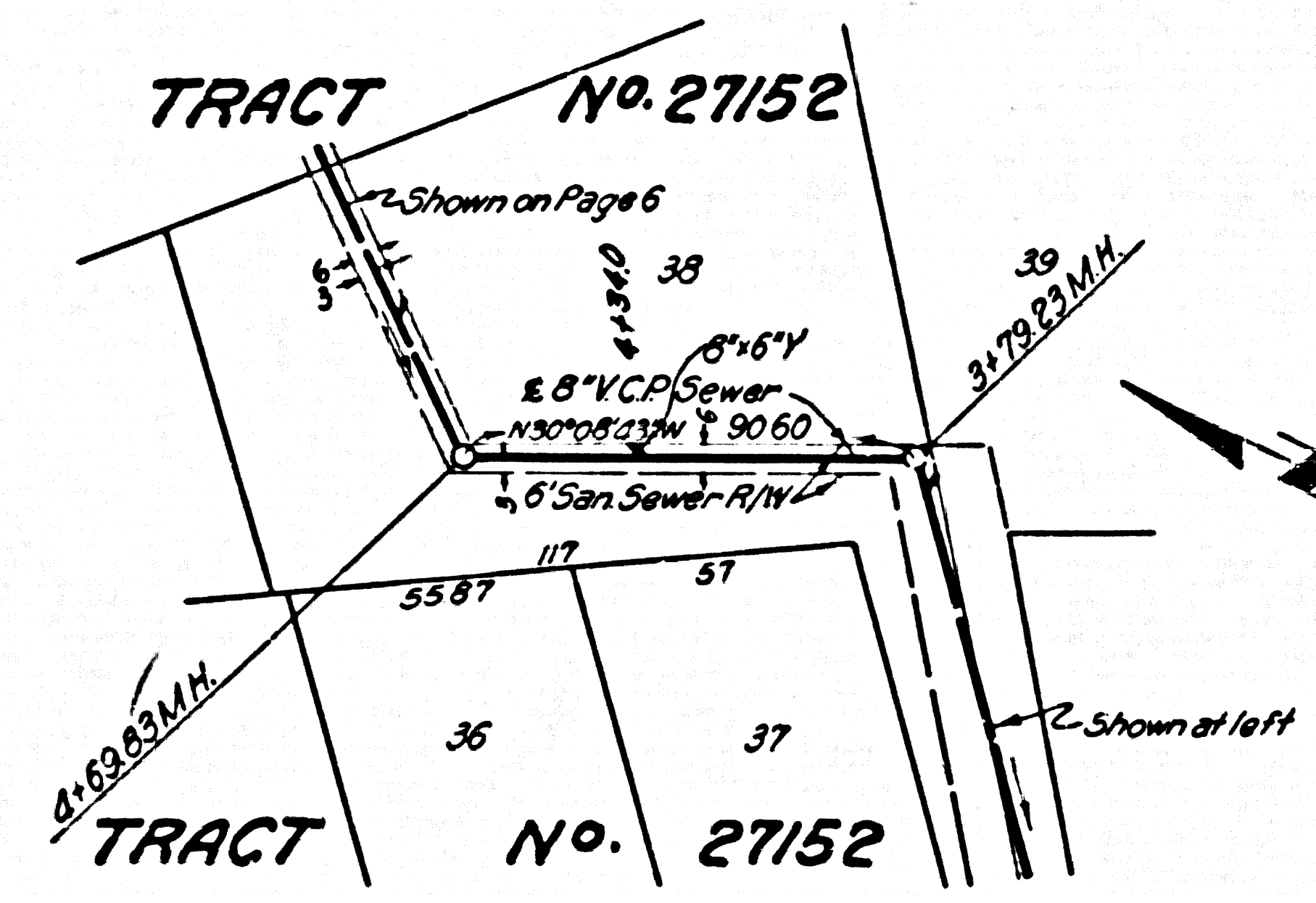
36797



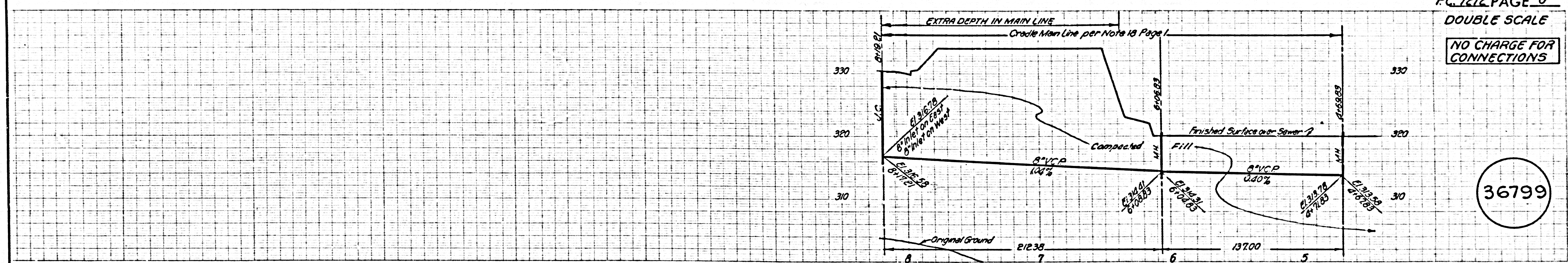
DOUBLE SCALE  
NO CHARGE FOR CONNECTIONS



36798



DOUBLE SCALE  
NO CHARGE FOR CONNECTIONS



36799

