

B.M. SV 3389A EIV. 4.4.021
Road B.M. for S. Curb of S.
end of Curb of sec of Myrtle
Ave. con. conc. light Standard
No. 13-73 70 1/2 N.P. of Del Amo
ARTESIA QUAD 1960
PAGE 2 ONLY

LAKEWOOD BUILDING DISTRICT No. 4.01

P.C. 7213
PAGE 1

PRIVATE CONTRACT NO. 7213

PROFILE, ALIGNMENT AND GRADE OF
SANITARY SEWERS
CONSTRUCTED IN
LAKEWOOD CITY PARKS
AND OTHER RIGHTS OF WAY

37162

3 SHEETS, 4 PAGES

SCALE: 1" = 4' EXCEPT AS NOTED
JAN., 1965

CITY OF LAKEWOOD, CALIFORNIA

JOHN A. LAMBE CITY ENGINEER

APPROVED BY *Richard S. Keller*
City Engineer

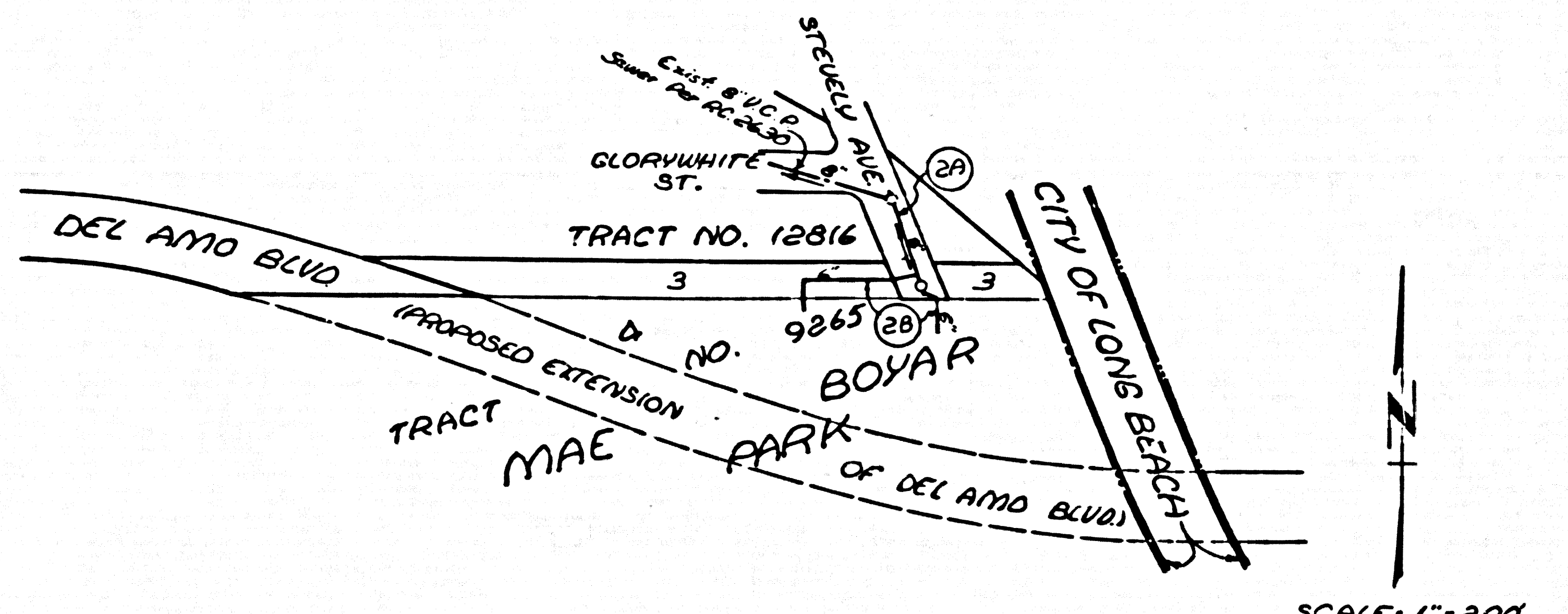
J. D. PARKHURST
CHIEF ENGINEER OF COUNTY
SANITATION DISTRICT NO. 18 #3
APPROVED BY *J. D. Parkhurst*
OFFICE ENGINEER

DESIGNED BY *John D. Giff*
P.E. No. 3177

NOTE:
WORK SHALL BE CONSTRUCTED ACCORDING TO STANDARD SPECIFICATIONS DATED MAY 25, 1962, ON FILE IN THE OFFICE OF THE CITY ENGINEER AND SHALL BE PROTECTED QUOTED IN THE PRESENCE OF THE CITY ENGINEER.
PLANS TO WHICH THIS IMPROVEMENT IS TO BE CONSTRUCTED ARE SHOWN ON PLANS AND PROFILES. GRADE POINTS FOR TOP OF CURB, CENTER LINE OF STREET OR CENTER LINE OF ALLEY ARE SHOWN BY CIRCLES ON PROFILES AT ALL POINTS BETWEEN BENCH MARK POINTS THE GRADE SHALL BE ESTABLISHED SO AS TO CONFORM TO A STRAIGHT LINE BETWEEN SAID BENCHMARK POINTS.
ELEVATIONS ARE IN FEET ABOVE U.S.C. & G.S. SEA LEVEL DATUM OF 1929.
UNIT PRICES FOR ADDITIONAL WORK WHICH MAY BE REQUIRED BUT WHICH CANNOT BE ASCERTAINED IN ADVANCE, SHALL BE SUBMITTED IN THE PROPOSAL.
ELEVATIONS AND DATA HEREON ARE HEREBY MADE A PART OF THE SPECIFICATIONS.

LAYOUT	McCull	JAN, 1963	UNDERGROUND	
TRACED	McCull	JAN, 1963	BENCH MARKS	
CHECKED	McCull	FEB, 1963	MAINTENANCE	
			INSPECTOR	
			RECORD PLANS	

W. S. 31 833



INDEX MAP
LAKEWOOD CITY PARK SEWERS
P.C. 7213

PAGE 3 Sewer Service to Mayfair Park
PAGE 4 Sewer Service to Bloomfield Park

COLLECT CHARGES
AS INDICATED.
Orville E. McCull

USE EXTRA STRENGTH PIPE, ALL PIPE IS STANDARD DEPTH EXCEPT AS NOTED.
USE MECHANICAL COMPRESSION JOINTS FOR ALL VITRIFIED CLAY PIPE SEWERS PER S.P.C. 24C. 24. 24. & 4.
ALL STRUCTURES SHALL BE BRICK SEWER STRUCTURES AS PER PLAN NO. 5-3, EXCEPT AS NOTED.
USE STANDARD MANHOLE FRAMES AND COVERS AS PER PLAN NO. 5-13, EXCEPT AS NOTED.
USE FORMULA NO. 5, SEC. 54 OF SPECIFICATIONS TO COMPUTE ALLOWABLE SLOPE.
CONTRACTOR SHALL NOTIFY THE CONSTRUCTION DIVISION BY TELEPHONE MADISON 9-4700, EXT. 8181 AT LEAST 24 HOURS BEFORE STARTING ANY WORK UNDER THIS CONTRACT.
CONSTRUCTION IN STATE HIGHWAYS SHALL CONFORM WITH STATE HIGHWAY PERMIT AND THE CONTRACTOR SHALL PAY ALL COSTS IN CONNECTION THEREWITH.
ALL STATE AND LOCAL TRENCH SAFETY ORDERS WILL BE RIGIDLY ENFORCED.
RESURFACING SCHEDULE, RESURFACING TRENCH WITHIN PAVED AREA WITH PRIME ROCK AND ON _____ INCHES IN THICKNESS ON _____ INCHES OF AGGREGATE BASE MATERIALS, EXCEPT AS NOTED BELOW.

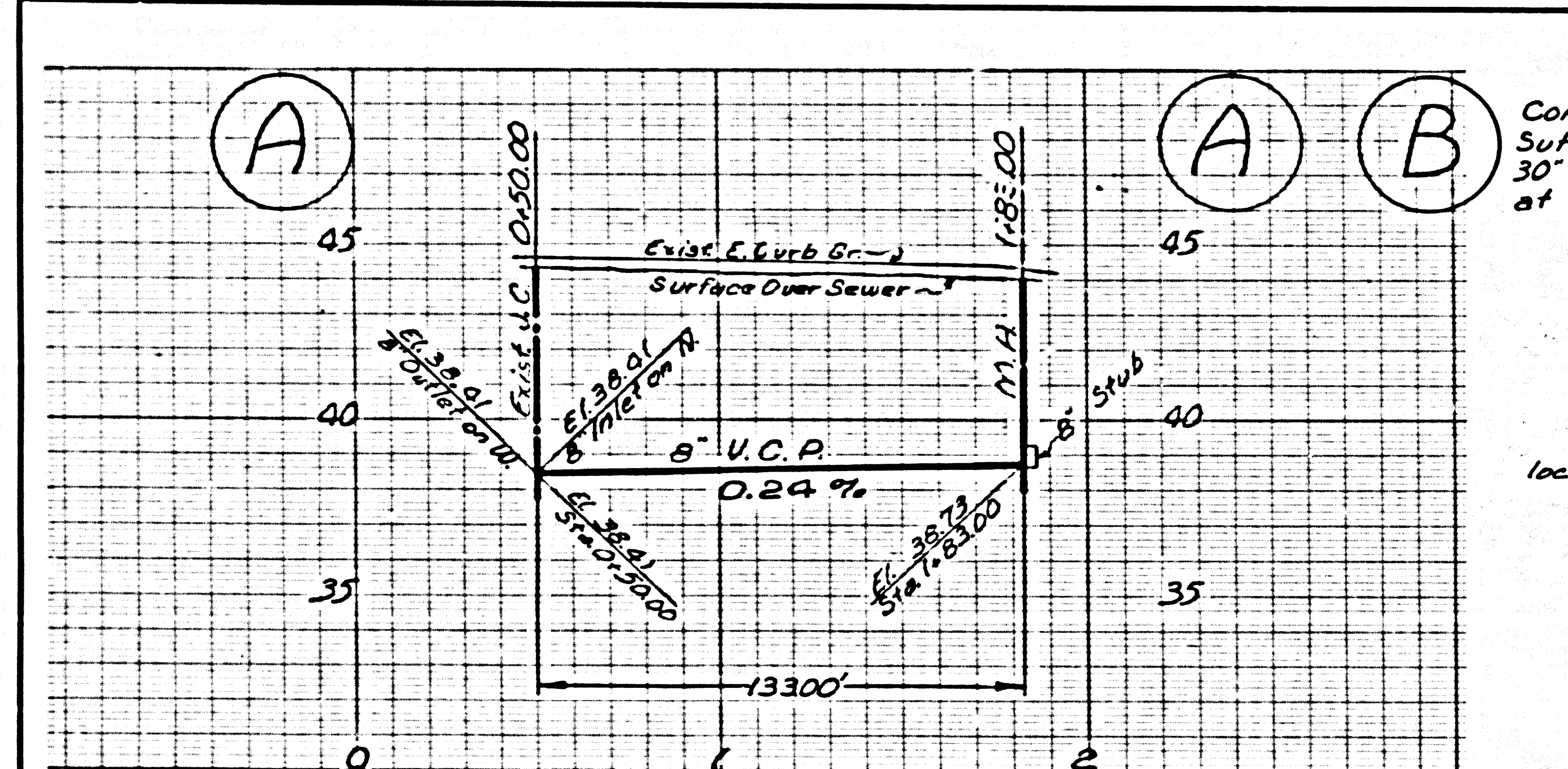
LINE NO.	STREET	STATION LIMITS	TYPE OF RESURFACING
4	PIIONEER BLVD	1+00.00 TO 1+99.99	3" Prime's R12 on 8" Base

ALL CONCRETE CROSS GUTTERS, CURBS, GUTTERS, PAVEMENT, AND DRIVEWAYS SHALL BE TURRELLED OR JACKED PER USE APPROVED COUNTY ROAD DEPARTMENT REQUIREMENTS.
THE FOLLOWING LATEST REVISIONS PLANS ON FILE IN THE OFFICE OF CITY ENGINEER SHALL APPLY IN THE CONSTRUCTION OF THIS PROJECT:

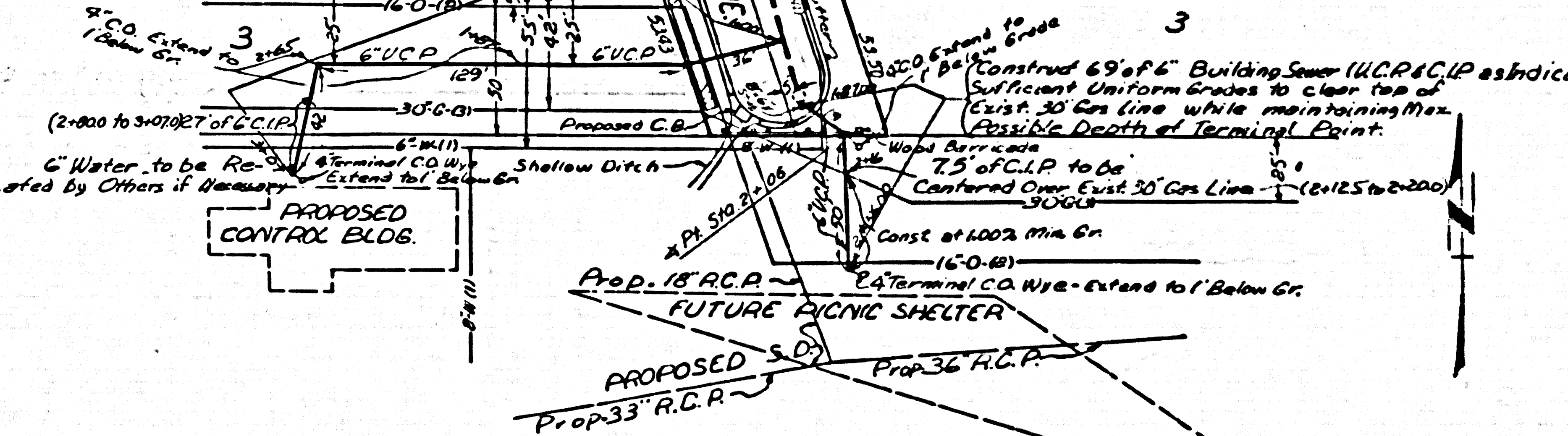
STANDARD LEGEND	1-1
STANDARD BRICK SEWER STRUCTURE	1-2
STANDARD MANHOLE FRAME AND COVER	1-3
STANDARD MANHOLE STEPS	1-4
STANDARD STOPS	1-5
STANDARD WYE SUPPORT	1-6
STANDARD SUPPORT AND PROTECTION OF SEWER PIPES	1-7, 2-1, 2-2, 2-3
STANDARD BIDDING FOR SEWER PIPES	1-8
MINIMUM EXCAVATION SAFETY REQUIREMENTS	1-9

THE UNDERGROUND UTILITY COMPANIES WITHIN THE LIMITS OF THIS PROJECT ARE AS FOLLOWS:
1. CITY OF LAKEWOOD WATER DEPT.
2. FOUR CORNERS PIPELINE CO.
3. SO. CALIFORNIA GAS CO.
4. SO. CALIFORNIA WATER CO.
5. GENERAL TELEPHONE CO.

NO CONNECTIONS FOR THE DISPOSAL OF INDUSTRIAL WASTES SHALL BE MADE TO SEWERS SHOWN ON THESE DRAWINGS WITHOUT WRITTEN PERMISSION FROM THE CHIEF ENGINEER AND GENERAL MANAGER OF THE COUNTY SANITATION DISTRICTS.



Construct 20' of 6" Building Sewer (U.C.P. as indicated) with Sufficient Uniform Grades to Clear Top of Exist. 30" Gas Line while maintaining Max. Possible Depth at Terminal Point.

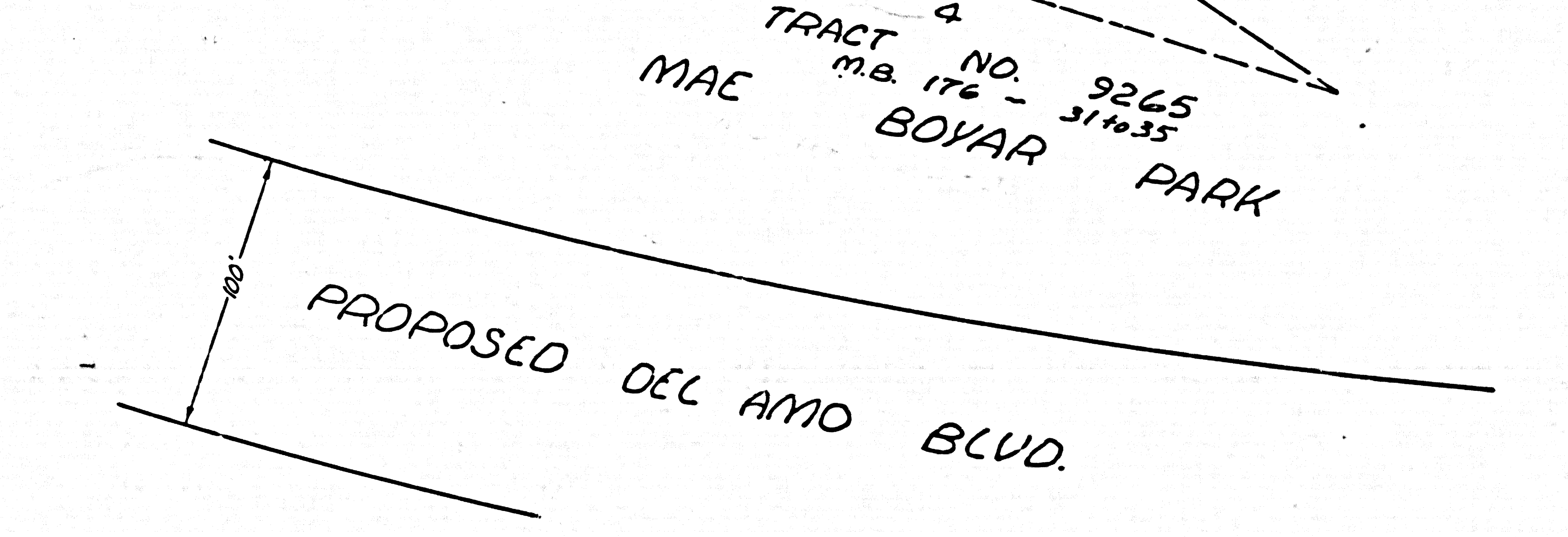
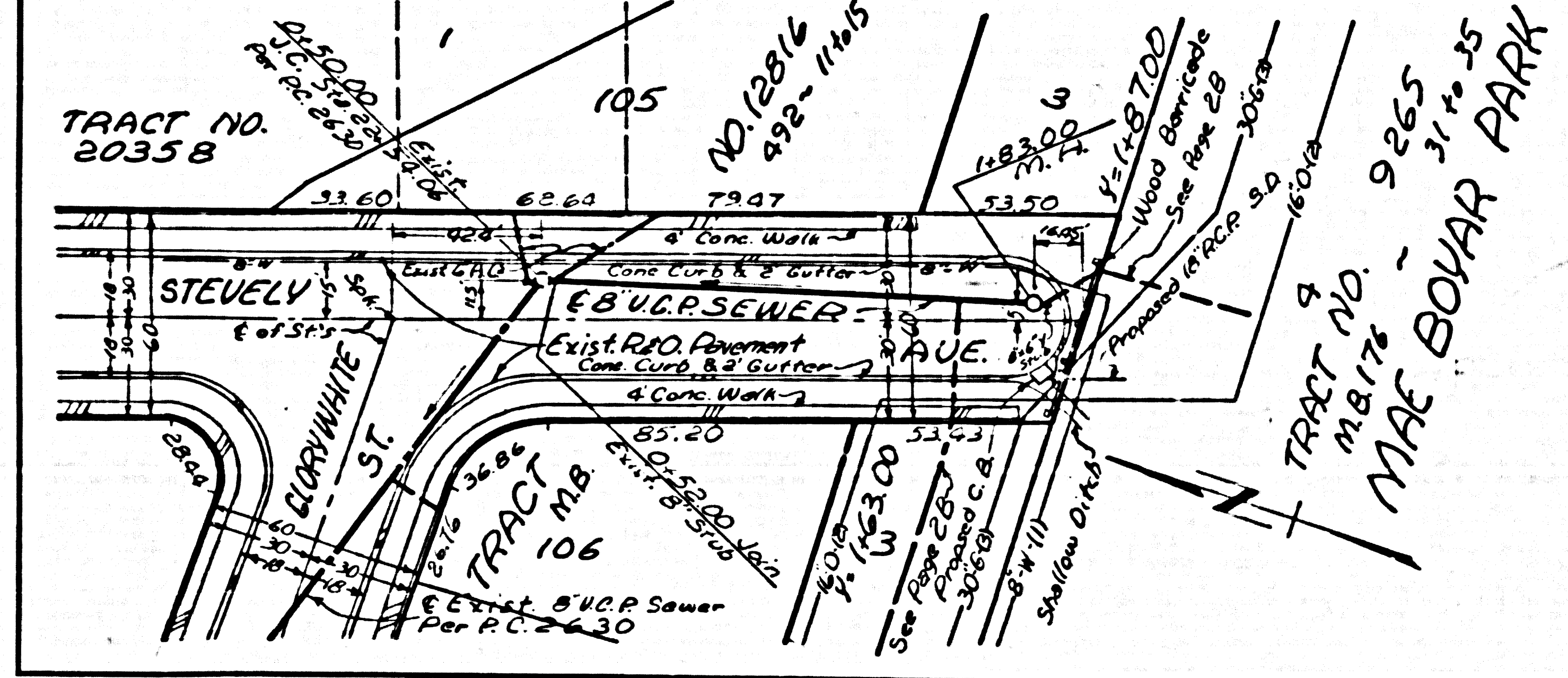


P.C. 7213 PAGE 2

NO CHARGE FOR CONNECTIONS

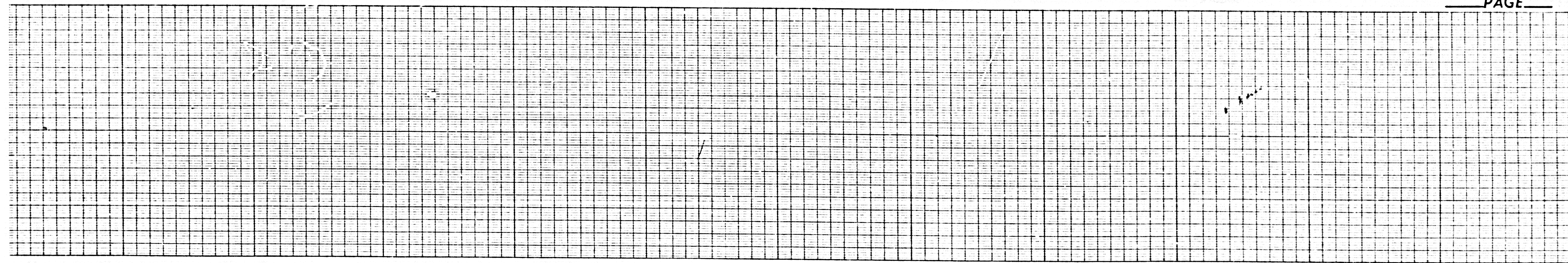
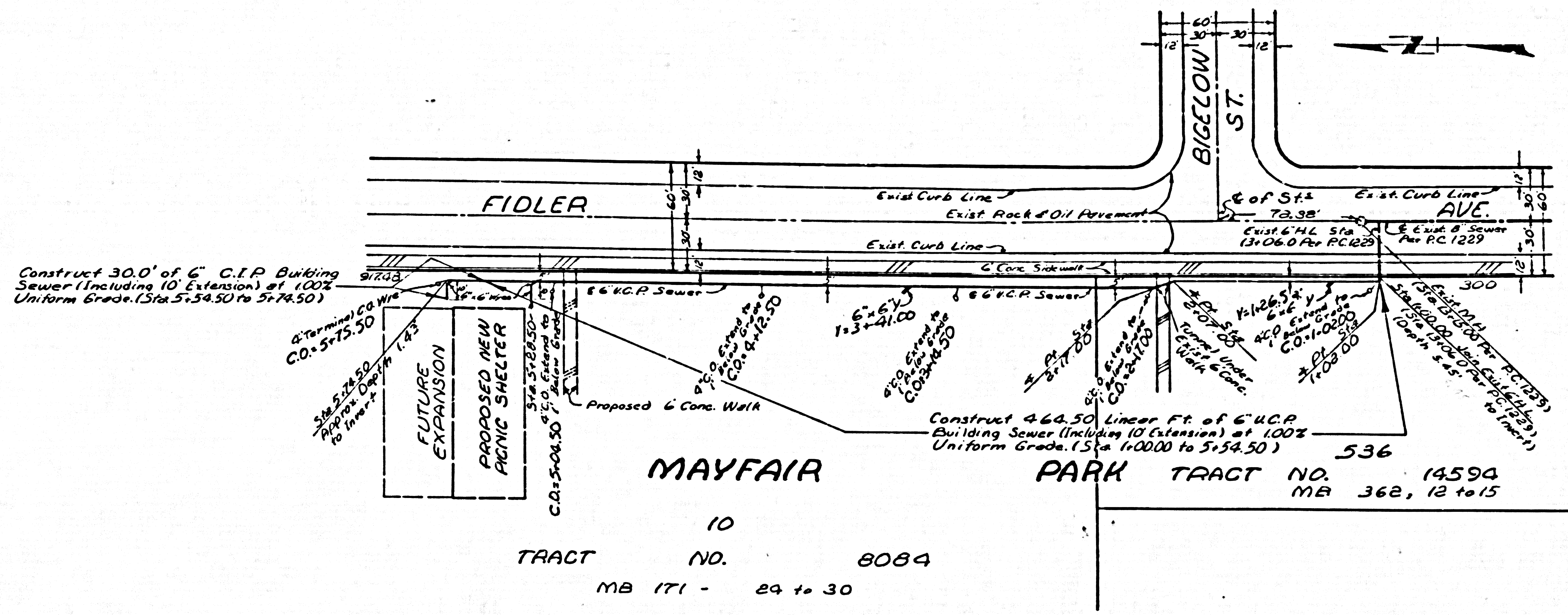
37163

NOTE:
6" Building Sewers to be constructed at Grades of not less than 2.00% in Street Properties and 1.00% in Other R.I.W's.

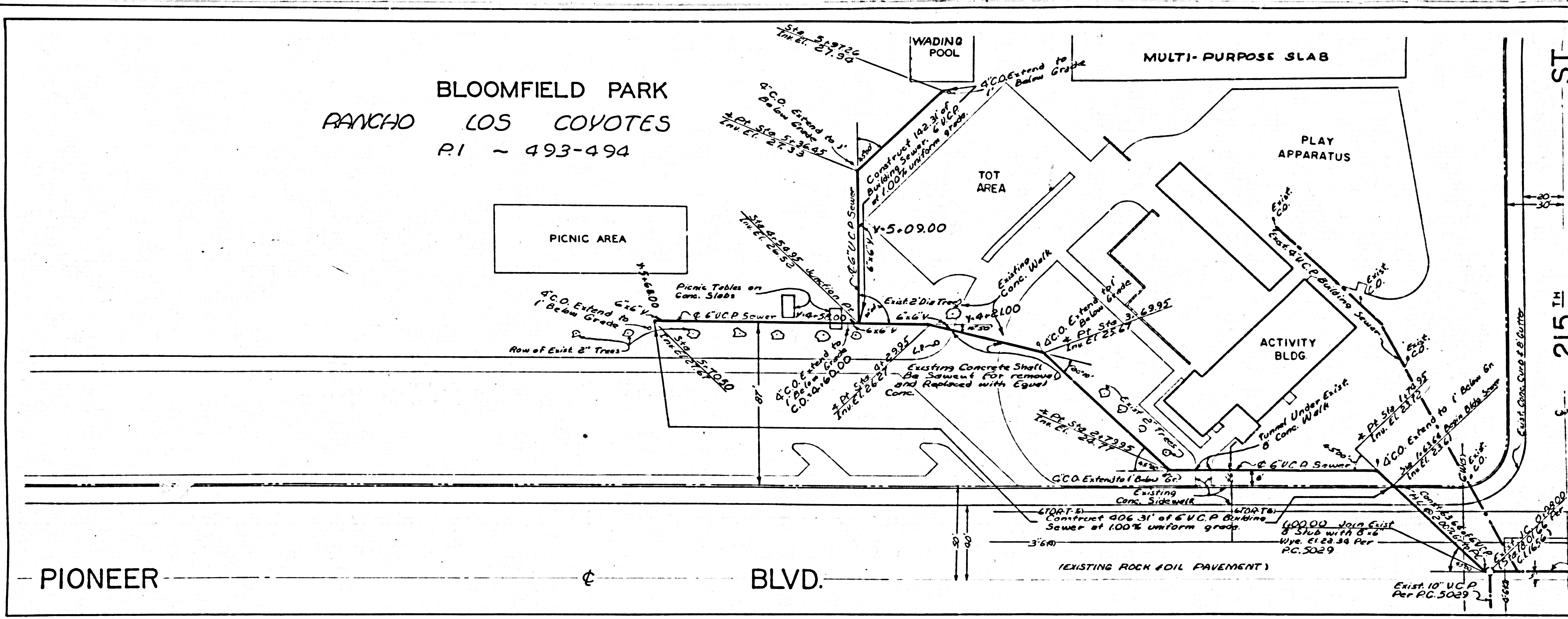


NO CHARGE FOR CONNECTIONS

37164

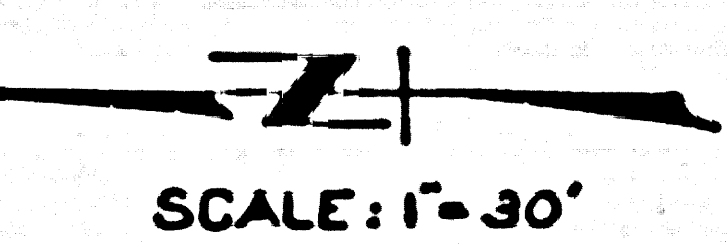


BLOOMFIELD PARK
 RANCHO LOS COYOTES
 P.I. - 493-494



NO CHARGE FOR CONNECTIONS

37165



215 TH ST.

PIONEER

BLVD.

293W32-7440