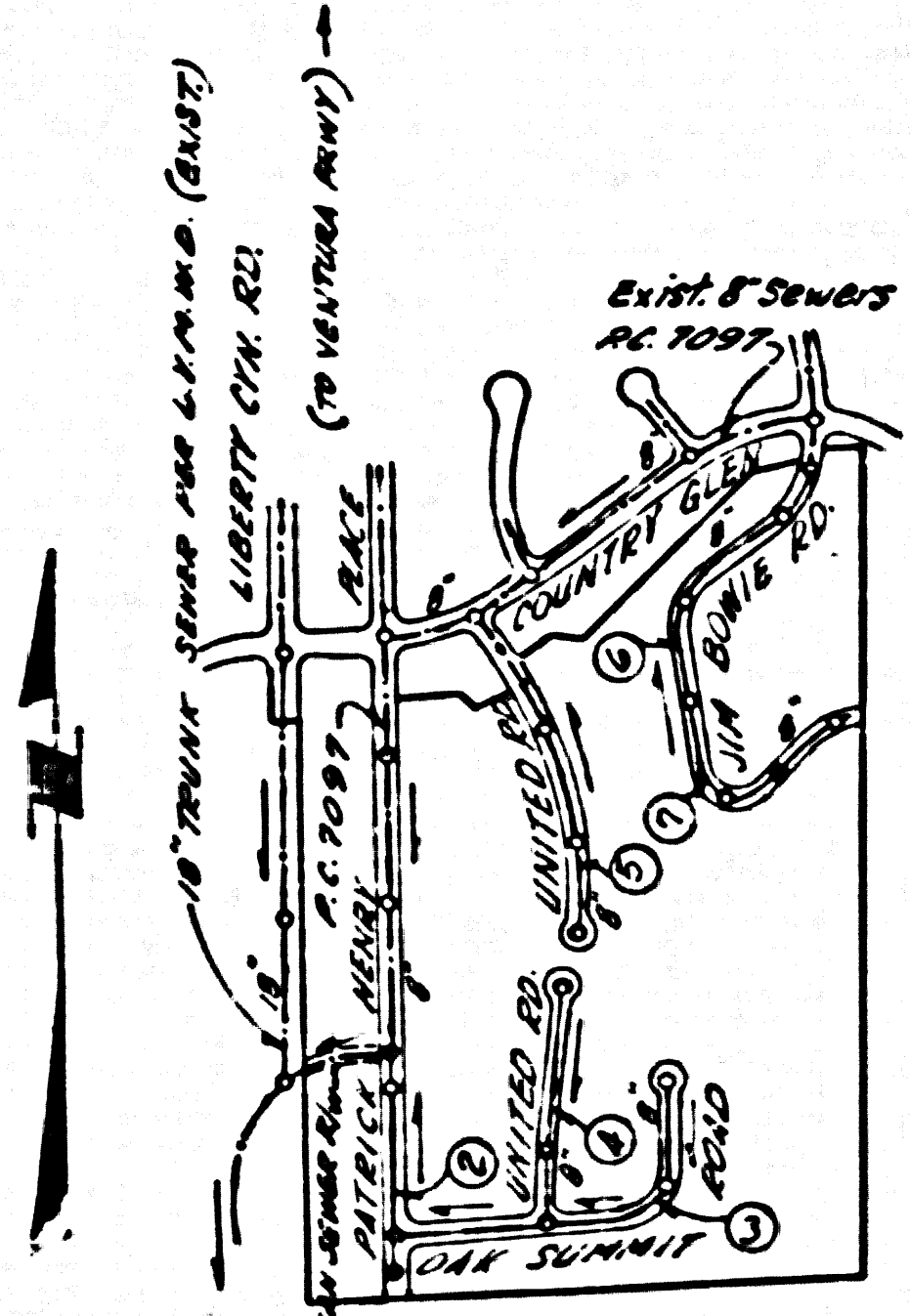


B.M. 87-7548 ELEV. 815.803  
 ST. HWY. MARK IN WELL 10 MI. ON ON  
 & LIBERTY CANYON BY RD.  
 UNDERCROSSING 30 FT. S. EASTBOUND  
 ON-107 SHARP TURNING P.K.  
 MALIBU QUAD. 1965



NOTE:  
 NUMBERS IN CIRCLES INDICATE  
 RISE NUMBERS

INDEX MAP  
 TRACT No. 29675  
 SCALE 1"=600'  
 P.C. 7214

THE ACCURACY OF THE LOCATION OF OR THE EXISTENCE OF NON-EXISTENCE OF ANY UTILITY PIPE OR STRUCTURE WITHIN THE LIMITS OF THIS PROJECT DOES NOT CONSTITUTE RESPONSIBILITY BY THE ENGINEER.

THE FOLLOWING COUNTY ENGINEER STANDARD PLANS APPLY TO THIS PROJECT:

- LEGEND
- MINIMUM EXCAVATION SAFETY REQUIREMENTS 8-1
  - BRICK MANHOLE 8-2
  - NON REINFORCED PRECAST CONCRETE MANHOLE 8-3
  - REINFORCED PRECAST CONCRETE MANHOLE 8-4
  - MANHOLE FRAME AND COVER 8-5
  - MANHOLE STEP 8-6
  - BEDDING FOR SEWER PIPE 8-7
  - CRADLING AND ENCASUREMENT 8-8
  - W/E OR TEE SUPPORT 8-9
  - ALLOWABLE TRENCH WIDTH 8-10

DOUBLE SCALE  
 CALABASAS BLDG. DIST. NO. 9.1

PROFILE ALIGNMENT AND GRADE OF P.C. 7214  
 SANITARY SEWERS PAGE 1  
 TO BE CONSTRUCTED IN  
 TRACT No. 29675  
 M. B. 738, 96-99

PRIVATE CONTRACT NO. 7214  
 W.S. 90  
 6 SHEETS, 7 PAGES  
 SCALE: VERT. 1"=4' HORIZ. 1"=40'  
 JULY, 1969  
 PREPARED IN THE OFFICES OF  
 MGINITRE & QUIROS INC.  
 REG. C. E. NO. 11758  
 FOR LEGEND SEE PLAN NO. S-1

- NOTE:
1. PROVIDE STAKES ON THE PROPERTY LINE OR PROPERTY LINES PRODUCED AT RIGHT ANGLES TO THE SEWER LINE AT THE CENTER LINE OF EACH MANHOLE.
  2. NO REPRESENTATIVE OF THE COUNTY ENGINEER WILL SURVEY OR LAY OUT ANY PORTION OF THE WORK.
  3. THE PRIVATE ENGINEER SHALL FURNISH THE COUNTY ENGINEER WITH GRADE SHEETS AND STATIONING FOR ALL HOUSE LATERALS AND T-Y BRANCHES AND SHALL PROVIDE STAKES FOR THEM AT THEIR PROPER LOCATIONS WITH STATIONING PLAINLY MARKED. ALL HOUSE LATERALS SHALL BE CONSTRUCTED IN A STAIRWAY ALIGNMENT AT RIGHT ANGLES FROM THE MAIN LINE IN WHATEVER DIRECTION SHOWN ON THE PLANS. HOUSE LATERALS FROM CHIMNEYS SHALL HAVE AN ANGLE OF LESS THAN 45° WITH THE MAIN LINE SEWER. ANY CHANGE IN ALIGNMENT SHALL BE REQUESTED BY WRITING BY THE PRIVATE ENGINEER.
  4. THE PRIVATE ENGINEER SHALL FURNISH THE HOUSE LATERAL DEPTH AT THE PROPERTY LINE BELOW THE TOP OF CURB OR GRADE FOR EACH HOUSE LATERAL ON THE GRADE SHEET.
  5. NO REVISIONS SHALL BE MADE IN THESE PLANS WITHOUT THE APPROVAL OF THE COUNTY ENGINEER.
  6. THE CONTRACTOR SHALL NOTIFY THE CONSTRUCTION DIVISION BY TELEPHONE, RADIOTELEPHONE 9-07-07, EXT. 888, AT LEAST TWENTY-FOUR HOURS BEFORE STARTING ANY WORK UNDER THIS CONTRACT.
  7. ALL STRUCTURES SHALL BE EITHER BRICK MANHOLES PER 8-3 OR PRECAST CONCRETE MANHOLES PER 8-4 OR 8-5, EXCEPT AS NOTED.
  8. "T" OR "Y" BRANCHES MAY BE USED FOR CONNECTIONS TO MAINLINE SEWERS EXCEPT AS NOTED.
  9. MANHOLE TOPS IN UNIMPROVED PORTIONS OF WAY TO BE SIX INCHES ABOVE FINISHED GRADE.
  10. THE BEST STRENGTH PIPE, ALL PIPE IS STANDARD DEPTH EXCEPT AS NOTED.
  11. VITRIFIED CLAY PIPE JOINTS SHALL BE TYPE "D" "T" OR "S" PER STD. SPEC. SEC. 808-2.
  12. IF A POWER POLE IS WITHIN THREE FEET OF THE SEWER, THE SEWER SHALL BE ENCASED, PER S-28, TWO FEET ON EACH SIDE FROM THE POINT OF INTERFERENCE.
  13. IF DURING THE COURSE OF CONSTRUCTION IT IS DETERMINED THAT THERE IS LESS THAN FOUR FEET OF COVER OVER THE TOP OF A MAIN LINE OR HOUSE LATERAL IN C.P. SEWER WHICH IS NOT INDICATED ON THE PLANS, THE PIPE SHALL BE ENCASED PER S-28 UNLESS OTHERWISE APPROVED BY THE COUNTY ENGINEER.
  14. HOUSE LATERALS TO BE CONSTRUCTED WITH INVERTS AT PROPERTY LINE, ... . NET BELOW CURB GRADE EXCEPT AS NOTED.
  15. SURFACE ALL TRENCHES WITHIN PAVED AREAS TO MEET L.A. COUNTY ROAD DEPT. OR CALIFORNIA STATE HIGHWAY REQUIREMENTS IN ACCORDANCE WITH PERMITS.
  16. SEWERS TO BE AIR PRESSURE TESTED PER SECT. 808-2.3.2.C OF THE STANDARD SPEC.
  17. REFER TO SECTION 7-10.4.1 OF THE STANDARD SPEC., REGARDING SAFETY ORDERS.
  18. ALL JOINTS BETWEEN CAST IRON PIPE AND VITRIFIED CLAY PIPE SHALL BE MADE WITH A RUBBER SLEEVE JOINT, TYPE "C" OR "D", (WITH BUSHING IF NECESSARY) PER STANDARD SPECIFICATIONS, SECTION 808-2.
  19. WHERE STATIONS IN CIRCLES APPEAR AT END OF HOUSE LATERALS, SUCH HOUSE LATERALS SHALL NOT BE CONSTRUCTED UPSTREAM OF THE STATION INDICATED IN THE CIRCLE.

3-20

COLLECT CHARGES  
 AS INDICATED

NOTE:  
 LOTS 65-69 ARE SERVED BY  
 EXIST. HOUSE LATERALS CONST.  
 UNDER PC 7097

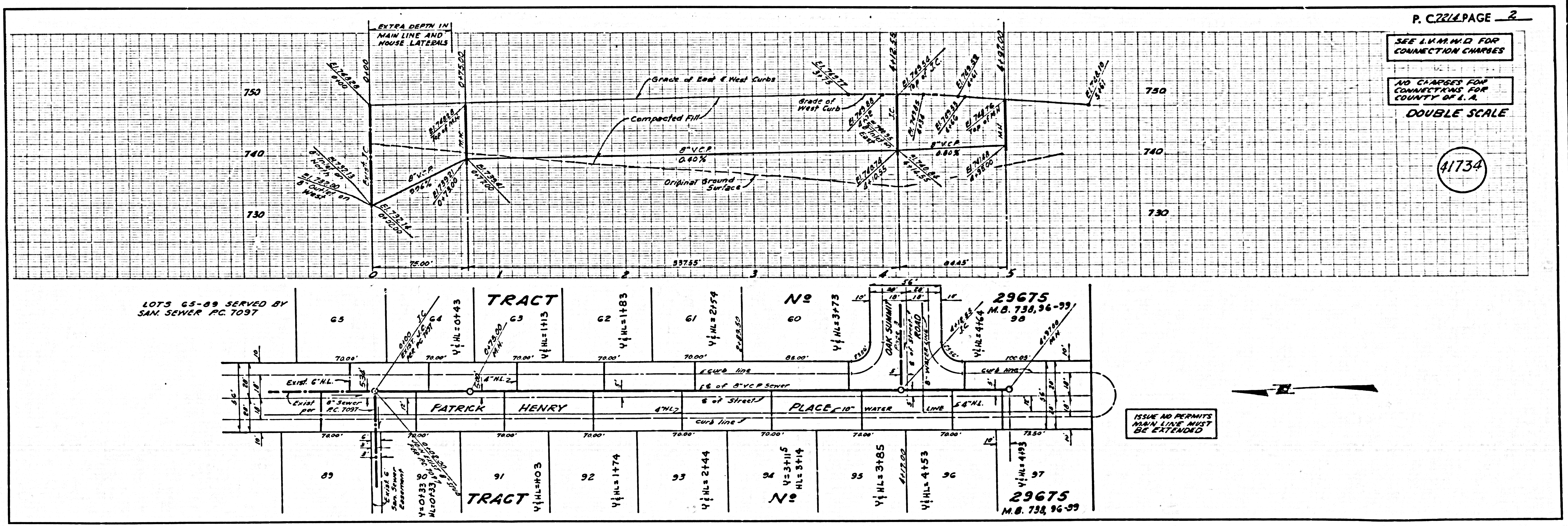
NOTE:  
 GRADES TO WHICH THIS IMPROVEMENT IS TO BE CONSTRUCTED ARE SHOWN ON PLANS AND PROFILES. GRADE POINTS FOR TOP OF CURBS, CENTER LINE OF STREETS, OR CENTER LINE OF ALLEYS ARE SHOWN BY CIRCLES ON PROFILES AT ALL POINTS BETWEEN DESIGNATED POINTS. THE GRADE SHALL BE ESTABLISHED SO AS TO CONFORM TO A STANDARD LINE DRAWN BETWEEN SAID DESIGNATED POINTS. SECTIONS ARE IN FEET ABOVE U.S.C. & G.S. SEA LEVEL DATUM OF 1929.  
 WORK SHALL BE CONSTRUCTED ACCORDING TO THE STANDARD SPECIFICATIONS FOR PUBLIC WORKS CONSTRUCTION AND SPECIAL PROVISIONS FOR THE CONSTRUCTION OF SANITARY SEWERS DATED JAN. 2, 1949, AS REVISED, AND SHALL BE PROSECUTED ONLY IN THE PRESENCE OF THE COUNTY ENGINEER.  
 BEFORE WORK CAN BE STARTED, THE CONTRACTOR MUST OBTAIN A PERMIT TO EXCAVATE IN COUNTY STREETS FROM THE L.A. COUNTY ROAD DEPT., DISTRICT OFFICE NO. ... AND PAY A FEE TO THE COUNTY ENGINEER, ROOM 388, COUNTY ENGINEERING BUILDING, 100 WEST SECOND STREET, LOS ANGELES, CALIF. ... ADDITIONAL OFFICE SUPERVISION TO COVER THE COST OF CONSTRUCTION INSPECTION AND RECORD PLANS.  
 APPROVAL OF THIS PLAN BY THE COUNTY OF LOS ANGELES DOES NOT CONSTITUTE A REPRESENTATION AS TO THE ACCURACY OF THE LOCATION OR THE EXISTENCE OR NON-EXISTENCE OF ANY UNDERGROUND UTILITY PIPE, OR STRUCTURE WITHIN THE LIMITS OF THIS PROJECT. THIS NOTE APPLIES TO ALL PAGES.  
 IF WORK IS TO BE DONE IN A STATE HIGHWAY A PERMIT MUST BE OBTAINED FROM THE STATE OF CALIFORNIA DIVISION OF HIGHWAYS, 100 SOUTH SPRING STREET, LOS ANGELES, CALIFORNIA.

COUNTY OF LOS ANGELES, CALIFORNIA  
 JOHN A. LAMBIE, COUNTY ENGINEER  
 LAB VIRGENES MUNICIPAL WATER DISTRICT  
 APPROVED BY: *Lawrence Miller* REGIONAL ENGINEER  
 APPROVED BY: *Red Stobbs* GENERAL SUPERVISOR - CHIEF ENGINEER

CHECKED BY: *J. N. O'Connell* 10-2-69  
 REG. C. E. NO. 14780

41733

J. N. O'364.71



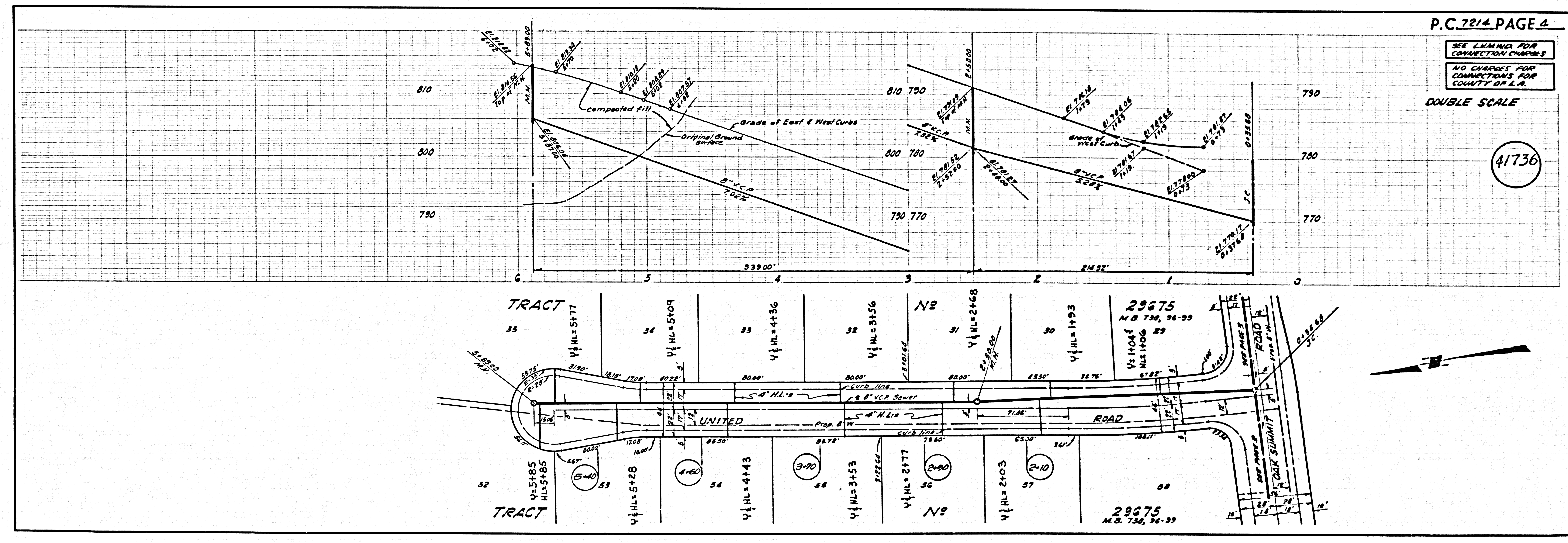
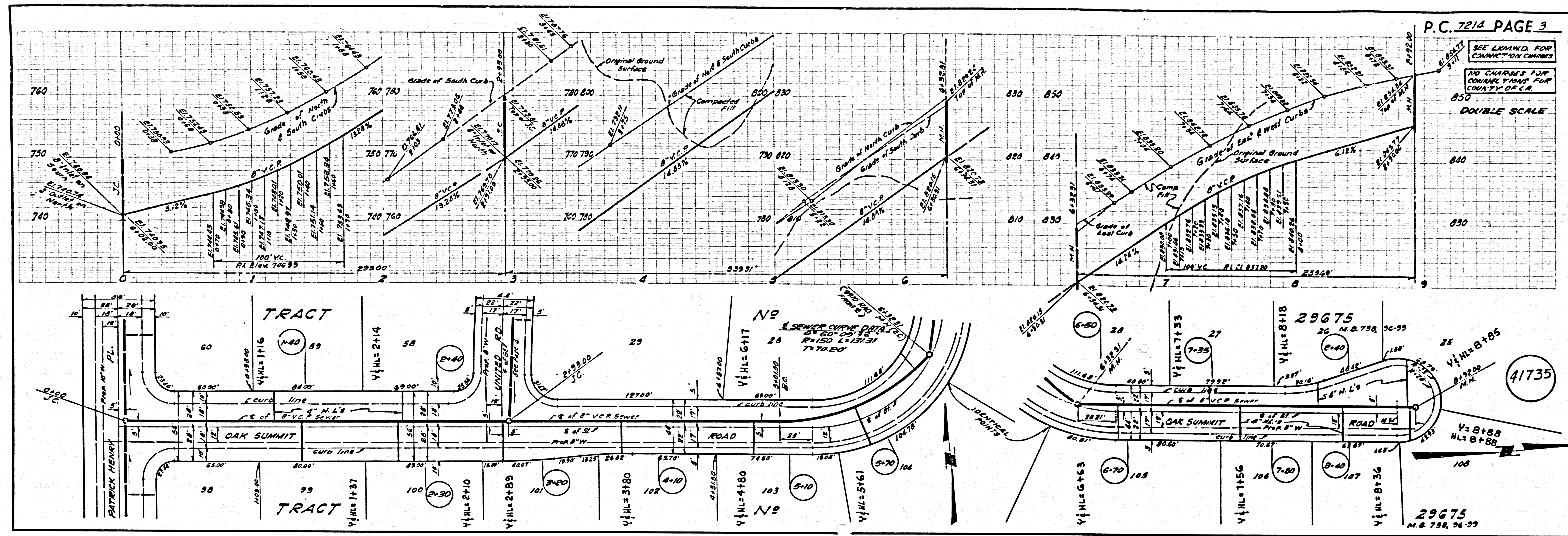
SEE I.V.M. & I.D. FOR  
 CONNECTION CHARGES

NO CHARGES FOR  
 CONNECTIONS FOR  
 COUNTY OF L. A.

DOUBLE SCALE

41734

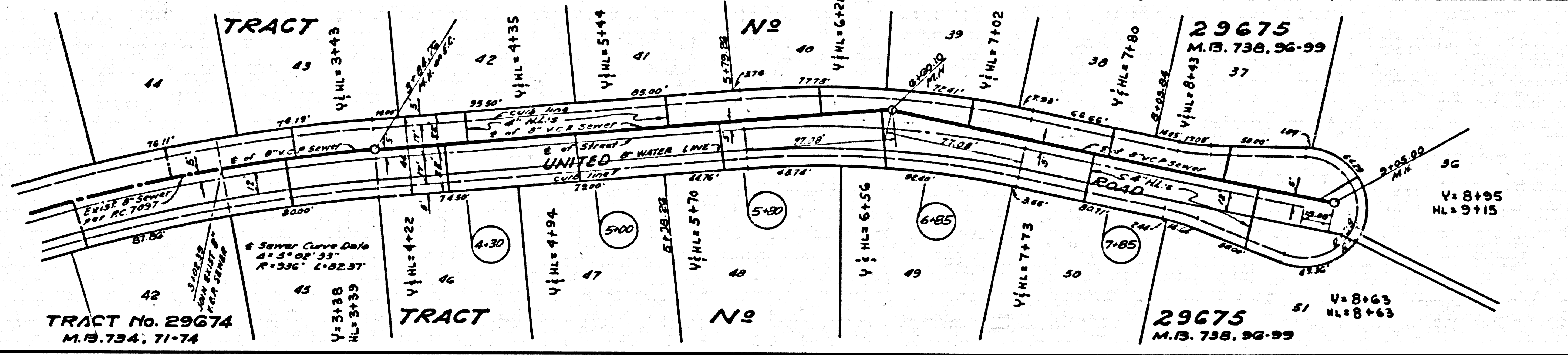
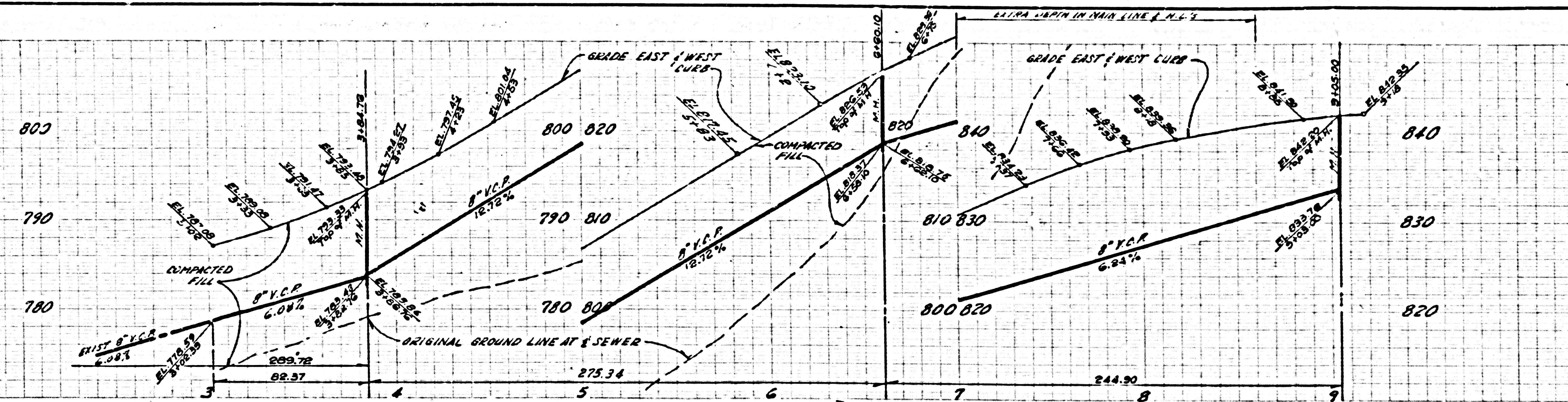
ISSUE NO PERMITS  
 MAIN LINE MUST  
 BE EXTENDED



SEE L.V.M.M.D. FOR CONNECTION CHARGES

NO CHARGES FOR CONNECTIONS FOR COUNTY OF L.A.

DOUBLE SCALE



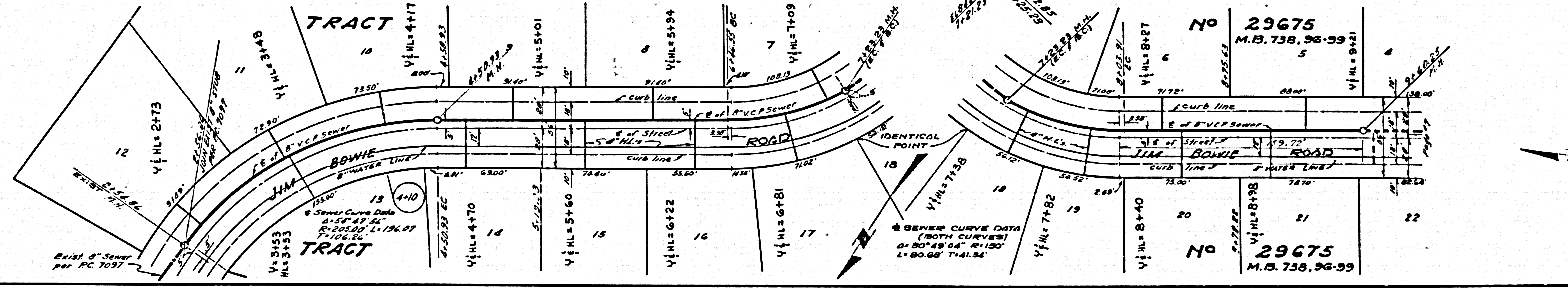
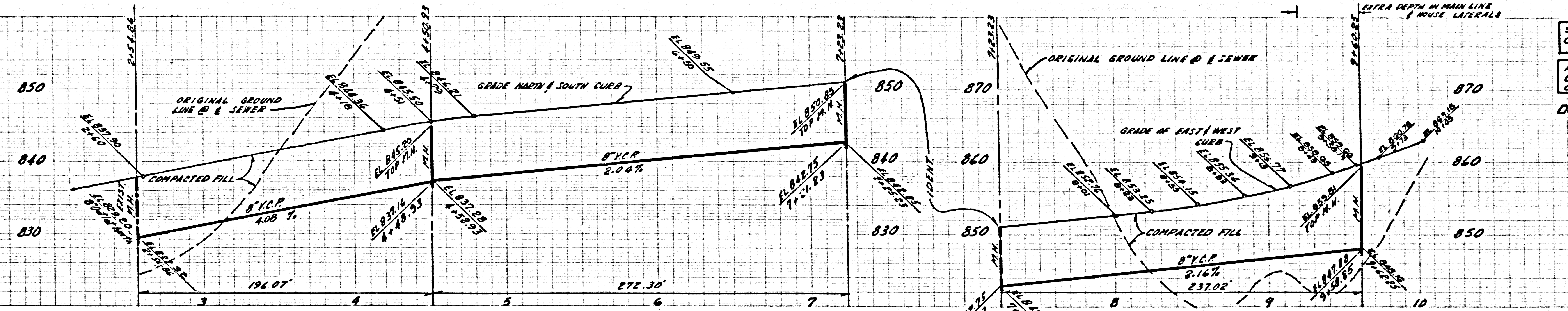
41737



SEE L.V.M.M.D. FOR CONNECTION CHARGES

NO CHARGES FOR CONNECTIONS FOR COUNTY OF L.A.

DOUBLE SCALE



41738



