

B.M. SY 3972 ELEV. 44.037
 Ad. USC. and O.S. Br. Cap. Mon. flush with
 ground 2.35' W. E. of Wilmington Ave. 1.65'
 N. Dry. to house N.P. 2011; Wilmington
 Ave. filed 11-7-80-1944.
 GARDENA QUAD. 19 60

NOTICE TO CONTRACTOR:
 The existence and location of any underground
 utility pipes or structures shown on these plans
 are obtained by a search of the available records.
 The Contractor is required to take due precautionary
 measures to protect the utility lines not of record
 or not shown on these plans.

LENNOX BLDG. DIST. NO. 7

PROFILE ALIGNMENT AND GRADE OF **P.C. 7216**
SANITARY SEWERS PAGE **1**
 TO BE CONSTRUCTED IN

TRACT N° 30331
PRIVATE CONTRACT NO. 7216

W.S. 26
 8 SHEETS, 10 PAGES
 SCALE: VERT. 1" = 4' HORIZ. 1" = 40'
 JULY, 1964

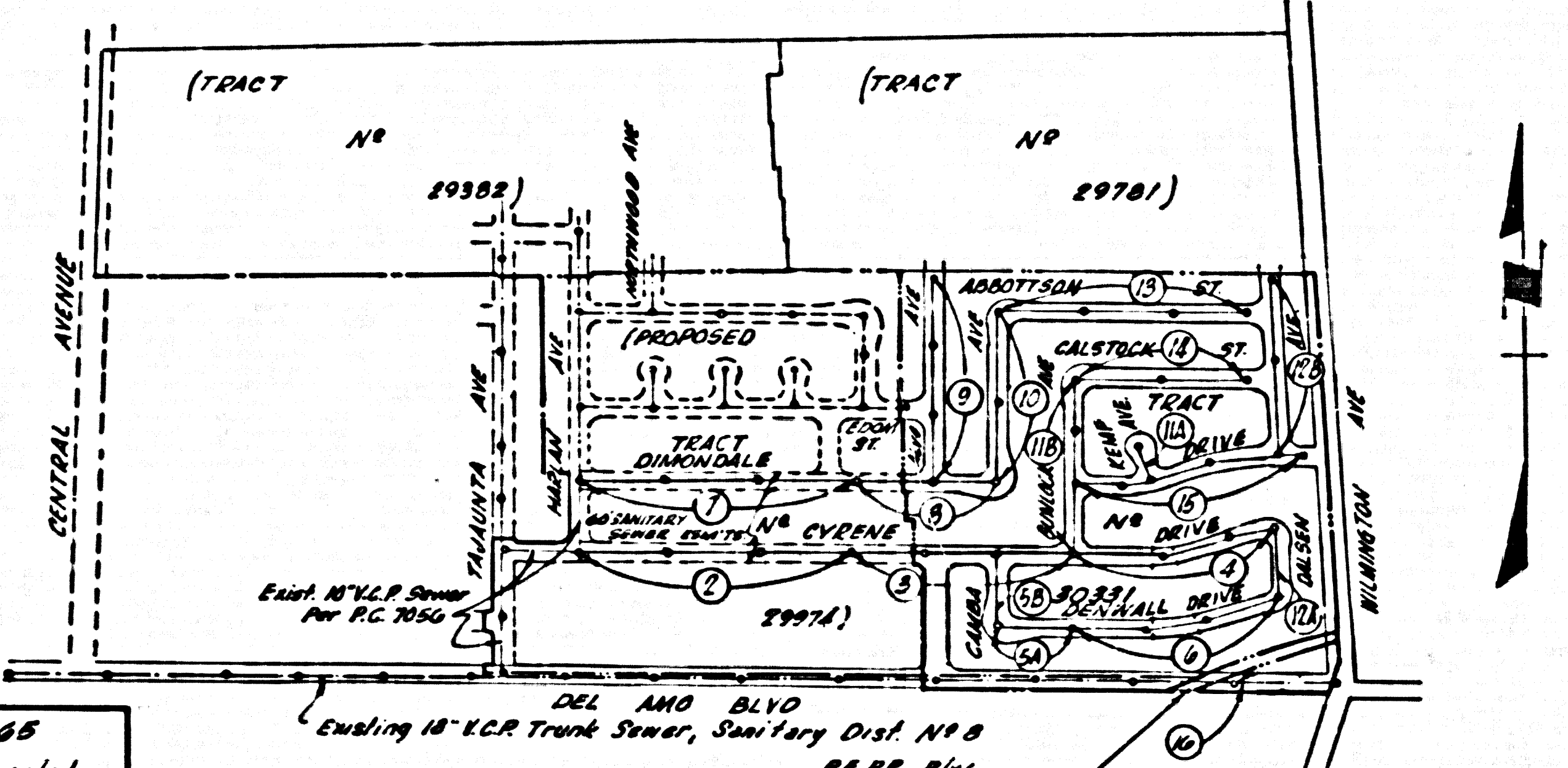
37004

PREPARED IN THE OFFICES OF
VOORHEIS-TRINDLE-NELSON
 13794 BEACH BLVD., WESTMINSTER, CALIF.
 BY *James E. Whitcomb* 12-17-64
 REG. C. E. NO. 14888

FOR LEGEND SEE PLAN NO. S-1

REVISION 5-7-65
 PAGE 16 - B' Sewer lowered, enclosed.
 10 of 8" V.C.P. changed to 8" C.I.P. due
 to 45' R.C.P.
 APPROVED: *Bernard Valdez*

REVISION: 4-8-65
 Page 6: Corrected Sta. 11+61.52 Page 15: Corrected
 Sta. 14+52.00 Page 18: CALIFEN AVE., corrected
 top curb to M.H. 11/4. Page 3: CYRENE DE., corrected
 top curb to M.H. 11/4.
 APPROVED: *John A. Lambie*



INDEX MAP
 SCALE: 1" = 600'
 P.C. 7216

- NOTES:**
1. PROVIDE STAKES ON THE PROPERTY LINE OR PROPERTY LINES PRODUCED AT RIGHT ANGLES TO THE SEWER LINE AT THE CENTER LINE OF EACH MANHOLE.
 2. NO REPRESENTATIVE OF THE COUNTY ENGINEER WILL SURVEY OR LAY OUT ANY PORTION OF THE WORK.
 3. THE PRIVATE ENGINEER SHALL FURNISH THE COUNTY ENGINEER WITH GRADE SHEETS AND STATIONING FOR ALL HOUSE LATERALS AND V BRANCHES AND SHALL PROVIDE STAKES FOR THEM AT THEIR PROPER LOCATIONS WITH BALCONDED PLAINLY MARKED. ALL HOUSE LATERALS SHALL BE CONSTRUCTED IN A STRAIGHT ALIGNMENT AT RIGHT ANGLES FROM THE MAIN LINE SEWER EXCEPT AS SHOWN ON THE PLANS. HOUSE LATERALS FROM CHIMNEYS SHALL NOT HAVE AN ANGLE OF LESS THAN 45° WITH THE MAIN LINE SEWER. ANY CHANGE IN ALIGNMENT SHALL BE INDICATED BY WRITING BY THE PRIVATE ENGINEER.
 4. THE PRIVATE ENGINEER SHALL FURNISH THE HOUSE LATERAL DEPTH AT THE PROPERTY LINE BELOW THE T&P OF CURB ELEVATION FOR EACH HOUSE LATERAL ON THE GRADE SHEET.
 5. NO REVISIONS SHALL BE MADE IN THESE PLANS WITHOUT THE APPROVAL OF THE COUNTY ENGINEER.
 6. THE CONTRACTOR SHALL NOTIFY THE CONSTRUCTION DIVISION BY TELEPHONE, MADISON 9-4747, EXT. 8155, AT LEAST TWENTY-FOUR HOURS BEFORE STARTING ANY WORK UNDER THIS CONTRACT.
 7. MANHOLES SHALL BE BRICK SEWER STRUCTURES PER S-2, PRECAST CONCRETE MANHOLES PER S-5 OR S-6 MAY BE USED AS AN ALTERNATE IN LOCATIONS APPROVED BY THE COUNTY ENGINEER.
 8. USE STANDARD MANHOLE FRAMES AND COVERS, S-4E, EXCEPT AS NOTED.
 9. MANHOLE TOPS IN IMPROVED RIGHTS-OF-WAY TO BE SIX INCHES ABOVE FINISHED GRADE.
 10. USE EXTRA STRENGTH PIPE ALL PIPE IN STANDARD DEPTH EXCEPT AS NOTED.
 11. USE MECHANICAL COMPRESSION JOINTS FOR ALL V.C.P. JOINTS PER SPEC'S, SECS. 86, 48 & 49.
 12. V THE FIVE GRADE WATER IS ENCOUNTERED DURING THE CONSTRUCTION OF THE SEWER, THE V.C.P. JOINTS SHALL BE OF JOINT COMPOUND PER SPEC'S, SECS. 33 & 44, OR MECHANICAL COMPRESSION JOINTS PER SPEC'S, SEC. 24.
 13. IF A POWER POLE IS WITHIN FIVE FEET OF THE SEWER, THE SEWER SHALL BE ENCASED, PER S-23, TWO FEET ON EITHER SIDE FROM THE POINT OF INTERFERENCE.
 14. IF DURING THE COURSE OF CONSTRUCTION IT IS DETERMINED THAT THERE IS LESS THAN FOUR FEET OF COVER OVER THE TOP OF A MAIN LINE OR HOUSE LATERAL V.C.P. SEWER WHICH IS NOT INDICATED ON THE PLANS, THE PIPE SHALL BE ENCASED PER S-23 UNLESS OTHERWISE APPROVED BY THE COUNTY ENGINEER.
 15. HOUSE LATERALS TO BE CONSTRUCTED WITH INVERTS AT PROPERTY LINE ... FEET BELOW CURB GRADE EXCEPT AS NOTED.
 16. RESURFACE ALL TRENCHES WITHIN PAVED AREAS TO MEET L.A. COUNTY ROAD DEPT. OR CALIFORNIA STATE HIGHWAY REQUIREMENTS IN ACCORDANCE WITH PERMITS.
 17. FOR ALLOWABLE LEAKAGE TEST USE FORMULA NO. ... SPEC'S, SEC. 84.
 18. ALL STATE & LOCAL TRENCH SAFETY ORDERS WILL BE RIGIDLY ENFORCED.
 19. CONSTRUCTION IN FILLED AREAS:
 - (a) AN ACCEPTABLE CERTIFICATION OF COMPACTION TEST RESULTS SHALL BE SUBMITTED TO THE CONSTRUCTION DIVISION. COMPACTION TESTS ARE TO BE MADE IN ACCORDANCE WITH A.S.T.M. STANDARD METHOD OF TEST D-690-67.
 - (b) NO CONSTRUCTION IS PERMITTED IN FILLED AREAS WHERE THE RELATIVE DENSITY OF COMPACTION IS LESS THAN 80%.
 - (c) IF THE RELATIVE DENSITY OF COMPACTION IS LESS THAN 80%, ALL MAIN LINE AND HOUSE LATERALS SHALL BE ENCASED PER S-23. IF HAVE A SPECIAL BASE COURSE PER S-21 CASE III, SPECIAL MANHOLE BASES PER S-16, NOT REQUIRED.
 - (d) IF THE RELATIVE DENSITY OF COMPACTION IS 80% OR GREATER, THE SPECIAL PROVISIONS IN (C) ARE NOT REQUIRED.

COLLECT CHARGES AS INDICATED
Edward J. Finner 3/9/65

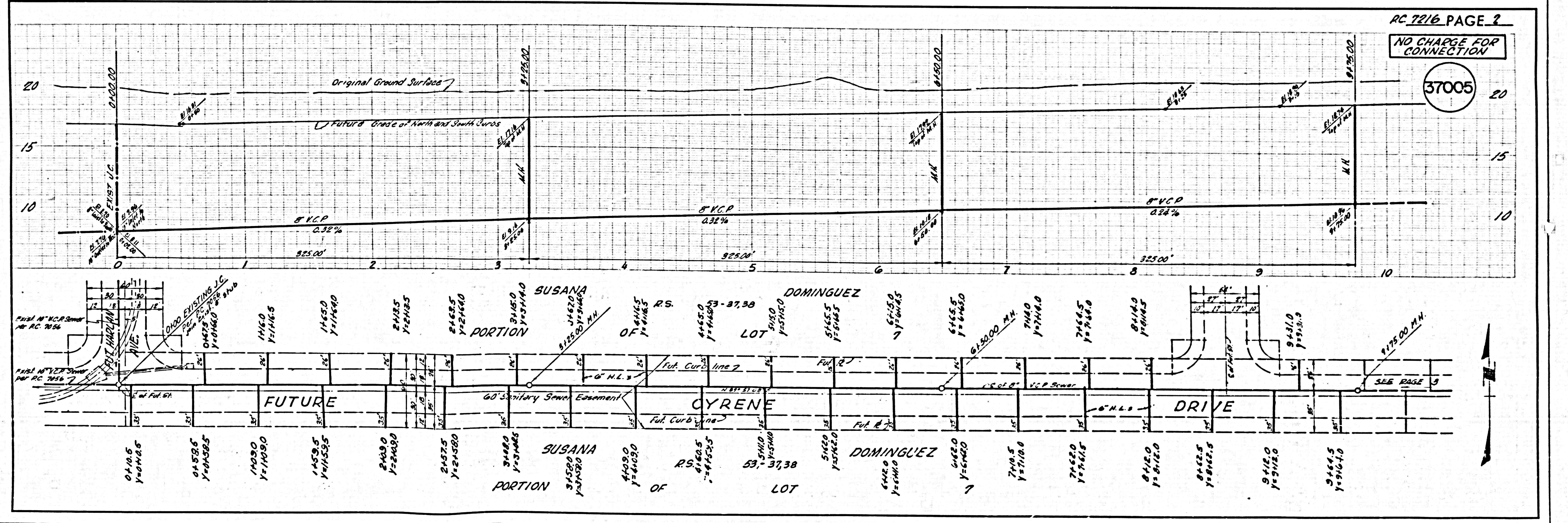
NO CONNECTIONS FOR THE DISPOSAL OF INDUSTRIAL WASTES SHALL BE MADE TO SEWERS SHOWN ON THESE DRAWINGS WITHOUT WRITTEN PERMISSION FROM THE CHIEF ENGINEER AND GENERAL MANAGER OF THE COUNTY SANITATION DISTRICTS.

NOTES:
 GRADES TO WHICH THE IMPROVEMENT IS TO BE CONSTRUCTED ARE SHOWN ON PLANS AND PROFILES. GRADE POINTS FOR TOP OF CURB, CENTER LINE OF STREETS, OR CENTER LINE OF ALLEYS ARE SHOWN BY CHECKS ON PROFILES AT ALL POINTS BETWEEN DESIGNATED POINTS. THE GRADE SHALL BE ESTABLISHED SO AS TO CONFORM TO A STRAIGHT LINE DRAWN BETWEEN SAID DESIGNATED POINTS. THE DRAWINGS AND THE DATA HEREON ARE HEREBY MADE A PART OF THE SPECIFICATIONS. WORK SHALL BE CONSTRUCTED ACCORDING TO STANDARD SPECIFICATIONS DATED MAY 21, 1952, ON FILE IN THE OFFICE OF THE COUNTY ENGINEER AND SHALL BE PROTECTED ONLY IN THE PRESENCE OF THE COUNTY ENGINEER. BEFORE WORK CAN BE STARTED, THE CONTRACTOR MUST OBTAIN A PERMIT TO EXCAVATE IN COUNTY STREETS FROM THE L.A. COUNTY ROAD DEPT., DISTRICT OFFICE NO. 5, AND PAY TO THE COUNTY ENGINEER, ROOM 300, COUNTY BUILDING, BRUNINGTON OFFICE, BRUNINGTON, CALIF., ... A FEE TO COVER THE COST OF APPROVAL OF THIS PLAN BY THE COUNTY OF LOS ANGELES. BEFORE ANY CONTRACTOR'S REPRESENTATION AS TO THE ACCURACY OF THE LOCATION OF OR THE EXISTENCE OR NON-EXISTENCE OF ANY UNDERGROUND UTILITY PIPE, OR STRUCTURE WITHIN THE LIMITS OF THIS PROJECT, THIS NOTE APPLIES TO ALL PAGES. IF WORK IS TO BE DONE IN A STATE HIGHWAY, A PERMIT MUST BE OBTAINED FROM THE STATE OF CALIFORNIA, DIVISION OF HIGHWAYS, 120 SOUTH SPRING STREET, LOS ANGELES, CALIFORNIA.

COUNTY OF LOS ANGELES, CALIFORNIA
 JOHN A. LAMBIE, COUNTY ENGINEER
 J. D. PARKHURST, CHIEF ENGINEER
 CO. SAN. DIST. NO. 7
 APPROVED BY: *John A. Lambie* OFFICE ENGINEER

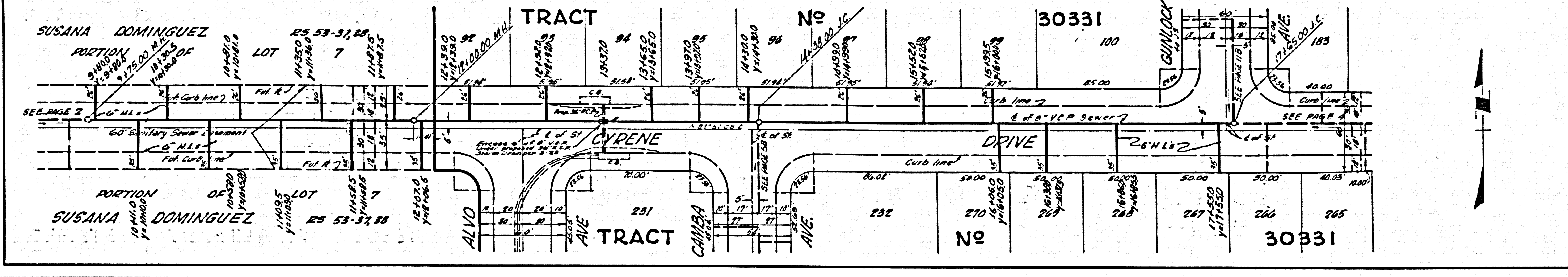
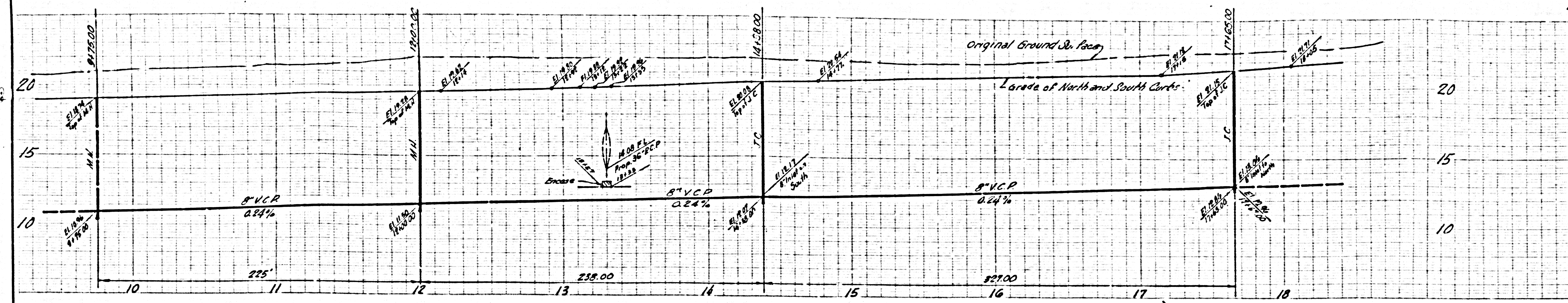
APPROVED BY: *James E. Whitcomb* OFFICE ENGINEER
 SUBMITTED BY: *John A. Lambie* OFFICE ENGINEER
 CHECKED BY: *Bernard Valdez* OFFICE ENGINEER
 REG. C.E. NO. 10653

J. N. 0364.72

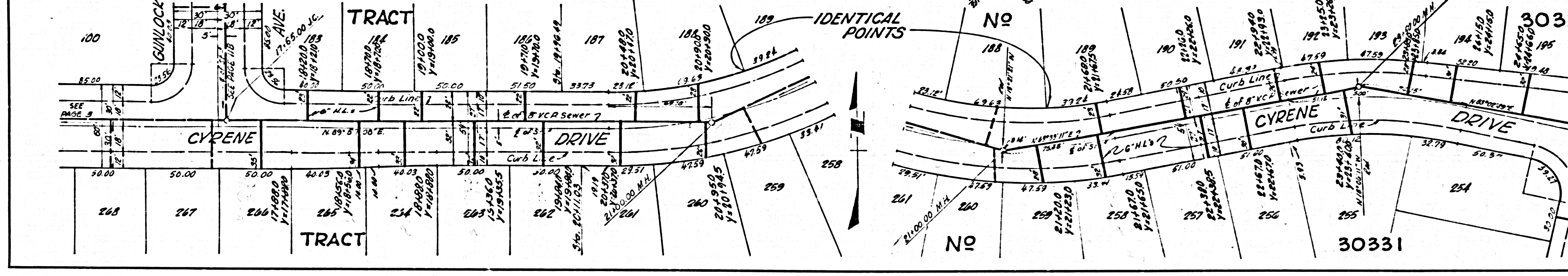
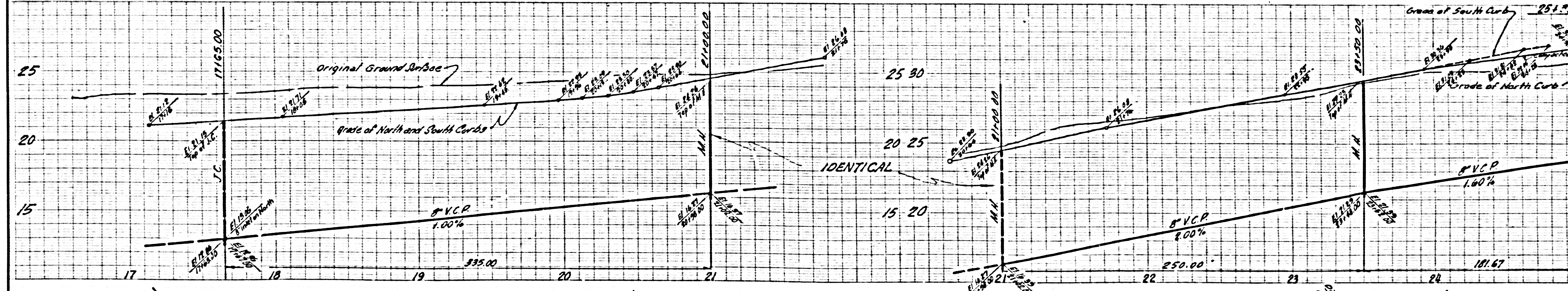


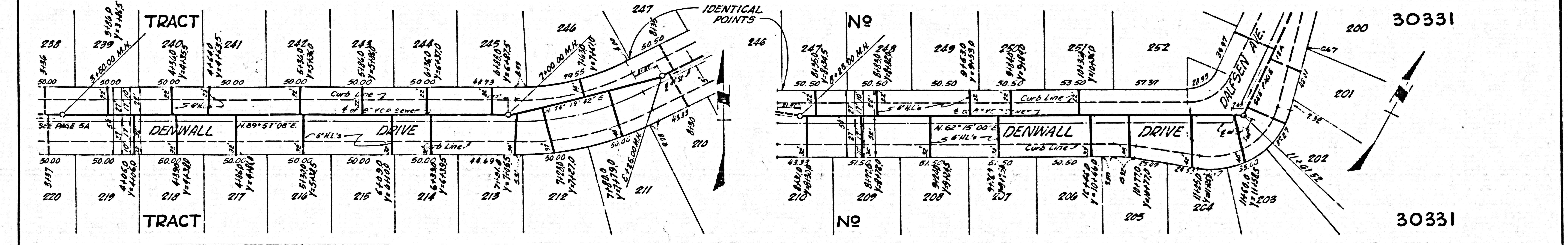
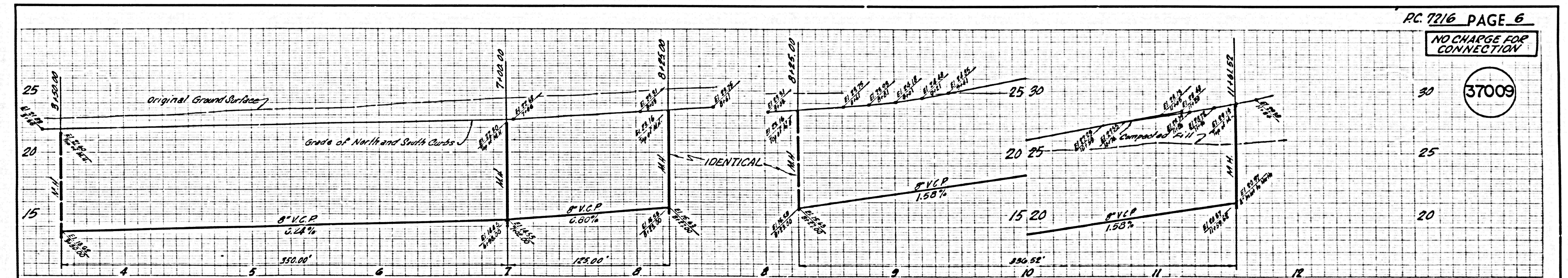
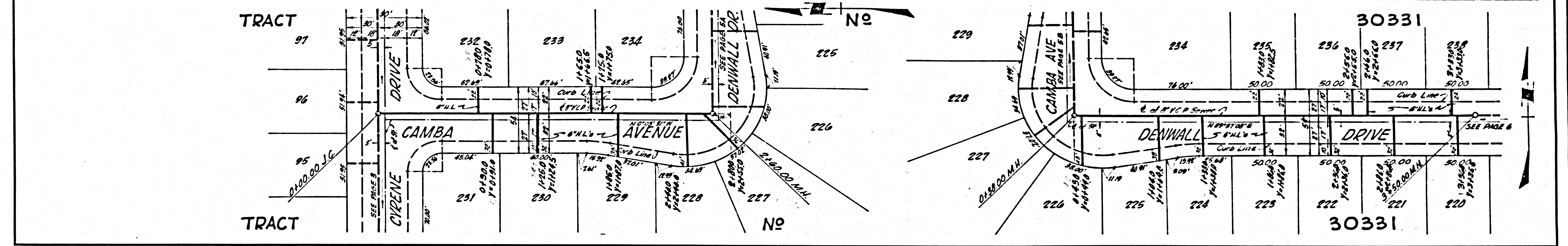
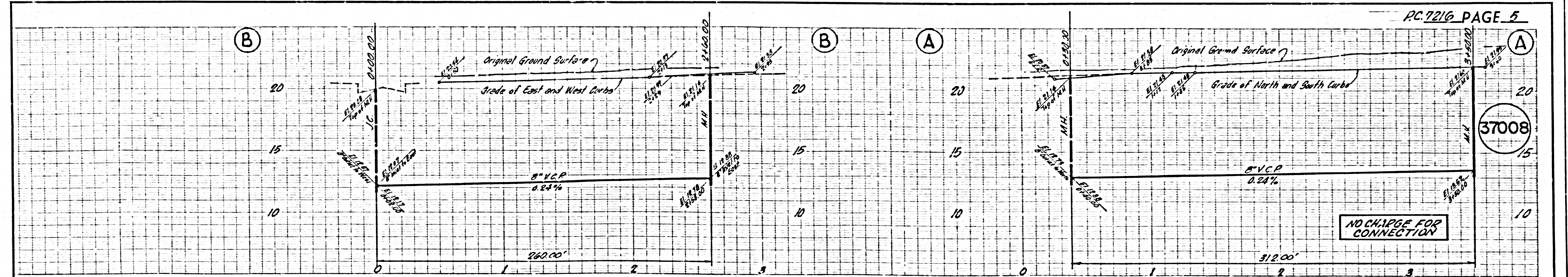
RC 7216 PAGE 2
 NO CHARGE FOR CONNECTION
37005

NO CHARGE FOR CONNECTION
37006

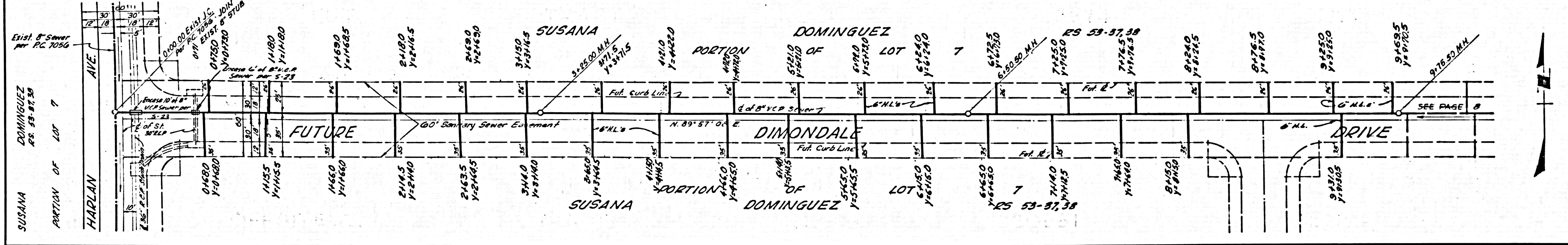
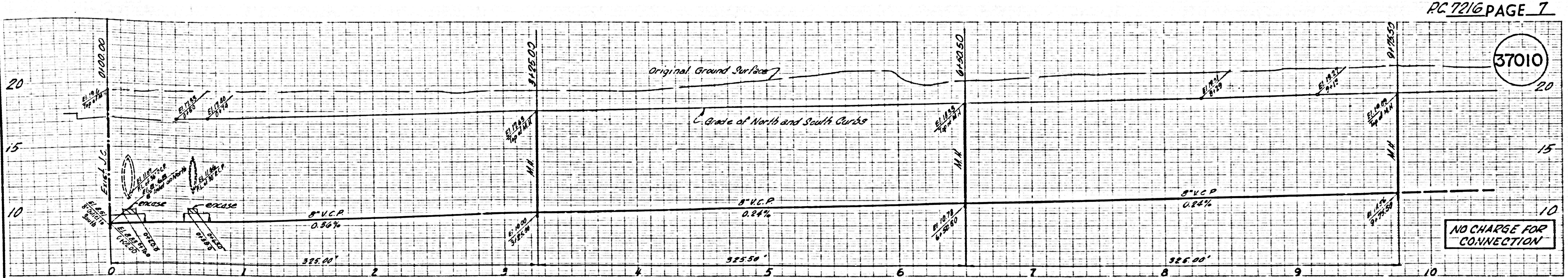


NO CHARGE FOR CONNECTIONS
37007

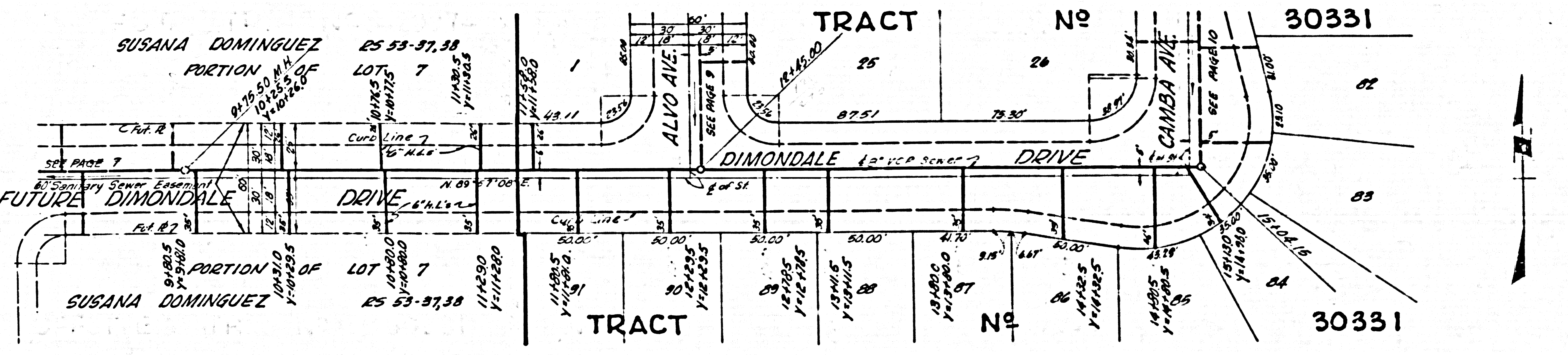
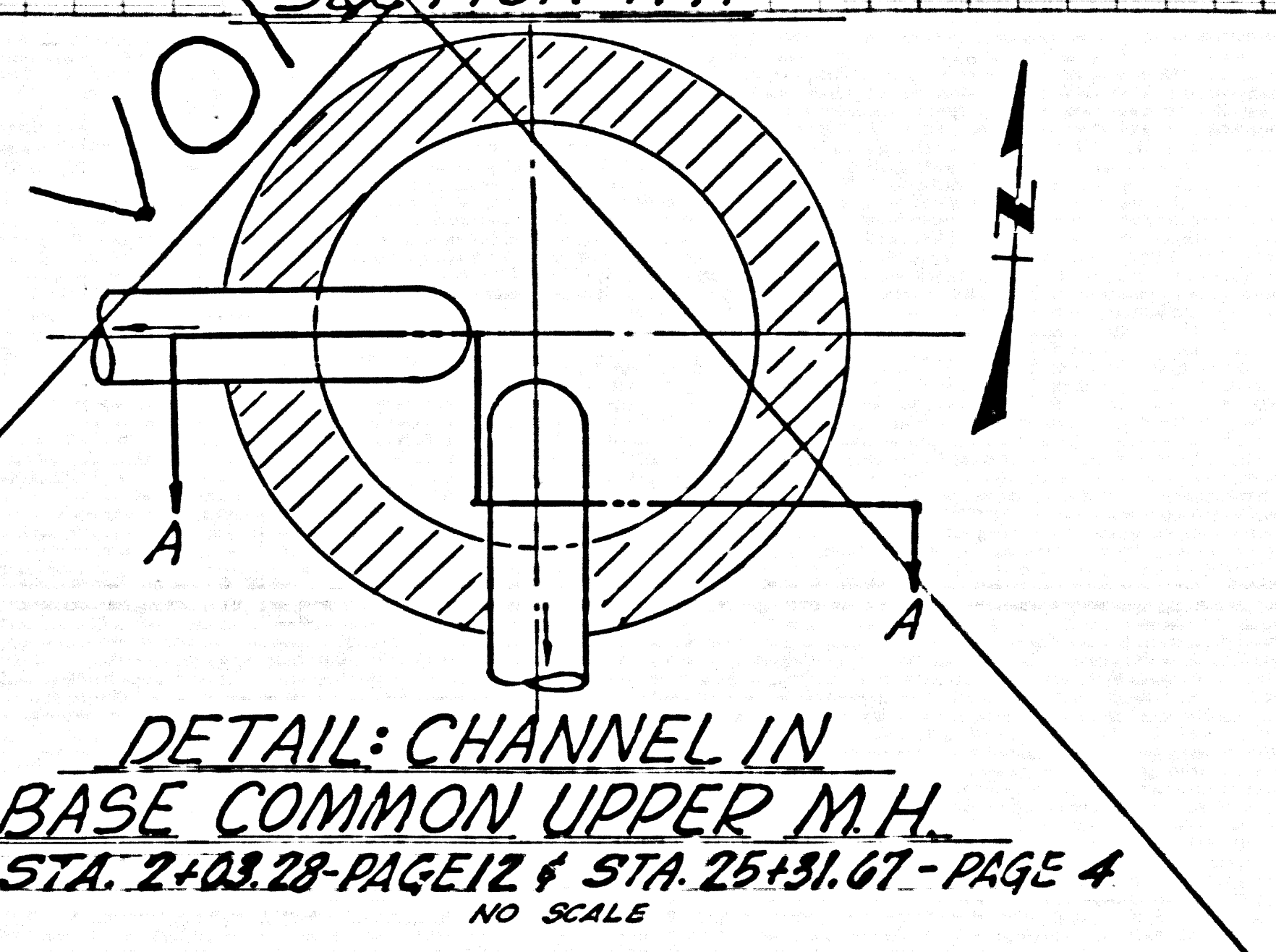
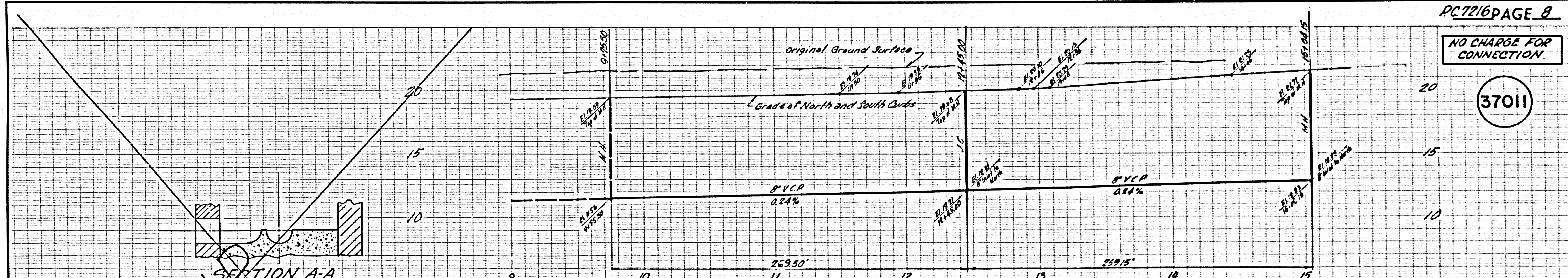




37010

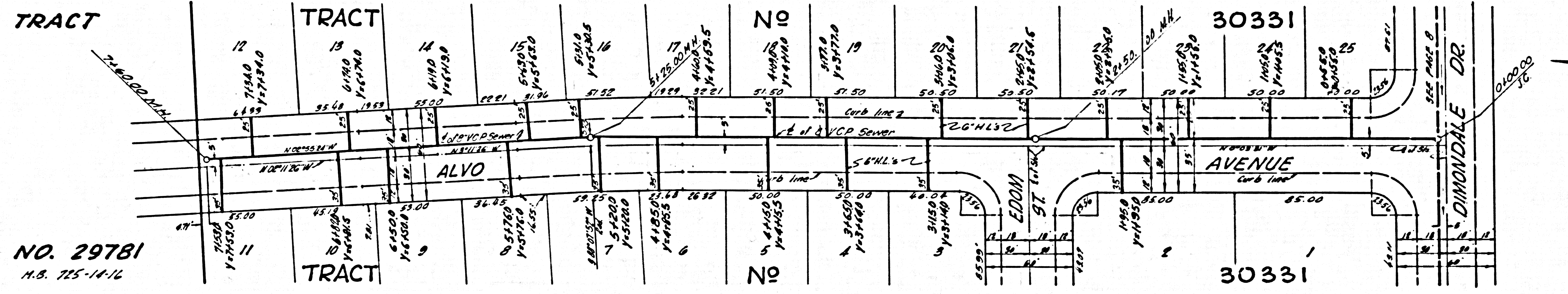
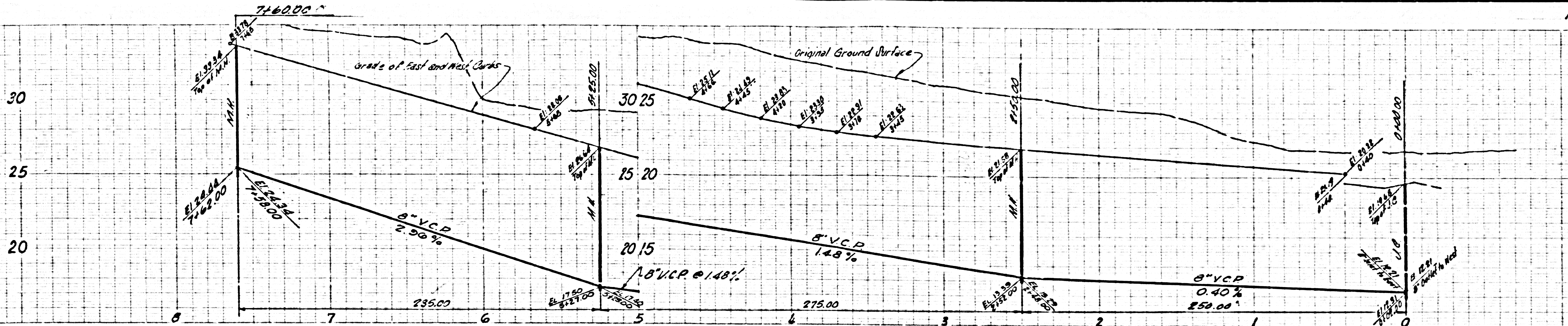


37011



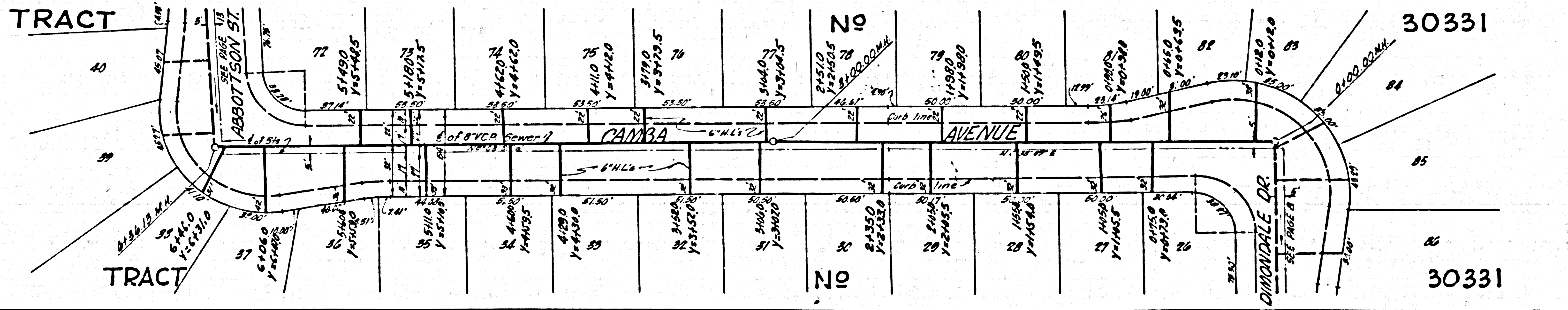
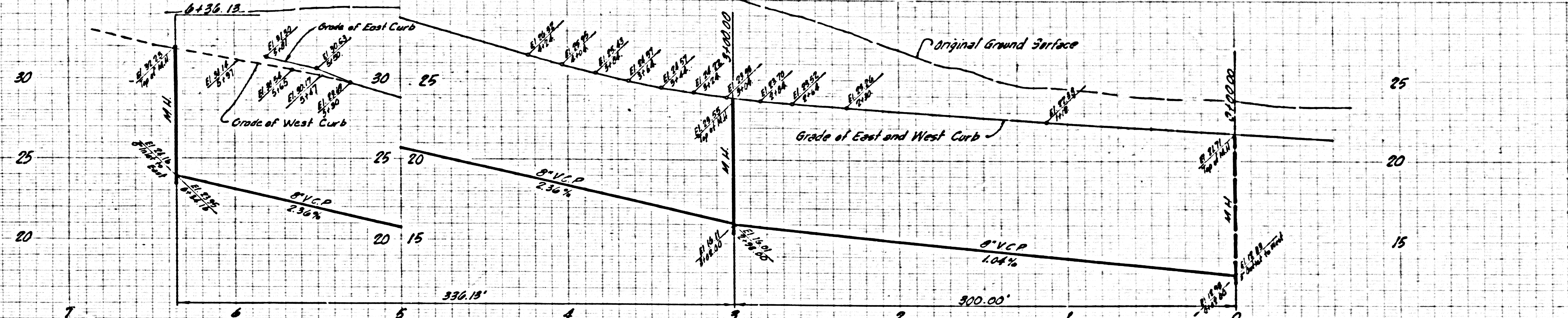
NO CHARGE FOR CONNECTION

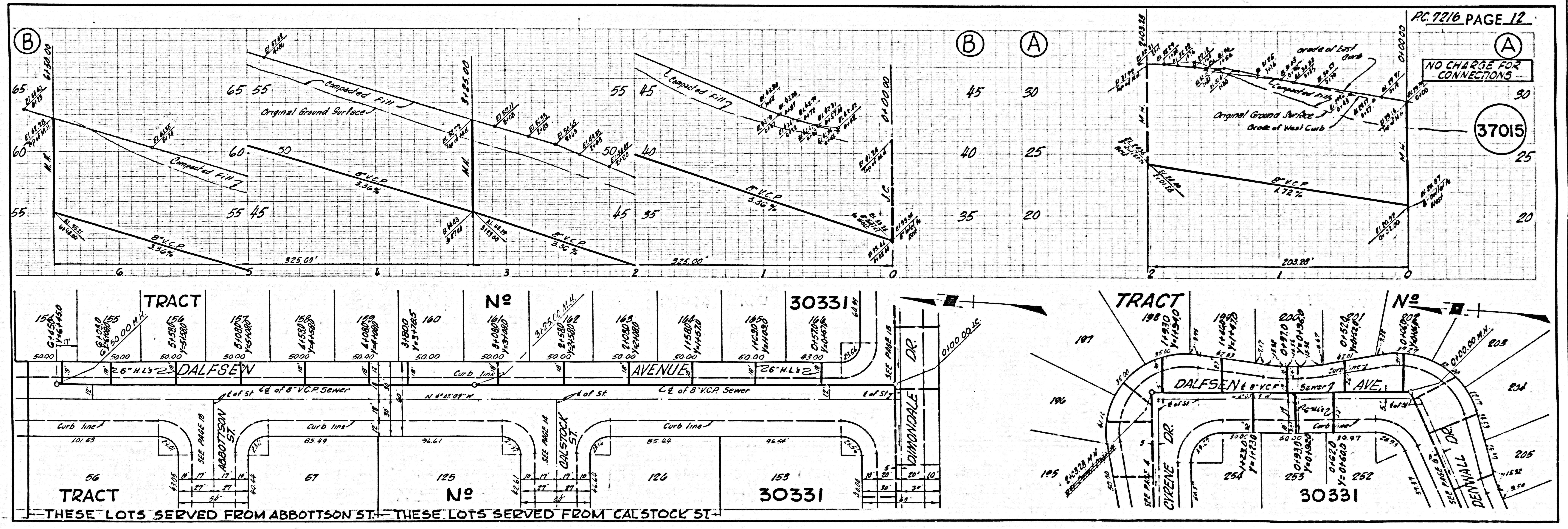
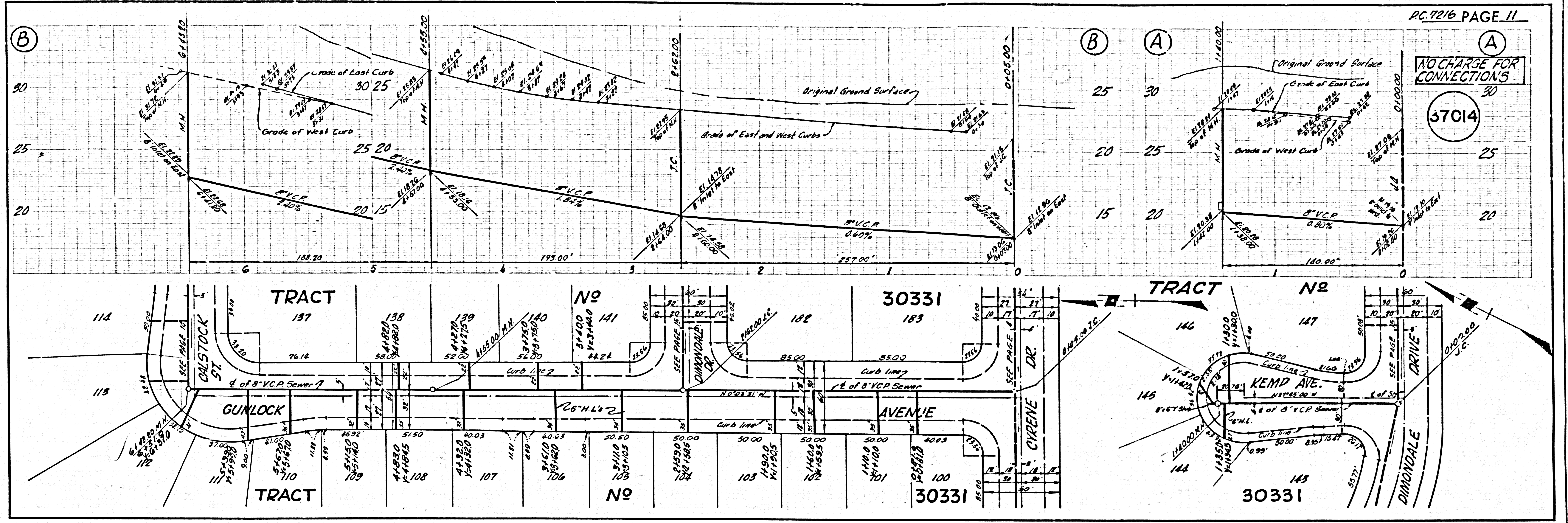
37012



NO CHARGE FOR CONNECTION

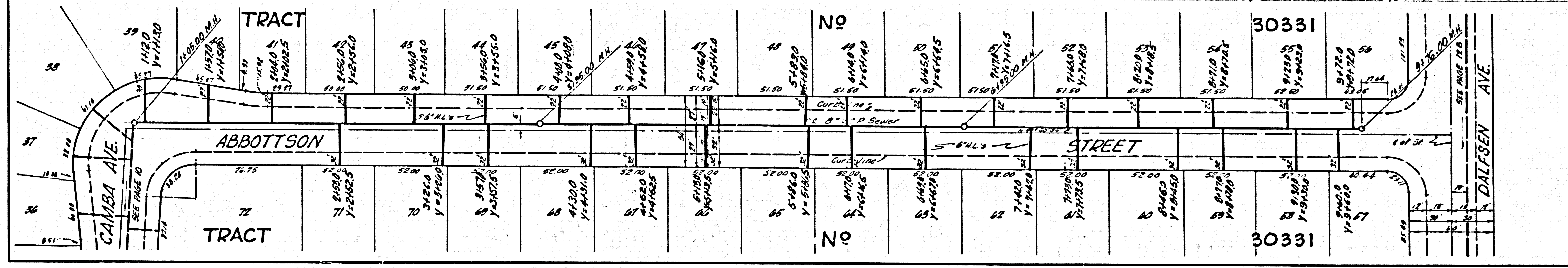
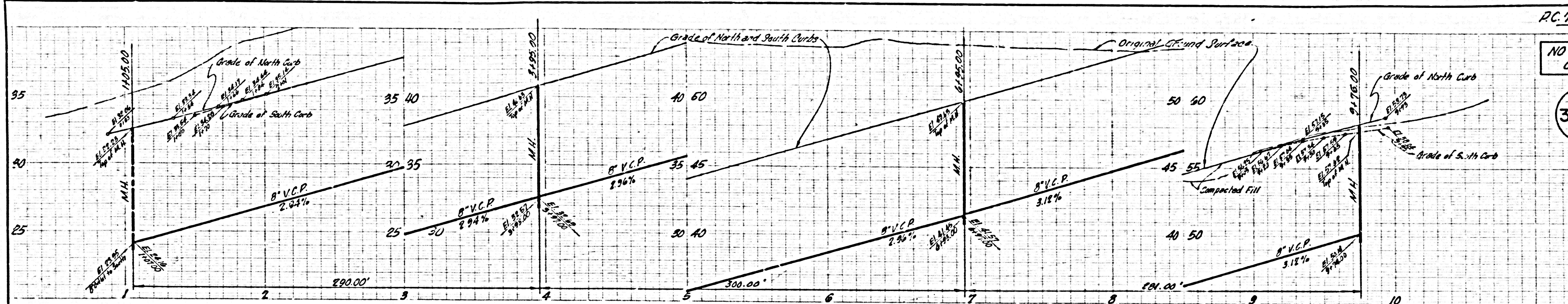
37013





NO CHARGE FOR CONNECTION

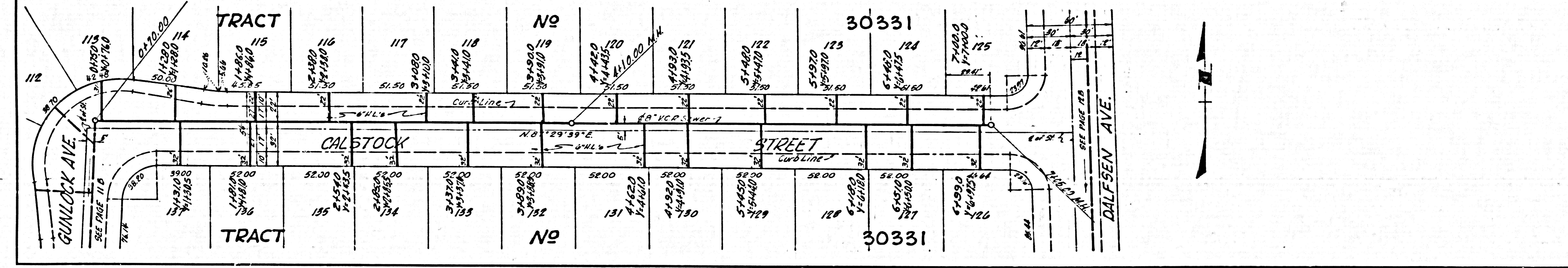
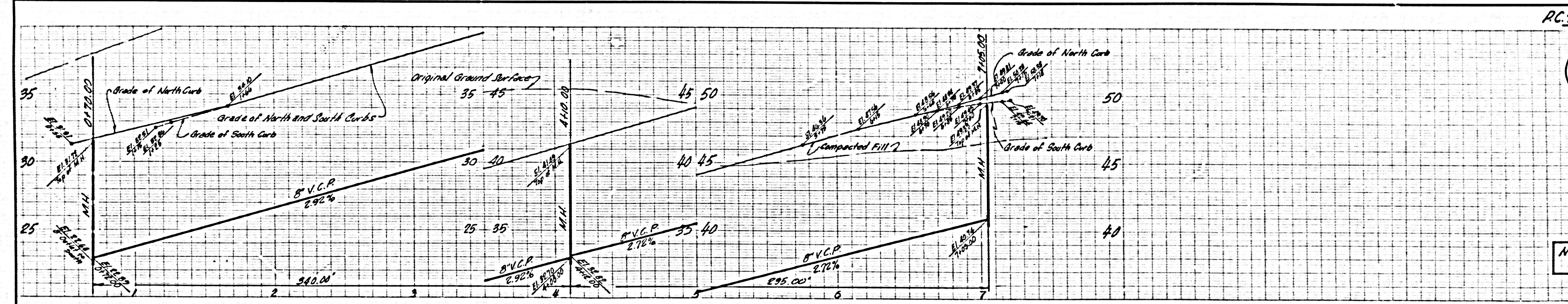
37016



L.A. COUNTY BEWER SHEET NO. 2 WESTMINSTER BLUEPRINT CO.

37017

NO CHARGE FOR CONNECTION



L.A. COUNTY BEWER SHEET NO. 2 SO. CAL. BLUEPRINT CO.

