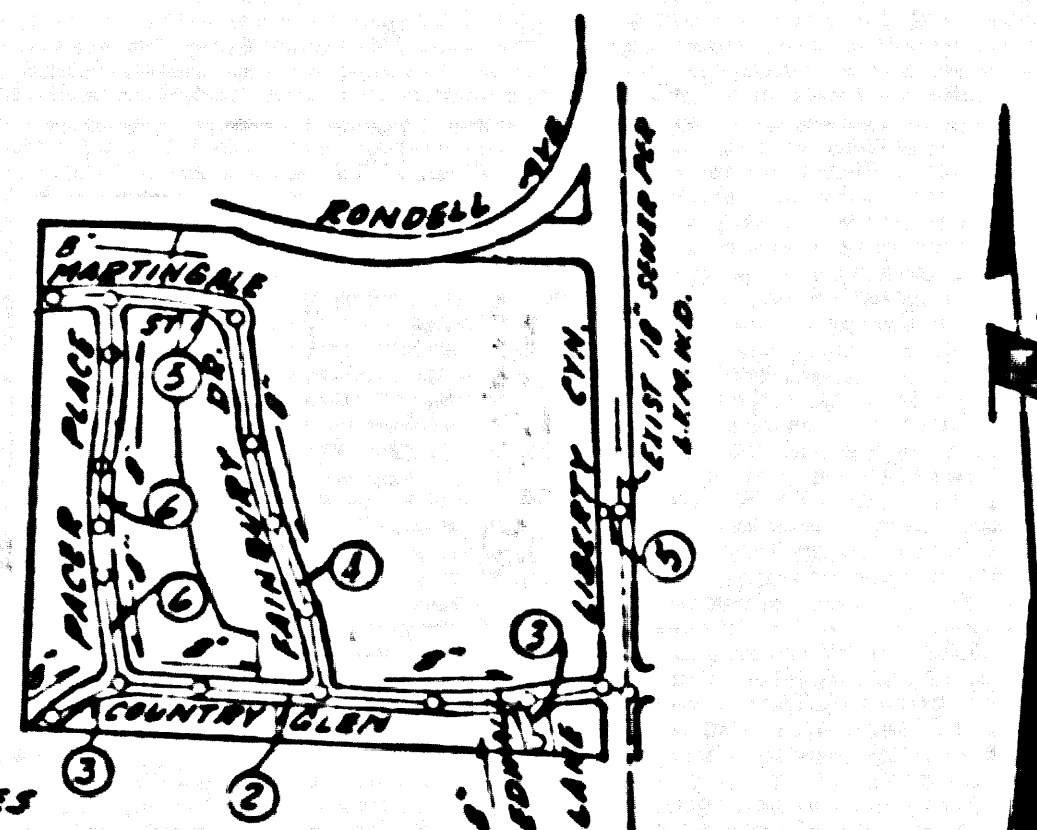


B.M. SY-5613 ELEV. 843.027  
 CHIS. 30 @ S.E. COR. C.B. (DIP. 114.87) AND  
 CENTER BLDG. @ STA. 283+99.47  
 M. 615 H.P. 114.87  
 MALIBU QUAD. 1960

REVISION NO 1 - APRIL 10, 1970  
 UPDATED GENERAL NOTES  
 ON PAGE ONE AND REVISED  
 STANDARD DRAWING NOTES WHERE  
 NECESSARY ON ALL PAGES  
 APPROVED *[Signature]* 17722  
 MALIBU REGIONAL OFFICE - R.E. 135

REVISION NO 2 - MAY 19, 1971  
 CHANGE GRADE, PAGE 2  
 STA. 1+24.88 TO STA. 2+98.71  
 APPROVED *[Signature]* 17722  
 MALIBU REGIONAL OFFICE - R.E. 135



NOTE: NUMBERS IN CIRCLES  
 INDICATE PAGE NUMBERS.  
 INDEX MAP  
 TRACT NO. 28920 / 29970  
 P.C. 7218  
 SCALE 1"=600'

DOUBLE SCALE  
 CALABASAS BLDG. DIST. NO. 91

PROFILE ALIGNMENT AND GRADE OF P.C. 7218  
 SANITARY SEWERS PAGE 1  
 TO BE CONSTRUCTED IN  
 TRACT N<sup>o</sup> 28920 &  
 29970

PRIVATE CONTRACT NO. 7218  
 90 W.S.  
 3 SHEETS, 6 PAGES  
 SCALE: HORIZ. 1"=40' VERT. 1"=4'  
 PREPARED IN THE OFFICES OF  
 MCINTIRE & QUIROS INC.  
 BY *[Signature]*  
 REG. C. E. NO. 11758

- HOUSE LATERALS TO BE CONSTRUCTED WITH INVERTS AT PROPERTY LINE 6 FEET BELOW CURB GRADE EXCEPT AS NOTED.
- PROVIDE GRADE ON THE PROPERTY LINE OR PROPERTY LINES PRODUCED AT RIGHT ANGLES TO THE SEWER LINE AT THE CENTER LINE OF EACH MANHOLE.
- NO REPRESENTATIVE OF THE COUNTY ENGINEER WILL SURVEY OR LAY OUT ANY PORTION OF THE WORK.
- THE PRIVATE ENGINEER SHALL FURNISH THE COUNTY ENGINEER WITH GRADE SHEET, AND STATIONING FOR ALL HOUSE LATERALS AND T OR Y BRANCHES AND SHALL PROVIDE STAKES FOR THEM AT THEIR PROPER LOCATIONS WITH STATIONING PLAINLY MARKED. ALL HOUSE LATERALS SHALL BE CONSTRUCTED IN A STRAIGHT ALIGNMENT AT RIGHT ANGLES FROM THE MAIN LINE SEWER EXCEPT AS SHOWN ON THE PLANS. HOUSE LATERALS FROM CHIMNEYS SHALL NOT HAVE AN ANGLE OF LESS THAN 45° WITH THE MAIN LINE SEWER. ANY CHANGE IN ALIGNMENT SHALL BE REQUESTED IN WRITING BY THE PRIVATE ENGINEER.
- THE PRIVATE ENGINEER SHALL FURNISH THE HOUSE LATERAL DEPTH AT THE PROPERTY LINE BELOW THE TOP OF CURB REVISION FOR EACH HOUSE LATERAL ON THE GRADE SHEET.
- NO REVISIONS SHALL BE MADE IN THESE PLANS WITHOUT THE APPROVAL OF THE COUNTY ENGINEER.
- THE CONTRACTOR SHALL NOTIFY THE COUNTY ENGINEER BY TELEPHONE, MADISON 9-4747, EXT. 8158, AT LEAST TWENTY-FOUR HOURS BEFORE STARTING ANY WORK UNDER THIS CONTRACT.
- ALL STRUCTURES SHALL BE EITHER BRICK MANHOLES PER S-3 OR PRECAST CONCRETE MANHOLES PER S-36 EXCEPT AS NOTED.
- T OR Y BRANCHES MAY BE USED FOR CONNECTION TO MAIN LINE SEWERS EXCEPT AS NOTED.
- MANHOLE TOPS IN UNIMPROVED RIGHTS-OF-WAY TO BE 22 INCHES ABOVE FINISHED GRADE.
- USE EXTRA STRENGTH PIPE ALL PIPE IS STANDARD DEPTH EXCEPT AS NOTED.
- VITRIFIED CLAY PIPE JOINTS SHALL BE TYPE "D" OR "E" PER STANDARD SPECIFICATION SECTION 208-2.
- IF A POWER POLE IS WITHIN THREE FEET OF THE SEWER, THE SEWER SHALL BE ENCASED PER S-23 12" TWO FEET ON EITHER SIDE FROM THE POINT OF INTERFERENCE.
- IF DURING THE COURSE OF CONSTRUCTION IT IS DETERMINED THAT THERE IS LESS THAN FOUR FEET OF COVER OVER THE TOP OF A MAIN LINE OR HOUSE LATERAL V.C.P. PIPE WHICH IS NOT INDICATED ON THE PLANS, THE PIPE SHALL BE ENCASED PER S-23 UNLESS OTHERWISE APPROVED BY THE COUNTY ENGINEER.
- UNPAVED ALL THROUGH TRAVEL AREAS TO MEET L.A. COUNTY ROAD DEPT. OR CALIFORNIA STATE HIGHWAY REQUIREMENTS BY ACCORDANCE WITH PERMITS.
- SEWERS TO BE AIR PRESSURE TESTED FOR LEAKAGE PER SECTION 308-237C OF THE STANDARD SPECIFICATIONS.
- REFER TO SECTION 7-10.4.1 OF THE STANDARD SPECIFICATIONS, REGARDING SAFETY ORDERS.
- ALL JOINTS BETWEEN CAST IRON PIPE SHALL BE MADE WITH A RUBBER GLEVE JOINT, TYPE "C" OR "D", (WITH BUSHING IF NECESSARY) PER STANDARD SPECIFICATIONS, SECTION 208-2.

THE FOLLOWING LATEST REVISED STANDARD PLANS ON FILE IN THE OFFICE OF THE COUNTY ENGINEER SHALL APPLY IN THE CONSTRUCTION OF THIS PROJECT:

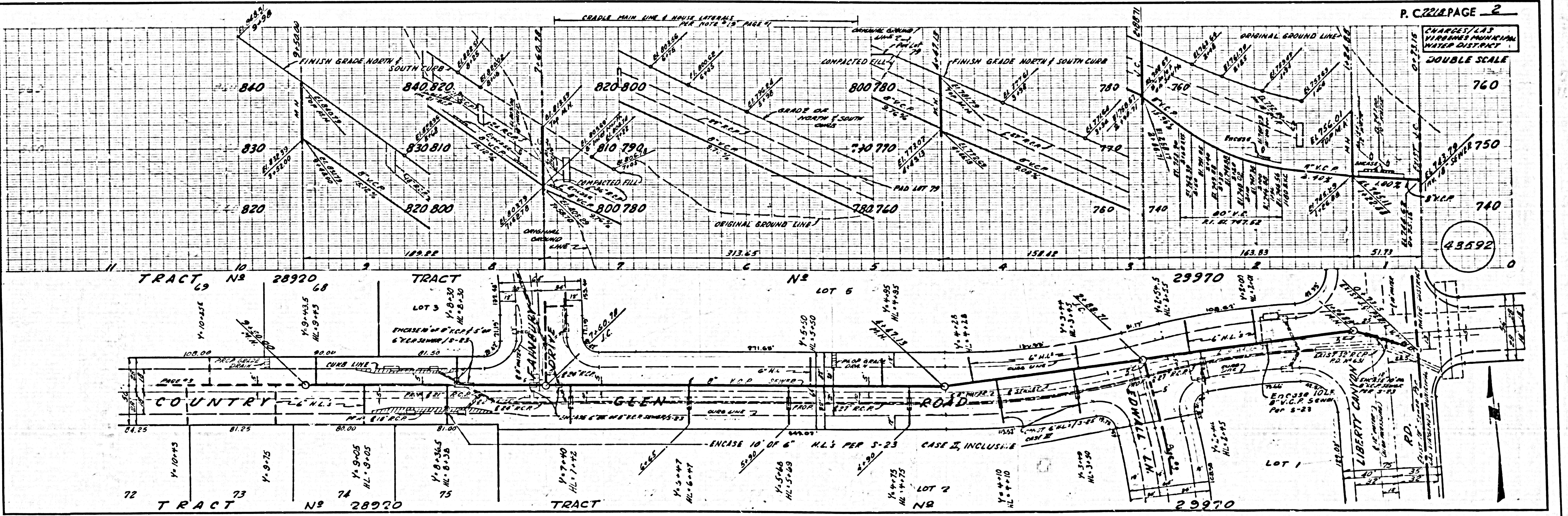
LEGEND	S-1
MINIMUM PUBLIC SAFETY REQUIREMENTS	S-2
BRICK MANHOLE	S-3
A.M. REINFORCED PRECAST CONCRETE MANHOLE	S-36
MANHOLE FRAME AND COVER	S-36
STANDARD MANHOLE STEP	S-36
SEEDING FOR SEWER PIPE	S-36
CRACKING AND ENCASEMENT	S-36
WELDED STEEL SUPPORT	S-36
ALLOWABLE TRENCH WIDTHS	S-33

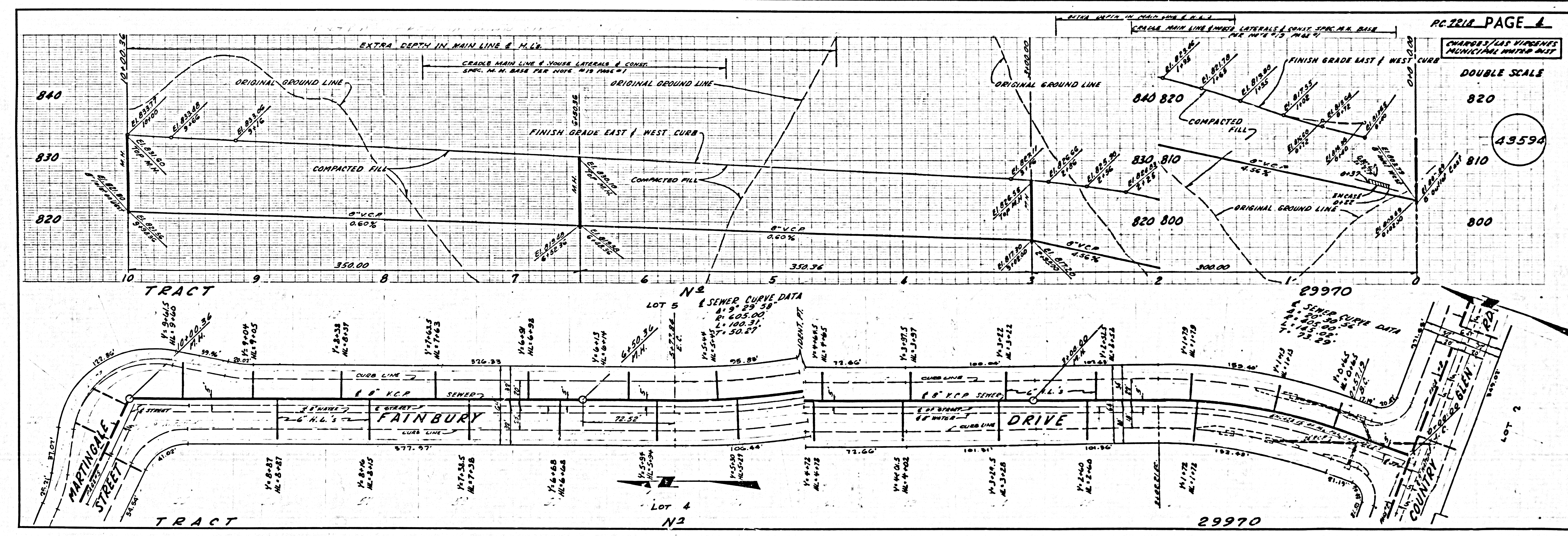
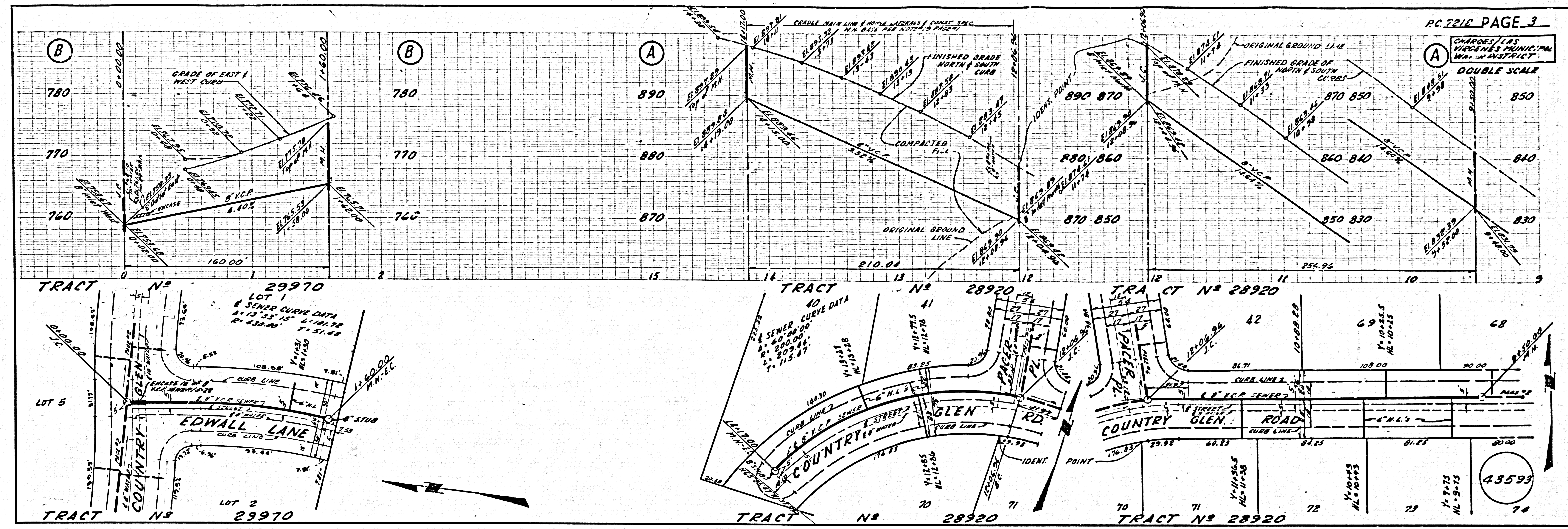
COLLECT CHARGES  
 AS INDICATED  
*[Signature]* 4/16/65

NOTE:  
 GRADES TO WHICH THIS IMPROVEMENT IS TO BE CONSTRUCTED ARE SHOWN ON PLANS AND PROFILES. GRADE POINTS FOR TOP OF CURB, CENTER LINE OF STREETS, OR CENTER LINE OF ALLEYS ARE SHOWN BY CIRCLES ON PROFILES AT ALL POINTS BETWEEN DESIGNATED POINTS. THE GRADE SHALL BE ESTABLISHED TO A STRAIGHT LINE BETWEEN SAID DESIGNATED POINTS.  
 ELEVATIONS ARE IN FEET ABOVE U.S.C. & G.S. MEAN LEVEL DATUM OF 1929.  
 THE SEWERING AND DATA HEREON ARE HEREBY MADE A PART OF THE SPECIFICATIONS.  
 WORK SHALL BE CONSTRUCTED ACCORDING TO STANDARD SPECIFICATIONS FOR PUBLIC WORKS CONSTRUCTION, 1960 EDITION, EDITION NO. 1, AND SHALL BE PROSECUTED ONLY IN THE PRESENCE OF THE COUNTY ENGINEER. PROVISIONS FOR EACH TRADE WORK WHOM CAN BE STARTED, THE CONTRACTOR MUST OBTAIN A PERMIT TO EXCAVATE IN COUNTY ENGINEER, ROOM 200, COUNTY ENGINEER'S BUILDING, 100 WEST SECOND STREET, LOS ANGELES, CALIFORNIA 90012.  
 APPROVAL OF THIS PLAN BY THE COUNTY OF LOS ANGELES DOES NOT CONSTITUTE A REPRESENTATION AS TO THE ACCURACY OF THE LOCATION OF OR THE EXISTENCE OR NON-EXISTENCE OF ANY UNDERGROUND UTILITY PIPE, OR STRUCTURE WITHIN THE LIMITS OF THIS PROJECT. THIS NOTE APPLIES TO ALL PAGES.  
 IF WORK IS TO BE DONE IN A STATE HIGHWAY, A PERMIT MUST BE OBTAINED FROM THE STATE OF CALIFORNIA, DIVISION OF HIGHWAYS, 120 SOUTH SPRING STREET, LOS ANGELES, CALIFORNIA.

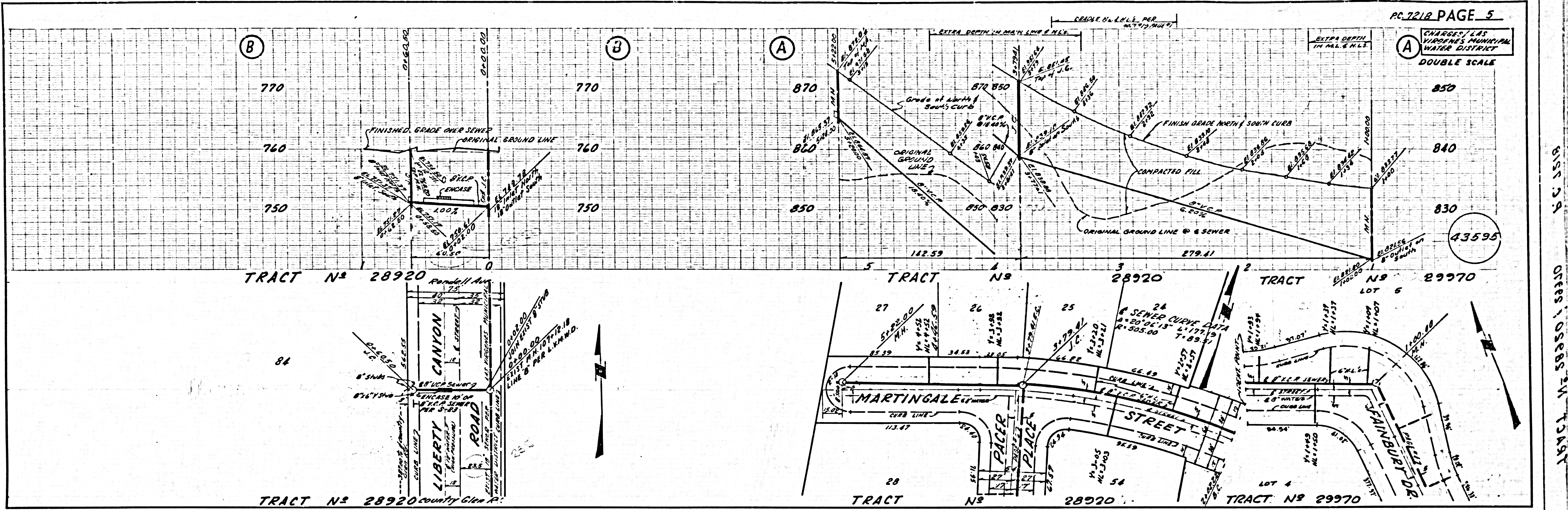
COUNTY OF LOS ANGELES, CALIFORNIA  
 JOHN A. LAMBE, COUNTY ENGINEER  
 LAS VIRGENES MUNICIPAL WATER DISTRICT  
 APPROVED BY *[Signature]*  
 ASSISTANT SANITATION ENGINEER  
 APPROVED BY *[Signature]*  
 P.C.E. 75375 CIVIL ENGINEER U.C. 65  
 CHECKED BY *[Signature]*  
 REG. C.E. NO. 10,673

J.N. 0364.71

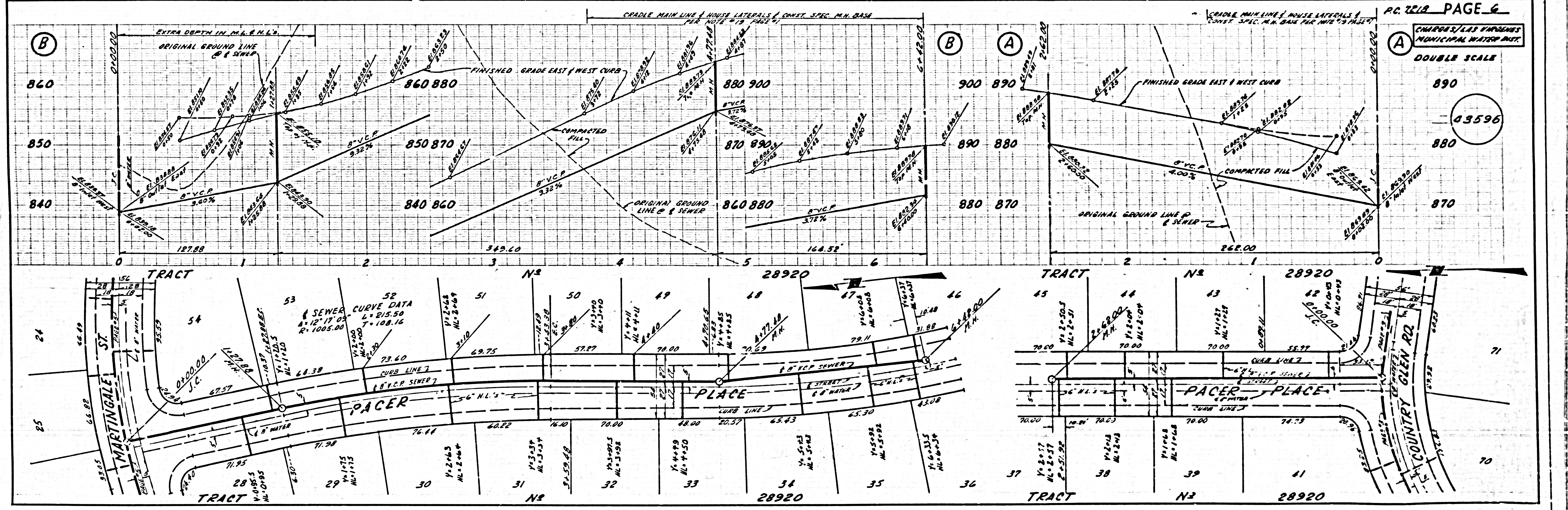




CHARGES LAD VILLAGES MUNICIPAL WATER DISTRICT  
DOUBLE SCALE



CHARGES LAD VILLAGES MUNICIPAL WATER DIST. DOUBLE SCALE



850 840 830  
43595  
84  
LIBERTY CANYON ROAD  
MARTINGALE STREET  
PACER PLACE  
FAIRBAIRN DR.  
28920 29970

890 880 870  
43596  
24 25 26 27 28 29 30 31 32 33 34 35 36 37 38 39 40 41 42 43 44 45 46 47 48 49 50 51 52 53 54  
MARTINGALE ST  
PACER PLACE  
COUNTRY GLEN RD