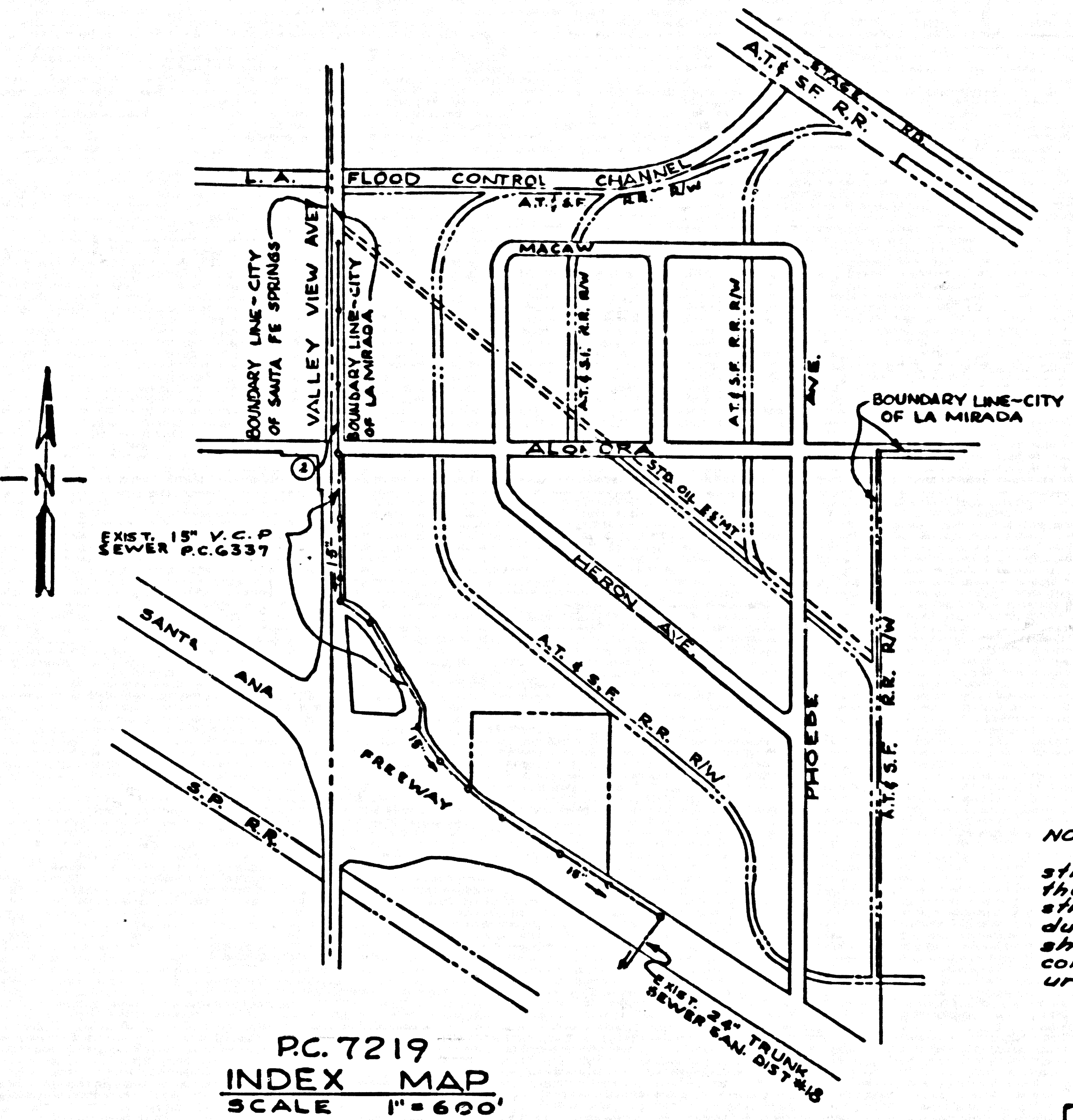


BENCH MARK: 1-1 (U.S. 42) (T33+62 U.S.G.S.)
 Valley View Ave and S.R.R. (Santa Ana Branch)
 approx 48' S of the C.L. of Firstone Blvd., 20' S.E.
 along the N.E. rail from the C.L. of Valley View Ave.
 and 53' N.E. of the N.E. rail at a R.R. Culvert in the N.W.
 end of the N.E. headwall at a U.S.G.S. disk stamped
 "42-1914-63-T-33" 1952 Adj. - **ELEV. 60.431**
 NOTE: SUBTRACT 0.325' FROM ALL ELEVATIONS TO AGREE WITH 1962 Adj. ELEV. 60.106



PC. 7219
 INDEX MAP
 SCALE 1" = 600'

LA MIRADA BLDG. DIST. NO. 4.08

- NOTES:**
1. PROVIDE STAKES ON THE PROPERTY LINE OR PROPERTY LINES PRODUCED AT RIGHT ANGLES TO THE CENTER LINE OF THE CENTER LINE OF EACH MANHOLE.
 2. NO REPRESENTATIVE OF THE CITY ENGINEER WILL SURVEY OR LAYOUT ANY PORTION OF THE WORK.
 3. THE OWNER OR HIS AUTHORIZED REPRESENTATIVE SHALL FURNISH THE CITY ENGINEER WITH GRADE SHEETS AND STATIONING FOR ALL HOUSE LATERALS AND Y BRANCHES AND SHALL PROVIDE STAKES FOR THEM AT THEIR PROPER LOCATIONS WITH STATIONING PLAINLY MARKED. ANY CHANGE IN ALIGNMENT SHALL BE REQUESTED IN WRITING BY THE OWNER OR HIS REPRESENTATIVE.
 4. THE PERMITS ENGINEER SHALL FURNISH THE HOUSE LATERAL DEPTH AT THE PROP. STY LINE ALONG THE TOP OF CURB ELEVATION FOR EACH HOUSE LATERAL ON THE GRADE SHEET.
 5. NO REVISIONS SHALL BE MADE IN THESE PLANS WITHOUT THE APPROVAL OF THE CITY ENGINEER.
 6. USE STANDARD MANHOLE FRAMES AND COVERS 3-15.
 7. USE EXTRA STRENGTH PIPE, ALL PIPE IS STANDARD DEPTH.
 8. USE MECHANICAL COMPRESSION JOINTS FOR ALL V.C.P. JOINTS PER SPEC. SEC. 36, 40 & 41.
 9. RESURFACE ALL TRENCH WITHIN PAVED AREA TO MEET L.A. COUNTY ROAD DEPT. OR CALIF. STATE HIGHWAY REQUIREMENTS IN ACCORDANCE WITH PERMITS.
 10. ALL POWER POLES IS WITHIN THREE FEET OF THE SEWER. THE SEWER SHALL BE ENCASED PER S-23, TWO FEET ON EACH SIDE FROM THE POINT OF INTERFERENCE.
 11. ALL STRUCTURES SHALL BE CONCRETE STRUCTURES EXCEPT CONCRETE MANHOLES.
 12. FOR ALLOWABLE CLEARANCE SEE FORMULA NO. 12, SPEC. 34.
 13. MANHOLE TOPS IN UNIMPROVED AREAS OF HWY TO BE SIX INCHES ABOVE FINISHED GRADE.
 14. THE CONTRACTOR SHALL NOTIFY THE CONSTRUCTION DIVISION BY TELEPHONE, MAIL OR BY LETTER AT LEAST TWENTY-FOUR HOURS BEFORE STAKING AND MARK UNDER THIS CONTRACT.
 15. STANDARD SPECIFICATIONS DATED MAY 28, 1962 SHALL APPLY IN THE CONSTRUCTION OF THIS PROJECT.
 16. ALL STATE AND LOCAL TRENCH SAFETY ORDERS WILL BE RIGIDLY ENFORCED.
 17. DURING THE COURSE OF CONSTRUCTION IT IS DETERMINED THAT THERE IS LESS THAN FOUR FEET OF COVER OVER THE TOP OF A MAIN LINE OR HOUSE LATERAL V.C.P. SEWER WHICH IS NOT INDICATED ON THE PLANS, THE PIPE SHALL BE ENCASED PER S-23 UNLESS OTHERWISE APPROVED BY THE CITY ENGINEER.

NOTICE TO CONTRACTORS:
 The existence and approximate location of underground utilities or structures were determined by a search of the available public records. To the best of our knowledge there were no existing underground utilities or structures shown on this map. The contractor is responsible to take due precautionary measures to protect the utilities and structures shown and any other utilities or structures at the site. It shall be the contractor's responsibility to notify the owners of utilities or structures concerned before starting work.

NO CONNECTIONS FOR THE DISPOSAL OF INDUSTRIAL WASTE SHALL BE MADE TO SEWERS SHOWN ON THESE DRAWINGS WITHOUT WRITTEN PERMISSION FROM THE CHIEF ENGINEER AND GENERAL MANAGER OF THE COUNTY SANITATION DISTRICTS.

APPROVED: *John A. Lambie*
 INDUSTRIAL WASTE DIVISION

COLLECT CHARGES AS INDICATED
John A. Lambie

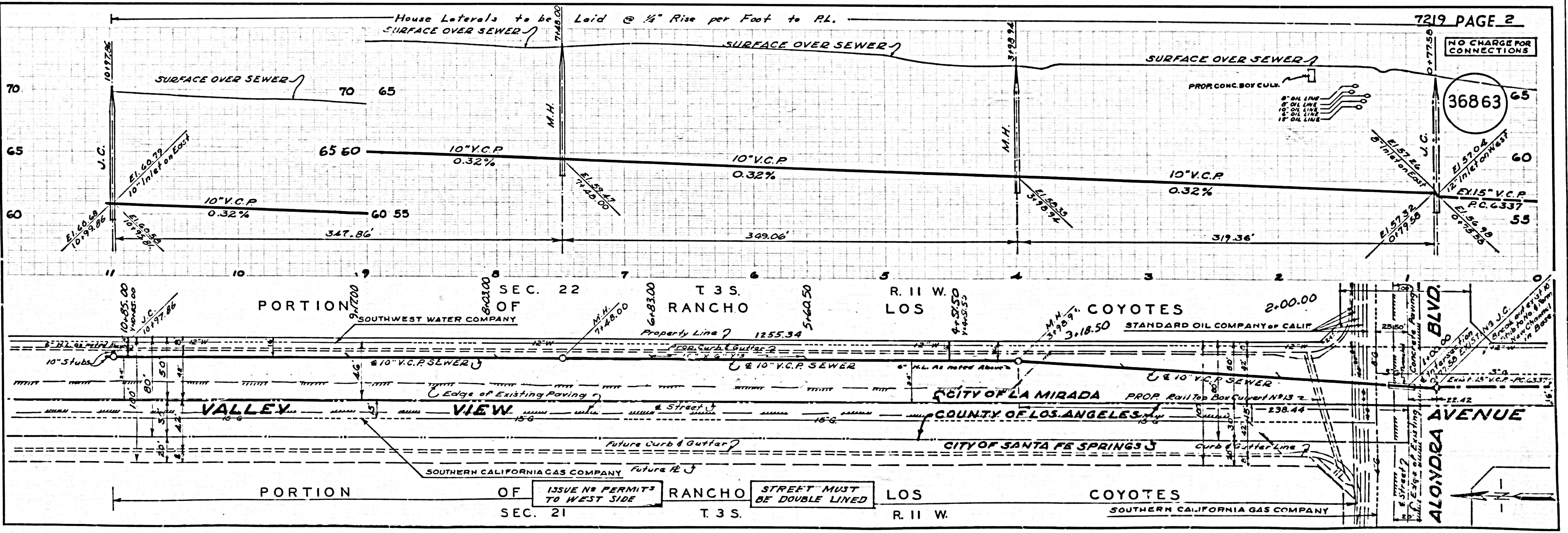
VALLEY VIEW AVENUE
 PRIVATE CONTRACT NO. 7219

W.S. 34
 1 SHEET 2 PAGES
 SCALE VERT. 1" = 4' HORIZ. 1" = 40'
 MOBILE, CALIF. DECEMBER 1964
 PREPARED IN THE OFFICES OF
 CENTRAL MANUFACTURING DISTRICT INC.
 BY *John A. Lambie*
 REG. C.E. NO. 7709
 FOR LEGEND SEE PLAN NO. S-1

36862

NOTE:
 GRADES TO WHICH THIS IMPROVEMENT IS TO BE CONSTRUCTED ARE SHOWN ON PLANS AND PROFILES. GRADE POINTS FOR TOP OF CURBS, CENTER LINE OF STREETS OR CENTER LINE OF ALLEYS ARE SHOWN BY CIRCLES ON PROFILES. AT ALL POINTS BETWEEN DESIGNATED POINTS THE GRADE SHALL BE ESTABLISHED SO AS TO CONFORM TO A STRAIGHT LINE BETWEEN SAID DESIGNATED POINTS.
 ELEVATIONS ARE IN FEET ABOVE U.S.C. & G.S. SEA LEVEL DATUM OF 1929.
 THIS DRAWING AND THE DATA HEREON ARE HEREBY MADE A PART OF THE SPECIFICATIONS.
 BEFORE WORK CAN BE STARTED, THE CONTRACTOR MUST OBTAIN A PERMIT TO EXCAVATE IN CITY STREETS FROM THE L.A. COUNTY ROAD DEPT. DISTRICT OFFICE NO. 4, AND MAKE A DEPOSIT WITH THE CITY OF LA MIRADA, 1800 S. VALLEY BLVD., SUFFICIENT TO COVER THE COST OF CONSTRUCTION INSPECTION AND RECORD PLANS.
 APPROVAL OF THIS PLAN BY THE CITY OF LA MIRADA DOES NOT CONSTITUTE A REPRESENTATION AS TO THE ACCURACY OF THE LOCATION OF THE EXISTENCE OR NON-EXISTENCE OF ANY UNDERGROUND UTILITY PIPE OR STRUCTURE WITHIN THE LIMITS OF THIS PROJECT. THIS NOTE APPLIES TO ALL PAGES.
 IF WORK IS TO BE DONE IN A STATE HIGHWAY, A PERMIT MUST BE OBTAINED FROM THE STATE OF CALIFORNIA, DIVISION OF HIGHWAYS, 150 SOUTH SPRING STREET.

CITY OF LA MIRADA, CALIFORNIA
 APPROVED, JOHN A. LAMBIE, CITY ENGINEER APPROVED, J.D. PARKHURST, CHIEF ENGINEER
 CO. SAN. DIST. NO. 18
 BY *John S. Kline* BY *John S. Kline*
 ASSISTANT SANITATION ENGINEER ASSISTANT SANITATION ENGINEER
 CHECKED BY *John S. Kline* OFFICE ENGINEER
 OFFICE OF CITY ENGINEER, REG. C.E. NO. 9404
 SUBMITTED BY: *John S. Kline*
 LOS CERRITOS REGIONAL ENGINEER, REG. C.E. NO. 3271



36863