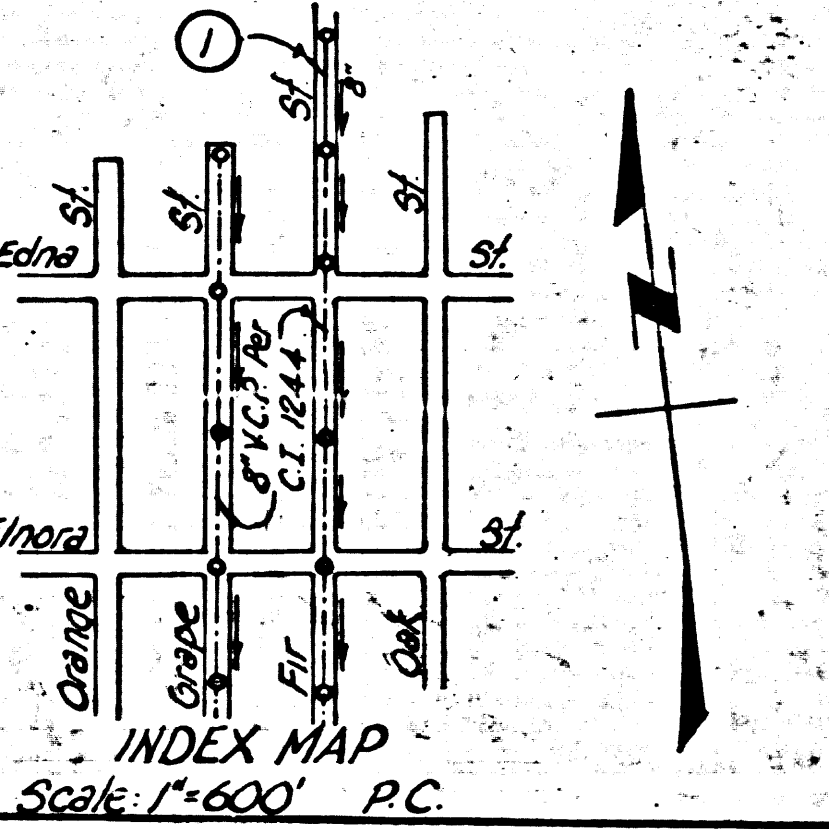


PICO RIVERA BLDG. DIST. NO. 1101

- NOTE
1. PROVIDE STAKES ON THE PROPERTY LINE OR PROPERTY LINES PRODUCED AT RIGHT ANGLES TO THE SEWER LINE AT THE CENTER LINE OF EACH MANHOLE.
  2. THE CITY SHALL FURNISH GRADE SHEETS AND STATIONING FOR ALL HOUSE LATERALS AND Y BRANCHES AND SHALL PROVIDE STAKES FOR THEM AT THEIR PROPER LOCATIONS WITH STATIONING PLAINLY MARKED. ALL HOUSE LATERALS SHALL BE CONSTRUCTED IN A STRAIGHT ALIGNMENT AT RIGHT ANGLES FROM THE MAIN LINE SEWER EXCEPT AS SHOWN ON THE PLANS. HOUSE LATERALS FROM CHIMNEYS SHALL NOT HAVE AN ANGLE OF LESS THAN 45° WITH THE MAIN LINE SEWER. ANY CHANGE IN ALIGNMENT SHALL BE REQUESTED IN WRITING BY THE CITY.
  3. THE CITY SHALL FURNISH THE HOUSE LATERAL DEPTH AT THE PROPERTY LINE BELOW THE TOP OF CURB ELEVATION FOR EACH HOUSE LATERAL ON THE GRADE SHEET.
  4. NO DIVISIONS SHALL BE MADE IN THESE PLANS WITHOUT THE APPROVAL OF THE Director of Public Works.
  5. THE CONTRACTOR SHALL NOTIFY THE CITY BY TELEPHONE, OR 20401, AT LEAST TWENTY-FOUR HOURS BEFORE STARTING ANY WORK UNDER THIS CONTRACT.
  6. MANHOLES SHALL BE BRICK SEWER STRUCTURES PER S-104 PRECAST CONCRETE MANHOLES PER S-125 OR S-173 MAY BE USED AS AN ALTERNATE IN LOCATIONS APPROVED BY THE Director of Public Works.
  7. USE STANDARD MANHOLE FRAMES AND COVERS, S-37, EXCEPT AS NOTED.
  8. MANHOLE TOPS IN UNIMPROVED RIGHTS-OF-WAY TO BE SIX INCHES ABOVE FINISHED GRADE.
  9. USE EXTRA STRENGTH PIPE, ALL PIPE BE STANDARD DEPTH EXCEPT AS NOTED.
  10. USE MECHANICAL COMPRESSION JOINTS FOR ALL V.C.P. JOINTS PER SPCCS, SECS. 34 & 48.
  11. USE
  - 12.
  13. IF A POWER POLE IS WITHIN THREE FEET OF THE SEWER THE SEWER SHALL BE ENCASED, PER S-172, CASE B, TWO FEET ON EITHER SIDE FROM THE POINT OF INTERFERENCE.
  14. IF DURING THE COURSE OF CONSTRUCTION IT IS DETERMINED THAT THERE IS LESS THAN FOUR FEET OF COVER OVER THE TOP OF A MAIN LINE OR HOUSE LATERAL V.C.P. SEWER WHICH IS NOT INDICATED ON THE PLANS, THE PIPE SHALL BE ENCASED PER S-172, CASE B, UNLESS OTHERWISE APPROVED BY THE Director of Public Works.
  15. HOUSE LATERALS TO BE CONSTRUCTED WITH INVERTS AT PROPERTY LINE, *as noted in profile*.
  16. RESURFACE ALL TRENCHS WITHIN PAVED AREAS TO MEET L.A. COUNTY ROAD DEPT. OR CALIFORNIA STATE HIGHWAY REQUIREMENTS IN ACCORDANCE WITH PERMITS. *Not a Part of This Contract*.
  17. FOR ALLOWABLE USAGE TEST USE FORMULA NO. 2, SECS. 34 & 48.

No connections for the disposal of industrial wastes shall be made to sewers shown on these drawings without written permission from the Chief Engineer and General Manager of the County Sanitation Districts

COLLECT CHARGES AS INDICATED



PROFILE ALIGNMENT AND GRADE OF P.C. 7221  
 SANITARY SEWERS PAGE 1  
 TO BE CONSTRUCTED IN  
 FIR STREET  
 CASH CONTRACT No 51  
 PRIVATE CONTRACT NO. 7221

41936

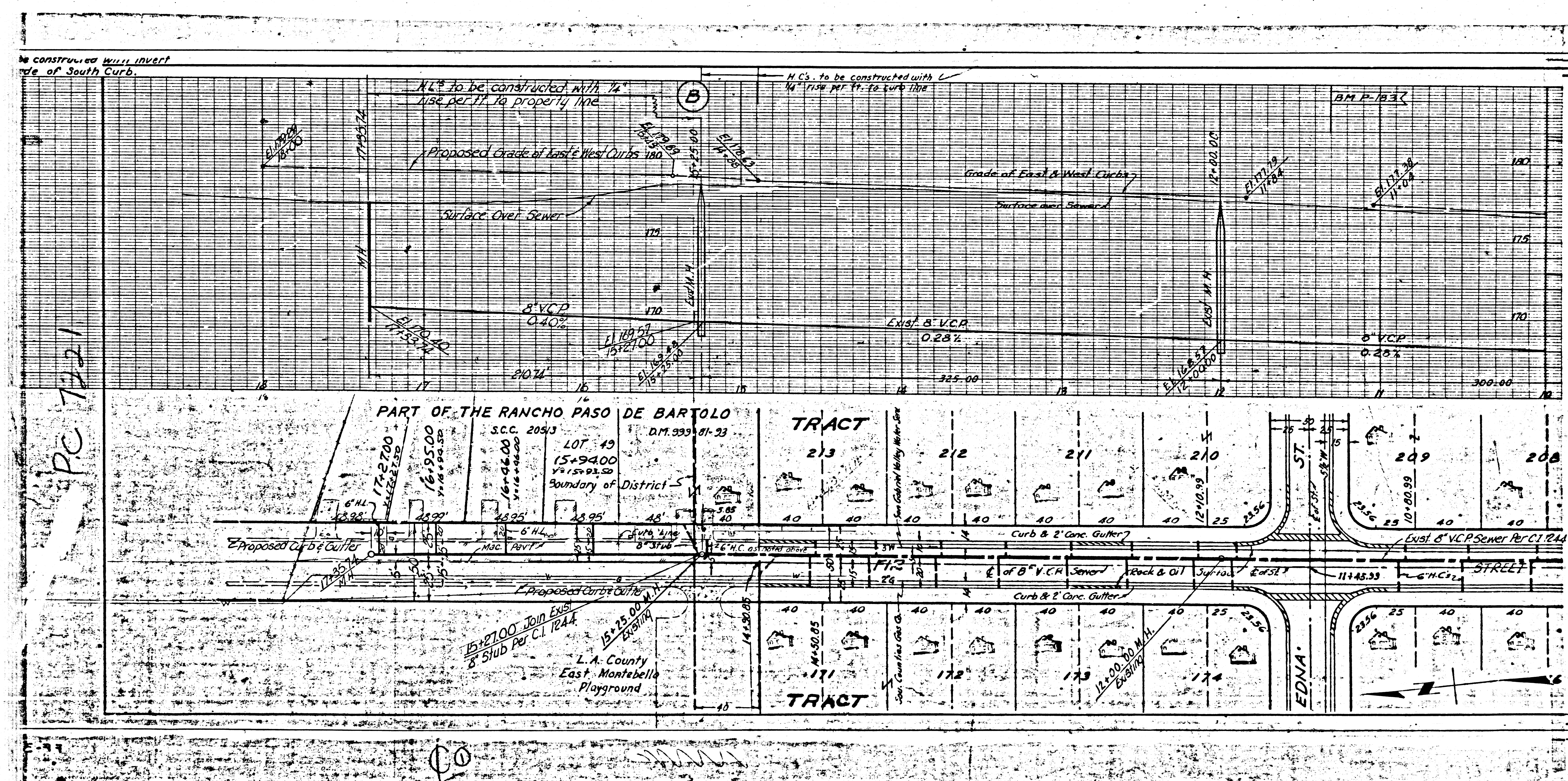
W.S. 36  
 1 SHEET OF 1 PAGE  
 SCALE: HORIZ. 1"=40' VERT. 1"=4'  
 NOV, 1964  
 PREPARED IN THE OFFICES OF  
 WEACCO, INC.  
 John H. Quinn  
 REG. C. E. NO. 9915  
 FOR LEGEND SEE PLAN NO. S-64

NOTE: GRADES TO WHICH THIS IMPROVEMENT IS TO BE CONSTRUCTED ARE SHOWN ON PLANS AND PROFILES. GRADE POINTS FOR TOP OF CURB, CENTER LINE OF STREETS, OR CENTER LINE OF ALLEYS ARE SHOWN BY CIRCLES ON PROFILES. AT ALL POINTS BETWEEN DESIGNATED POINTS THE GRADE SHALL BE ESTABLISHED SO AS TO CONFORM TO A STRAIGHT LINE BETWEEN SAID DESIGNATED POINTS. ELEVATIONS ARE IN FEET ABOVE U.S.C. & G.S. SEA LEVEL DATUM OF 1929. THIS DRAWING AND THE DATA HEREON ARE HEREBY MADE A PART OF THE SPECIFICATIONS. WORK SHALL BE CONSTRUCTED ACCORDING TO STANDARD SPECIFICATIONS DATED May 25, 1962 ON FILE IN THE OFFICE OF THE CITY ENGINEER. APPROVAL OF THIS PLAN BY THE CITY ENGINEER DOES NOT CONSTITUTE A REPRESENTATION AS TO THE ACCURACY OF THE LOCATION OR THE EXISTENCE OR NON-EXISTENCE OF ANY UNDERGROUND UTILITY PIPE, OR STRUCTURE WITHIN THE LIMITS OF THIS PROJECT. THIS NOTE APPLIES TO ALL PAGES. IF WORK IS TO BE DONE IN A STATE HIGHWAY, A PERMIT MUST BE OBTAINED FROM THE STATE OF CALIFORNIA, DIVISION OF HIGHWAYS, 120 SOUTH SPRING STREET, LOS ANGELES, CALIFORNIA.

CITY OF PICO RIVERA, CALIFORNIA  
 J. D. PARKHURST, CHIEF ENGINEER  
 CO. 344, 2011  
 APPROVED BY: [Signature] OFFICE ENGINEER  
 APPROVED BY: [Signature] ASSISTANT SANITATION ENGINEER  
 SUBMITTED BY: REGIONAL ENGINEER  
 CHECKED BY: [Signature] ASSIST. DIRECTOR OF PUBLIC WORKS  
 REG. C. E. NO. [Blank]  
 J. N.

DRAWING NO. 2-26  
 FILE FFB





PICO

- NOTES
1. PROVIDE STAKES OF EACH MANHOLE
  2. THE CITY BRANCHES AND LATERALS SHALL BE THE PLANS, NO CHANGE IN ALIGNMENT
  3. THE CITY EACH HOUSE SHALL
  4. NO REVISIONS
  5. THE CONTRACTOR SHALL BE RESPONSIBLE FOR THE LOCATION OF MANHOLES SHALL BE AS AN ALTERNATE
  6. USE STANDARD
  7. MANHOLE TOPS
  8. USE EXTRA STRENGTH
  9. USE
  10. USE
  11. USE
  12. USE
  13. IF A POWER POLE IS ON THE SIDE OF THE STREET, THE CONTRACTOR SHALL BE RESPONSIBLE FOR THE PROTECTION OF THE SAME
  14. IF DURING THE CONSTRUCTION OF THE SEWER LINE OR HOUSE LATERALS, THE CONTRACTOR SHALL BE RESPONSIBLE FOR THE PROTECTION OF THE SAME
  15. HOUSE LATERALS SHALL BE CONSTRUCTED IN ACCORDANCE WITH THE CITY ENGINEER'S PLAN
  16. RESURFACE ALL AREAS IN ACCORDANCE WITH THE CITY ENGINEER'S PLAN
  17. FOR ALLOWANCE

No connections to industrial sewers shall be made without the approval of the Chief Engineer of the County.

COLL AS IN