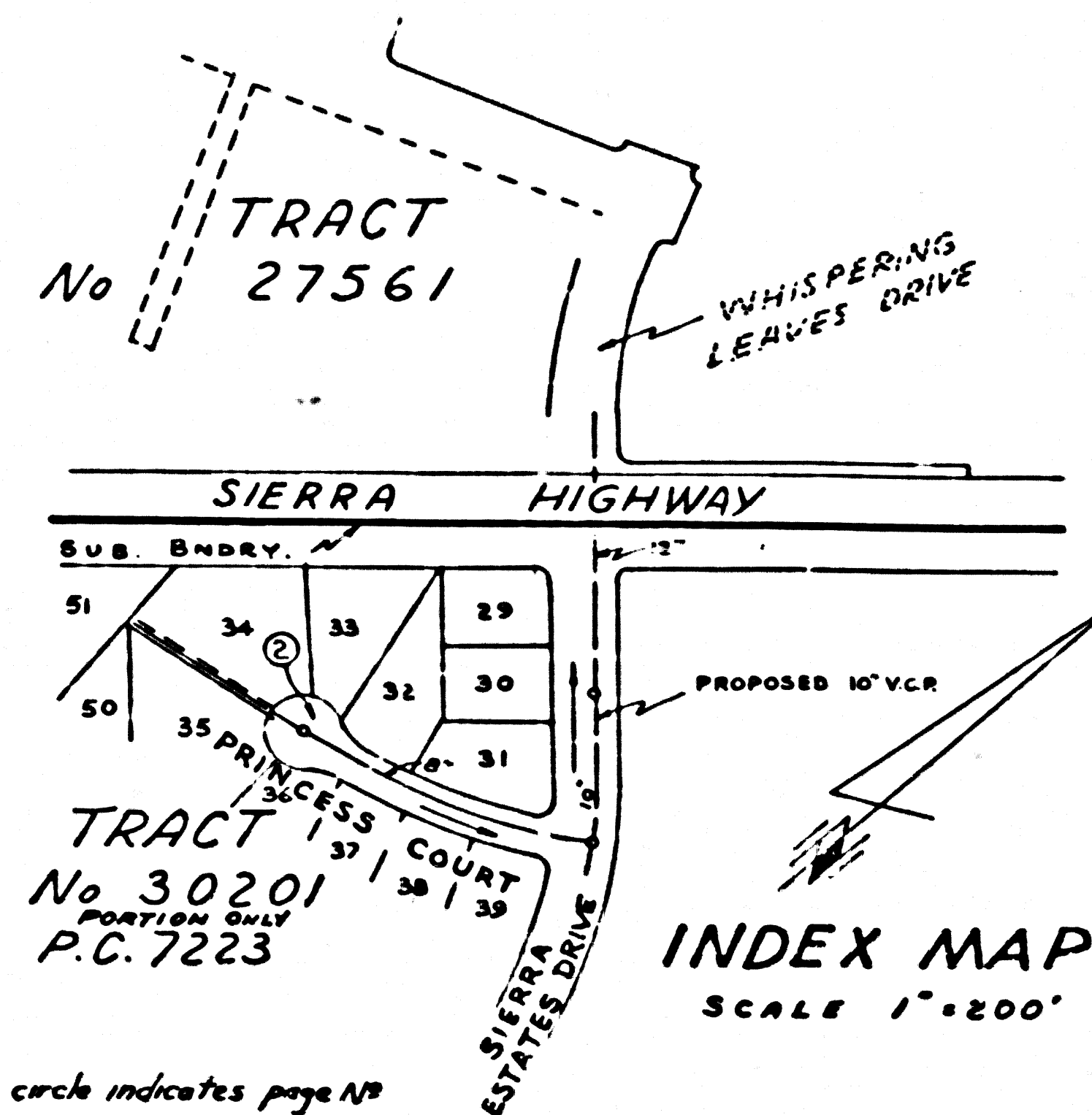


B.M. 51.942 ELEV. 1423.098
 U.S. & S. MON. STAMPED 1486-1855 IN N.Y.
 END OF N.Y. ABOUT 5 P.M. BOX CULVERT
 UNDER SIERRA HWY BRIDGE #
 0.6 MI. S.W. OF SOLEDAD ON RD. 6 N.Y.
 OF N.Y. RAIL 4.5 S.W. OF SIERRA HWY
 NEWHALL QUAD. 1958



NOTE
 Number in circle indicates page No.

ALLOW NO CONNECTIONS TO THIS SEWER
 THE FOLLOWING MUST BE DONE BEFORE CONNECTIONS
 MAY BE MADE: 1. OUTLET SEWER TO BE CONSTRUCTED
 2. PROPERTY ANNEXED TO SA-DISTRICT

DOUBLE SCALE
 NEWHALL BLDG. DIST. NO. 8.2

PROFILE ALIGNMENT AND GRADE OF P.C. 7223
 SANITARY SEWERS PAGE 1

CONSTRUCTED IN
 PRINCESS COURT
 PORTION OF TRACT No. 30201
 PRIVATE CONTRACT NO. 7223

W.S. 62
 1 SHEET; 2 PAGES
 SCALE: VERT. 1"=4' HORIZ. 1"=40' JANUARY, 1965
 PREPARED IN THE OFFICES OF

PRECISION INCORPORATED
 J. E. Gault
 REG. C. E. NO. 8448

FOR LEGEND SEE PLAN NO. S-1

NOTE:
 GRADES TO WHICH THIS IMPROVEMENT IS TO BE CONSTRUCTED ARE SHOWN ON PLANS AND PROFILES. GRADE POINTS FOR TOP OF CURBS, CENTER LINE OF STREETS, OR CENTER LINE OF ALLEYS ARE SHOWN BY CIRCLES ON PROFILES AT ALL POINTS BY THEIR DESIGNATED POINTS. THE GRADE SHALL BE ESTABLISHED SO AS TO CONFORM TO A STRAIGHT LINE DRAWN BETWEEN SAID DESIGNATED POINTS. ELEVATIONS ARE IN FEET ABOVE U.S.C. & G.S. SEA LEVEL DATUM OF 1929.
 THIS DRAWING AND THE DATA HEREON ARE HEREBY MADE A PART OF THE SPECIFICATIONS.
 WORK SHALL BE CONSTRUCTED ACCORDING TO STANDARD SPECIFICATIONS DATED, REPEAL 22 1962, ON FILE IN THE OFFICE OF THE COUNTY ENGINEER AND SHALL BE PROSECUTED ONLY IN THE PRESENCE OF THE COUNTY ENGINEER.
 BEFORE WORK CAN BE STARTED, THE CONTRACTOR MUST OBTAIN A PERMIT TO EXCAVATE IN COUNTY STREETS FROM THE L.A. COUNTY ROAD DEPT., DISTRICT OFFICE NO. 5, AND PAY A FEE TO THE COUNTY ENGINEER, ROOM 338, COUNTY BUILDING, 120 SOUTH SPRING STREET, LOS ANGELES, CALIFORNIA.
 CONSTRUCTION INSPECTION AND RECORD PLANS.
 APPROVAL OF THIS PLAN BY THE COUNTY OF LOS ANGELES DOES NOT CONSTITUTE A REPRESENTATION AS TO THE ACCURACY OF THE LOCATION OF OR THE EXISTENCE OR NON-EXISTENCE OF ANY UNDERGROUND UTILITY PIPE, OR STRUCTURE WITHIN THE LIMITS OF THE PROJECT. THIS NOTE APPLIES TO ALL PAGES.
 IF WORK IS TO BE DONE IN A STATE HIGHWAY, A PERMIT MUST BE OBTAINED FROM THE STATE OF CALIFORNIA, DIVISION OF HIGHWAYS, 120 SOUTH SPRING STREET, LOS ANGELES, CALIFORNIA.

COUNTY OF LOS ANGELES, CALIFORNIA
 JOHN A. LAMBIE, COUNTY ENGINEER J. D. PARKHURST, CHIEF ENGINEER
 REG. SAN. DIST. NO. 36

APPROVED BY: [Signature] ASSISTANT SANITATION ENGINEER

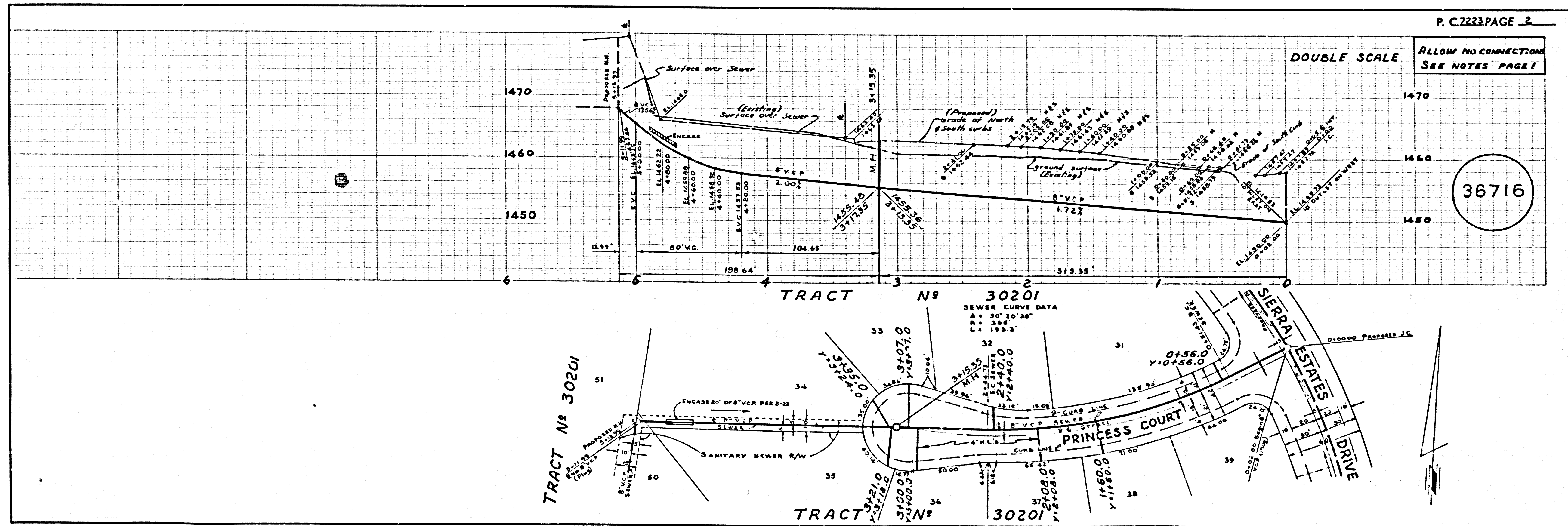
CHECKED BY: [Signature] W.S. 62 REG. C.E. NO. 7465

36715

J.N. 0364.77

COLLECT CHARGES
 AS INDICATED

Return to Plans 1-7-65



DOUBLE SCALE
 ALLOW NO CONNECTIONS
 SEE NOTE PAGE 1

36716