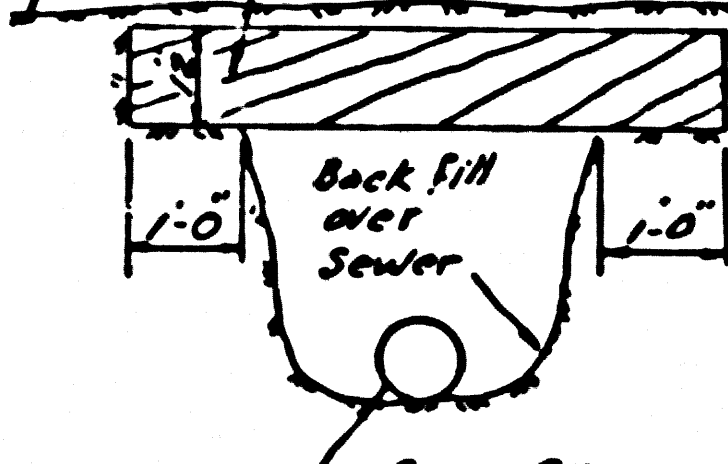


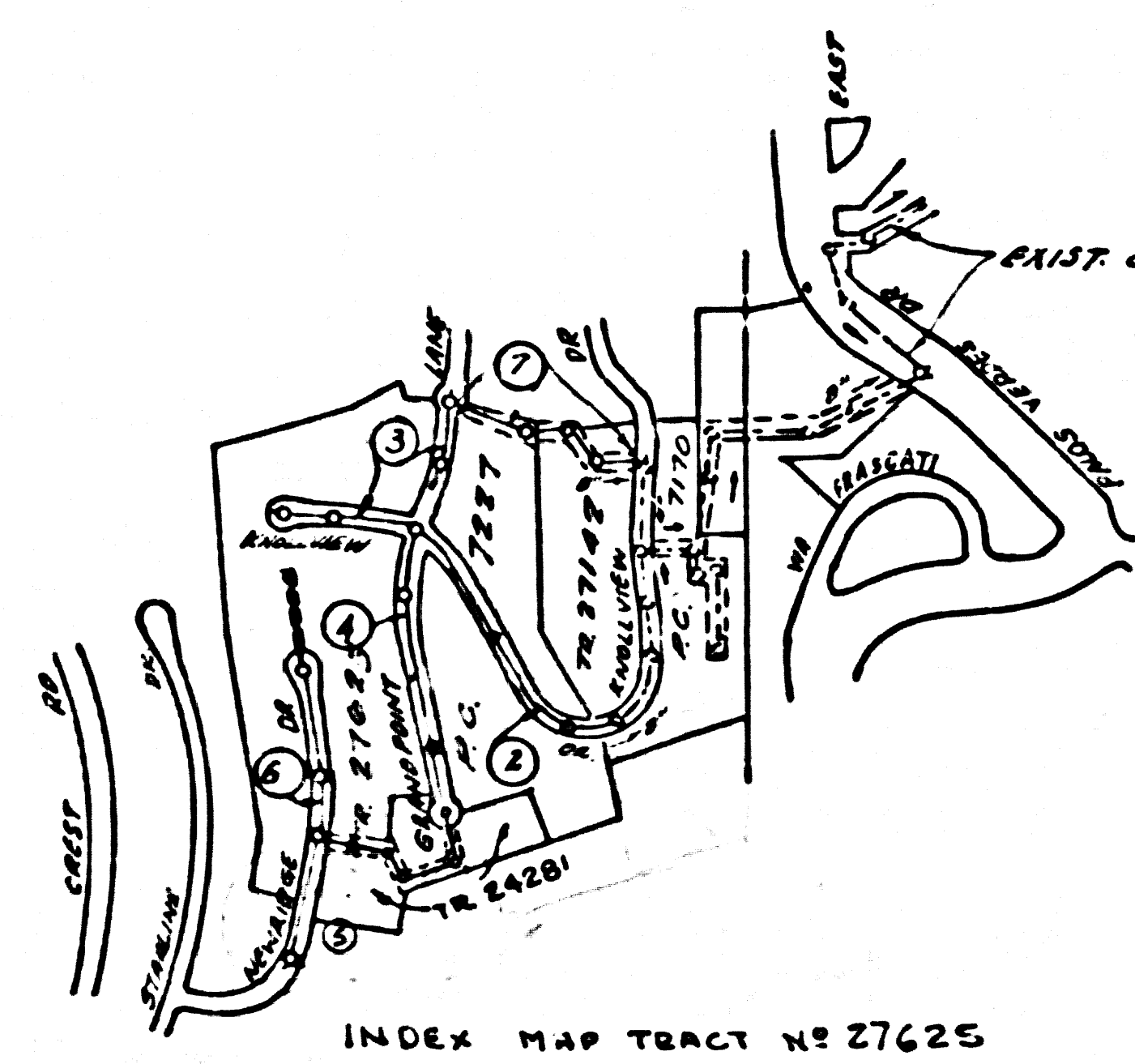
B.M. F.F. 63 ELEV. 707.646  
 PACOS VERDES DR. S. 4' 1/4 Side  
 115' S. of Mirafloles Plaza  
 Bull Spoke in curb  
 FIELD BOOK #122 Page 8

**2" x 12" REDWOOD BAFFLE BOARD DETAIL**

Finished Ground Surface over Sewer  
 2" x 12" Redwood Baffle Board



- Each end of baffle board will extend one foot into undisturbed ground.
- Baffles will be so spaced that the top of the lower baffle shall be level with the bottom of the upper.
- The upper layer of baffle will be 1 foot wide of top soil. Top soil shall be tamped in place and planted with mustard seed and adequately watered until growth is restored.



**ISSUE NO PERMITS UNTIL R/W ON LOTS 47 & 65 OF TR. 27625 ON PAGE 5B IS RECORDED.**

INDEX MAP TRACT NO 27625  
 SCALE 1"=600' P.C. 7227

Revised profile on NEWBIDGE DR. Page 6, A-B  
 From Sta 1+00 to Sta 4+54. Added 16' foot stub  
 Approved: *Edward J. Valach* 3-4-66

**REVISION:**  
 Revised Sewer on Grandpoint Lane and house lateral to Lot No. 35, Page 3B  
 Approved: *Edward J. Valach* 8-6-65  
 Revised surface over Sewer & Sewer Grades Sta 4+72.48 to 6+35, page 7.  
 Approved: *Edward J. Valach*  
 Revised surface over Sewer & Sewer Grades Sta 3+63.75 to 5+64.00, page 7.  
 Approved: *Edward J. Valach* 8-11-65  
 Revised plan of profile on SA - 6A - 6B, Lots 1, 3 and 5, 2021  
 revised lots 35, 36, 37 and 38, 2122, Change in  
 grading plan & road grades for 2122, Change in  
 Approved: *Edward J. Valach* 4-1-66

**DOUBLE SCALE  
 LOMITA BLDG. DIST. NO. 12**

PROFILE ALIGNMENT AND GRADE OF  
**SANITARY SEWERS PAGE 1**  
 TO BE CONSTRUCTED IN  
**TRACT NO 27625**

**PRIVATE CONTRACT NO. 7227**

W.S. 27  
 4 SHEETS, 7 PAGES  
 SCALE: HORIZ. 1"=80' VERT. 1"=4' DEC. 1964  
 PREPARED IN THE OFFICES OF  
**E. L. PEARSON & ASSOC., INC.**  
 REG. C. E. NO. 9757

38643

FOR LEGEND SEE PLAN NO. S-1  
 NOTES:  
 GRADES TO WHICH THIS IMPROVEMENT IS TO BE CONSTRUCTED ARE SHOWN ON PLANS AND PROFILES. GRADE POINTS FOR TOP OF CURBS, CENTER LINE OF STREETS, OR CENTER LINE OF ALLEYS ARE SHOWN BY CIRCLES ON PLANS. AT ALL POINTS BETWEEN DESIGNATED POINTS THE GRADE SHALL BE ESTABLISHED SO AS TO CONFORM TO A STRAIGHT LINE DRAWN BETWEEN SAID DESIGNATED POINTS. ELEVATIONS ARE IN FEET ABOVE U.S.C. & G.S. SEA LEVEL DATUM OF 1929.  
 THIS DRAWING AND THE DATA HEREON ARE HEREBY MADE A PART OF THE SPECIFICATIONS.  
 BEFORE WORK CAN BE STARTED, THE CONTRACTOR MUST OBTAIN A PERMIT TO EXCAVATE IN COUNTY STREETS FROM THE L.A. COUNTY ROAD DEPT., DISTRICT OFFICE NO. 3, AND PAY A FEE TO THE COUNTY ENGINEER, ROOM 305, COUNTY ENGINEERING BUILDING, 110 WEST SECOND STREET OF P.O. BOX 347, LOS ANGELES, CALIFORNIA. SUFFICIENT TO COVER THE COST OF CONSTRUCTION INSPECTION AND RECORD PLANS.  
 APPROVAL OF THIS PLAN BY THE COUNTY OF LOS ANGELES DOES NOT CONSTITUTE A REPRESENTATION AS TO THE ACCURACY OF THE LOCATION OR THE EXISTENCE OR NON-EXISTENCE OF ANY UNDERGROUND UTILITY PIPE, OR STRUCTURE WITHIN THE LIMITS OF THE PROJECT. THIS NOTE APPLIES TO ALL PAGES OF THIS DRAWING.  
 IF WORK IS TO BE DONE IN A STATE HIGHWAY, A PERMIT MUST BE OBTAINED FROM THE STATE OF CALIFORNIA, DIVISION OF HIGHWAYS, 120 SOUTH SPRING STREET, LOS ANGELES, CALIFORNIA.

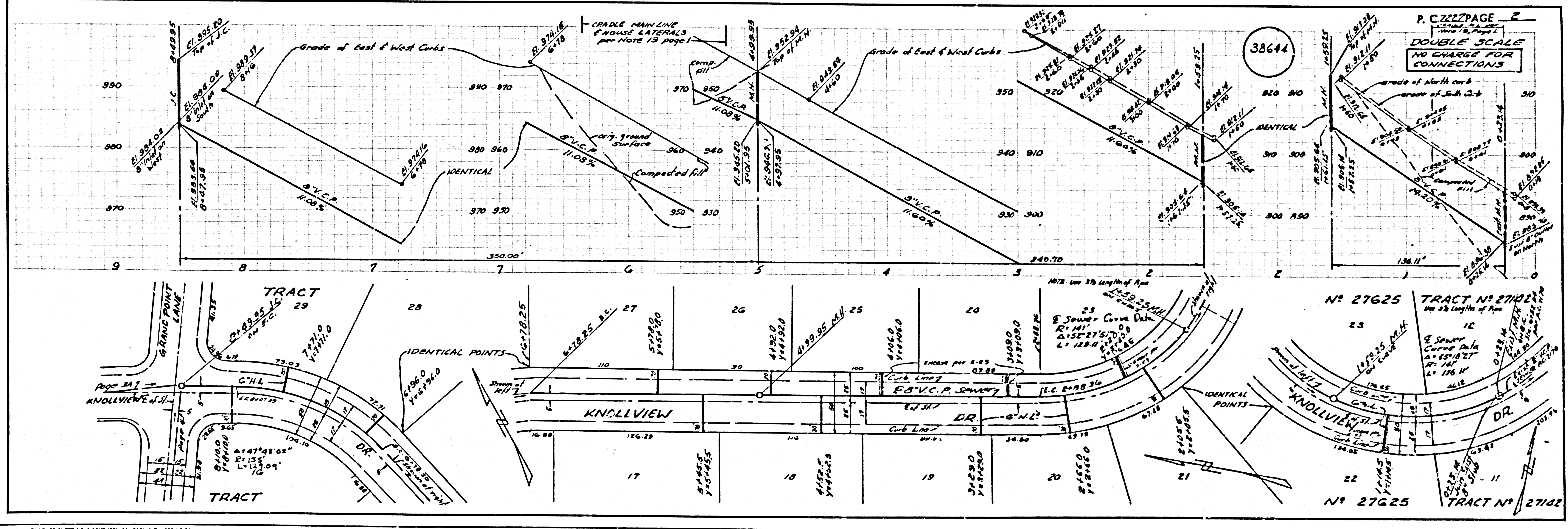
**COUNTY OF LOS ANGELES, CALIFORNIA**  
 JOHN A. LAMBIE, COUNTY ENGINEER  
 J. D. PARKHURST, CHIEF ENGINEER  
 CO. SAN. DIST. NO. 5  
 APPROVED BY: *Edward J. Valach* ASSISTANT SANITATION ENGINEER  
 APPROVED BY: *Edward J. Valach* CHIEF ENGINEER  
 SUBMITTED BY: *Edward J. Valach* SPECIAL ENGINEER  
 CHECKED BY: *Edward J. Valach* REG. C. E. NO. 9757

- PROVIDE STAKES ON THE PROPERTY LINE OR PROPERTY LINES PRODUCED AT RIGHT ANGLES TO THE SEWER LINE AT THE CENTER LINE OF EACH MANHOLE.
- NO REPRESENTATIVE OF THE COUNTY ENGINEER WILL SURVEY OR LAY OUT ANY PORTION OF THE WORK.
- THE PRIVATE ENGINEER SHALL FURNISH THE COUNTY ENGINEER WITH GRADE SHEETS AND STATIONING FOR ALL HOUSE LATERALS AND Y BRANCHES AND SHALL PROVIDE STAKES FOR THEM AT THEIR PROPER LOCATIONS WITH STATIONING PLAINLY MARKED. ALL HOUSE LATERALS SHALL BE CONSTRUCTED IN A STRAIGHT ALIGNMENT AT RIGHT ANGLES FROM THE MAIN LINE SEWER EXCEPT AS SHOWN ON THE PLANS. HOUSE LATERALS FROM CHIMNEYS SHALL NOT HAVE AN ANGLE OF LESS THAN 45° WITH THE MAIN LINE SEWER. ANY CHANGE IN ALIGNMENT SHALL BE REQUESTED IN WRITING BY THE PRIVATE ENGINEER.
- THE PRIVATE ENGINEER SHALL FURNISH THE HOUSE LATERAL DEPTH AT THE PROPERTY LINE BELOW THE TOP OF CURB ELEVATION FOR EACH HOUSE LATERAL ON THE GRADE SHEET.
- NO REVISIONS SHALL BE MADE IN THESE PLANS WITHOUT THE APPROVAL OF THE COUNTY ENGINEER.
- THE CONTRACTOR SHALL NOTIFY THE CONSTRUCTION DIVISION BY TELEPHONE, MADRUGH 1-4707, EXT. 8839, AT LEAST TWENTY-FOUR HOURS BEFORE STARTING ANY WORK UNDER THIS CONTRACT.
- MANHOLES SHALL BE BRICK SEWER STRUCTURES PER S-3 PRECAST CONCRETE MANHOLES PER S-5 OR S-6, MAY BE USED AS AN ALTERNATE IN LOCATIONS APPROVED BY THE COUNTY ENGINEER.
- USE STANDARD MANHOLE FRAMES AND COVERS, S-10, EXCEPT AS NOTED.
- MANHOLE TOPS IN UNIMPROVED RIGHTS-OF-WAY TO BE 30 INCHES ABOVE FINISHED GRADE.
- USE 12" L.A. STRENGTH PIPE. ALL PIPE IS STANDARD DEPTH EXCEPT AS NOTED.
- USE MECHANICAL COMPRESSION JOINTS FOR ALL V.C.P. JOINTS PER SPEC. S-4, 4-F & 9.
- WHERE FIVE GROUND WATERS ARE ENCOUNTERED DURING THE CONSTRUCTION OF THE SEWER, THE V.C.P. JOINTS SHALL BE OF JOINT COMPOUND PER SPEC. S-4, 4-F & 9, OR MECHANICAL COMPRESSION JOINTS PER SPEC. S-4.
- IF A POWER POLE IS WITHIN THREE FEET OF THE SEWER, THE SEWER SHALL BE ENCASED, PER S-23 TWO FEET ON EACH SIDE FROM THE POINT OF INTERFERENCE.
- IF DURING THE COURSE OF CONSTRUCTION IT IS DETERMINED THAT THERE IS LESS THAN FOUR FEET OF COVER OVER THE TOP OF A MAIN LINE OR HOUSE LATERAL V.C.P. SEWER WHICH IS NOT INDICATED ON THE PLANS, THE PIPE SHALL BE ENCASED PER S-23 UNLESS OTHERWISE APPROVED BY THE COUNTY ENGINEER.
- HOUSE LATERALS TO BE CONSTRUCTED WITH INVERTS AT PROPERTY LINE... FEET BELOW CURB GRADE EXCEPT AS NOTED.
- RESURFACE ALL TRENCHES WITHIN PAVED AREAS TO MEET L.A. COUNTY ROAD DEPT. OR CALIFORNIA STATE HIGHWAY REQUIREMENTS IN ACCORDANCE WITH PERMITS.
- FOR ALLOWABLE LEAKAGE TEST USE FORMULA NO. 1, SPEC. SEC. 54.
- ALL STATE & LOCAL TRENCH SAFETY ORDERS WILL BE RIGIDLY ENFORCED.
- CONSTRUCTION IN FILLED AREAS  
 (a) AN ACCEPTABLE CERTIFICATION OF CONSTRUCTION DEFECT REMEDY SHALL BE SUBMITTED TO THE CONSTRUCTION DIVISION, CONSTRUCTION PERMITS AND TO BE MADE IN ACCORDANCE WITH ALL THE STANDARD CONDITIONS OF THE COUNTY OF LOS ANGELES.  
 (b) NO CONSTRUCTION SHALL BE PERMITTED IN FILLED AREAS UNLESS THE PRIVATE ENGINEER HAS OBTAINED A PERMIT TO EXCAVATE IN COUNTY STREETS FROM THE L.A. COUNTY ROAD DEPT., DISTRICT OFFICE NO. 3, AND PAY A FEE TO THE COUNTY ENGINEER, ROOM 305, COUNTY ENGINEERING BUILDING, 110 WEST SECOND STREET OF P.O. BOX 347, LOS ANGELES, CALIFORNIA. SUFFICIENT TO COVER THE COST OF CONSTRUCTION INSPECTION AND RECORD PLANS.  
 (c) THE PRIVATE ENGINEER SHALL BE RESPONSIBLE FOR OBTAINING ALL NECESSARY PERMITS AND FOR THE PROTECTION OF ALL EXISTING UTILITIES.  
 (d) THE PRIVATE ENGINEER SHALL BE RESPONSIBLE FOR THE PROTECTION OF ALL EXISTING UTILITIES AND FOR THE PROTECTION OF ALL EXISTING UTILITIES.
- House laterals not to be built beyond 36" as shown.

**COLLECT CHARGES AS INDICATED**  
*John H. Michael* 6/23/65

NO CONNECTIONS FOR THE DISPOSAL OF INDUSTRIAL WASTES SHALL BE MADE TO SEWERS SHOWN ON THESE DRAWINGS WITHOUT WRITTEN PERMISSION FROM THE CHIEF ENGINEER AND GENERAL MANAGER OF THE COUNTY SANITATION DISTRICTS

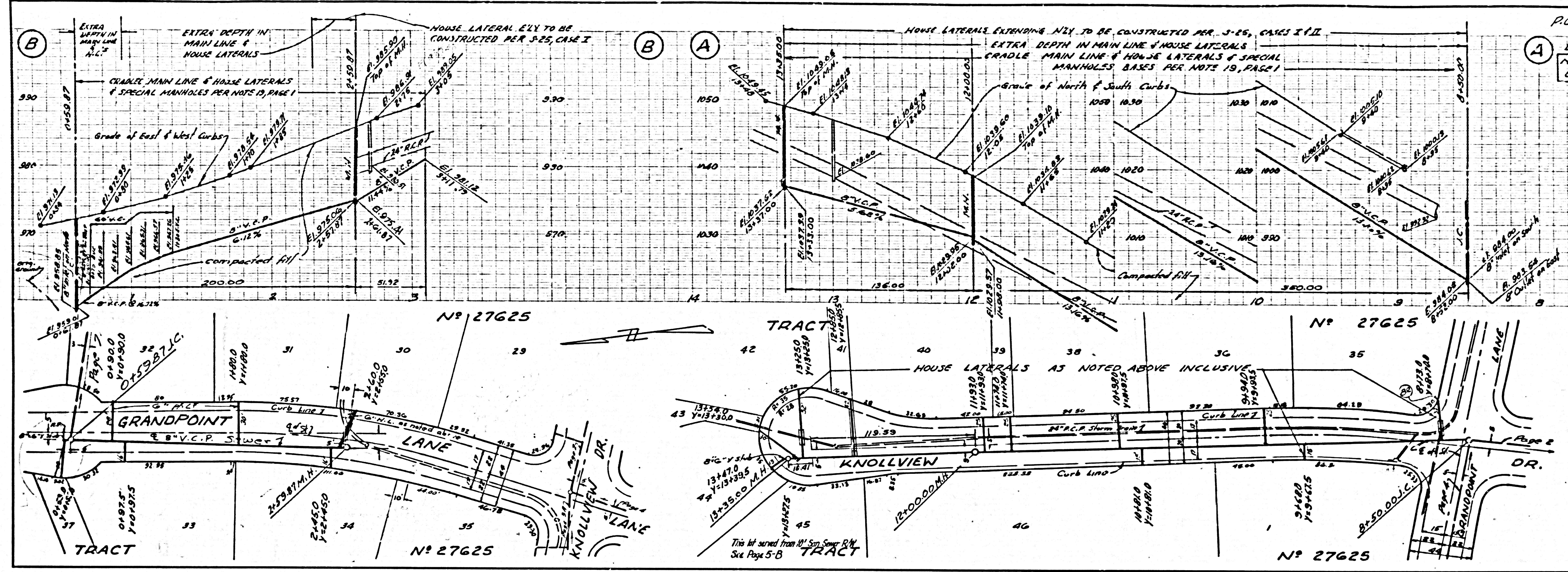
J.N. 0364.79





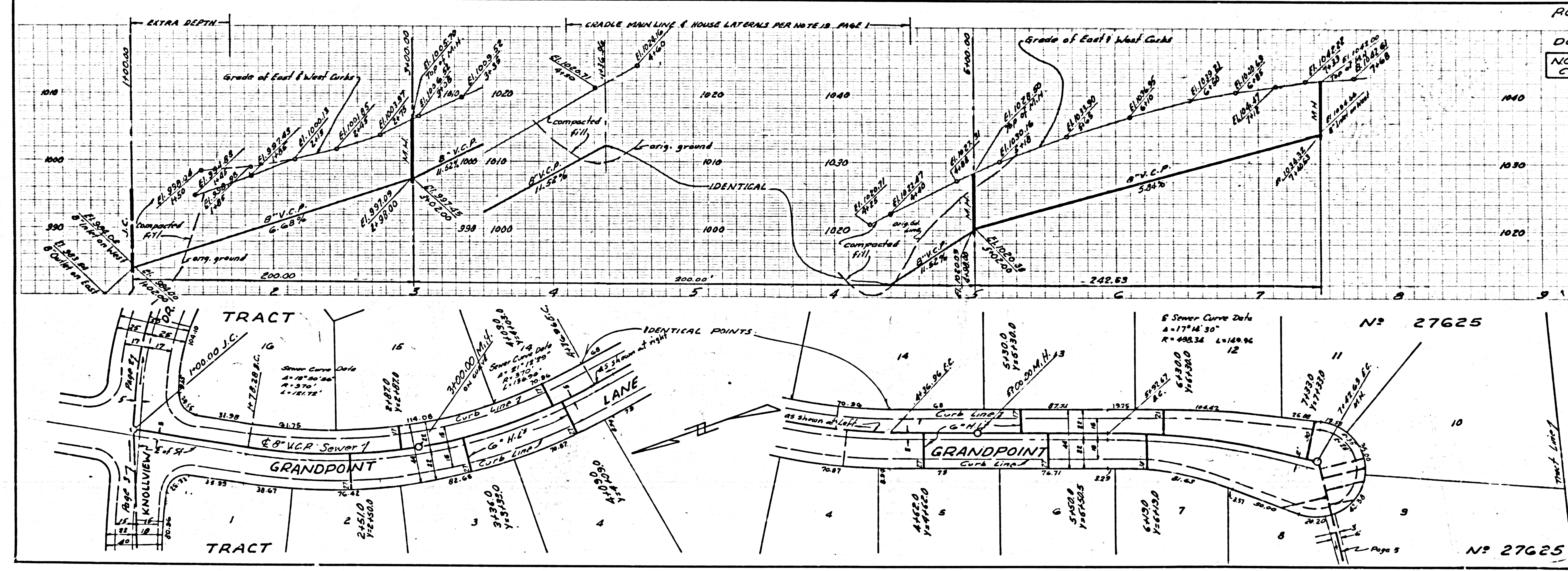
DOUBLE SCALE  
NO CHARGE FOR  
CONNECTIONS

38645



DOUBLE SCALE  
NO CHARGE FOR  
CONNECTIONS

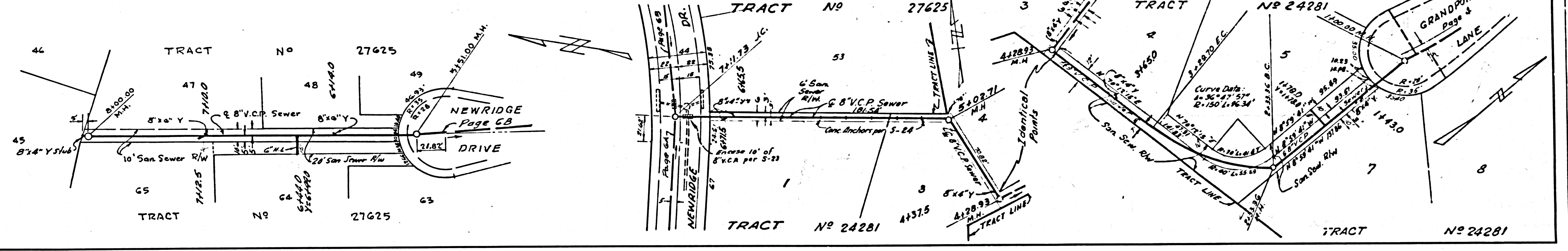
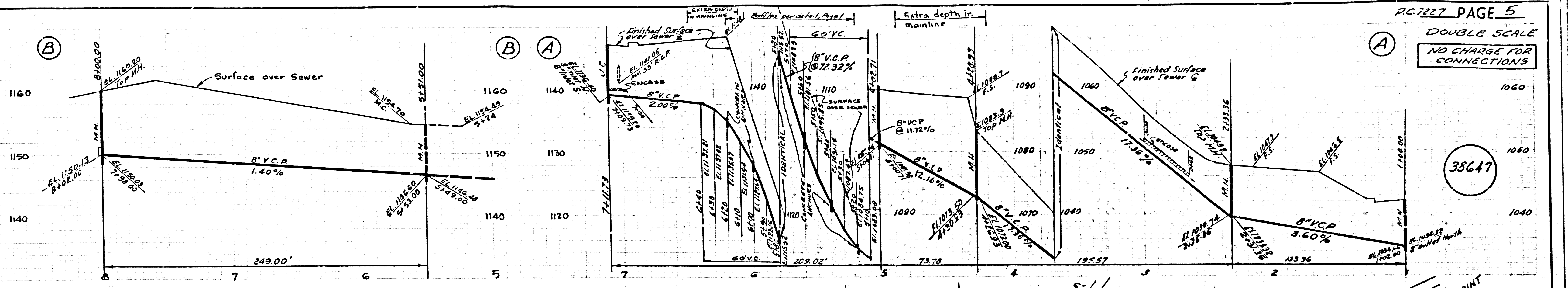
38646





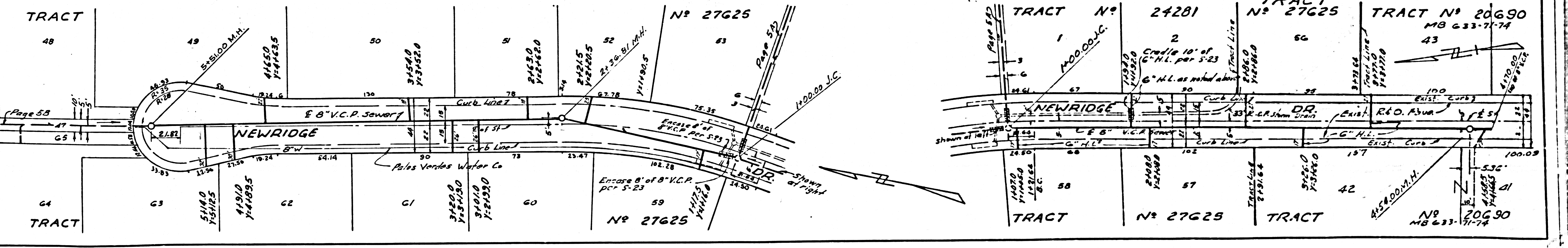
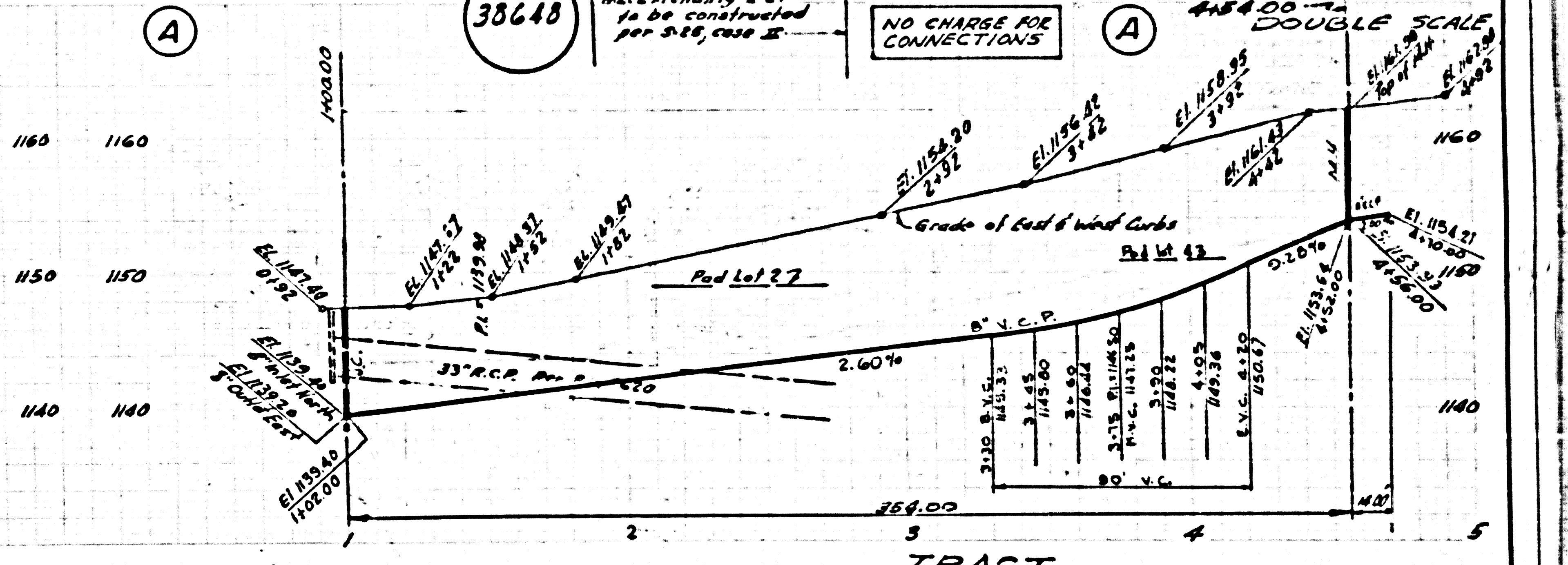
DOUBLE SCALE  
NO CHARGE FOR CONNECTIONS

38647

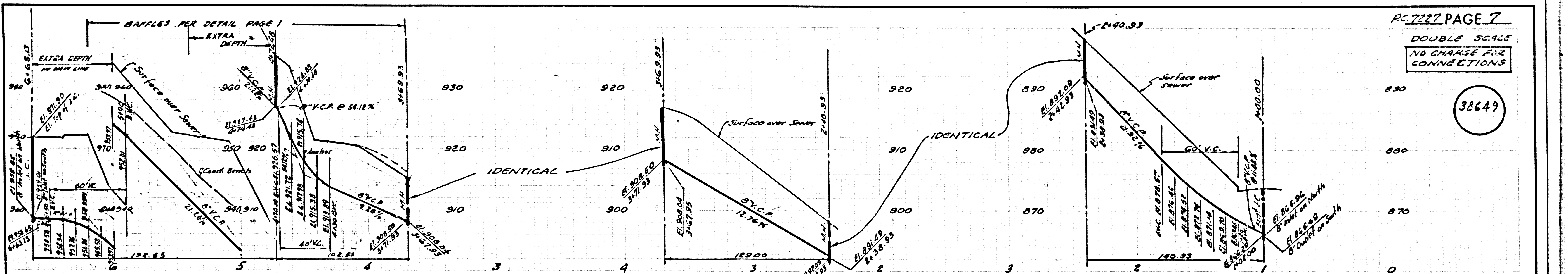


DOUBLE SCALE  
NO CHARGE FOR CONNECTIONS

38648







PC-7222 PAGE 7  
 DOUBLE SCALE  
 NO CHARGE FOR CONNECTIONS

38649

