

B.M. S.G. 1537 ELEV. 249.254
 L&T in N.W. edge of 4' Conc Walk
 of Building 375 Ft. So. & Rush
 Street 351 Ft. E. Central Avenue.
 WHITTIER QUAD. 1955

SOUTH EL MONTE BLDG. DIST. NO. 5.04

PROFILE ALIGNMENT AND GRADE OF
 SANITARY SEWERS PAGE 1
 TO BE CONSTRUCTED IN

R/W E/O EL POCHE STREET
 PRIVATE CONTRACT NO. 7234

W.S. 3746-1
 1 SHEETS, 2 PAGES

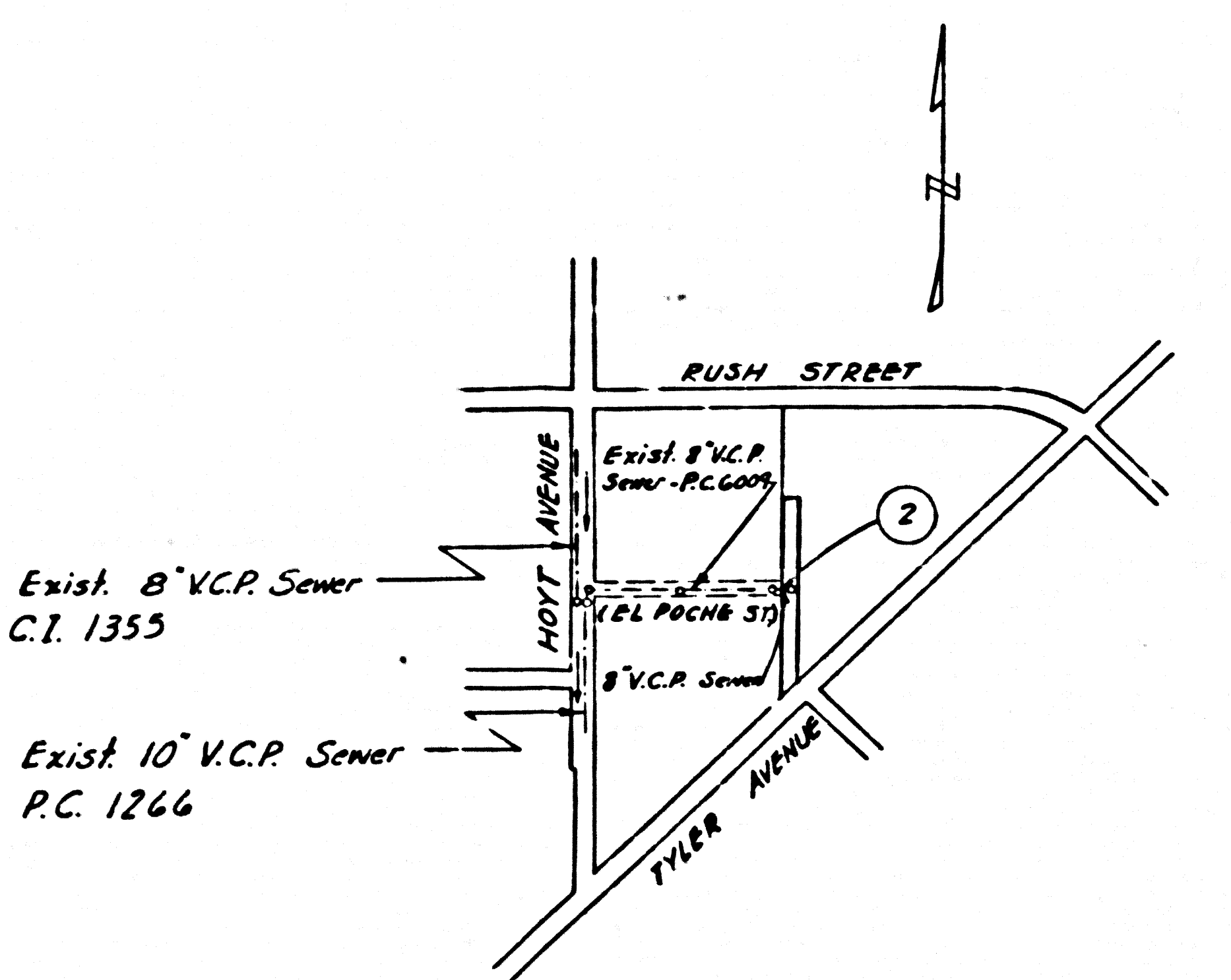
SCALE: VERT. 1"=4' HORIZ. 1"=40'

PREPARED IN THE OFFICES OF
 NORCO ENGR. CO.

By: *R. J. [Signature]*
 REG. C.E. NO. 7979

FOR LEGEND SEE PLAN NO. S-64

37038



INDEX MAP
 SCALE: 1"=400'
 P.C. No 7234

- NOTES:
1. PROVIDE STAKES ON THE PROPERTY LINE OR PROPERTY LINES PROCEEDED AT RIGHT ANGLES TO THE SEWER LINE AT THE CENTER, THE OF EACH MANHOLE.
 2. NO REPRESENTATIVE OF THE CITY ENGINEER WILL SUPPLY OR LAY OUT ANY PORTION OF THE WORK.
 3. THE PRIVATE ENGINEER SHALL FURNISH THE CITY ENGINEER WITH GRADY SHEETS AND STATIONING FOR ALL HOUSE LATERALS AND Y BRANCHES AND SHALL PROVIDE STAKES FOR THEM AT THEIR PROPER LOCATIONS WITH STATIC AND PLAINLY MARKED. ALL HOUSE LATERALS SHALL BE CONSTRUCTED IN A STRAIGHT ALIGNMENT AT RIGHT ANGLES FROM THE MAIN LINE SEWER EXCEPT AS SHOWN ON THE PLANS. HOUSE LATERALS FROM CHIMNEYS SHALL NOT HAVE AN ANGLE OF LESS THAN 45° WITH THE MAIN LINE SEWER. ANY CHANGE IN ALIGNMENT SHALL BE INDICATED BY THE PRIVATE ENGINEER.
 4. NO REVISIONS SHALL BE MADE IN THESE PLANS WITHOUT THE APPROVAL OF THE CITY ENGINEER.
 5. THE CONTRACTOR SHALL NOTIFY THE CONSTRUCTION DIVISION BY TELEPHONE, MADISON 9-4747, EXT. 8152, AT LEAST TWENTY-FIVE (25) DAYS BEFORE STARTING ANY WORK UNDER THIS CONTRACT.
 6. MANHOLES SHALL BE BRICK SEWER STRUCTURES PER S.C.S. PRECAST CONCRETE MANHOLES PER S-6 OR S-6 MAY BE USED AS AN ALTERNATE IN LOCATIONS APPROVED BY THE CITY ENGINEER.
 7. USE STANDARD MANHOLE FRAMES AND COVERS, 5'-6", EXCEPT AS NOTED.
 8. MANHOLE TOPS IN UNIMPROVED RIGHTS-OF-WAY TO BE SIX INCHES ABOVE FINISHED GRADE.
 9. USE EXTRA STRENGTH PIPE. ALL PIPE IS STANDARD DEPTH EXCEPT AS NOTED.
 10. USE MECHANICAL COMPRESSION JOINTS FOR ALL V.C.P. JOINTS PER SPECS., SECS. 36 & 46, 47.
 11. WHERE EVER GROUND WATER IS ENCOUNTERED DURING THE CONSTRUCTION OF THE SEWERS, THE V.C.P. JOINTS SHALL BE OF MECHANICAL COMPRESSION JOINTS PER SPECS., SEC. 36, 46 & 47.
 12. IF A POWER POLE IS WITHIN THREE FEET OF THE SEWER, THE SEWER SHALL BE ENCASED, PER S-75 TWO FEET ON EITHER SIDE FROM THE POINT OF INTERFERENCE.
 13. IF DURING THE COURSE OF CONSTRUCTION IT IS DETERMINED THAT THERE IS LESS THAN FOUR FEET OF COVER OVER THE TOP OF A MAIN LINE OR HOUSE LATERAL V.C.P. SEWER WHICH IS NOT INDICATED ON THE PLANS, THE PIPE SHALL BE ENCASED PER S-75 UNLESS OTHERWISE APPROVED BY THE CITY ENGINEER.
 14. RESURFACE ALL TRENCHES WITHIN PAVED AREAS TO MEET L.A. COUNTY ROAD DEPT. OR CALIFORNIA STATE HIGHWAY REQUIREMENTS IN ACCORDANCE WITH PERMITS.
 15. FOR ALLOWABLE LEAKAGE, USE FORMULA NO. 2, SPECS., SEC. 54.
 16. ALL STATE AND LOCAL TRENCH SAFETY ORDERS SHALL BE STRICTLY ENFORCED.

NO CONNECTIONS FOR THE DISPOSAL OF INDUSTRIAL WASTES SHALL BE MADE TO SEWERS SHOWN ON THESE DRAWINGS WITHOUT WRITTEN PERMISSION FROM THE CHIEF ENGINEER AND GENERAL MANAGER OF THE COUNTY SANITATION DISTRICT.

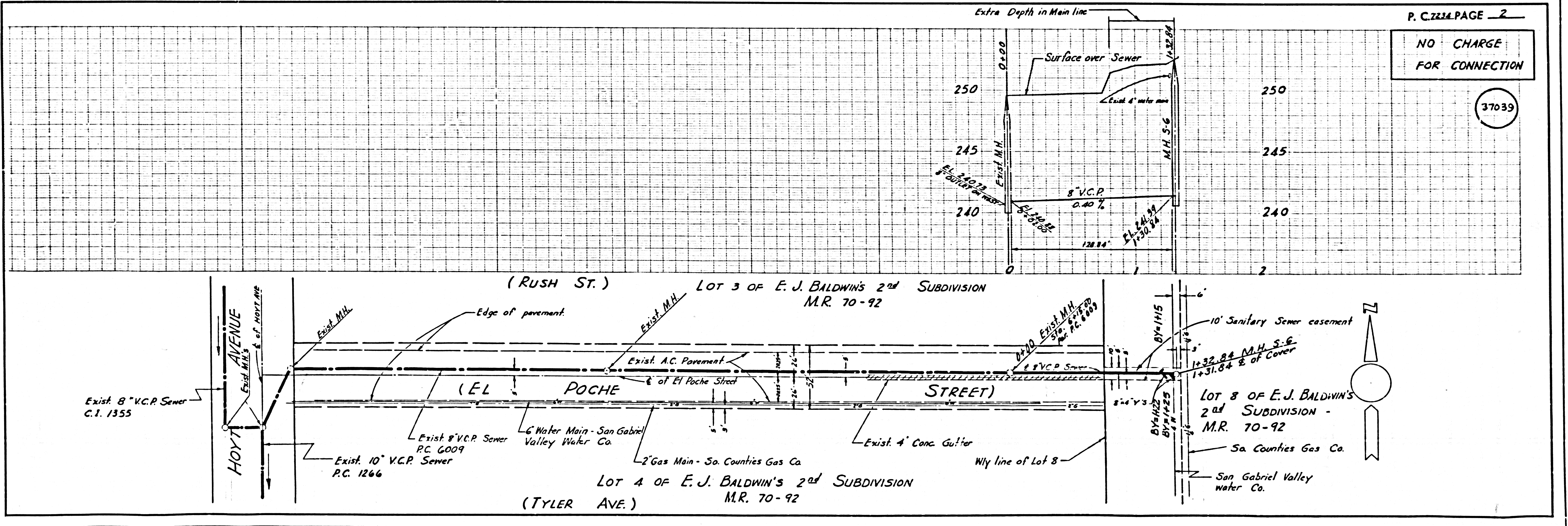
COLLECT CHARGES AS INDICATED
W.G. Jan 2/11/65

APPROVED: *E.T. [Signature]* DATE: 1-28-65
 INDUSTRIAL WASTE DIVISION

NOTE:
 GRADES TO WHICH THIS IMPROVEMENT IS TO BE CONSTRUCTED ARE SHOWN ON PLANS AND PROFILES. GRADE POINTS FOR TOP OF CURBS, CENTER LINE OF STREETS, OR CENTER LINE OF ALLEYS ARE SHOWN BY DASHES ON PROFILES AT ALL POINTS BETWEEN DESIGNATED POINTS. THE GRADE SHALL BE ESTABLISHED TO AS TO CONFORM TO A STRAIGHT LINE DRAWN BETWEEN SAID DESIGNATED POINTS. THIS DRAWING AND THE DATA HEREON ARE HEREBY MADE A PART OF THE SPECIFICATIONS. BEFORE WORK CAN BE STARTED, THE CONTRACTOR MUST OBTAIN A PERMIT TO EXCAVATE IN CITY STREETS FROM THE L.A. COUNTY ROAD DEPT., DISTRICT OFFICE NO. 1, AND PAY A FEE TO THE CITY OF SOUTH EL MONTE, CALIFORNIA, SUFFICIENT TO COVER THE COST OF CONSTRUCTION INSPECTION AND RECORDED PLANS. APPROVAL OF THIS PLAN BY THE CITY OF SOUTH EL MONTE DOES NOT CONSTITUTE A REPRESENTATION AS TO THE ACCURACY OF THE LOCATION OF OR THE EXISTENCE OR NON-EXISTENCE OF ANY UNDERGROUND UTILITY PIPE, OR STRUCTURE WITHIN THE LIMITS OF THIS PROJECT. THIS NOTE APPLIES TO ALL PAGES. IF WORK IS TO BE DONE IN A STATE HIGHWAY, A PERMIT MUST BE OBTAINED FROM THE STATE OF CALIFORNIA, DIVISION OF HIGHWAYS, 128 SOUTH SPRING STREET, LOS ANGELES, CALIFORNIA.

CITY OF SOUTH EL MONTE, CALIFORNIA
 JOHN A. LAMBIE, CITY ENGINEER
 APPROVED BY: *[Signature]* ASSISTANT SANITATION ENGINEER
 SUBMITTED BY: *[Signature]* REGIONAL ENGINEER
 CHECKED BY: *[Signature]* REG. C.E. NO. 7755

APPROVED BY: *[Signature]* J. D. PARKHURST, CHIEF ENGINEER
 CO. SAN. DIST. NO. 28
 APPROVED BY: *[Signature]* OFFICE ENGINEER



P. C. 7234 PAGE 2

NO CHARGE FOR CONNECTION

37039