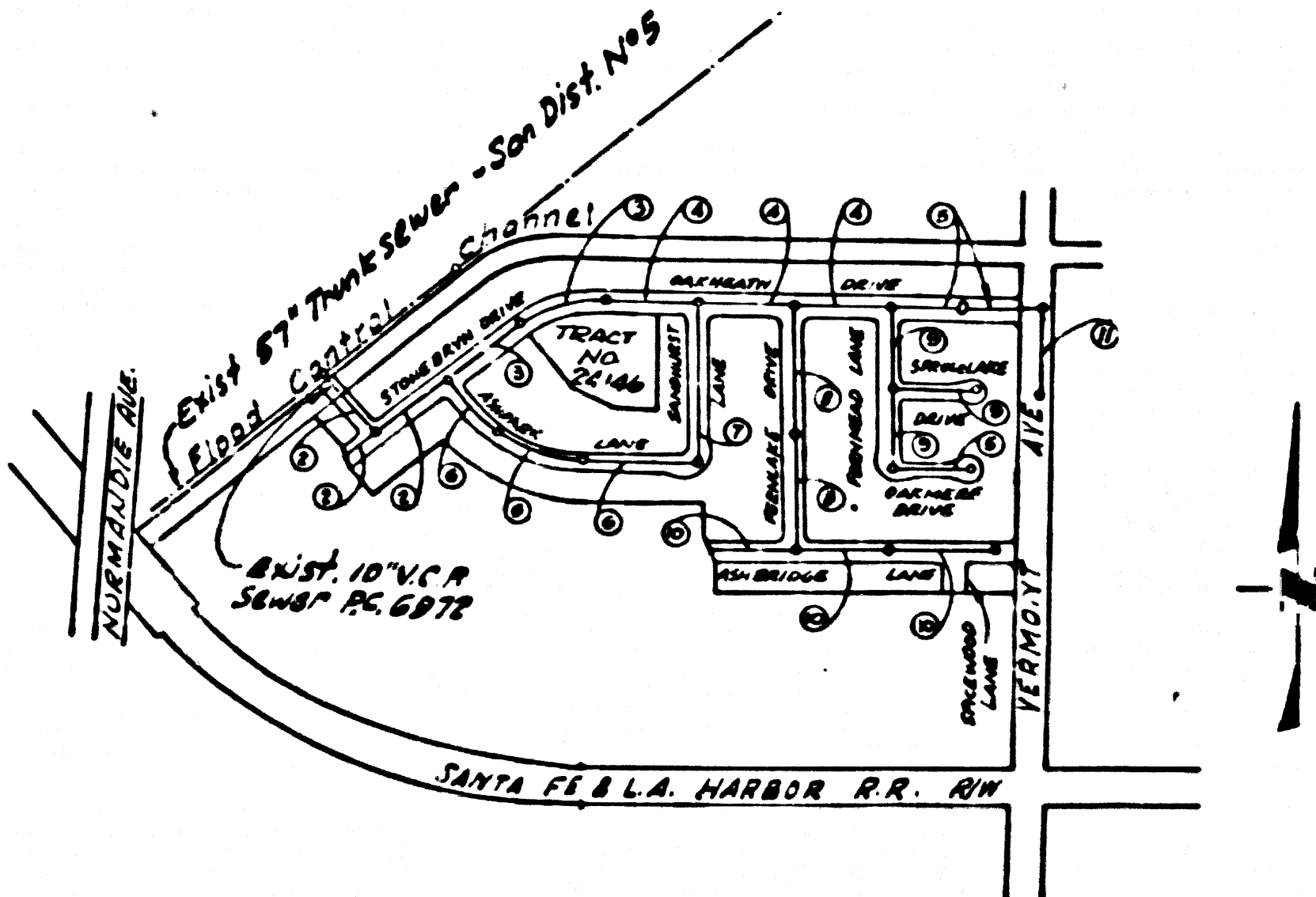


B.M. SY-3071-A ELEV. 33.103
 Square Head Spike Near
 Center of Curb Return, N.E.
 Corner Lomita Blvd. & Vermont Av.,
 1" North of L. & T.
 BASE LINE QUAD. 19.35



INDEX MAP
 1" = 600'
 TRACT NO 3017G
 RC. 7236

REVISION
 Delete Section 7-B, remove
 Stanchion Lane Sections 3-A, 3-B,
 & amend 600' Tract No. 24146
 to Index Map.
 Approved: *Bernard H. Uebel*
 R.C.E. No. 10653

REVISION
 Realigned 8" V.C.P. Sower
 page 11, between Sta. 2133.93
 & Sta. 2140.00 from 2" to 3" & 4" & 6"
 Moved from 80.96' to 31.46'
 Approved: *Bernard H. Uebel*
 Reg. C.E. No. 10653

LOMITA BLDG. DIST. NO. 12

PROFILE ALIGNMENT AND GRADE OF
 SANITARY SEWERS PAGE 1

TRACT NO 3017G
 PRIVATE CONTRACT NO. 7236

W.S. 28
 6 SHEETS, 11 PAGES
 SCALE: VERT. 1" = 4' HORIZ. 1" = 40'
 June, 1964 37701
 PREPARED IN THE OFFICES OF
 E.L. PEARSON AND ASSOCIATES
 BY: *James L. Pearson*
 REG. C. E. NO. 9787
 FOR LEGEND SEE PLAN NO. S-1

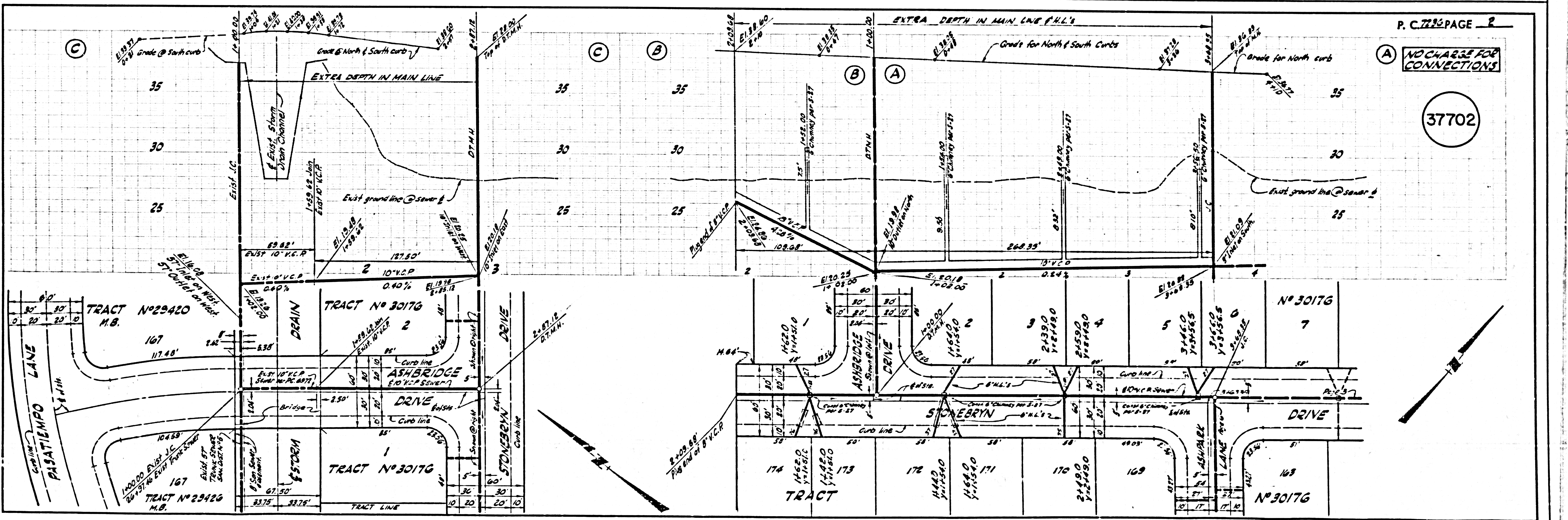
13. Construction in filled areas.
- On acceptable certification of compaction test result, shall be submitted to the construction division, compaction tests are to be made, in accordance with A.S.T.M. Standard Method of T-99 - D 858 - 47.
 - No construction is permitted in filled areas where the relative density of compaction is less than 80%.
 - If the relative density of compaction is less than 90% all main lines are to have lateral that be graded per S-23 or have special Gate Valve per S-23. Gate W. Special M.N. Gate per S-16 are required.
 - If the relative density of compaction is 90% or greater then special provision in (c) are not required.

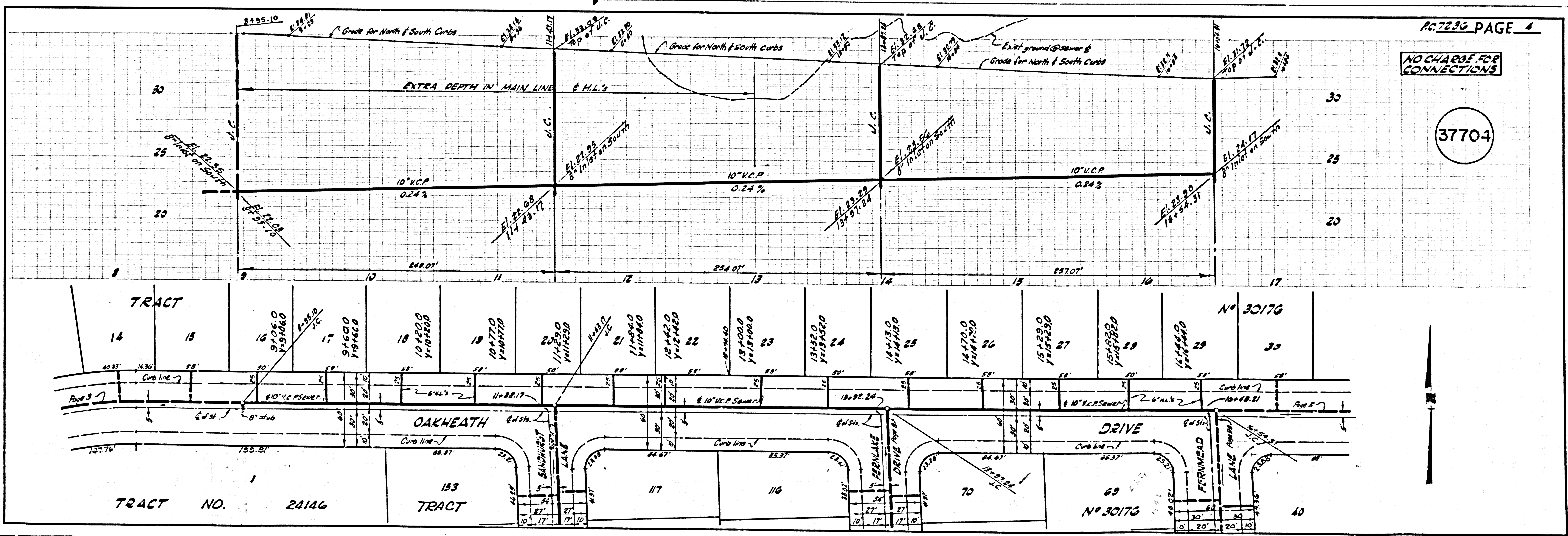
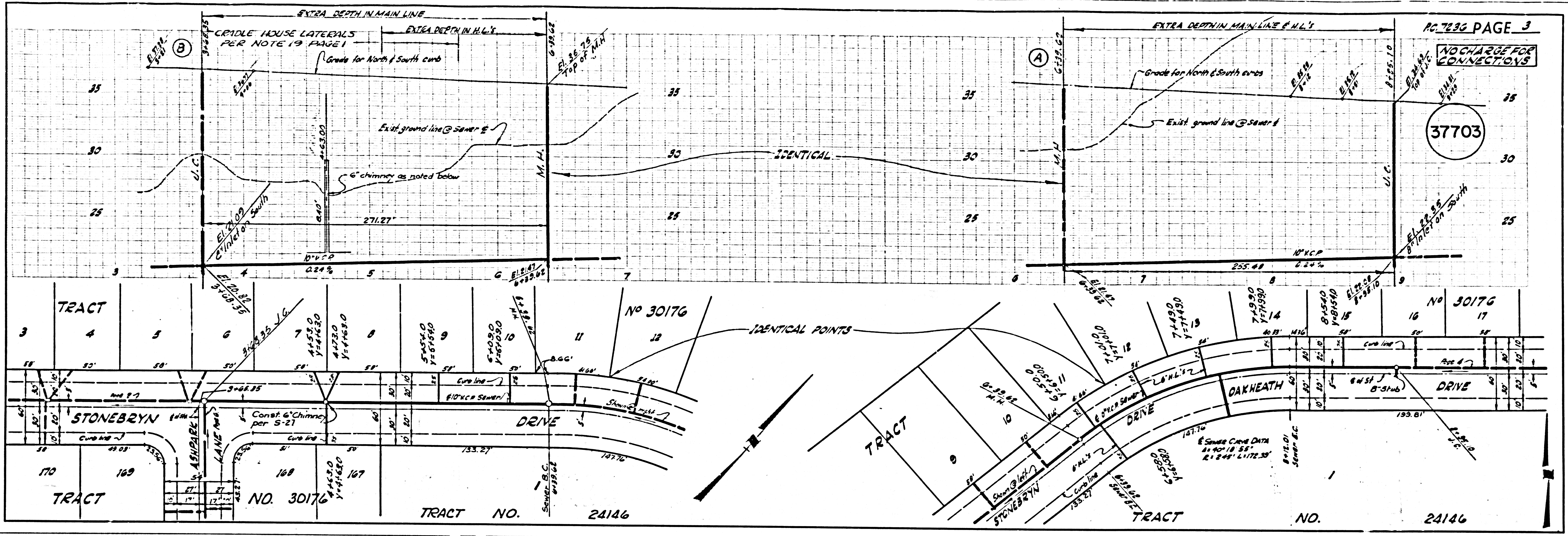
- NOTES:
- PROFILES SHOWN ON THE PROPERTY LINE OR PROPERTY LINES PRODUCED AT RIGHT ANGLES TO THE ADJACENT LINE AT THE CENTER LINE OF 12" OR MANHOLE.
 - NO REPRESENTATIVE OF THE COUNTY ENGINEER WILL EXAMINE OR LAY OUT ANY PORTION OF THE WORK.
 - THE PRIVATE ENGINEER SHALL FURNISH THE COUNTY ENGINEER WITH GRADE SHEETS AND STATIONING FOR ALL HOUSE LATERALS AND Y BRANCHES AND SHALL PROVIDE STAKES FOR THEM AT THEIR PROPER LOCATIONS WITH STATIONING PLAINLY MARKED. ALL HOUSE LATERALS SHALL BE CONSTRUCTED IN A STRAIGHT ALIGNMENT AT RIGHT ANGLES FROM THE MAIN LINE SEWER EXCEPT AS SHOWN ON THE PLANS. HOUSE LATERALS FROM CHIMNEYS SHALL NOT HAVE AN ANGLE OF LESS THAN 45° WITH THE MAIN LINE SEWER. ANY CHANGE IN ALIGNMENT SHALL BE REQUESTED BY THE PRIVATE ENGINEER.
 - THE PRIVATE ENGINEER SHALL FURNISH THE HOUSE LATERAL EXCEPT AT THE PROPERTY LINE BELOW THE TOP OF CURB ELEVATION FOR EACH HOUSE LATERAL OR IN GRADE EXCEPT AS NOTED.
 - NO REVISIONS SHALL BE MADE IN THESE PLANS WITHOUT THE APPROVAL OF THE COUNTY ENGINEER.
 - THE CONTRACTOR SHALL NOTIFY THE CONSTRUCTION DIVISION BY TELEPHONE, MAIL OR BY MAIL, AT LEAST TWENTY-FOUR HOURS BEFORE STARTING ANY WORK UNDER THIS CONTRACT.
 - MANHOLES SHALL BE RICK SEWER STRUCTURES PER S-3 PERCAST CONCRETE MANHOLES PER S-5 OR S-6 MAY BE USED AS AN ALTERNATE IN LOCATIONS APPROVED BY THE COUNTY ENGINEER.
 - USE STANDARD MANHOLE PLATES AND COVERS, S-15 EXCEPT AS NOTED.
 - MANHOLE TOPS IN UNIMPROVED DRIVE-OR-WAY TO BE SIX INCHES ABOVE FINISHED GRADE.
 - USE EXTRA STRENGTH PIPE, ALL PIPE IS STANDARD EXCEPT AS NOTED.
 - USE CHAIN TRENCH OR MECHANICAL COMPRESSION JOINTS FOR ALL V.C.P. JOINTS PER SPEC. SEC. 34.419.
 - ALL STATE AND LOCAL TRENCH SAFETY ORDINANCES WILL BE RIGIDLY ENFORCED.
 - IF A POWER POLE IS WITHIN THREE FEET OF THE SEWER, THE SEWER SHALL BE DEEPER, PER S-22, TWO FEET ON EITHER SIDE FROM THE POLE OF INTERFERENCE.
 - IF DURING THE COURSE OF CONSTRUCTION IT IS DETERMINED THAT THERE IS LESS THAN FOUR FEET OF COVER OVER THE TOP OF A MAIN LINE OR HOUSE LATERAL V.C.P. SEWER WHICH IS NOT INDICATED ON THE PLANS, THE PIPE SHALL BE DEEPER PER S-22 UNLESS OTHERWISE APPROVED BY THE COUNTY ENGINEER.
 - HOUSE LATERALS TO BE CONSTRUCTED WITH INVERTS AT PROPERTY LINE... FEET BELOW CURB GRADE EXCEPT AS NOTED.
 - RESURFACE ALL TRENCHES WITHIN PAVED AREAS TO MEET L.A. COUNTY ROAD DEPT. OR CALIFORNIA STATE HIGHWAY REQUIREMENTS IN ACCORDANCE WITH PERMITS.
 - FOR ALLOWABLE EXHAUST TEST USE FORMULA NO. 1000... SPEC. SEC. 34.
 - The existence and location of any underground utility pipes, conduits or structures shown on these plans are obtained by a search of the available records. To the best of our knowledge there are no existing utility pipes or structures shown on these plans. The contractor is required to take due precautionary measures to protect the utility lines shown and any other lines not on record, or not shown on these drawings. The contractor further assumes all liability and responsibility for the utility pipes, conduits, lines or structures shown or not shown on these drawings.

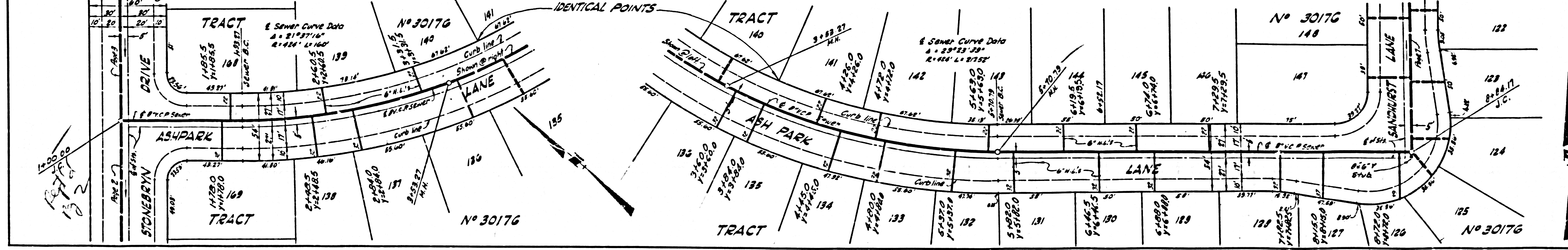
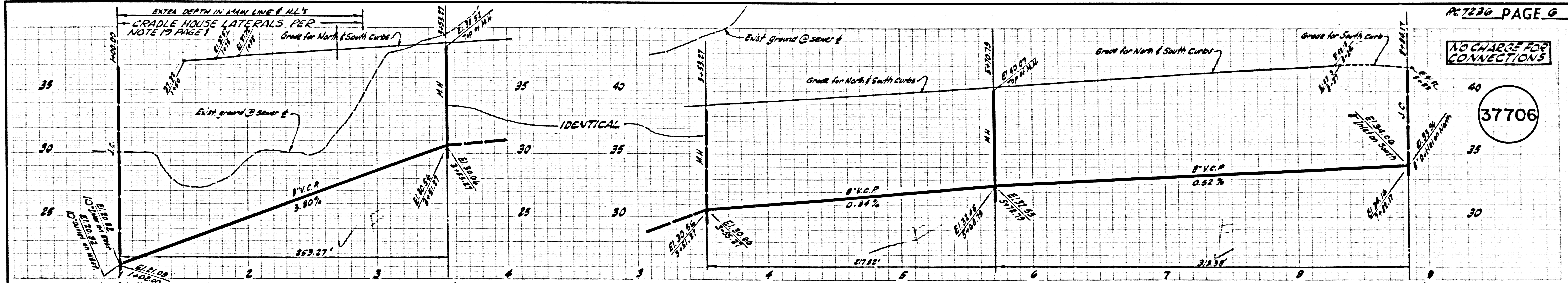
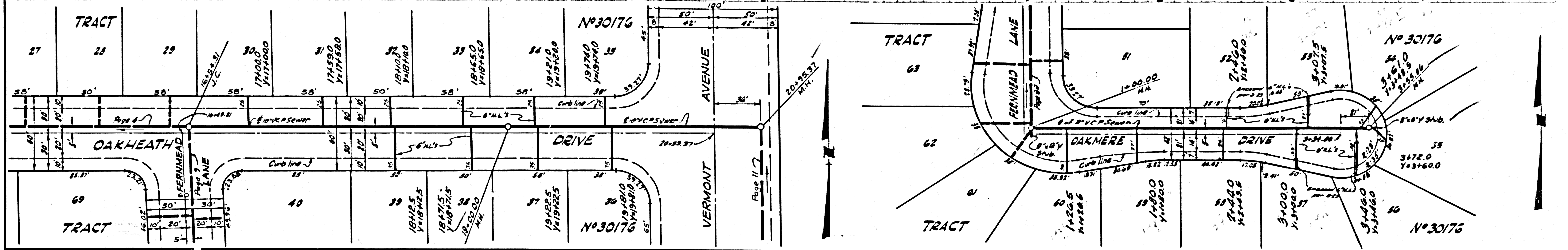
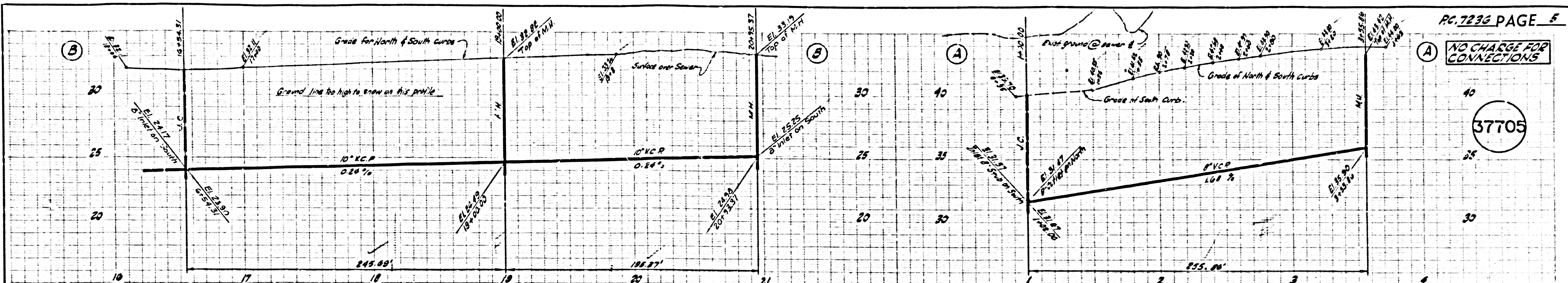
COLLECT CHARGES
 AS INDICATED
William Scott

NO CONNECTIONS FOR THE DISPOSAL OF INDUSTRIAL WASTES SHALL BE MADE TO SEWERS SHOWN ON THESE DRAWINGS WITHOUT WRITTEN PERMISSION FROM THE CHIEF ENGINEER AND GENERAL MANAGER OF THE COUNTY SANITATION DISTRICTS.

COUNTY OF LOS ANGELES, CALIFORNIA
 JOHN A. LAJOLE, COUNTY ENGINEER J. D. PARKHURST, CHIEF ENGINEER
 COO. SAN. DIST. NO. 12
 APPROVED BY: *James L. Pearson* ASSISTANT SANITATION ENGINEER APPROVED BY: *William Scott* OFFICE ENGINEER
 CHECKED BY: *Bernard H. Uebel* REG. C.E. NO. 10653
 J.N. 0364.86

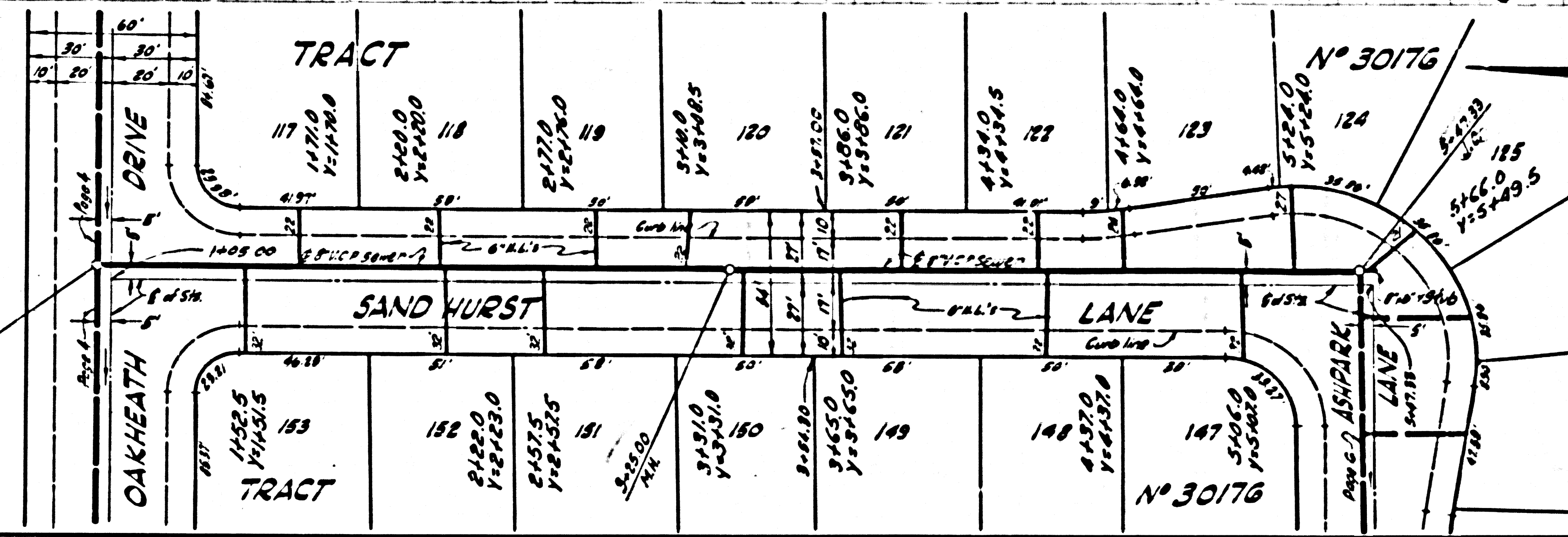
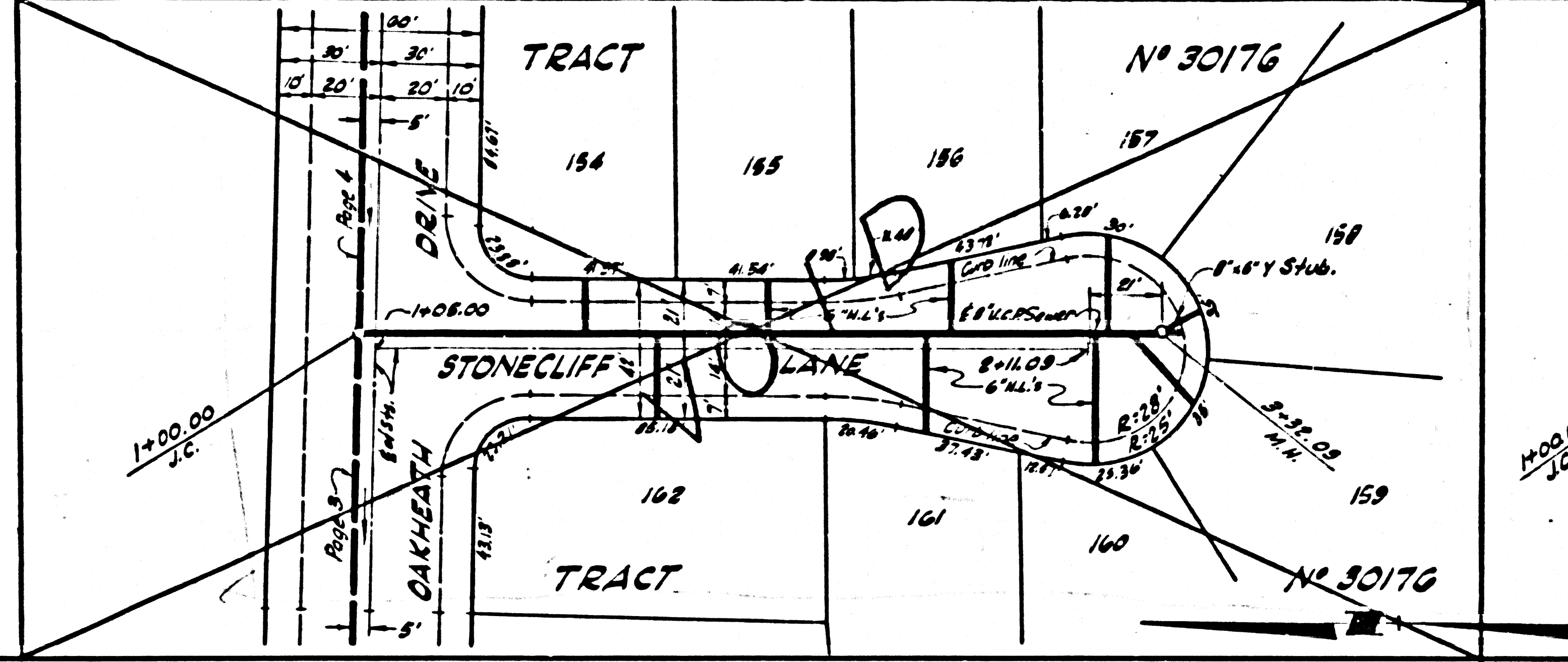
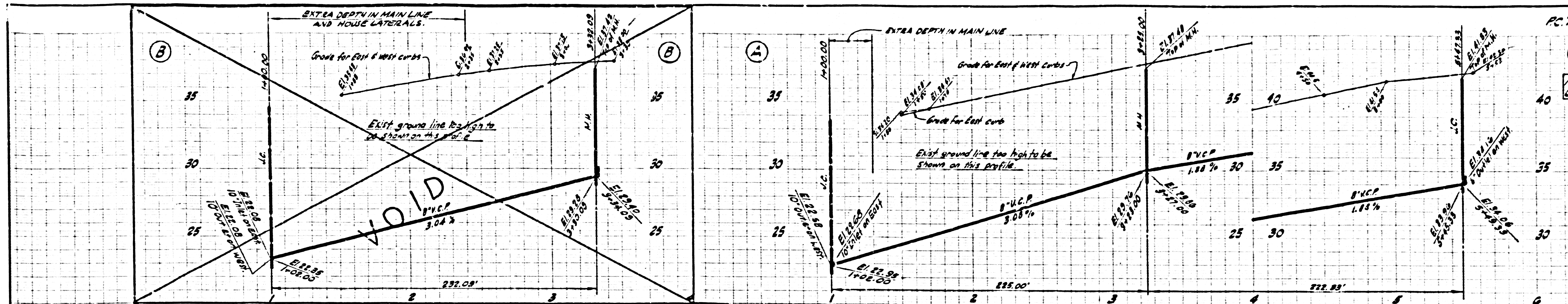






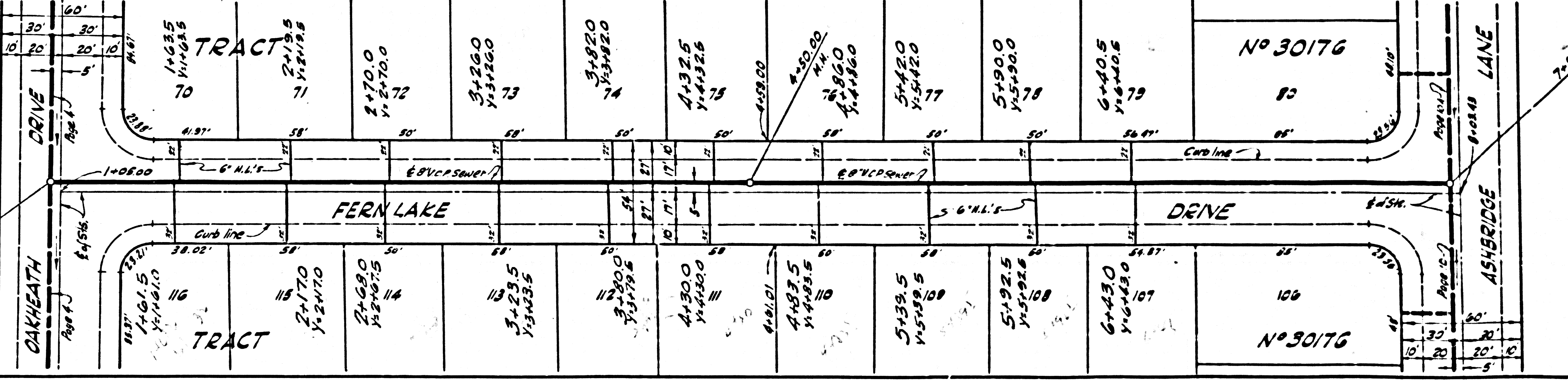
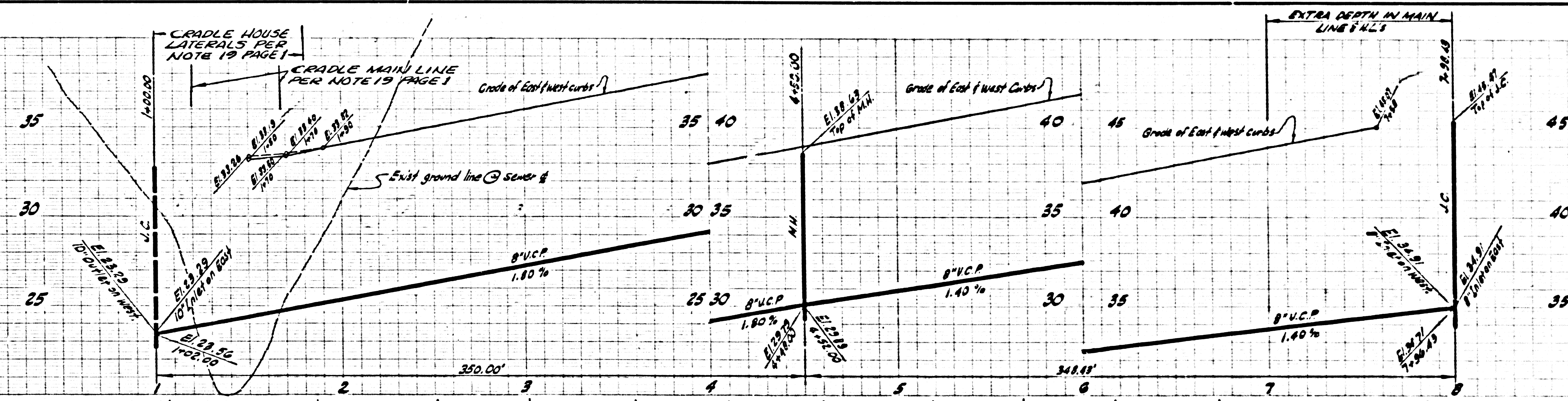
NO CHARGE FOR CONNECTIONS

37707



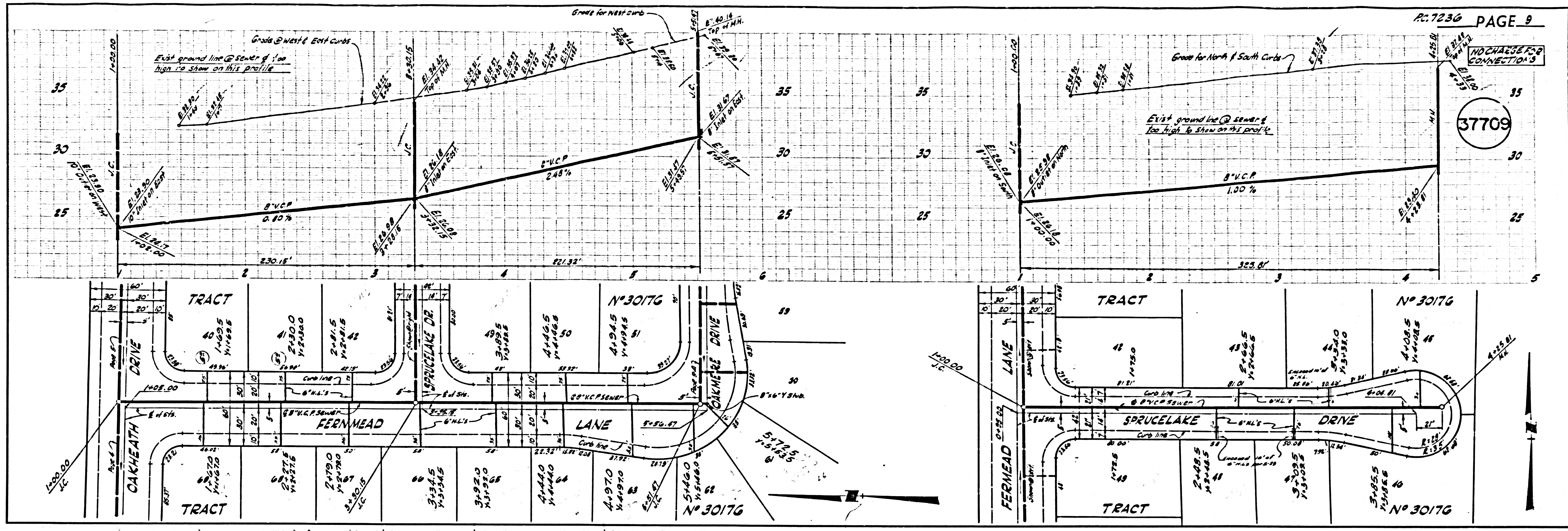
NO CHARGE FOR CONNECTIONS

37708



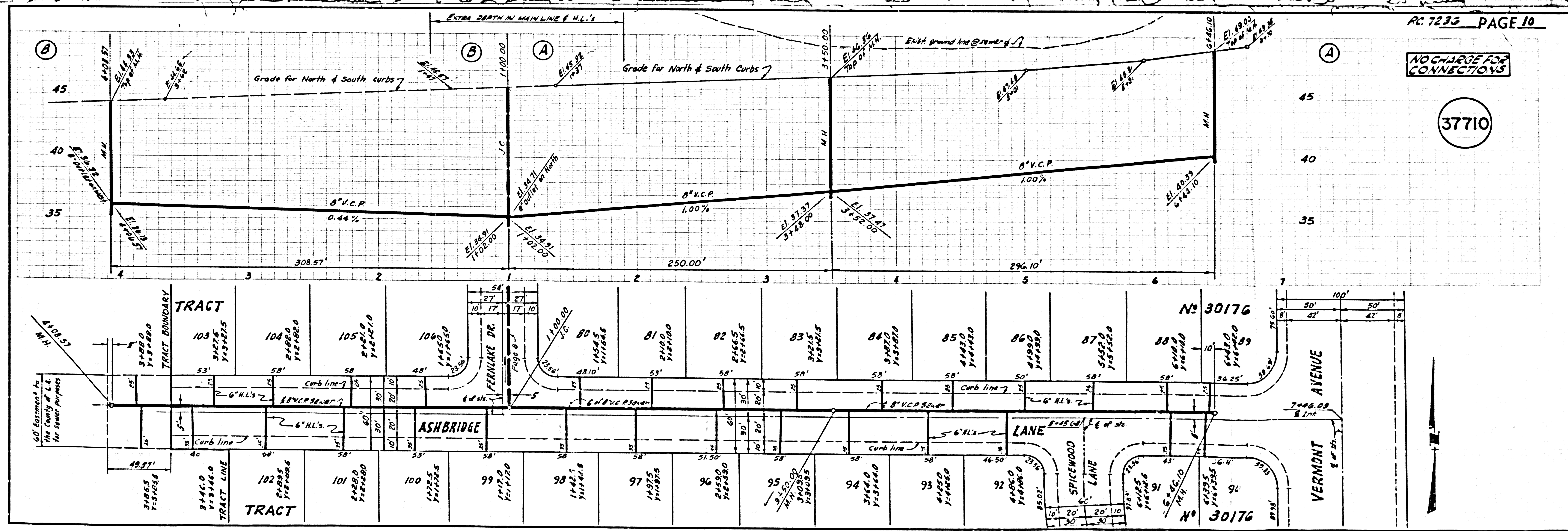
NO CHARGE FOR CONNECTIONS

37709



NO CHARGE FOR CONNECTIONS

37710



NO CHARGE FOR CONNECTIONS

37.711

