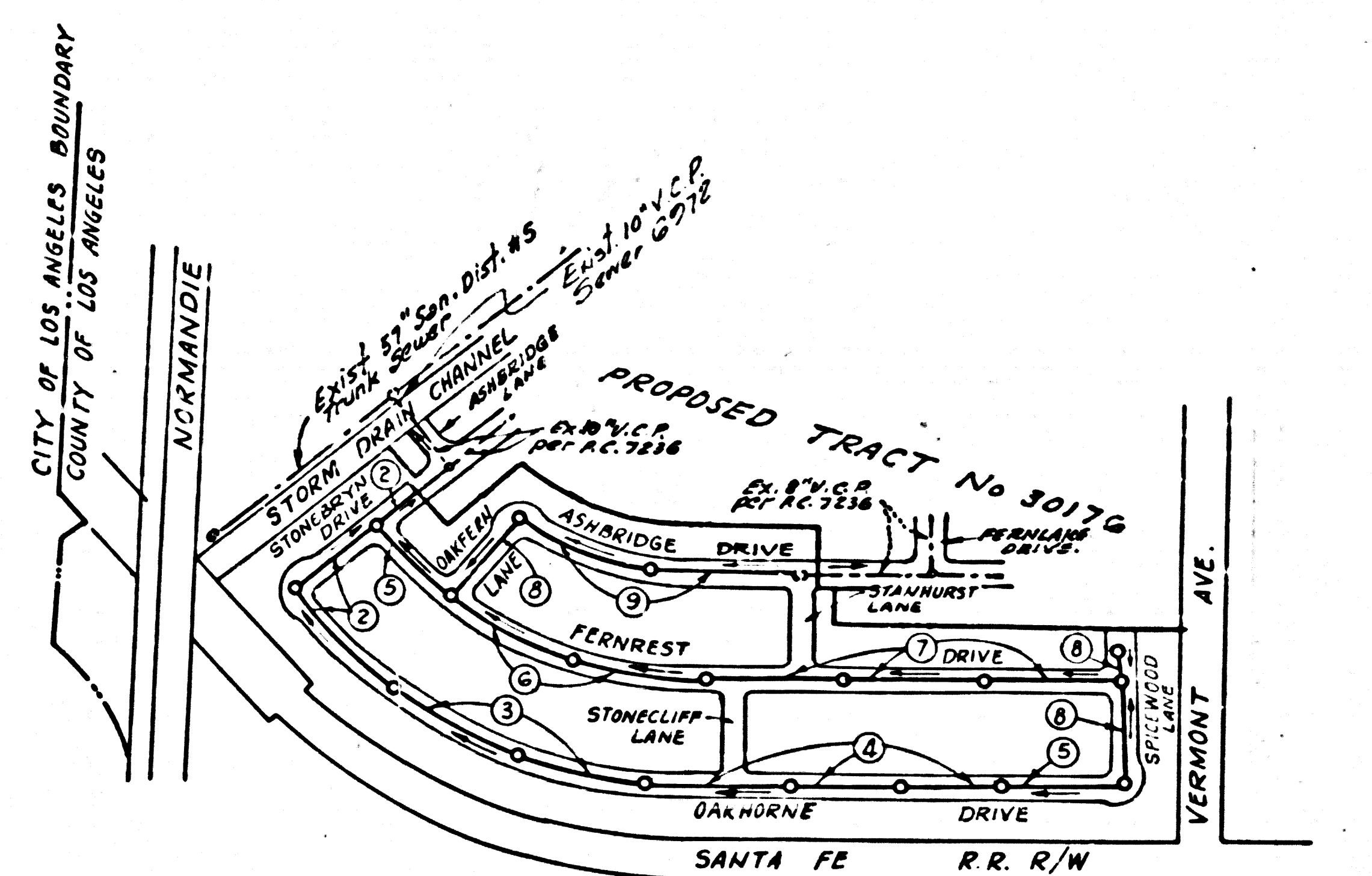


B.M. SY-3071-A ELEV. 33.109
 1/4 Square Head Spike Near
 Center of Curb Return, N.E.
 Corner Lomita Blvd & Vermont Av.
 1' North of L. & T.
 BASE LINE QUAD. 19.55



REVISION JULY 25th 1965
 REVISED ALIGNMENT AND PROFILE OF SEWERS,
 GRADE OF CURBS AND FRONT LOT DIMENSIONS ON:
 OAKHORNE DRIVE, FERNEST DRIVE, STONEBRYN DRIVE,
 ASHBURIDGE DRIVE AND SPICEWOOD LANE

APPROVED BY *James C. Lambie*
 R.C.E. 10653

INDEX MAP
 1" = 400'
 TRACT NO 29184
 P.C. 7237

LOMITA BLDG. DIST. NO. 12

PROFILE ALIGNMENT AND GRADE OF
SANITARY SEWERS PAGE 1
 TO BE CONSTRUCTED IN

TRACT No 29184
PRIVATE CONTRACT NO. 7237

W.S. 28
 5 SHEETS, 9 PAGES
 SCALE: VERT. 1" = 4' HORIZ. 1" = 40'
 JAN. 1965
 PREPARED IN THE OFFICES OF
E.L. PEARSON AND ASSOCIATES
 BY *Thomas C. Clark*
 REG. C. E. NO. 2127

37712

FOR LEGEND SEE PLAN NO. S-1

13. On acceptable certification of compaction test results shall be submitted to the construction division, compaction tests are to be made in accordance with A.S.T.M. Standard Method of Test - D 698 - 62 T.
14. No construction is permitted in filled areas where the relative density of compaction is less than 80%.
15. If the relative density of compaction is less than 90% all main lines and M.L.'s shall be cradled per S-23 or have a special Base Course per S-21, case III. Special M.H. Base per S-14 are required.
16. If the relative density of compaction is 90% or greater then special provisions in (C) are not required.

- NOTES:
1. PROVIDE STAKES ON THE PROPERTY LINE OR PROPERTY LINES PRODUCED AT RIGHT ANGLES TO THE SEWER LINE AT 7' CENTER LINE OF EACH MANHOLE.
 2. NO REPRESENTATIVE OF THE COUNTY ENGINEER WILL SURVEY OR LAY OUT ANY PORTION OF THE WORK.
 3. THE PRIVATE ENGINEER SHALL FURNISH THE COUNTY ENGINEER WITH GRADE SHEETS AND STATIONING FOR ALL HOUSE LATERALS AND Y BRANCHES AND SHALL PROVIDE STAKES FOR THEM AT THESE PLACES LOCATIONS WITH STATIONING PLAINLY MARKED. ALL HOUSE LATERALS SHALL BE CONSTRUCTED IN A STRAIGHT ALIGNMENT AT RIGHT ANGLES FROM THE MAIN LINE SEWER EXCEPT AS SHOWN ON THE PLANS. HOUSE LATERALS FROM CHIMNEYS SHALL NOT HAVE AN ANGLE OF LESS THAN 45° WITH THE MAIN LINE SEWER. ANY CHANGE IN ALIGNMENT SHALL BE INDICATED IN WRITING BY THE PRIVATE ENGINEER.
 4. THE PRIVATE ENGINEER SHALL FURNISH THE HOUSE LATERAL BIRTH AT THE PROPERTY LINE BELOW THE TOP OF CURB ELEVATION FOR EACH HOUSE LATERAL ON THE GRADE SHEET.
 5. NO REVISIONS SHALL BE MADE IN THESE PLANS WITHOUT THE APPROVAL OF THE COUNTY ENGINEER.
 6. THE CONTRACTOR SHALL NOTIFY THE CONSTRUCTION DIVISION BY TELEPHONE, MADISON 9-4747, EXT. 8158, AT LEAST TWENTY-FOUR HOURS BEFORE STARTING ANY WORK UNDER THIS CONTRACT.
 7. MANHOLES SHALL BE BACK SEWER STRUCTURES PER S-5-B. PRECAST CONCRETE MANHOLES PER S-5-B OR S-6 MAY BE USED AS AN ALTERNATE IN LOCATIONS APPROVED BY THE COUNTY ENGINEER.
 8. USE STANDARD MANHOLE FRAMES AND COVERS, S-4, EXCEPT AS NOTED.
 9. MANHOLE TOPS IN UNIMPROVED RIGHTS-OF-WAY TO BE SIX INCHES ABOVE FINISHED GRADE.
 10. USE EXTRA STRENGTH PIPE. ALL PIPE IS STANDARD DEPTH EXCEPT AS NOTED.
 11. USE MECHANICAL COMPRESSION JOINTS FOR ALL V.C.P. JOINTS PER SPEC. SECS. 34, 40 & 49.
 12. All state and local trench safety orders will be rigidly enforced.
 13. IF A POWER POLE IS WITHIN THREE FEET OF THE SEWER, THE SEWER SHALL BE ENCASED, PER S-25, ... TWO FEET ON EITHER SIDE FROM THE POINT OF INTERFERENCE.
 14. IF DURING THE COURSE OF CONSTRUCTION IT IS DETERMINED THAT THERE IS LESS THAN FOUR FEET OF COVER OVER THE TOP OF A MAIN LINE OR HOUSE LATERAL V.C.P. SEWER WHICH IS NOT INDICATED ON THE PLANS, THE PIPE SHALL BE ENCASED PER S-25, CASE III, UNLESS OTHERWISE APPROVED BY THE COUNTY ENGINEER.
 15. HOUSE LATERALS TO BE CONSTRUCTED WITH INVERTS AT PROPERTY LINE ... FEET BELOW CURB GRADE EXCEPT AS NOTED.
 16. MANHOLES AND TRENCHES WITHIN PAVED AREAS TO MEET L.A. COUNTY ROAD DEPT. OR CALIFORNIA STATE HIGHWAY REQUIREMENTS IN ACCORDANCE WITH PERMITS.
 17. FOR ALLOWABLE LEAKAGE TEST USE FORMULA NO. 2, ... SPEC. SEC. 54.
 18. The existence and location of any underground utility pipe, conduits or structures shown on these plans are obtained by a search of the available records to the best of our knowledge there are no existing utility except as shown on these plans. The contractor is required to take due precautionary measures to protect the utility lines shown and any other lines not as shown or not shown on these drawings. The contractor further assumes all liability and responsibility for the utility pipe, conduits, lines or structures shown or not shown on these drawings.

NOTE:
 GRADES TO WHICH THIS IMPROVEMENT IS TO BE CONSTRUCTED ARE SHOWN ON PLANS AND PROFILES. GRADE POINTS FOR TOP OF CURBS, CENTER LINE OF STREETS, OR CENTER LINE OF ALLEYS ARE SHOWN BY CIRCLES ON PROFILES. AT ALL POINTS BETWEEN DESIGNATED POINTS THE GRADE SHALL BE ESTABLISHED SO AS TO CONFORM TO A STRAIGHT LINE DRAWN BETWEEN SAID DESIGNATED POINTS. ELEVATIONS ARE IN FEET 1905 U.S.C. & G.S. SEA LEVEL DATUM OF 1929. THIS DRAWING AND THE DATA HEREON ARE HEREBY MADE A PART OF THE SPECIFICATIONS. WORK SHALL BE CONSTRUCTED ACCORDING TO STANDARD SPECIFICATIONS DATED JULY 23, 1952, ON FILE IN THE OFFICE OF THE COUNTY ENGINEER AND SHALL BE PROTECTED ONLY IN THE PRESENCE OF THE COUNTY ENGINEER. BEFORE WORK CAN BE STARTED, THE CONTRACTOR MUST OBTAIN A PERMIT TO EXCAVATE IN COUNTY STREETS FROM THE L.A. COUNTY ROAD DEPT., DISTRICT OFFICE NO. 5, ... AND PAY A FEE TO THE COUNTY ENGINEER, ROOM 302, COUNTY ENGINEER'S BUILDING, 100 WEST SECOND STREET OR PALMS VERDES-CENTINELA VALLEY REGIONAL OFFICE, SUFFICIENT TO COVER THE COST OF CONSTRUCTION INSPECTION AND SECOND PLANS. APPROVAL OF THIS PLAN BY THE COUNTY OF LOS ANGELES DOES NOT CONSTITUTE A REPRESENTATION AS TO THE ACCURACY OF THE LOCATION OF OR THE EXISTENCE OR NON-EXISTENCE OF ANY UNDERGROUND UTILITY PIPE, OR STRUCTURE WITHIN THE LIMITS OF THIS PROJECT. THIS NOTE APPLIES TO ALL PAGES. IF WORK IS TO BE DONE IN A STATE HIGHWAY, A PERMIT MUST BE OBTAINED FROM THE STATE OF CALIFORNIA, DIVISION OF HIGHWAYS, 126 NORTH BRIDGE STREET, LOS ANGELES, CALIFORNIA.

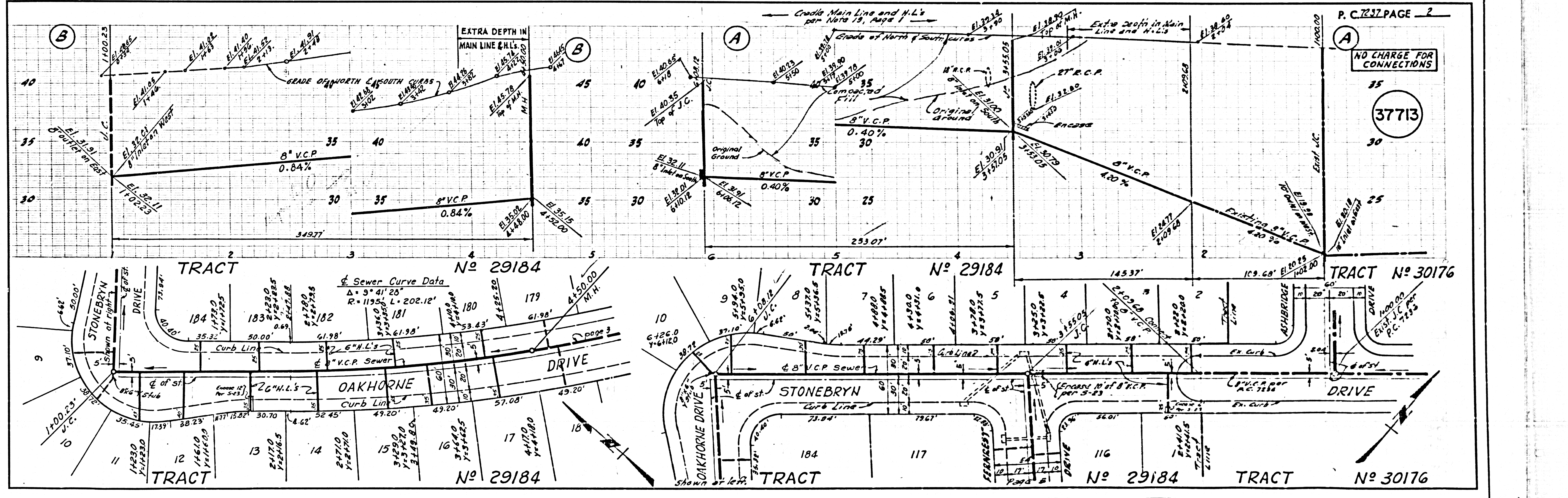
COUNTY OF LOS ANGELES, CALIFORNIA
 JOHN A. LAMBIE, COUNTY ENGINEER J. D. PARKHURST, CHIEF ENGINEER
 CO. SAN. DIST. NO. 12
 APPROVED BY *James C. Lambie* APPROVED BY *J. D. Parkhurst*
 ASSISTANT SANITATION ENGINEER OFFICE ENGINEER

COLLECT CHARGES
 AS INDICATED
L. Curtis 4-22-65

NO CONNECTIONS FOR THE DISPOSAL OF INDUSTRIAL WASTES SHALL BE MADE TO SEWERS SHOWN ON THESE DRAWINGS WITHOUT WRITTEN PERMISSION FROM THE CHIEF ENGINEER AND GENERAL MANAGER OF THE COUNTY SANITATION DISTRICTS.

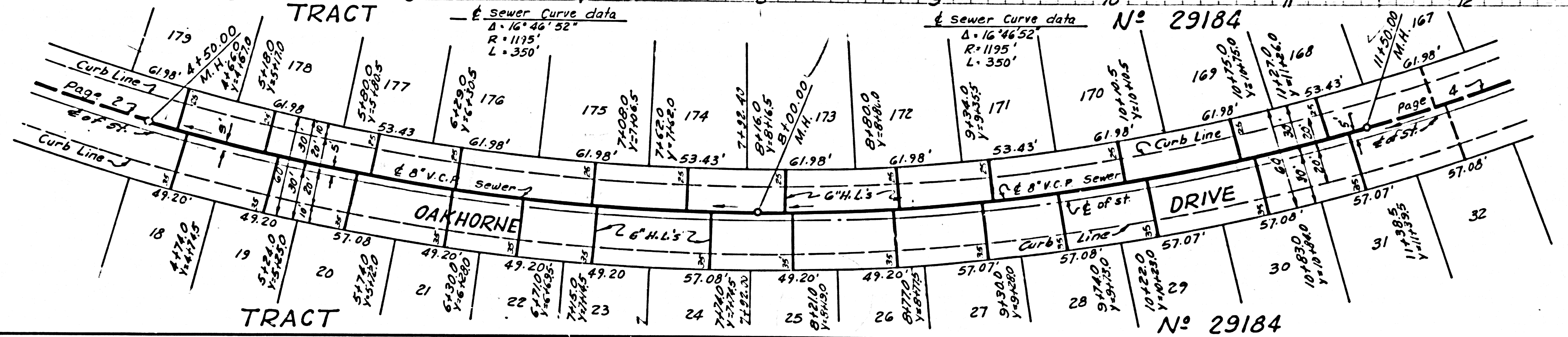
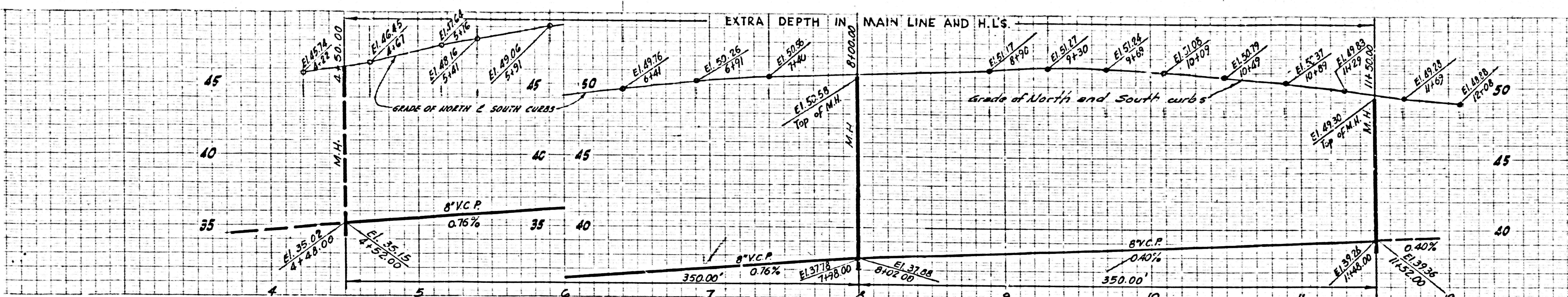
CHECKED BY *James C. Lambie*
 REG. C.E. NO. 10653

J.N. 0364.87



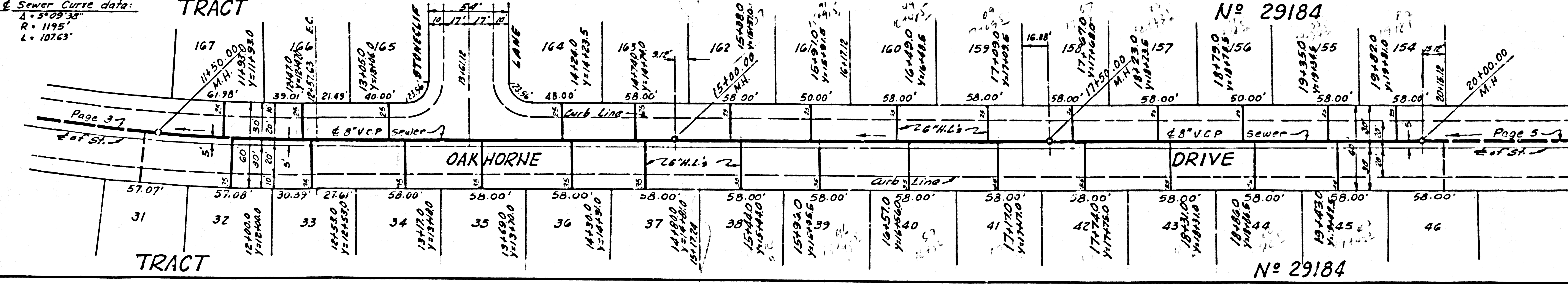
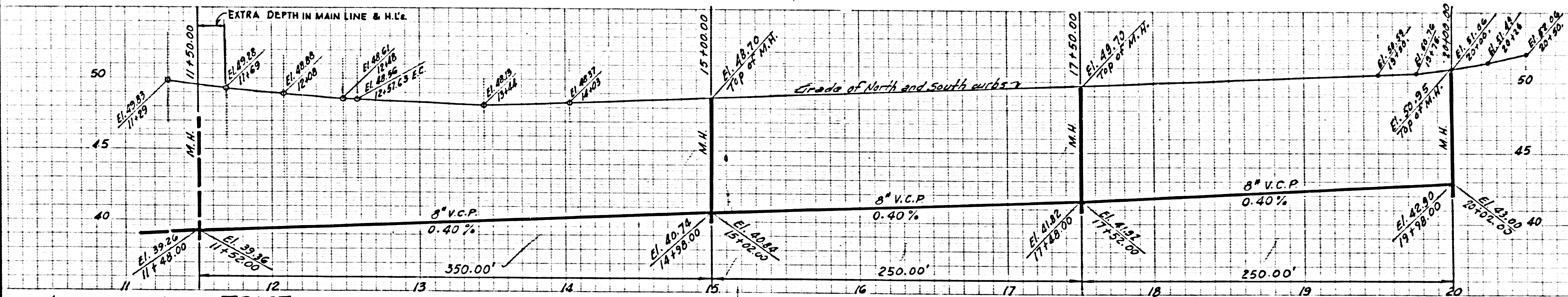
NO CHARGE FOR CONNECTIONS

37714



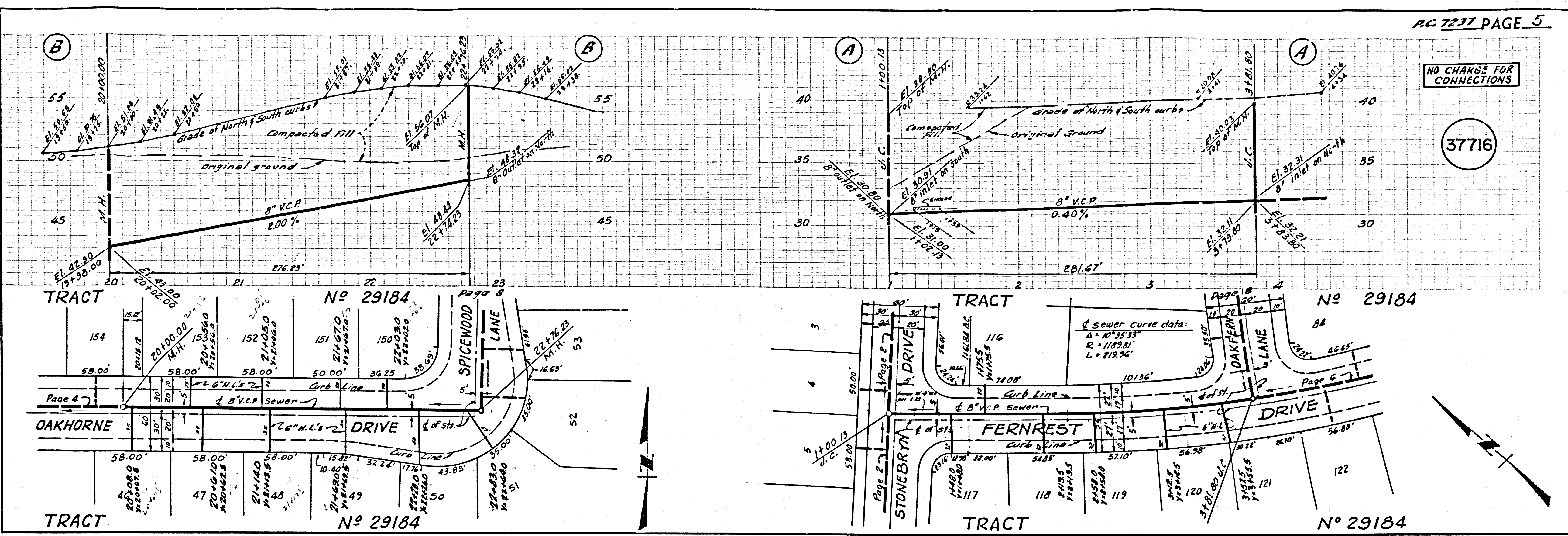
NO CHARGE FOR CONNECTIONS

37715



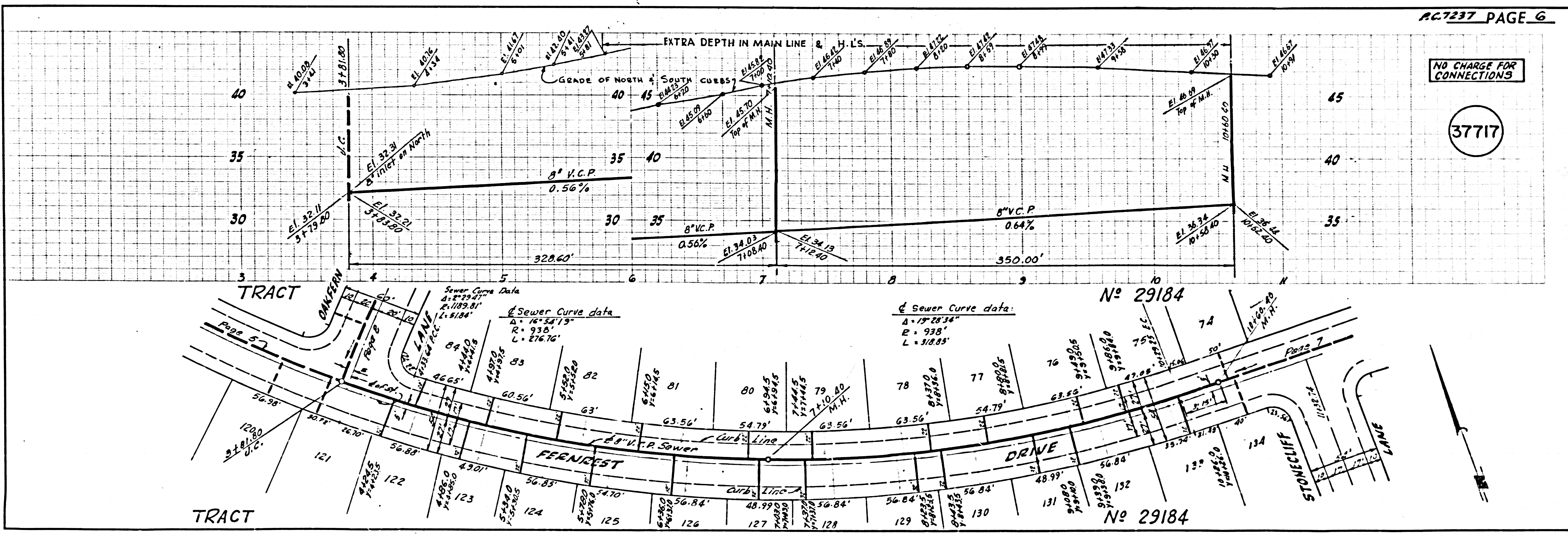
NO CHARGE FOR CONNECTIONS

37716



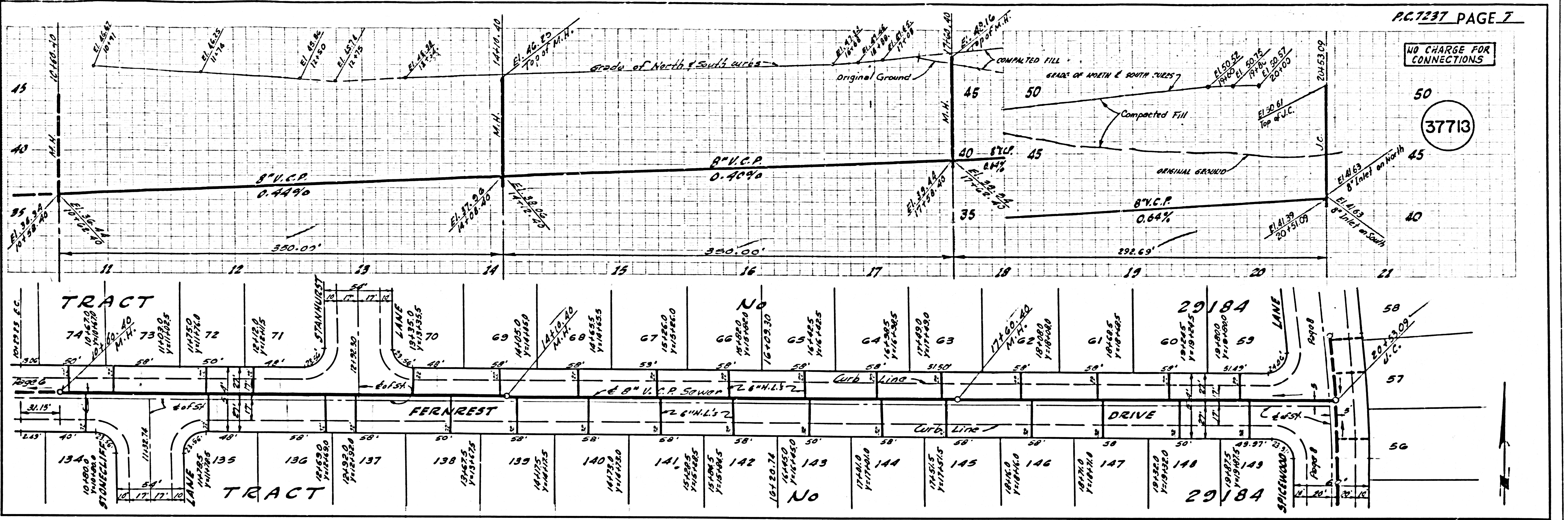
NO CHARGE FOR CONNECTIONS

37717



NO CHARGE FOR CONNECTIONS

37713



NO CHARGE FOR CONNECTIONS

37719

