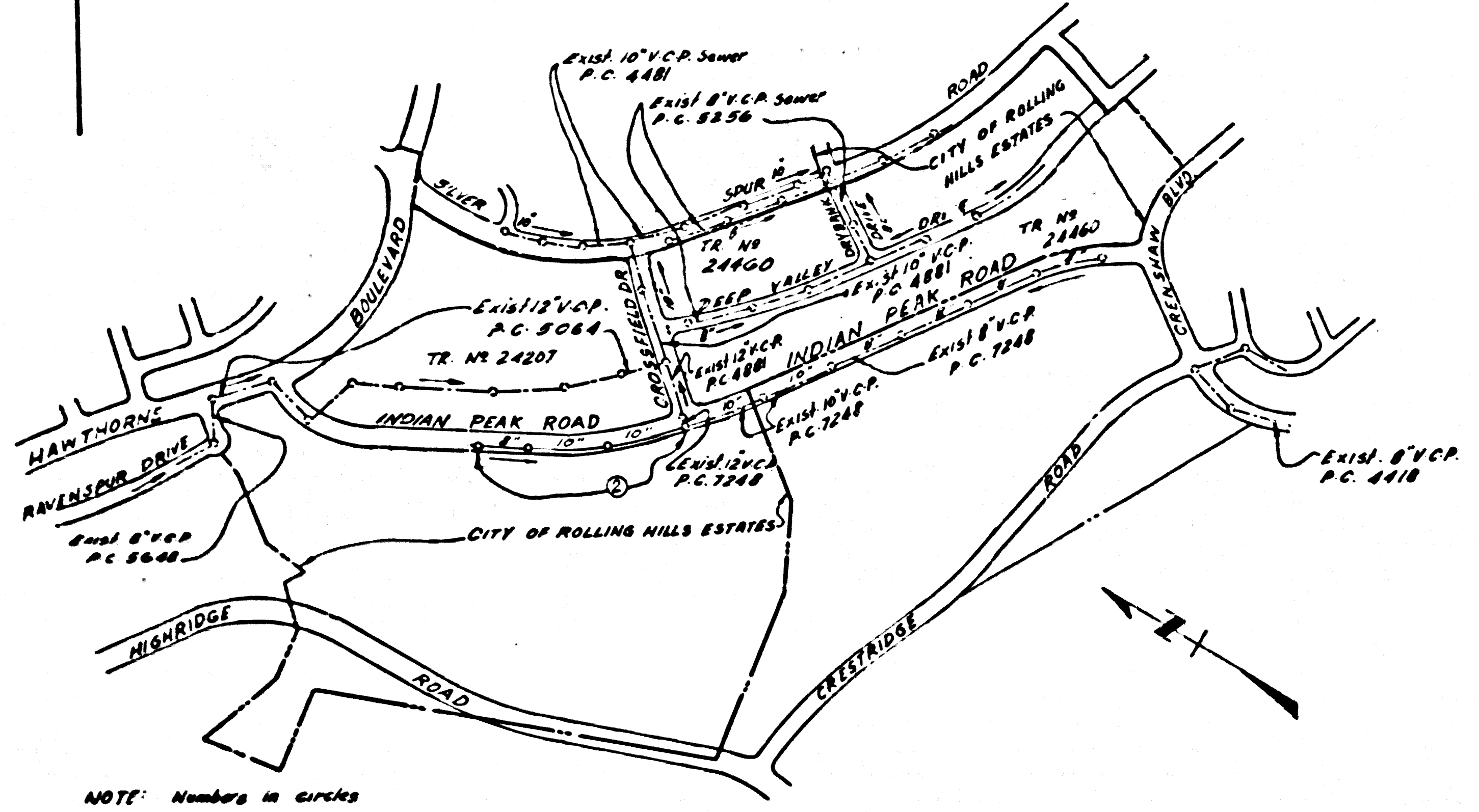


B.M. JY 4370 A. ELEV. 395.618  
 R.D.M. Top in E. Ch. INDIAN PEAK ROAD  
 10' ± S. Ch. Rel. @ S.E. Cor. HAWTHORNE  
 BLVD. 30' ± E. + 116' ± S. C/L 1st.  
 PALOS VERDES QUAD. 19.60



INDEX MAP  
 INDIAN PEAK ROAD No. 2  
 P.C. 7255  
 SCALE 1" = 600'

(DOUBLE SCALE)  
 ROLLING HILLS-ESTATES BLDG. DIST. NO. 12.03

PROFILE ALIGNMENT AND GRADE OF  
 SANITARY SEWERS PAGE 1  
 TO BE CONSTRUCTED IN  
 INDIAN PEAK ROAD No. 2 37563

PRIVATE CONTRACT NO. 7255

W.S. 27  
 1 SHEET, 2 PAGES  
 SCALE: VERT. 1" = 8' HORIZ. 1" = 40'  
 PREPARED IN THE OFFICES OF  
 Development Consultants, Inc.  
 1911 S. GARDEN BLVD., PASADENA, CALIF. 91107  
 By: J. D. Parkhurst  
 REG. C.E. NO. 3513  
 FOR LEGEND SEE PLAN NO. 5-1

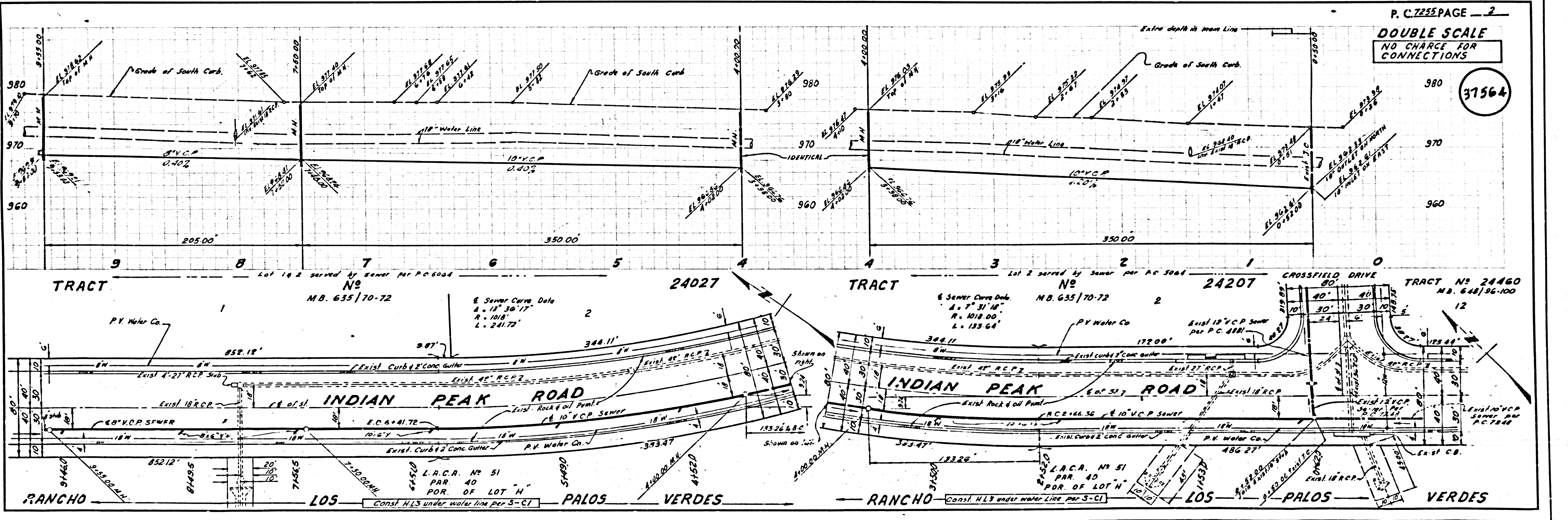
- NOTES:
1. PROPERTY STAKES IN THE PROPERTY LINE OR PROPERTY LINES PROVIDED, AT RIGHT ANGLES TO THE SEWER LINE AT THE CENTER LINE OF EACH MANHOLE.
  2. NO REPRESENTATIVE OF THE CITY ENGINEER WILL SURVEY OR LAY OUT ANY PORTION OF THE WORK.
  3. THE PRIVATE ENGINEER SHALL FURNISH THE CITY ENGINEER WITH GRAD SHEETS AND STATIONING FOR ALL HOUSE LATERALS AND T-Y BRANCHES AND SHALL PROVIDE STAKES FOR THE SAME AT THESE PROPER LOCATIONS WITH STATIONING PLAINLY MARKED. ALL HOUSE LATERALS SHALL BE CONSTRUCTED IN A STRAIGHT ALIGNMENT AT RIGHT ANGLES FROM THE MAIN LINE SEWERS EXCEPT AS SHOWN ON THE PLANS. HOUSE LATERALS FROM CHIMNEYS SHALL NOT HAVE AN ANGLE OF LESS THAN 45° WITH THE MAIN LINE SEWER. ANY CHANGE IN ALIGNMENT SHALL BE REQUESTED BY WRITING BY THE PRIVATE ENGINEER.
  4. THE PRIVATE ENGINEER SHALL FURNISH THE HOUSE LATERAL DEPTH AT THE PROPERTY LINE BELOW THE TOP OF CURB REVISION FOR EACH HOUSE LATERAL ON T-Y GRADE SEWER.
  5. NO REVISIONS SHALL BE MADE IN THESE PLANS WITHOUT THE APPROVAL OF THE CITY ENGINEER.
  6. THE CONTRACTOR SHALL NOTIFY THE CONSTRUCTION DIVISION BY TELEPHONE, MARCH 9-10, EST. 8:30, AT LEAST TWENTY-FOUR HOURS BEFORE STARTING ANY WORK UNDER THE CONTRACT.
  7. MANHOLES SHALL BE BRICK SEWER STRUCTURES PER C. S. PRECAST CONCRETE MANHOLES PER S-8, OR S-8, MAY BE USED AS AN ALTERNATE IN LOCATIONS APPROVED BY THE CITY ENGINEER.
  8. USE STANDARD MANN-JE FRAMES AND COVERS, S-28
  9. MANHOLE TOPS IN UNIMPROVED RIGHTS-OF-WAY TO BE SIX INCHES ABOVE FINISHED GRADE.
  10. USE EXTRA STRENGTH PIPE. ALL PIPE IS STANDARD DEPTH EXCEPT AS NOTED.
  11. USE STANDARD MECHANICAL COMPRESSION JOINTS FOR ALL V.C.P. JOINTS PER SPEC., SECS. 24 & 47
  12. WHERE SEWER ENDS UNDER EXISTING DRIVEWAYS OR DRIVEWAYS, THE V.C.P. SHALL BE ENDED BY 18" OF JOINT UNDERGROUND PER SPEC., SECS. 20 & 46, OR MECHANICAL COMPRESSION JOINTS PER SPEC., SECS. 20 & 46.
  13. IF A POWER POLE IS WITHIN THREE FEET OF THE SEWER, THE SEWER SHALL BE ENCASED, PER S-25, TWO FEET ON EITHER SIDE FROM THE POINT OF INTERFERENCE.
  14. IF DURING THE COURSE OF CONSTRUCTION IT IS DETERMINED THAT THERE IS LESS THAN FOUR FEET OF COVER OVER THE TOP OF A MAIN LINE OR HOUSE LATERAL V.C.P. SEWER WHICH IS NOT INDICATED ON THE PLANS, THE PIPE SHALL BE ENCASED PER S-25, UNLESS OTHERWISE APPROVED BY THE CITY ENGINEER.
  15. HOUSE LATERALS TO BE CONSTRUCTED WITH INVERTS AT PROPERTY LINE... PER FEET BELOW CURB GRADE EXCEPT AS NOTED.
  16. SURFACE ALL TRENCHES WITHIN PAVED AREAS TO MEET CITY ROAD DEPT. OR CALIFORNIA STATE HIGHWAY REQUIREMENTS IN ACCORDANCE WITH PERMITS.
  17. FOR ALLOWABLE LEAKAGE TEST USE FORMULA NO. 2, SPEC., SEC. 54
  18. ALL STATE AND LOCAL TRENCH SAFETY ORDERS WILL BE RIGIDLY ENFORCED.

NO CONNECTIONS FOR THE DISPOSAL OF INDUSTRIAL WASTES SHALL BE MADE TO SEWERS SHOWN ON THESE DRAWINGS WITHOUT WRITTEN PERMISSION FROM THE CHIEF ENGINEER AND GENERAL MANAGER OF THE COUNTY SANITATION DISTRICTS.

COLLECT CHARGES AS INDICATED  
*Archie S. Cook*

GRADES TO WHICH THIS IMPROVEMENT IS TO BE CONSTRUCTED ARE SHOWN ON PLANS AND PROFILE. GRADE POINTS FOR TOP OF CURB, CENTER LINE OF STREET, OR CENTER LINE OF ALLEYS ARE SHOWN BY CIRCLES ON PROFILES AT ALL POINTS BETWEEN DESIGNATED POINTS THE GRADE SHALL BE ESTABLISHED SO AS TO CONFORM TO A STRAIGHT LINE BETWEEN SAID DESIGNATED POINTS. ELEVATIONS ARE IN FEET ABOVE U.S.C. & G.S. MEAN LEVEL DATUM OF 1929. THE DRAWING AND THE DATA HEREON ARE HEREBY MADE A PART OF THE SPECIFICATIONS. WORK SHALL BE CONSTRUCTED ACCORDING TO STANDARD SPECIFICATIONS DATED MAY 23, 1962, ON FILE IN THE OFFICE OF THE CITY ENGINEER AND SHALL BE PROSECUTED ONLY IN THE PRESENCE OF THE CITY ENGINEER. BEFORE WORK CAN BE STARTED, THE CONTRACTOR MUST OBTAIN A PERMIT TO EXCAVATE IN CITY STREETS FROM THE L.A. COUNTY ROAD DEPT., DISTRICT OFFICE NO. 3, AND PAY A FEE TO THE CITY ENGINEER. L.A. COUNTY ROLLING HILLS PALOS VERDES CITY OF ROLLING HILLS-ESTATES PALOS VERDES, CALIFORNIA SANITATION DISTRICT. APPROVAL OF THIS PLAN BY THE CITY ENGINEER DOES NOT CONSTITUTE A REPRESENTATION AS TO THE ACCURACY OF THE LOCATION OF OR THE EXISTENCE OR NON-EXISTENCE OF ANY UNDERGROUND UTILITY PIPE, OR STRUCTURE WITHIN THE LIMITS OF THE PROJECT. THIS NOTE APPLIES TO ALL PAGES. IF WORK IS TO BE DONE IN A STATE HIGHWAY A PERMIT MUST BE OBTAINED FROM THE STATE OF CALIFORNIA, DIVISION OF HIGHWAYS, 126 SOUTH SPRING STREET, LOS ANGELES, CALIFORNIA.

CITY OF ROLLING HILLS-ESTATES, CALIFORNIA  
 JOHN A. LAMBIE, CITY ENGINEER J. D. PARKHURST, CHIEF ENGINEER  
 APPROVED BY: *R. E. K.* APPROVED BY: *J. D. Parkhurst*  
 ASSISTANT SANITATION ENGINEER OFFICE ENGINEER  
 SUBMITTED BY: *J. D. Parkhurst*  
 REGIONAL ENGINEER  
 CHECKED BY: *J. D. Parkhurst*  
 REG. C.E. NO. 12200



P.C. 7255 PAGE 2  
 DOUBLE SCALE  
 NO CHARGE FOR CONNECTIONS  
 37564