

B.M. S.L. 942 ELEV. 1423.039  
 U.S. & S. MON. STATIONED E 486-1955 IN N2LY  
 END OF N2LY ADJUT. SARE'S OLD CULVERT  
 4.84 L.S. UNDE. S. S. 25553 W. BY BLDG. 8  
 0.6 MI. W. OF SOLEDAD CH. RD. S. 1/4  
 OF N2LY ADJUT. SARE'S OLD CULVERT ANY  
 NEWHALL QUAD. 1958

20 ON GRADES OF 30% OR MORE. CONSTRUCT ANCHOR BLOCKS  
 PER S-24.

DOUBLE SCALE  
 NEWHALL BLDG. DIST. NO. 82

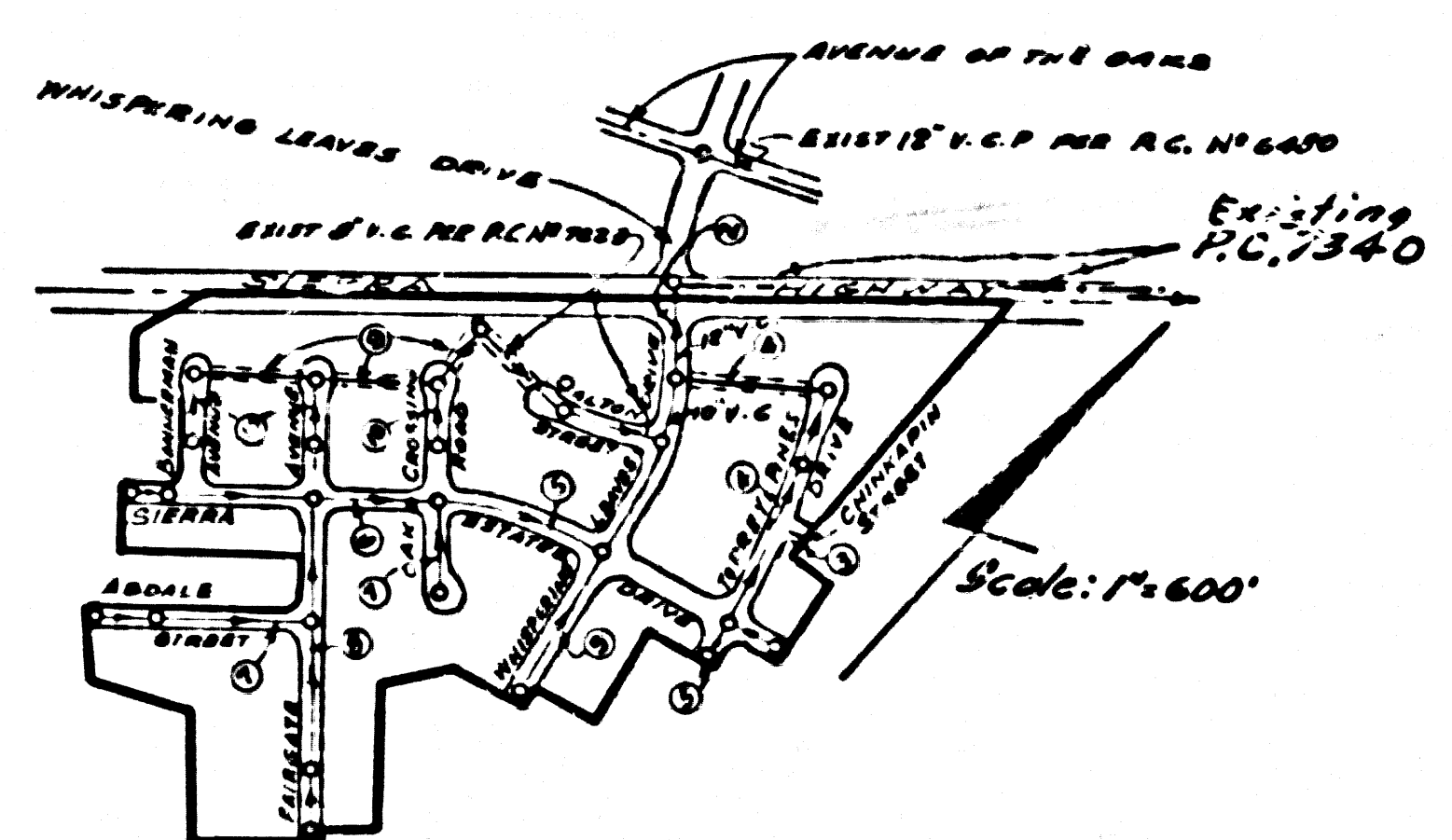
PROFILE ALIGNMENT AND GRADE OF P.C. 7260  
 SANITARY SEWERS PAGE 1  
 TO BE CONSTRUCTED IN  
 TRACT No 30201

PRIVATE CONTRACT NO. 7260

W.S. 62  
 5 SHEETS, 10 PAGES

SCALE: VERT. 1" = 4' HORIZ. 1" = 20'  
 PREPARED BY THE OFFICES OF  
 PRECISION INCORPORATED  
 BY: J. E. Carlisle  
 REG. C. E. NO. 8668

37283



NOTES:  
 Number in circle indicates page No.

INDEX MAP  
 TRACT No. 30201  
 P.C. 7260

Revision No. 2  
 slope of 8" sewer on page 9 changed  
 from 0.92% and 19.00% to 0.40%  
 from Bannerman Avenue to south-  
 westerly boundary of tract.  
 Approved: J. E. Carlisle Date 5-11-65  
 OFFICE OF COUNTY ENGINEER

Revision No. 1  
 sewer moved 2 feet easterly on Page 9 from Oak Crossing Road  
 to the intersection with P.C. 7223 M.H. at intersection moved  
 3 ft easterly from original location, Sanitary Sewer Easement and  
 Storm Drain Easement dimensioned per Recorded Tract Map  
 Approved: J. E. Carlisle Date 3-24-61  
 OFFICE OF COUNTY ENGINEER

Any connection to the sewer system of County  
 Sanitation District, provided directly or  
 indirectly by the sewers shown on these plans,  
 shall be considered a temporary connection  
 until all area sewered is annexed to said  
 district, at which time the connection shall  
 become permanent. If for any reason the  
 annexation to the district of any area sewered  
 hereunder is not completed, the property not  
 in the district will be required to disconnect  
 unless a contract is entered into with the  
 district providing for the disposal of sewage  
 from the area.

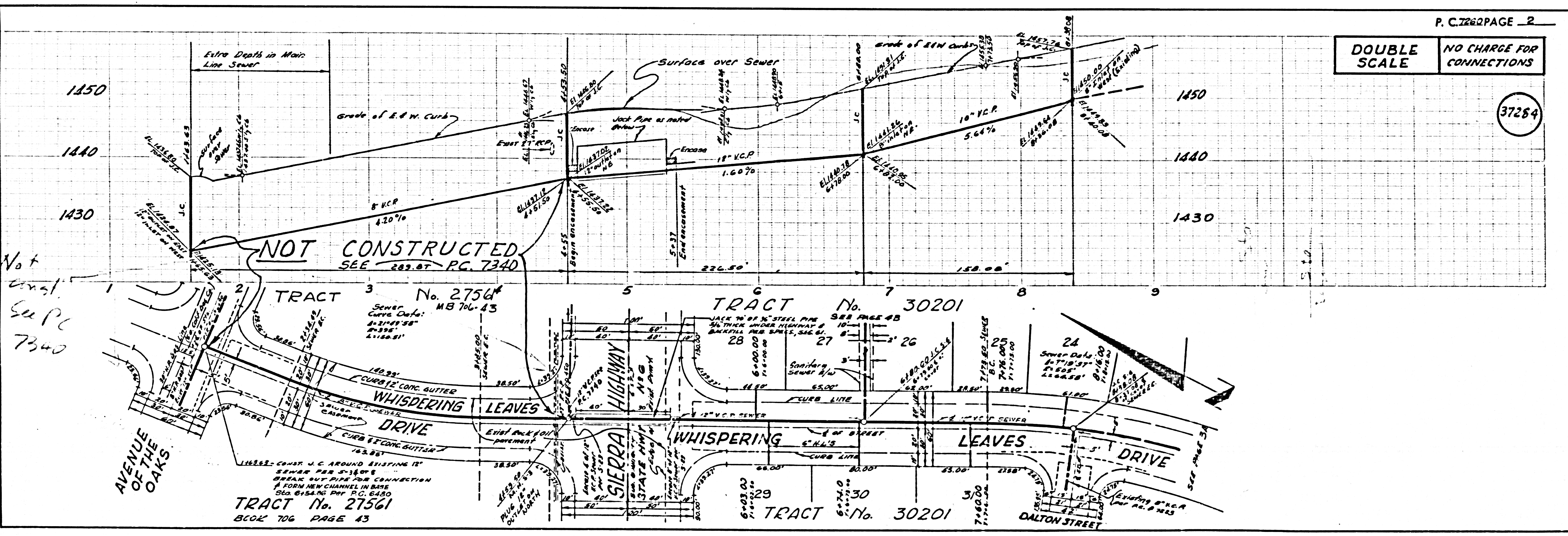
NO CONNECTIONS FOR THE DISPOSAL OF  
 INDUSTRIAL WASTES SHALL BE MADE TO  
 SEWERS SHOWN ON THESE DRAWINGS  
 WITHOUT WRITTEN PERMISSION FROM THE  
 CHIEF ENGINEER AND GENERAL MANAGER  
 OF THE COUNTY SANITATION DISTRICTS.

- NOTE:
1. PROVIDE STAKES ON THE PROPERTY LINE OR PROPERTY LINES PRODUCED AT RIGHT ANGLES TO THE SEWER LINE AT THE CENTER LINE OF EACH MANHOLE.
  2. NO REPRESENTATIVE OF THE COUNTY ENGINEER WILL SURVEY OR LAY OUT ANY PORTION OF THE WORK.
  3. THE PRIVATE ENGINEER SHALL FURNISH THE COUNTY ENGINEER WITH GRADE SHEETS AND STATIONINGS FOR ALL HOUSE LATERALS AND Y BRANCHES AND SHALL PROVIDE STAKES FOR THEM AT THEIR PROPER LOCATIONS WITH STATIONING PLAINLY MARKED. ALL HOUSE LATERALS SHALL BE CONSTRUCTED IN A STRAIGHT ALIGNMENT AT RIGHT ANGLES FROM THE MAIN LINE SEWER EXCEPT AS SHOWN ON THE PLANS. HOUSE LATERALS SHALL BE CONSTRUCTED IN A STRAIGHT ALIGNMENT UNLESS OTHERWISE SPECIFIED ON THE PLANS.
  4. THE PRIVATE ENGINEER SHALL FURNISH THE HOUSE LATERAL DEPTH AT THE PROPERTY LINE BELOW THE TOP OF CURB ELEVATION FOR EACH HOUSE LATERAL ON THE GRADE SHEET.
  5. NO REVISIONS SHALL BE MADE IN THESE PLANS WITHOUT THE APPROVAL OF THE COUNTY ENGINEER.
  6. THE CONTRACTOR SHALL NOTIFY THE CONSTRUCTION DIVISION BY TELEPHONE, HARBOR 9-4747, EXT. 8158, AT LEAST TWENTY-FOUR HOURS BEFORE STARTING ANY WORK UNDER THIS CONTRACT.
  7. MANHOLES SHALL BE BRICK SEWER STRUCTURES PER S-3, PRECAST CONCRETE MANHOLES PER SCHEDULES S-6, UNLESS OTHERWISE SPECIFIED ON THE PLANS.
  8. USE STANDARD MANHOLE FRAMES AND COVERS, S-12, EXCEPT AS NOTED.
  9. MANHOLE TOPS IN UNIMPROVED AREAS SHALL BE SIX INCHES ABOVE FINISHED GRADE.
  10. USE EXTRA STRENGTH PIPE, ALL PIPE IS STANDARD UNLESS NOTED OTHERWISE.
  11. USE UNREINFORCED MECHANICAL COMPRESSION JOINTS FOR ALL V.C.P. JOINTS PER SPEC., SPEC. 34 & 4. 1-19 UNLESS OTHERWISE SPECIFIED ON THE PLANS.
  12. IF A POWER POLE IS WITHIN THREE FEET OF THE SEWER, THE SEWER SHALL BE ENCASED, PER S-25, TWO FEET ON EITHER SIDE FROM THE POINT OF INTERFERENCE.
  13. IF DURING THE COURSE OF CONSTRUCTION IT IS DETERMINED THAT THERE IS LESS THAN FOUR FEET OF COVER OVER THE TOP OF A MAIN LINE OR HOUSE LATERAL V.C.P. SEWER WHICH IS NOT INDICATED ON THE PLANS, THE PIPE SHALL BE ENCASED PER S-25, UNLESS OTHERWISE APPROVED BY THE COUNTY ENGINEER.
  14. HOUSE LATERALS TO BE CONSTRUCTED WITH INVERTS AT PROPERTY LINE. ... FEET BELOW CURB GRADE EXCEPT AS NOTED.
  15. IMPACT ALL TRINCHES WITHIN PAVED AREAS TO MEET L.A. COUNTY ROAD DEPT. OR CALIFORNIA STATE HIGHWAY REQUIREMENTS BY ACCORDANCE WITH PERMITS.
  16. FOR ALLOWABLE LEAKAGE TEST USE FORMULA NO. ... SPEC., SEC. 54.
  17. A- NO CONSTRUCTION WILL BE PERMITTED IN FILLED AREAS UNLESS ACCEPTABLE CERTIFICATION IS SUBMITTED TO THE CONSTRUCTION DIVISION OF THE COUNTY ENGINEER'S DEPT. THAT RELATIVE COMPACTION IS GREATER THAN 80%  
 B- IF COMPACTION IS LESS THAN 80% THE SEWER MUST BE ENCASED AS SHOWN ON THE PLANS PER S-25  
 C- IF COMPACTION IS GREATER THAN 80% ENCASEMENT IS NOT REQUIRED
  18. UPON ACCEPTABLE CERTIFICATION TO THE CONSTRUCTION DIVISION OF THE COUNTY ENGINEER THAT RELATIVE COMPACTION IS GREATER THAN 80%, BRICK PER S-12 WILL NOT BE REQUIRED.
  19. ALL STATE AND LOCAL TRENCH SAFETY ORDERS WILL BE RIGIDLY ENFORCED.

COLLECT CHARGES  
 AS INDICATED  
 Carter 2-28-65 3-7-65

NOTICE TO CONTRACTORS  
 The existence and location of any underground utility pipes or structures shown on these plans are obtained by or verified by the available records. To the best of my knowledge there are no existing utilities except as shown on these plans. The Contractor is required to take due precautionary measures to protect the utility lines not of record or not shown on these plans.  
 J. E. Carlisle  
 CIVIL ENGR. NO. 2418

COUNTY OF LOS ANGELES, CALIFORNIA  
 JOHN A. LAMBIE, COUNTY ENGINEER J. D. PARKHURST, CHIEF ENGINEER  
 CO. SAN. DIST. NO. 126  
 APPROVED BY: J. E. Carlisle ASSISTANT SANITATION ENGINEER APPROVED BY: J. D. Parkhurst OFFICE ENGINEER  
 SUBMITTED BY: J. E. Carlisle SPECIAL ENGINEER  
 CHECKED BY: J. E. Carlisle REG. C.E. NO. 7466  
 J.N. 0364.99

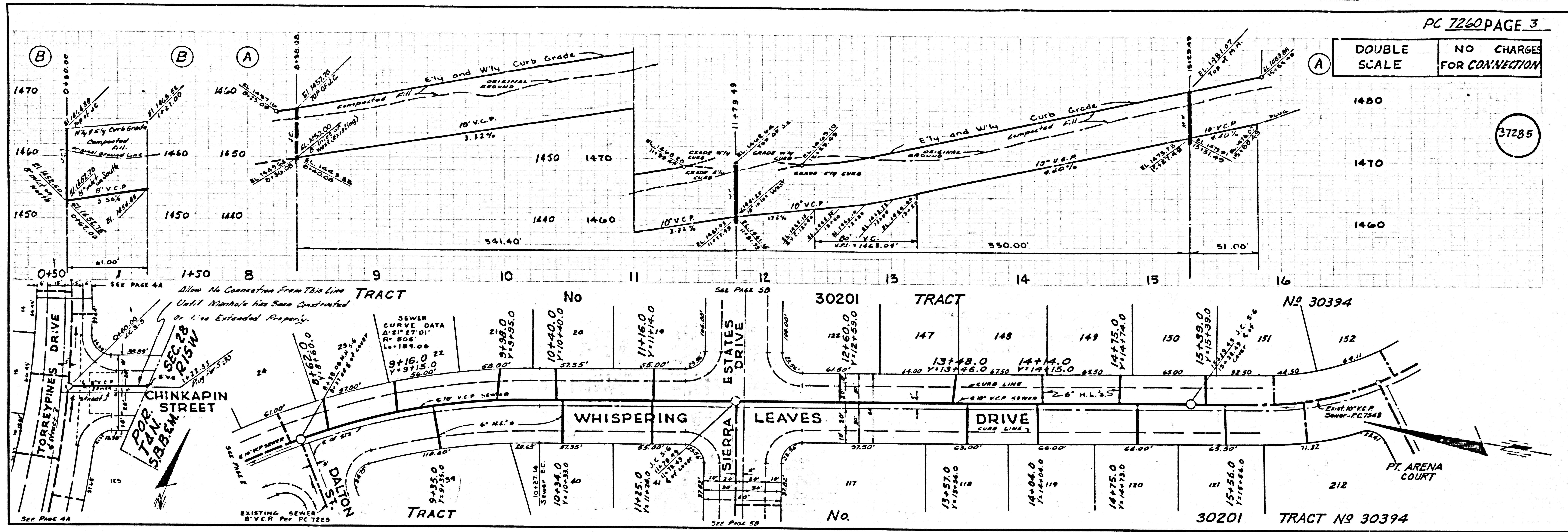


DOUBLE SCALE NO CHARGE FOR CONNECTIONS

37284

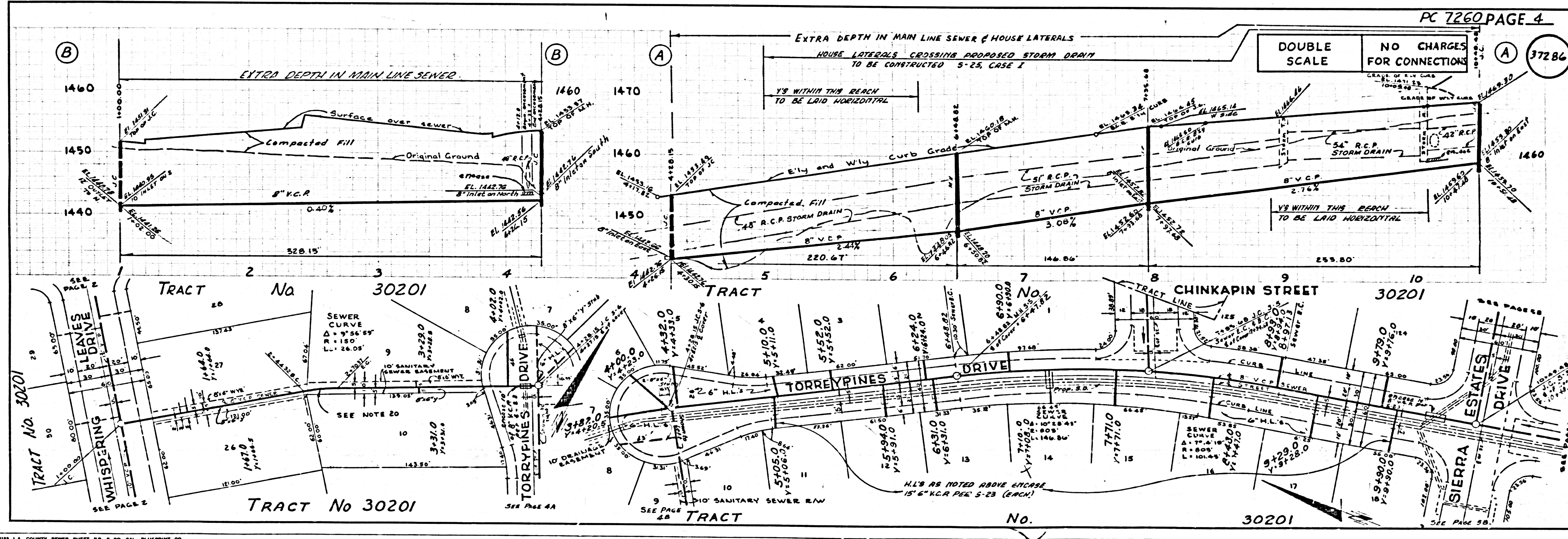
DOUBLE SCALE NO CHARGES FOR CONNECTION

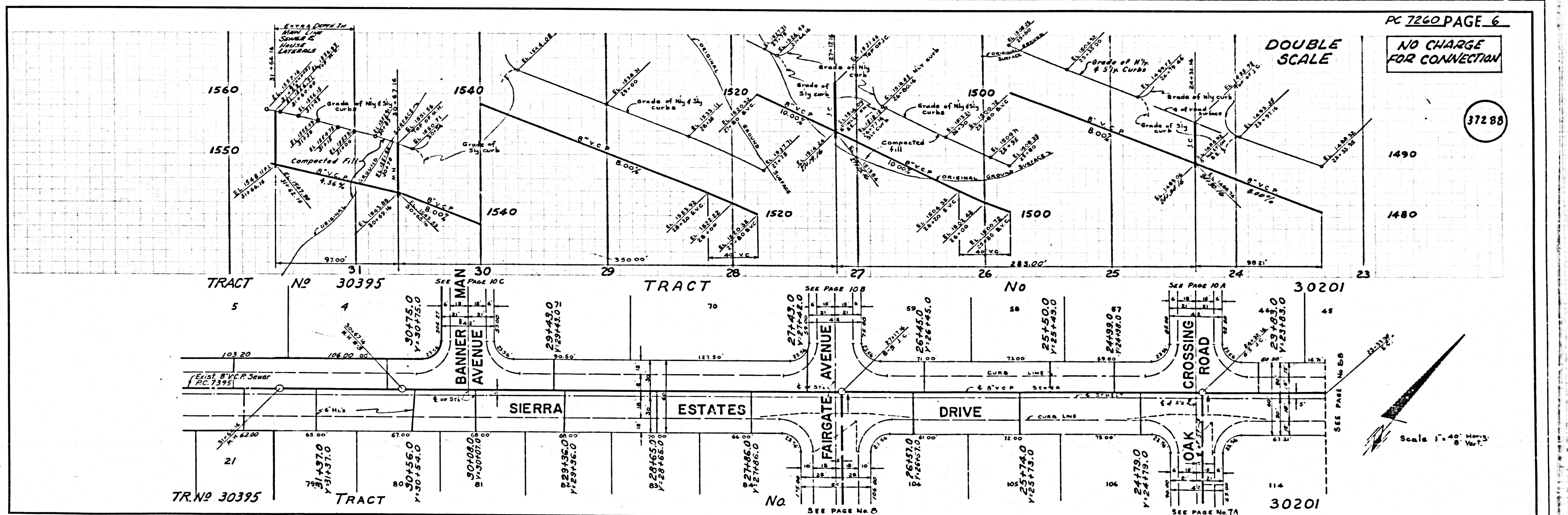
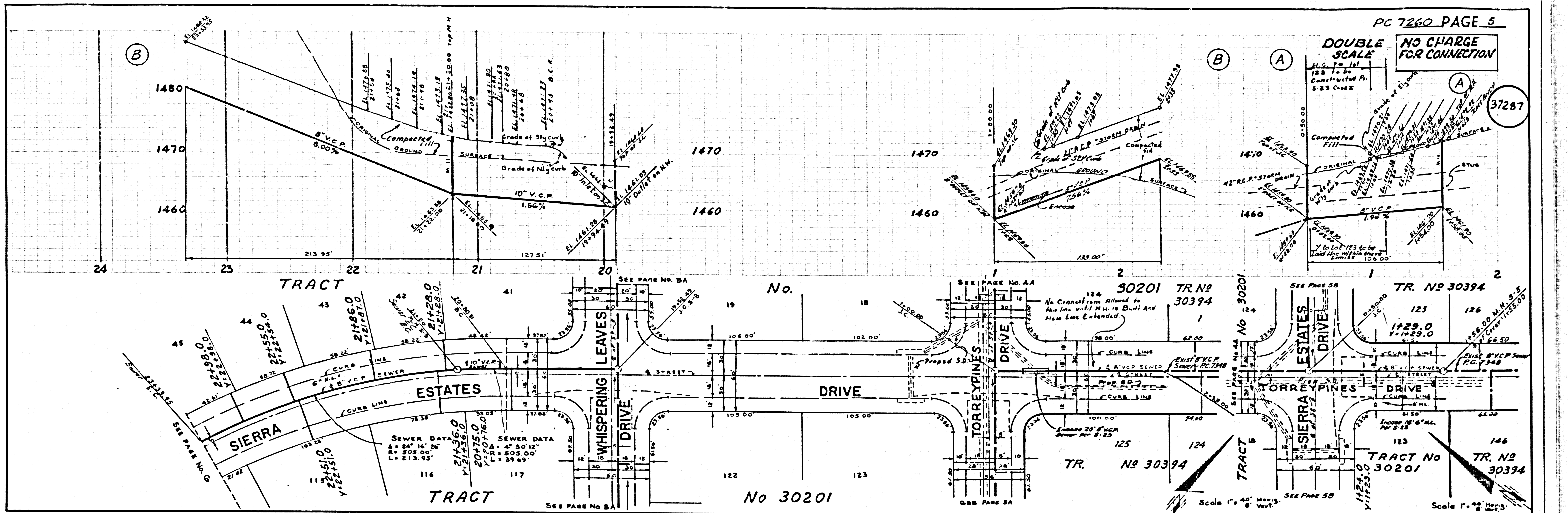
37285



DOUBLE SCALE NO CHARGES FOR CONNECTION

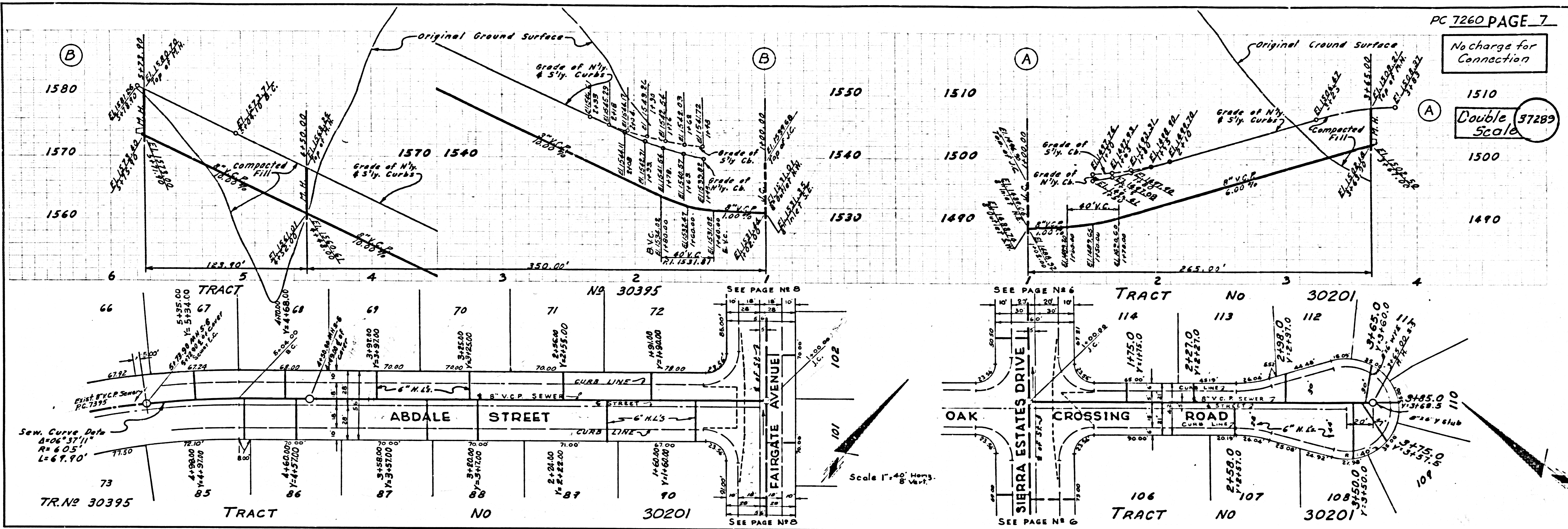
37286





No charge for Connection

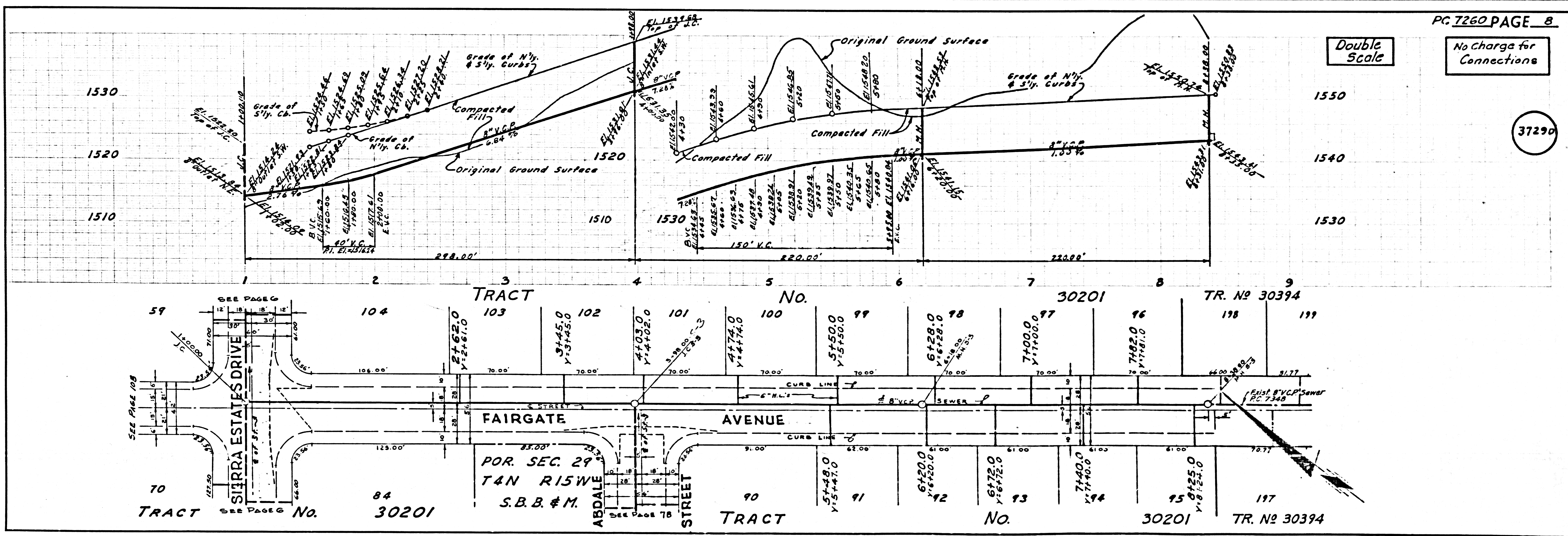
Double Scale 37289



Double Scale

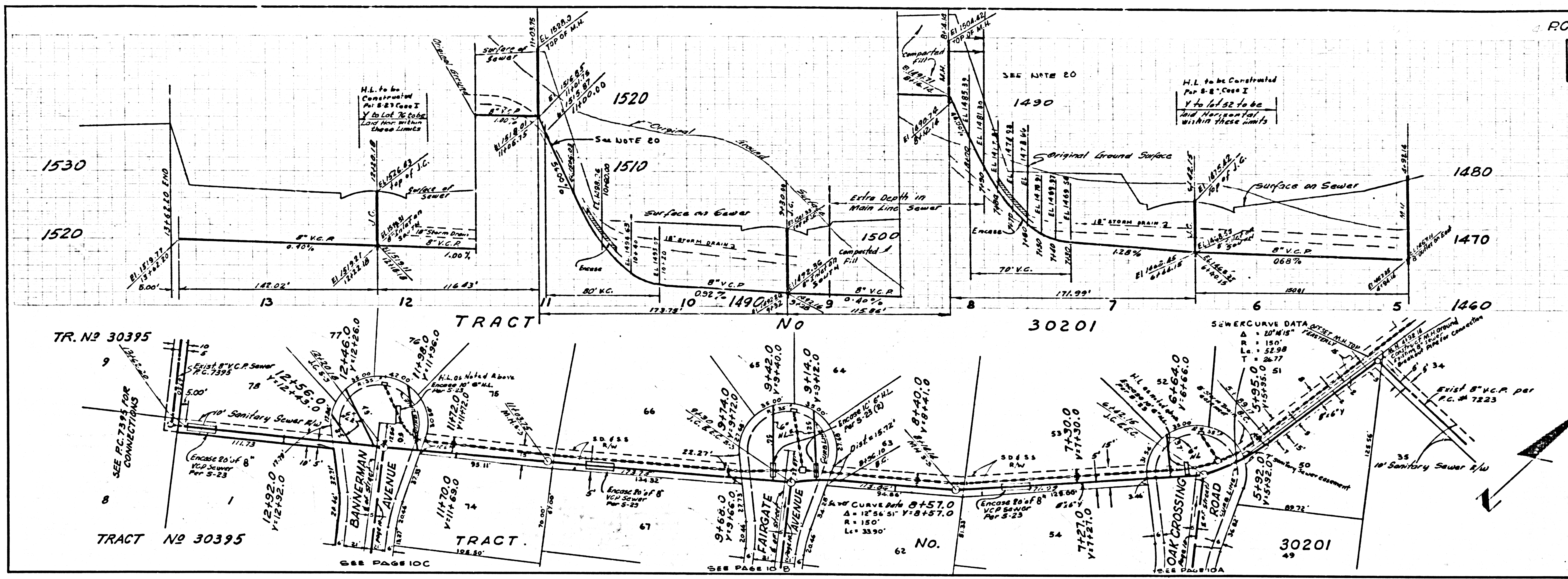
No charge for Connections

37290



No Charge for Connections

Double Scale  
37291



No Charge for Connections

Double Scale  
37292

