

B.M. 50. 2098 ELEV. 753.782
 BEGINNING AT INTERSECTION AREA
 CANYON RD & DIAMOND BAR BLVD. THENCE
 NELY ALONG DIAMOND BAR BLVD. 512'
 1/4 MILES TO CONC. HOVL. 2.65' ELY OF E
 T.P.B. IN 195. NEAR CANYON RD. AND
 OTTERBEIN QUAD. 1955

(DOUBLE SCALE)
 SAN DIMAS BLDG. DIST. NO. 10

PROFILE ALIGNMENT AND GRADE OF
 SANITARY SEWERS PAGE 1
 CONSTRUCTED IN

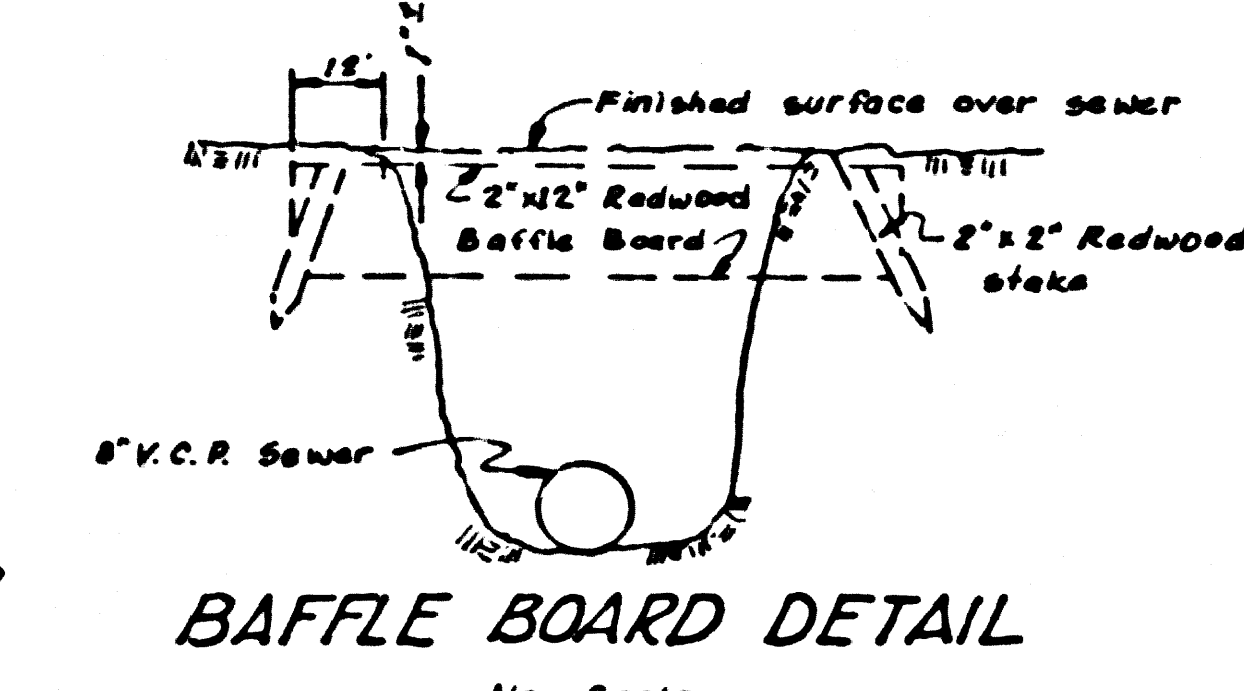
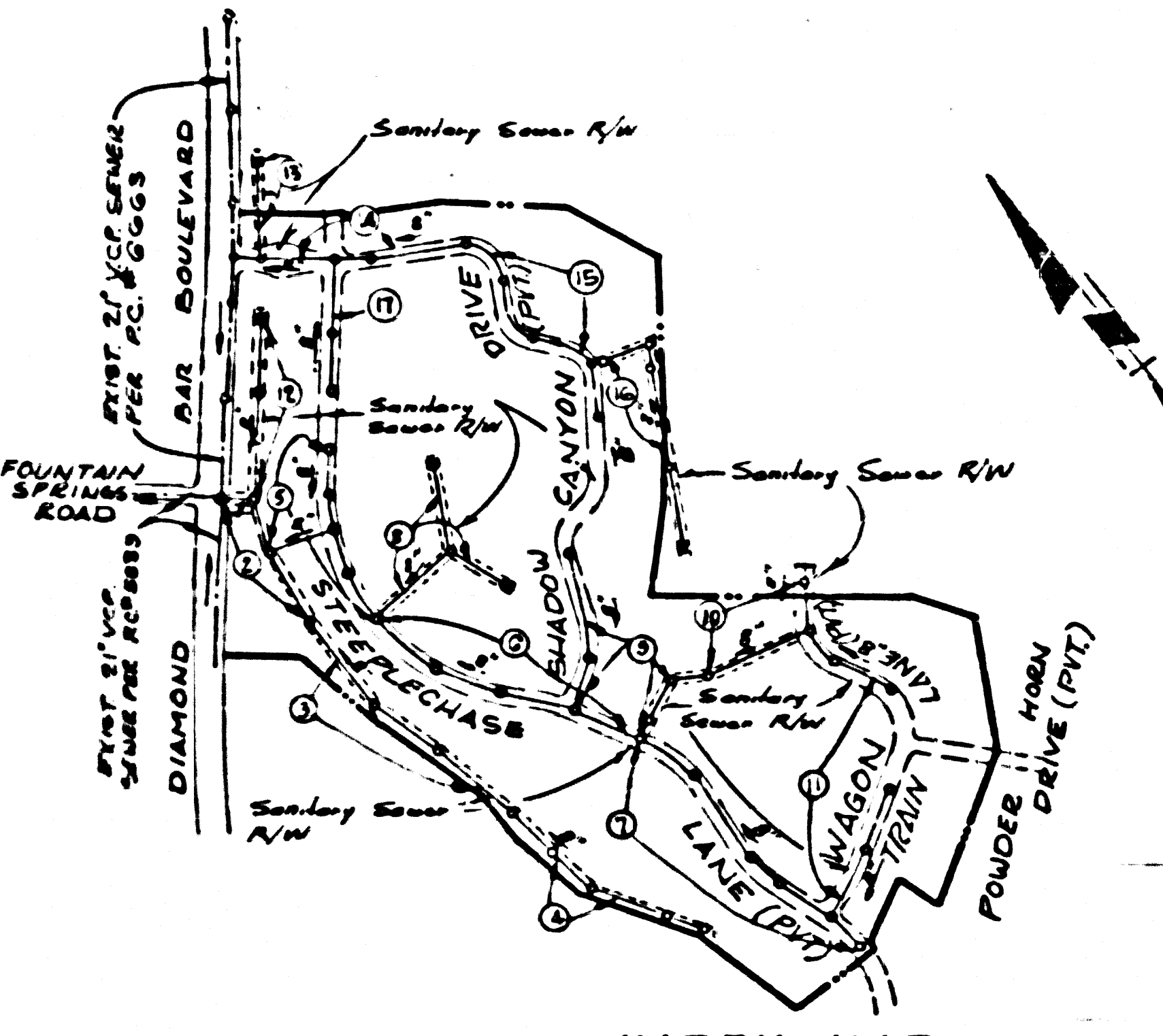
TRACT NO. 30289
 PRIVATE CONTRACT NO. 7261

W.S. 89
 9 SHEETS, 17 PAGES
 SCALE: VERT. 1" = 8' HORIZ. 1" = 40'
 DATE: SEPTEMBER 1964
 PREPARED IN THE OFFICES OF
DUTCH HOLTZHAUER ENGINEERING, INC.
 804 FLORENCE AVE. DOWNEY, CALIFORNIA 91733
 BY: *W. J. Anderson*
 REG. C. E. NO. 13,054

UNDERGROUND STRUCTURES

All underground structures or utilities reported by the owner or others and those shown on the records examined are indicated with their approximate location and extent.
 The owner by accepting these plans or proceeding with improvements pursuant here to agrees to assume the liability and to hold the undersigned harmless for any damages resulting to the existence of the underground utilities or structures not reported to the undersigned, not indicated on the public records examined, located at variance with that reported or shown on records examined.
 The contractor is required to take the precautionary measures to protect the utility or structure shown above and any other utilities or structures found at the site. It shall be the contractor's responsibility to notify the owners of the utility or structure concerned before starting work.

W. J. Anderson
 W.C. HOLTZHAUER REG. 10219



NOTES:
 1. Each end of baffle board will extend one foot into undisturbed ground.
 2. Baffle boards shall be spaced so that the top of the lower board shall be level with the bottom of the next higher board.
 3. The upper layer of backfill to be one foot minimum at top end. Top soil shall be tamped in place and planted with grasses of same type as those on adjacent slope or required in accordance with grading plan. Roll shall be adequately watered until growth is required.

REVISION:
 Raised surface over sewer
 between Stds 7+10.00 & 13+56.78.
W. J. Anderson
 Office of County Engineer R.C.E. 10463

- NOTE:
- PROVIDE STAKES ON THE PROPERTY UP TO OR PROPERTY LINES PRODUCED AT RIGHT ANGLES TO THE SEWER LINE AT THE CENTER LINE OF EACH MANHOLE.
 - NO REPRESENTATIVE OF THE COUNTY ENGINEER WILL SURVEY OR LAY OUT ANY PORTION OF THE WORK.
 - THE PRIVATE ENGINEER SHALL FURNISH THE COUNTY ENGINEER WITH GRADE SHEETS AND STATIONING FOR ALL HOUSE LATERALS AND Y BRANCHES AND SHALL PROVIDE STAKES FOR THEM AT THEIR PROPER LOCATIONS WITH STATIONING PLAINLY MARKED. ALL HOUSE LATERALS SHALL BE CONSTRUCTED IN A STRAIGHT ALIGNMENT AT RIGHT ANGLES FROM THE MAIN LINE SEWER EXCEPT AS SHOWN ON THE PLANS. ANY CHANGE IN ALIGNMENT SHALL BE REQUESTED IN WRITING BY THE PRIVATE ENGINEER.
 - THE PRIVATE ENGINEER SHALL FURNISH THE HOUSE LATERAL SIZES AT THE PROPERTY LINE BELOW THE TOP OF CURB ELEVATION FOR EACH HOUSE LATERAL ON THE GRADE SHEET.
 - NO REVISIONS SHALL BE MADE IN THESE PLANS WITHOUT THE APPROVAL OF THE COUNTY ENGINEER.
 - THE CONTRACTOR SHALL NOTIFY THE CONSTRUCTION DIVISION BY TELEPHONE, MAIL OR IN PERSON, AT LEAST TWENTY-FOUR HOURS BEFORE STARTING ANY WORK UNDER THIS CONTRACT.
 - MANHOLES SHALL BE SPICE SEWER STRUCTURES PER S-5. PRECAST CONCRETE MANHOLES PER S-5 DE S-5 MAY BE USED AS AN ALTERNATE IN LOCATIONS APPROVED BY THE COUNTY ENGINEER.
 - USE STANDARD MANHOLE FRAMES AND COVERS, S-10.
 - MANHOLE TOPS IN UNIMPROVED RIGHTS-OF-WAY TO BE SIX INCHES ABOVE FINISHED GRADE.
 - USE EXTRA STRENGTH PIPE. ALL PIPE IS STANDARD DEPTH EXCEPT AS NOTED.
 - USE MECHANICAL COMPRESSION JOINTS FOR ALL V.C.P. JOINTS PER SPEC. SECT. 34 - 48.47.
 - IF A POWER POLE IS WITHIN THREE FEET OF THE SEWER, THE SEWER SHALL BE ENCASED PER S-25 TWO FEET ON EITHER SIDE FROM THE POINT OF INTERFERENCE.
 - IF DURING THE COURSE OF CONSTRUCTION IT IS DETERMINED THAT THERE IS LESS THAN FIFTEEN FEET OF COVER OVER THE TOP OF A MAIN LINE OR HOUSE LATERAL V.C.P. SEWER WHICH IS NOT INDICATED ON THE PLANS, THE PIPE SHALL BE ENCASED PER S-25 UNLESS OTHERWISE APPROVED BY THE COUNTY ENGINEER.
 - HOUSE LATERALS TO BE CONSTRUCTED WITH INVERTS AT PROPERTY LINE ... NOT BELOW GRADE OF 1/8" STRAIGHT.
 - RESURFACE ALL FINISHES WITHIN PAVED AREAS TO MEET L.A. COUNTY ROAD DEPT. OR CALIFORNIA STATE HIGHWAY REQUIREMENTS IN ACCORDANCE WITH PERMITS.
 - FOR ALLOWABLE LEAKAGE TEST USE FORMULA NO. 5, SPEC. SEC. 34.
 - ALL STATE & LOCAL TRENCH SAFETY ORDINANCES SHALL BE STRICTLY ENFORCED.
 - CONSTRUCTION IN FILLED AREAS:
 (a) AN ACCEPTABLE CERTIFICATION BY CONSTRUCTION TEST ANALYST SHALL BE SUBMITTED TO THE CONSTRUCTION DIVISION. CONSTRUCTION TEST SET TO BE MADE IN ACCORDANCE WITH A.S.T.M. STANDARD METHOD OF TEST C-69 B-TEST.
 (b) NO CONSTRUCTION IS PERMITTED IN FILLED AREAS WHERE THE RELATIVE DENSITY OF COMPACTION IS LESS THAN 90%. IF THE RELATIVE DENSITY OF COMPACTION IS LESS THAN 90%, ALL MAIN LINES AND HOUSE LATERALS SHALL BE ENCASED PER S-25 OR HAVE A SPECIAL BASE COVERED PER S-25.
 (c) IF THE RELATIVE DENSITY OF COMPACTION IS 90% OR GREATER, THE SPECIAL PROVISIONS IN (b) ARE NOT REQUIRED.

COLLECT CHARGES AS INDICATED
 PR. Smith 8/26/65

NO CONNECTIONS FOR THE DISPOSAL OF INDUSTRIAL WASTES SHALL BE MADE TO SEWERS SHOWN ON THESE DRAWINGS WITHOUT WRITTEN PERMISSION FROM THE CHIEF ENGINEER AND GENERAL MANAGER OF THE COUNTY SANITATION DISTRICTS.

FOR LEGEND SEE PLAN NO. S-1

GRADES TO WHICH THIS IMPROVEMENT IS TO BE CONSTRUCTED ARE SHOWN ON PLANS AND PROFILE. GRADE POINTS FOR TOP OF CURB, CENTER LINE OF STREETS, OR CENTER LINE OF ALLEYS ARE SHOWN BY CIRCLES ON PROFILES AT ALL POINTS BETWEEN DESIGNATED POINTS. THE GRADE SHALL BE ESTABLISHED SO AS TO CONFORM TO A STRAIGHT LINE BETWEEN SAID DESIGNATED POINTS. ELEVATIONS ARE IN FEET ABOVE U.L.C. & G.E. SEA LEVEL, DATUM OF 1929.

THE SEWER AND DATA HEREON ARE HEREBY MADE A PART OF THE SPECIFICATIONS OF THE COUNTY ENGINEER AND SHALL BE PROSECUTED ONLY IN THE PRESENCE OF THE COUNTY ENGINEER.

WORK SHALL BE CONSTRUCTED ACCORDING TO STANDARD SPECIFICATIONS DATED 3-29-65 ON FILE IN THE OFFICE OF THE COUNTY ENGINEER AND SHALL BE PROSECUTED ONLY IN THE PRESENCE OF THE COUNTY ENGINEER.

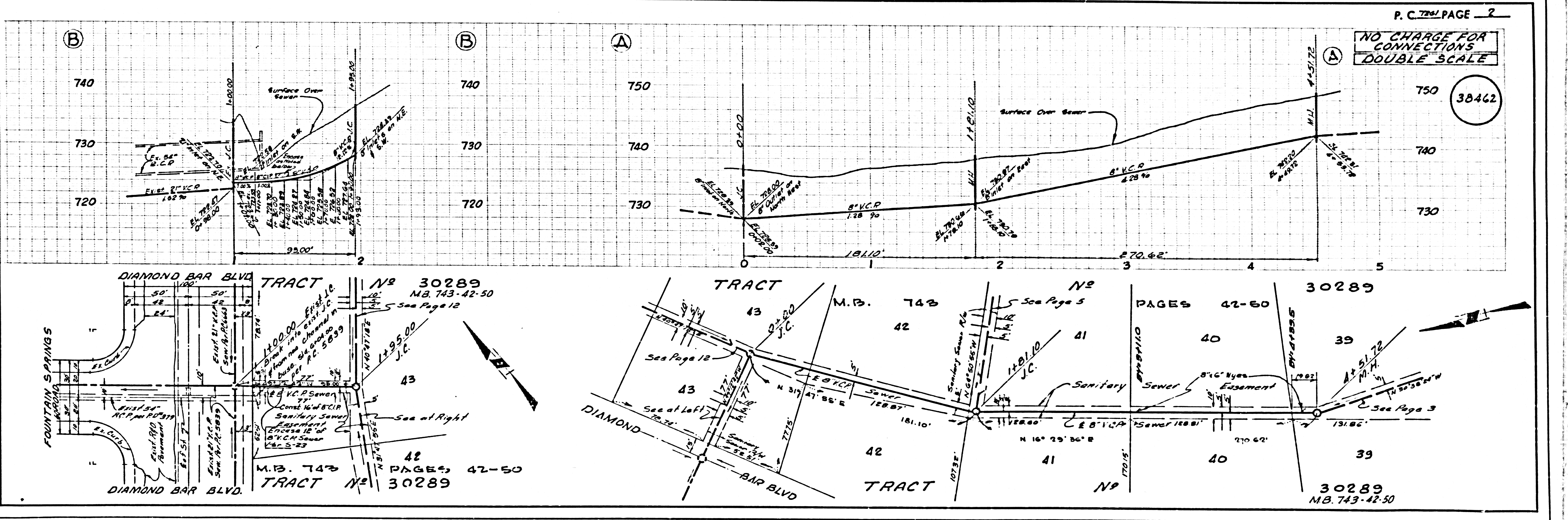
BEFORE WORK CAN BE STARTED, THE CONTRACTOR MUST OBTAIN A PERMIT TO EXCAVATE IN COUNTY STREETS FROM THE L.A. COUNTY ROAD DEPT., DISTRICT OFFICE NO. 7, AND PAY A FEE TO THE COUNTY ENGINEER, ROOM 130, COUNTY ENGINEER'S BUILDING, 108 WEST SECOND STREET, LOS ANGELES, CALIFORNIA. REGIONAL OFFICE, SUPPLEMENT TO COVER THE COST OF CONSTRUCTION INSPECTION AND RECORD PLANS.

APPROVAL OF THIS PLAN BY THE COUNTY OF LOS ANGELES DOES NOT CONSTITUTE A REPRESENTATION AS TO THE ACCURACY OF THE LOCATION OF OR THE EXISTENCE OR NON-EXISTENCE OF ANY UNDERGROUND UTILITY PIPE, OR STRUCTURE, WITHIN THE LIMITS OF THIS PROJECT. THIS NOTE APPLIES TO ALL PAGES.

IF WORK IS TO BE DONE IN A STATE HIGHWAY, A PERMIT MUST BE OBTAINED FROM THE STATE OF CALIFORNIA, DIVISION OF HIGHWAYS, 130 SOUTH SPRING STREET, LOS ANGELES, CALIFORNIA.

COUNTY OF LOS ANGELES, CALIFORNIA
 JOHN A. LAMBIE, COUNTY ENGINEER
 J. D. PARKHURST, CHIEF ENGINEER
 CO. SAN. DIST. NO. 10
 APPROVED BY: *W. J. Anderson* APPROVED BY: *W. J. Anderson*
 ASSISTANT SANITATION ENGINEER
 SUBMITTED BY: *W. J. Anderson*
 SAN DIMAS REGIONAL ENGINEER
 CHECKED BY: *W. J. Anderson* 8-27-65
 REG. C.E. NO. 10283

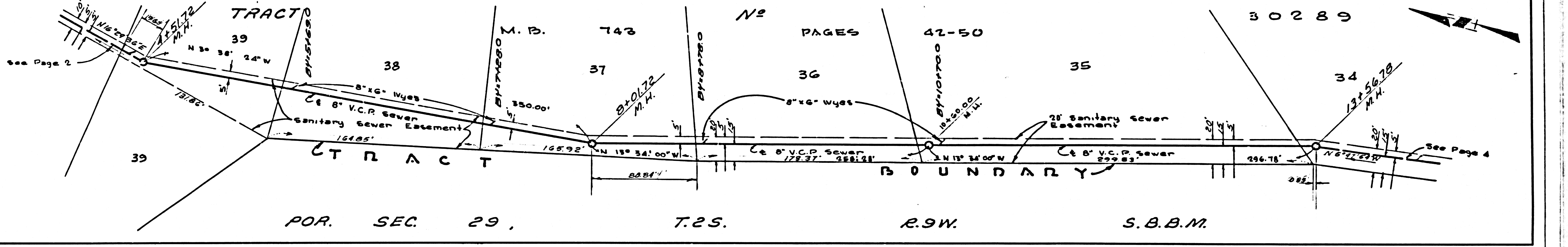
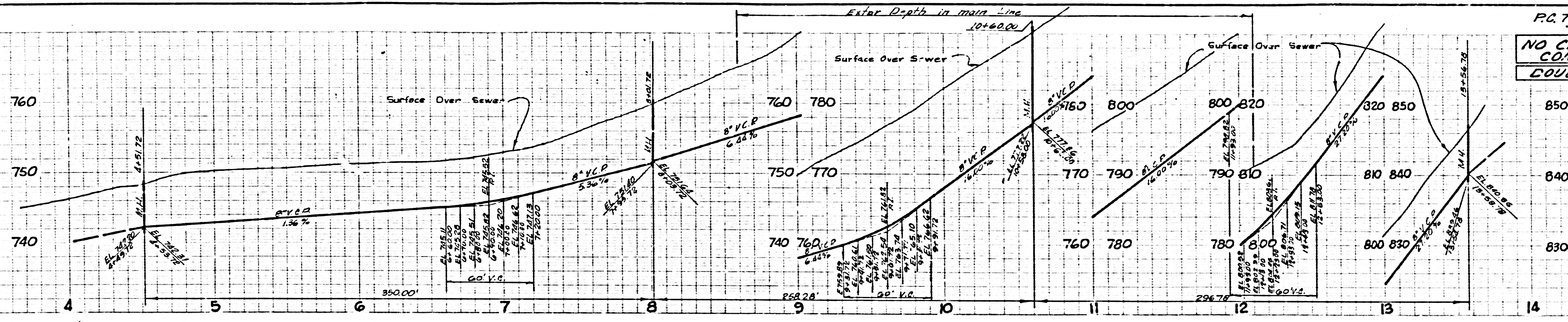
J.N. 0365.00



P.C. 7261 PAGE 2
 NO CHARGE FOR CONNECTIONS
 DOUBLE SCALE
 38462

NO CHARGE FOR CONNECTIONS
DOUBLE SCALE

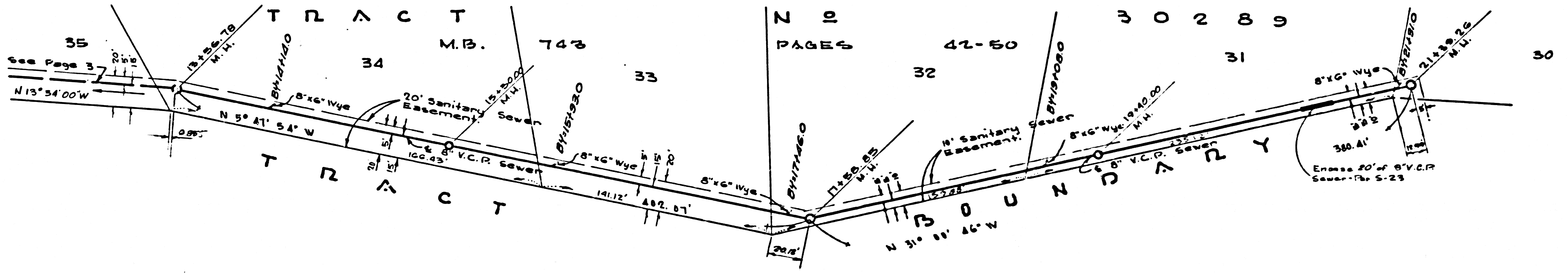
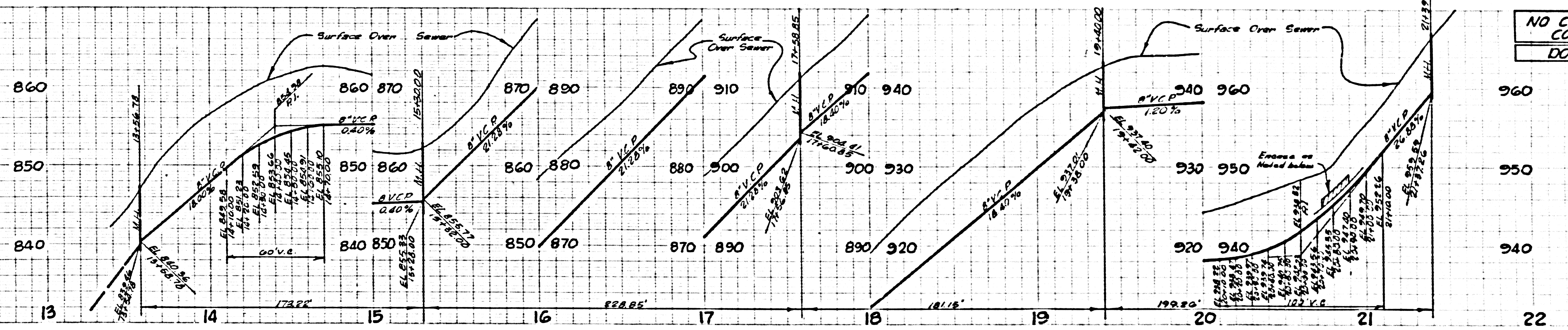
38463



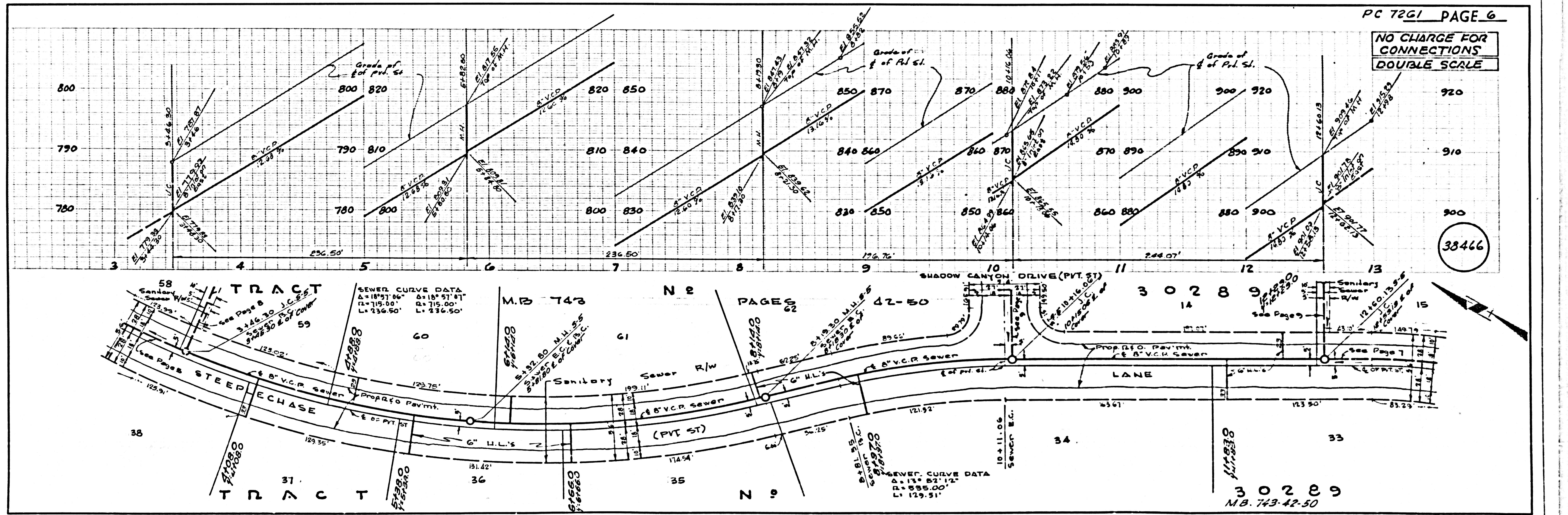
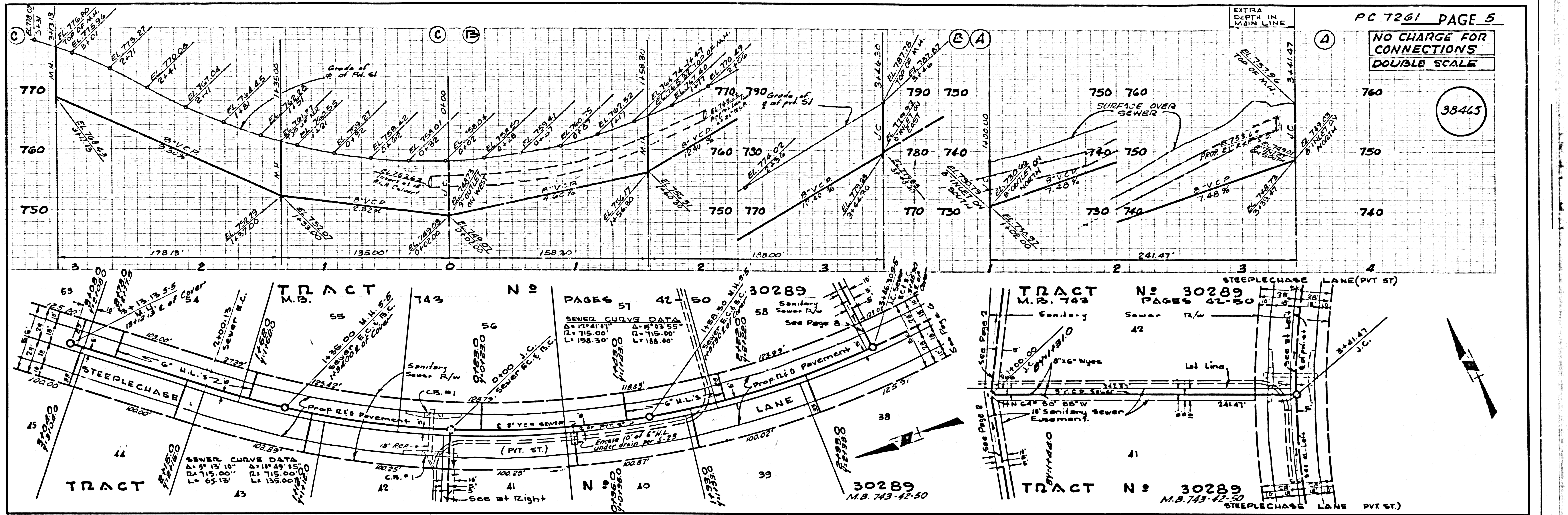
POR. SEC. 29, T. 2 S. R. 9 W. S. B. B. M.

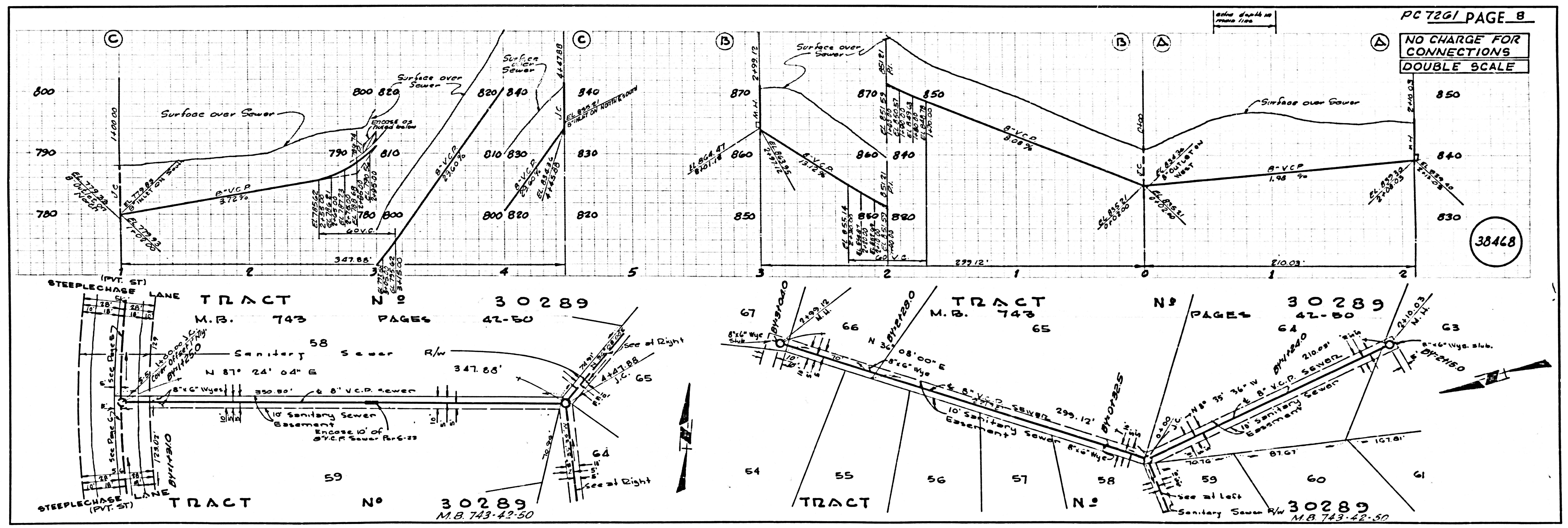
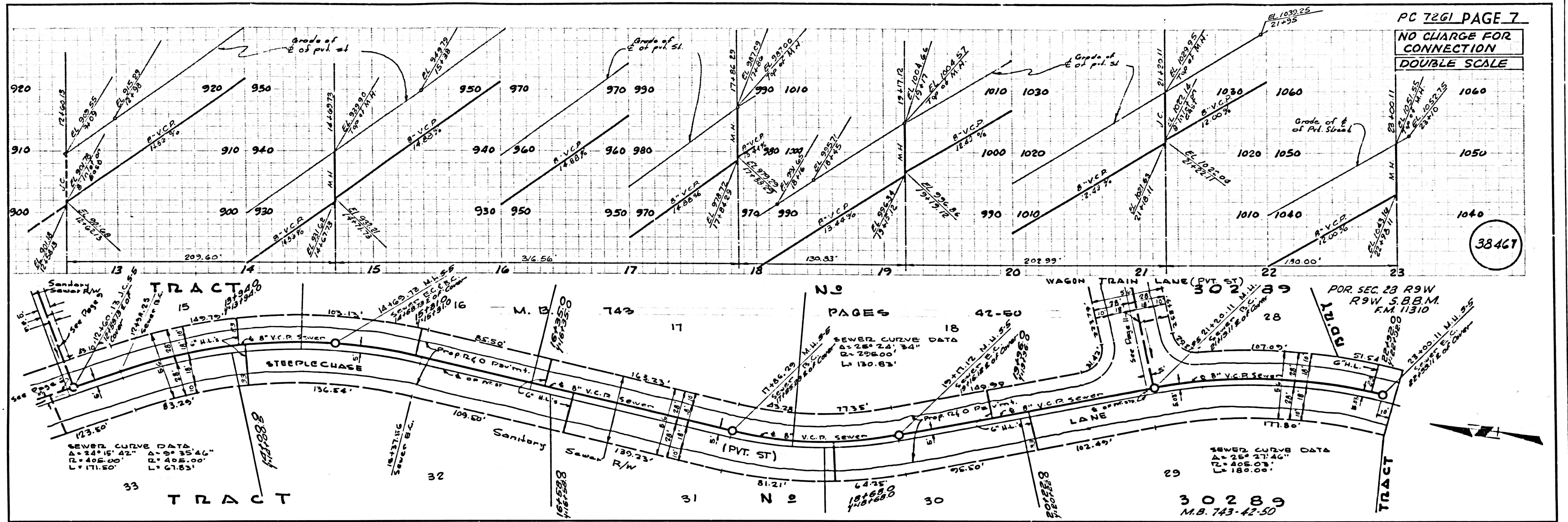
NO CHARGE FOR CONNECTIONS
DOUBLE SCALE

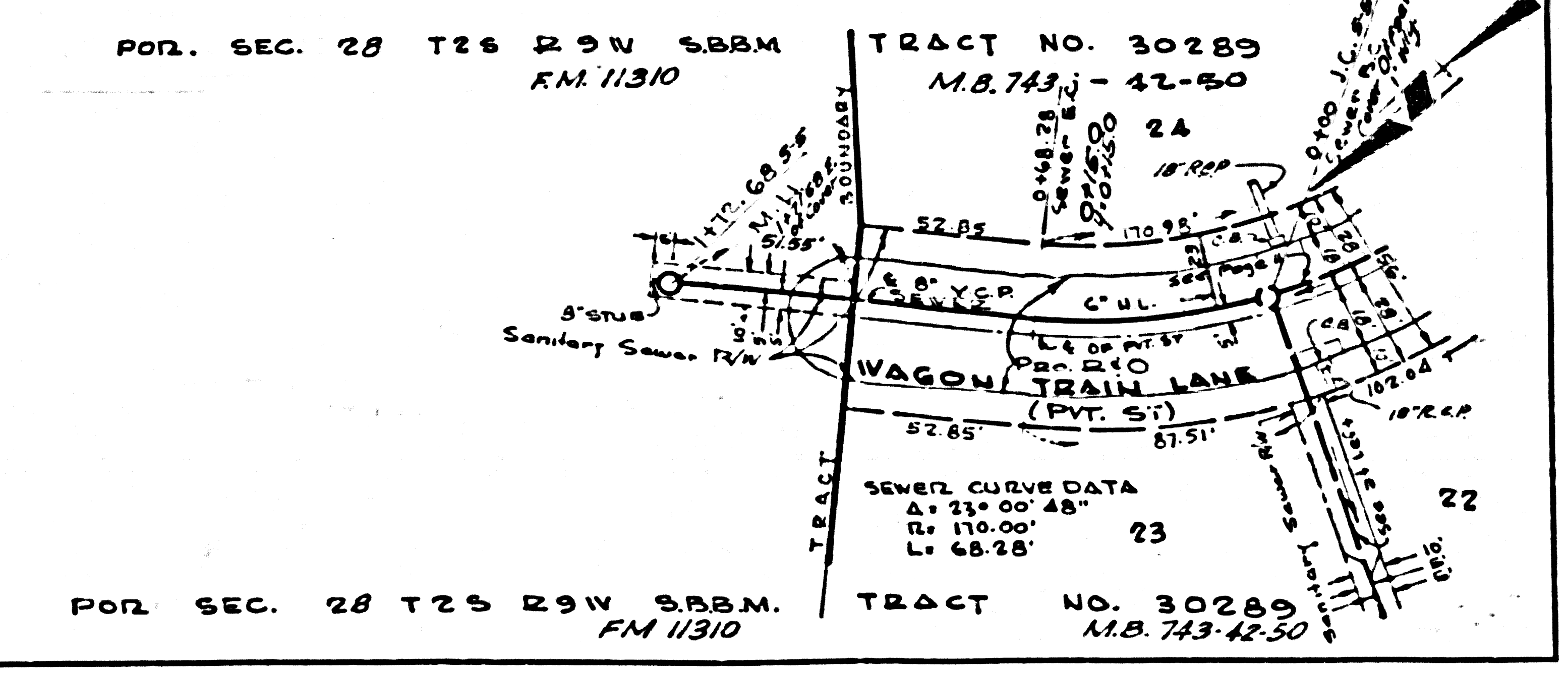
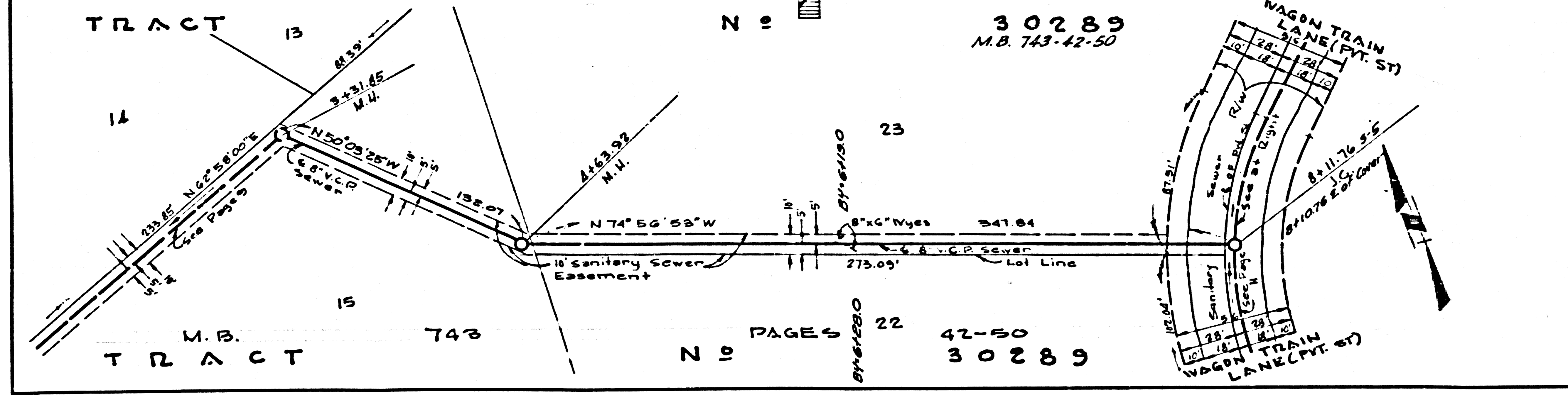
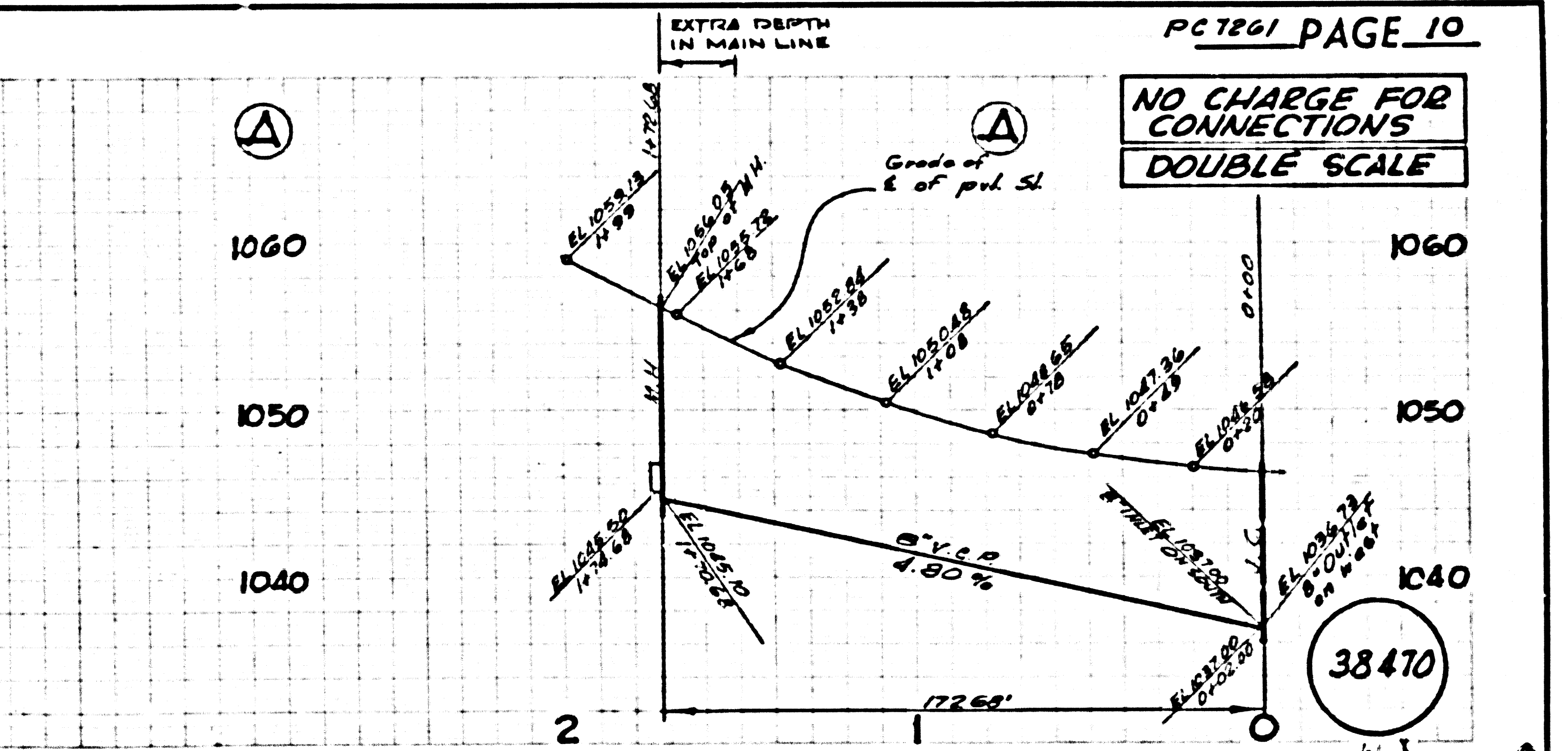
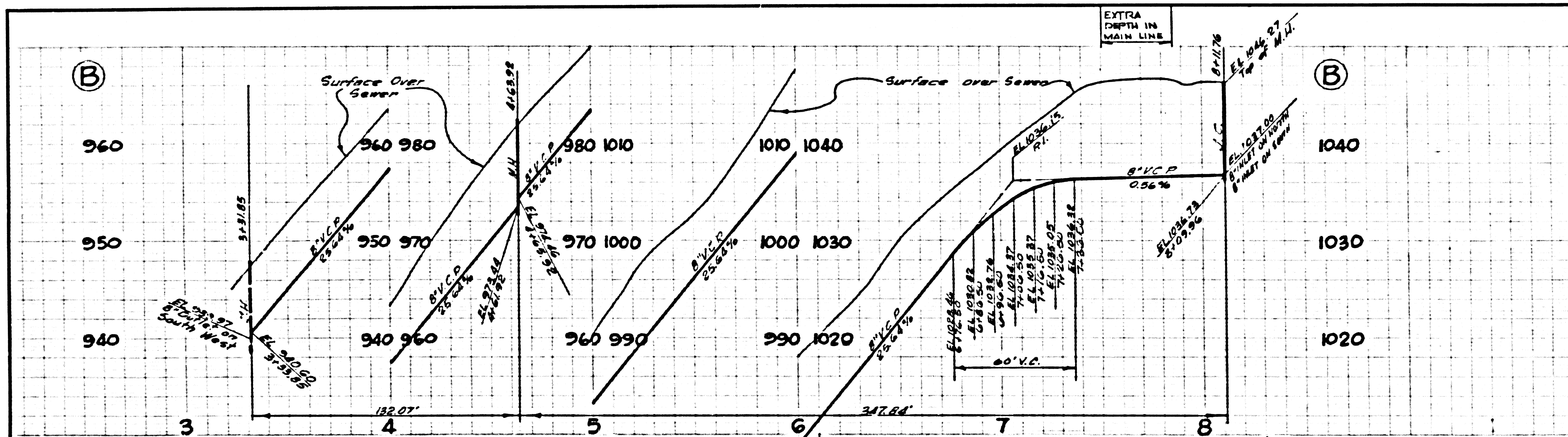
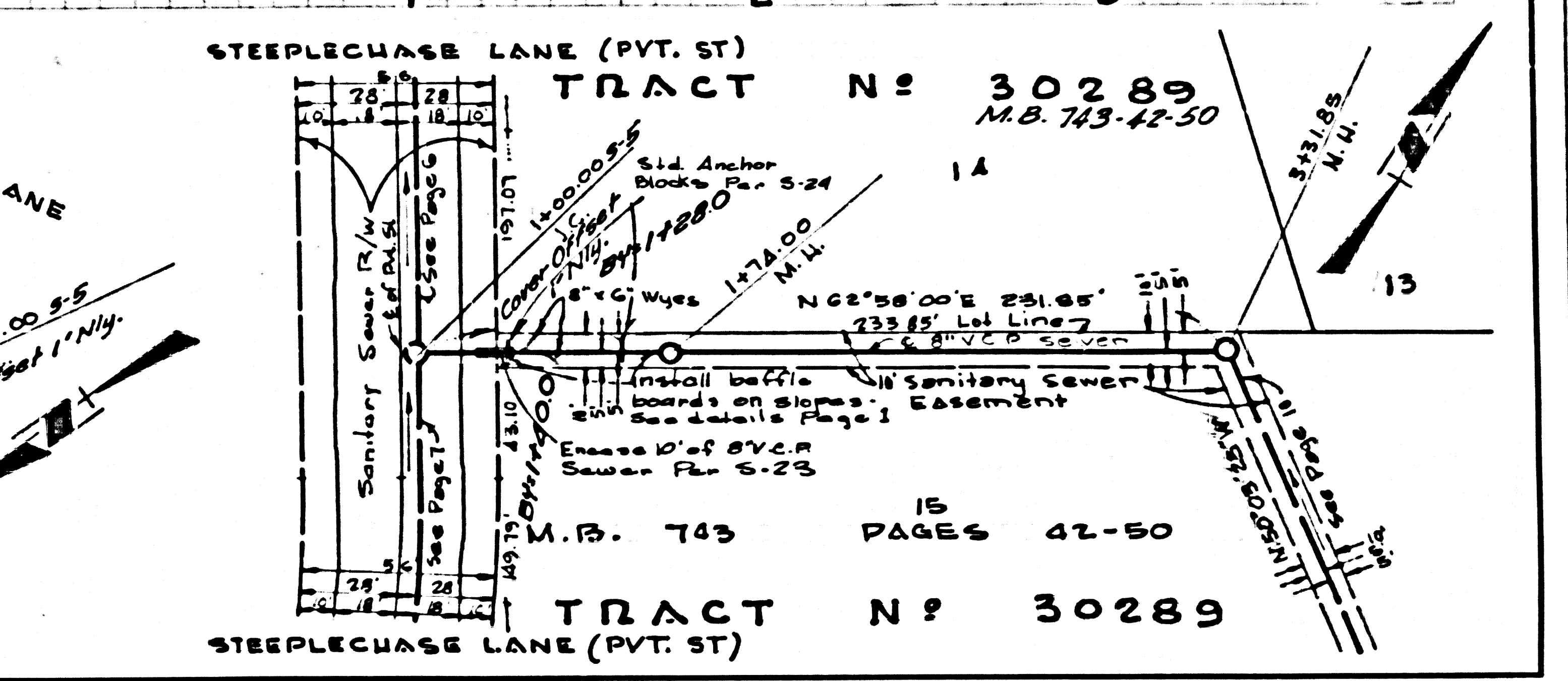
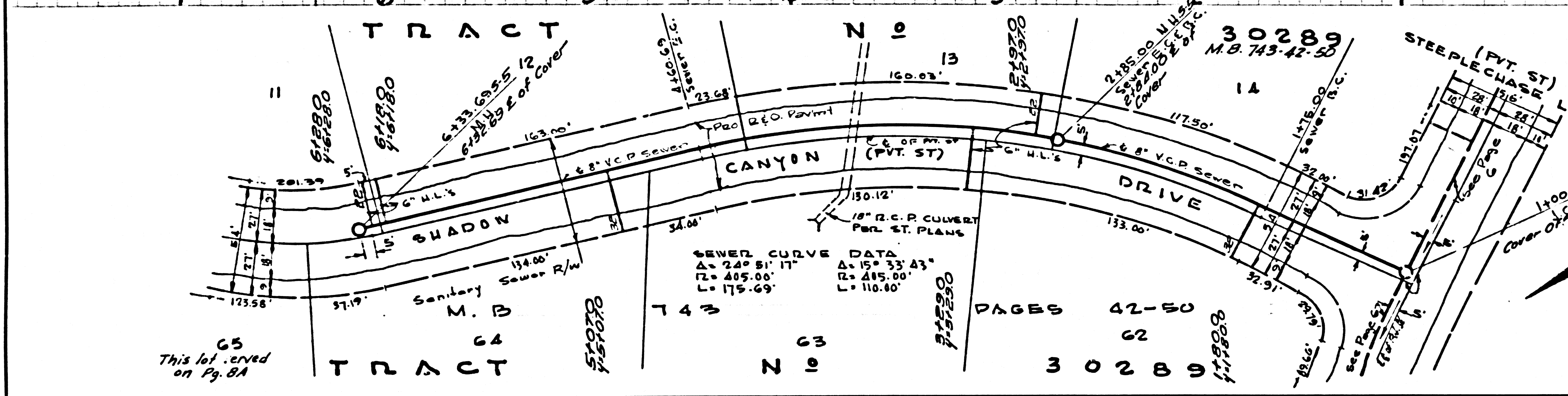
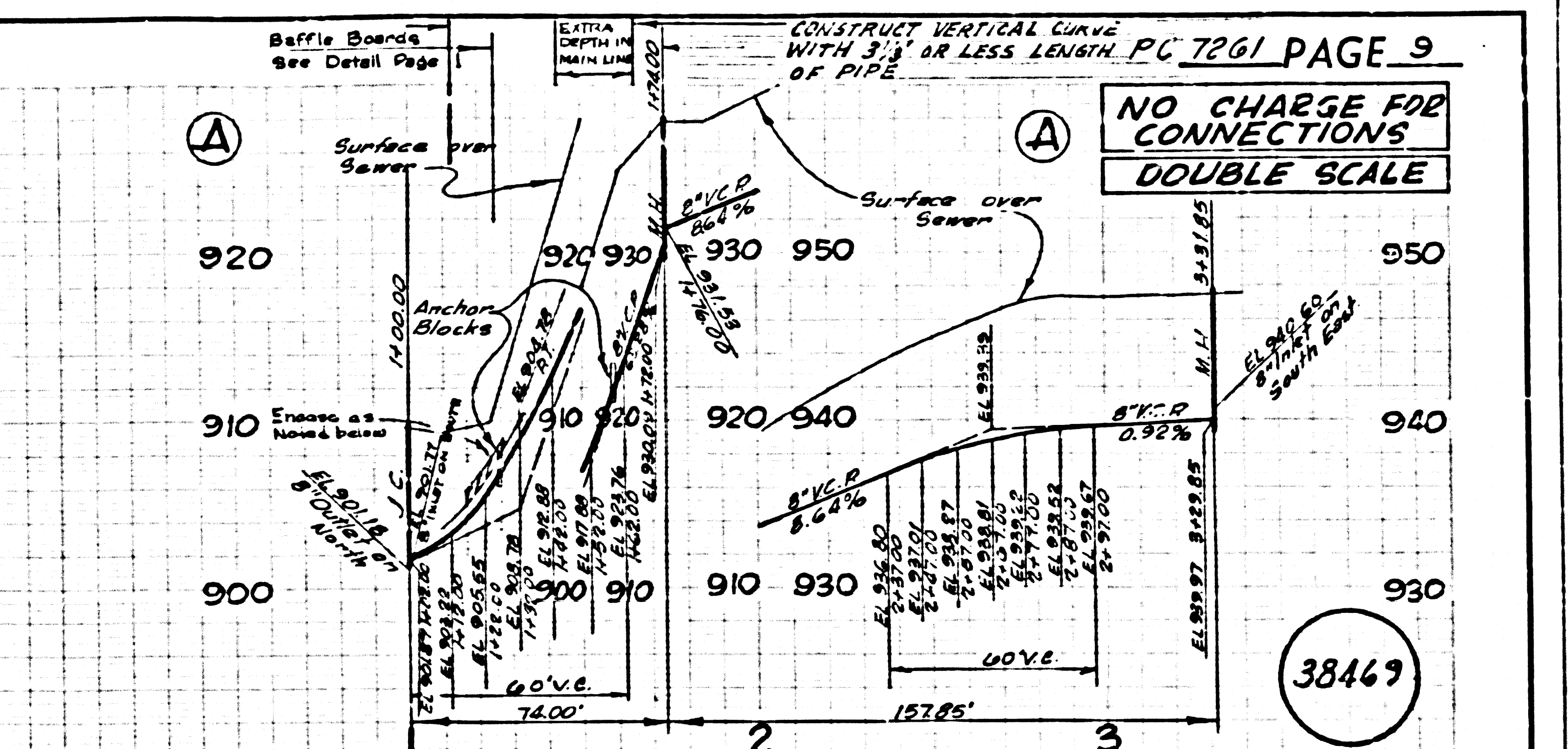
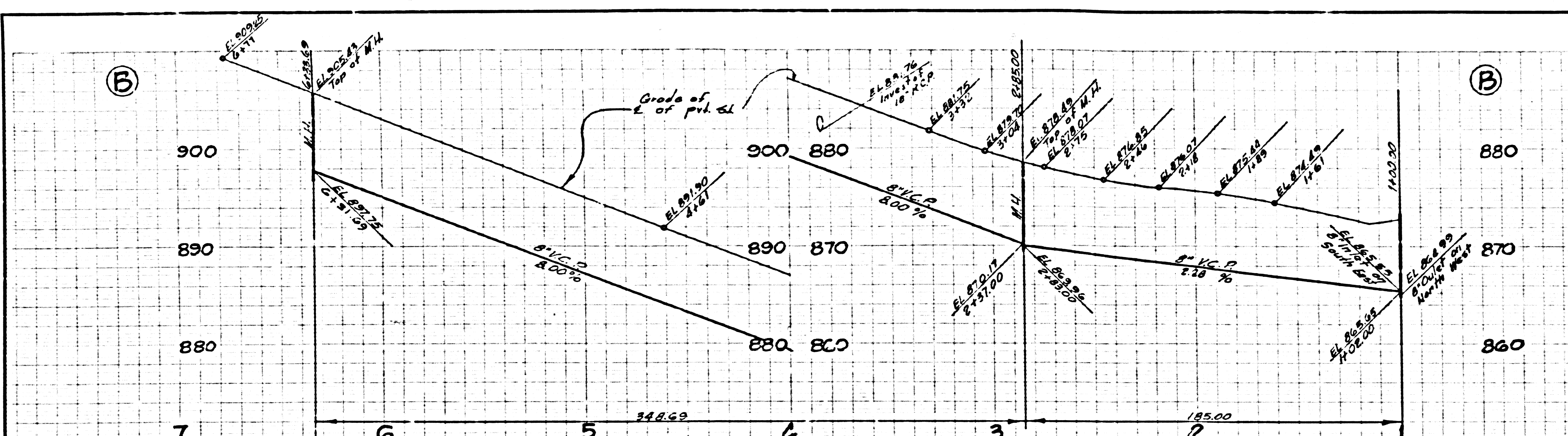
38464

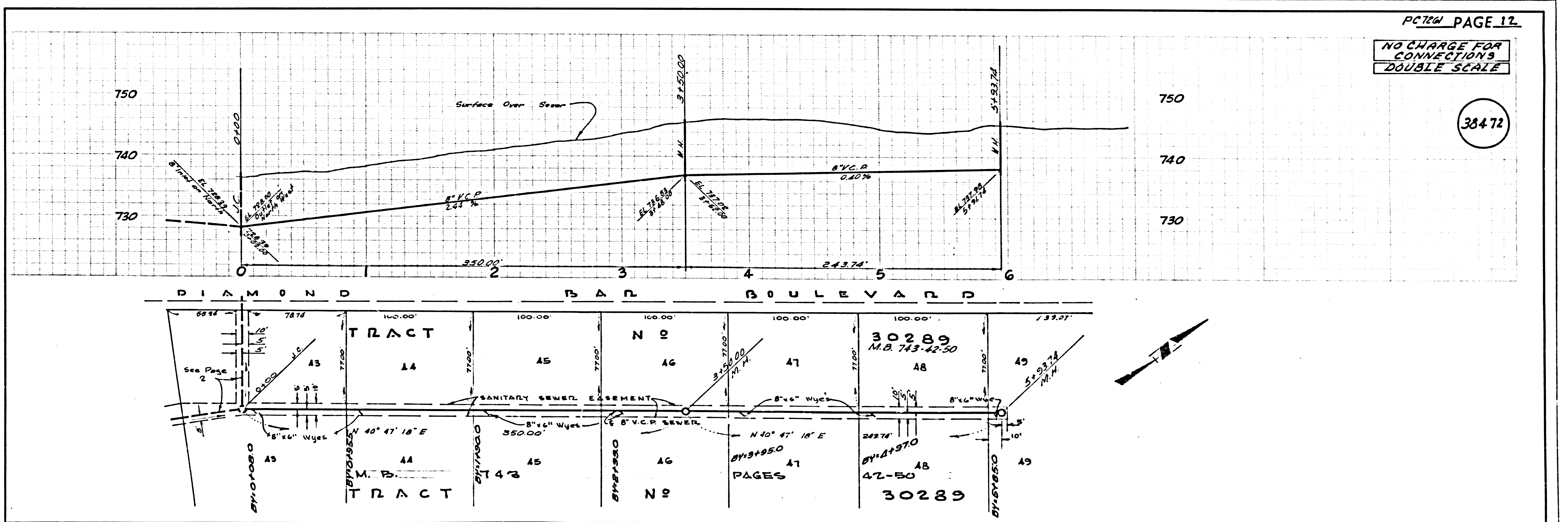
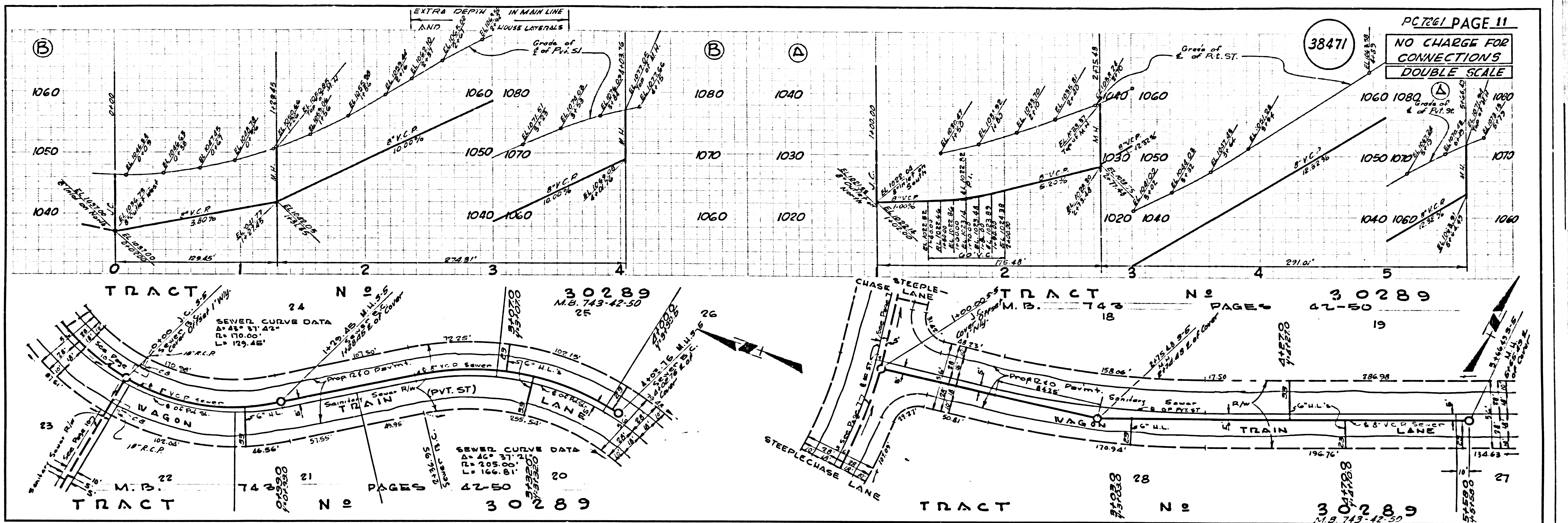


POR. SEC. 29, T. 2 S. R. 9 W. S. B. B. M.



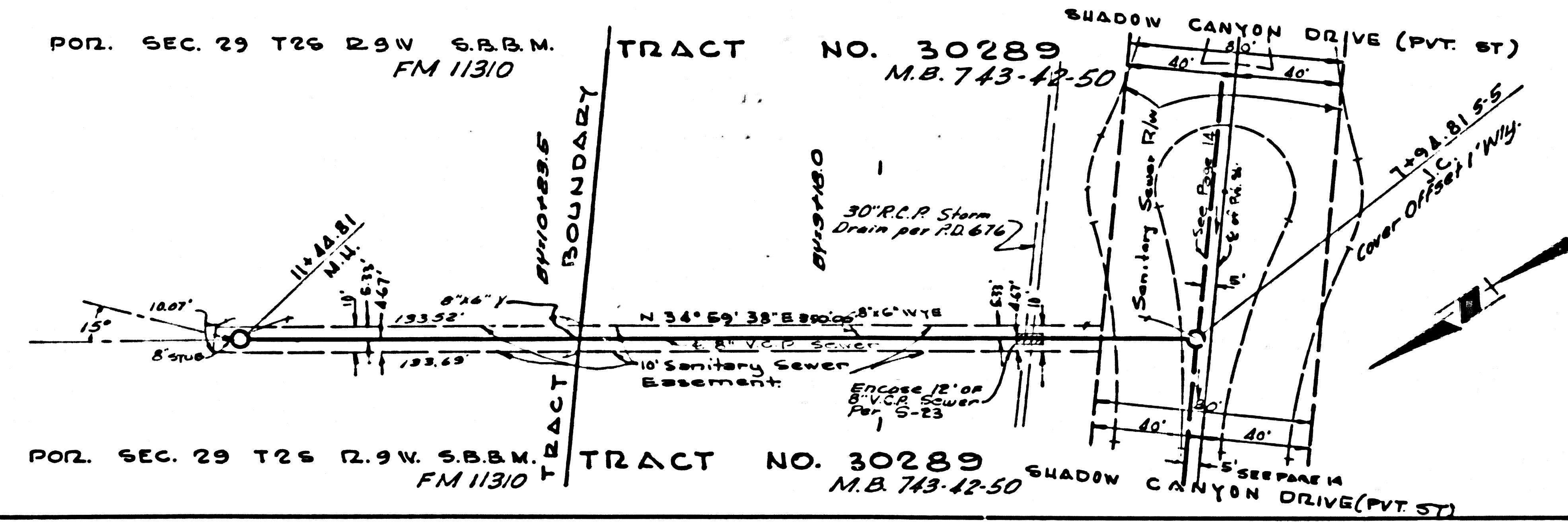
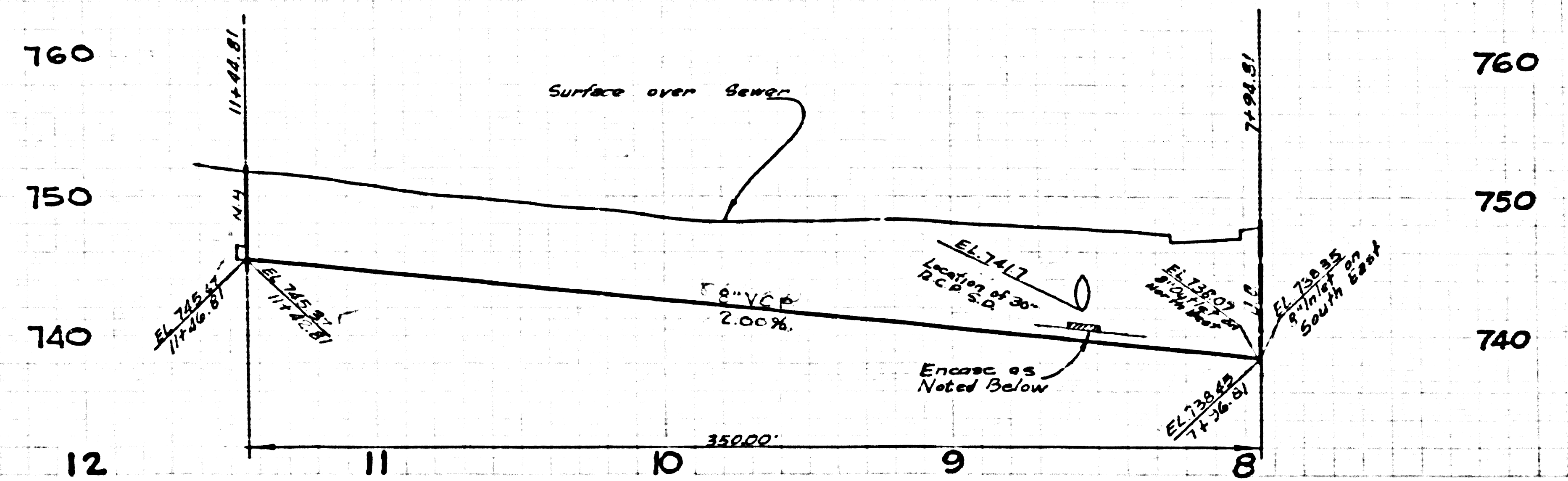






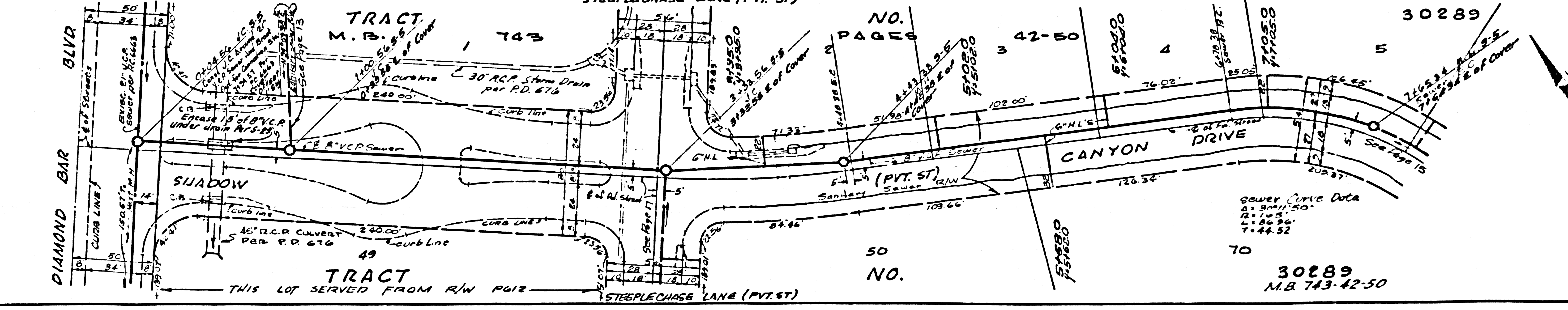
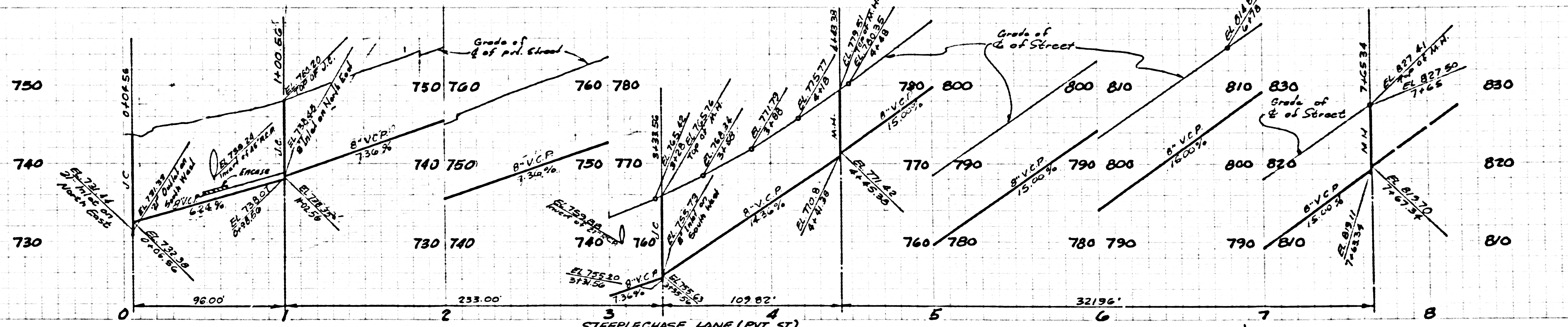
NO CHARGE FOR CONNECTIONS
DOUBLE SCALE

38473

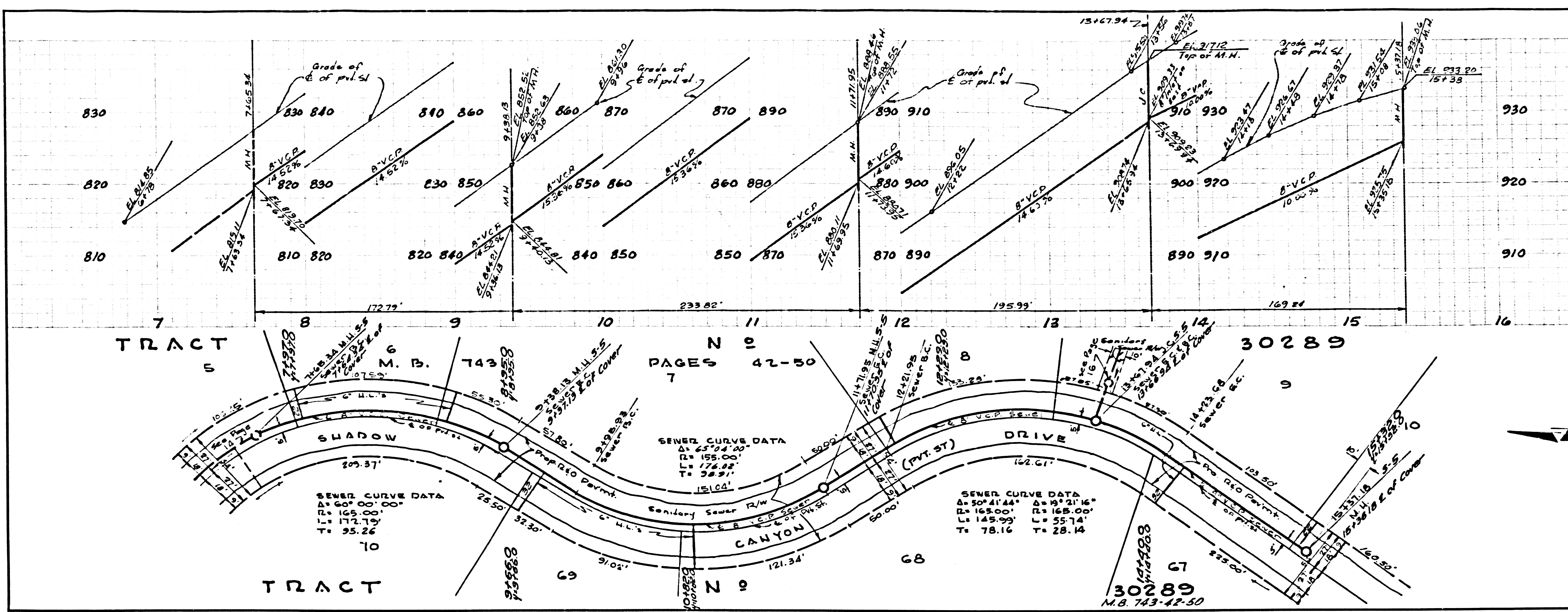


NO CHARGE FOR CONNECTION
DOUBLE SCALE

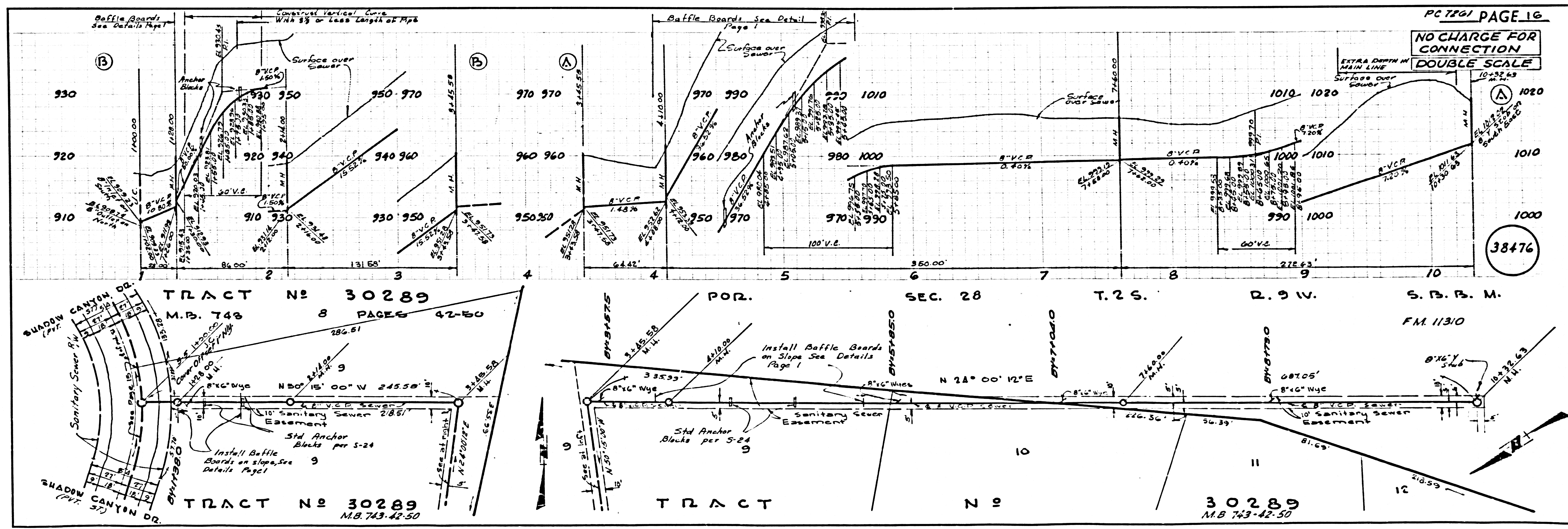
38474



38475



38476



NO CHARGE FOR CONNECTIONS
DOUBLE SCALE

38477

