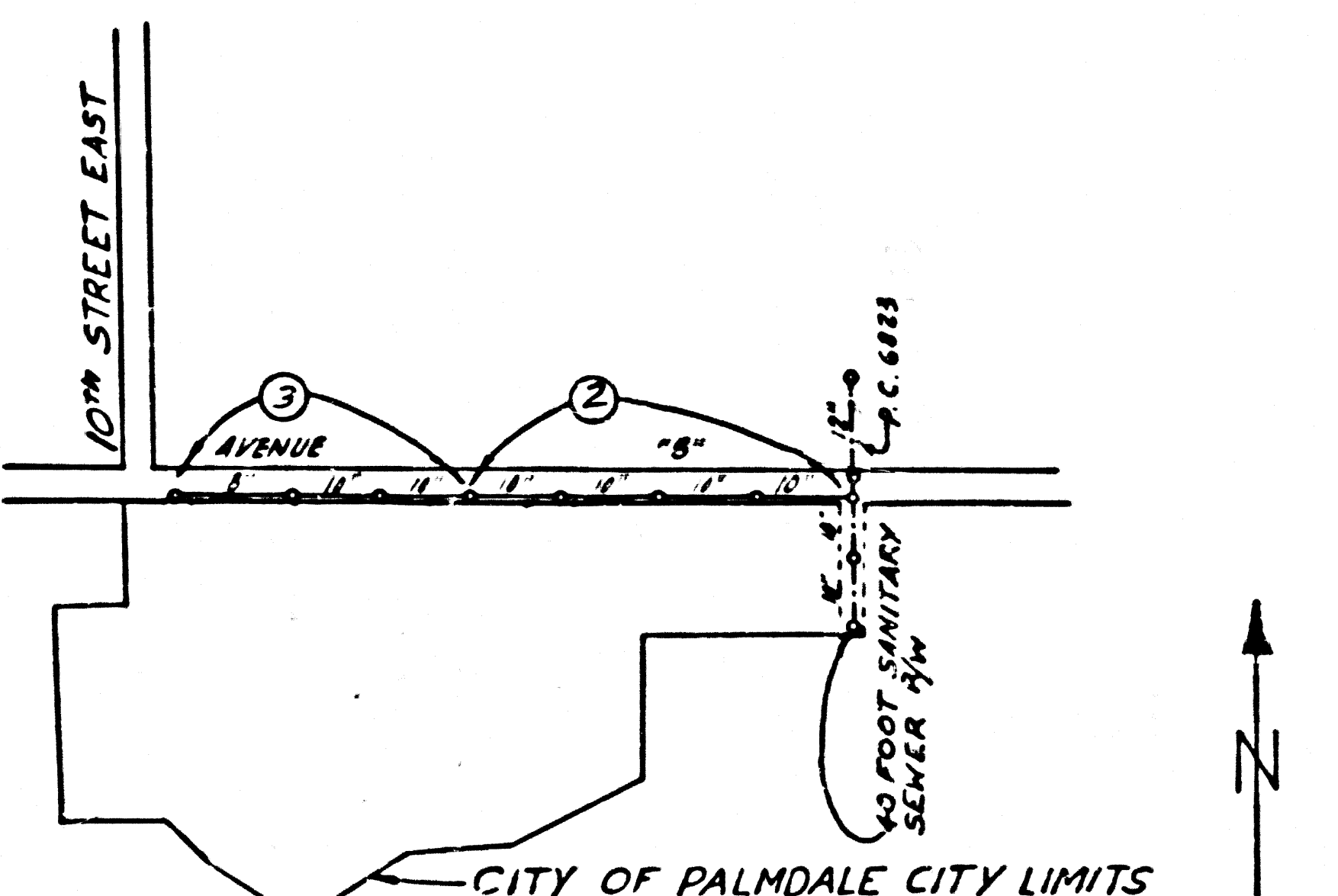


B.M. 5L 454 ELEV. 2756.494  
 BRONZE DISK SET IN CONC.  
 6" BELOW GRD 883' 46" SPRR.  
 MAINLINE ± 31' 36" AVE. S. 195' 1/2"  
 P.P. # 5156.52 H (MKD 427 1935)

**NOTE BY THE PRIVATE ENGINEER**  
 The existence and approximate location of underground utilities or structures shown on the plans were determined by a search of the available public records. To the best of our knowledge there are no existing underground utilities or structures except as shown on these plans. The contractor is required to take due precautionary measures to protect the utilities or structures shown and any other utilities or structures at the site. It shall be the contractor's responsibility to notify the owners of the utilities or structures concerned before starting work.



SCALE 1"=600'  
 NOTE: CIRCLED NUMBERS INDICATE PAGE NUMBERS

P.C. 7263  
**INDEX MAP**  
 AVENUE "S"

**PALMDALE BLDG. DIST. NO. 8.01**

PROFILE ALIGNMENT AND GRADE OF **P.C. 7263**  
**SANITARY SEWERS** PAGE 1

TO BE CONSTRUCTED IN  
**AVENUE "S"** 38167

PRIVATE CONTRACT NO. 7263

W.S. 65  
 2 SHEETS, 3 PAGES

SCALE: VERT. 1"=4' HORIZ. 1"=40' December, 1965

PREPARED IN THE OFFICES OF  
**FRED N. RABE ENGINEERING INC.**  
 1843 EAST BELMONT AVENUE, PLEASANTON, CALIFORNIA  
 BY Fred N. Rabe  
 REG. C. E. NO. 12158

FOR LEGEND SEE PLAN NO. S-1

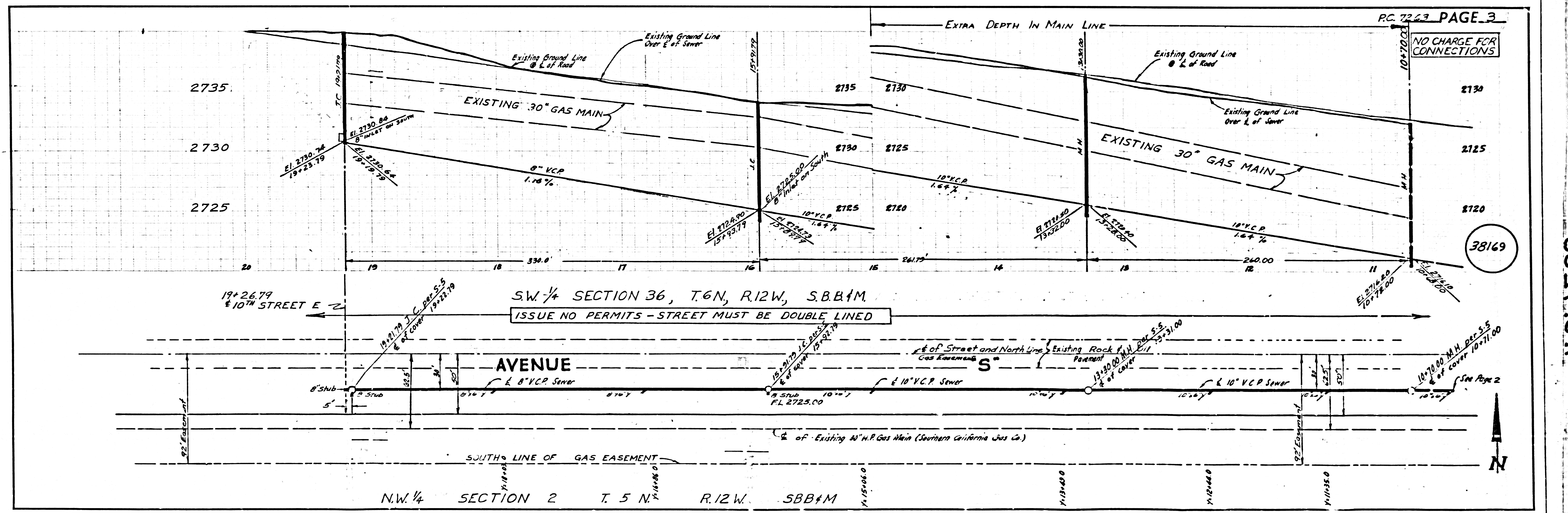
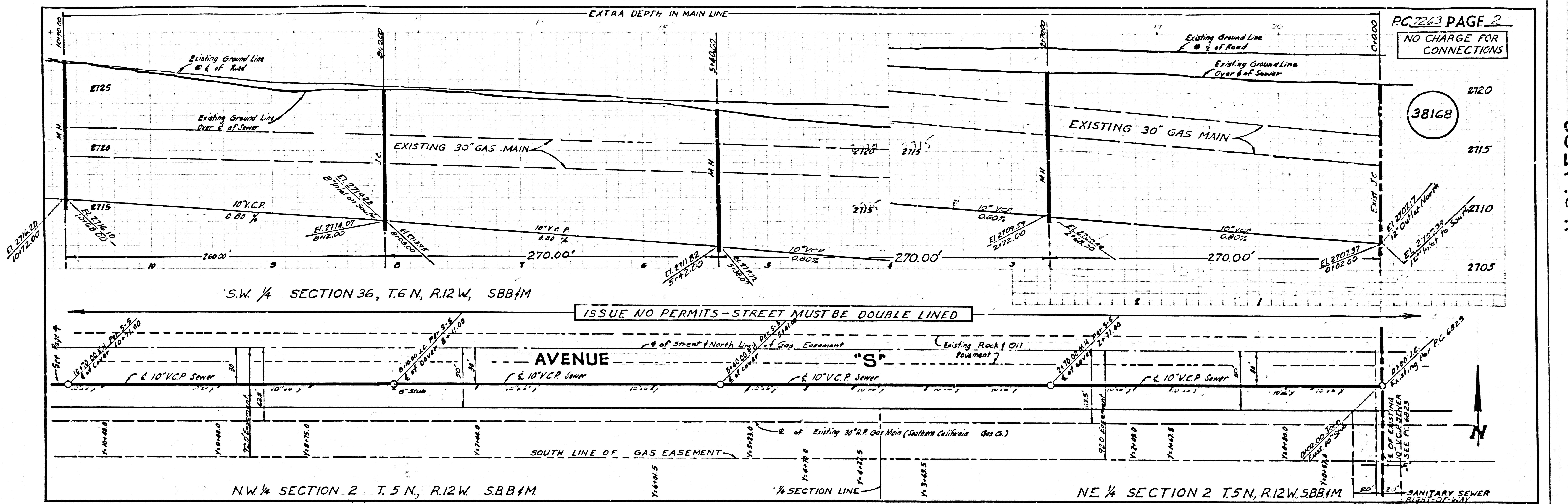
- NOTES:**
1. PROVIDE STAKES ON THE PROPERTY LINE OR PROPERTY LINES PRODUCED AT RIGHT ANGLES TO THE SEWER LINE AT THE CENTER LINE OF EACH MANHOLE.
  2. NO REPRESENTATIVES OF THE CITY ENGINEER WILL SURVEY OR LAY OUT ANY PORTION OF THE WORK.
  3. THE PRIVATE ENGINEER SHALL FURNISH THE CITY ENGINEER WITH GRADE SHEETS AND STATIONING FOR ALL HOUSE LATERALS AND Y BRANCHES AND SHALL PROVIDE STAKES FOR THEM AT THEIR PROPER LOCATIONS WITH SEATING PLAINLY MARKED. ALL HOUSE LATERALS SHALL BE CONSTRUCTED TO A STRAIGHT ALIGNMENT AT RIGHT ANGLES FROM THE MAIN LINE SEWER EXCEPT AS SHOWN ON THE PLANS. HOUSE LATERALS FROM CHIMNEYS SHALL NOT HAVE AN ANGLE OF LESS THAN 45° WITH THE MAIN LINE SEWER. ANY CHANGE IN ALIGNMENT SHALL BE REQUESTED IN WRITING BY THE PRIVATE ENGINEER.
  4. THE PRIVATE ENGINEER SHALL FURNISH THE HOUSE LATERAL SEWER AS THE PROPERTY LINE SHOW THE TOP OF CURB SEPARATION FOR EACH HOUSE LATERAL ON THE GRADE SHEET.
  5. NO REVISIONS SHALL BE MADE IN THESE PLANS WITHOUT THE APPROVAL OF THE CITY ENGINEER.
  6. THE CONTRACTOR SHALL NOTIFY THE CONSTRUCTION DIVISION BY TELEPHONE, NUMBER 9-4747, EXT. 3848, AT LEAST TWENTY FOUR HOURS BEFORE STARTING ANY WORK UNDER THIS CONTRACT.
  7. MANHOLES SHALL BE BRICK SEWER STRUCTURES PER S-3. PRECAST CONCRETE MANHOLES PER S-4 OR S-5 MAY BE USED AS AN ALTERNATE IN LOCATIONS APPROVED BY THE CITY ENGINEER.
  8. USE STANDARD MANHOLE FRAME AND COVER, S-4F EXCEPT AS NOTED.
  9. MANHOLES SHALL BE UNGRADED UNLESS SHOWN TO BE OTHERWISE ABOVE FINISH GRADE.
  10. USE EXTRA STRENGTH PIPE. ALL PIPE IS STANDARD DEPTH EXCEPT AS NOTED.
  11. USE CRIBBED MORTAR OR MECHANICAL COMPRESSION JOINTS FOR ALL V.C.P. JOINTS PER SPECS., SECS. 30 & 40.
  12. WHERE OVER GRADE WATER IS ENCOUNTERED DURING THE CONSTRUCTION OF THE SEWERS, THE V.C.P. JOINTS SHALL BE OF JOINT COMPOUND PER SPECS., SECS. 30 & 40, OR MECHANICAL COMPRESSION JOINTS PER SPECS., SEC. 30.
  13. IF A POWER POLE IS WITHIN THREE FEET OF THE SEWER, THE SEWER SHALL BE DEEPER, PER S-2.3. CASE II, TWO FEET ON EITHER SIDE FROM THE POINT OF INTERFERENCE.
  14. IF DURING THE COURSE OF CONSTRUCTION IT IS DETERMINED THAT THERE IS LESS THAN FOUR FEET OF COVER OVER THE TOP OF A MAIN LINE OR HOUSE LATERAL V.C.P. SEWER WHICH IS NOT INDICATED ON THE PLANS, THE PIPE SHALL BE DEEPER PER S-2.3 UNLESS OTHERWISE APPROVED BY THE CITY ENGINEER.
  15. HOUSE LATERALS TO BE CONSTRUCTED WITH SHIFTS AT PROPERTY LINE. . . . FEET BELOW CURB GRADE EXCEPT AS NOTED.
  16. SURFACE ALL TRENCHES WITHIN PAVED AREAS TO MEET L.A. COUNTY ROAD DEPT. OR CALIFORNIA STATE HIGHWAY REQUIREMENTS BY ACCORDANCE WITH PERMITS.
  17. FOR ALLOWABLE LEAKAGE TEST USE FORMULA NO. . . . SPECS., SEC. 54.
  18. All state and local trench safety orders will be rigidly enforced.

NO CONNECTIONS FOR THE DISPOSAL OF INDUSTRIAL WASTES SHALL BE MADE TO SEWERS SHOWN ON THESE DRAWINGS, WITHOUT WRITTEN PERMISSION FROM THE CHIEF ENGINEER AND GENERAL MANAGER OF THE COUNTY SANITATION DISTRICTS.

**COLLECT CHARGES AS INDICATED**  
Arthur W. Kander

**NOTES:**  
 GRADES TO WHICH THE IMPROVEMENT IS TO BE CONSTRUCTED ARE SHOWN ON PLANS AND PROFILES. GRADE POINTS FOR TOP OF CURBS, CENTER LINE OF STREETS, OR CENTER LINE OF ALLEYS ARE SHOWN BY CIRCLES ON PROFILE. AT ALL POINTS BETWEEN DESIGNATED POINTS THE GRADE SHALL BE ESTABLISHED SO AS TO CONFORM TO A STRAIGHT LINE DRAWN BETWEEN SAID DESIGNATED POINTS. ELEVATIONS ARE IN FEET ABOVE M. C. S. SEA LEVEL, DATE OF 1929.  
 THIS DRAWING AND THE DATA HEREON ARE HEREBY MADE A PART OF THE SPECIFICATIONS.  
 WORK SHALL BE CONSTRUCTED ACCORDING TO STANDARD SPECIFICATIONS DATED MAY 22, 1962 ON FILE IN THE OFFICE OF THE CITY ENGINEER AND SHALL BE PROSECUTED ONLY IN THE PRESENCE OF THE CITY ENGINEER.  
 BEFORE WORK CAN BE STARTED, THE CONTRACTOR MUST OBTAIN A PERMIT TO OCCUPY IN CITY STREETS FROM THE L.A. COUNTY ROAD DEPT., DISTRICT OFFICE NO. 7, AND PAY A FEE TO THE CITY OF PALMDALE, 3346 N. 14TH STREET, 91301 ON THE SANITARY SEWERS. REGIONAL OFFICE, SUFFICIENT TO COVER THE COST OF CONSTRUCTION INSPECTION AND RECORD PLANS.  
 APPROVAL OF THIS PLAN BY THE CITY OF PALMDALE DOES NOT CONSTITUTE A REPRESENTATION AS TO THE ACCURACY OR THE LOCATION OF OR THE EXISTENCE OR NON-EXISTENCE OF ANY UNDERGROUND UTILITY PIPE OR STRUCTURE WITHIN THE LIMITS OF THE PROJECT. THIS NOTE APPLIES TO ALL PAGES.  
 IF WORK IS TO BE DONE IN A CITY HIGHWAY, A PERMIT MUST BE OBTAINED FROM THE STATE OF CALIFORNIA, DIVISION OF HIGHWAYS, 320 SOUTH SPRING STREET, LOS ANGELES, CALIFORNIA.

**CITY OF PALMDALE, CALIFORNIA**  
 JOHN A. LAMBIE, CITY ENGINEER I. D. PARKHURST, CHIEF ENGINEER  
 CO. SAN DIST. NO. 30  
 APPROVED BY: R. S. Kander APPROVED BY: I. D. Parkhurst  
 REGIONAL ENGINEER OFFICE ENGINEER  
 SUBMITTED BY: Fred N. Rabe  
 CHECKED BY: R. S. Kander 12/16/65  
 REG. C. E. NO. 15466



PC 7263

PC 7263