

WEST HOLLYWOOD BUILDING DISTRICT No. 9

P.C. 7265 PAGE 1  
J.N. 0650.10  
WEST HOLLYWOOD RELIEF SEWERS  
PRIVATE CONTRACT NO. 7265

PROFILE, ALIGNMENT AND GRADE OF  
SANITARY SEWERS  
TO BE CONSTRUCTED IN  
RUGBY DRIVE  
AND OTHER RIGHTS OF WAY

37487

2 SHEETS, 4 PAGES

SCALE: HORIZ. 1" = 40'  
VERT. 1" = 4'

APRIL 1965

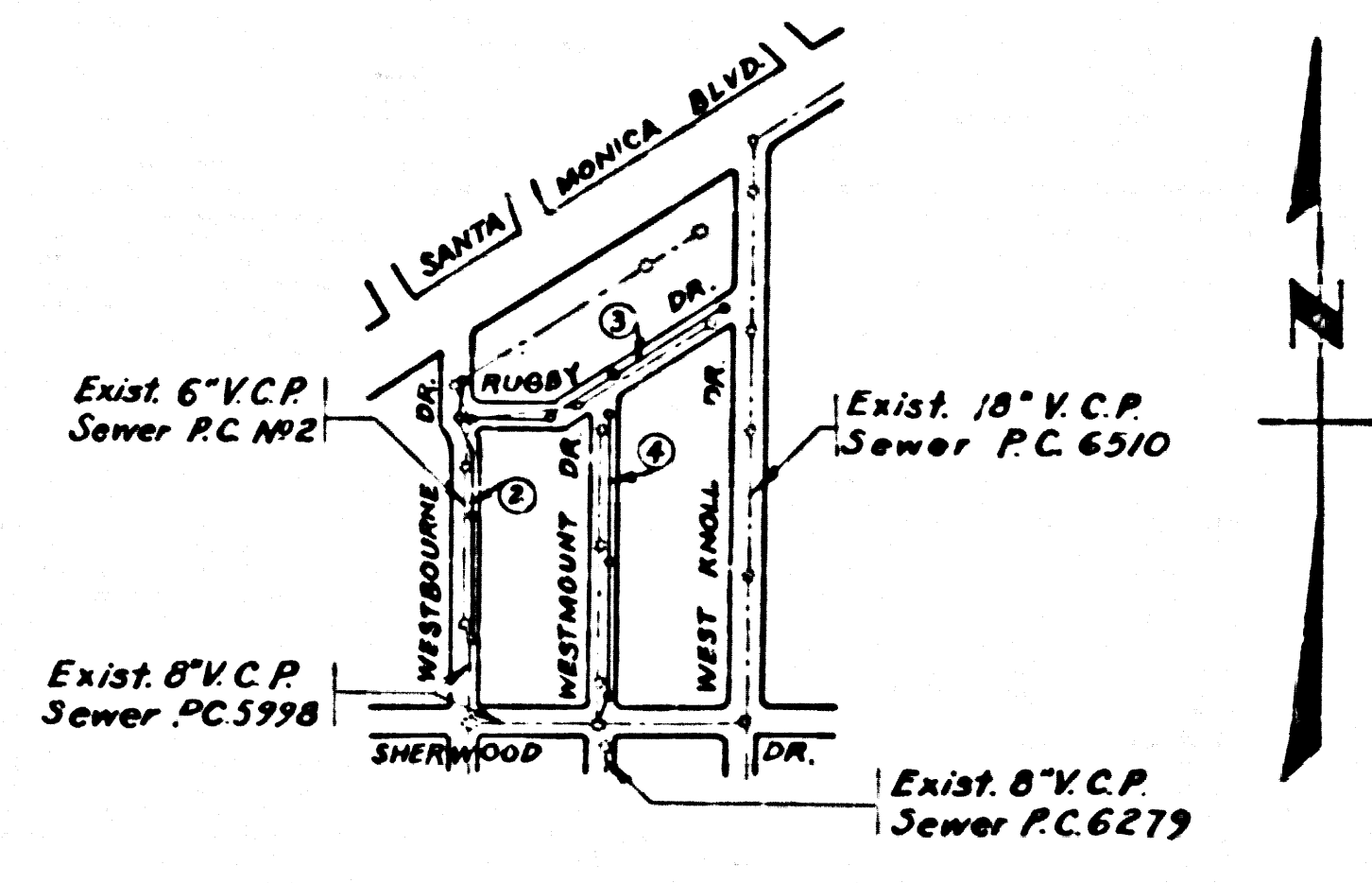
COUNTY OF LOS ANGELES, CALIFORNIA

JOHN A. LAMBIE COUNTY ENGINEER  
APPROVED BY *[Signature]* CHIEF ENGINEER OF COUNTY SANITATION DISTRICT NO. 4  
RECOMMENDED BY *[Signature]* ASSISTANT SANITATION ENGINEER  
DESIGNED BY *[Signature]* SEC. C. E. NO. 15536

NOTE: WORK SHALL BE CONSTRUCTED ACCORDING TO STANDARD SPECIFICATIONS DATED MAY 25, 1964, ON FILE IN THE OFFICE OF THE COUNTY ENGINEER AND SHALL BE PROSECUTED ONLY IN THE PRESENCE OF THE COUNTY ENGINEER. GRADES TO WHICH THIS IMPROVEMENT IS TO BE CONSTRUCTED ARE SHOWN ON PLANS AND PROFILES. GRADE POINTS FOR TOP OF CURB, CENTER LINE OF STREET OR CENTER LINE OF ALLEY ARE SHOWN BY CIRCLES ON PROFILES AT ALL POINTS BETWEEN DESIGNATED POINTS. THE GRADE SHALL BE ESTABLISHED SO AS TO CONFORM TO A STRAIGHT LINE DRAWN BETWEEN SAID DESIGNATED POINTS. ELEVATIONS ARE IN FEET ABOVE U.S.C. & G.S. SEA LEVEL DATUM OF 1929. SHUT PRICES FOR ADDITIONAL WORK WHICH MAY BE REQUIRED BUT WHICH CANNOT BE ASCERTAINED IN ADVANCE, SHALL BE SUBMITTED IN THE PROPOSAL. THIS DRAWING AND THE DATA HEREON ARE HEREBY MADE A PART OF THE SPECIFICATIONS.

LAYOUT	CHIEN	April, 1965	UNDERGROUND	<i>[Signature]</i>	12-30-1965
TRACED	CHIEN	April, 1965	BENCH MARKS	<i>[Signature]</i>	2-24-1965
CHECKED	HOWARD	April, 1965	MAINTENANCE	<i>[Signature]</i>	4-26-1965
F.B. 2708			INSPECTOR		1965
A.B. 4330			RECORD PLANS		1965

B.M. # 2 ELEV. 182.18  
F.B. 2708-118 Westbourne Dr. & Sherwood Dr. N.E. Cor. Bt. Spk. in curb at N. end C.R.



INDEX MAP  
RUGBY DRIVE P.C. NO. 7265  
Scale 1" = 600'

NO CHARGE FOR CONNECTIONS  
*Thomas E. Howard*

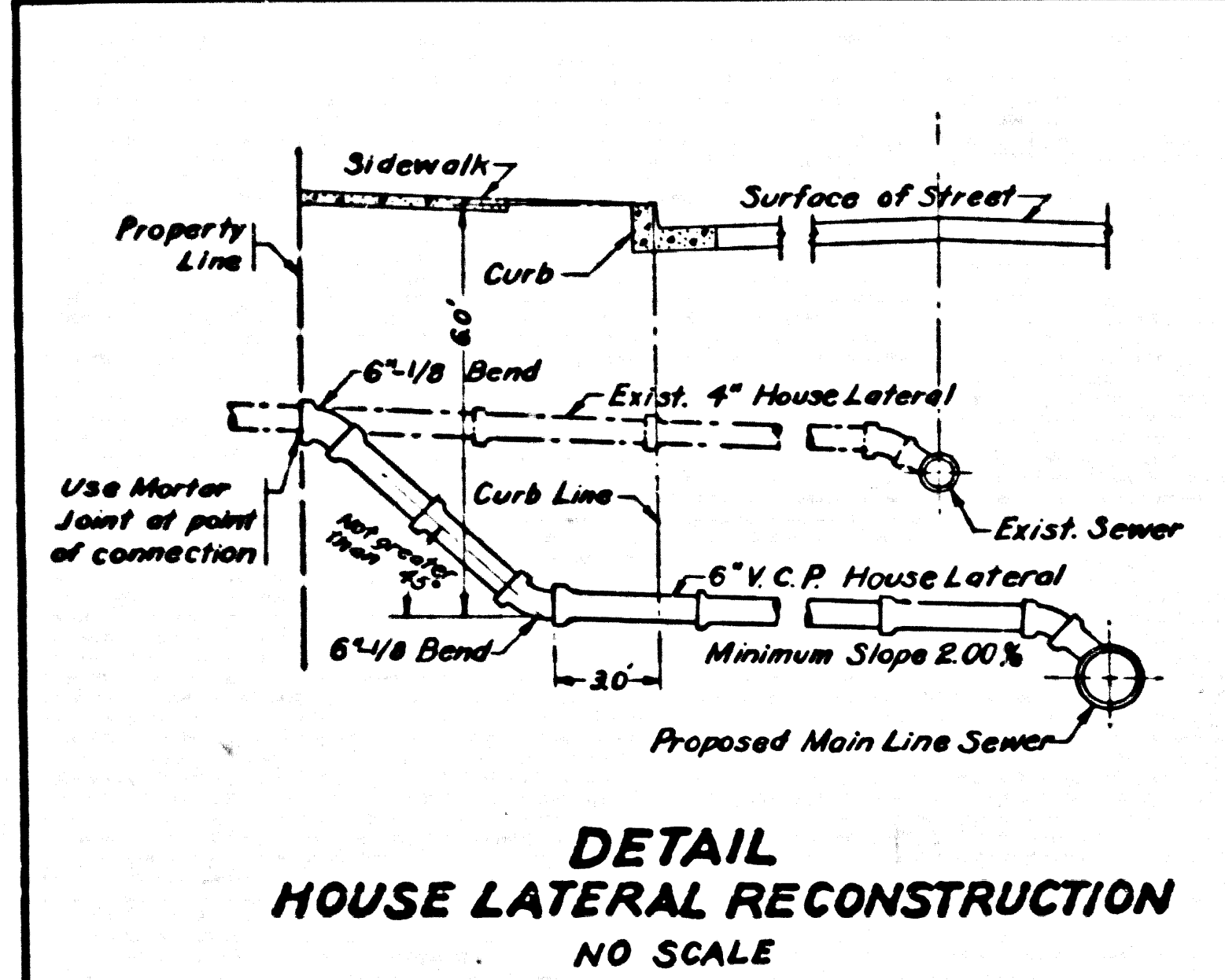
USE EXTRA STRENGTH PIPE. ALL PIPE IS STANDARD DEPTH, EXCEPT AS NOTED.  
USE MECHANICAL COMPRESSION JOINTS FOR ALL VITRIFIED CLAY PIPE SEWERS PER SPEC. 6 & 48 OF STD. SPECS., EXCEPT AS NOTED.  
ALL STRUCTURES SHALL BE BRICK MANHOLE, EXCEPT AS NOTED. AS PER PLAN NO. 8-1.  
USE STANDARD MANHOLE FRAMES AND COVERS, EXCEPT AS NOTED. AS PER PLAN NO. 8-1.  
SEE FORMULA AND SPEC. OF SPECIFICATIONS TO COUNTY ALLOWABLE GRADES.  
CONSTRUCT HOUSE LATERALS WITH INVERTS AT FLOOR FINISH LINE 6 FEET BELOW CURB GRADE, OR GRADE OF CENTER LINE OF STREET, EXCEPT AS NOTED.  
HOUSES IN CIRCLES AT ENDS OF HOUSE LATERALS INDICATE TOP OF CURB GRADE, OR GRADE OF CENTER LINE OF STREET.  
FIGURES IN CIRCLES AT ENDS OF HOUSE LATERALS INDICATE HOUSE LATERALS SHALL BE CONSTRUCTED WITH 1/4" DIA. PER FOOT TO PROPERTY LINE.  
WORDS IN CIRCLES AT ENDS OF HOUSE LATERALS INDICATE IT'S SHALL BE LAMB HORIZONTAL AND HOUSE LATERALS SHALL BE CONSTRUCTED WITH 1/4" DIA. PER FOOT TO PROPERTY LINE.  
ALL HOUSE LATERALS SHALL BE CONSTRUCTED IN A STRAIGHT ALIGNMENT AT RIGHT ANGLES FROM THE MAIN LINE SEWER EXCEPT AS SHOWN ON THE PLANS. HOUSE LATERALS FROM CHIMNEYS SHALL NOT HAVE AN ANGLE OF LESS THAN 45 DEGREES WITH THE MAIN LINE SEWER.  
THE CONTRACTOR SHALL NOTIFY THE CONSTRUCTION DIVISION BY TELEPHONE MADISON 9-6747, EXT. 8151 AT LEAST 24 HOURS BEFORE STARTING ANY WORK UNDER THIS CONTRACT.  
CONFORMANCE WITH STATE HIGHWAYS SHALL CONFORM WITH STATE HIGHWAY PERMIT AND THE CONTRACTOR SHALL PAY ALL COSTS BY CONSTRUCTION PROVISIONS.  
ALL STATE AND LOCAL TRENCH SAFETY ORDERS WILL BE RIGIDLY ENFORCED.  
RESURFACING SCHEDULE: RESURFACE TRENCH WITHIN PAVED AREA WITH PAVEMENT ROCK AND OR 2 INCHES IN THICKNESS OR 4 INCHES OF AGGREGATE-BASE MATERIALS, EXCEPT AS NOTED BELOW.

PAGE NO.	STREET	STATION LIMITS	TYPE OF RESURFACING
3	RUGBY DRIVE	1+15.00 TO 7+00.00	4 INCHES ASPHALTIC CONCRETE ON 5" OF AGGREGATE BASE.
4	SHERWOOD DRIVE	0+93.00 TO 1+23.00	5 INCHES ASPHALTIC CONCRETE.

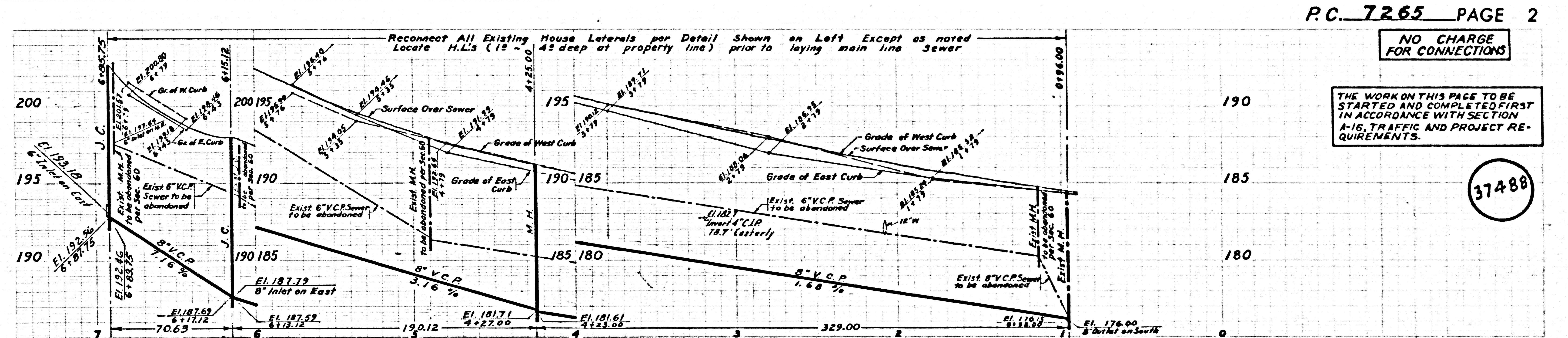
NO REVISIONS SHALL BE MADE ON THESE PLANS WITHOUT THE APPROVAL OF THE COUNTY ENGINEER.  
ALL CONCRETE CROSS CUTTERS, CURBS, GUTTERS, PAVEMENT, AND DRIVEWAYS SHALL BE TYPED OR ACED PER LOS ANGELES COUNTY ROAD DEPARTMENT REQUIREMENTS.  
THE FOLLOWING LATEST REVISED STANDARD PLANS ON FILE IN THE OFFICE OF COUNTY ENGINEER SHALL APPLY IN THE CONSTRUCTION OF THIS PROJECT.

- LEGEND . . . . . S-1
- MINIMUM EXCAVATION SAFETY REQUIREMENTS . . . . . S-2
- BRICK MANHOLE . . . . . S-3
- MANHOLE FRAME AND COVER . . . . . S-18
- MANHOLE STEP . . . . . S-17
- BEDDING FOR SEWER PIPE . . . . . S-21
- SPECIAL SUPPORT AND PROTECTION . . . . . S-22
- CRADLING AND INCASMENT . . . . . S-23
- STANDARD WYE SUPPORT . . . . . S-26
- STOPPER . . . . . S-30

House laterals may be connected during construction of main line sewer.  
FLOW IN EXISTING SEWERS (LATERALS) SHALL BE MAINTAINED DURING CONSTRUCTION.  
APPROVAL OF THIS PLAN BY THE COUNTY OF LOS ANGELES DOES NOT CONSTITUTE A REPRESENTATION AS TO THE ACCURACY OF THE LOCATION OF OR THE EXISTENCE OR NON-EXISTENCE OF ANY UNDERGROUND UTILITY PIPE, OR STRUCTURE WITHIN THE LIMITS OF THIS PROJECT.  
NO CONNECTIONS FOR INDUSTRIAL WASTES SHALL BE MADE TO SEWER SYSTEM ON THESE DRAWINGS WITHOUT WRITTEN PERMISSION FROM THE CHIEF ENGINEER AND GENERAL MANAGER OF THE COUNTY SANITATION DISTRICT NO. 4.



DETAIL HOUSE LATERAL RECONSTRUCTION  
NO SCALE

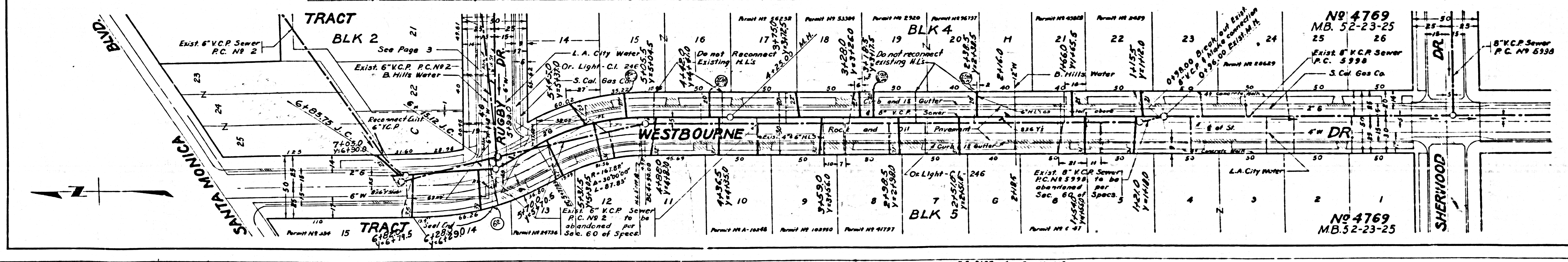


P.C. 7265 PAGE 2

NO CHARGE FOR CONNECTIONS

THE WORK ON THIS PAGE TO BE STARTED AND COMPLETED FIRST IN ACCORDANCE WITH SECTION A-16, TRAFFIC AND PROJECT REQUIREMENTS.

37488



NO 4769 MB. 52-23-25  
Exist. 6" V.C.P. Sewer P.C. 5998  
S. Cal. Gas Co.

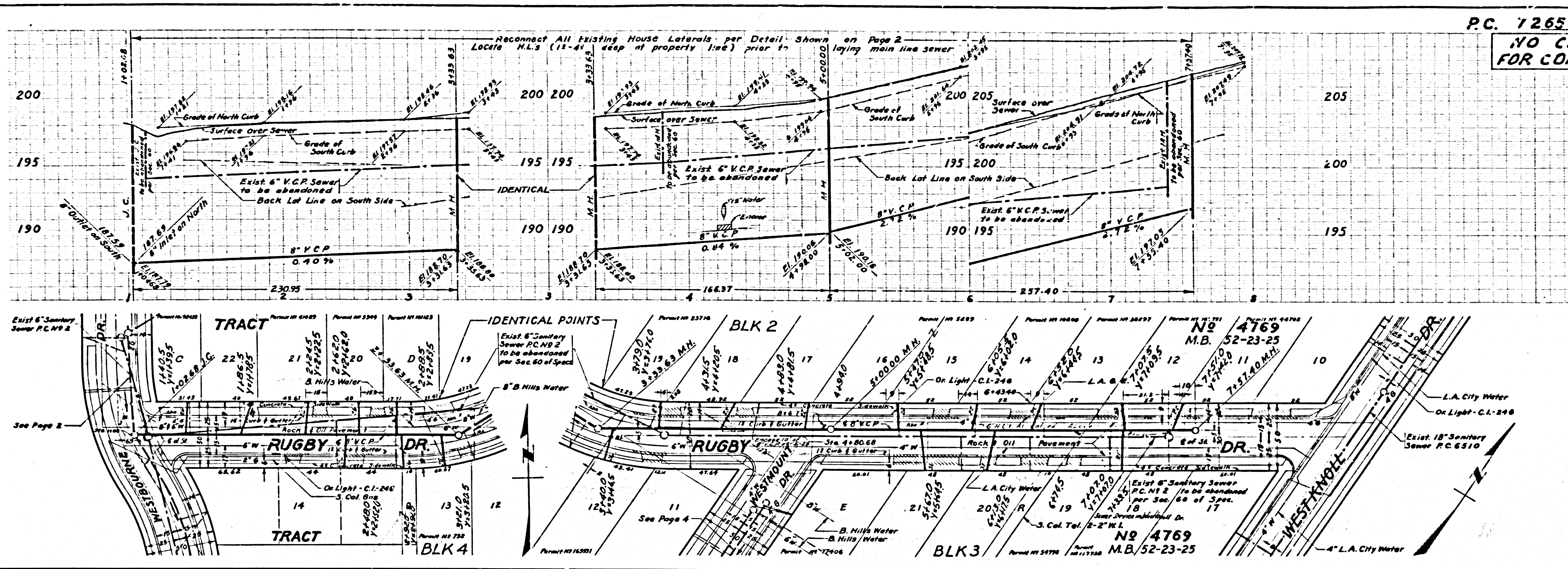
NO 4769 MB. 52-23-25  
Exist. 8" V.C.P. Sewer P.C. 5998  
S. Cal. Gas Co.

F.B. 2197 - 8 - 19 200-202  
F.B. 2708 - 8 - 19 27-30  
F.B. 2708 - 8 - 19 117-123



NO CHARGE FOR CONNECTIONS

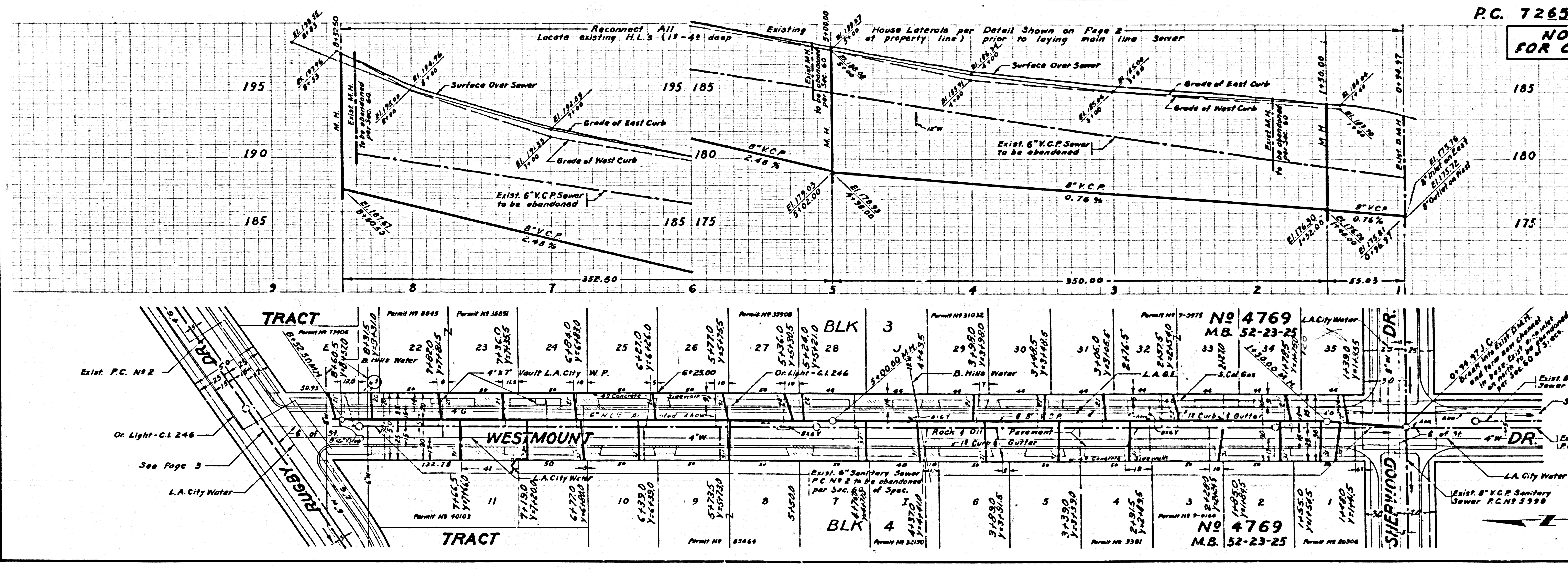
37489



P.L. 2197 - 8 - 19, 200, 204, 191  
P.B. 2708 - Top - 11 - 116  
P.B. 2708 - 1 Sec - 19, 181 - 180

NO CHARGE FOR CONNECTIONS

37490



P.L. 2197 - 8 - 19, 200 - 204  
P.B. 2708 - Top - 11 - 116  
P.B. 2708 - 1 Sec - 19, 181 - 180