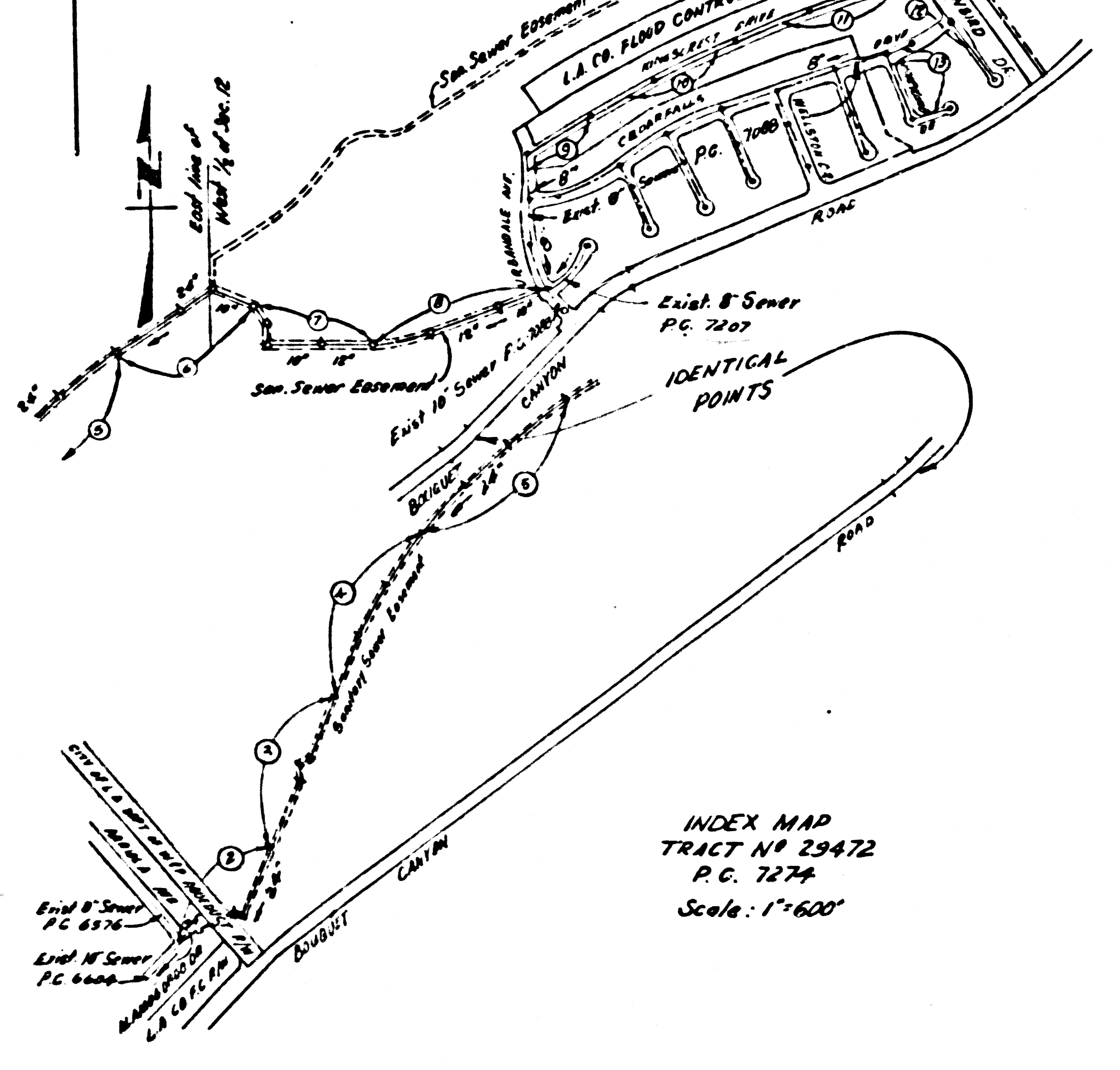


B.M. 5L 1741 ELEV. 1343.390  
 ALBMS V-8 F.O. FLOOD CONTROL DIV.  
 FLUSH STRT. SLY. N. BOUBOULT CANYON  
 ROAD AND 175 FT. NLY. OF FLUM CANYON R.R.  
 ROAD 144-00800  
 NEWHALL QUAD. 19 G-3



**NOTE: BASIS OF BEARINGS**  
 a) The basis of bearing for Sewers Wly. of the J.C. at Sta. 32+91.41, Page 6, Sec. 6 is the N.E. bury of Tract No. 26881 which has a bearing of N 53° 13' 12" W per the R/W Map prepared for the Amer. Tel. & Tel. Co. by Pacific Tel. & Tel. Co. by Paulford & Assoc., Los Angeles, Sheet 1 of 11.  
 b) The basis of bearings for Sewers Ely. of the above mentioned J.C. shown on Sta. 0+29.86 on page 6, Sec. A, is the bearing of N 0° 30' 47" W on the rest line of Section 7, T.4N. R.15N per C.S.O. 438-3 and T.C. No. 29471, M.C. 735, 64-66.  
 c) The bearing of N 53° 03' 13" E as shown on the S. of the Tel. easement, page 6, Sec. B, is N 52° 46' 46" E, per the basis of bearings of note (b) above.

INDEX MAP  
 TRACT NO. 29472  
 P.C. 7274  
 Scale: 1"=600'

**REVISIONS:**  
 N-15-65  
 11/23/65  
 Changed C.I.P. with mech. joints to ductile iron pipe, thickness class 6, with "Tyton Joints" and resprayed outside.  
 11/23/65  
 Changed M.H.'s of sta. 11+45.44 and Sta. 12+21.82 from brick to 24" V.C.P. to precast concrete per S-5 as modified.  
 APPROVED: *[Signature]*  
 ENGINEER IN CHARGE

**DOUBLE SCALE  
 NEWHALL BLDG. DIST. NO. 8.2**

PROFILE ALIGNMENT AND GRADE OF  
**SANITARY SEWERS** PAGE 1  
 CONSTRUCTED IN  
**TRACT No 29472 37858**

PRIVATE CONTRACT NO. 7274  
 W.S. 62  
 7 SHEETS, 13 PAGES  
 SCALE: VERT. 1"=4' HORIZ. 1"=40' APRIL, 1965  
 PREPARED IN THE OFFICES OF  
**M<sup>rs</sup> INTIRE & QUIROS INC.**  
*[Signature]*  
 REG. C. E. 65-14227  
 FOR LEGEND SEE PLAN NO. S-1

- NOTES:**
- PROVIDE STAKES ON THE PROPERTY LINE OR PROPERTY LINES PRODUCED AT RIGHT ANGLES TO THE SEWER LINE AT THE CENTER LINE OF EACH MANHOLE.
  - NO REPRESENTATIVE OF THE COUNTY ENGINEER WILL SURVEY OR LAY OUT ANY PORTION OF THE WORK.
  - THE PRIVATE ENGINEER SHALL FURNISH THE COUNTY ENGINEER WITH GRADE SHEETS AND STATIONING FOR ALL HOUSE LATERALS AND Y BRANCHES AND SHALL PROVIDE STAKES FOR THEM AT THEIR PROPER LOCATIONS WITH STATIONING PLAINLY MARKED. ALL HOUSE LATERALS SHALL BE CONSTRUCTED IN A STRAIGHT ALIGNMENT AT RIGHT ANGLES FROM THE MAIN LINE SEWERS EXCEPT AS INDICATED ON THE PLANS. HOUSE LATERALS FROM CHIMNEYS SHALL NOT HAVE AN ANGLE OF LESS THAN 45° WITH THE MAIN LINE SEWER. ANY CHANGE IN ALIGNMENT SHALL BE REQUESTED BY WRITING AT THE PRIVATE ENGINEER.
  - THE PRIVATE ENGINEER SHALL FURNISH THE HOUSE LATERAL DEPTH AT THE PROPERTY LINE BELOW THE TOP OF CURB ELEVATION FOR EACH HOUSE LATERAL ON THE GRADE SHEET.
  - NO REVISIONS SHALL BE MADE IN THESE PLANS WITHOUT THE APPROVAL OF THE COUNTY ENGINEER.
  - THE CONTRACTOR SHALL NOTIFY THE CONSTRUCTION DIVISION BY TELEPHONE, MADISON 9-4747, EXT. 8336, AT LEAST TWENTY-FOUR HOURS BEFORE THE COMMENCEMENT OF WORK UNDER THIS CONTRACT.
  - MANHOLES SHALL BE BRICK SEWER STRUCTURES PER S-3, PRECAST CONCRETE MANHOLES PER S-4 OR S-5 MAY BE USED AS AN ALTERNATE IN LOCATIONS APPROVED BY THE COUNTY ENGINEER. *[Signature]*
  - USE STANDARD MANHOLE FRAMES AND COVERS, S-16, EXCEPT AS NOTED.
  - MANHOLE TOPS IN UNIMPROVED BRIGHTS OF WAY TO BE SIX INCHES ABOVE FINISHED GRADE.
  - USE EXTRA STRENGTH PIPE, ALL PIPE IS 24" MINIMUM DEPTH EXCEPT AS NOTED.
  - USE MECHANICAL COMPRESSION JOINTS FOR ALL V.C.P. JOINTS PER SPECS., SECS. 34 & 49.
  - IF A POWER POLE IS WITHIN THREE FEET OF THE SEWER, THE SEWER SHALL BE ENCASED, PER S-22, TWO FEET ON EITHER SIDE FROM THE POINT OF INTERFERENCE.
  - IF DURING THE COURSE OF CONSTRUCTION IT IS DETERMINED THAT THERE IS LESS THAN FOUR FEET OF COVER OVER THE TOP OF A MAIN LINE OR HOUSE LATERAL V.C.P. SEWER WHICH IS NOT INDICATED ON THE PLANS, THE PIPE SHALL BE ENCASED PER S-22, UNLESS OTHERWISE APPROVED BY THE COUNTY ENGINEER.
  - HOUSE LATERALS TO BE CONSTRUCTED WITH INVERTS AT PROPERTY LINE... FEET BELOW CURB GRADE.
  - BACKFILL ALL TRENCHES WITHIN PAVED AREAS TO MEET L.A. COUNTY ROAD BURY, OR CALIFORNIA STATE HIGHWAY REQUIREMENTS IN ACCORDANCE WITH PERMITS.
  - FOR ALLOWABLE LEAKAGE TEST USE FORMULA NO. 1, SPECS., SEC. 54.
  - ALL STATE AND LOCAL TRENCH SAFETY ORDERS SHALL BE RIGIDLY ENFORCED.

**NOTE:** THE CONTRACTOR MUST NOTIFY THE CITY OF LOS ANGELES, DEPT. OF WATER & POWER 24 HOURS PRIOR TO CONSTRUCTION IN THE AQUEDUCT EASEMENT. (CALL MR. R. V. PHILLIPS - AREA CHIEF 213-481-6101, AQUEDUCT DIVISION).  
**NOTE:** THE CONTRACTOR MUST NOTIFY THE PACIFIC TEL. & TEL. CO. AT LEAST 24 HOURS PRIOR TO EXCAVATING IN THE VICINITY OF THE COAXIAL CABLE. CALL MR. LEO SORRENTINO, AT THE NEWHALL OFFICE - TEL. AREA CODE 805; 259-5850

**COLLECT CHARGES AS INDICATED**  
*[Signature]* 6-2-65

NO CONNECTIONS FOR THE DISPOSAL OF INDUSTRIAL WASTES SHALL BE MADE TO SEWERS SHOWN ON THESE DRAWINGS WITHOUT WRITTEN PERMISSION FROM THE CHIEF ENGINEER AND GENERAL MANAGER OF THE COUNTY SANITATION DISTRICT.

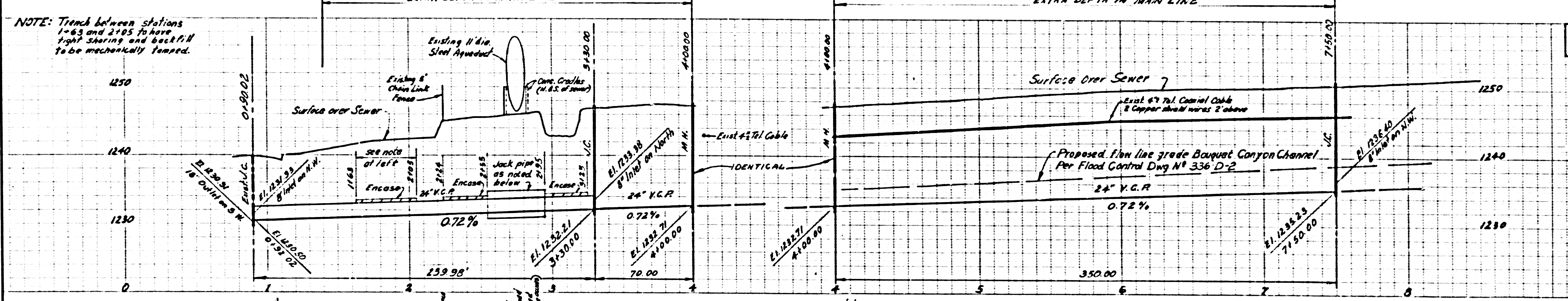
**COUNTY OF LOS ANGELES, CALIFORNIA**  
 JOHN A. LAMBIE, COUNTY ENGINEER  
 APPROVED BY: *[Signature]*  
 ASSISTANT SANITATION ENGINEER

J. D. PARKHURST, CHIEF ENGINEER  
 APPROVED BY: *[Signature]*  
 OFFICE ENGINEER

CHECKED BY: *[Signature]*  
 REG. C.E. NO. 2446

J.N. 0365.10

**NOTE:** Trench between stations 1+63 and 2+05 to have light shading and backfill to be mechanically tamped.

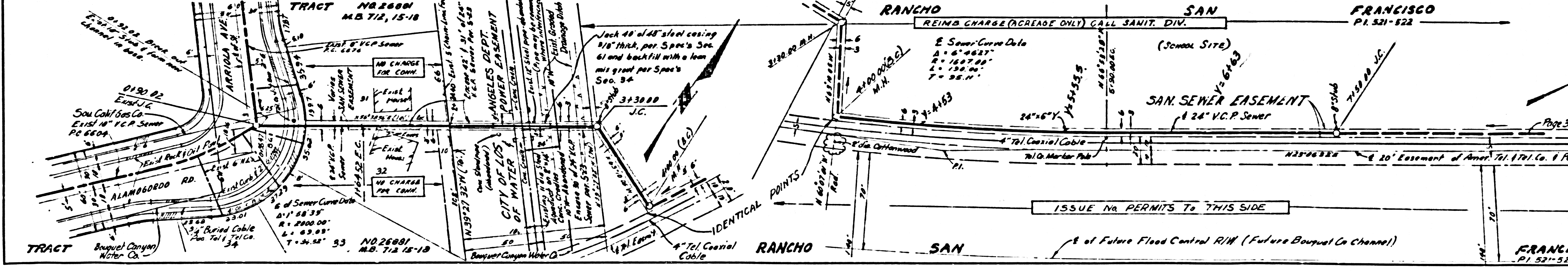


P. C. 7274 PAGE 2

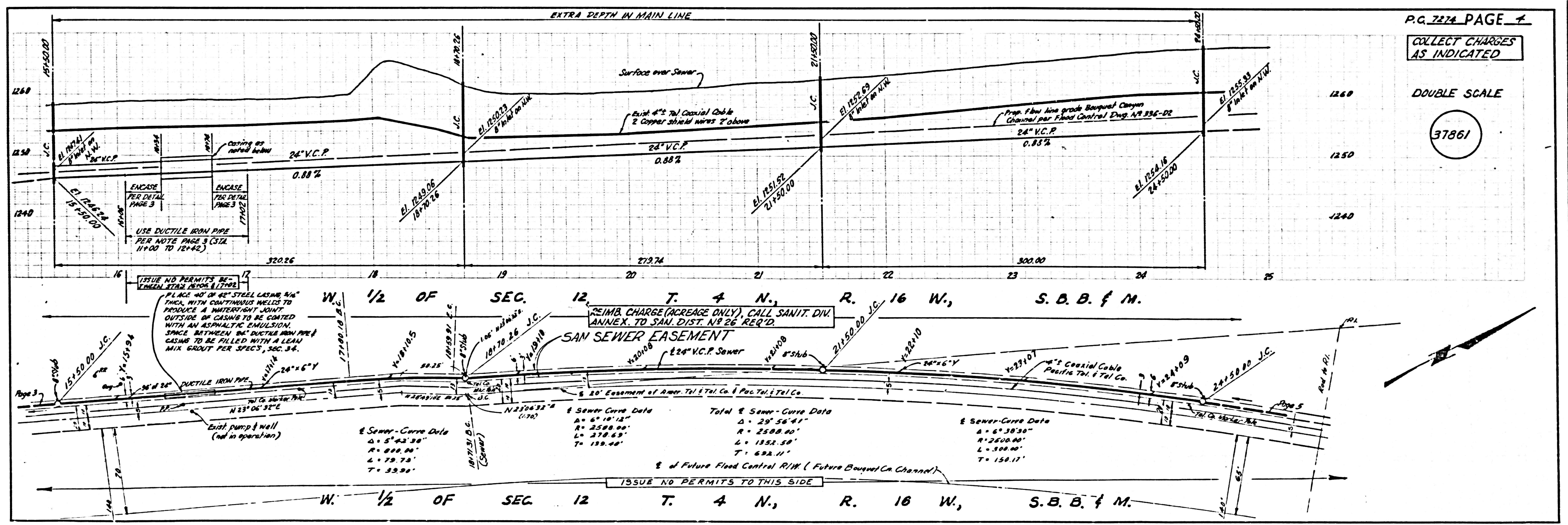
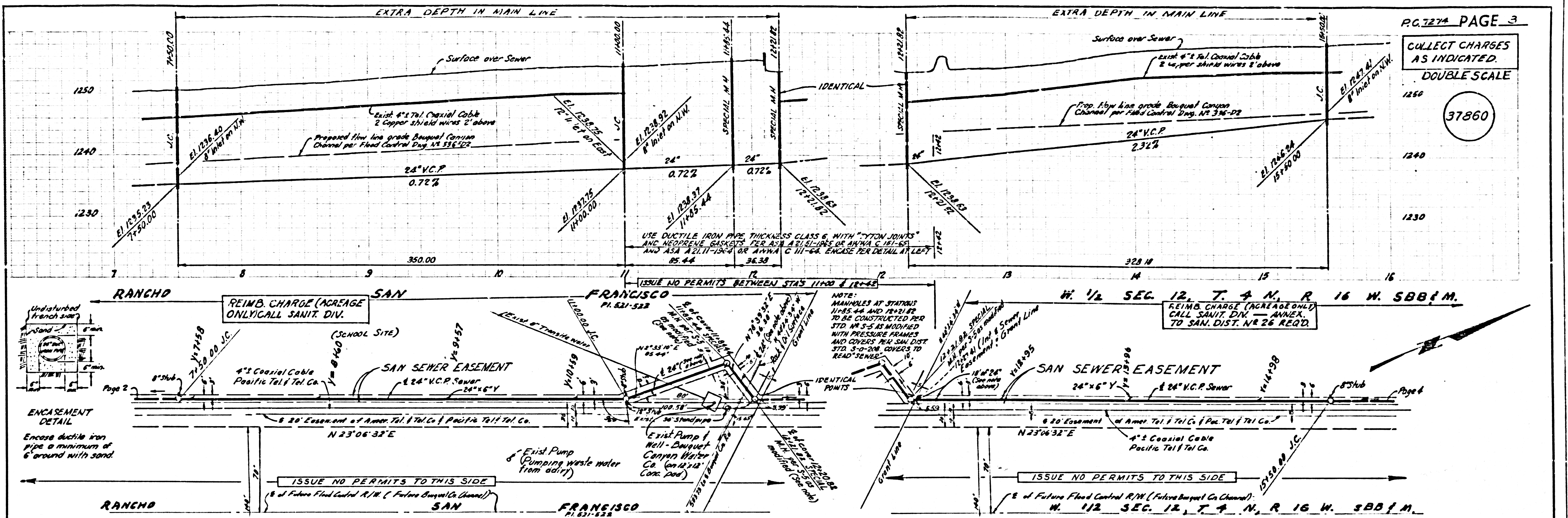
**COLLECT CHARGES AS INDICATED**

DOUBLE SCALE

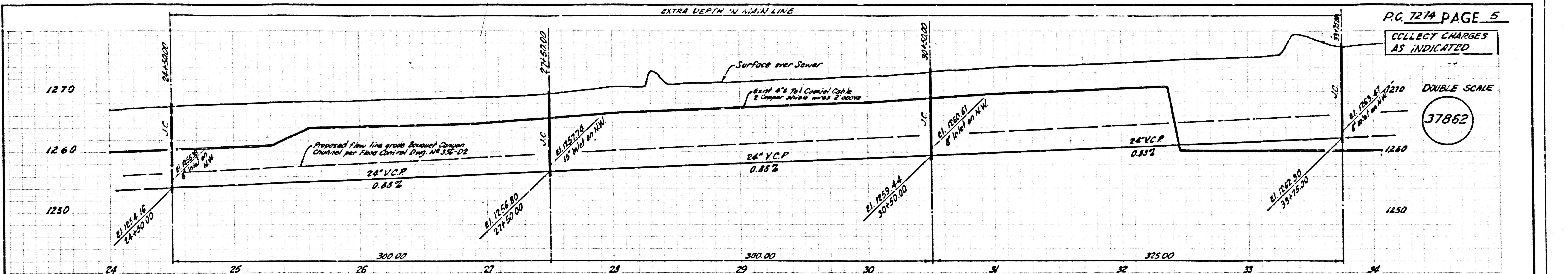
37859



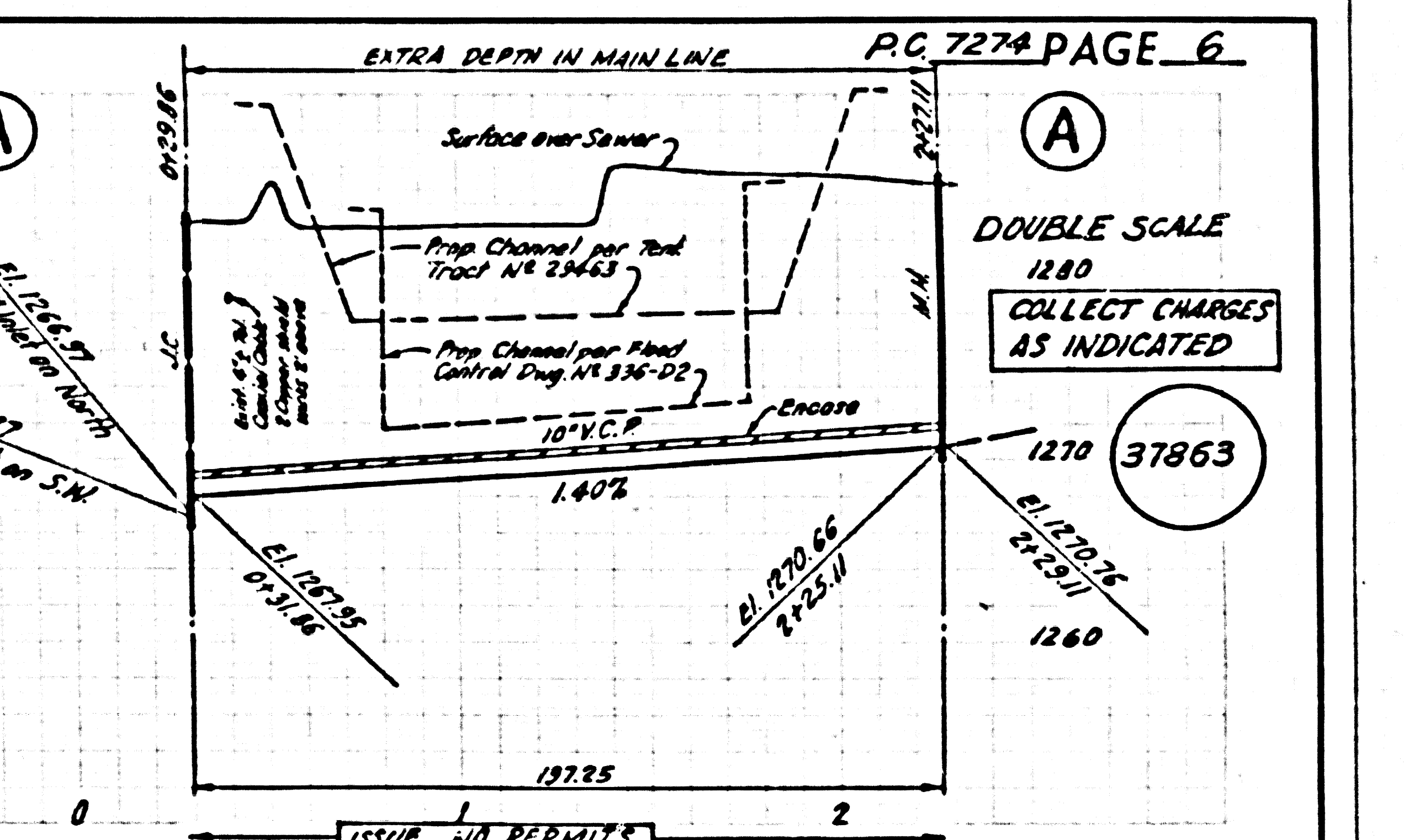
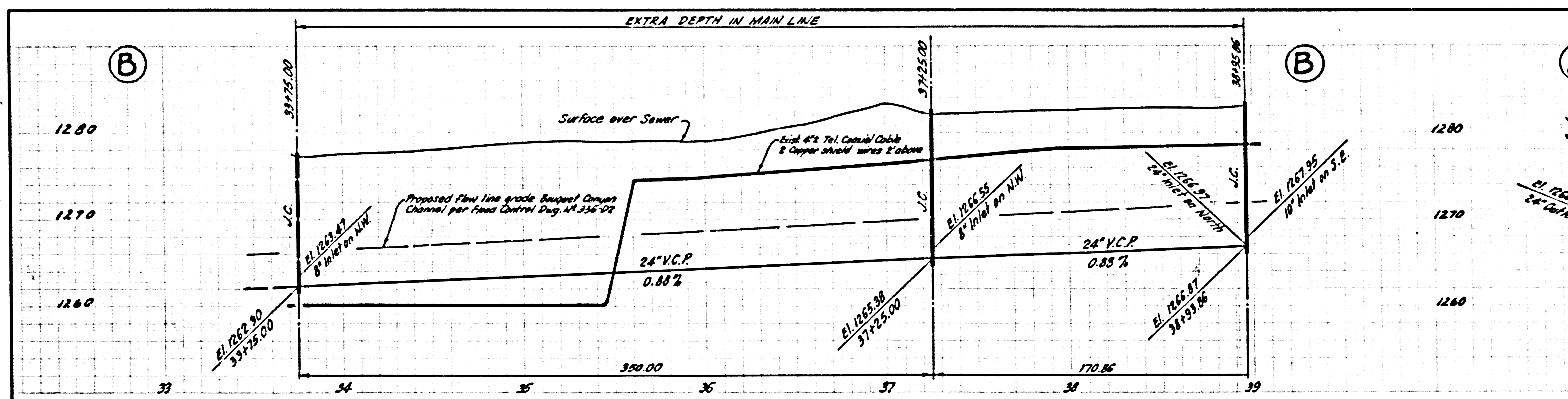
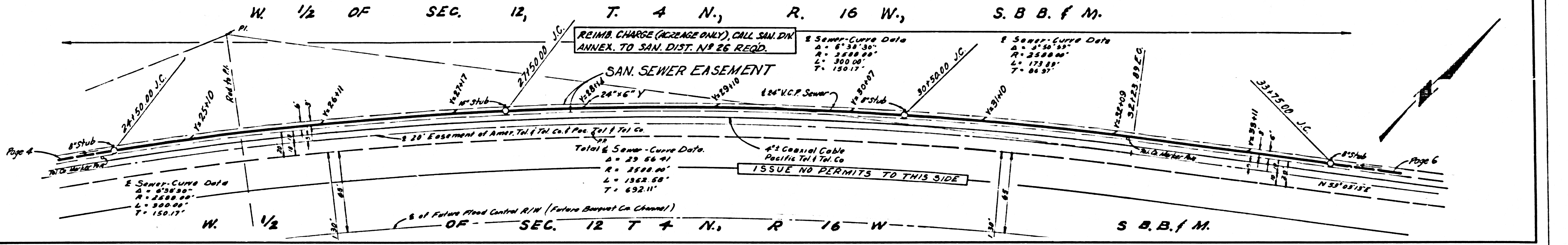




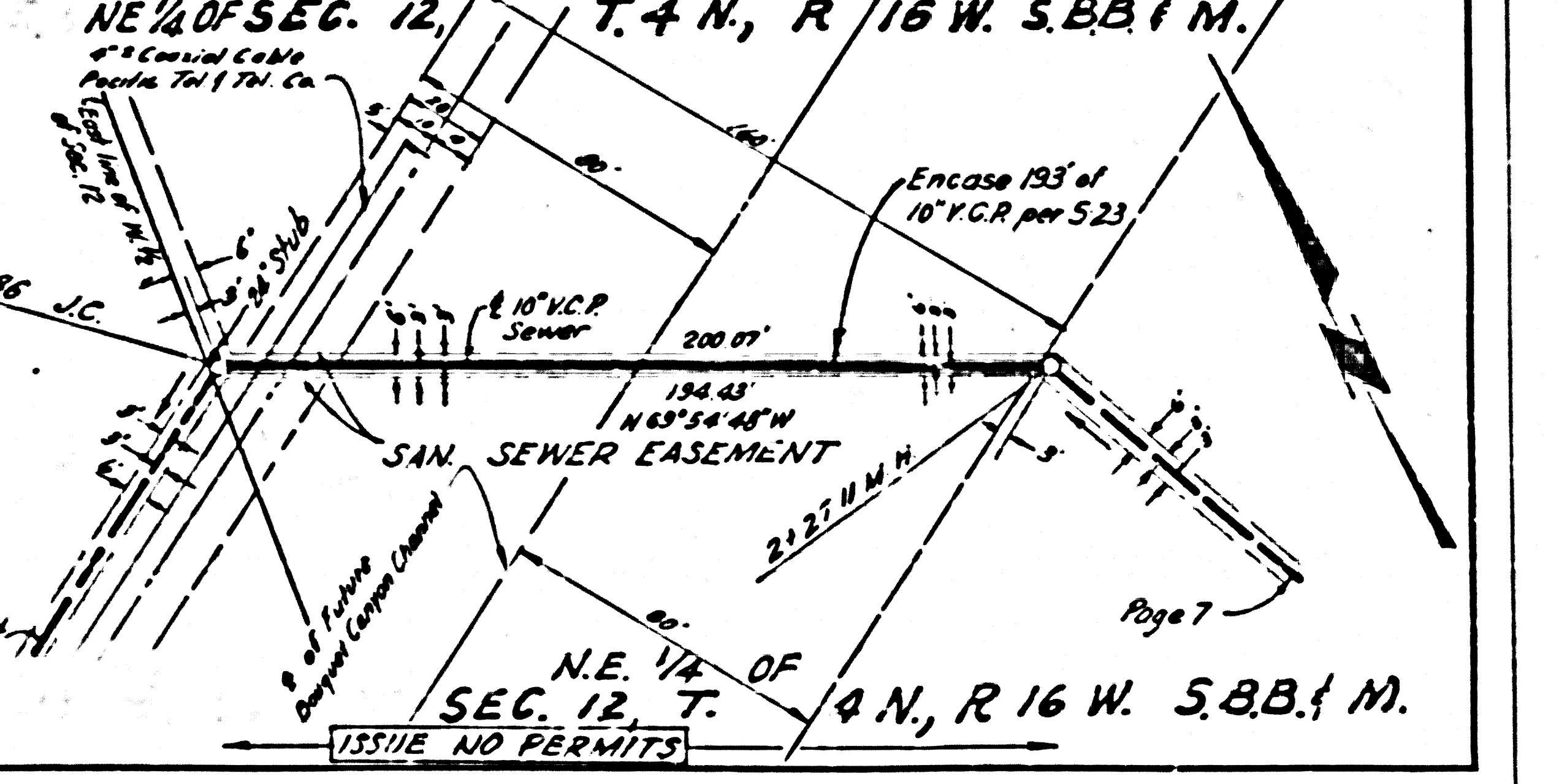
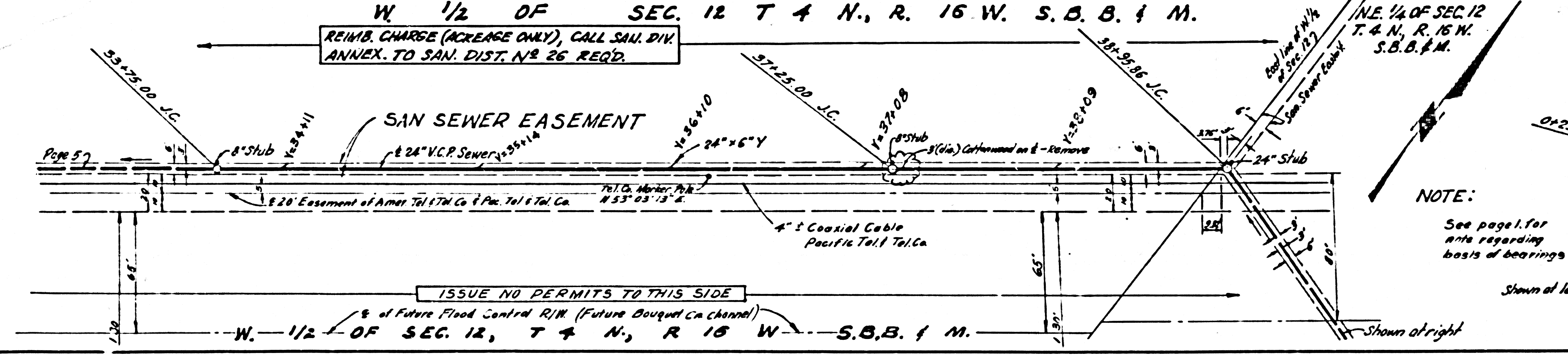




PG. 7274 PAGE 5  
 COLLECT CHARGES AS INDICATED  
 DOUBLE SCALE  
 37862



PG. 7274 PAGE 6  
 DOUBLE SCALE  
 COLLECT CHARGES AS INDICATED  
 37863



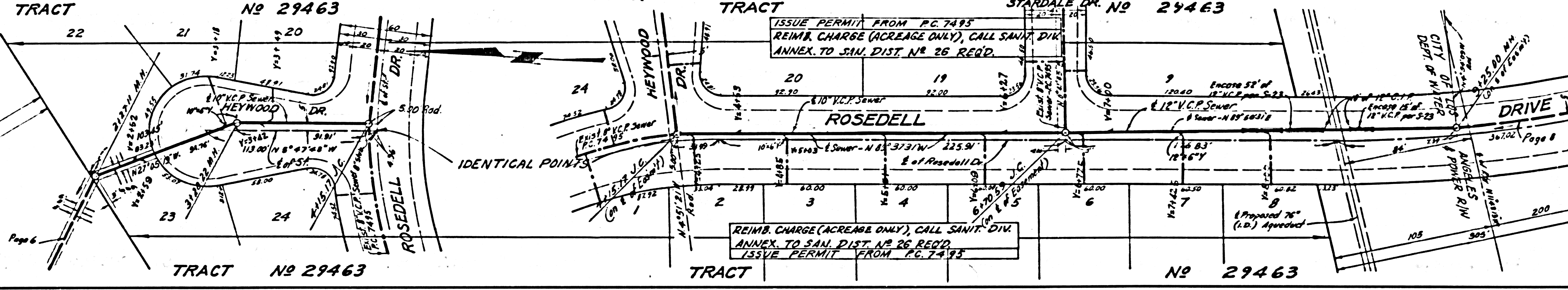
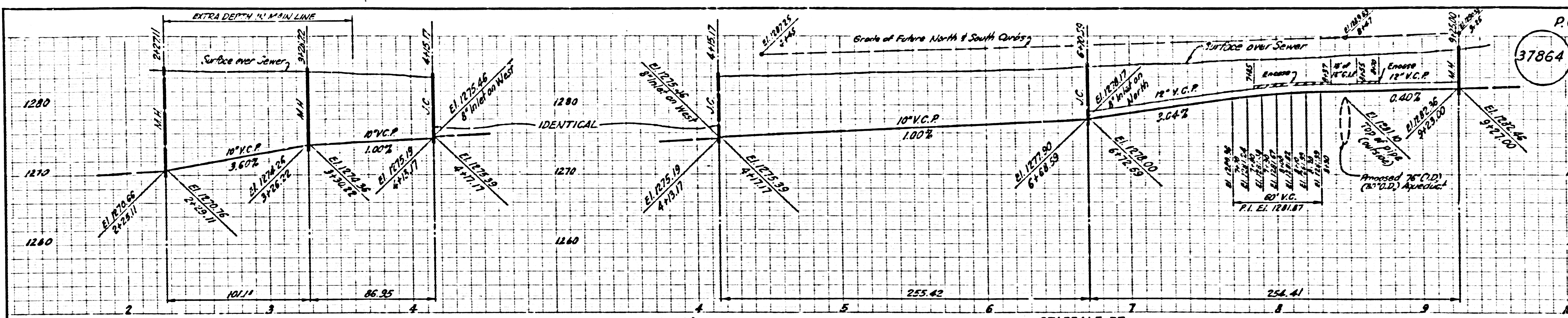
NOTE:  
 See page 1 for info regarding basis of bearings.



COLLECT CHARGES AS INDICATED

37864

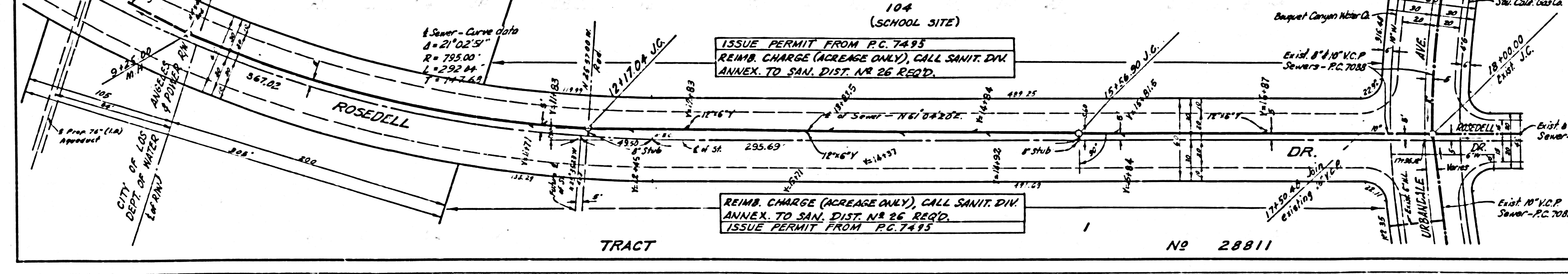
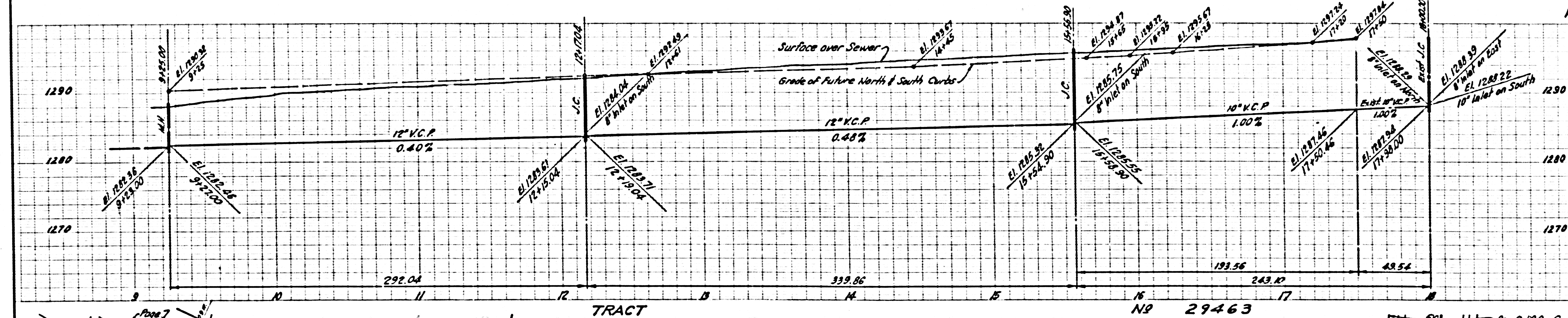
DOUBLE SCALE



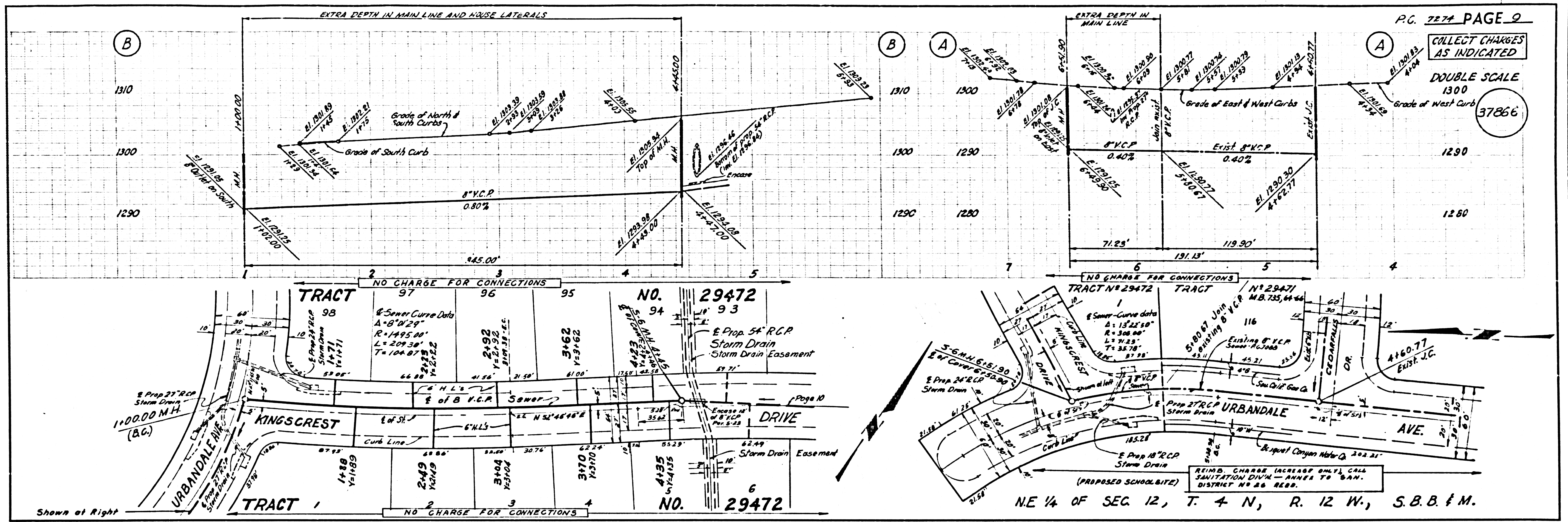
COLLECT CHARGES AS INDICATED

37865

DOUBLE SCALE

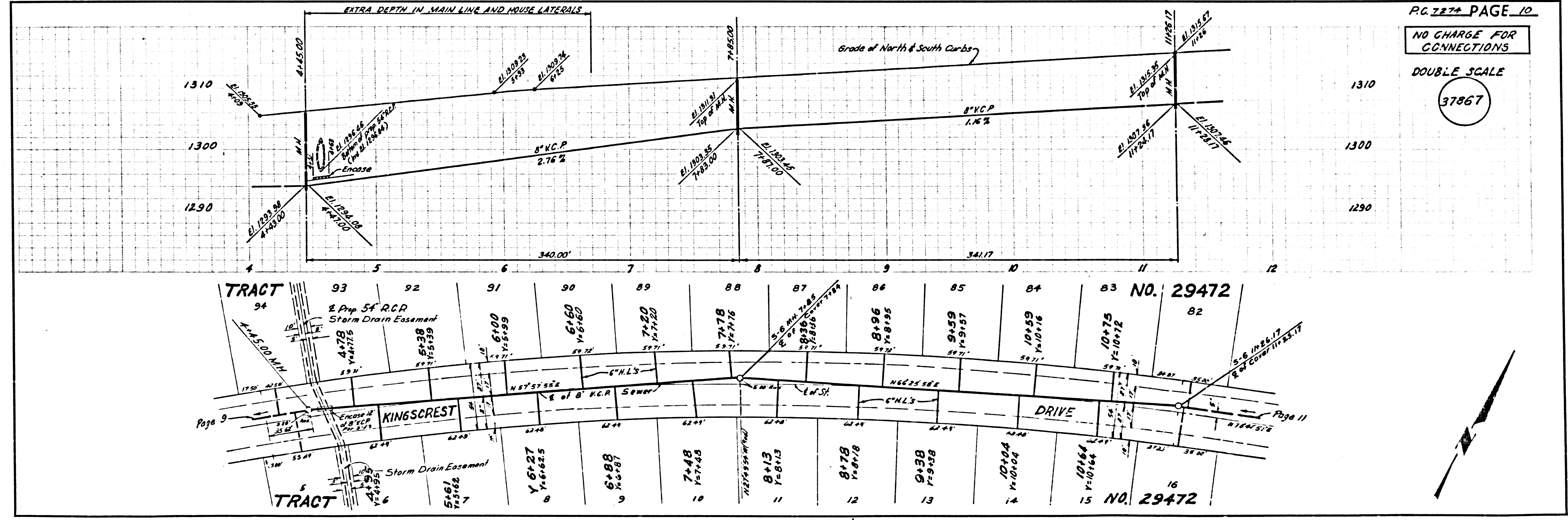






COLLECT CHARGES AS INDICATED

DOUBLE SCALE 1300  
37866



NO CHARGE FOR CONNECTIONS

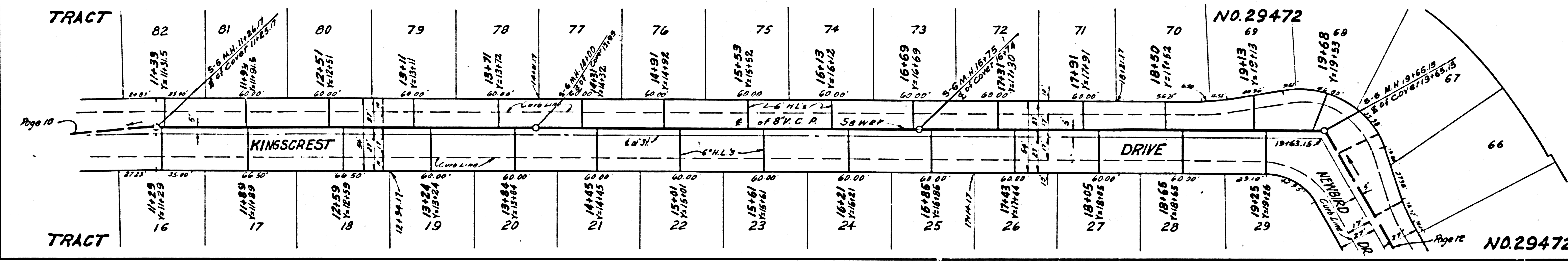
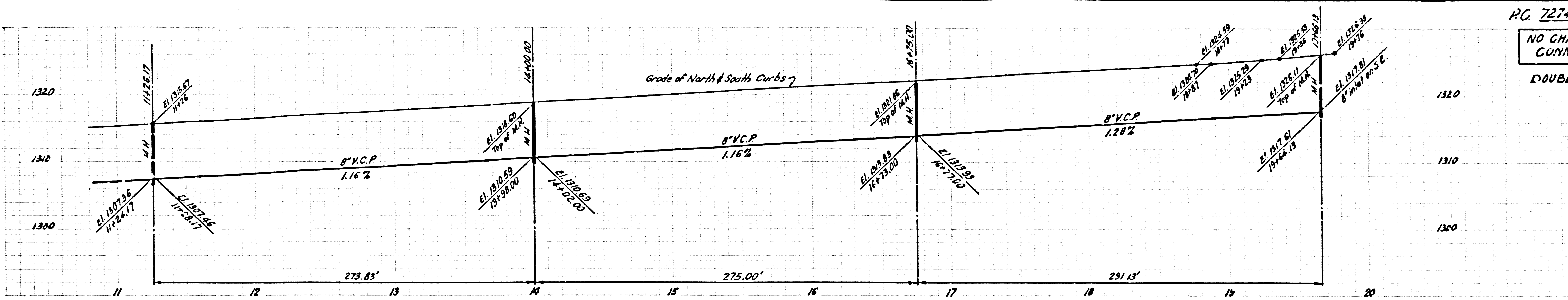
DOUBLE SCALE 1300  
37867



NO CHARGE FOR CONNECTIONS

DOUBLE SCALE

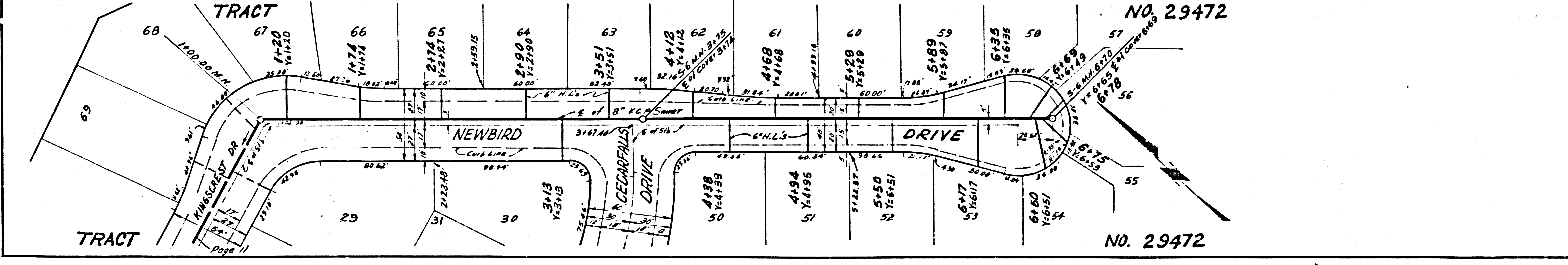
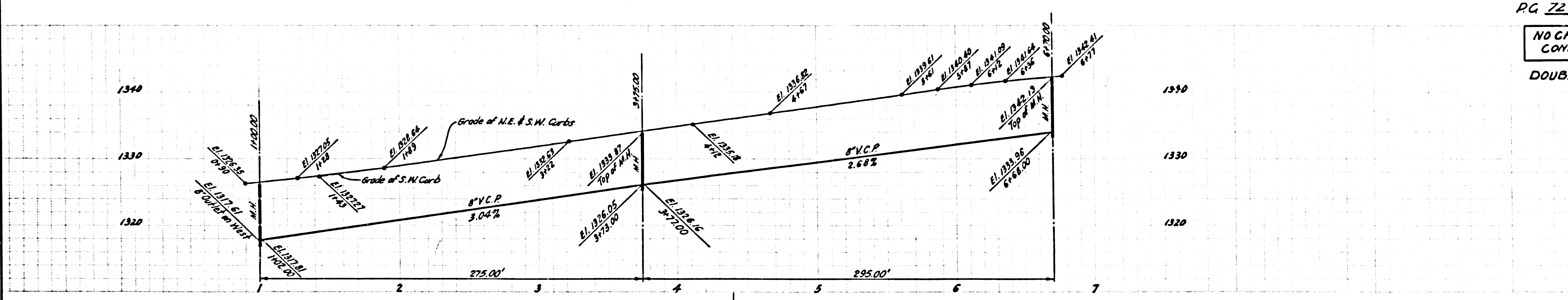
37868



NO CHARGE FOR CONNECTIONS

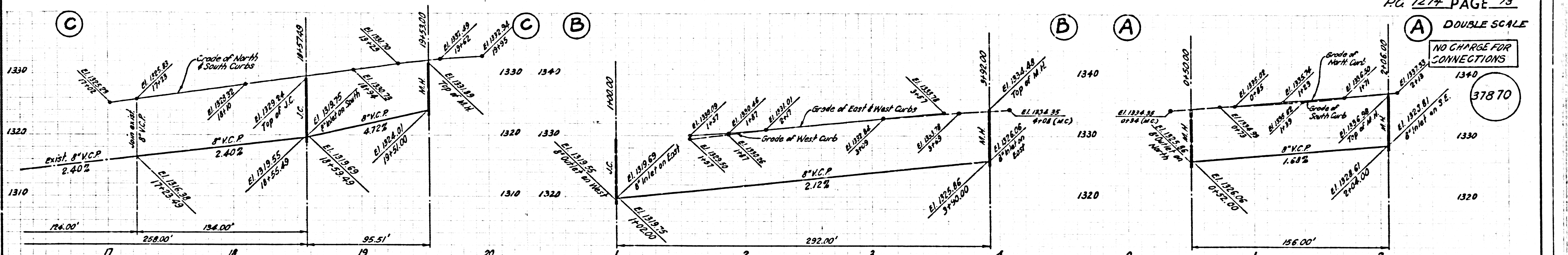
DOUBLE SCALE

37869



4757 39 STRES 4N T3ART





DOUBLE SCALE  
NO CHARGE FOR CONNECTIONS  
37870

