

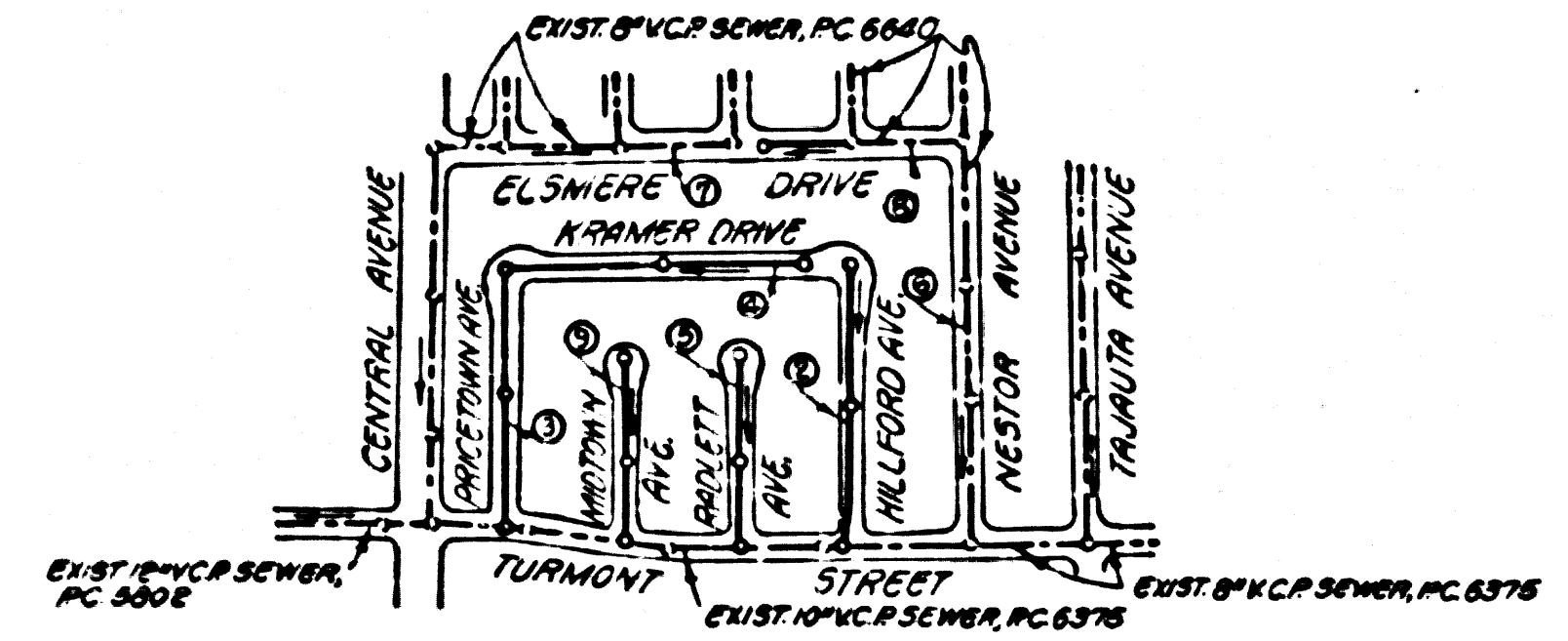
B.M. 5Y-3985 ELEV. 188.886
 Spk. E.L. in pavement 1/8" W. of
 Wilmington Ave. 12' 7 1/2" S. of
 Victoria St. 17 1/2" S. of TP=549556H
 GARDENA QUAD. 19 60

DOUBLE SCALE
 LENNOX BLDG. DIST. NO. 7

PROFILE ALIGNMENT AND GRADE OF
 SANITARY SEWERS PAGE 1
 TO BE CONSTRUCTED IN
 TRACT NO. 29681

Revised Street & Sewer Grades
 on Radlett Ave. Page 5 and
 Midtown Ave. Page 9

By: J.R. Merrill
 RE. 13095
 Approved: Raymond D. Valdez



INDEX MAP
 TRACT NO. 29681
 SCALE: 1"=500'
 P.C. 7276

PRIVATE ENGINEER'S
 NOTICE TO CONTRACTOR

THE EXISTENCE AND LOCATION OF ANY UNDERGROUND UTILITY PIPES
 SHOWN ON THESE PLANS AND OBTAINED BY A SEARCH
 TO THE AVERAGE DEPTH TO THE BEST OF OUR KNOWLEDGE
 THERE ARE NO UNDERGROUND UTILITY PIPES SHOWN ON THIS MAP
 THE CONTRACTOR IS REQUIRED TO TAKE PRECAUTIONARY MEASURES
 TO PROTECT THE UTILITY LINES SHOWN AND ANY OTHER LINES
 NOT SHOWN OR NOT SHOWN ON THIS DRAWING.

- NOTES:
1. P.C. SIDE STAKES ON THE PROPERTY LINE OR PROPERTY LINES PRODUCED AT RIGHT ANGLES TO THE SEWER LINE AT THE CENTER LINE OF EACH MANHOLE.
 2. NO REPRESENTATIVE OF THE COUNTY ENGINEER WILL SURVEY OR LAY OUT ANY PORTION OF THE WORK.
 3. THE PRIVATE ENGINEER SHALL FURNISH THE COUNTY ENGINEER WITH GRADE SHEETS AND STATIONING FOR ALL HOUSE LATERALS AND Y BRANCHES AND SHALL PROVIDE STAKES FOR THEM AT THEIR PROPER LOCATIONS WITH STATIONING PLAINLY MARKED. ALL HOUSE LATERALS SHALL BE CONSTRUCTED BY A STRAIGHT ALIGNMENT AT RIGHT ANGLES FROM THE MAIN LINE SEWER EXCEPT AS SHOWN ON THE PLANS. HOUSE LATERALS FROM CHIMNEYS SHALL NOT HAVE AN ANGLE OF LESS THAN 45° WITH THE MAIN LINE SEWER. ANY CHANGE IN ALIGNMENT SHALL BE INDICATED BY WRITING BY THE PRIVATE ENGINEER.
 4. THE PRIVATE ENGINEER SHALL FURNISH THE HOUSE LATERAL DEPTH AT THE PROPERTY LINE BELOW THE TOP OF CURB ELEVATION FOR EACH HOUSE LATERAL ON THE GRADE SHEET.
 5. NO REVISIONS SHALL BE MADE IN THESE PLANS WITHOUT THE APPROVAL OF THE COUNTY ENGINEER.
 6. THE CONTRACTOR SHALL NOTIFY THE CONSTRUCTION DIVISION BY TELEPHONE, MADISON 9-4747, EXT. 8832, AT LEAST TWENTY-FOUR HOURS BEFORE STARTING ANY WORK UNDER THIS CONTRACT.
 7. MANHOLES SHALL BE BRICK SEWER STRUCTURES PER S-8 PRECAST CONCRETE MANHOLES PER S-8 OR S-8 MAY BE USED AS IN ALL PLANS BY LOCATIONS APPROVED BY THE COUNTY ENGINEER.
 8. USE STANDARD MANHOLE FRAMES AND COVERS, S-8, EXCEPT AS NOTED.
 9. MANHOLE TOPS IN UNIMPROVED RIGHTS-OF-WAY TO BE SIX INCHES ABOVE FINISHED GRADE.
 10. USE EXTRA STRENGTH PIPE. ALL PIPE IS STANDARD DEPTH EXCEPT AS NOTED.
 11. USE CEMENT MORTAR OR MECHANICAL COMPRESSION JOINTS FOR ALL V.C.P. JOINTS PER SPECS. SECS. 34, 4, 48 & 49.
 12. WHEN RYE GROUND WATER IS ENCOUNTERED DURING THE CONSTRUCTION OF THE SEWERS, THE V.C.P. JOINTS SHALL BE OF JOINT COMPOUND PER SPECS. SECS. 33 & 48, OR MECHANICAL COMPRESSION JOINTS PER SPECS. SEC. 34.
 13. IF A POWER POLE IS WITHIN THREE FEET OF THE SEWER, THE SEWER SHALL BE ENCASED PER S-23 TWO FEET ON EITHER SIDE FROM THE POINT OF INTERFERENCE.
 14. IF DURING THE COURSE OF CONSTRUCTION IT IS DETERMINED THAT THERE IS LESS THAN FOUR FEET OF COVER OVER THE TOP OF A MAIN LINE OR HOUSE LATERAL V.C.P. SEWER WHICH IS NOT INDICATED ON THE PLANS, THE PIPE SHALL BE ENCASED PER S-23 UNLESS OTHERWISE APPROVED BY THE COUNTY ENGINEER.
 15. HOUSE LATERALS TO BE CONSTRUCTED WITH INVERTS AT PROPERTY LINE... FEET BELOW CURB GRADE EXCEPT AS NOTED.
 16. REINFORCED ALL TRENCHES WITHIN PAVED AREAS TO MEET L.A. COUNTY ROAD DEPT. OR CALIFORNIA STATE HIGHWAY REQUIREMENTS BY ACCORDANCE WITH PERMITS.
 17. FOR ALLOWABLE LEAKAGE TEST USE FORMULA NO. 2, SPECS. SEC. 54.
 18. ALL STATE AND LOCAL TRENCH SAFETY ORDERS WILL BE RIGIDLY ENFORCED.

NO CONNECTIONS FOR THE DISPOSAL OF INDUSTRIAL WASTES SHALL BE MADE TO SEWERS SHOWN ON THESE DRAWINGS WITHOUT WRITTEN PERMISSION FROM THE CHIEF ENGINEER AND GENERAL MANAGER OF THE COUNTY SANITATION DISTRICTS.

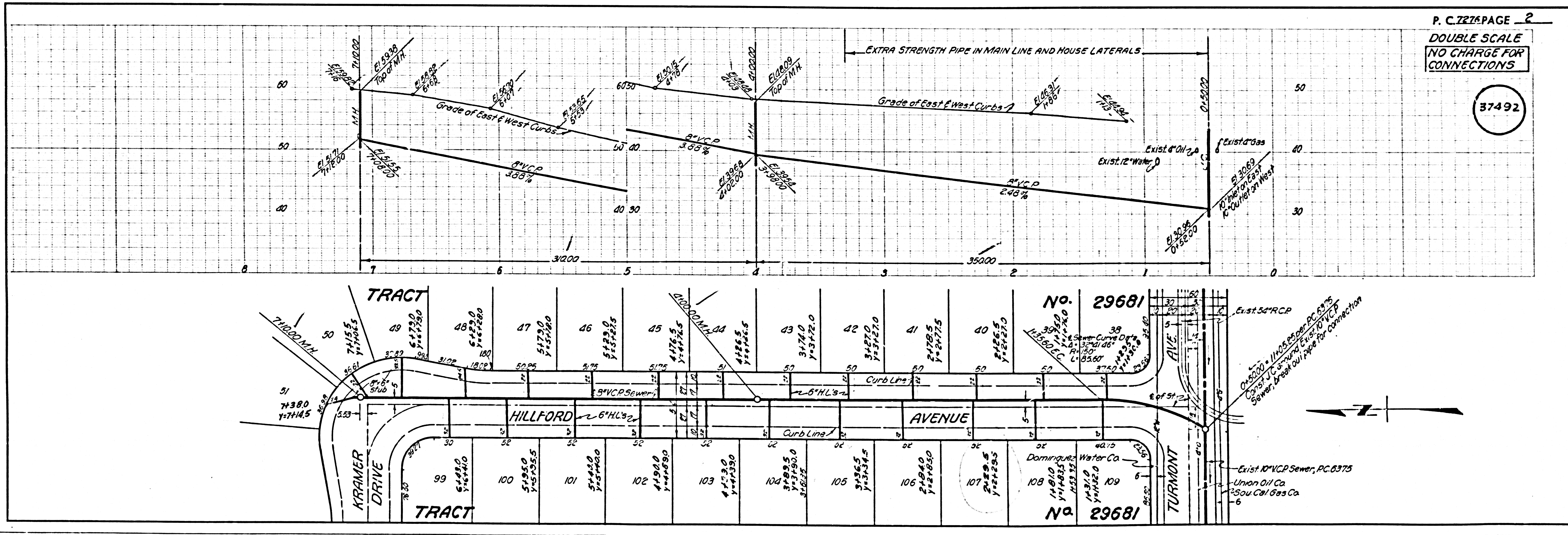
COLLECT CHARGES AS INDICATED

PRIVATE CONTRACT NO. 7276
 W.S. 26
 6 SHEETS, 9 PAGES
 SCALE: VERT. 1"=8'
 HORIZ. 1"=40'
 JANUARY, 1965
 PREPARED IN THE OFFICES OF
 ENGINEERING SERVICE CORP.
 BY: J.R. Merrill
 REG. C. E. NO. 13095
 FOR LEGEND SEE PLAN NO. S-1

NOTE:
 GRADES TO WHICH THIS IMPROVEMENT IS TO BE CONSTRUCTED ARE SHOWN ON PLANS AND PROFILES. GRADE POINTS FOR TOP OF CURB, CENTER LINE OF STREETS, OR CENTER LINE OF ALLEYS ARE SHOWN BY CIRCLES ON PROFILES. AT ALL POINTS BETWEEN DESIGNATED POINTS THE GRADE SHALL BE ESTABLISHED SO AS TO CONFORM TO A STRAIGHT LINE DRAWN BETWEEN SAID DESIGNATED POINTS. ELEVATIONS ARE IN FEET ABOVE U.S.C. & G.S. SEA LEVEL DATUM OF 1929. THE DRAWING AND THE DATA HEREON ARE HEREBY MADE A PART OF THE SPECIFICATIONS. WORK SHALL BE CONSTRUCTED ACCORDING TO STANDARD SPECIFICATIONS DATED MAY 25, 1958, ON FILE IN THE OFFICE OF THE COUNTY ENGINEER AND SHALL BE PROSECUTED ONLY IN THE PRESENCE OF THE COUNTY ENGINEER. BEFORE WORK CAN BE STARTED, THE CONTRACTOR MUST OBTAIN A PERMIT TO EXCAVATE IN COUNTY STREETS FROM THE L.A. COUNTY ROAD DEPT., DISTRICT OFFICE NO. 3 AND PAY A FEE TO THE COUNTY ENGINEER, ROOM 332, COUNTY ENGINEER, 8 BROADWAY, NEW YORK 10003, DISTRICT OFFICE NO. 3 AND PAY A FEE TO THE COUNTY ENGINEER, ROOM 332, COUNTY ENGINEER, 8 BROADWAY, NEW YORK 10003, DISTRICT OFFICE NO. 3 AND PAY A FEE TO THE COUNTY ENGINEER, ROOM 332, COUNTY ENGINEER, 8 BROADWAY, NEW YORK 10003. APPROVAL OF THIS PLAN BY THE COUNTY OF LOS ANGELES DOES NOT CONSTITUTE A REPRESENTATION AS TO THE ACCURACY OF THE LOCATION OF OR THE EXISTENCE OR NON-EXISTENCE OF ANY UNDERGROUND UTILITY PIPE, OR STRUCTURE WITHIN THE LIMITS OF THIS PROJECT. THIS NOTE APPLIES TO ALL PAGES. IF WORK IS TO BE DONE IN A STATE HIGHWAY, A PERMIT MUST BE OBTAINED FROM THE STATE OF CALIFORNIA, DIVISION OF HIGHWAYS, 120 SOUTH SPRING STREET, LOS ANGELES, CALIFORNIA.

COUNTY OF LOS ANGELES, CALIFORNIA
 JOHN A. LAMBE, COUNTY ENGINEER
 J. D. PARKHURST, CHIEF ENGINEER
 CO. SAN. DIST. NO. 7
 APPROVED BY: [Signature]
 ASSISTANT SANITATION ENGINEER
 APPROVED BY: [Signature]
 OFFICE ENGINEER
 SUBMITTED BY: [Signature]
 REGIONAL ENGINEER
 CHECKED BY: [Signature]
 REG. C. E. NO. 15653

J.N. 036511

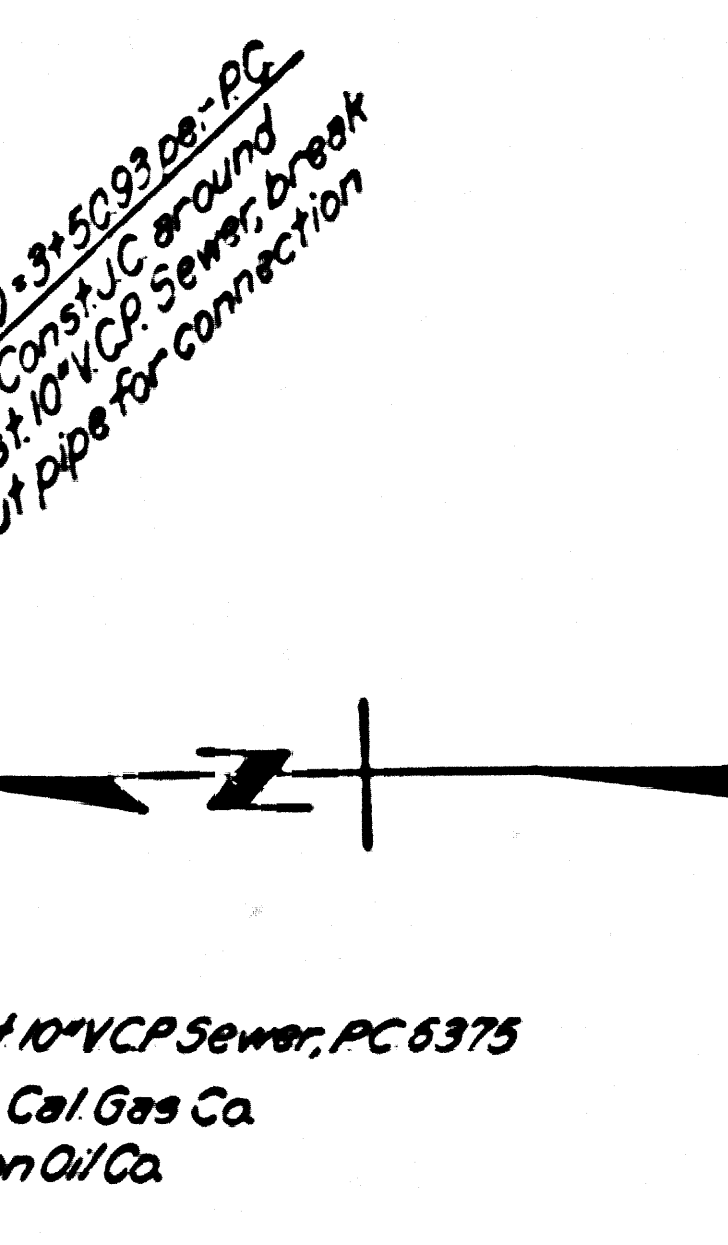
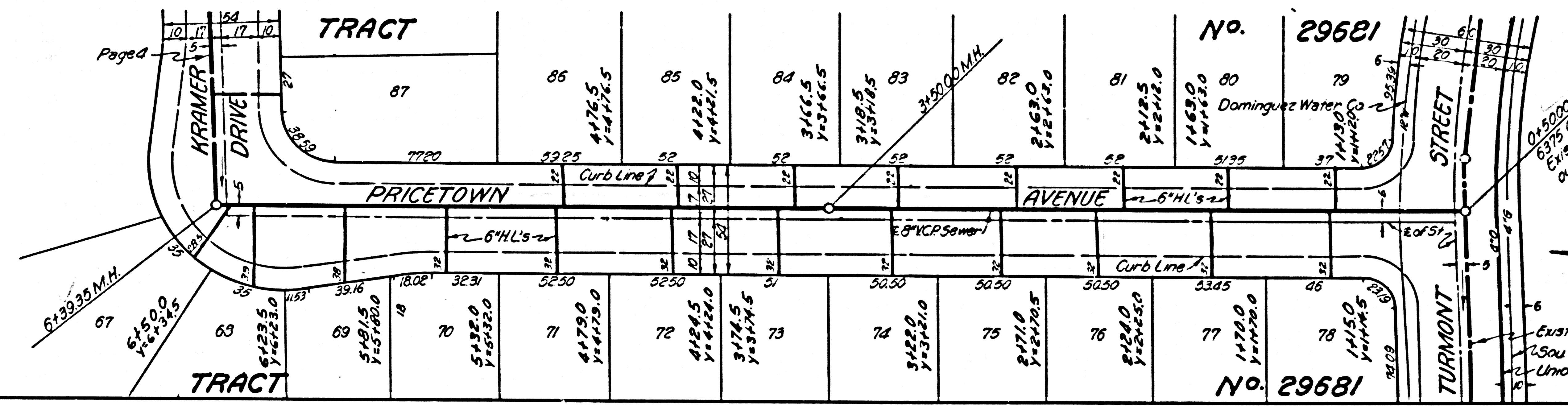
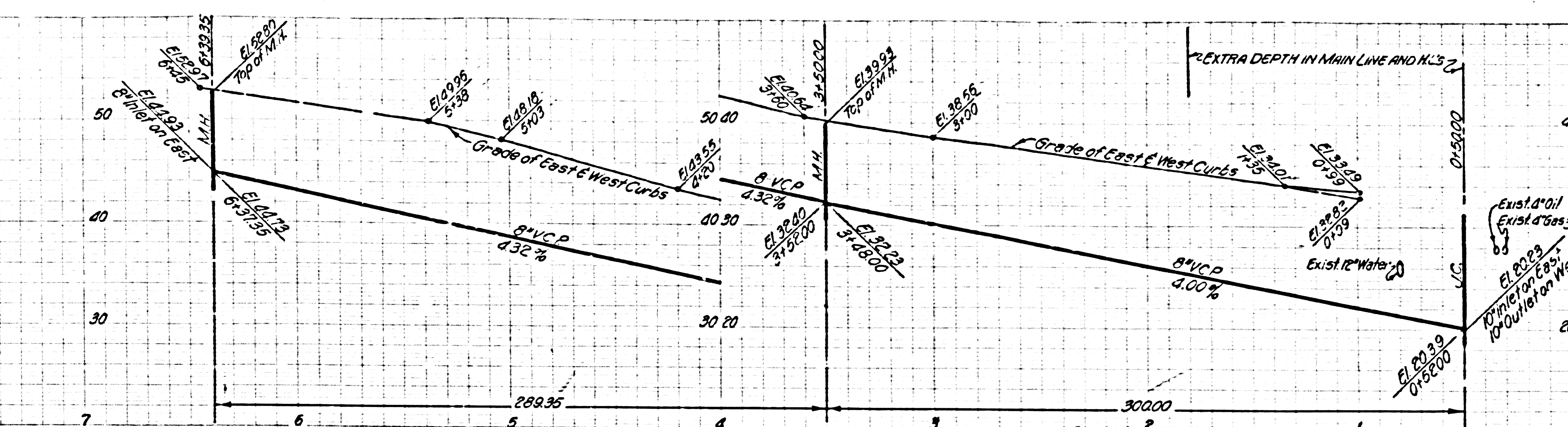


P. C. 7276 PAGE 2
 DOUBLE SCALE
 NO CHARGE FOR CONNECTIONS

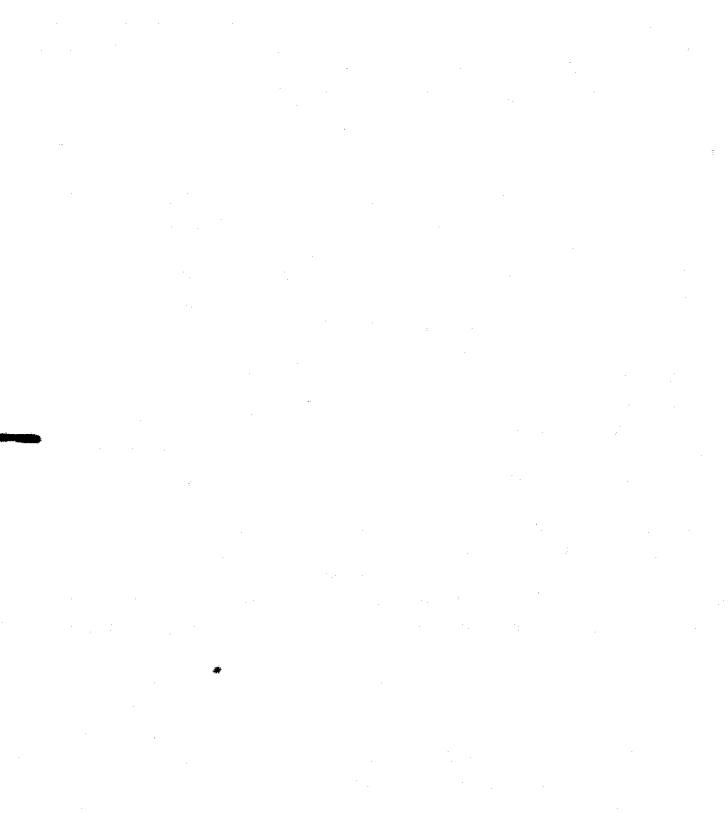
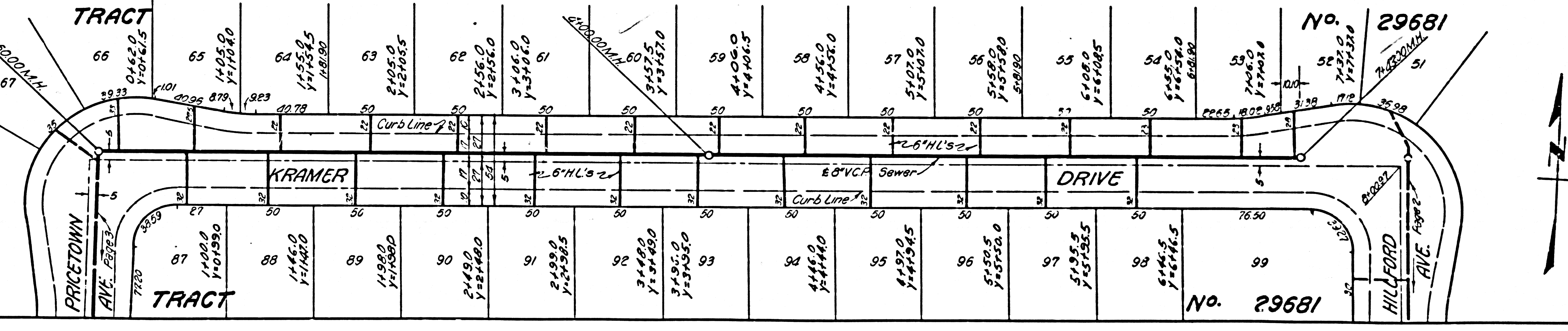
37492

37493

18205 SAN TRACT

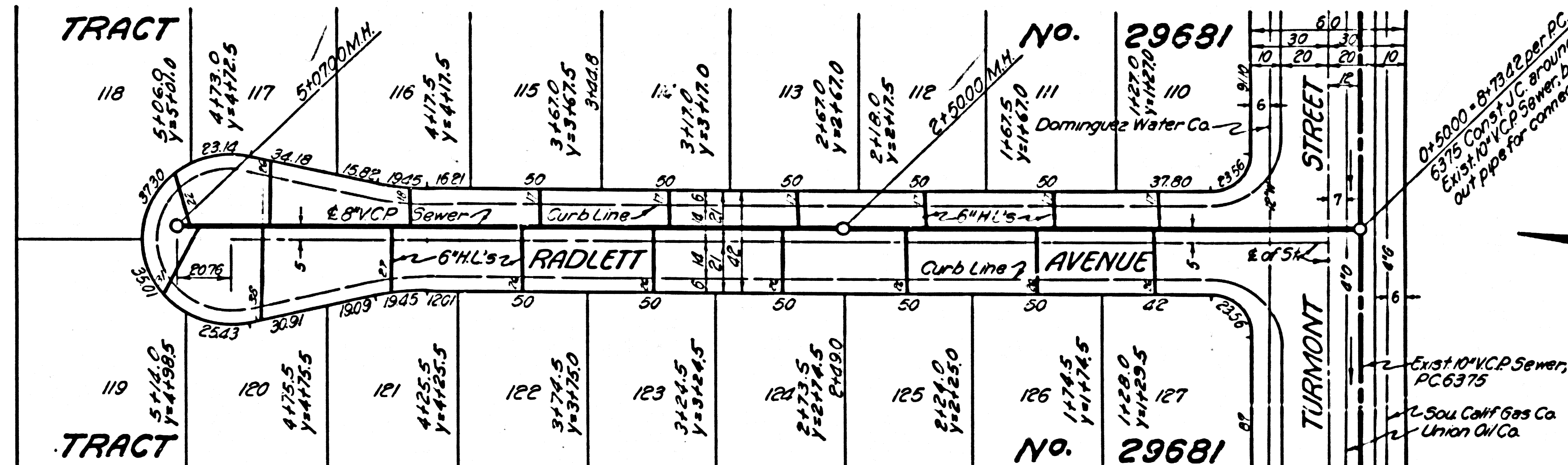
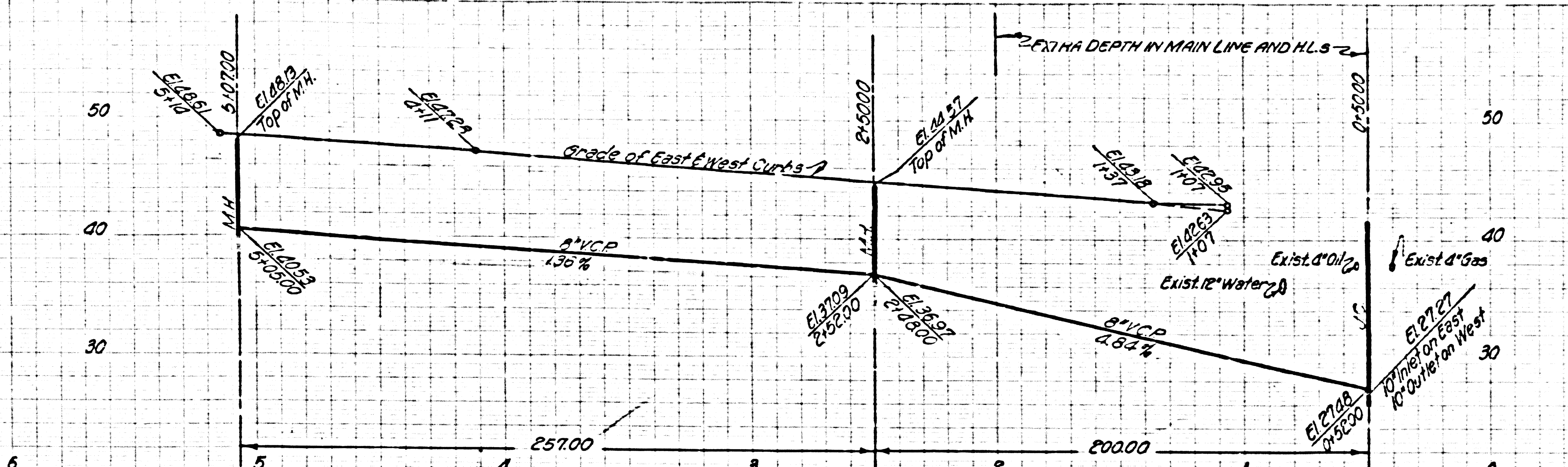


37494



DOUBLE SCALE
NO CHARGE FOR
CONNECTIONS

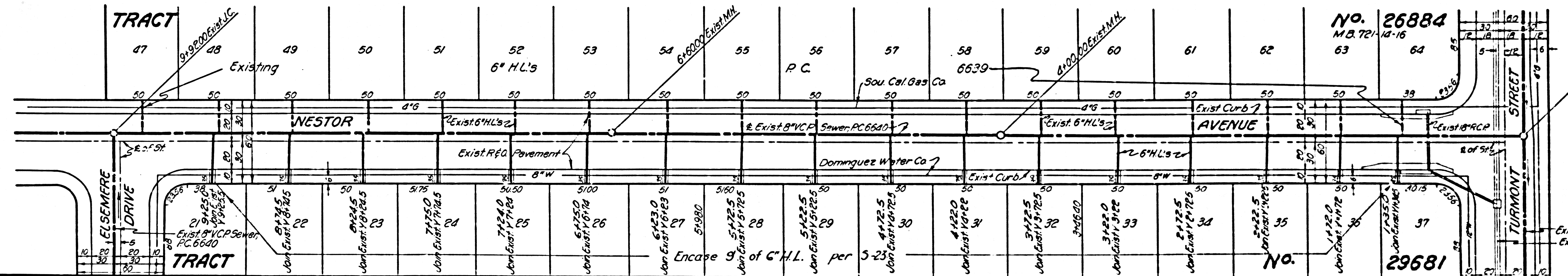
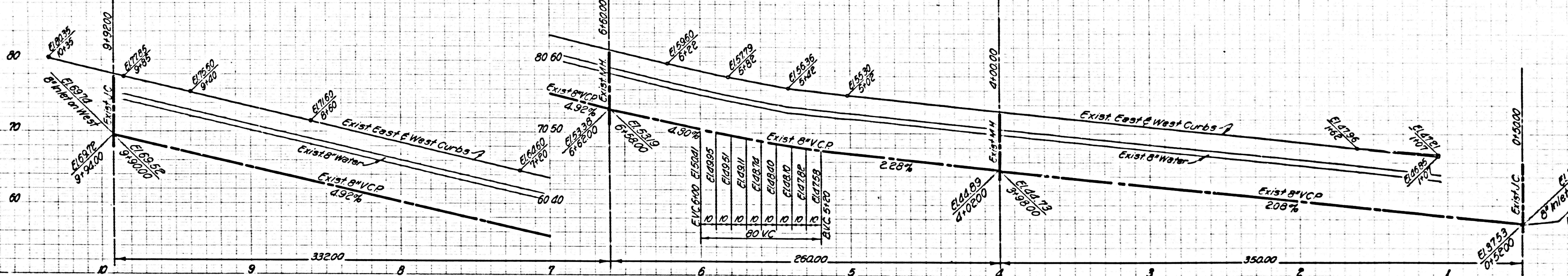
37495



No. 29681
 Dominguez Water Co.
 No. 29681
 Union Oil Co.

DOUBLE SCALE
NO CHARGE FOR
CONNECTIONS

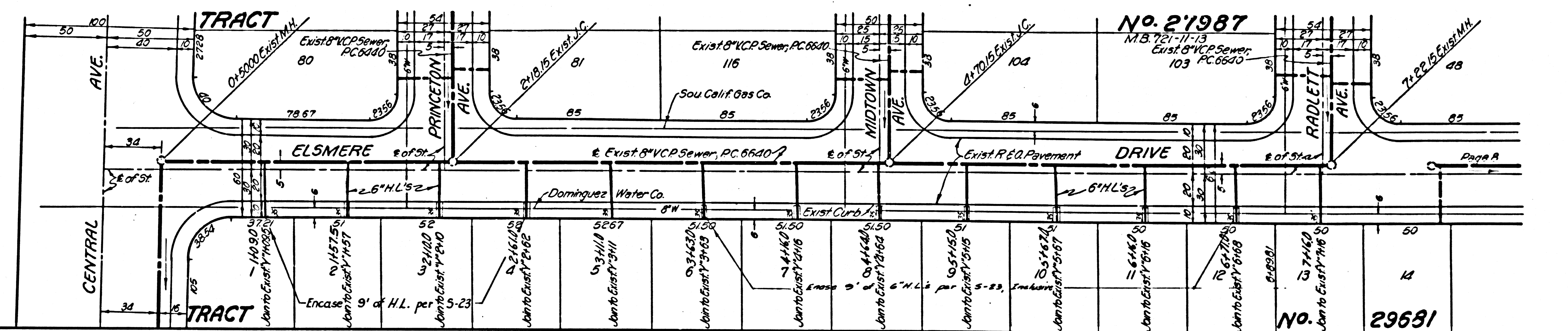
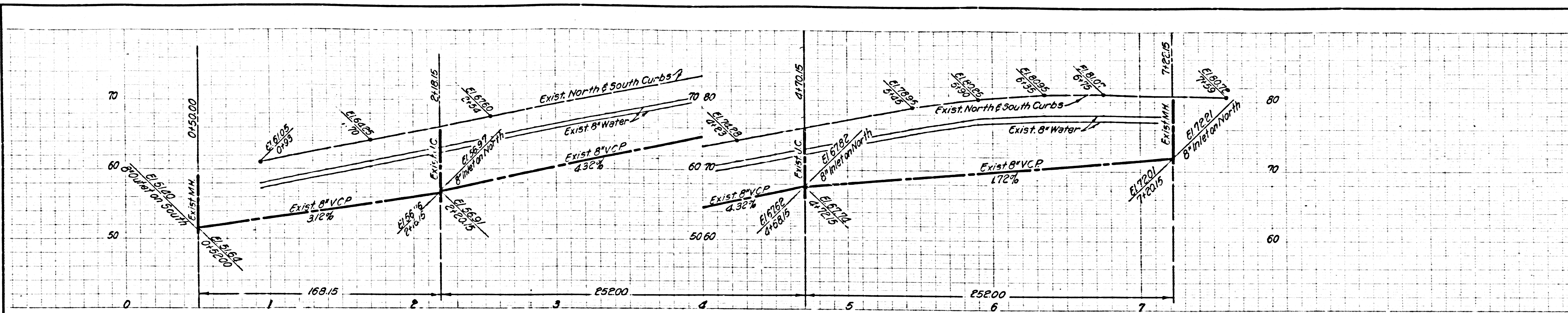
37496



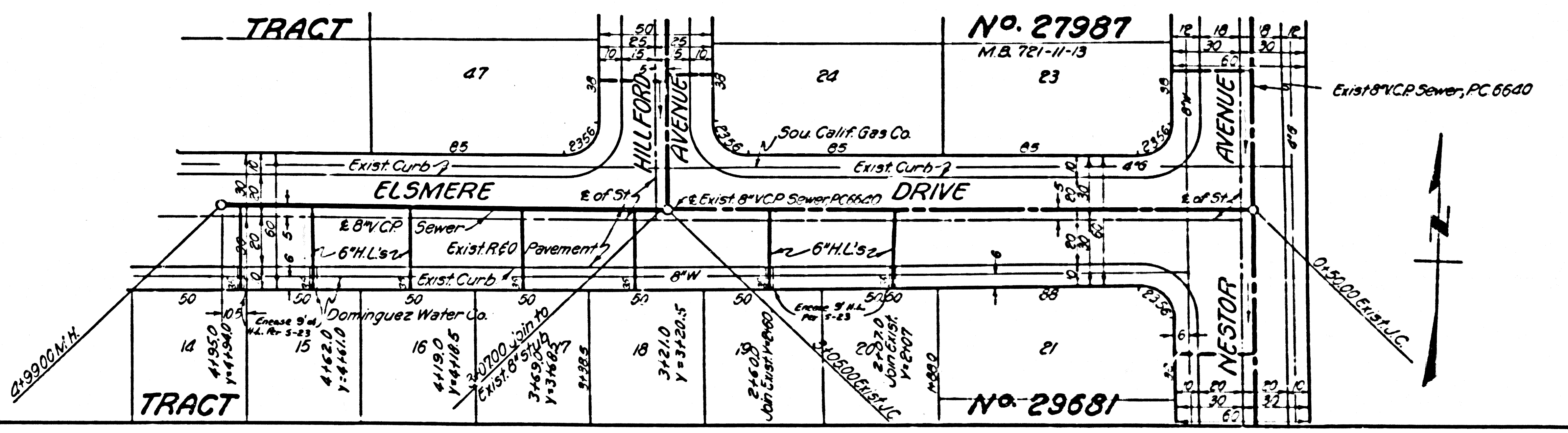
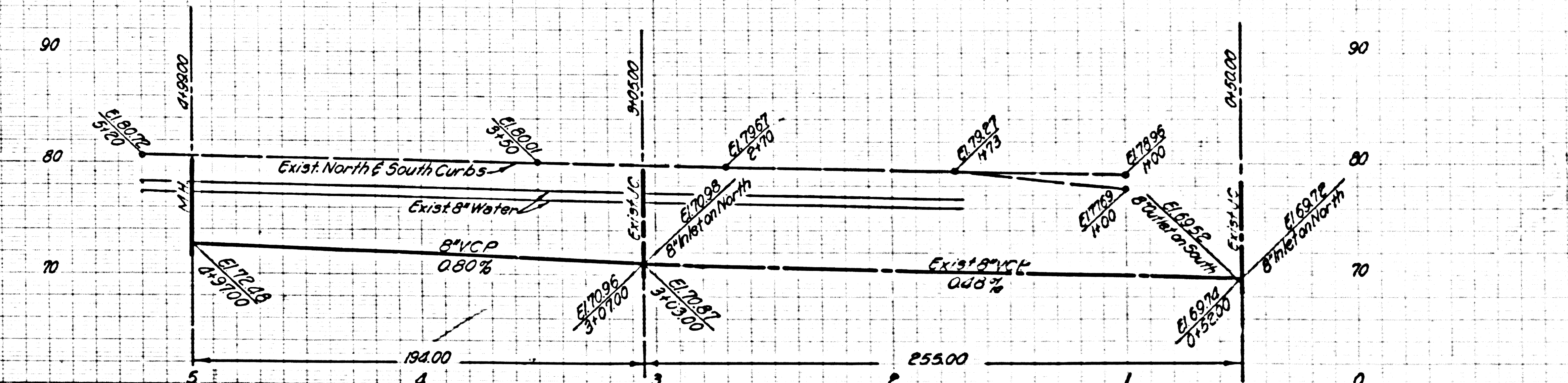
No. 26884
 M.B. 721-14-16
 No. 29681

INHC1 W08 SAPAI

37497



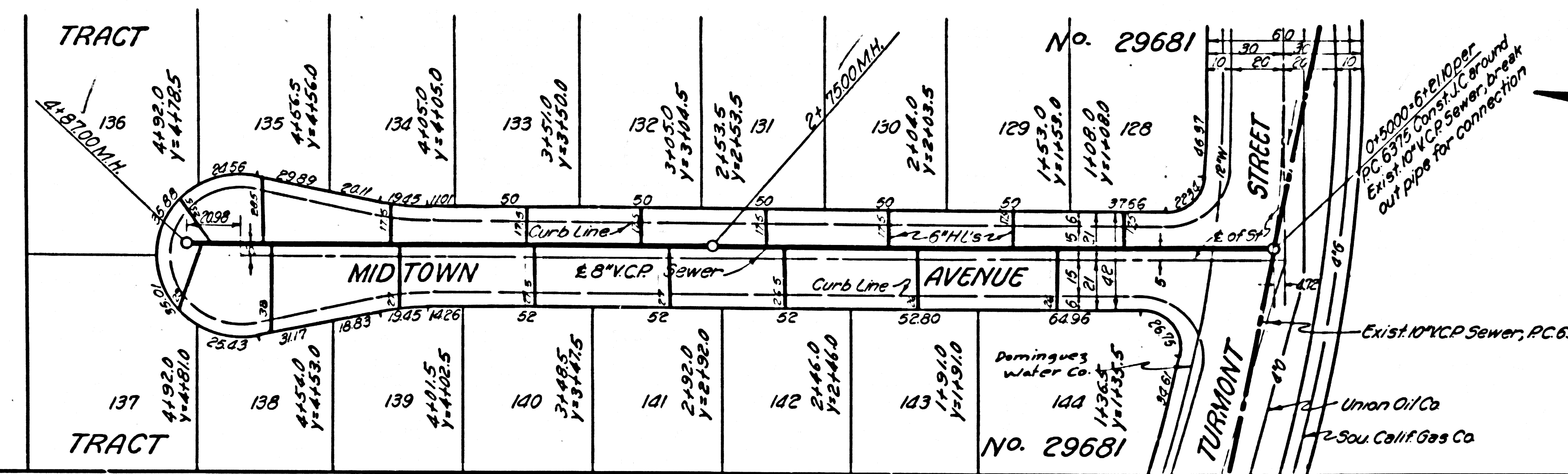
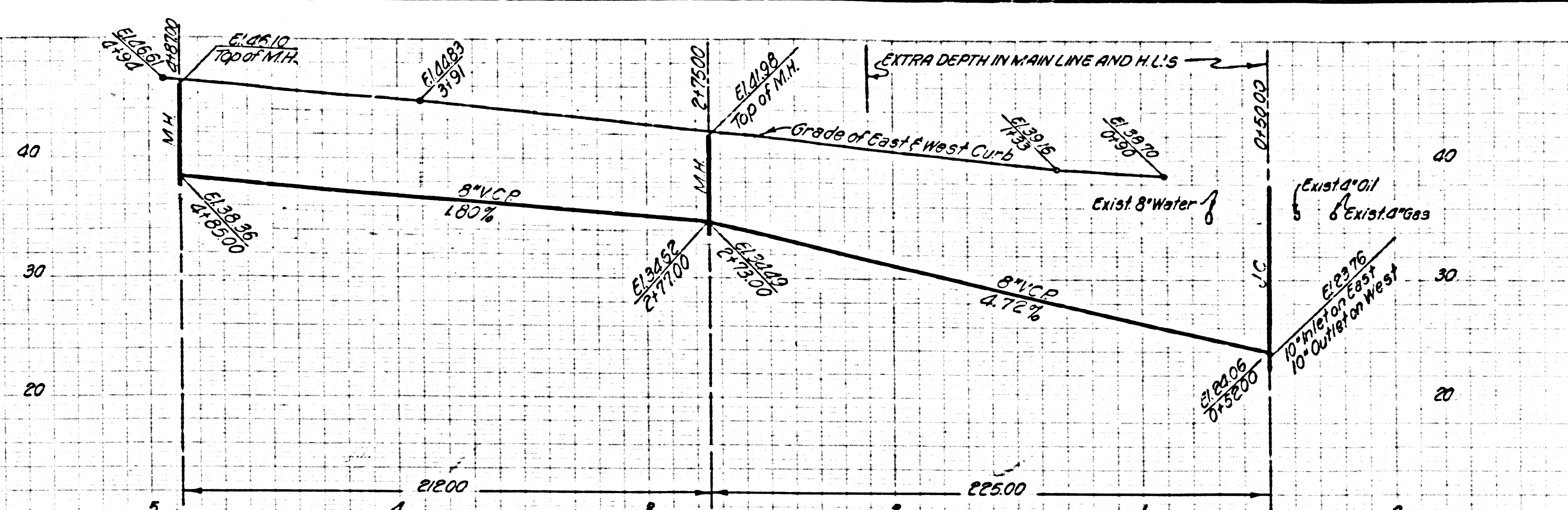
37498



16885 ON TYPART

DOUBLE SCALE
NO CHARGE FOR
CONNECTIONS

374-99



136 41910 Y=41785
135 41815 Y=41580
134 41720 Y=41375
133 41625 Y=41170
132 41530 Y=40965
131 41435 Y=40760
130 41340 Y=40555
129 41245 Y=40350
128 41150 Y=40145
127 41055 Y=39940
126 40960 Y=39735
125 40865 Y=39530
124 40770 Y=39325
123 40675 Y=39120
122 40580 Y=38915
121 40485 Y=38710
120 40390 Y=38505
119 40295 Y=38300
118 40200 Y=38095
117 40105 Y=37890
116 40010 Y=37685
115 39915 Y=37480
114 39820 Y=37275
113 39725 Y=37070
112 39630 Y=36865
111 39535 Y=36660
110 39440 Y=36455
109 39345 Y=36250
108 39250 Y=36045
107 39155 Y=35840
106 39060 Y=35635
105 38965 Y=35430
104 38870 Y=35225
103 38775 Y=35020
102 38680 Y=34815
101 38585 Y=34610
100 38490 Y=34405
99 38395 Y=34200
98 38300 Y=33995
97 38205 Y=33790
96 38110 Y=33585
95 38015 Y=33380
94 37920 Y=33175
93 37825 Y=32970
92 37730 Y=32765
91 37635 Y=32560
90 37540 Y=32355
89 37445 Y=32150
88 37350 Y=31945
87 37255 Y=31740
86 37160 Y=31535
85 37065 Y=31330
84 36970 Y=31125
83 36875 Y=30920
82 36780 Y=30715
81 36685 Y=30510
80 36590 Y=30305
79 36495 Y=30100
78 36400 Y=29895
77 36305 Y=29690
76 36210 Y=29485
75 36115 Y=29280
74 36020 Y=29075
73 35925 Y=28870
72 35830 Y=28665
71 35735 Y=28460
70 35640 Y=28255
69 35545 Y=28050
68 35450 Y=27845
67 35355 Y=27640
66 35260 Y=27435
65 35165 Y=27230
64 35070 Y=27025
63 34975 Y=26820
62 34880 Y=26615
61 34785 Y=26410
60 34690 Y=26205
59 34595 Y=25990
58 34500 Y=25785
57 34405 Y=25580
56 34310 Y=25375
55 34215 Y=25170
54 34120 Y=24965
53 34025 Y=24760
52 33930 Y=24555
51 33835 Y=24350
50 33740 Y=24145
49 33645 Y=23940
48 33550 Y=23735
47 33455 Y=23530
46 33360 Y=23325
45 33265 Y=23120
44 33170 Y=22915
43 33075 Y=22710
42 32980 Y=22505
41 32885 Y=22300
40 32790 Y=22095
39 32695 Y=21890
38 32600 Y=21685
37 32505 Y=21480
36 32410 Y=21275
35 32315 Y=21070
34 32220 Y=20865
33 32125 Y=20660
32 32030 Y=20455
31 31935 Y=20250
30 31840 Y=20045
29 31745 Y=19840
28 31650 Y=19635
27 31555 Y=19430
26 31460 Y=19225
25 31365 Y=19020
24 31270 Y=18815
23 31175 Y=18610
22 31080 Y=18405
21 30985 Y=18200
20 30890 Y=17995
19 30795 Y=17790
18 30700 Y=17585
17 30605 Y=17380
16 30510 Y=17175
15 30415 Y=16970
14 30320 Y=16765
13 30225 Y=16560
12 30130 Y=16355
11 30035 Y=16150
10 29940 Y=15945
9 29845 Y=15740
8 29750 Y=15535
7 29655 Y=15330
6 29560 Y=15125
5 29465 Y=14920
4 29370 Y=14715
3 29275 Y=14510
2 29180 Y=14305
1 29085 Y=14100
0 28990 Y=13895

