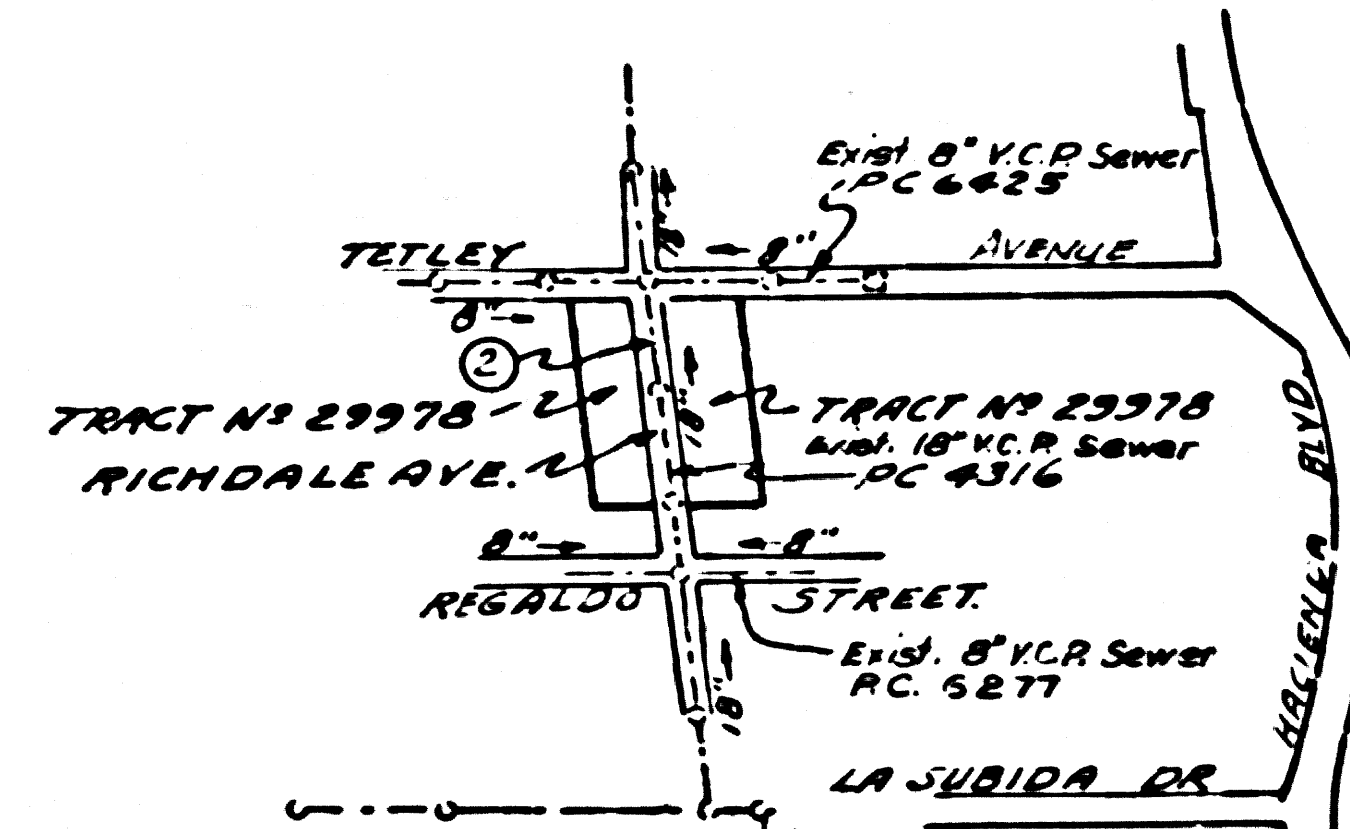


B.M. 56-1620. ELEV. 418.496  
 L.G. 7' IN S. CURB NEWTON ST.  
 ±20'S ± E ± 25' E. OF ±  
 PROD. OF KWIS AVE.  
 WHITTIER - QUAD. 19-55



INDEX MAP  
 TRACT No 29978  
 P.C. 7277  
 J.N. 0365.12  
 SCALE 1"=600'

**NOTICE TO CONTRACTOR**

The existence and approximate location of underground utilities or structures shown on these plans were determined by a search of the available public records. To the best of our knowledge there are no existing underground utilities or structures except as shown on this map.

The contractor is required to take due precautionary measures to protect the utilities or structures shown and any other utilities or structures of the site. It shall be the contractor's responsibility to notify the owners of the utilities or structures concerned before starting work.

**LA PUENTE BLDG. DIST. NO. 2**

- NOTES:
1. PROVIDE STAKES ON THE PROPERTY LINE OR PROPERTY LINES PRODUCED AT RIGHT ANGLES TO THE SEWER LINE AT THE CENTER LINE OF EACH MANHOLE.
  2. NO REPRESENTATIVE OF THE COUNTY ENGINEER WILL SURVEY OR LAY OUT ANY PORTION OF THE WORK.
  3. THE PRIVATE ENGINEER SHALL FURNISH THE COUNTY ENGINEER WITH GRADE SHEETS AND STATIONING FOR ALL HOUSE LATERALS AND Y JOINTS AND SHALL PROVIDE STAKES FOR THEM AT THREE PROPER LOCATIONS WITH STATIONING PLAINLY MARKED. ALL HOUSE LATERALS SHALL BE CONSTRUCTED IN A STRAIGHT ALIGNMENT AT RIGHT ANGLES FROM THE MAIN LINE SEWER UNLESS OTHERWISE SPECIFIED. HOUSE LATERALS SHALL BE INSTALLED IN WEST-TO-EAST OR EAST-TO-WEST DIRECTION. ANY CHANGE IN ALIGNMENT SHALL BE INDICATED BY THE PRIVATE ENGINEER.
  4. THE PRIVATE ENGINEER SHALL FURNISH THE HOUSE LATERAL WITH A 1/4" DIA. COPPER PIPE 1/2" BELOW THE TOP OF CURB SURFACE FOR EACH HOUSE LATERAL ON THE GRADE SHEET.
  5. NO REVISIONS SHALL BE MADE IN THESE PLANS WITHOUT THE APPROVAL OF THE COUNTY ENGINEER.
  6. THE CONTRACTOR SHALL NOTIFY THE CONSTRUCTION DIVISION BY TELEPHONE, MADISON 9-7747, EXT. 8848, AT LEAST TWENTY-FOUR HOURS BEFORE STARTING ANY WORK UNDER THIS CONTRACT.
  7. MANHOLES SHALL BE BRICK-BUILT STRUCTURES PER S-204. PRECAST-CONCRETE MANHOLES PER S-214 OR S-215 MAY BE USED AS AN ALTERNATE TO BRICK-BUILT MANHOLES APPROVED BY THE COUNTY ENGINEER.
  8. USE STANDARD MANHOLE FRAMES AND COVERS, 6'-0" DIA. SET AS NOTED.
  9. MANHOLES SHALL BE UNRAISED UNLESS OTHERWISE NOTED.
  10. USE EXTRA STRENGTH PIPE, ALL PIPE IS STANDARD DEPTH EXCEPT AS NOTED.
  11. USE MECHANICAL COMPRESSION JOINTS FOR ALL V.C.P. JOINTS PER SPEC'S, SECS. 493 & 494.
  12. MANHOLES SHALL BE BRICK-BUILT STRUCTURES PER S-204. PRECAST-CONCRETE MANHOLES PER S-214 OR S-215 MAY BE USED AS AN ALTERNATE TO BRICK-BUILT MANHOLES APPROVED BY THE COUNTY ENGINEER.
  13. IF A POWER POLE IS WITHIN THREE FEET OF THE SEWER, THE SEWER SHALL BE DEEPSHOWN PER S-213 - TWO FEET ON EACH SIDE FROM THE POINT OF INTERFERENCE.
  14. IF DURING THE COURSE OF CONSTRUCTION IT IS DETERMINED THAT THERE IS LESS THAN FOUR FEET OF COVER OVER THE TOP OF A MAIN LINE OR HOUSE LATERAL V.C.P. SEWER WHICH IS NOT INDICATED ON THE PLANS, THE PIPE SHALL BE DEEPSHOWN PER S-213 UNLESS OTHERWISE APPROVED BY THE COUNTY ENGINEER.
  15. HOUSE LATERALS TO BE CONSTRUCTED WITH INVERTS AT PROPERTY LINE. 6" DIA. COPPER PIPE SHALL BE USED EXCEPT AS NOTED.
  16. REPAIRS ALL TRENCHES WITHIN PAVED AREAS TO MEET L.A. COUNTY ROAD DEPT. OR CALIFORNIA STATE HIGHWAY REQUIREMENTS IN ACCORDANCE WITH PERMITS.
  17. FOR ALLOWABLE LEAKAGE TEST USE FORMULA NO. 1, SPEC'S, SEC. 54.
  18. ALL STATE AND LOCAL TRENCH SAFETY ORDERS WILL BE RIGIDLY ENFORCED.

PROFILE ALIGNMENT AND GRADE OF  
**SANITARY SEWERS** PAGE 1  
 CONSTRUCTED IN

**TRACT No 29978**  
**PRIVATE CONTRACT NO. 7277**

W.S. 38-44  
 SHEETS, 2 PAGES  
 SCALE: HORIZ. 1"=40' VERT. 1"=4'  
 FEBRUARY, 1965  
 PREPARED IN THE OFFICES OF  
**STRECKER ASSOCIATES, INC.**  
 11001 VALLEY BLVD., EL MONTE, CALIF.  
 BY *John A. Allen*  
 REG. C. E. NO. 3638

39585

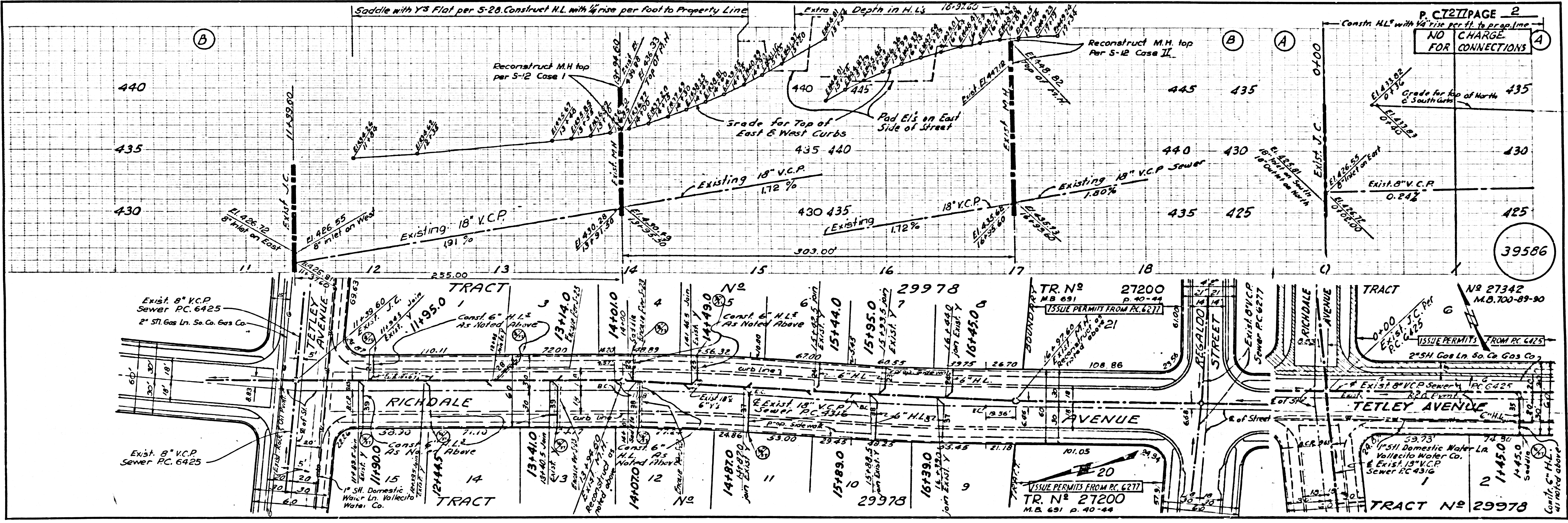
FOR LEGEND SEE PLAN NO. S-1

NOTES:  
 GRADES TO WHICH THIS IMPROVEMENT IS TO BE CONSTRUCTED ARE SHOWN ON PLANS AND PROFILES. GRADE POINTS FOR TOP OF CURBS, CENTER LINE OF STREETS, OR CENTER LINE OF ALLEYS ARE SHOWN BY CIRCLES ON PROFILES. AT ALL POINTS BETWEEN DESIGNATED POINTS THE GRADE SHALL BE ESTABLISHED SO AS TO CONFORM TO A STRAIGHT LINE BETWEEN SAID DESIGNATED POINTS.  
 ELEVATIONS ARE IN FEET ABOVE U.S.C. & G.S. SEA LEVEL UNLESS OTHERWISE NOTED.  
 THE DATA HEREON ARE HEREBY MADE A PART OF THE SPECIFICATIONS.  
 BEFORE WORK CAN BE STARTED, THE CONTRACTOR MUST OBTAIN A PERMIT TO EXCAVATE IN COUNTY STREETS FROM THE L.A. COUNTY ROAD DEPT., DISTRICT OFFICE NO. 1, AND PAY A FEE TO THE COUNTY ENGINEER, ROOM 302, COUNTY ENGINEER'S BUILDING, 100 WEST SECOND STREET, LOS ANGELES, CALIFORNIA. SPECIAL OFFICE, SUPERVISOR TO COVER THE COST OF CONSTRUCTION INSPECTION AND RECORD PLANS.  
 APPROVAL OF THIS PLAN BY THE COUNTY OF LOS ANGELES DOES NOT CONSTITUTE A REPRESENTATION AS TO THE ACCURACY OF THE LOCATION OR OF THE EXISTENCE OR NON-EXISTENCE OF ANY UNDERGROUND UTILITY PIPE, OR STRUCTURE WITHIN THE LIMITS OF THIS PROJECT. THIS NOTE APPLIES TO ALL PAGES.  
 IF WORK IS TO BE DONE IN A STATE HIGHWAY, A PERMIT MUST BE OBTAINED FROM THE STATE OF CALIFORNIA, DIVISION OF HIGHWAYS, 150 SOUTH SPRING STREET, LOS ANGELES, CALIFORNIA.

**COUNTY OF LOS ANGELES, CALIFORNIA**  
 JOHN A. LAMBIE, COUNTY ENGINEER  
 APPROVED BY *Richard M. Cox*  
 ASSISTANT SANITATION ENGINEER  
 SUBMITTED BY *John A. Allen*  
 SANITATION SPECIAL ENGINEER  
 CHECKED BY *John A. Allen*  
 REG. C. E. NO. 12443

J.N.0365.12

**COLLECT CHARGES AS INDICATED**  
*L. Roper 6-1-67*



39586